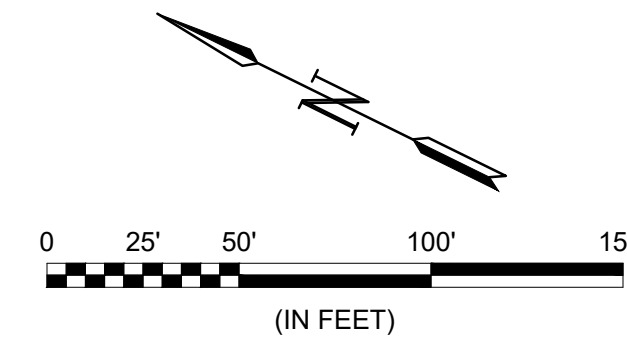


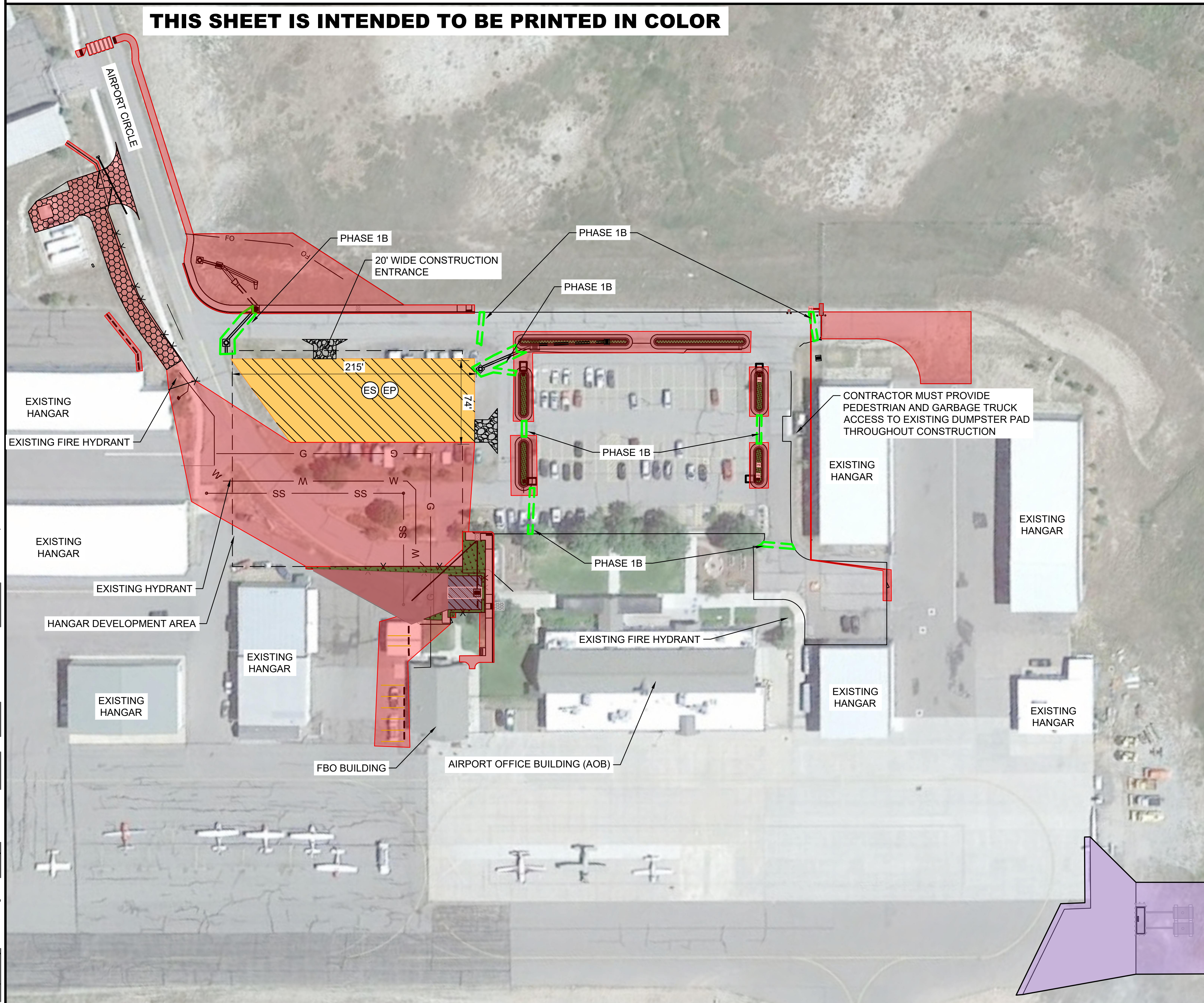
1. SEE CONSTRUCTION SAFETY AND PHASING NOTES FOR ADDITIONAL DETAILS.
2. ALL PAVEMENT CUTS TO HAPPEN IN PHASE 1B. STORM PIPE INSTALLATION CLOSURES ARE LIMITED TO 5 DAYS, ALL OTHER CLOSURES ARE LIMITED TO 2 DAYS. CLOSURES MAY NOT OCCUR SIMULTANEOUSLY WITHOUT ENGINEER AND AIRPORT APPROVAL.
3. BARRICADES SHOWN ARE FOR GRAPHIC PURPOSES ONLY. THE CONTRACTOR SHALL DETERMINE THE QUANTITY OF LIGHTED BARRICADES REQUIRED TO COMPLETE THE WORK AS SHOWN AND MUST BE IN ACCORDANCE WITH CURRENT CDOT SPECIFICATIONS.
4. CONTRACTOR SHALL HAVE AN APPROVED PAVEMENT BROOM OR VACUUM TRUCK AVAILABLE ON SITE AT ALL TIMES. HYDRANTS TO FILL VACUUM TRUCK WILL BE AVAILABLE ON AIRPORT PROPERTY. COORDINATION FOR HYDRANT CONNECTION SHALL BE THE RESPONSIBILITY OF THE CONTRACTOR AND CONSIDERED SUBSIDIARY TO MOBILIZATION.
5. THE CONTRACTOR WILL BE RESPONSIBLE FOR PROVIDING SUFFICIENT LIGHTING TO ADEQUATELY ILLUMINATE THE WORK AREA DURING NIGHTTIME OPERATIONS. A LIGHTING PLAN SHALL BE SUBMITTED FOR APPROVAL TO THE ENGINEER PRIOR TO NIGHT CONSTRUCTION OPERATIONS.



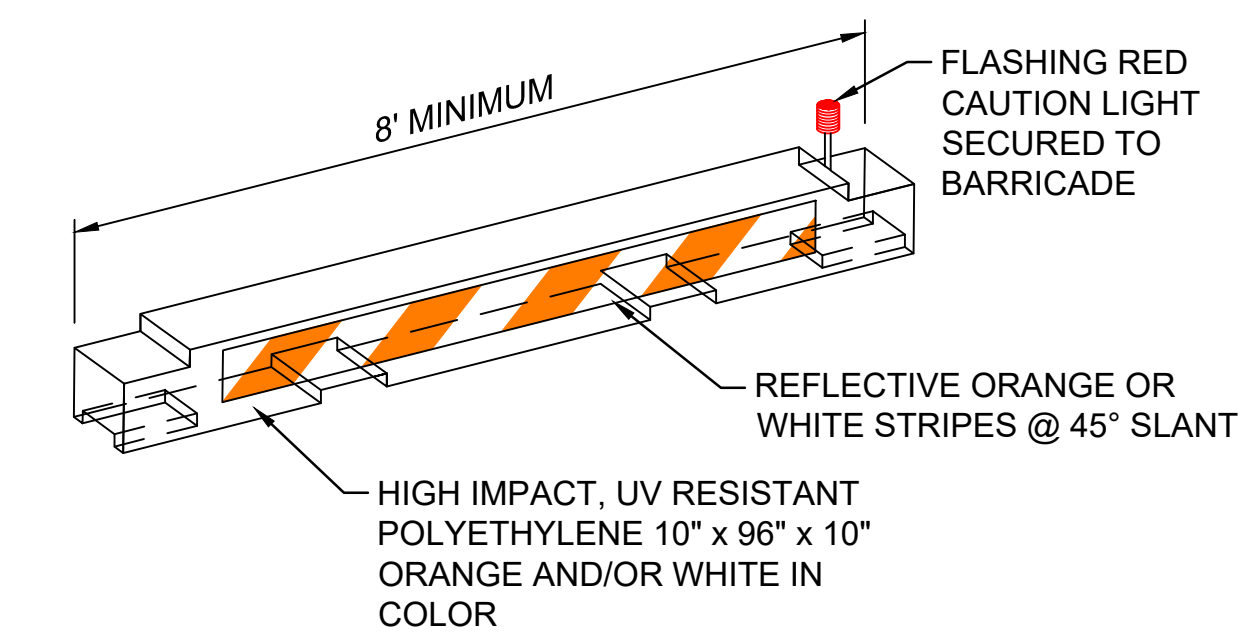
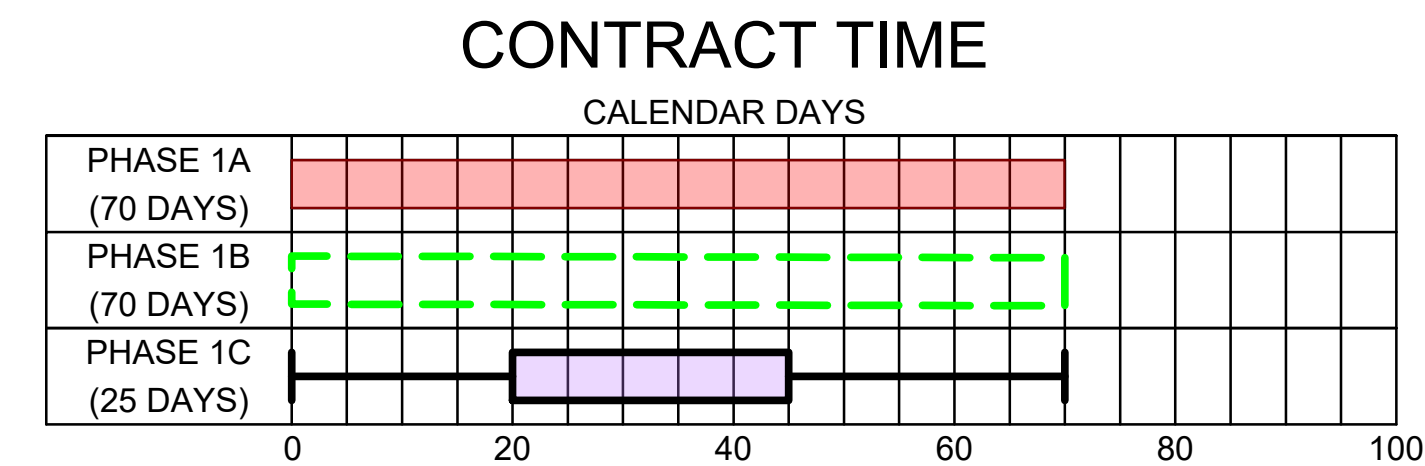
LEGEND	
	PHASE 1A WORK AREA
	PHASE 1B WORK AREA
	EQUIPMENT STORAGE AND EMPLOYEE PARKING LOT
	CONTRACTOR STAGING AREA (PACKAGE 1)

GARVER
 © 2024 GARVER, LLC
 THIS DOCUMENT, ALONG WITH THE IDEAS AND DESIGNS CONVEYED HEREIN, SHALL BE CONSIDERED INSTRUMENTS OF PROFESSIONAL SERVICE AND ARE PROPERTY OF GARVER, LLC. ANY USE, REPRODUCTION, OR DISTRIBUTION OF THIS DOCUMENT, ALONG WITH THE IDEAS AND DESIGN CONTAINED HEREIN, IS PROHIBITED UNLESS AUTHORIZED IN WRITING BY GARVER, LLC OR EXPLICITLY ALLOWED IN THE GOVERNING PROFESSIONAL SERVICES AGREEMENT FOR THIS WORK.

THIS SHEET IS INTENDED TO BE PRINTED IN COLOR



SEQUENCE OF CONSTRUCTION	
	CONSTRUCT SOUTH AIRFIELD ACCESS, FUEL TRUCK ACCESS ROAD BASE COURSE, EXTENDED DETENTION BASIN, AIRPORT CIRCLE SIDEWALKS, NEW FUEL TRUCK PARKING CANOPY, SIDEWALK NEAR THE FBO, AND LANDSCAPING. RECONFIGURE CONCRETE ISLANDS AND CONSTRUCT PARKING MEDIAN. PERFORM DEMOLITION WORK, EARTHWORK, UTILITY RELOCATIONS, FENCE AND GATE RELOCATION, DRAINAGE INSTALLATION, CONCRETE WORK, PAVING, AND PAVEMENT MARKINGS.
	CONSTRUCT JUNCTION BOX AND PIPE CONNECTING TO THE DETENTION POND AND IRRIGATION SLEEVES.
	CONSTRUCT SOUTH APRON EXPANSION.



- NOTES:**
1. BARRICADES SHALL BE FURNISHED, INSTALLED, MAINTAINED, AND REMOVED BY THE CONTRACTOR.
 2. BARRICADES SHALL MEET THE REQUIREMENTS OF THE CURRENT FAA ADVISORY CIRCULAR 150/5370-2 AND BE APPROVED BY THE ENGINEER.
 3. BARRICADES SHALL BE LOCATED AS DEFINED IN THE CONSTRUCTION SAFETY AND PHASING PLAN (CSPP).
 4. UNLESS OTHERWISE NOTED, MAXIMUM BARRICADE SPACING SHALL BE 10' O.C.

LOW PROFILE AIRCRAFT BARRICADE (MOVEMENT AREAS)

1
GC-101

SCALE: NONE

BY	DESCRIPTION	DATE	REV.

STEAMBOAT SPRINGS AIRPORT - BOB ADAMS FIELD
 STEAMBOAT SPRINGS, COLORADO
 TERMINAL AREA IMPROVEMENTS (PACKAGE 1)

CSPP - PHASE OVERVIEW

JOB NO.: 22A25311
 DATE: FEB 2024
 DESIGNED BY: JMH
 DRAWN BY: AA

BAR IS ONE INCH ON ORIGINAL DRAWING
 IF NOT ONE INCH ON THIS SHEET, ADJUST SCALES ACCORDINGLY.

DRAWING NUMBER
GC-101

SHEET NUMBER
7

File: L:\2022\22A25311 - SBS Terminal Area Imp Design\Drawings\SBS_PKG_RHB-GC-101.dwg Last Save: 2/23/2024 12:12 PM Last saved by: TEDilbeck
 Last plotted by: Dilbeck, Teague E Plot Style: AECmonochrome.ctb Plot Scale: 1:1 Plot Date: 3/11/2024 10:49 AM Plotter used: DWG To PDF.pc3