



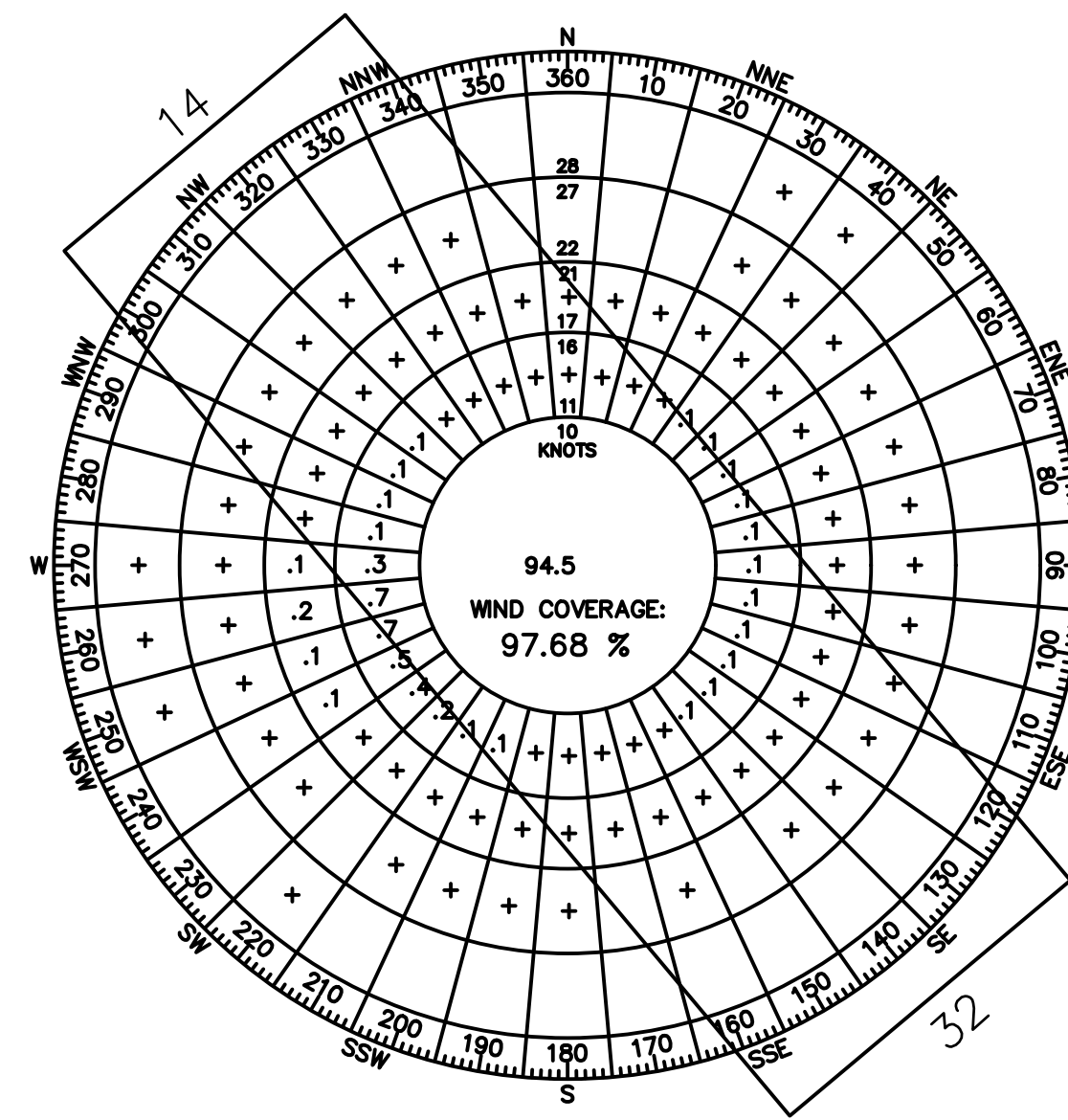
**RUNWAY DATA**

DESCRIPTION	RUNWAY 14 / 32			
	RUNWAY 14		RUNWAY 32	
	EXISTING	ULTIMATE	EXISTING	ULTIMATE
RUNWAY DESIGN CODE (RDC)	B-II-VIS	SAME	B-II-5000	SAME
APPROACH REFERENCE CODE (APRC)	B-II-VIS	SAME	B-II-5000	SAME
DEPARTURE REFERENCE CODE (DPRC)	B-II	SAME	B-II	SAME
APPROACH VISIBILITY MINIMUMS	VISUAL	SAME	1 1/4 MILE	1 MILE
APPROACH TYPE	VISUAL	SAME	NPI	SAME
14 CFR PART 77 APPROACH CATEGORY (SLOPE)	20:1	SAME	34:1	SAME
APPROACH SURFACE PENETRATIONS	NONE	SAME	NONE	SAME
RUNWAY IDENTIFICATION	OTHER THAN UTILITY	SAME	OTHER THAN UTILITY	SAME
DEPARTURE SURFACE (40:1 SLOPE)	YES	SAME	YES	SAME
AERONAUTICAL SURVEY EQUIPMENT	NOT VERTICALLY GUIDED	SAME	NOT VERTICALLY GUIDED	SAME
THRESHOLD SITING SURFACE RUNWAY TYPE	TYPE 3	SAME	TYPE 4	SAME
THRESHOLD SITING SURFACE PENETRATIONS	NONE	SAME	NONE	SAME
LINE OF SIGHT REQUIREMENT MET	YES	SAME	YES	SAME
RUNWAY LENGTH	4,452'	5,600'	4,452'	5,600'
RUNWAY WIDTH	100'	SAME	100'	SAME
RUNWAY SHOULDER WIDTH	NONE	SAME	NONE	SAME
RUNWAY BLAST PAD DIMENSIONS (LENGTH x WIDTH)	NONE	SAME	NONE	SAME
RUNWAY END LATITUDE	40° 31' 18.10" N	40° 31' 28.20" N	40° 30' 38.94" N	SAME
RUNWAY END LONGITUDE	106° 52' 11.82" W	106° 52' 18.60" W	106° 51' 45.54" W	SAME
RUNWAY END ELEVATION	6874.6'	6872.7'	6881.9'	SAME
DISPLACED THRESHOLD LATITUDE	NA	SAME	40° 30' 44.22" N	SAME
DISPLACED THRESHOLD LONGITUDE	NA	SAME	106° 51' 49.08" W	SAME
DISPLACED THRESHOLD ELEVATION	NA	SAME	6880.9'	SAME
DISPLACED THRESHOLD DISTANCE	NA	SAME	600'	SAME
RUNWAY TOUCHDOWN ZONE ELEVATION	6,876.2'	6,874.3'	6,879.3'	SAME
RUNWAY HIGH POINT ELEVATION	6,881.9'	SAME	6,881.9'	SAME
RUNWAY LOW POINT ELEVATION	6,874.6'	6,872.7'	6,874.6'	6,872.7'
TRUE BEARING	S 26° 14' 25" E	SAME	S 26° 14' 25" E	SAME
EFFECTIVE GRADIENT (IN %)	1.0%	SAME	-1.0%	SAME
MAXIMUM GRADIENT (IN %)	1.0%	SAME	-1.0%	SAME
PAVEMENT SURFACE TYPE	ASPHALT	SAME	ASPHALT	SAME
PAVEMENT STRENGTH - PCN	5/F/B/Y/U	SAME	5/F/B/Y/U	SAME
<b>PAVEMENT STRENGTH (LBS)</b>				
SINGLE WHEEL	50,000	SAME	50,000	SAME
DUAL WHEEL	60,000	SAME	60,000	SAME
DUAL TANDEM WHEEL	N/A	SAME	N/A	SAME
DOUBLE DUAL TANDEM WHEEL	N/A	SAME	N/A	SAME
PAVEMENT SURFACE TREATMENT	GRVD	SAME	GRVD	SAME
RUNWAY CL TO PARALLEL TAXIWAY CL SEPARATION	SEE TAXIWAY DATA TABLE			
RUNWAY CL TO HOLDLINE SEPARATION	200'	SAME	200'	SAME
RUNWAY LIGHTING	HIRL	SAME	HIRL	SAME
RUNWAY MARKING	BSC	SAME	NPI	SAME
VISUAL APPROACH AIDS	NONE	SAME	PAPI / REIL	SAME
INSTRUMENT APPROACH AIDS	VOR, GPS	SAME	VOR, GPS	SAME
PERCENT WIND COVERAGE	SEE WIND DATA TABLE			
<b>RUNWAY PROTECTION ZONE (RPZ)</b>				
INNER WIDTH (APP. / DEP.)	500'/500'	SAME	500'/500'	SAME
OUTER WIDTH (APP. / DEP.)	700'/700'	SAME	700'/700'	SAME
LENGTH (APP. / DEP.)	1,000' / 1,000'	SAME	1,000' / 1,000'	SAME
<b>RUNWAY SAFETY AREA (RSA)</b>				
LENGTH BEYOND RUNWAY END (EXT. / REQ.)	300' / 300'	SAME	300' / 300'	SAME
WIDTH (EXT. / REQ.)	150' / 150'	SAME	150' / 150'	SAME
<b>RUNWAY OBJECT FREE AREA (ROFA)</b>				
LENGTH BEYOND RUNWAY END (EXT. / REQ.)	600' / 300'	SAME	600' / 300'	SAME
WIDTH (EXT. / REQ.)	500'/500'	SAME	500'/500'	SAME
<b>RUNWAY OBSTACLE FREE ZONE (OFZ)</b>				
LENGTH BEYOND RUNWAY END (EXT. / REQ.)	200' / 200'	SAME	200' / 200'	SAME
WIDTH (EXT. / REQ.)	400' / 400'	SAME	400' / 400'	SAME

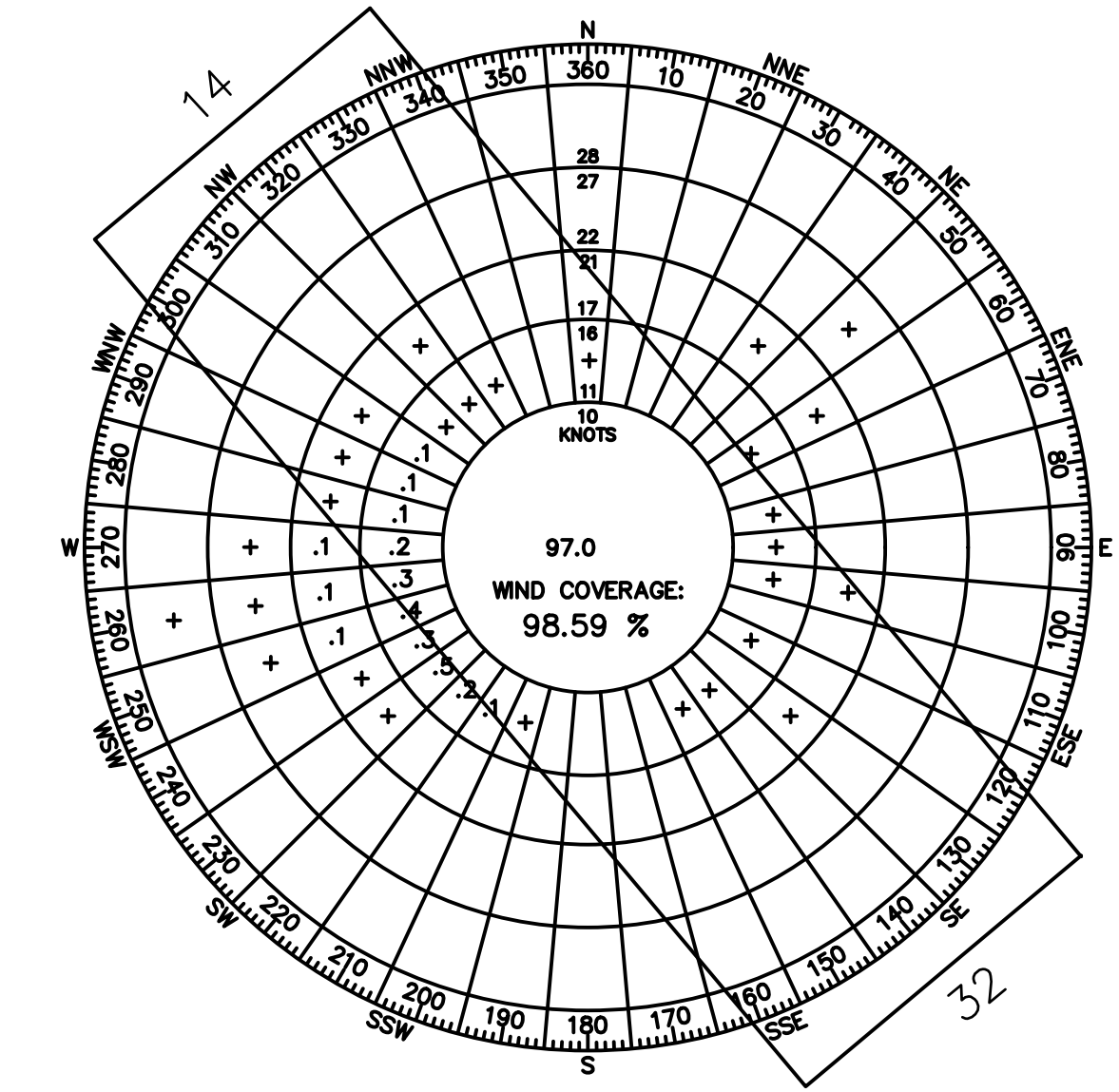
**FAA NON-STANDARD CONDITIONS**

DESIGN STANDARD	REQUIREMENT	EXISTING	ACTION
NON-STANDARD TAXIWAY GEOMETRY	30° OR 90° ANGLE	TWY A NON-STANDARD ANGLE	REMOVE AND RELOCATE
DIRECT ACCESS FROM APRON AREAS TO RUNWAY	DISCOURAGED	YES	REMOVE AND RELOCATE
MIDDLE THIRD TAXIWAY CONNECTORS	DISCOURAGED	TAXIWAYS A AND B	REMOVE AND RELOCATE
OBJECTS IN ROFA	DISCOURAGED	SOUTH WINDSOCK	REMOVE AND RELOCATE

**ALL WEATHER**



**IFR**



**TAXIWAY DATA**

DESCRIPTION	REQUIREMENT	TAXIWAY A		TAXIWAY B		TAXIWAY P	
		EXISTING	ULTIMATE	EXISTING	ULTIMATE	EXISTING	ULTIMATE
<b>TAXIWAY DESIGN STANDARDS</b>							
TAXIWAY DESIGN GROUP (TDG)	2	2	SAME	2	SAME	2	SAME
TAXIWAY MATERIAL		ASPHALT	SAME	ASPHALT	SAME	ASPHALT	SAME
TAXIWAY WIDTH	35'	70'	35'	65'	35'	50'	35'
TAXIWAY EDGE SAFETY MARGIN (TESM)	7.5'	7.5'	SAME	7.5'	SAME	7.5'	SAME
TAXIWAY SHOULDER WIDTH	15'	NONE	15'	NONE	15'	NONE	15'
TAXIWAY LIGHTING	MITL	REFLECTORS	MITL	REFLECTORS	MITL	REFLECTORS	MITL
RUNWAY CL TO PARALLEL TAXIWAY CL SEPARATION	240	N/A	N/A	N/A	N/A	300'	240'
<b>TAXIWAY PROTECTION</b>							
TAXIWAY SAFETY AREA (TSA)	79'	79'	SAME	79'	SAME	79'	SAME
TAXIWAY OBJECT FREE AREA (TOFA)	131'	131'	SAME	131'	SAME	131'	SAME
<b>WINGTIP CLEARANCE</b>							
TAXIWAY WINGTIP CLEARANCE	26'	26'	SAME	26'	SAME	26'	SAME
TAXIWAY CL TO FIXED OR MOVABLE OBJECT	65.5'	65.5'	SAME	65.5'	SAME	65.5'	SAME

**DECLARED DISTANCES**

	EXISTING		ULTIMATE	
	RUNWAY 14	RUNWAY 32	RUNWAY 14	RUNWAY 32
TAKEOFF RUN AVAILABLE (TORA)	4,452'	4,452'	5,600	5,600
TAKEOFF DISTANCE AVAILABLE (TODA)	4,452'	4,452'	5,600	5,600
ACCELERATE-STOP DISTANCE AVAILABLE (ASDA)	3,852'	4,452'	5,000	5,600
LANDING DISTANCE AVAILABLE (LDA)	3,852'	3,852'	5,000	5,000

**WIND DATA**

RUNWAY	CROSSWIND COVERAGE							
	ALL WEATHER				IFR			
	10.5 kts.	13 kts.	16 kts.	20 kts.	10.5 kts.	13 kts.	16 kts.	20 kts.
14	79.41%	79.80%	80.23%	80.35%	83.67%	83.87%	84.14%	84.19%
32	74.89%	76.08%	77.25%	77.65%	74.19%	74.86%	75.60%	75.84%
14/32	96.20%	97.78%	99.36%	99.87%	97.75%	98.62%	99.61%	99.90%

HTTPS://ADIP.FAA.GOV/WINDROSE/WINDDATADOWNLOAD.JSP ( YEAR 2011-2019)

**AIRPORT DATA**

DESCRIPTION	EXISTING	ULTIMATE
AIRPORT REFERENCE POINT (ARP) COORDINATES (NAD 83)	LATITUDE 40° 30' 58.52" N LONGITUDE 106° 51' 58.68" W	40° 31' 03.57" N 106° 52' 02.07" W
AIRPORT ELEVATION (MSL) (NAVD 88)	6,882.0'	SAME
AIRPORT REFERENCE CODE (ARC)	B-II	SAME
DESIGN AIRCRAFT	MAKE AND MODEL	BEECH KING AIR 200 CITATION CJ-4
	WINGSPAN	54.5' 50.8'
	UNDERCARRIAGE WIDTH	18.59' 13.5'
	APPROACH SPEED (KTS)	103 111
	MAX. TAKEOFF WEIGHT (LBS)	12,500 16,950
MEAN MAX TEMP. OF HOTTEST MONTH	82° (JULY.)	N/A
MAGNETIC VARIATION	9° 6' E / 2019 *	N/A
MISC. FACILITIES (AWOS, WIND CONES, ETC.)	AWOS, LIGHTED WIND CONE, SEGMENTED CIRCLE, MIRL	SAME
AIRPORT NAVAIDS	RWY 32 PAPI&REILS, BEACON	SAME
NPIAS SERVICE LEVEL	LOCAL	SAME
STATE AIRPORT CLASSIFICATION	GA-LOCAL	SAME

\*HTTPS://WWW.NGDC.NOAA.GOV/GEOMAG/CALCULATORS/MAGCALC.SHTML

**NOTES**

THE RUNWAY 32 THRESHOLD WAS DISPLACED DUE TO HISTORICAL USE BY A-III AIRCRAFT. THE DISPLACED THRESHOLD MUST REMAIN DUE TO INCOMPATIBLE USES IN THE RPZ.

REV	DATE	DESCRIPTION

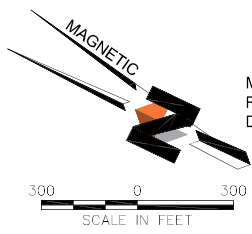
SHEET INFO	DESIGNED	DRAWN	CHECKED	APPROVED	LAST EDIT	PLOT DATE
KN	RT	JH, LW	KN	10/29/20	12/2/20	



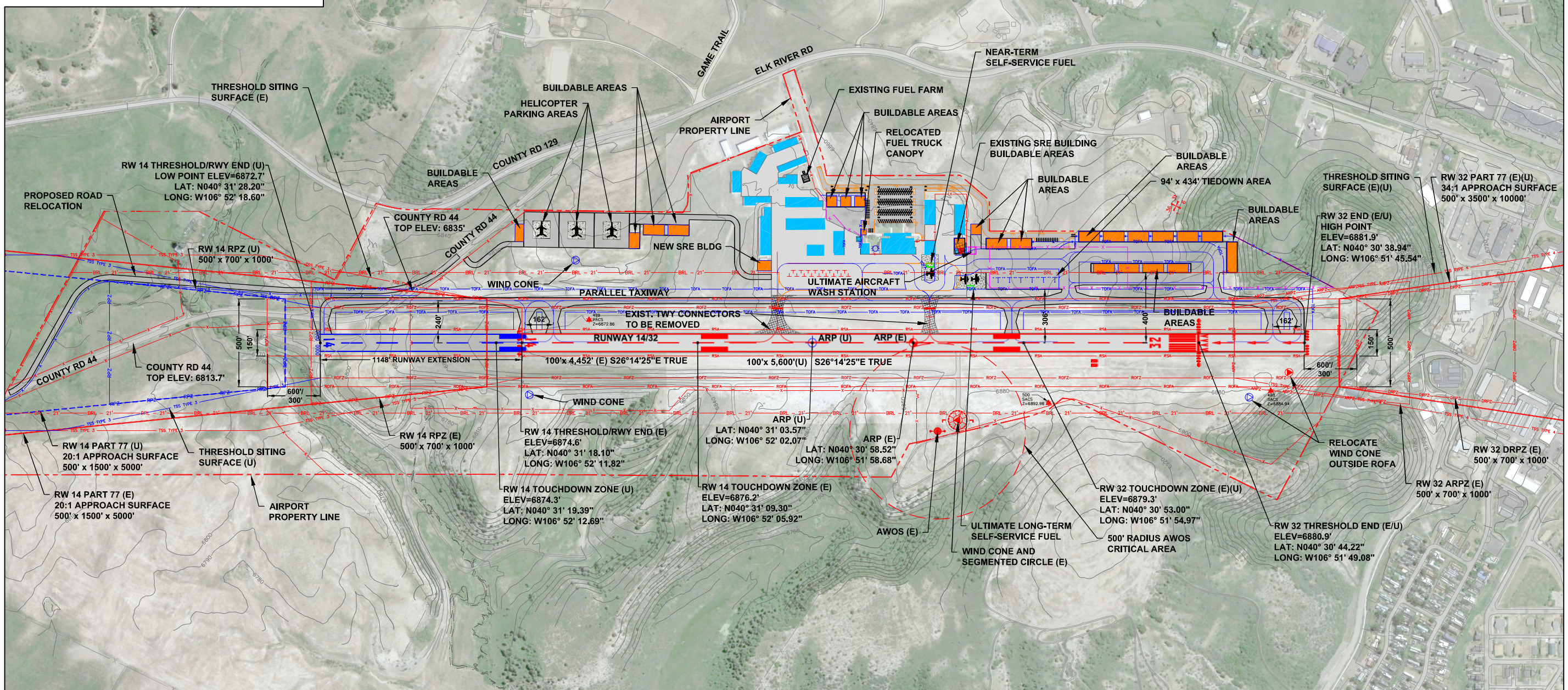
STEAMBOAT SPRINGS AIRPORT  
STEAMBOAT SPRINGS, COLORADO  
AIRPORT LAYOUT PLAN  
AIRPORT DATA SHEET

PROJECT	62139.01
DATE	12/2/20

\\DEN-FS-DEN-proj\projects\23\62139-01\65CAD\Aviation\ALP\SC-AV-DS-62139-01.dwg PLOT DATE: 2020-12-2 12:09 SAVED DATE: 2020-10-29 14:51 USER: rtemplod



MAG. DECL.: 9° 6' E  
 RATE OF CHANGE: 0° 6' W PER YEAR  
 DATE: 2019



\\DEN-FS-DEM-projects\23\62139-01\65CAD\A\action\AIP\SC-AV-AP\_62139-01.dwg PLOT DATE: 2020-12-2 12:09 SAVED DATE: 2020-12-02 12:04 USER: rtemplado

DESCRIPTION	EXISTING (E)	ULTIMATE (U)
AIRFIELD DEVELOPMENT		
STRUCTURAL / FACILITIES (BUILDING)		
RUNWAY DEVELOPMENT		
PAVEMENT REMOVAL	N/A	
BUILDING REMOVAL	N/A	
AIRPORT PROPERTY LINE (APL)		
RUNWAY PROTECTION ZONE (RPZ)		
RUNWAY SAFETY AREA (RSA)		
OBSTACLE FREE ZONE (OFZ)		
RUNWAY OBJECT FREE AREA (ROFA)		
TAXIWAY SAFETY AREA		

DESCRIPTION	EXISTING (E)	ULTIMATE (U)
APPROACH SURFACE		
THRESHOLD LIGHTS		
REIL		
VASI / PAPI		
TAXIWAY OBJECT FREE AREA (TOFA)		
BUILDING RESTRICTION LINE (BRL)		
THRESHOLD SITING SURFACE (TSS)		
SECURITY FENCE / WILDLIFE FENCE		
FENCE TO BE REMOVED	N/A	
PAVEMENT MARKING		
PAVEMENT MARKING TO BE REMOVED	N/A	

DESCRIPTION	EXISTING (E)	ULTIMATE (U)
AIRPORT REFERENCE POINT (ARP)		
AIRPORT BEACON		
WIND CONE / SEGMENTED CIRCLE		SAME
AIRCRAFT TIEDOWN		
SECTION CORNER		SAME
AWOS		SAME
PACS/ SACS		SAME
CONTOURS		
WIND CONE		
SELF-SERVICE FUEL	N/A	
DRAINAGE CULVERT		SAME

**FAA APPROVAL**

CONDITIONALLY APPROVED Dec 15, 2020  
 Subject to letter dated: \_\_\_\_\_

FEDERAL AVIATION ADMINISTRATION  
 DENVER AIRPORTS DISTRICT OFFICE

Date: Dec 15, 2020   
John Bauer (Dec 15, 2020 06:54 MST)

CASE NO. 2020-ANM-2512-NRA

**SPONSOR APPROVAL**

Gary Suiter (Dec 14, 2020 10:54 MST)

City of Steamboat Springs Date: Dec 14, 2020

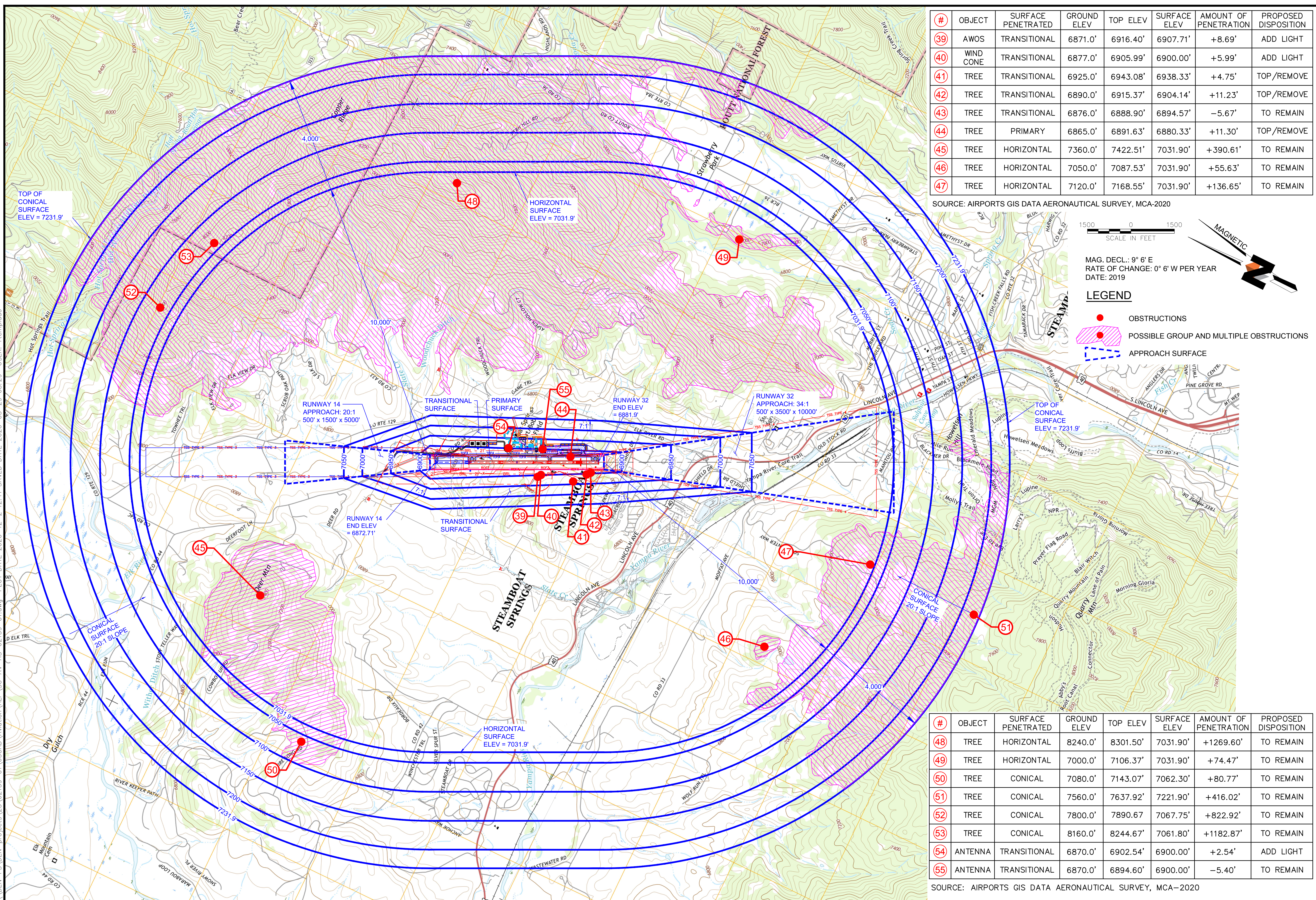
REV	DATE	DESCRIPTION	BY

WWW.DOWL.COM

STEAMBOAT SPRINGS AIRPORT  
 STEAMBOAT SPRINGS, COLORADO  
 AIRPORT LAYOUT PLAN  
 AIRPORT LAYOUT PLAN DRAWING

PROJECT	62139.01
DATE	12/2/20
© DOWL, 2020	
SHEET	3
of 10	

\\DEN-FS-DEN-projects\23162139-01\_65SCAD Aviation\ALP\SC-AV-AS-62139-01.dwg PLOT DATE 2020-12-2 12:11 SAVED DATE 2020-05-29 08:29 USER: rtemplo

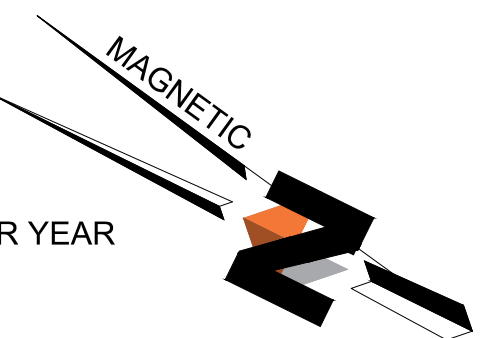


#	OBJECT	SURFACE PENETRATED	GROUND ELEV	TOP ELEV	SURFACE ELEV	AMOUNT OF PENETRATION	PROPOSED DISPOSITION
39	AWOS	TRANSITIONAL	6871.0'	6916.40'	6907.71'	+8.69'	ADD LIGHT
40	WIND CONE	TRANSITIONAL	6877.0'	6905.99'	6900.00'	+5.99'	ADD LIGHT
41	TREE	TRANSITIONAL	6925.0'	6943.08'	6938.33'	+4.75'	TOP/REMOVE
42	TREE	TRANSITIONAL	6890.0'	6915.37'	6904.14'	+11.23'	TOP/REMOVE
43	TREE	TRANSITIONAL	6876.0'	6888.90'	6894.57'	-5.67'	TO REMAIN
44	TREE	PRIMARY	6865.0'	6891.63'	6880.33'	+11.30'	TOP/REMOVE
45	TREE	HORIZONTAL	7360.0'	7422.51'	7031.90'	+390.61'	TO REMAIN
46	TREE	HORIZONTAL	7050.0'	7087.53'	7031.90'	+55.63'	TO REMAIN
47	TREE	HORIZONTAL	7120.0'	7168.55'	7031.90'	+136.65'	TO REMAIN

SOURCE: AIRPORTS GIS DATA AERONAUTICAL SURVEY, MCA-2020



MAG. DECL.: 9° 6' E  
RATE OF CHANGE: 0° 6' W PER YEAR  
DATE: 2019



**LEGEND**

- OBSTRUCTIONS
- POSSIBLE GROUP AND MULTIPLE OBSTRUCTIONS
- APPROACH SURFACE

#	OBJECT	SURFACE PENETRATED	GROUND ELEV	TOP ELEV	SURFACE ELEV	AMOUNT OF PENETRATION	PROPOSED DISPOSITION
48	TREE	HORIZONTAL	8240.0'	8301.50'	7031.90'	+1269.60'	TO REMAIN
49	TREE	HORIZONTAL	7000.0'	7106.37'	7031.90'	+74.47'	TO REMAIN
50	TREE	CONICAL	7080.0'	7143.07'	7062.30'	+80.77'	TO REMAIN
51	TREE	CONICAL	7560.0'	7637.92'	7221.90'	+416.02'	TO REMAIN
52	TREE	CONICAL	7800.0'	7890.67'	7067.75'	+822.92'	TO REMAIN
53	TREE	CONICAL	8160.0'	8244.67'	7061.80'	+1182.87'	TO REMAIN
54	ANTENNA	TRANSITIONAL	6870.0'	6902.54'	6900.00'	+2.54'	ADD LIGHT
55	ANTENNA	TRANSITIONAL	6870.0'	6894.60'	6900.00'	-5.40'	TO REMAIN

SOURCE: AIRPORTS GIS DATA AERONAUTICAL SURVEY, MCA-2020

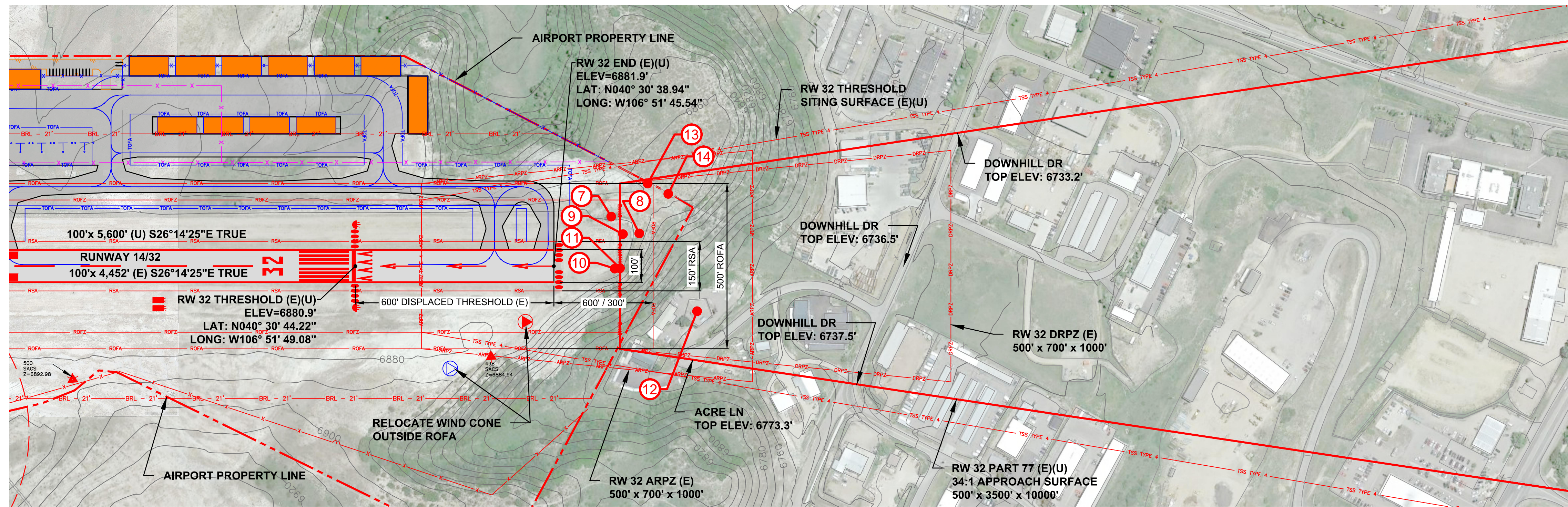
REV	DATE	DESCRIPTION

**DOWL**  
WWW.DOWL.COM

**STEAMBOAT SPRINGS AIRPORT**  
**STEAMBOAT SPRINGS, COLORADO**  
**AIRPORT LAYOUT PLAN**  
**AIRPORT AIRSPACE DRAWING**

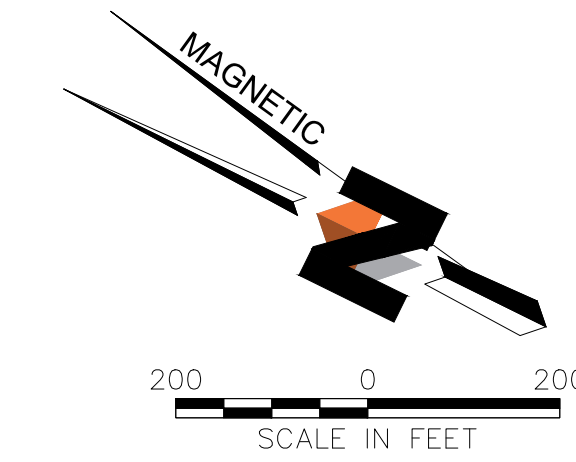
PROJECT	62139.01
DATE	12/2/20
© DOWL 2020	
SHEET 4	
of 10	





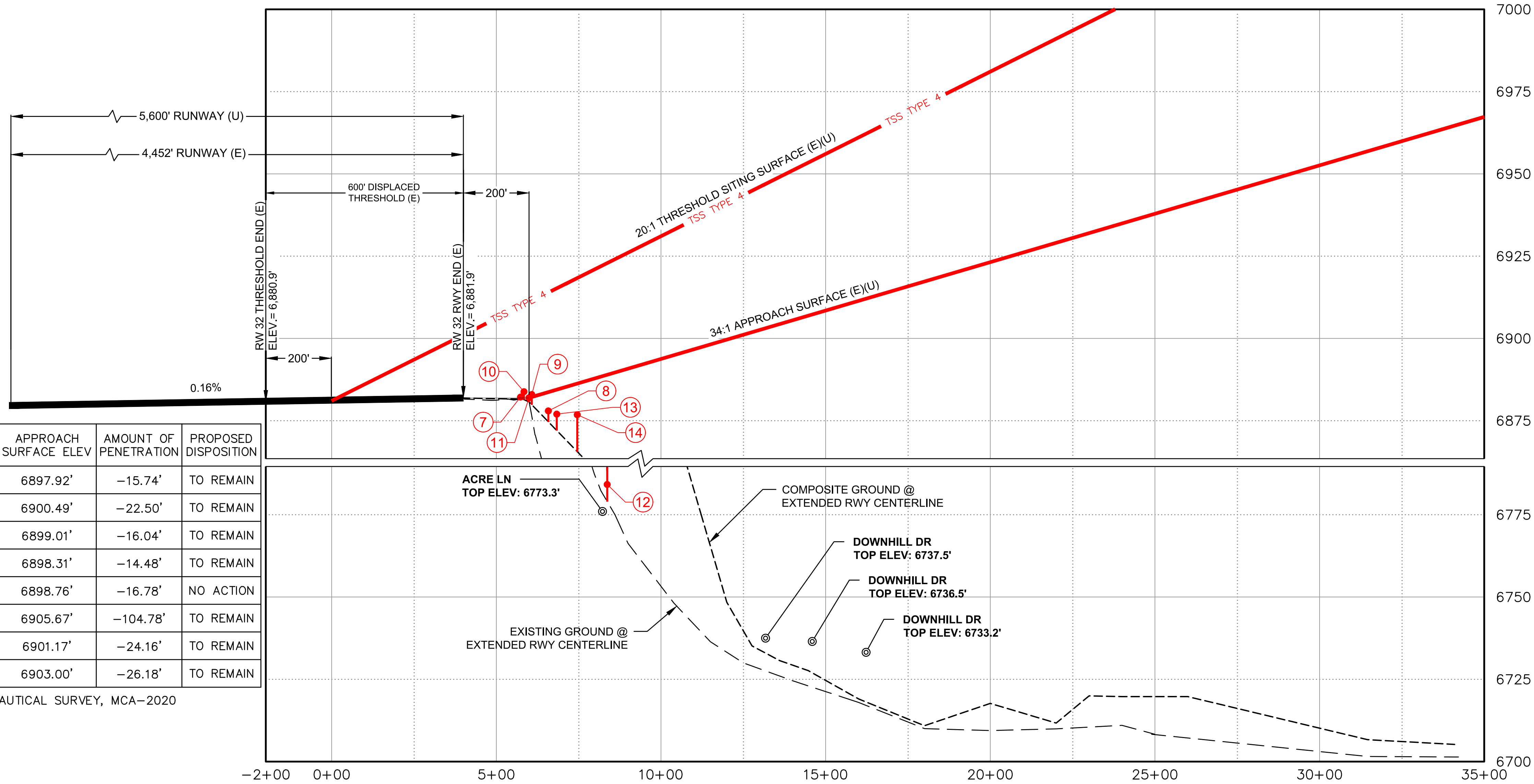
**RUNWAY 32 PLAN**  
SCALE: 1" = 200' HORZ

MAG. DECL.: 9° 6' E  
RATE OF CHANGE: 0° 6' W PER YEAR  
DATE: 2019



**LEGEND**

- OBSTRUCTIONS
- ▨ POSSIBLE GROUP AND MULTIPLE OBSTRUCTIONS
- ▴ APPROACH SURFACE (E)
- ▴ APPROACH SURFACE (U)



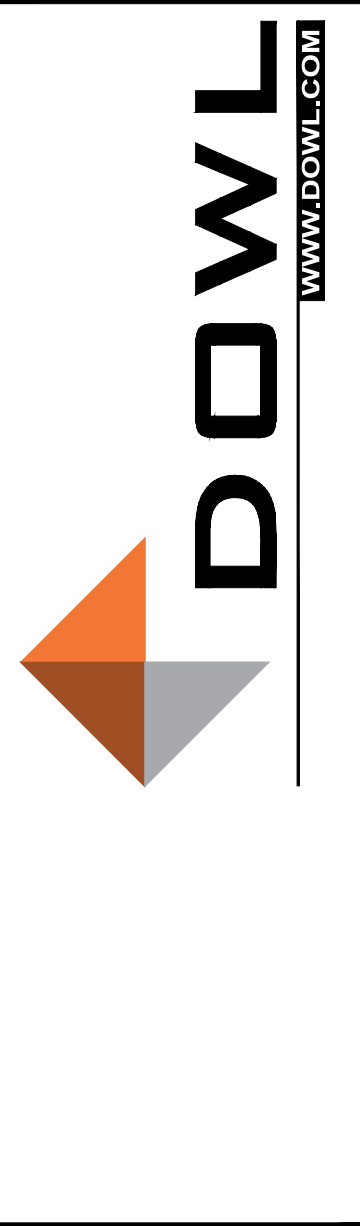
**RUNWAY 32 PROFILE**  
SCALE: 1" = 200' HORZ & 1" = 20' VERT

#	OBJECT	GROUND SURFACE ELEV	TOP ELEV	APPROACH SURFACE ELEV	AMOUNT OF PENETRATION	PROPOSED DISPOSITION
7	TREE	6868.57'	6882.18'	6897.92'	-15.74'	TO REMAIN
8	TREE	6864.46'	6877.99'	6900.49'	-22.50'	TO REMAIN
9	SHRUB	6870.03'	6882.97'	6899.01'	-16.04'	TO REMAIN
10	SHRUB	6870.03'	6883.83'	6898.31'	-14.48'	TO REMAIN
11	GROUND	6870.02'	6881.98'	6898.76'	-16.78'	NO ACTION
12	BLDG	6759.46'	6800.89'	6905.67'	-104.78'	TO REMAIN
13	FENCE	6860.00'	6877.01'	6901.17'	-24.16'	TO REMAIN
14	FENCE	6860.00'	6876.82'	6903.00'	-26.18'	TO REMAIN

SOURCE: AIRPORTS GIS DATA AERONAUTICAL SURVEY, MCA-2020

REV	DATE	DESCRIPTION

SHEET INFO		DESIGNED	CHECKED	APPROVED	LAST EDIT	PLOT DATE
KN	RT	JH	LW	KN	6/9/20	12/2/20

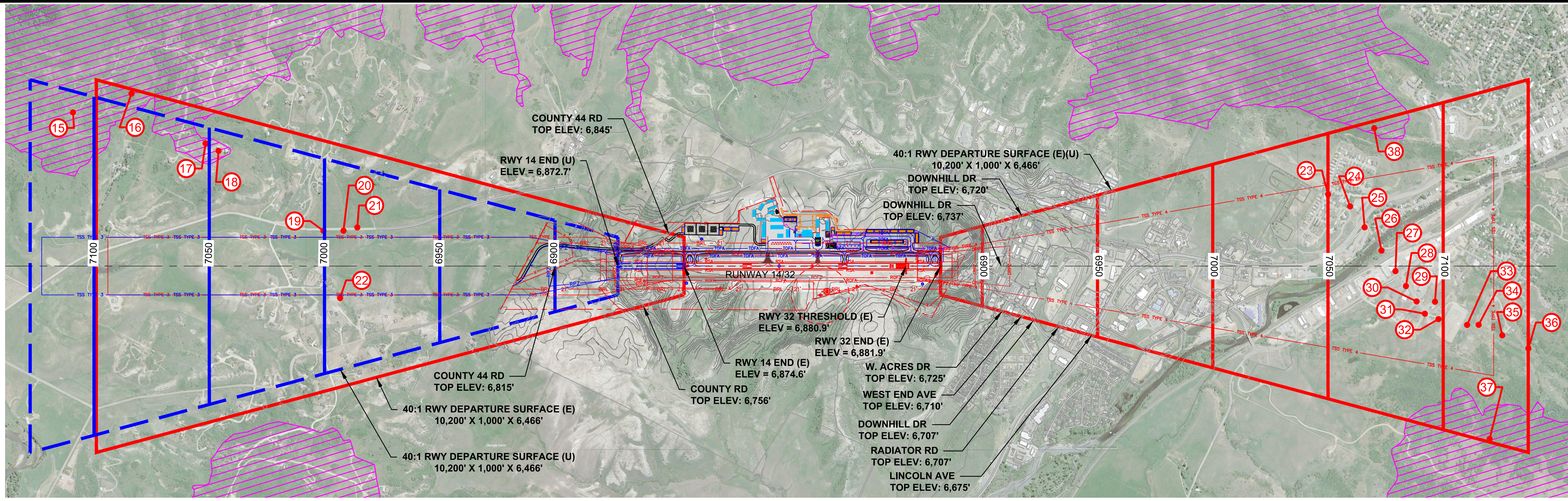


STEAMBOAT SPRINGS AIRPORT  
STEAMBOAT SPRINGS, COLORADO  
AIRPORT LAYOUT PLAN  
RWY 14 INNER PORTION OF THE APPROACH  
SURFACE DRAWING PLAN & PROFILE

PROJECT	62139.01
DATE	12/2/20

\\DEN-FS-DEN-projects\23\62139-01\65CAD\Aviation\ALP\SC-AV-IA-62139-01.dwg PLOT DATE 2020-12-12 12:12:12 SAVED DATE 2020-06-09 06:43 USER: rtemplado

\\DEN-FS\DEN-projects\23162139-01\_65CAD\Aviation\ALP\SC-AV-RDS-62139-01.dwg PLOT DATE 2020-12-2 12:13 SAVED DATE 2020-06-25 10:22 USER: rtemplado



**RUNWAY 14 PLAN**  
SCALE: 1" = 1000' HORZ

**RUNWAY 32**

**RUNWAY 32 PLAN**  
SCALE: 1" = 1000' HORZ

**RUNWAY 32**

#	OBJECT	GROUND SURFACE ELEV	TOP ELEV	DEPARTURE SURFACE ELEV	AMOUNT OF PENETRATION	PROPOSED DISPOSITION
15	TREE	7190.00'	7202.06'	7109.13'	+92.93'	TO REMAIN
16	TREE	7190.00'	7164.95'	7083.72'	+81.23'	TO REMAIN
17	TREE	7060.00'	7037.90'	7051.62'	-13.72'	TO REMAIN
18	TREE	7070.00'	7025.93'	7045.97'	-20.04'	TO REMAIN
19	POWER POLE	6770.00'	6827.89'	7000.45'	-172.56'	TO REMAIN
20	POWER POLE	6780.00'	6830.35'	6991.77'	-161.42'	TO REMAIN
21	POWER POLE	6780.00'	6831.21'	6985.76'	-154.55'	TO REMAIN
22	TREE	6790.00'	6846.37'	6993.45'	-147.08'	TO REMAIN

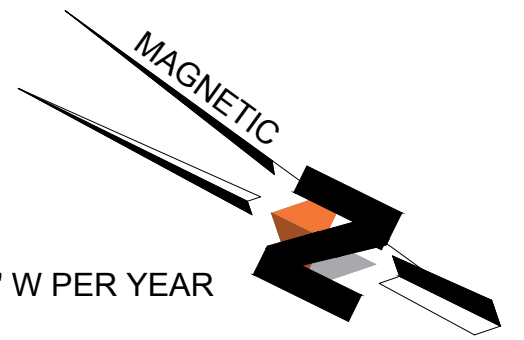
#	OBJECT	GROUND SURFACE ELEV	TOP ELEV	DEPARTURE SURFACE ELEV	AMOUNT OF PENETRATION	PROPOSED DISPOSITION
23	POWER TRANS	6760.00'	6825.60'	7050.07'	-224.47'	TO REMAIN
24	POWER TRANS	6720.00'	6813.79'	7059.62'	-245.83'	TO REMAIN
25	POWER TRANS	6680.00'	6745.15'	7065.90'	-320.75'	TO REMAIN
26	POWER TRANS	6660.00'	6770.08'	7073.24'	-303.16'	TO REMAIN
27	POWER TRANS	6640.00'	6766.76'	7079.30'	-312.54'	TO REMAIN
28	POWER TRANS	6690.00'	6762.21'	7083.84'	-321.63'	TO REMAIN
29	POWER TRANS	6710.00'	6966.46'	7096.45'	-129.99'	TO REMAIN
30	POWER TRANS	6700.00'	6753.72'	7088.47'	-334.75'	TO REMAIN

#	OBJECT	GROUND SURFACE ELEV	TOP ELEV	DEPARTURE SURFACE ELEV	AMOUNT OF PENETRATION	PROPOSED DISPOSITION
31	POWER TRANS	6710.00'	6754.34'	7092.06'	-337.72'	TO REMAIN
32	POWER TRANS	6720.00'	6784.06'	7097.96'	-313.90'	TO REMAIN
33	POWER TRANS	6780.00'	6825.06'	7110.37'	-285.31'	TO REMAIN
34	POWER TRANS	6800.00'	6846.59'	7115.38'	-268.79'	TO REMAIN
35	POWER TRANS	6840.00'	6885.83'	7125.63'	-239.80'	TO REMAIN
36	POWER TRANS	6880.00'	6924.57'	7136.97'	-212.40'	TO REMAIN
37	TREE	7090.00'	7119.70'	7119.60'	+0.10'	TO REMAIN
38	TREE	7000.00'	7073.13'	7070.08'	+3.05'	TO REMAIN

SOURCE: AIRPORTS GIS DATA AERONAUTICAL SURVEY, MCA-2020

SOURCE: AIRPORTS GIS DATA AERONAUTICAL SURVEY, MCA-2020

SOURCE: AIRPORTS GIS DATA AERONAUTICAL SURVEY, MCA-2020

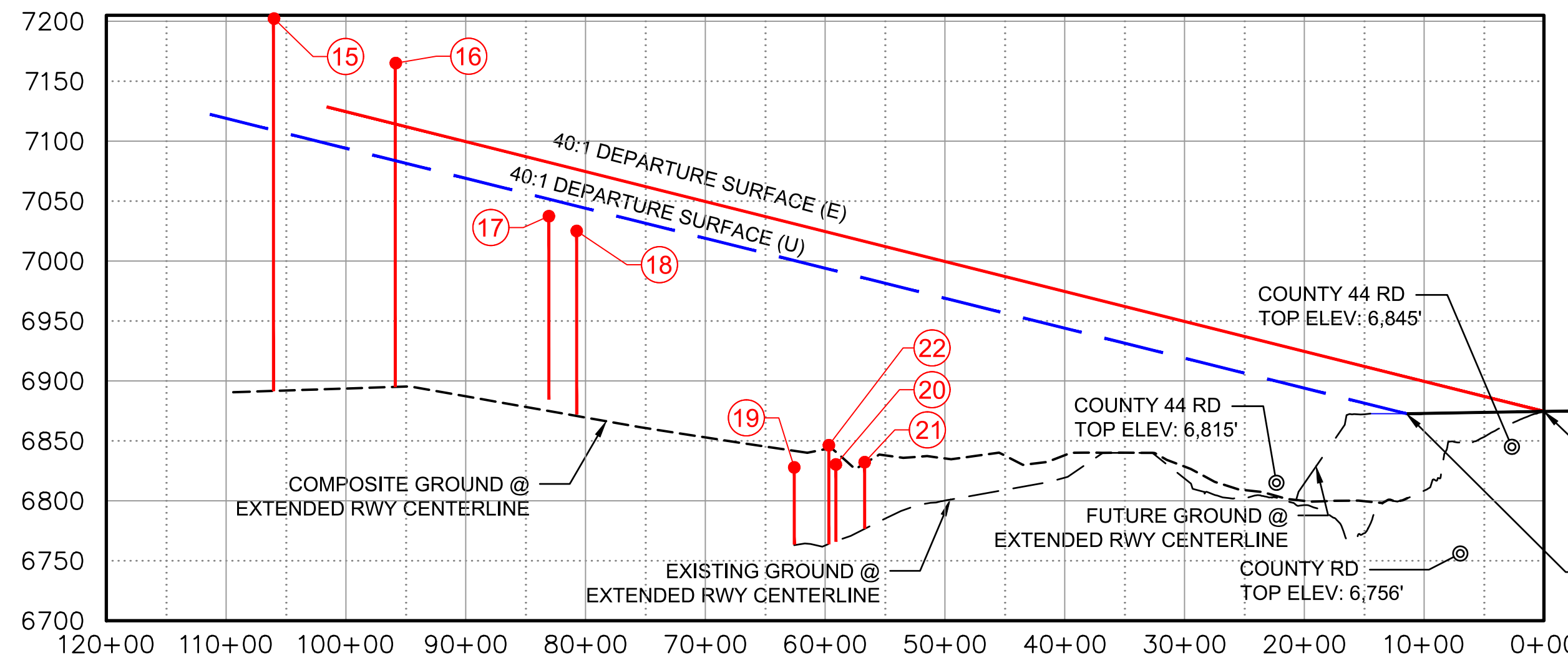


MAG. DECL.: 9° 6' E  
RATE OF CHANGE: 0° 6' W PER YEAR  
DATE: 2019

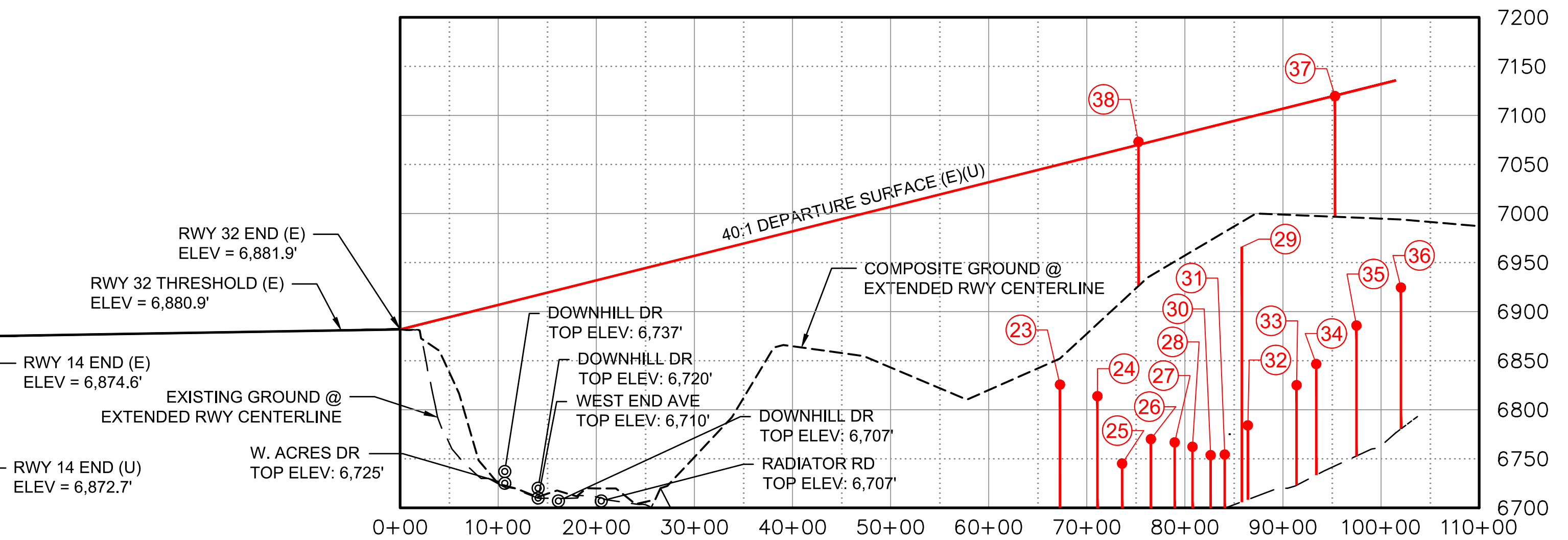


**LEGEND**

- OBSTRUCTIONS
- POSSIBLE GROUP AND MULTIPLE OBSTRUCTIONS
- DEPARTURE SURFACE (E)
- - - DEPARTURE SURFACE (U)



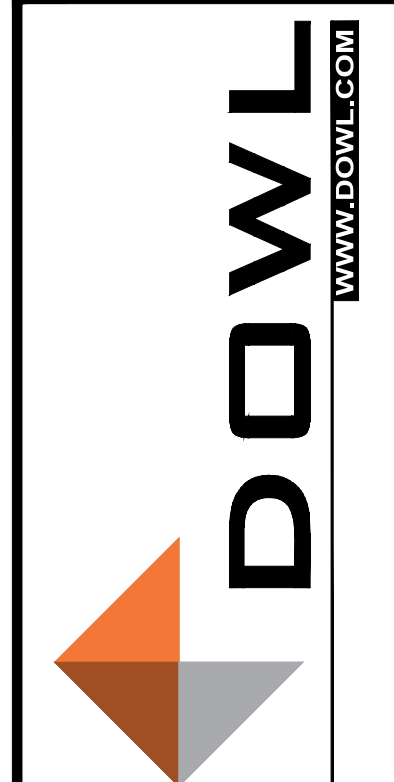
**RUNWAY 14 PROFILE**  
SCALE: 1" = 1000' HORZ & 1" = 100' VERT



**RUNWAY 32 PROFILE**  
SCALE: 1" = 1000' HORZ & 1" = 100' VERT

REV	DATE	DESCRIPTION	BY

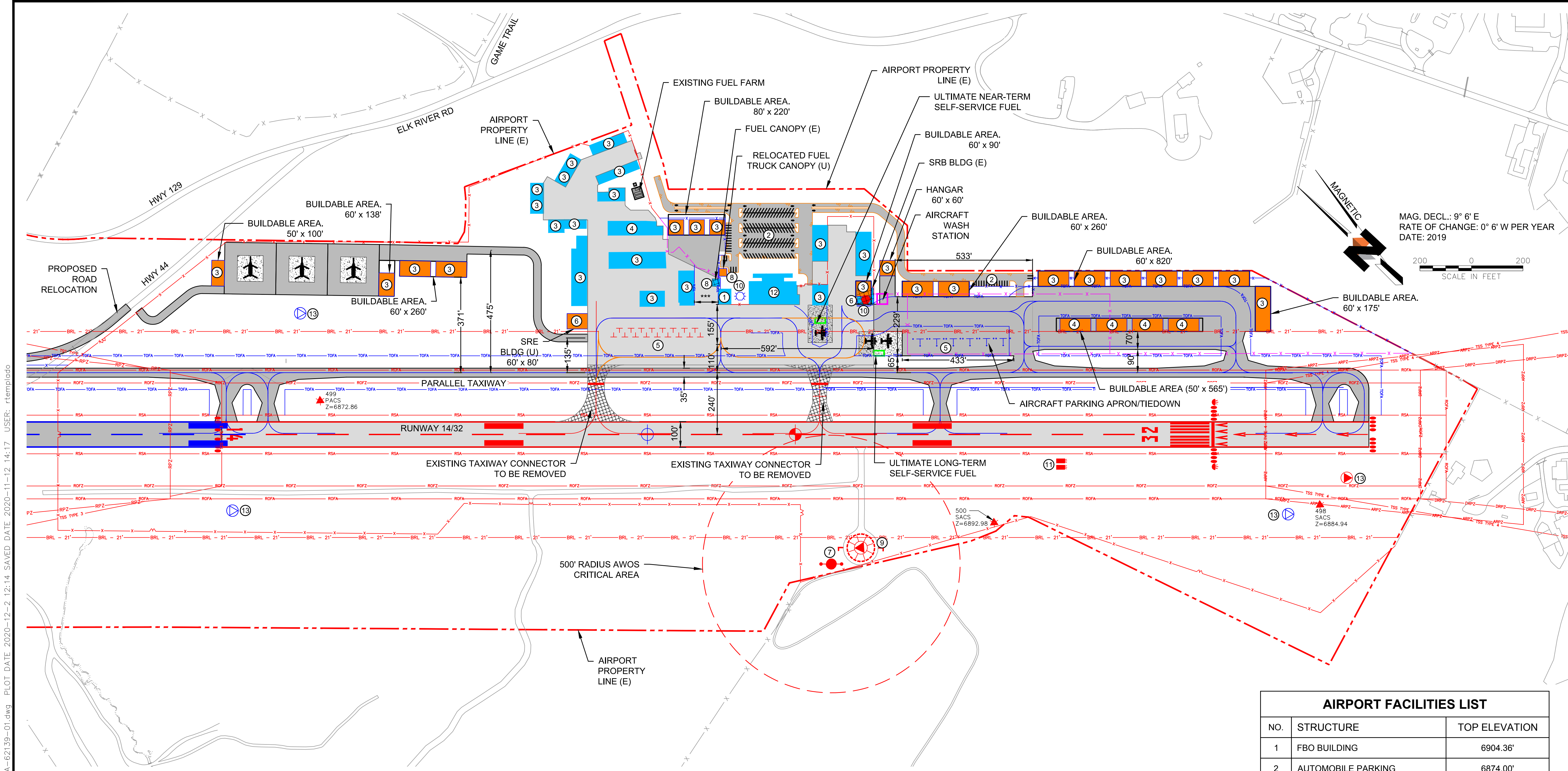
SHEET INFO	KN	RT	JH, LW	KN	6/25/20	12/2/20
DESIGNED						
DRAWN						
CHECKED						
APPROVED						
LAST EDIT						
PLOT DATE						



**STEAMBOAT SPRINGS AIRPORT**  
**STEAMBOAT SPRINGS, COLORADO**  
**AIRPORT LAYOUT PLAN**  
**RWY 14/32 DEPARTURE SURFACE DRAWING**  
**PLAN & PROFILE**

PROJECT	62139.01
DATE	12/2/20

© DOWL 2020  
SHEET 7



REV	DATE	DESCRIPTION	BY

SHEET INFO		DESIGNED	KN	DRAWN	RT	CHECKED	JH, LW	APPROVED	KN	LAST EDIT	11/12/20	PLOT DATE	12/2/20
------------	--	----------	----	-------	----	---------	--------	----------	----	-----------	----------	-----------	---------

**DOWL**  
WWW.DOWL.COM

**STEAMBOAT SPRINGS AIRPORT  
STEAMBOAT SPRINGS, COLORADO  
AIRPORT LAYOUT PLAN  
TERMINAL AREA DRAWING**

PROJECT	62139.01
DATE	12/2/20

© DOWL 2020  
SHEET 8  
of 10

\\DEN-FS-DEN-projects\23\62139-01\65CAD\Aviation\ALP\SC-AV-TA-62139-01.dwg PLOT DATE: 2020-12-2 12:14 SAVED DATE: 2020-11-12 14:17 USER: rtemplado

LEGEND		
DESCRIPTION	EXISTING (E)	ULTIMATE (U)
AIRFIELD DEVELOPMENT		
STRUCTURAL / FACILITIES (BUILDING)		
RUNWAY DEVELOPMENT		
PAVEMENT REMOVAL	N/A	
BUILDING REMOVAL	N/A	
AIRPORT PROPERTY LINE (APL)		
RUNWAY PROTECTION ZONE (RPZ)		
RUNWAY SAFETY AREA (RSA)		
OBSTACLE FREE ZONE (OFZ)		
RUNWAY OBJECT FREE AREA (ROFA)		
TAXIWAY SAFETY AREA		

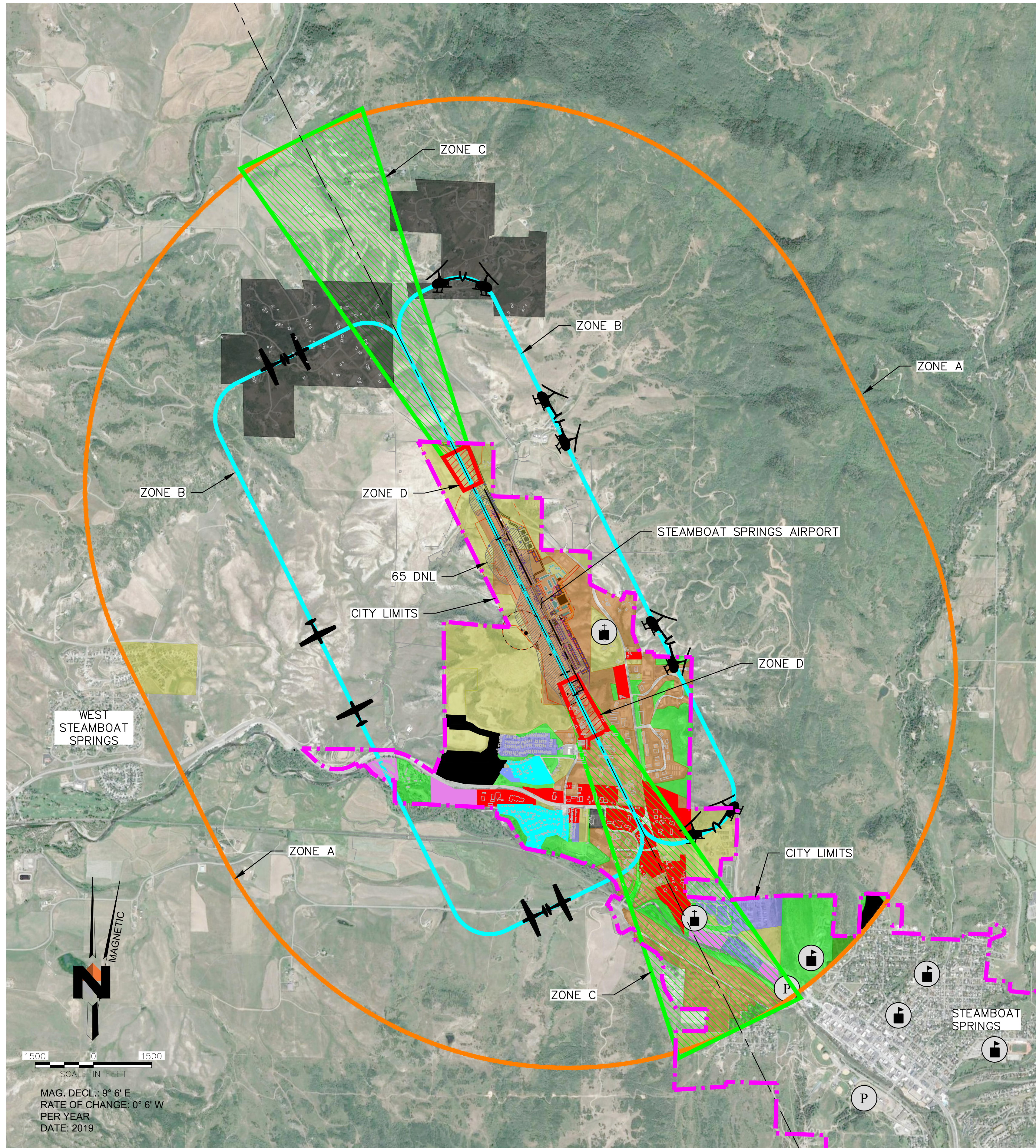
LEGEND		
DESCRIPTION	EXISTING (E)	ULTIMATE (U)
APPROACH SURFACE		
THRESHOLD LIGHTS		
REIL		
VASI / PAPI		
TAXIWAY OBJECT FREE AREA (TOFA)		
BUILDING RESTRICTION LINE (BRL)		
THRESHOLD SITING SURFACE (TSS)		
SECURITY FENCE / WILDLIFE FENCE		
FENCE TO BE REMOVED	N/A	
PAVEMENT MARKING		
PAVEMENT MARKING TO BE REMOVED	N/A	

LEGEND		
DESCRIPTION	EXISTING (E)	ULTIMATE (U)
AIRPORT REFERENCE POINT (ARP)		
AIRPORT BEACON		
WIND CONE / SEGMENTED CIRCLE		SAME
AIRCRAFT TIEDOWN		
AWOS		SAME
PACS / SACS		SAME
CONTOURS		
WIND CONE		
SELF-SERVICE FUEL	N/A	
DRAINAGE CULVERT		SAME

AIRPORT FACILITIES LIST		
NO.	STRUCTURE	TOP ELEVATION
1	FBO BUILDING	6904.36'
2	AUTOMOBILE PARKING	6874.00'
3	BOX HANGARS	6904.85' **
4	T-HANGARS	6898.87' **
5	AIRCRAFT TIE DOWNS	6863.00'
6	SRE BUILDING	6900.74'
7	AWOS	6919.40'
8	FUEL CANOPY	6894.65'
9	WIND CONE/SEGMENTED CIRCLE	6905.99'
10	BEACON	6879.76' *
11	PAPI	6877.93'
12	AIRPORT OFFICE BUILDING	6914.83'
13	WIND CONE	6890.30' **

\* HEIGHT IS UNKNOWN  
 \*\* MAXIMUM ELEVATION PER MCA SURVEY 2020  
 \*\*\* GROUP I TOFA. AIRCRAFT 53' IN WINGSPAN AND OVER MUST BE TUGGED.

\\DEN-FS-DEN-projects\23\62139-01\65CAD\Aviation\ALP\SC-AV-LU-62139-01.dwg PLOT DATE: 2020-12-2 12:15 SAVED DATE: 2020-06-30 16:24 USER: rtemplado



**LAND USE COMPATIBILITY GUIDELINES**

LAND USE CATEGORY	ZONE A AIRPORT INFLUENCE (AIZ)	ZONE B TRAFFIC PATTERN (TPZ)	ZONE C APPROACH (AZ)	ZONE D RUNWAY PROTECTION (RPZ)
YES (Y)				
NO (N)				
MITIGATE (M)				
<b>RESIDENTIAL</b>				
SINGLE-FAMILY, NURSING HOMES, MOBILE HOMES, MULTI-FAMILY, APARTMENTS, CONDOMINIUMS	Y	Y	M2	N3
TRANSIENT LODGING, HOTEL, MOTEL				
<b>PUBLIC</b>				
SCHOOLS, LIBRARIES, HOSPITALS	Y	Y	M2	N3
CHURCHES, AUDITORIUMS, CONCERT HALLS	Y	Y	M2	N3
TRANSPORTATION, PARKING, CEMETERIES	Y	Y	Y	N3
<b>COMMERCIAL AND INDUSTRIAL</b>				
OFFICES, RETAIL TRADE,	Y	Y	Y	N3
SERVICE COMMERCIAL, WHOLESALE TRADE, WAREHOUSING, LIGHT INDUSTRIAL, GENERAL MANUFACTURING, UTILITIES	Y	Y	Y	N3
EXTRACTIVE INDUSTRY	Y	Y	Y	N3
<b>AGRICULTURAL AND RECREATIONAL</b>				
CROPLAND	Y	Y	Y	Y
LIVESTOCK BREEDING	Y	Y	Y	N3
PARKS, PLAYGROUNDS, ZOOS, GOLF COURSES, RIDING STABLES, WATER RECREATION	Y	Y	Y	N3
OUTDOOR SPECTATOR SPORTS	Y	Y	M2	N3
AMPHITHEATERS	Y	M3	M2	N3
OPEN SPACE	Y	Y	Y	Y

**NOTES:**

- PROPERTY WITHIN ZONE A (AIRPORT INFLUENCE AREA, WHICH INCLUDES ZONE B, C, AND D) REQUIRES DISCLOSURE OF AIRPORT PROXIMITY AND DEDICATED AVIGATION EASEMENT.
- RESIDENTIAL USES ARE DISCOURAGED. MITIGATION THROUGH AVIGATION EASEMENTS AND/OR PROPERTY DISCLOSURES ENCOURAGED.
- EXISTING INCOMPATIBLE LAND USES ARE ALLOWED TO REMAIN.

**LEGEND**

	RUNWAY PROTECTION ZONE (RPZ) AS DIMENSIONED ON SHEET 3 OF AIRPORT LAYOUT PLAN.		APPROACH SURFACE AS DESCRIBED ON THE FAR PART 77 DRAWING OF THE AIRPORT LAYOUT PLAN.
	AIRPORT INFLUENCE ZONE EXTENDS 10,000' HORIZONTALLY FROM RUNWAY		TYPICAL TRAFFIC PATTERN DIRECTION AND FLIGHT TRACK AREA.
	CITY LIMITS		CHURCH
	65 DNL (DAY-NIGHT AVERAGE SOUND LEVEL)		SCHOOL
			PARK

**LEGEND**

DESCRIPTION	
AGRICULTURAL AND FORESTRY (AF)	
INDUSTRIAL (I)	
LOW DENSITY RESIDENTIAL (LDR)	
MEDIUM DENSITY RESIDENTIAL (MDR)	
HIGH DENSITY RESIDENTIAL (HDR)	
MOBILE HOME RESIDENTIAL (MHR)	
MOUNTAIN RESIDENTIAL ESTATES (MRE)	
PLANNED UNIT DEVELOPMENT (PUD)	
OPEN SPACE & RECREATION (OS)	
COMMERCIAL NEIGHBORHOOD	
COMMUNITY COMMERCIAL	
COMMERCIAL SERVICES	
MULTIFAMILY RESIDENTIAL TWO, MEDIUM DENSITY	
MULTIFAMILY RESIDENTIAL THREE, HIGH DENSITY	

SOURCE: [HTTP://WWW.CO.ROULTT.CO.US/530/CITY-OF-STEAMBOAT-SPRINGS-MAPS](http://www.co.roultt.co.us/530/CITY-OF-STEAMBOAT-SPRINGS-MAPS)

**NOTICE OF PROPOSED CONSTRUCTION**

AN FAA FORM 7460-1, "NOTICE OF PROPOSED CONSTRUCTION OR ALTERATION" MUST BE SUBMITTED FOR ANY CONSTRUCTION OR ALTERATION (INCLUDING HANGARS AND OTHER ON-AIRPORT AND OFF-AIRPORT STRUCTURES, TOWERS, ETC.) WITHIN 20,000 HORIZONTAL FEET OF THE AIRPORT GREATER IN HEIGHT THAN AN IMAGINARY SURFACE EXTENDING OUTWARD AND UPWARD FROM THE RUNWAY AT A SLOPE OF 100 TO 1 OR GREATER IN HEIGHT THAN 200 FEET ABOVE GROUND LEVEL.

REV	DATE	DESCRIPTION

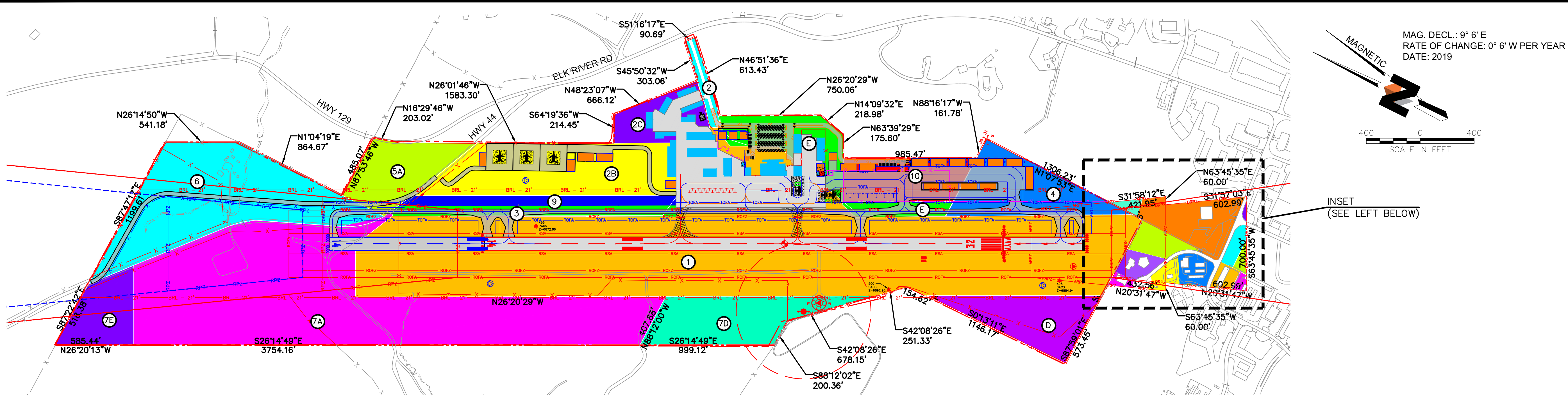
SHEET INFO	KN	RT	JH	LW	KN	6/30/20	12/2/20
DESIGNED							
DRAWN							
CHECKED							
APPROVED							
LAST EDIT							
PLOT DATE							



STEAMBOAT SPRINGS AIRPORT  
STEAMBOAT SPRINGS, COLORADO  
AIRPORT LAYOUT PLAN  
LAND USE DRAWING

PROJECT	62139.01
DATE	12/2/20
© DOWL 2020	
SHEET	9
of 10	

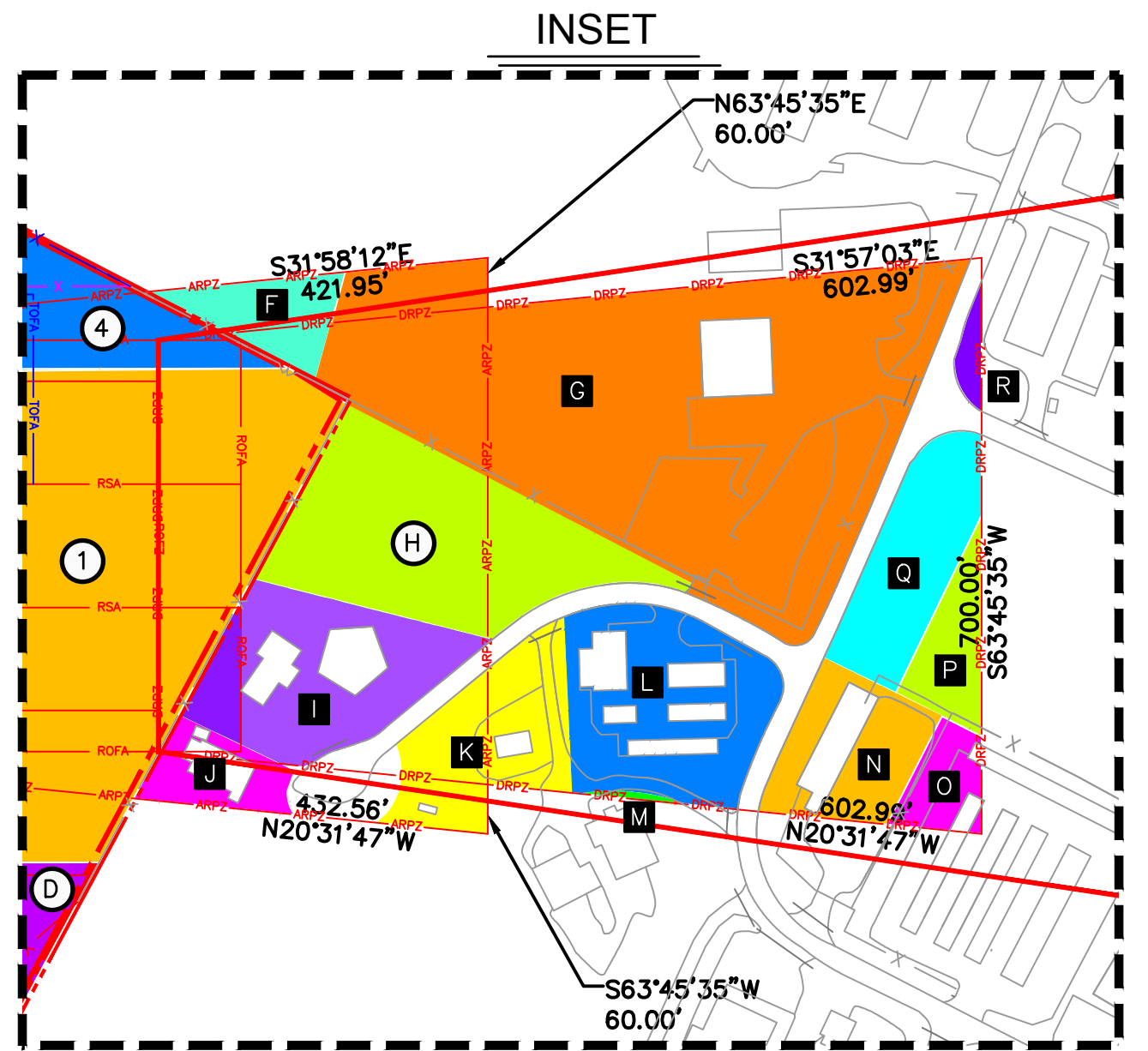
\\DEN-FS-DEN-proj\projects\23\62139-01\65CAD\Aviation\ALP\SC-AV-PM-62139-01.dwg PLOT DATE: 2020-12-2 12:15 SAVED DATE: 2020-10-29 14:50 USER: rtemplado



MAGNETIC  
 MAG. DECL.: 9° 6' E  
 RATE OF CHANGE: 0° 6' W PER YEAR  
 DATE: 2019

400 0 400  
 SCALE IN FEET

INSET  
 (SEE LEFT BELOW)



LEGEND		
DESCRIPTION	EXISTING (E)	ULTIMATE (U)
AIRFIELD DEVELOPMENT		
STRUCTURAL / FACILITIES (BUILDING)		
RUNWAY DEVELOPMENT		
PAVEMENT REMOVAL	N/A	
AIRPORT PROPERTY LINE (APL)		
RUNWAY PROTECTION ZONE (RPZ)		
RUNWAY SAFETY AREA (RSA)		
OBSTACLE FREE ZONE (OFZ)		
RUNWAY OBJECT FREE AREA (ROFA)		
BUILDING RESTRICTION LINE (BRL)		
THRESHOLD SITING SURFACE (TSS)		
APPROACH SURFACE		
BUILDING RESTRICTION LINE (BRL)		
SECURITY FENCE / WILDLIFE FENCE		
AIRCRAFT TIEDOWN		
SECTION CORNER		

EXISTING AIRPORT PROPERTY									
PARCEL	GRANTOR (SELLER)	GRANTEE (BUYER)	TYPE OF INTEREST OR EASEMENT	ACREAGE	PARCEL NUMBER	BOOK/PAGE	RECORDING DATE	FAA GRANT NO.	PURPOSE OF ACQUISITION
1		CITY OF STEAMBOAT SPRINGS	FEE	89.83	937011001	487 / 408 & 409		N/A	AERONAUTICAL
2		CITY OF STEAMBOAT SPRINGS	FEE	1.25	937011001	450 / 618		N/A	AERONAUTICAL
2B		CITY OF STEAMBOAT SPRINGS	FEE	16.37	93236302	666 / 1620 - 1627	9/27/1991	3-08-0069-08	AERONAUTICAL
2C		CITY OF STEAMBOAT SPRINGS	FEE	5.38	937011001	666 / 1620 - 1627	9/27/1991	3-08-0069-08	AERONAUTICAL
3		CITY OF STEAMBOAT SPRINGS	FEE	3.51	937011001	SBS PARCEL B		3-08-0069-08	AERONAUTICAL
4		CITY OF STEAMBOAT SPRINGS	FEE	9.01	937011001	SBS PARCEL A		3-08-0069-08	AERONAUTICAL
5A		CITY OF STEAMBOAT SPRINGS	FEE	6.98	93236302	666 / 1620 - 1627	9/27/1991	3-08-0069-08	AERONAUTICAL
6		CITY OF STEAMBOAT SPRINGS	FEE	20.76	93236302	666 / 1620 - 1627	9/27/1991	3-08-0069-08	AERONAUTICAL
7A		CITY OF STEAMBOAT SPRINGS	FEE	55.21	93236302	666 / 1620 - 1627	9/27/1991	3-08-0069-08	AERONAUTICAL
7D		CITY OF STEAMBOAT SPRINGS	FEE	9.46	937011001	666 / 1620 - 1627	9/27/1991	3-08-0069-08	AERONAUTICAL
7E		CITY OF STEAMBOAT SPRINGS	FEE	5.29	93236302	666 / 1620 , P7A		N/A	AERONAUTICAL
9		CITY OF STEAMBOAT SPRINGS	FEE	3.4	937011001	666 / 1620 - 1627	9/27/1991	3-08-0069-08	AERONAUTICAL
D		CITY OF STEAMBOAT SPRINGS	FEE	7.58	937011001	666 / 1620 - 1627	9/27/1991	3-08-0069-08	AERONAUTICAL
E		CITY OF STEAMBOAT SPRINGS	FEE	8.2	937011001	666 / 1620 - 1627	9/27/1991	3-08-0069-08	AERONAUTICAL
10		CITY OF STEAMBOAT SPRINGS	FEE	6.67	296400002		6/28/2012	N/A	AERONAUTICAL
H		CITY OF STEAMBOAT SPRINGS	FEE	3.6	172299003			N/A	AERONAUTICAL

FUTURE AIRPORT PROPERTY									
PARCEL	CURRENT OWNER (SELLER)	GRANTEE (BUYER)	TYPE OF INTEREST OR EASEMENT	ACREAGE	PARCEL NUMBER	BOOK/PAGE	RECORDING DATE	FAA GRANT NO.	PURPOSE OF ACQUISITION
F	DAWES FAMILY, LLLP	CITY OF STEAMBOAT SPRINGS	FUTURE EASEMENT	0.41	936062003				APPROACH PROTECTION
G	WASTE MANAGEMENT, INC	CITY OF STEAMBOAT SPRINGS	FUTURE EASEMENT	4.56	121200005				APPROACH PROTECTION
I	WEST ACRES THMS AT WEST ACRES PARK	CITY OF STEAMBOAT SPRINGS	FUTURE EASEMENT	1.43	187888001				APPROACH PROTECTION
J	HOLTHAUSEN, CARL F., III, GAIL BARNES HOLTHAUSEN (JT)	CITY OF STEAMBOAT SPRINGS	FUTURE EASEMENT	0.73	172200008				APPROACH PROTECTION
K	CLOW, RONAL B. & ROBIN D. PEACK	CITY OF STEAMBOAT SPRINGS	FUTURE EASEMENT	0.6	172200007				APPROACH PROTECTION
L	KCF, LTD	CITY OF STEAMBOAT SPRINGS	FUTURE EASEMENT	0.8	172200006				APPROACH PROTECTION
M	RRJLC INVESTMENTS, LLC	CITY OF STEAMBOAT SPRINGS	FUTURE EASEMENT	0.1	172200005				APPROACH PROTECTION
N	S&K DOWNHILL, LLC	CITY OF STEAMBOAT SPRINGS	FUTURE EASEMENT	0.43	172100001				APPROACH PROTECTION
O	AIMZ STORAGE, LLC	CITY OF STEAMBOAT SPRINGS	FUTURE EASEMENT	0.01	172100002				APPROACH PROTECTION
P	JACOB CIRCLE STORAGE, LLC	CITY OF STEAMBOAT SPRINGS	FUTURE EASEMENT	0.24	121300022				APPROACH PROTECTION
Q	ELK RIVER ROAD BUSINESS PARK PARTNERSHIP	CITY OF STEAMBOAT SPRINGS	FUTURE EASEMENT	0.56	121299001				APPROACH PROTECTION
R	E Z STORAGE OF STEAMBOAT, LLS	CITY OF STEAMBOAT SPRINGS	FUTURE EASEMENT	0.01	121200011				APPROACH PROTECTION

REV	DATE	DESCRIPTION	BY

SHEET INFO	DESIGNED	DRAWN	CHECKED	APPROVED	LAST EDIT	PLOT DATE
KN	RT	JH, LW	KN	10/29/20	12/2/20	

STEAMBOAT SPRINGS AIRPORT  
 STEAMBOAT SPRINGS, COLORADO  
 AIRPORT LAYOUT PLAN  
 EXHIBIT "A" AIRPORT PROPERTY  
 INVENTORY MAPS

PROJECT	62139.01
DATE	12/2/20

© DOWL 2020  
 SHEET 10  
 of 10