

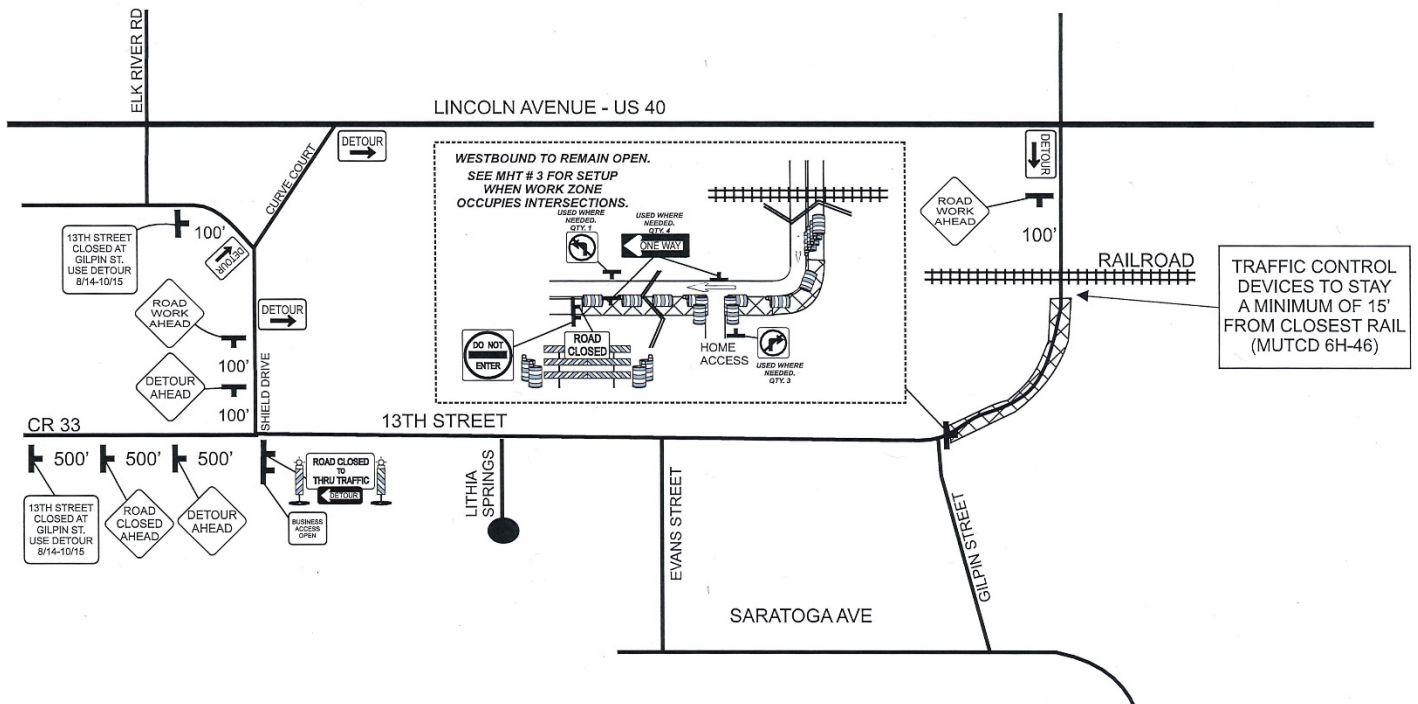


13th Street Project Narrows to One-Lane Traffic

Eastbound Lane to Close for Approximately One Month

STEAMBOAT SPRINGS, COLORADO-August 21, 2019-The eastbound lane of 13th Street will close to motorists starting as early as Monday, August 26, as crews dig into drainage and sidewalk work between the railroad tracks and Gilpin Street. The Gilpin Street intersection will remain open during the one-lane closure.

Eastbound travelers will be required to detour west on 13th Street to the James Brown Bridge and to US40 during this phase of the project. The closure will run 24 hours a day, 7 days a week for about a month. The westbound lane will remain open and provisions will be made for pedestrian access.



The one-lane directional closure ensures ample room for efficient work area as well as safety buffers for crews. Lower speed limits will be in effect and motorists are asked to slow down while traveling through the construction zone and follow all traffic control instructions.

The 13th Street Project consists of construction of approximately 1,100 lineal feet of eight-foot sidewalk, 1,100 lineal feet of storm sewer pipe, roadway widening, intersection improvements, asphalt paving and patching and signing and striping along 13th St, which crosses the Union Pacific Railroad right-of-way.

-WeServeTheCity-

Contact

Mike Beurskens, Civil Engineer, 970.871.8273 or [email](#)

Ben Beall, City Engineer, 970.871.8293 or [email](#)