



June 2017 Taxes, Remitted in July 2017 Sales, Use, and Accommodation Tax Report

This City of Steamboat Springs Sales, Use, and Accommodation Tax Report examines tax collections for the month of June 2017, which were remitted to the City in July 2017.

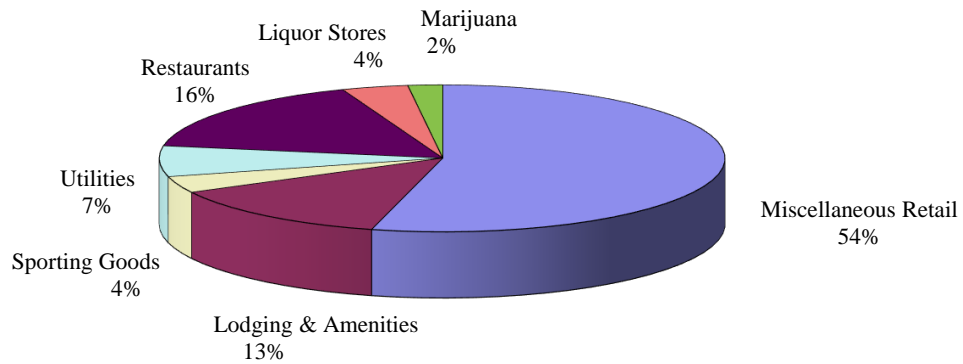
Sales Tax

June 2017 sales tax collections increased by 3.35% compared to June 2016.
Year-to-date total sales tax collections are 3.68% higher than those of 2016 year-to-date.

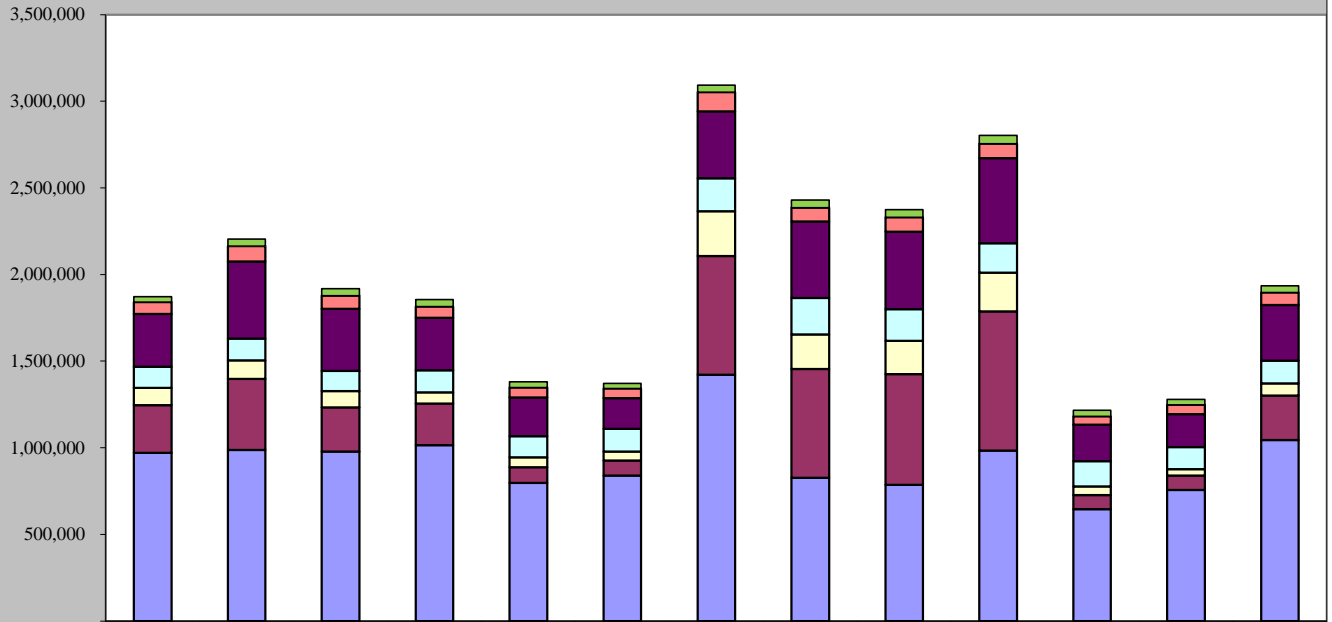
Sales Tax June 2017	Sales Tax June 2016	% increase/decrease over last June
\$1,934,867	\$1,872,237	3.35%

Sales Tax 2017 YTD	Sales Tax 2016 YTD	% increase/decrease over prior Year to Date
\$12,036,647	\$11,609,915	3.68%

June 2017 Sales Categories



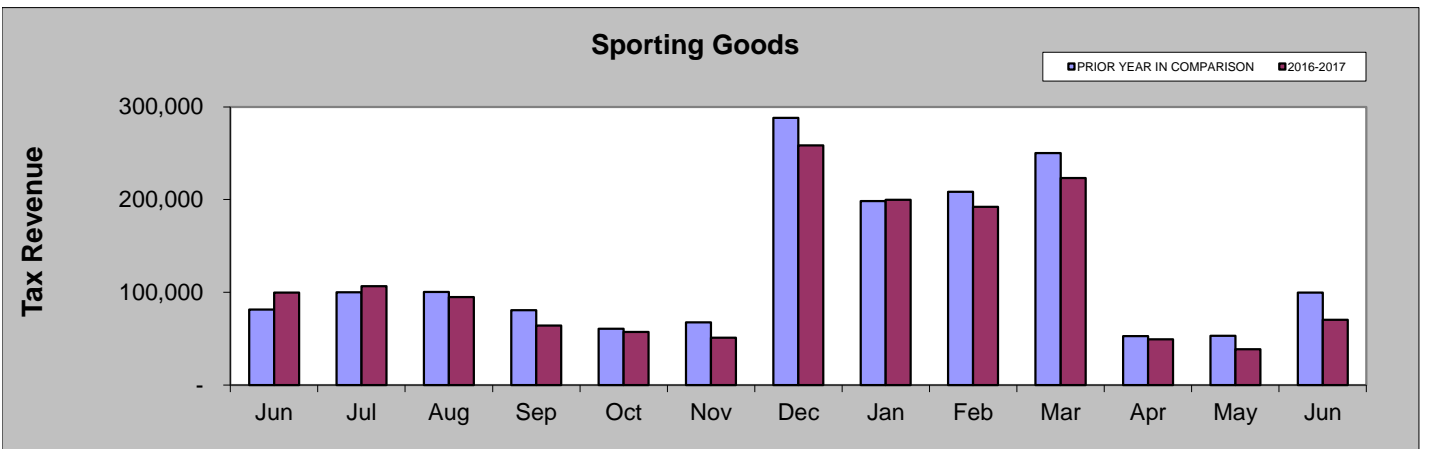
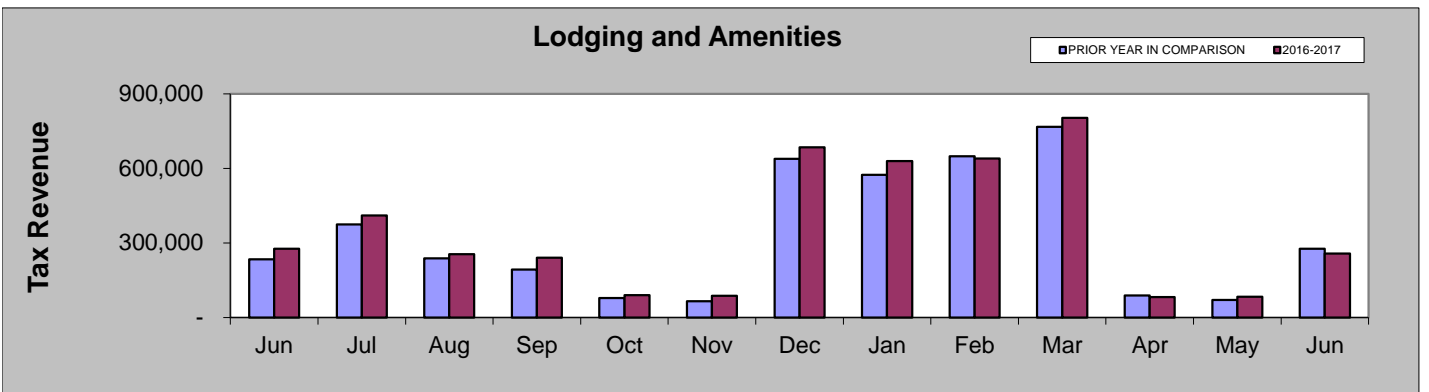
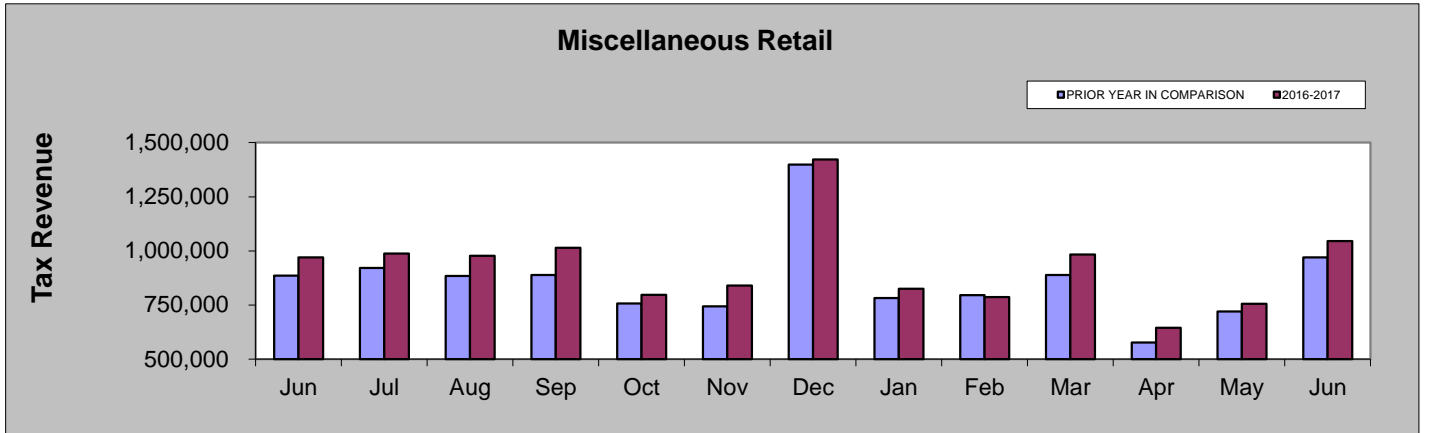
June 2016 - June 2017

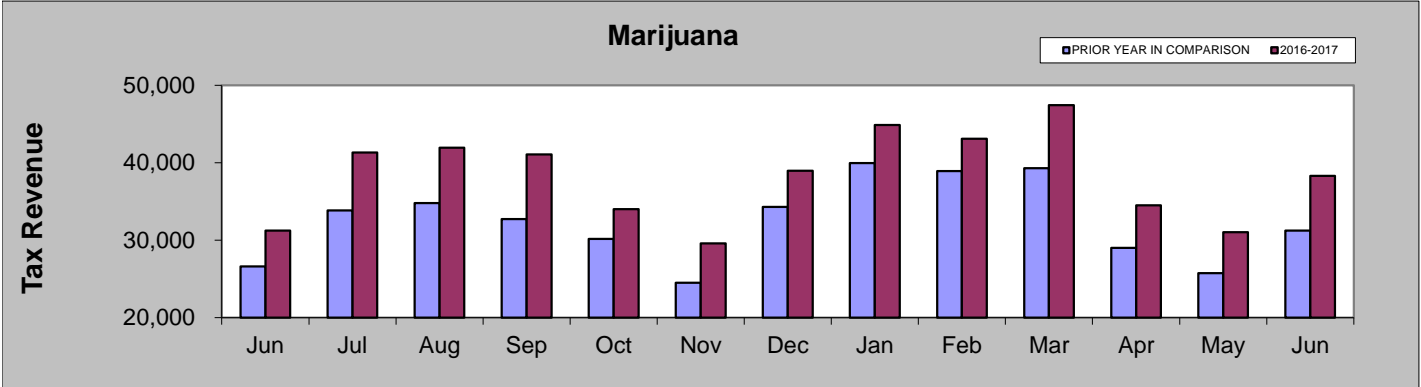
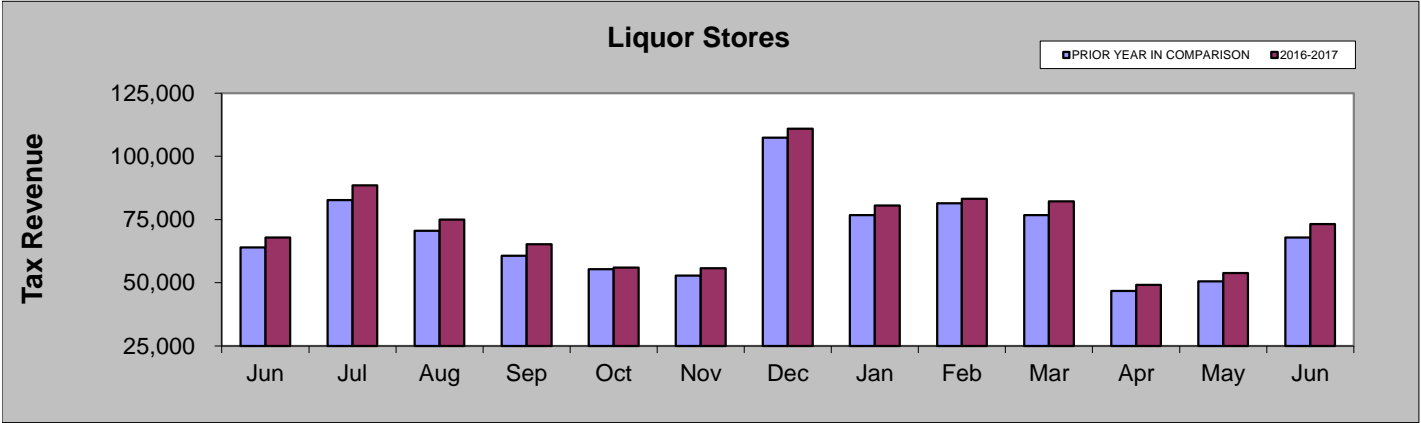
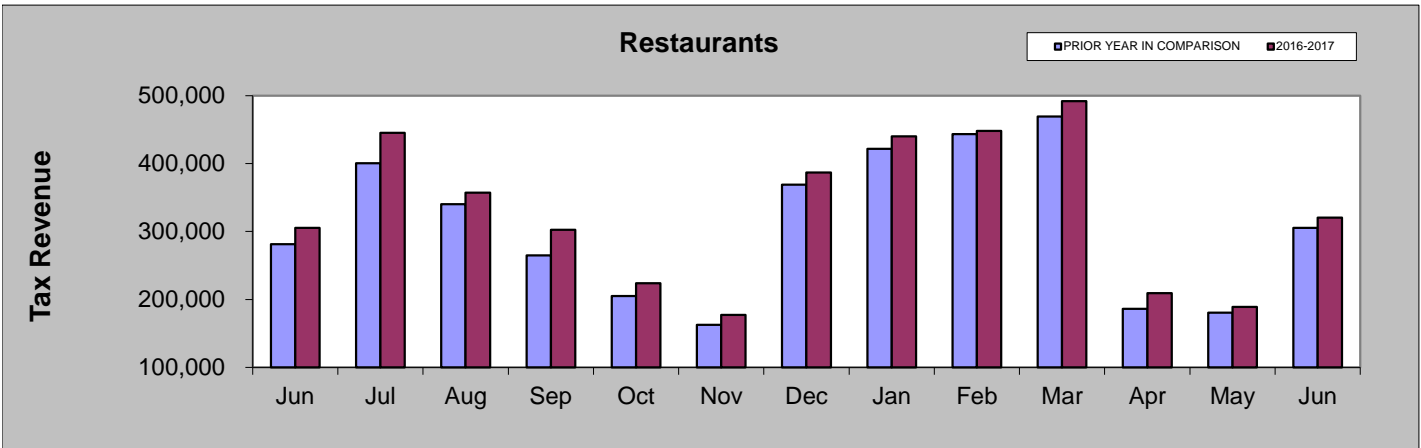
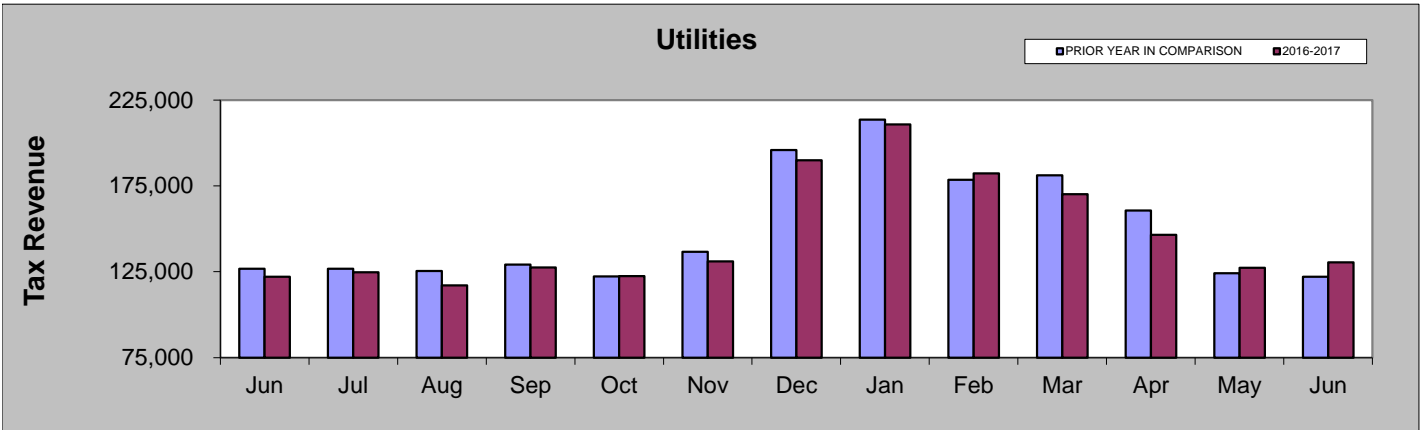


	Jun-16	Jul-16	Aug-16	Sep-16	Oct-16	Nov-16	Dec-16	Jan-17	Feb-17	Mar-17	Apr-17	May-17	Jun-17
Marijuana	31,236	41,330	41,945	41,094	34,015	29,593	38,972	44,878	43,110	47,454	34,510	31,021	38,304
Liquor Stores	67,857	88,604	75,025	65,278	56,043	55,694	110,973	80,551	83,172	82,179	49,185	53,847	73,163
Restaurants	305,358	445,376	357,261	302,787	223,958	177,501	386,864	440,284	448,064	492,052	209,543	189,203	320,628
Utilities	122,044	124,627	117,128	127,444	122,420	130,988	190,033	210,900	182,268	170,116	146,540	127,318	130,579
Sporting Goods	99,742	106,595	94,929	64,172	57,190	50,816	258,385	199,765	192,059	223,242	49,228	38,431	70,286
Lodging & Amenities	276,018	410,342	254,247	239,996	89,699	86,915	684,784	628,488	639,285	803,324	81,696	83,054	256,518
Miscellaneous Retail	969,982	987,732	978,104	1,014,904	797,564	839,839	1,422,014	825,841	786,050	983,929	645,303	755,890	1,045,389

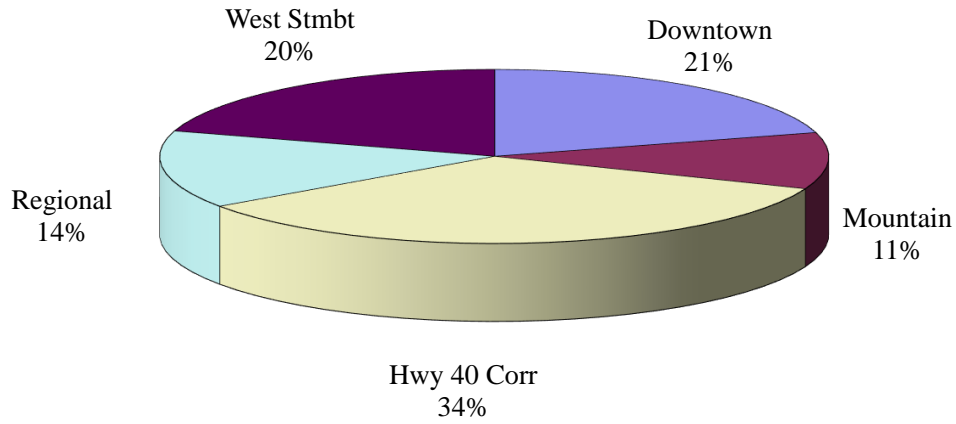
JUNE COMPARISON BY CATEGORY

	2017	2016	% change
Miscellaneous Retail	\$1,045,389	\$969,982	7.77%
Lodging and Amenities	\$256,518	\$276,018	-7.06%
Sporting Goods	\$70,286	\$99,742	-29.53%
Utilities	\$130,579	\$122,044	6.99%
Restaurants	\$320,628	\$305,358	5.00%
Liquor Stores	\$73,163	\$67,857	7.82%
Marijuana	\$38,304	\$31,236	22.63%

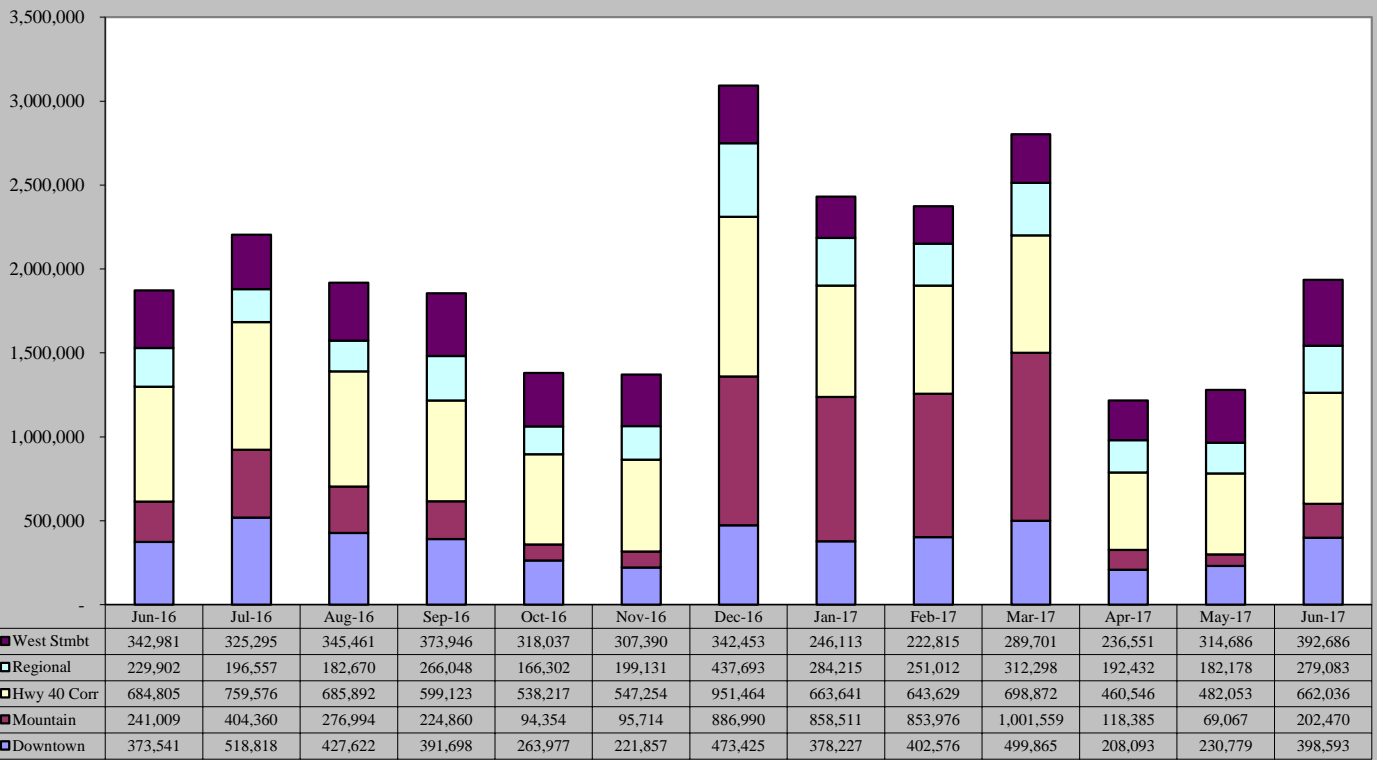




June 2017 Sales Tax By Area

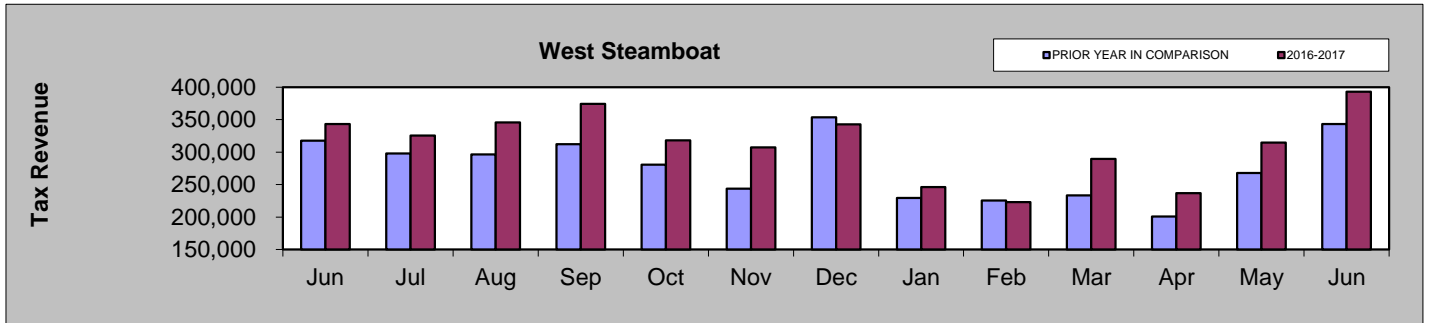
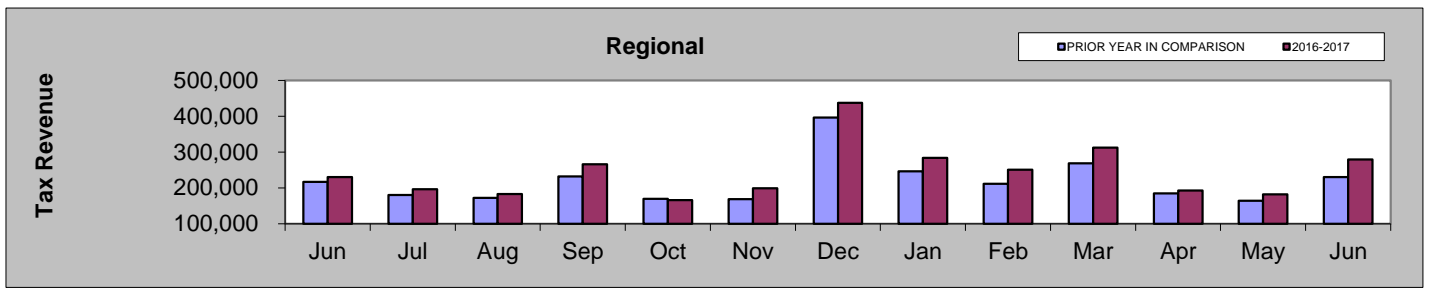
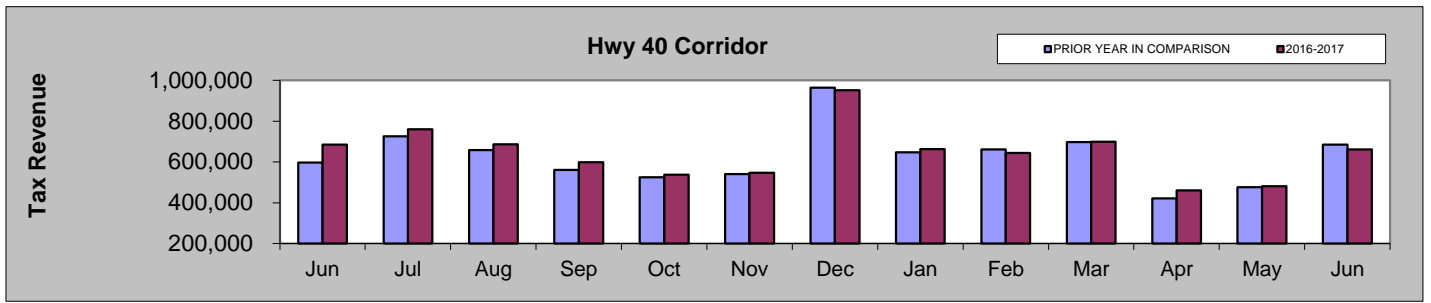
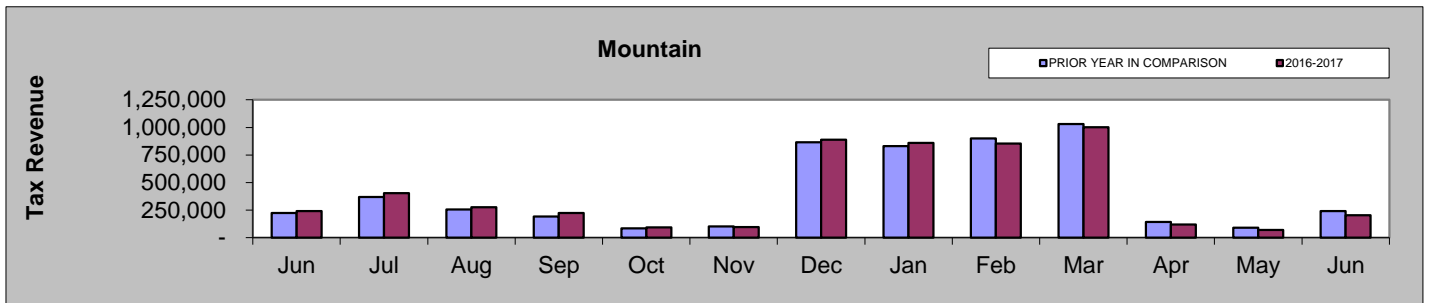
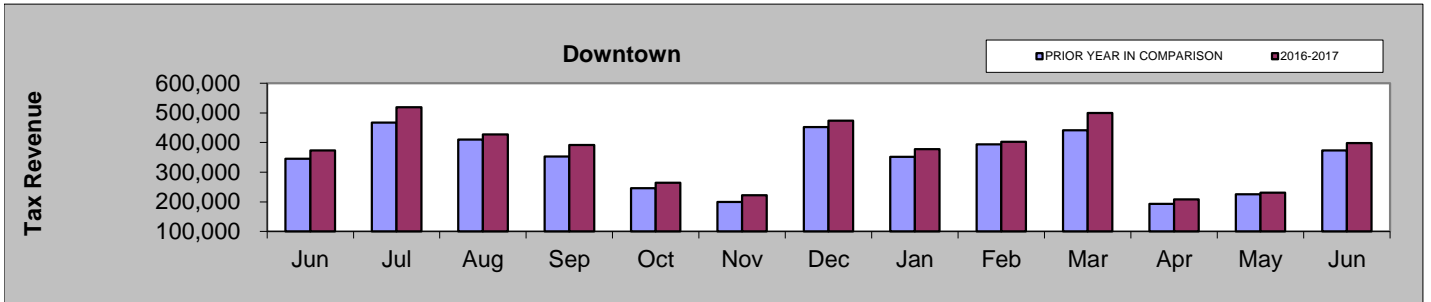


June 2016 - June 2017



JUNE COMPARISON BY AREA

Area	2017	2016	% change
Downtown	\$398,593	\$373,541	6.71%
Mountain	\$202,470	\$241,009	-15.99%
Hwy 40 Corridor	\$662,036	\$684,805	-3.32%
Regional	\$279,083	\$229,902	21.39%
West Steamboat	\$392,686	\$342,981	14.49%



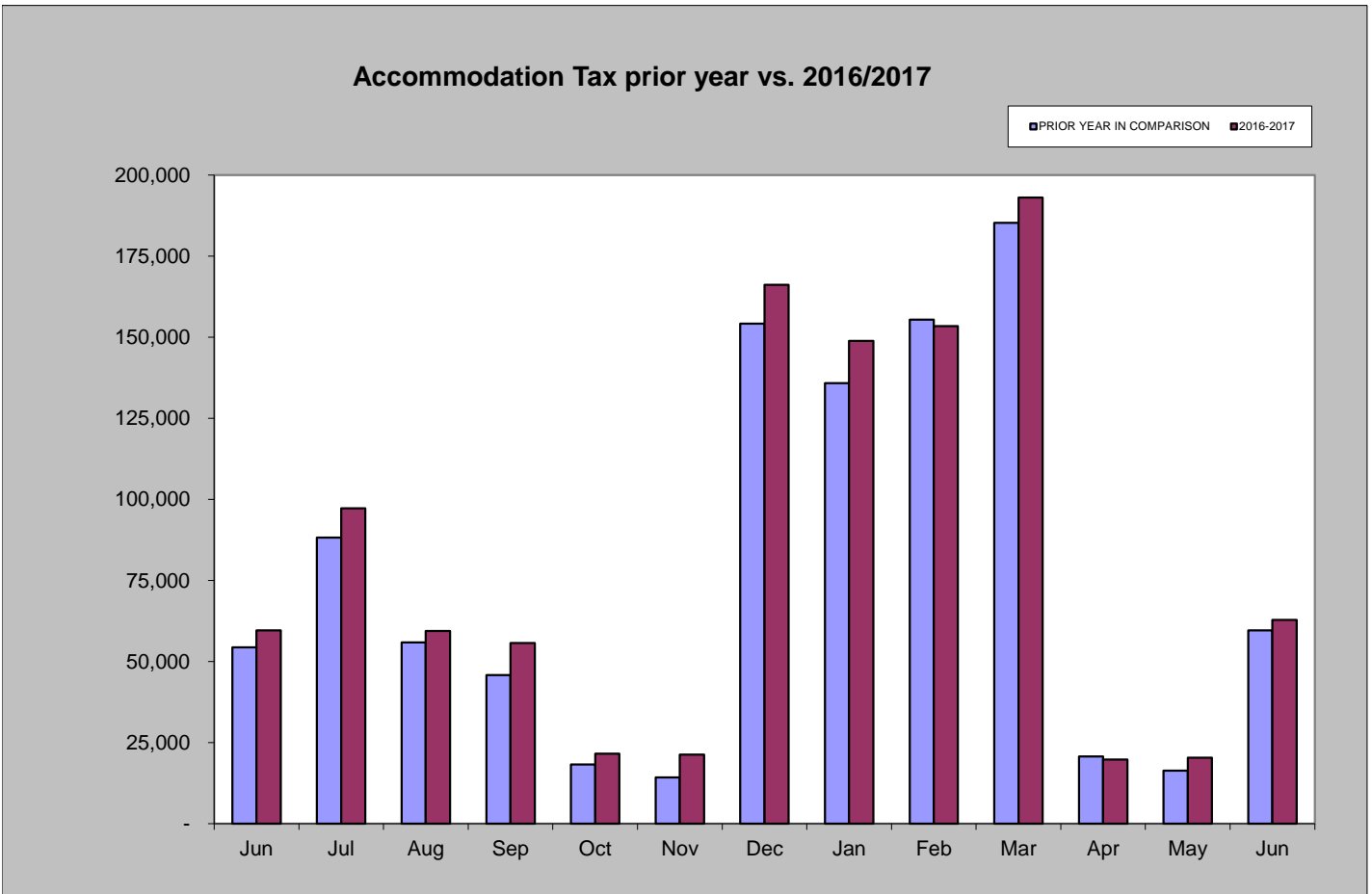
Accommodation Tax

June 2017 accommodation tax collections increased by 5.31% compared to June 2016.

Year-to-date accommodation tax collections are 4.32% higher than those of 2016 year-to-date.

Accommodation Tax June 2017	Accommodation Tax June 2016	% increase/decrease over last June
\$62,775	\$59,612	5.31%

Accommodation Tax 2017 YTD	Accommodation Tax 2016 YTD	% increase/decrease over prior Year to Date
\$598,027	\$573,235	4.32%



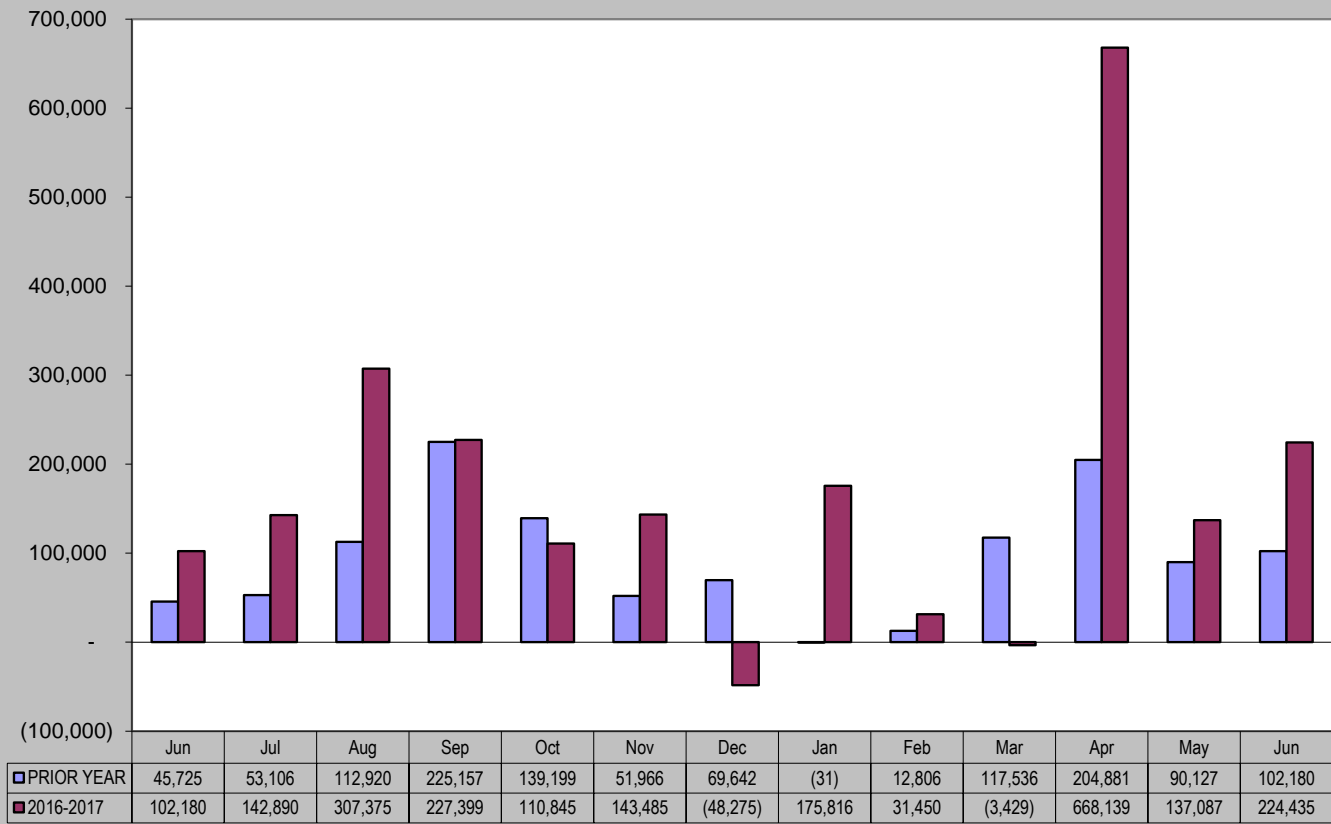
Building Use Tax

June 2017 building use tax collections increased by 120% compared to June 2016.
 Year-to-date building use tax collections are 134% higher than those of 2016 year-to-date.

Building Use Tax June 2017	Building Use Tax June 2016	% increase/decrease over last June
\$224,435	\$102,180	120%

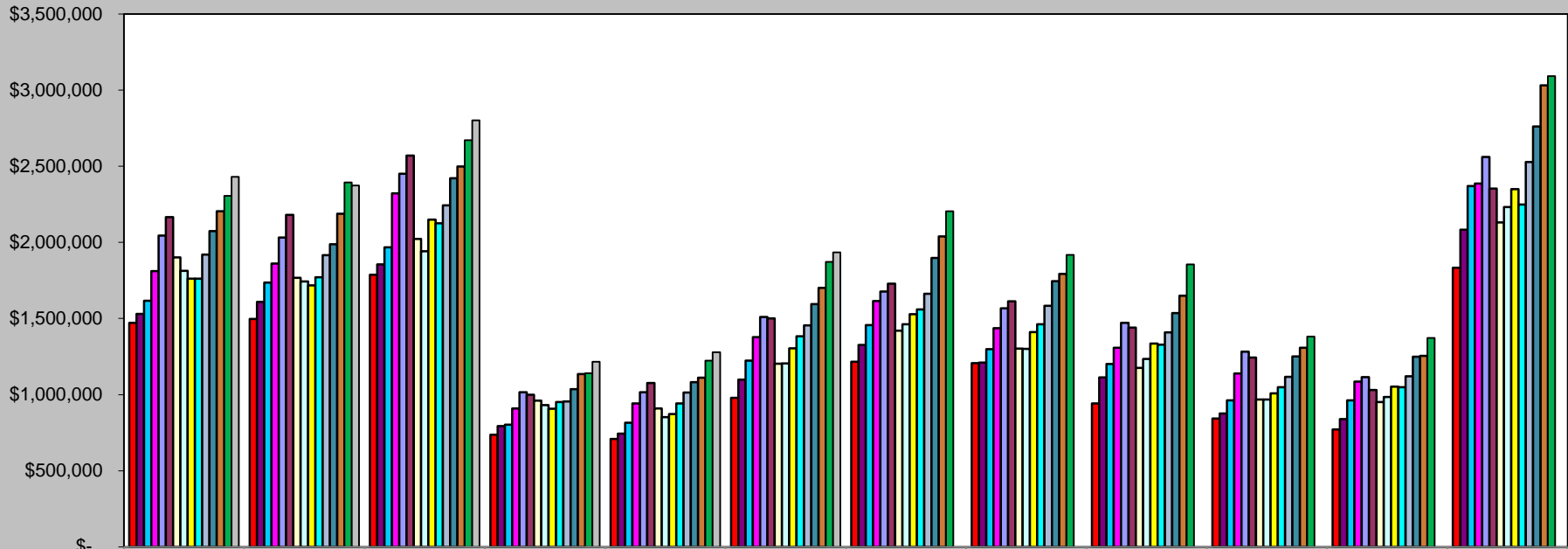
Building Use Tax 2017 YTD	Building Use Tax 2016 YTD	% increase/decrease over prior Year to Date
\$1,233,499	\$527,499	134%

Building Use Tax - prior year vs. 2016/2017



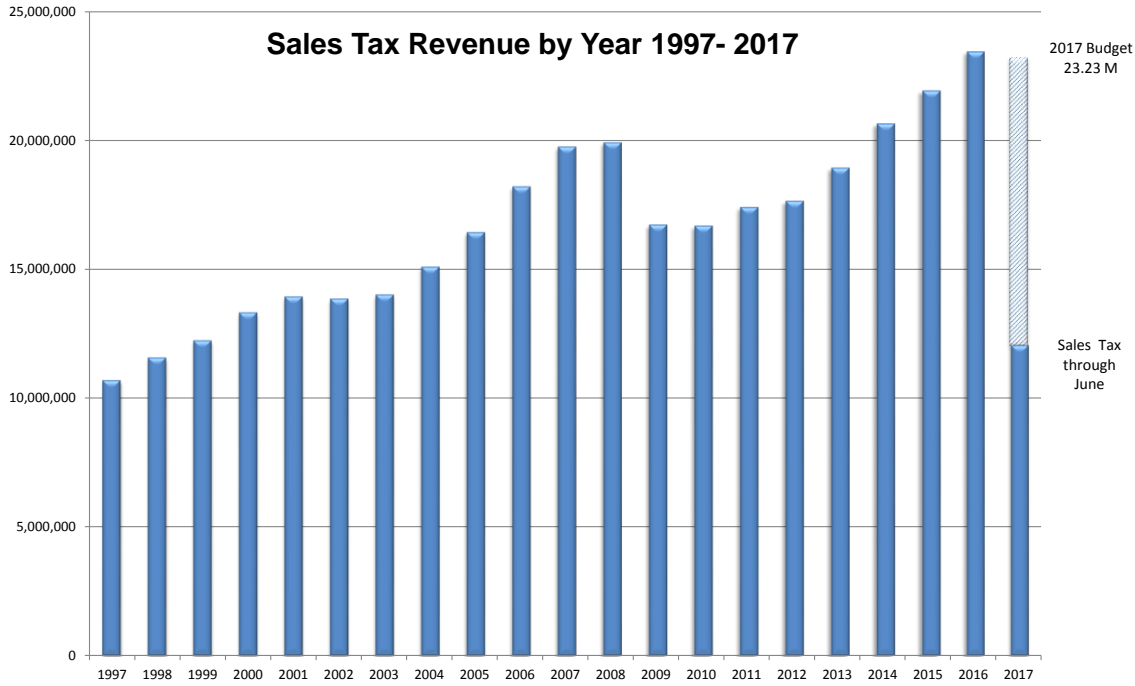
Historical Sales Tax Data

Sales Tax Totals - 2003 to 2017



	January	February	March	April	May	June	July	August	September	October	November	December
■ 2003	\$1,471,061	1,497,398	1,787,877	737,255	708,947	979,861	1,215,159	1,207,373	942,596	842,980	770,632	1,833,614
■ 2004	\$1,530,388	1,609,507	1,855,895	793,619	744,456	1,097,619	1,325,813	1,209,657	1,112,747	875,854	839,590	2,083,871
■ 2005	\$1,617,152	1,735,422	1,968,239	803,359	815,925	1,223,263	1,457,514	1,299,302	1,201,406	962,731	961,551	2,369,566
■ 2006	\$1,811,413	1,861,558	2,322,443	908,584	941,595	1,377,269	1,614,695	1,436,115	1,307,845	1,139,648	1,084,858	2,386,275
■ 2007	\$2,044,667	2,032,045	2,450,620	1,016,601	1,015,101	1,510,706	1,676,821	1,567,534	1,470,714	1,281,546	1,115,446	2,561,705
■ 2008	\$2,166,093	2,180,532	2,570,347	999,144	1,077,244	1,500,946	1,728,329	1,612,531	1,440,373	1,244,023	1,030,654	2,354,077
■ 2009	\$1,900,660	1,767,622	2,022,205	960,333	908,729	1,203,304	1,419,472	1,301,838	1,176,374	967,698	951,706	2,130,350
■ 2010	\$1,813,155	1,743,152	1,942,237	931,573	853,085	1,204,077	1,462,648	1,300,401	1,235,126	967,688	984,189	2,232,403
■ 2011	\$1,761,158	1,716,963	2,150,278	907,893	872,240	1,304,067	1,528,476	1,411,387	1,335,629	1,008,207	1,052,340	2,349,674
■ 2012	\$1,761,959	1,770,126	2,125,388	951,540	941,877	1,383,426	1,559,801	1,461,392	1,328,744	1,048,827	1,049,425	2,249,514
■ 2013	\$1,919,887	1,916,581	2,242,412	955,334	1,013,860	1,454,259	1,662,137	1,584,036	1,408,659	1,117,302	1,120,256	2,528,232
■ 2014	\$2,073,559	1,988,146	2,421,883	1,035,139	1,082,596	1,595,084	1,896,956	1,745,617	1,535,341	1,250,229	1,249,980	2,761,147
■ 2015	\$2,204,914	2,188,460	2,498,079	1,134,521	1,111,391	1,700,528	2,040,035	1,793,173	1,649,280	1,308,089	1,254,026	3,031,859
■ 2016	\$2,306,434	2,393,851	2,671,877	1,141,424	1,224,092	1,872,237	2,204,605	1,918,639	1,855,675	1,380,888	1,371,347	3,092,025
■ 2017	\$2,430,707	2,374,009	2,802,295	1,216,006	1,278,764	1,934,867						

Sales Tax Revenue by Year 1997- 2017



Totals by Year	
1997	\$ 10,672,320
1998	\$ 11,559,068
1999	\$ 12,218,807
2000	\$ 13,304,983
2001	\$ 13,921,749
2002	\$ 13,841,283
2003	\$ 13,994,753
2004	\$ 15,079,016
2005	\$ 16,415,430
2006	\$ 18,192,298
2007	\$ 19,743,507
2008	\$ 19,904,293
2009	\$ 16,710,291
2010	\$ 16,669,735
2011	\$ 17,398,312
2012	\$ 17,632,019
2013	\$ 18,922,955
2014	\$ 20,635,678
2015	\$ 21,914,358
2016	\$ 23,433,093
* 2017	\$ 12,036,647

* 2017 total is year-to-date through June