

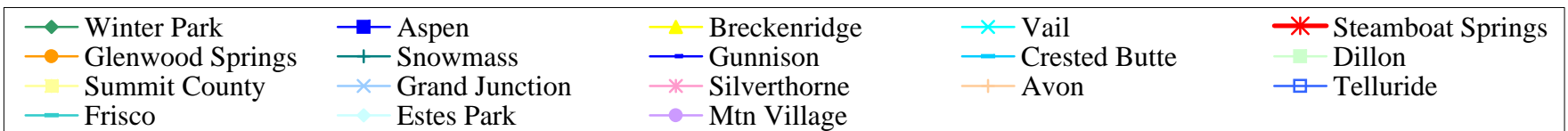
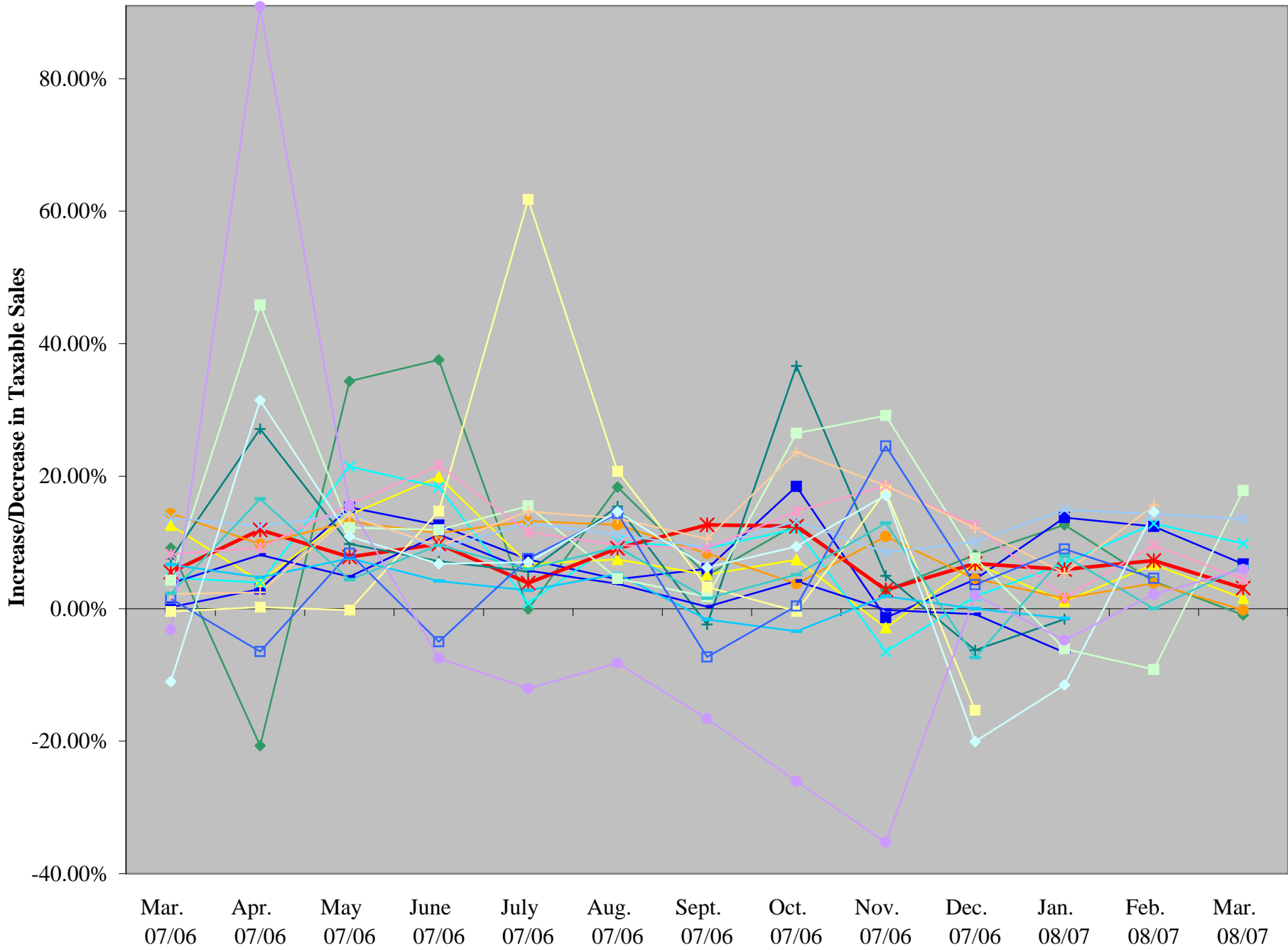
CAST - Colorado Association of Ski Towns
Taxable Sales (based on Sales/Use tax collected)
2007/2006 to 2008/2007

	Mar. 2007/2006	Apr. 2007/2006	May 2007/2006	June 2007/2006	July 2007/2006	Aug. 2007/2006	Sept. 2007/2006	Oct. 2007/2006	Nov. 2007/2006	Dec. 2007/2006	Jan. 2008/2007	Feb. 2008/2007	Mar. 2008/2007
Sales - Winter Park (5%)	\$ 17,526,960	\$ 5,105,520	\$ 2,275,040	\$ 5,203,660	\$ 5,462,080	\$ 5,343,380	\$ 4,773,960	\$ 2,921,900	\$ 4,326,440	\$ 14,267,820	\$ 12,822,940	\$ 12,421,840	\$ 17,360,140
	\$ 16,055,700	\$ 6,437,480	\$ 1,693,720	\$ 3,782,960	\$ 5,465,540	\$ 4,514,720	\$ 4,544,800	\$ 2,591,880	\$ 4,208,820	\$ 13,195,840	\$ 11,382,580	\$ 11,931,640	\$ 17,526,960
<i>Winter Park % Inc(Dec) in sales</i>	9.16%	-20.69%	34.32%	37.56%	-0.06%	18.35%	5.04%	12.73%	2.79%	8.12%	12.65%	4.11%	-0.95%
Year-to-date:													4.32%
Sales - Aspen (2.2%)	\$ 62,973,182	\$ 22,596,455	\$ 17,069,545	\$ 39,155,864	\$ 52,094,818	\$ 46,806,682	\$ 35,917,000	\$ 22,714,182	\$ 21,217,500	\$ 76,078,773	\$ 65,846,455	\$ 61,818,227	\$ 67,212,773
	\$ 62,842,636	\$ 21,945,591	\$ 14,805,182	\$ 34,768,409	\$ 48,489,727	\$ 44,807,500	\$ 33,873,045	\$ 19,176,955	\$ 21,507,364	\$ 72,872,818	\$ 57,896,045	\$ 54,994,227	\$ 62,973,182
<i>Aspen % Inc(Dec) in sales</i>	0.21%	2.97%	15.29%	12.62%	7.43%	4.46%	6.03%	18.45%	-1.35%	4.40%	13.73%	12.41%	6.73%
Year-to-date:													10.81%
Sales - Breckenridge (2.5%)	\$ 57,028,578	\$ 23,929,804	\$ 12,210,151	\$ 20,582,804	\$ 25,770,664	\$ 23,651,510	\$ 21,219,796	\$ 14,644,972	\$ 17,878,532	\$ 50,642,289	\$ 45,077,293	\$ 46,738,166	\$ 57,926,635
	\$ 50,664,330	\$ 22,986,818	\$ 10,696,830	\$ 17,160,970	\$ 24,139,228	\$ 22,017,921	\$ 20,186,131	\$ 13,635,497	\$ 18,403,648	\$ 47,408,091	\$ 44,599,942	\$ 43,814,052	\$ 57,028,578
<i>Breckenridge % Inc(Dec) in sales</i>	12.56%	4.10%	14.15%	19.94%	6.76%	7.42%	5.12%	7.40%	-2.85%	6.82%	1.07%	6.67%	1.57%
Year-to-date:													2.96%
Sales - Steamboat Springs (4%)	\$ 61,248,425	\$ 25,415,025	\$ 25,377,525	\$ 37,789,375	\$ 41,922,275	\$ 39,171,450	\$ 36,827,125	\$ 32,040,500	\$ 27,885,550	\$ 63,574,175	\$ 54,148,425	\$ 54,485,350	\$ 63,148,875
	\$ 58,057,025	\$ 22,714,600	\$ 23,539,875	\$ 34,431,725	\$ 40,367,675	\$ 35,902,875	\$ 32,696,125	\$ 28,491,200	\$ 27,121,450	\$ 59,517,200	\$ 51,116,525	\$ 50,800,850	\$ 61,248,425
<i>Steamboat % Inc(Dec) in sales</i>	5.50%	11.89%	7.81%	9.75%	3.85%	9.10%	12.63%	12.46%	2.82%	6.82%	5.93%	7.25%	3.10%
Year-to-date:													5.28%
Sales - Vail (4%)	\$ 74,661,150	\$ 33,268,500	\$ 13,644,600	\$ 23,825,425	\$ 31,644,525	\$ 29,068,650	\$ 22,707,950	\$ 17,212,975	\$ 18,696,925	\$ 70,546,775	\$ 74,340,525	\$ 76,704,050	\$ 82,005,150
	\$ 71,323,850	\$ 32,008,100	\$ 11,232,075	\$ 20,134,050	\$ 31,381,075	\$ 26,390,350	\$ 20,813,725	\$ 15,359,900	\$ 19,989,550	\$ 69,281,450	\$ 69,582,650	\$ 67,966,075	\$ 74,661,150
<i>Vail % Inc(Dec) in sales</i>	4.68%	3.94%	21.48%	18.33%	0.84%	10.15%	9.10%	12.06%	-6.47%	1.83%	6.84%	12.86%	9.84%
Year-to-date:													9.82%
Sales - Glenwood (3.7%)	\$ 36,202,757	\$ 31,248,459	\$ 35,452,973	\$ 43,269,351	\$ 39,746,378	\$ 39,902,108	\$ 41,660,703	\$ 34,269,162	\$ 35,014,811	\$ 48,455,973	\$ 31,520,324	\$ 30,483,703	\$ 36,116,541
	\$ 31,654,811	\$ 28,472,108	\$ 31,339,108	\$ 38,833,973	\$ 35,099,108	\$ 35,424,351	\$ 38,463,676	\$ 33,031,919	\$ 31,577,324	\$ 46,365,405	\$ 31,031,595	\$ 29,362,541	\$ 36,202,757
<i>Glenwood % Inc(Dec) in sales</i>	14.37%	9.75%	13.13%	11.42%	13.24%	12.64%	8.31%	3.75%	10.89%	4.51%	1.57%	3.82%	-0.24%
Year-to-date:													1.58%
Sales - Snowmass (1%)	\$ 26,619,686	\$ 6,834,485	\$ 2,333,115	\$ 5,351,715	\$ 7,267,287	\$ 7,804,971	\$ 5,519,200	\$ 3,551,228	\$ 3,997,945	\$ 19,078,886	\$ 24,342,543	\$ 24,342,543	\$ 26,619,686
	\$ 24,751,372	\$ 5,375,715	\$ 2,125,486	\$ 4,995,057	\$ 6,880,972	\$ 6,762,571	\$ 5,654,914	\$ 2,598,743	\$ 3,809,171	\$ 20,354,258	\$ 24,739,257	\$ 24,739,257	\$ 24,751,372
<i>Snowmass % Inc(Dec) in sales</i>	7.55%	27.14%	9.77%	7.14%	5.61%	15.41%	-2.40%	36.65%	4.96%	-6.27%	-1.60%		
Sales - Gunnison (3%)	\$ 8,923,433	\$ 8,189,000	\$ 9,345,900	\$ 11,834,667	\$ 13,152,533	\$ 12,867,200	\$ 11,976,400	\$ 9,898,367	\$ 8,387,267	\$ 11,847,967	\$ 8,545,667	\$ 8,545,667	\$ 8,923,433
	\$ 8,595,033	\$ 7,574,167	\$ 8,916,467	\$ 10,643,700	\$ 12,437,100	\$ 12,401,800	\$ 11,942,533	\$ 9,502,300	\$ 8,401,867	\$ 11,949,967	\$ 9,149,600	\$ 9,149,600	\$ 8,923,433
<i>Gunnison % Inc(Dec) in sales</i>	3.82%	8.12%	4.82%	11.19%	5.75%	3.75%	0.28%	4.17%	-0.17%	-0.85%	-6.60%		
Sales - Crested Butte (4%)	\$ 5,488,250	\$ 2,305,925	\$ 2,685,875	\$ 4,799,925	\$ 7,395,125	\$ 6,491,325	\$ 5,056,400	\$ 2,785,550	\$ 2,851,075	\$ 5,669,475	\$ 4,305,700	\$ 4,305,700	\$ 5,488,250
	\$ 5,147,050	\$ 2,201,775	\$ 2,495,925	\$ 4,608,375	\$ 7,197,025	\$ 6,168,000	\$ 5,139,975	\$ 2,884,175	\$ 2,798,950	\$ 5,669,550	\$ 4,369,400	\$ 4,369,400	\$ 5,147,050
<i>Crested Butte % Inc(Dec) in sales</i>	6.63%	4.73%	7.61%	4.16%	2.75%	5.24%	-1.63%	-3.42%	1.86%	0.00%	-1.46%		
Sales - Dillon (2%)	\$ 21,513,700	\$ 17,126,600	\$ 10,616,350	\$ 14,103,650	\$ 18,436,050	\$ 15,942,900	\$ 14,695,100	\$ 13,882,200	\$ 13,921,450	\$ 31,062,300	\$ 19,242,650	\$ 17,054,400	\$ 25,345,900
	\$ 20,625,600	\$ 11,742,800	\$ 9,458,050	\$ 12,605,350	\$ 15,962,150	\$ 15,247,500	\$ 14,433,600	\$ 10,976,550	\$ 10,779,900	\$ 28,859,750	\$ 20,485,800	\$ 18,778,200	\$ 21,513,700
<i>Dillon % Inc(Dec) in sales</i>	4.31%	45.83%	12.25%	11.88%	15.50%	4.56%	1.81%	26.77%	29.14%	7.63%	-6.07%	-9.18%	17.81%
Year-to-date:													1.42%
Sales - Summit County (2%)	\$ 40,577,950	\$ 15,178,550	\$ 7,359,350	\$ 13,729,700	\$ 15,363,450	\$ 18,969,450	\$ 13,068,750	\$ 10,190,250	\$ 14,837,300	\$ 33,327,350	\$ 40,751,000	\$ 15,142,650	\$ 15,142,650
	\$ 40,751,000	\$ 15,142,650	\$ 7,377,000	\$ 13,729,700	\$ 15,363,450	\$ 18,969,450	\$ 13,068,750	\$ 10,232,250	\$ 12,603,150	\$ 39,352,650	\$ 40,577,950	\$ 15,178,550	\$ 15,178,550
<i>Summit County % Inc(Dec) in sale</i>	-0.42%	0.24%	-0.24%	14.74%	61.78%	20.79%	3.28%	-0.41%	17.73%	-15.31%			
Sales - Grand Junction (2%)	\$ 129,959,636	\$ 173,328,036	\$ 148,153,382	\$ 151,393,309	\$ 191,667,309	\$ 161,538,727	\$ 162,717,527	\$ 192,482,545	\$ 158,287,236	\$ 159,789,164	\$ 239,470,255	\$ 163,419,382	\$ 147,573,964
	\$ 114,296,873	\$ 154,118,909	\$ 129,674,327	\$ 138,841,491	\$ 169,793,600	\$ 145,324,545	\$ 148,916,982	\$ 170,062,327	\$ 145,893,418	\$ 145,176,873	\$ 208,332,727	\$ 142,974,764	\$ 129,959,636
<i>Grand Junction % Inc(Dec) in sale</i>	13.70%	12.46%	14.25%	9.04%	12.88%	11.16%	9.27%	13.18%	8.50%	10.07%	14.95%	14.30%	13.55%
Year-to-date:													14.38%
Sales - Silverthorne (2%)	\$ 23,433,750	\$ 15,100,200	\$ 14,301,950	\$ 22,321,100	\$ 20,437,450	\$ 20,090,050	\$ 20,668,050	\$ 16,702,350	\$ 18,514,900	\$ 26,832,900	\$ 17,590,050	\$ 18,084,900	\$ 24,470,550
	\$ 21,652,500	\$ 13,825,000	\$ 12,361,800	\$ 18,348,800	\$ 18,322,600	\$ 18,333,300	\$ 18,937,450	\$ 14,563,400	\$ 15,616,400	\$ 23,835,700	\$ 17,305,000	\$ 16,499,800	\$ 23,433,750
<i>Silverthorne % Inc(Dec) in sales</i>	8.23%	9.22%	15.69%	21.65%	11.54%	9.58%	9.14%	14.69%	18.56%	12.57%	1.65%	9.61%	4.42%
Year-to-date:													5.08%
Sales - Avon (4%)	\$ 14,310,692	\$ 8,948,734	\$ 7,704,156	\$ 10,298,150	\$ 11,401,692	\$ 10,614,586	\$ 10,540,182	\$ 9,199,127	\$ 9,058,847	\$ 21,708,334	\$ 13,824,533	\$ 14,357,530	\$ 14,310,692
	\$ 14,002,874	\$ 8,734,276	\$ 6,759,228	\$ 9,409,901	\$ 9,943,776	\$ 9,339,065	\$ 9,535,270	\$ 7,441,020	\$ 7,638,373	\$ 19,352,838	\$ 13,120,510	\$ 12,425,313	\$ 14,002,874
<i>Avon % Inc(Dec) in sales</i>	2.20%	2.46%	13.98%	9.44%	14.66%	13.66%	10.54%	23.63%	18.60%	12.17%	5.37%	15.55%	
Sales - Telluride (4.5%)	\$ 11,885,469	\$ 3,437,956	\$ 4,362,013	\$ 9,207,756	\$ 9,970,142	\$ 9,245,594	\$ 8,914,364	\$ 4,595,606	\$ 4,652,947	\$ 12,448,910	\$ 10,952,771	\$ 10,777,407	\$ 11,885,469
	\$ 11,712,513	\$ 3,675,264	\$ 4,025,692	\$ 9,692,340	\$ 9,268,082	\$ 8,085,147	\$ 9,616,187	\$ 4,578,237	\$ 3,735,912	\$ 12,014,502	\$ 10,047,385	\$ 10,304,324	\$ 11,712,513
<i>Telluride % Inc(Dec) in sales</i>	1.48%	-6.46%	8.35%	-5.00%	7.58%	14.35%	-7.30%	0.38%	24.55%	3.62%	9.01%	4.59%	
Sales - Frisco (4%)	\$ 15,159,550	\$ 11,959,850	\$ 9,084,150	\$ 11,907,025	\$ 13,901,450	\$ 13,212,975	\$ 12,465,350	\$ 10,035,550	\$ 11,724,425	\$ 16,569,300	\$ 14,379,925	\$ 13,982,425	\$ 16,122,675
	\$ 14,814,250	\$ 10,261,575	\$ 8,704,725	\$ 10,867,350	\$ 13,114,750	\$ 12,091,950	\$ 12,273,675	\$ 9,546,550	\$ 10,384,050	\$ 17,892,100	\$ 13,315,550	\$ 13,980,475	\$ 15,159,550
<i>Frisco % Inc(Dec) in sales</i>	2.33%	16.53%	4.36%	9.57%	6.00%	9.27%	1.56%	5.12%	12.91%	-7.39%	7.99%	0.01%	6.35%
Year-to-date:													4.78%
Sales - Estes Park (4%)	\$ 7,197,075	\$ 11,616,500	\$ 13,105,550	\$ 22,373,250	\$ 28,802,950	\$ 25,628,150	\$ 25,229,625	\$ 13,056,800	\$ 9,954,600	\$ 9,398,800	\$ 6,661,406	\$ 7,965,000	\$ 7,197,075
	\$ 8,086,900	\$ 8,836,975	\$ 11,818,200	\$ 20,952,700	\$ 26,913,800	\$ 22,357,375	\$ 23,748,725	\$ 11,936,625	\$ 8,501,450	\$ 11,756,675	\$ 7,528,975	\$ 6,950,425	\$ 8,086,900
<i>Estes % Inc(Dec) in sales</i>	-11.00%	31.43%	-10.89%	6.78%	7.02%	-14.63%	6.24%	9.38%	17.09%	-20.06%	-11.52%	-14.60%	
Sales - Mtn Village (4.5%)	\$ 9,417,453	\$ 1,974,147	\$ 1,024,904	\$ 2,377,331	\$ 3,212,345	\$ 3,408,902	\$ 2,639,733	\$ 1,291,483	\$ 1,086,546	\$ 8,537,484	\$ 3,425,444	\$ 3,742,489	\$ 4,703,133
	\$ 9,726,321	\$ 1,034,322	\$ 886,844	\$ 2,569,434	\$ 3,653,403	\$ 3,713,73							

CAST - Colorado Association of Ski Towns
Taxable Sales (based on Sales/Use tax collected)
2007/2006 to 2008/2007

	Mar. 07/06	Apr. 07/06	May 07/06	June 07/06	July 07/06	Aug. 07/06	Sept. 07/06	Oct. 07/06	Nov. 07/06	Dec. 07/06	Jan. 08/07	Feb. 08/07	Mar. 08/07
Winter Park	9.16%	-20.69%	34.32%	37.56%	-0.06%	18.35%	5.04%	12.73%	2.79%	8.12%	12.65%	4.11%	-0.95%
Aspen	0.21%	2.97%	15.29%	12.62%	7.43%	4.46%	6.03%	18.45%	-1.35%	4.40%	13.73%	12.41%	6.73%
Breckenridge	12.56%	4.10%	14.15%	19.94%	6.76%	7.42%	5.12%	7.40%	-2.85%	6.82%	1.07%	6.67%	1.57%
Vail	4.68%	3.94%	21.48%	18.33%	0.84%	10.15%	9.10%	12.06%	-6.47%	1.83%	6.84%	12.86%	9.84%
Steamboat Springs	5.50%	11.89%	7.81%	9.75%	3.85%	9.10%	12.63%	12.46%	2.82%	6.82%	5.93%	7.25%	3.10%
Glenwood Springs	14.37%	9.75%	13.13%	11.42%	13.24%	12.64%	8.31%	3.75%	10.89%	4.51%	1.57%	3.82%	-0.24%
Snowmass	7.55%	27.14%	9.77%	7.14%	5.61%	15.41%	-2.40%	36.65%	4.96%	-6.27%	-1.60%		
Gunnison	3.82%	8.12%	4.82%	11.19%	5.75%	3.75%	0.28%	4.17%	-0.17%	-0.85%	-6.60%		
Crested Butte	6.63%	4.73%	7.61%	4.16%	2.75%	5.24%	-1.63%	-3.42%	1.86%	0.00%	-1.46%		
Dillon	4.31%	45.85%	12.25%	11.88%	15.50%	4.56%	1.81%	26.47%	29.14%	7.63%	-6.07%	-9.18%	17.81%
Summit County	-0.42%	0.24%	-0.24%	14.74%	61.78%	20.79%	3.28%	-0.41%	17.73%	-15.31%			
Grand Junction	13.70%	12.46%	14.25%	9.04%	12.88%	11.16%	9.27%	13.18%	8.50%	10.07%	14.95%	14.30%	13.55%
Silverthorne	8.23%	9.22%	15.69%	21.65%	11.54%	9.58%	9.14%	14.69%	18.56%	12.57%	1.65%	9.61%	4.42%
Avon	2.20%	2.46%	13.98%	9.44%	14.66%	13.66%	10.54%	23.63%	18.60%	12.17%	5.37%	15.55%	
Telluride	1.48%	-6.46%	8.35%	-5.00%	7.58%	14.35%	-7.30%	0.38%	24.55%	3.62%	9.01%	4.59%	
Frisco	2.33%	16.55%	4.36%	9.57%	6.00%	9.27%	1.56%	5.12%	12.91%	-7.39%	7.99%	0.01%	6.35%
Estes Park	-11.00%	31.45%	10.89%	6.78%	7.02%	14.63%	6.24%	9.38%	17.09%	-20.06%	-11.52%	14.60%	
Mtn Village	-3.18%	90.86%	15.57%	-7.48%	-12.07%	-8.21%	-16.59%	-26.08%	-35.26%	2.01%	-4.74%	2.18%	5.91%

CAST - Monthly Comparison

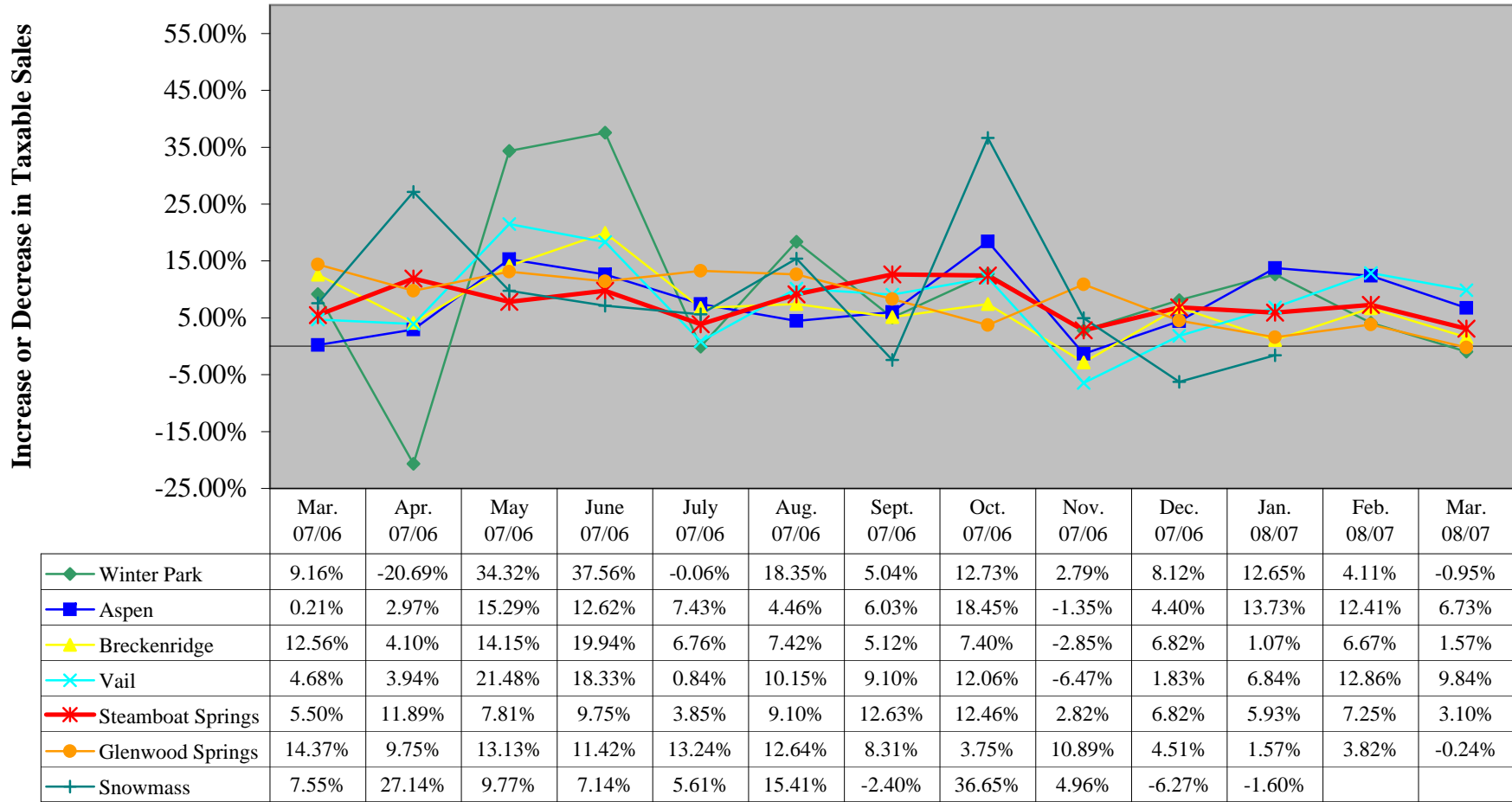


Mountain Communities
Taxable Sales Comparison
2007/2006 to 2008/2007

Actual Mountain Communities' Taxable Sales

	Mar. 2007/2006	Apr. 2007/2006	May 2007/2006	June 2007/2006	July 2007/2006	Aug. 2007/2006	Sept. 2007/2006	Oct. 2007/2006	Nov. 2007/2006	Dec. 2007/2006	Jan. 2008/2007	Feb. 2008/2007	Mar. 2008/2007
Sales - Winter Park (5%)	\$ 17,526,960	\$ 5,105,520	\$ 2,275,040	\$ 5,203,660	\$ 5,462,080	\$ 5,343,380	\$ 4,773,960	\$ 2,921,900	\$ 4,326,440	\$ 14,267,820	\$ 12,822,940	\$ 12,421,840	\$ 17,360,140
	\$ 16,055,700	\$ 6,437,480	\$ 1,693,720	\$ 3,782,960	\$ 5,465,540	\$ 4,514,720	\$ 4,544,800	\$ 2,591,880	\$ 4,208,820	\$ 13,195,840	\$ 11,382,580	\$ 11,931,640	\$ 17,526,960
<i>Winter Park % Inc(Dec) in sales</i>	9.16%	-20.69%	34.32%	37.56%	-0.06%	18.35%	5.04%	12.73%	2.79%	8.12%	12.65%	4.11%	-0.95%
	Year-to-date:												4.32%
Sales - Aspen (2.2%)	\$ 62,973,182	\$ 22,596,455	\$ 17,069,545	\$ 39,155,864	\$ 52,094,818	\$ 46,806,682	\$ 35,917,000	\$ 22,714,182	\$ 21,217,500	\$ 76,078,773	\$ 65,846,455	\$ 61,818,227	\$ 67,212,773
	\$ 62,842,636	\$ 21,945,591	\$ 14,805,182	\$ 34,768,409	\$ 48,489,727	\$ 44,807,500	\$ 33,873,045	\$ 19,176,955	\$ 21,507,364	\$ 72,872,818	\$ 57,896,045	\$ 54,994,227	\$ 62,973,182
<i>Aspen % Inc(Dec) in sales</i>	0.21%	2.97%	15.29%	12.62%	7.43%	4.46%	6.03%	18.45%	-1.35%	4.40%	13.73%	12.41%	6.73%
	Year-to-date:												10.81%
Sales - Breckenridge (2.5%)	\$ 57,028,578	\$ 23,929,804	\$ 12,210,151	\$ 20,582,804	\$ 25,770,664	\$ 23,651,510	\$ 21,219,796	\$ 14,644,972	\$ 17,878,532	\$ 50,642,289	\$ 45,077,293	\$ 46,738,166	\$ 57,926,635
	\$ 50,664,330	\$ 22,986,818	\$ 10,696,830	\$ 17,160,970	\$ 24,139,228	\$ 22,017,921	\$ 20,186,131	\$ 13,635,497	\$ 18,403,648	\$ 47,408,091	\$ 44,599,942	\$ 43,814,052	\$ 57,028,578
<i>Breckenridge % Inc(Dec) in sales</i>	12.56%	4.10%	14.15%	19.94%	6.76%	7.42%	5.12%	7.40%	-2.85%	6.82%	1.07%	6.67%	1.57%
	Year-to-date:												2.96%
Sales - Steamboat Springs (4%)	\$ 61,248,425	\$ 25,415,025	\$ 25,377,525	\$ 37,789,375	\$ 41,922,275	\$ 39,171,450	\$ 36,827,125	\$ 32,040,500	\$ 27,885,550	\$ 63,574,175	\$ 54,148,425	\$ 54,485,350	\$ 63,148,875
	\$ 58,057,025	\$ 22,714,600	\$ 23,539,875	\$ 34,431,725	\$ 40,367,675	\$ 35,902,875	\$ 32,696,125	\$ 28,491,200	\$ 27,121,450	\$ 59,517,200	\$ 51,116,525	\$ 50,800,850	\$ 61,248,425
<i>Steamboat % Inc(Dec) in sales</i>	5.50%	11.89%	7.81%	9.75%	3.85%	9.10%	12.63%	12.46%	2.82%	6.82%	5.93%	7.25%	3.10%
	Year-to-date:												5.28%
Sales - Vail (4%)	\$ 74,661,150	\$ 33,268,500	\$ 13,644,600	\$ 23,825,425	\$ 31,644,525	\$ 29,068,650	\$ 22,707,950	\$ 17,212,975	\$ 18,696,925	\$ 70,546,775	\$ 74,340,525	\$ 76,704,050	\$ 82,005,150
	\$ 71,323,850	\$ 32,008,100	\$ 11,232,075	\$ 20,134,050	\$ 31,381,075	\$ 26,390,350	\$ 20,813,725	\$ 15,359,900	\$ 19,989,550	\$ 69,281,450	\$ 69,582,650	\$ 67,966,075	\$ 74,661,150
<i>Vail % Inc(Dec) in sales</i>	4.68%	3.94%	21.48%	18.33%	0.84%	10.15%	9.10%	12.06%	-6.47%	1.83%	6.84%	12.86%	9.84%
	Year-to-date:												9.82%
Sales - Glenwood (3.45%) (3.7% Beg. Jan. 2006)	\$ 36,202,757	\$ 31,248,459	\$ 35,452,973	\$ 43,269,351	\$ 39,746,378	\$ 39,902,108	\$ 41,660,703	\$ 34,269,162	\$ 35,014,811	\$ 48,455,973	\$ 31,520,324	\$ 30,483,703	\$ 36,116,541
	\$ 31,654,811	\$ 28,472,108	\$ 31,339,108	\$ 38,833,973	\$ 35,099,108	\$ 35,424,351	\$ 38,463,676	\$ 33,031,919	\$ 31,577,324	\$ 46,365,405	\$ 31,031,595	\$ 29,362,541	\$ 36,202,757
<i>Glenwood % Inc(Dec) in sales</i>	14.37%	9.75%	13.13%	11.42%	13.24%	12.64%	8.31%	3.75%	10.89%	4.51%	1.57%	3.82%	-0.24%
	Year-to-date:												1.58%
Sales - Snowmass (1%)	\$ 26,619,686	\$ 6,834,485	\$ 2,333,115	\$ 5,351,715	\$ 7,267,287	\$ 7,804,971	\$ 5,519,200	\$ 3,551,228	\$ 3,997,945	\$ 19,078,886	\$ 24,342,543		
	\$ 24,751,372	\$ 5,375,715	\$ 2,125,486	\$ 4,995,057	\$ 6,880,972	\$ 6,762,571	\$ 5,654,914	\$ 2,598,743	\$ 3,809,171	\$ 20,354,258	\$ 24,739,257		
<i>Snowmass % Inc(Dec) in sales</i>	7.55%	27.14%	9.77%	7.14%	5.61%	15.41%	-2.40%	36.65%	4.96%	-6.27%	-1.60%		

Mountain Community - Monthly Comparison



Sales tax information for Snowmass was not available at the time of the report.