



December 2004 Sales, Use, and Accommodation Tax Report

The City of Steamboat Springs Sales, Use, and Accommodation Tax Report examines tax collections for the month of December 2004.

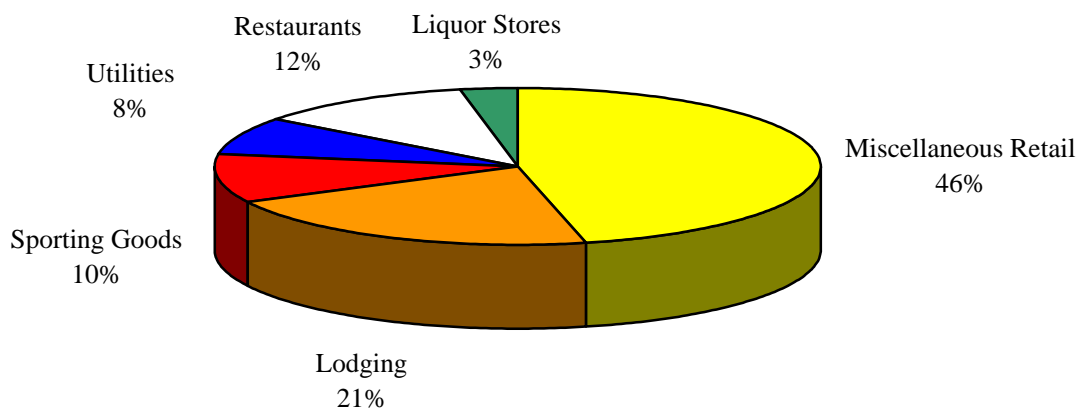
This report can be found at the following web address:
http://www.steamboatsprings.net/sales_tax/index1.htm

Sales Tax

December 2004 sales tax collections increased 12.20% from sales tax collections for the month of December 2003. Year-to-date, sales tax collections increased 7.42%.

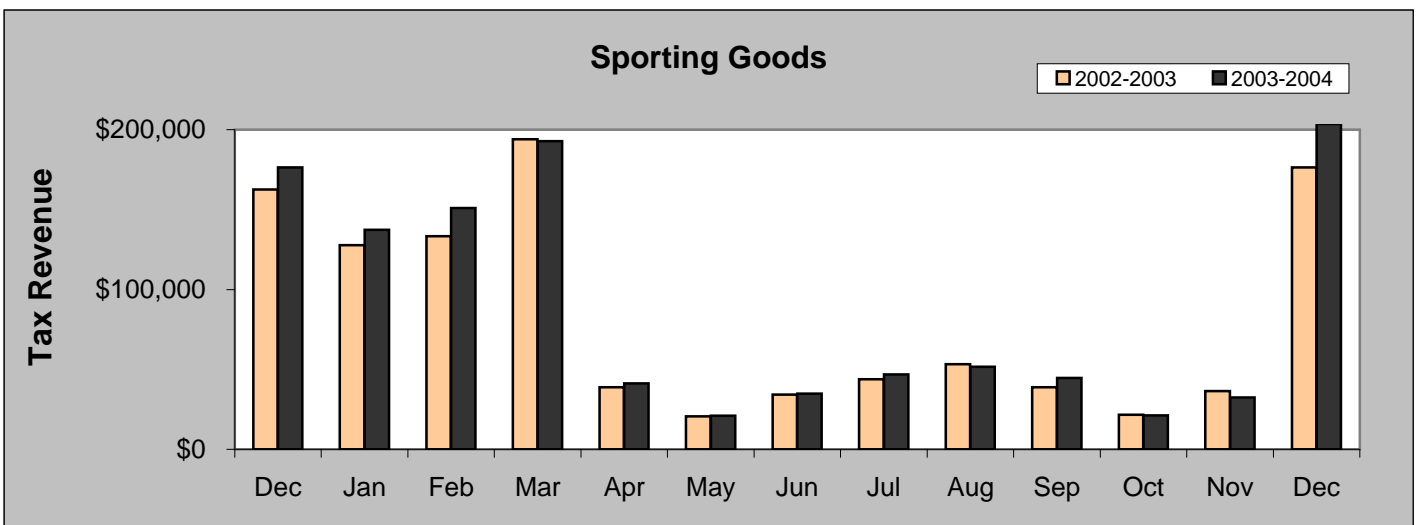
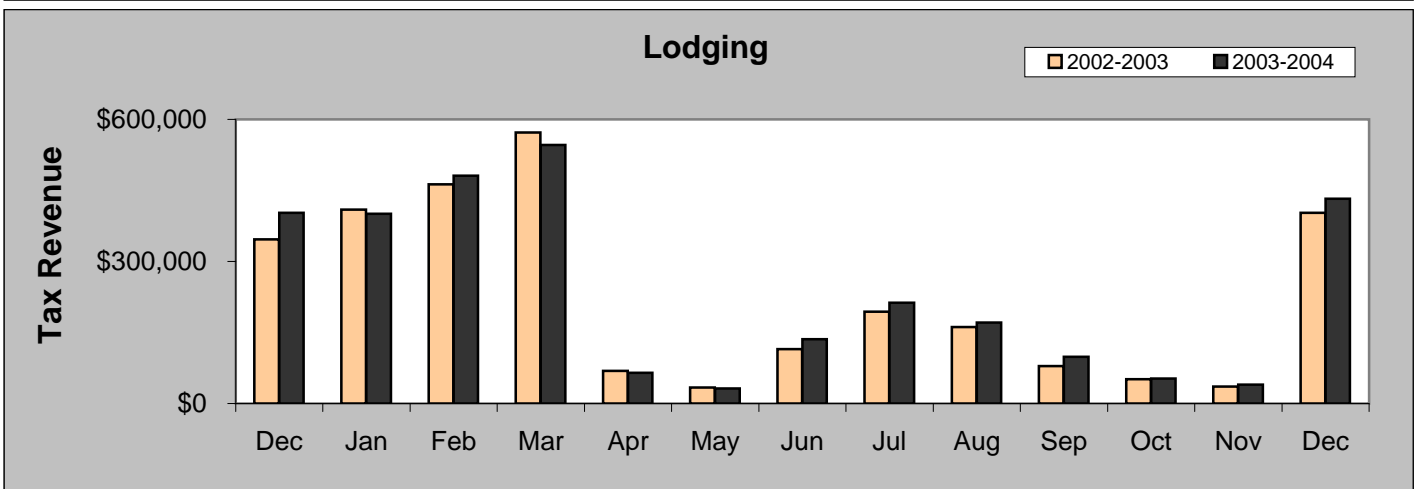
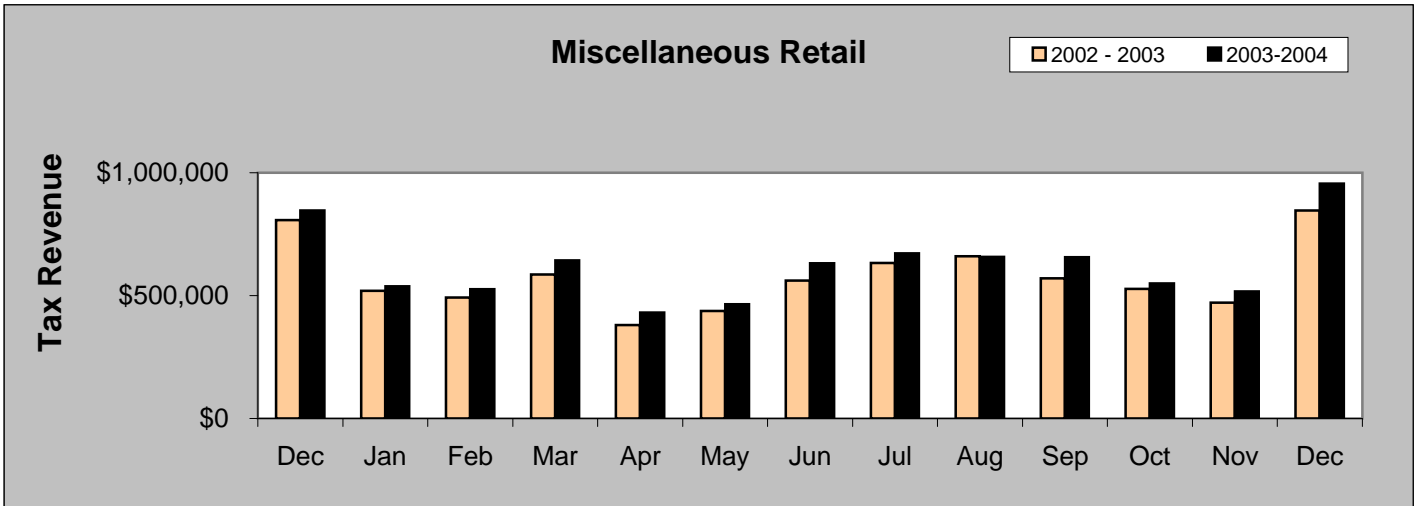
Sales Tax December 2004	Sales Tax December 2003	% increase/decrease over last year
\$2,056,525	\$1,832,882	12.20%
Sales Tax Year-to-date	Sales Tax January-December 2003	% increase/decrease over last year
\$15,034,766	\$13,995,910	7.42%

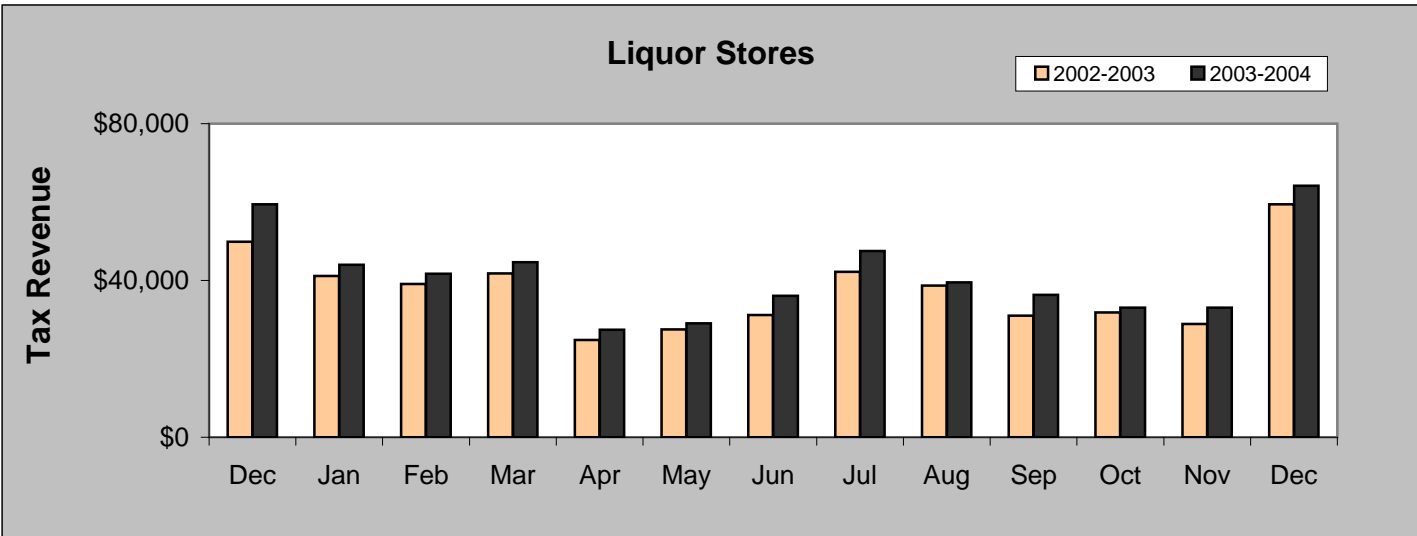
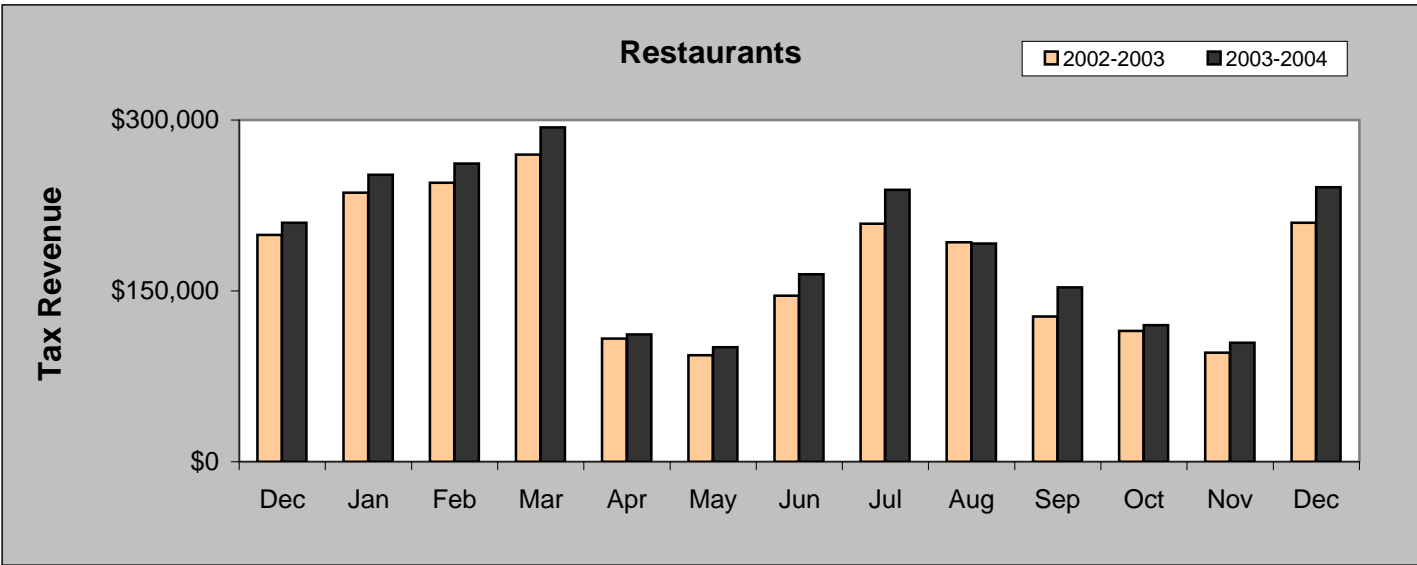
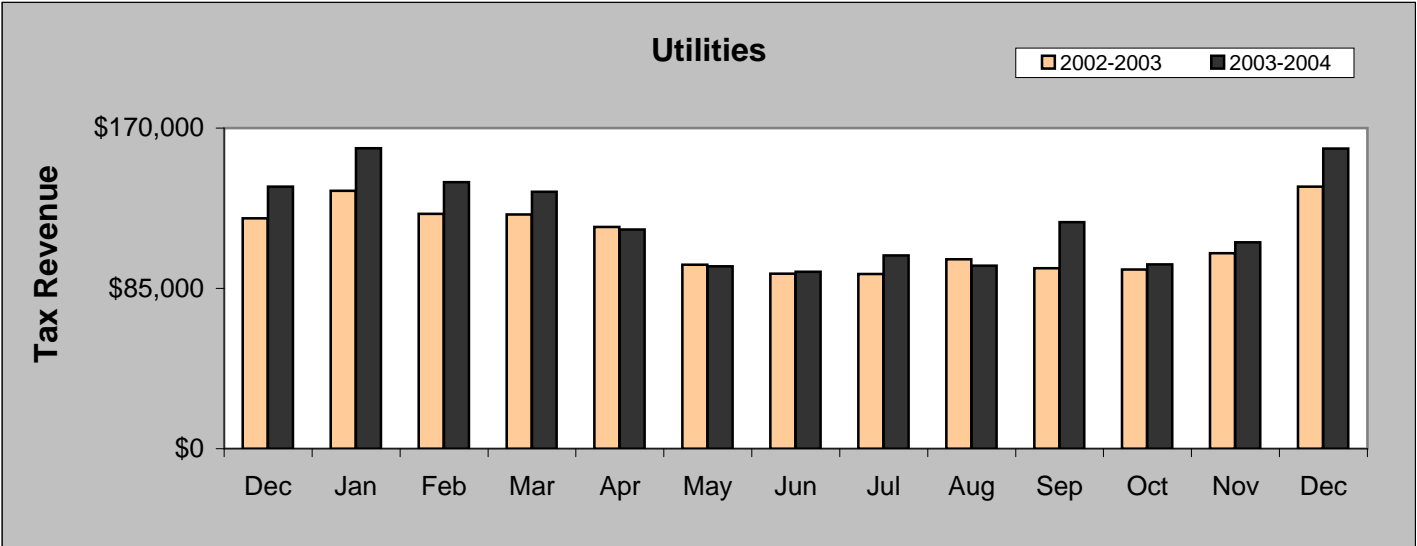
December 2004 Sales Categories



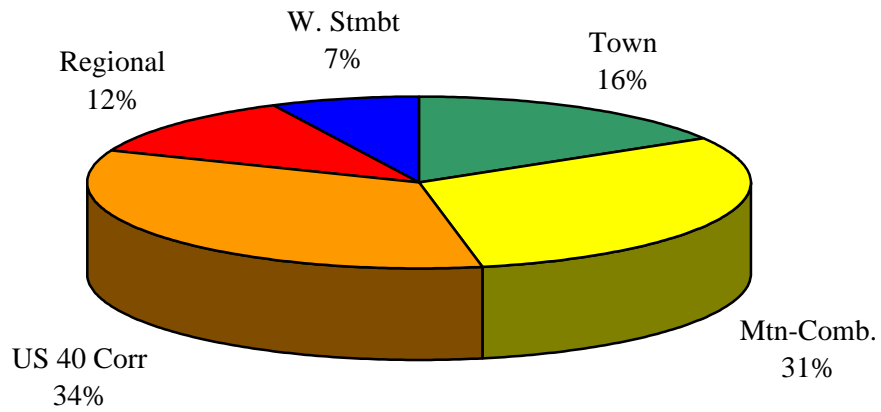
DECEMBER COMPARISON BY CATEGORY

	2003	2004	%
Miscellaneous Retail	\$845,836	\$956,185	13.05%
Lodging	\$402,426	\$432,451	7.46%
Sporting Goods	\$176,330	\$203,515	15.42%
Utilities	\$138,918	\$159,139	14.56%
Restaurants	\$209,927	\$241,045	14.82%
Liquor Stores	\$59,446	\$64,191	7.98%

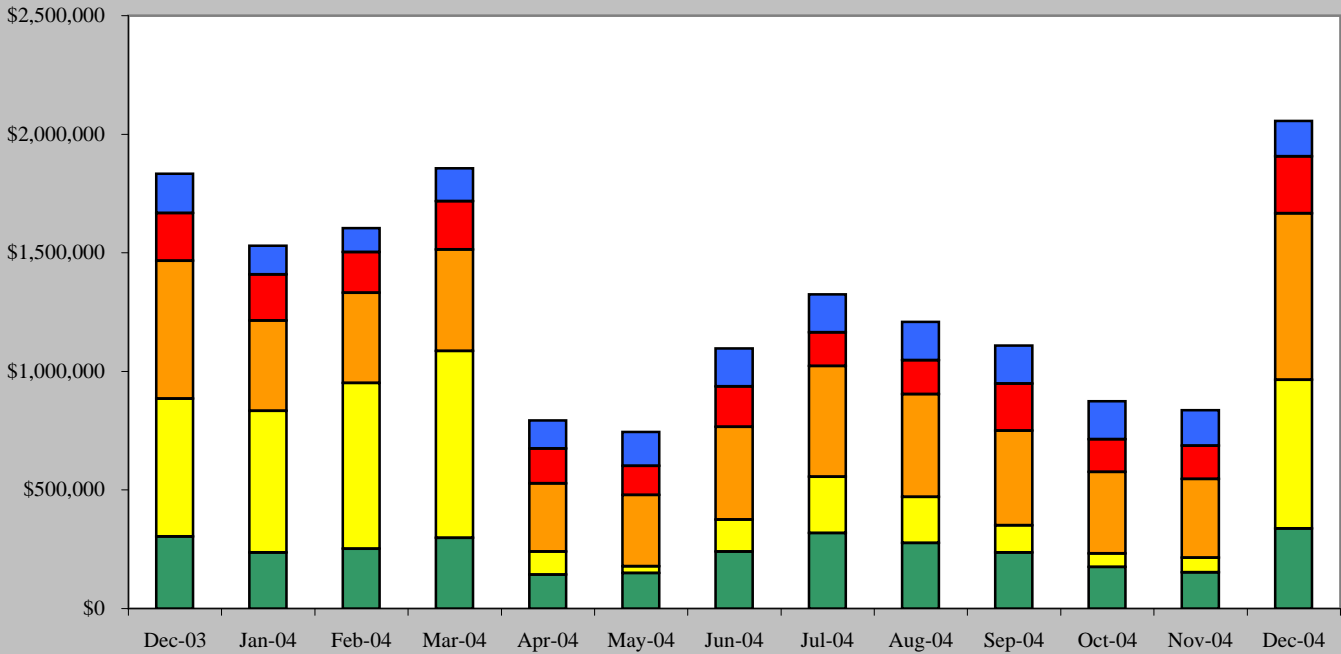




December 2004 Sales Tax By Area



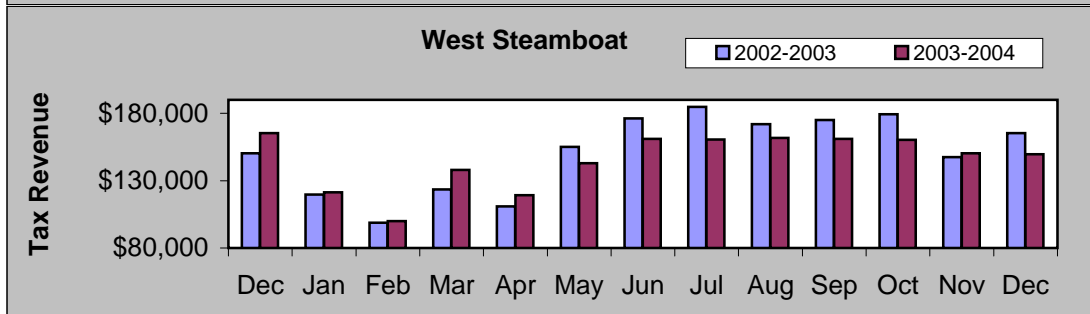
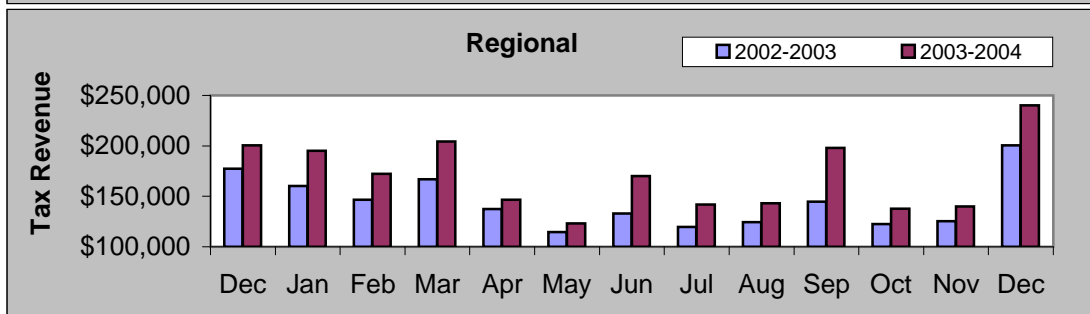
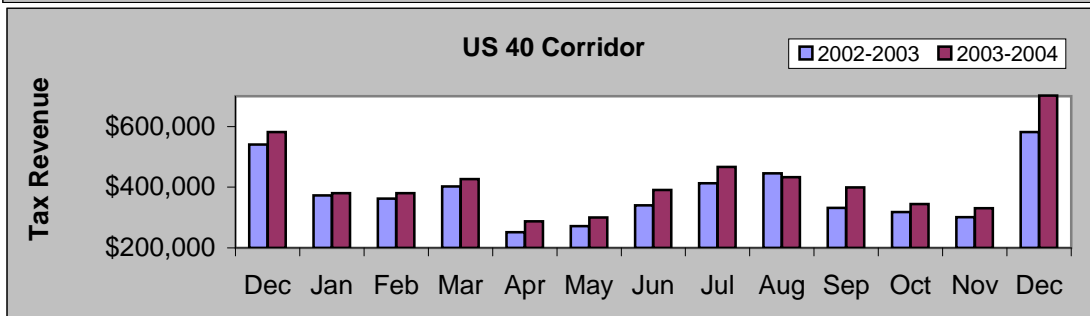
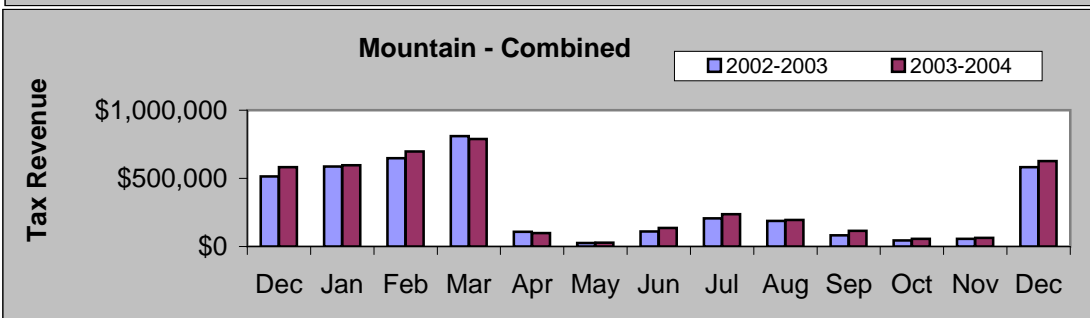
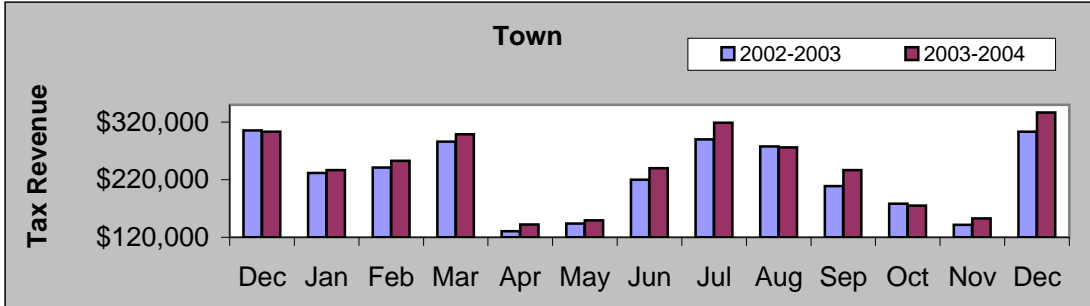
December 2003 - December 2004



	Dec-03	Jan-04	Feb-04	Mar-04	Apr-04	May-04	Jun-04	Jul-04	Aug-04	Sep-04	Oct-04	Nov-04	Dec-04
■ W. Stmbt	\$165,371	\$121,407	\$100,065	\$137,877	\$119,085	\$142,900	\$161,068	\$160,453	\$161,771	\$161,049	\$160,197	\$150,258	\$149,607
■ Regional	\$200,419	\$195,135	\$172,267	\$204,451	\$146,640	\$123,213	\$170,170	\$141,977	\$143,018	\$197,863	\$137,712	\$140,042	\$240,139
■ US 40 Corr	\$581,568	\$379,902	\$380,431	\$427,056	\$287,957	\$299,987	\$390,720	\$467,270	\$432,694	\$399,381	\$344,280	\$330,997	\$702,164
■ Mtn-Comb.	\$582,418	\$597,391	\$698,252	\$787,819	\$97,578	\$28,762	\$135,131	\$236,484	\$194,751	\$114,687	\$56,250	\$62,282	\$627,924
■ Town	\$303,106	\$236,526	\$252,621	\$298,732	\$142,348	\$149,594	\$239,996	\$318,735	\$276,387	\$236,602	\$175,192	\$152,828	\$336,691

DECEMBER COMPARISON BY AREA

Area	2003	2004	%
Town	\$303,106	\$336,691	11.08%
Mountain - Combined	\$582,418	\$627,924	7.81%
US 40 Corridor	\$581,568	\$702,164	20.74%
Regional	\$200,419	\$240,139	19.82%
West Steamboat	\$165,371	\$149,607	-9.53%

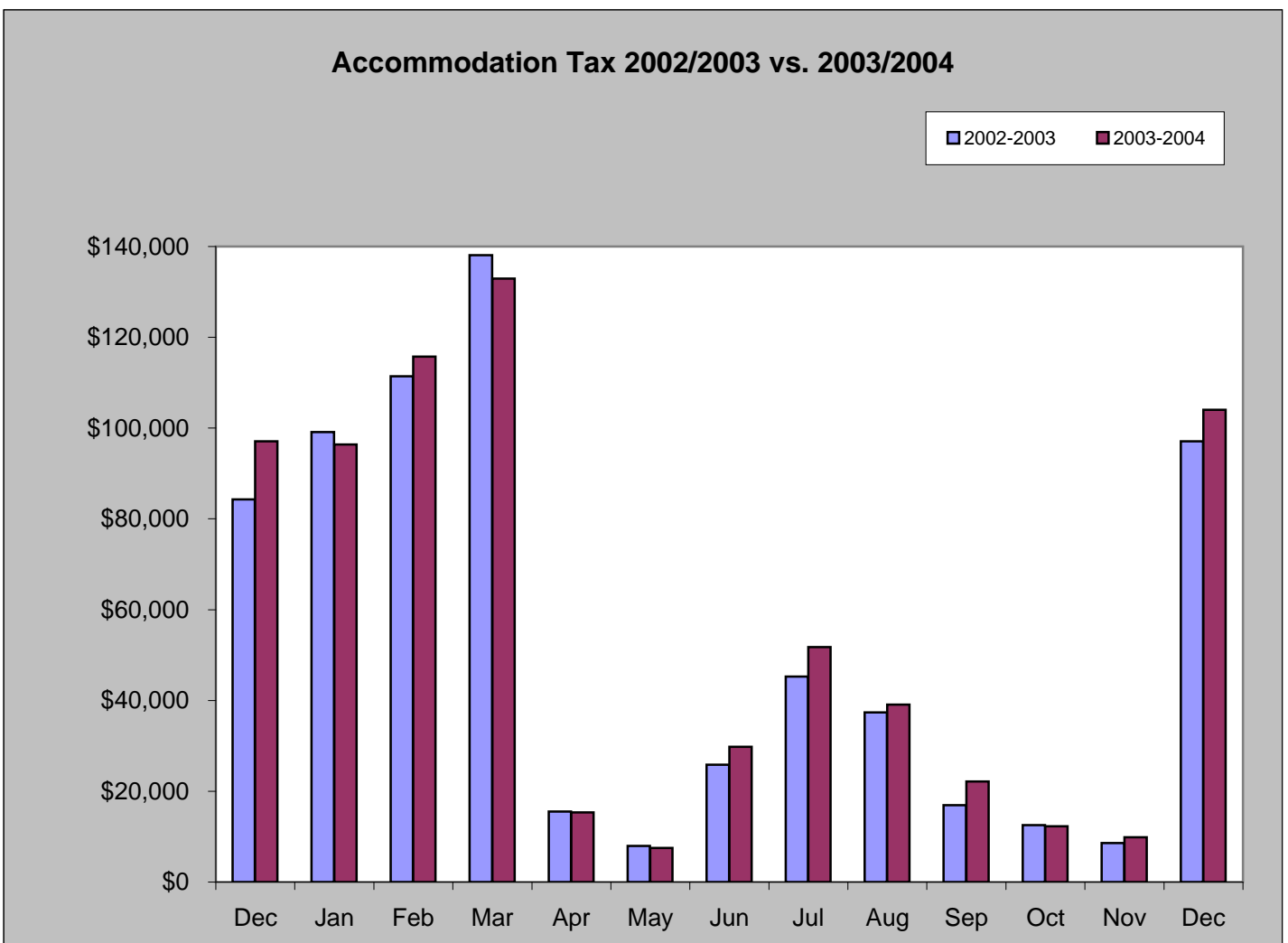


Accommodation Tax

December 2004 accommodation tax increased 7.11% from December 2003. Year-to-date, accommodation tax collections increased 3.42%.

December 2004 Accommodation Tax	December 2003 Accommodation Tax	% increase/decrease
\$104,002	\$97,097	7.11%

Accommodation Tax Year-to-date	Accommodation Tax January-December 2003	% increase/decrease
\$636,895	\$615,825	3.42%



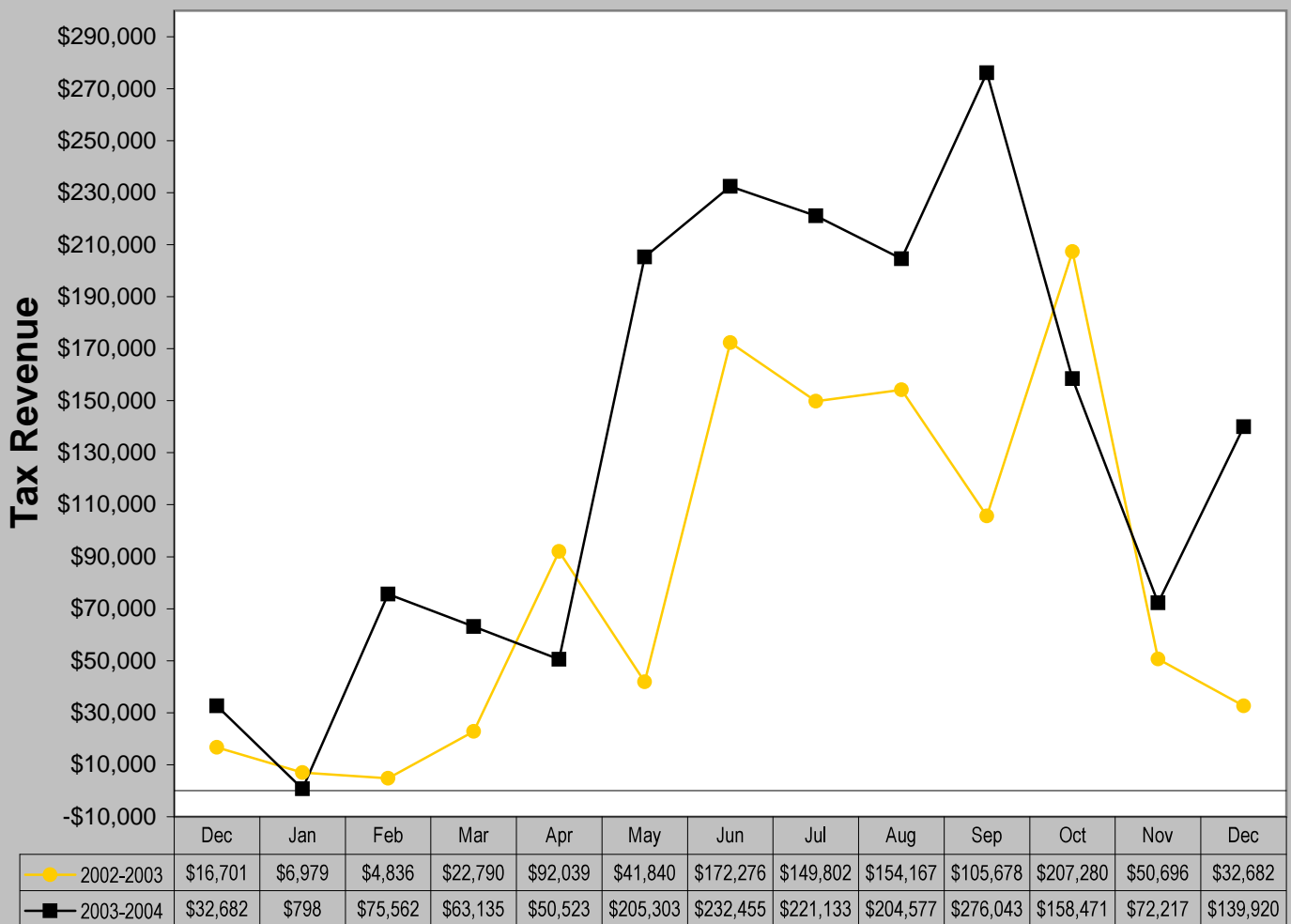
Building Use Tax

Building Use Tax collections increased 328.13% from December 2003. Year-to-date, building use tax collections increased 63.31%.

December 2004 Building Use Tax	December 2003 Building Use Tax	% increase/decrease
\$139,920	\$32,682	328.13%

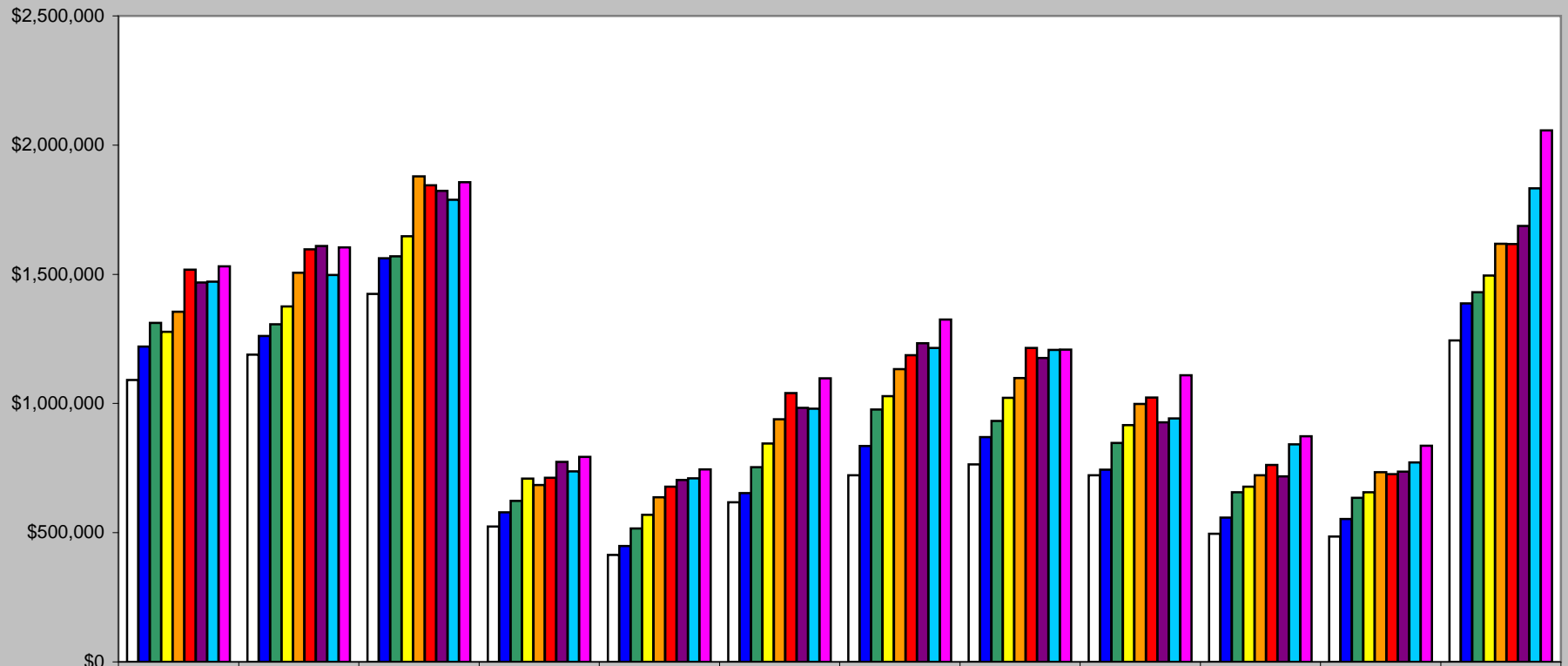
Building Use Tax Year-to-date	Building Use Tax January-December 2003	% increase/decrease
\$1,700,137	\$1,041,065	63.31%

Building Use Tax - 2002/2003 vs. 2003/2004



Historical Sales Tax Data

Sales Tax Totals - 1996 to 2004



	January	February	March	April	May	June	July	August	September	October	November	December
□ 1996	\$1,090,630	\$1,189,358	\$1,424,411	\$523,969	\$413,769	\$617,286	\$722,254	\$764,102	\$721,914	\$496,408	\$485,240	\$1,244,240
■ 1997	\$1,219,831	\$1,261,490	\$1,562,166	\$579,050	\$448,400	\$653,333	\$835,532	\$869,539	\$743,613	\$558,375	\$553,579	\$1,387,412
■ 1998	\$1,312,107	\$1,306,179	\$1,569,306	\$623,003	\$516,115	\$753,943	\$976,649	\$932,296	\$847,365	\$656,052	\$635,383	\$1,430,670
■ 1999	\$1,277,195	\$1,375,120	\$1,647,187	\$709,777	\$568,771	\$844,830	\$1,028,270	\$1,021,558	\$916,329	\$677,995	\$656,063	\$1,495,712
■ 2000	\$1,355,249	\$1,505,684	\$1,879,557	\$684,244	\$637,578	\$939,334	\$1,133,251	\$1,098,829	\$998,295	\$722,617	\$734,644	\$1,617,798
■ 2001	\$1,517,372	\$1,596,296	\$1,844,411	\$712,155	\$678,521	\$1,040,565	\$1,186,620	\$1,214,665	\$1,023,069	\$762,275	\$726,706	\$1,617,531
■ 2002	\$1,468,242	\$1,609,764	\$1,822,635	\$774,194	\$704,180	\$983,138	\$1,233,795	\$1,175,637	\$927,574	\$718,161	\$736,832	\$1,687,211
■ 2003	\$1,471,061	\$1,497,385	\$1,788,181	\$737,659	\$710,214	\$979,859	\$1,215,120	\$1,207,313	\$942,624	\$842,089	\$771,523	\$1,832,882
■ 2004	\$1,530,361	\$1,603,636	\$1,855,935	\$793,608	\$744,456	\$1,097,085	\$1,324,919	\$1,208,621	\$1,109,582	\$873,631	\$836,407	\$2,056,525

This document was created with Win2PDF available at <http://www.daneprairie.com>.
The unregistered version of Win2PDF is for evaluation or non-commercial use only.