



## June 2005

# Sales, Use, and Accommodation Tax Report

The City of Steamboat Springs Sales, Use, and Accommodation Tax Report examines tax collections for the month of June 2005.

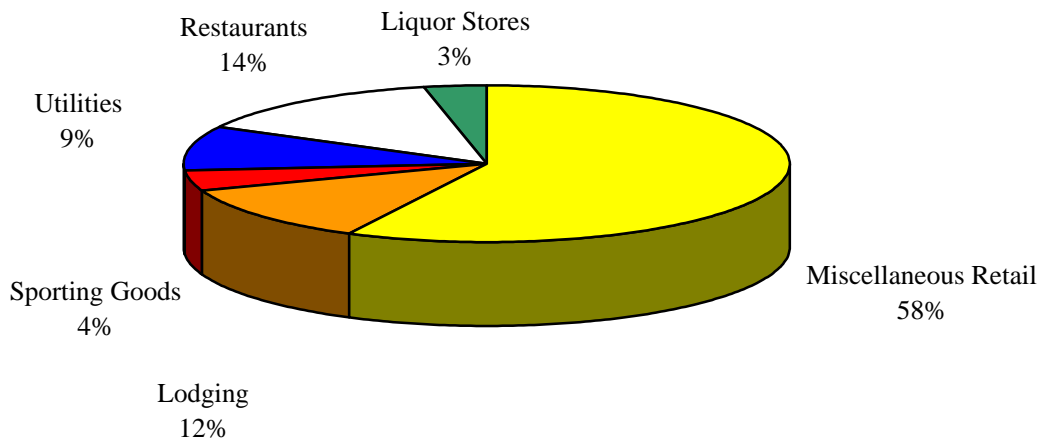
This report can be found at the following web address:  
[http://www.steamboatsprings.net/sales\\_tax/index1.htm](http://www.steamboatsprings.net/sales_tax/index1.htm)

### Sales Tax

June 2005 sales tax collections increased 9.90% from sales tax collections for the month of June 2004. Year-to-date, sales tax collections increased 6.57%.

Sales Tax June 2005 *	Sales Tax June 2004	% increase/decrease over last year
\$1,206,349	\$1,097,678	9.90%
Sales Tax Year-to-date	Sales Tax January-June 2004	% increase/decrease over last year
\$8,133,212	\$7,631,526	6.57%

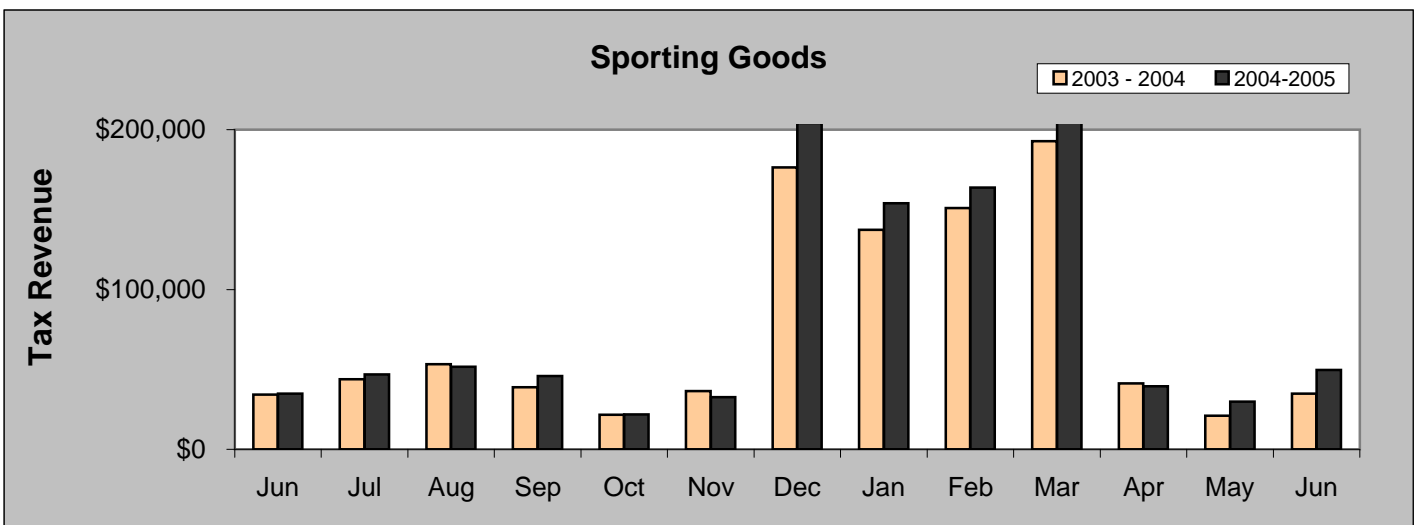
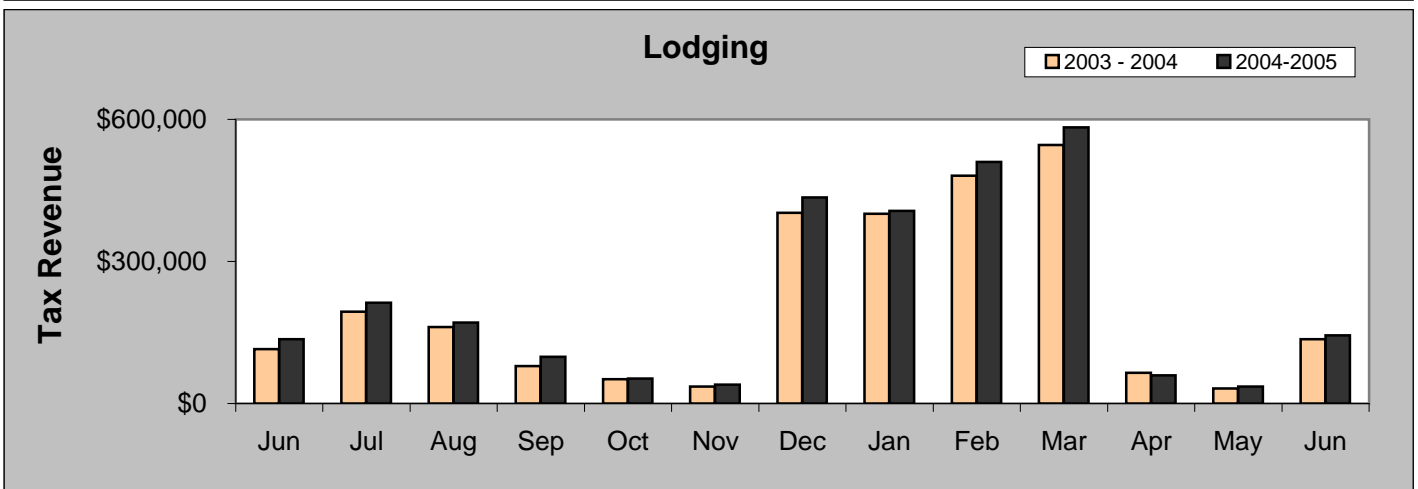
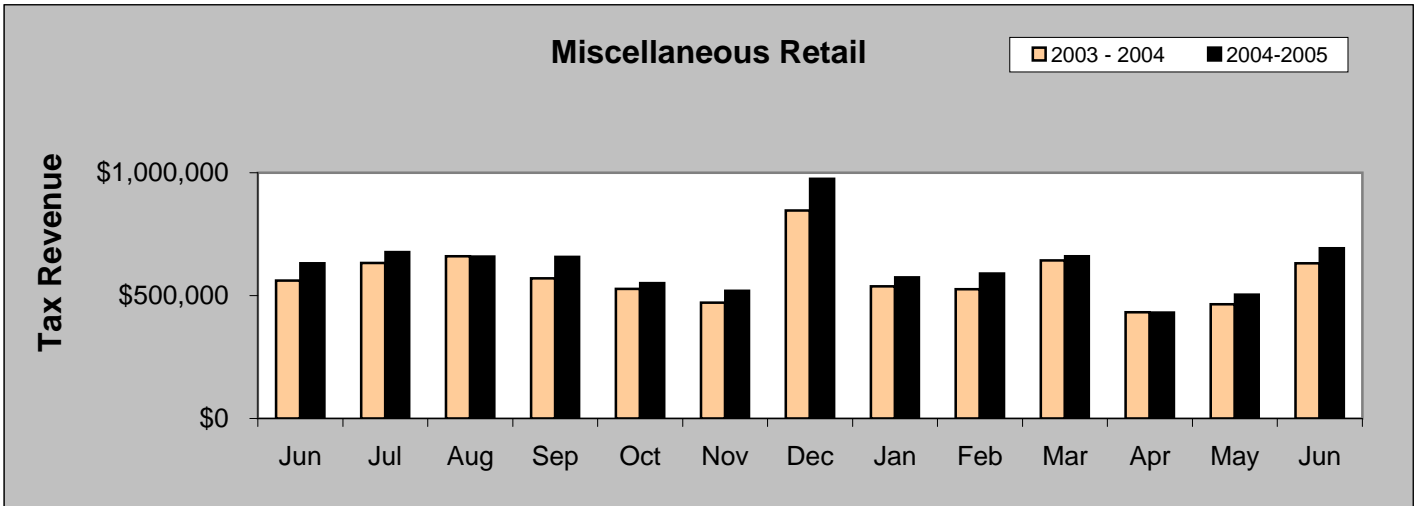
### June 2005 Sales Categories

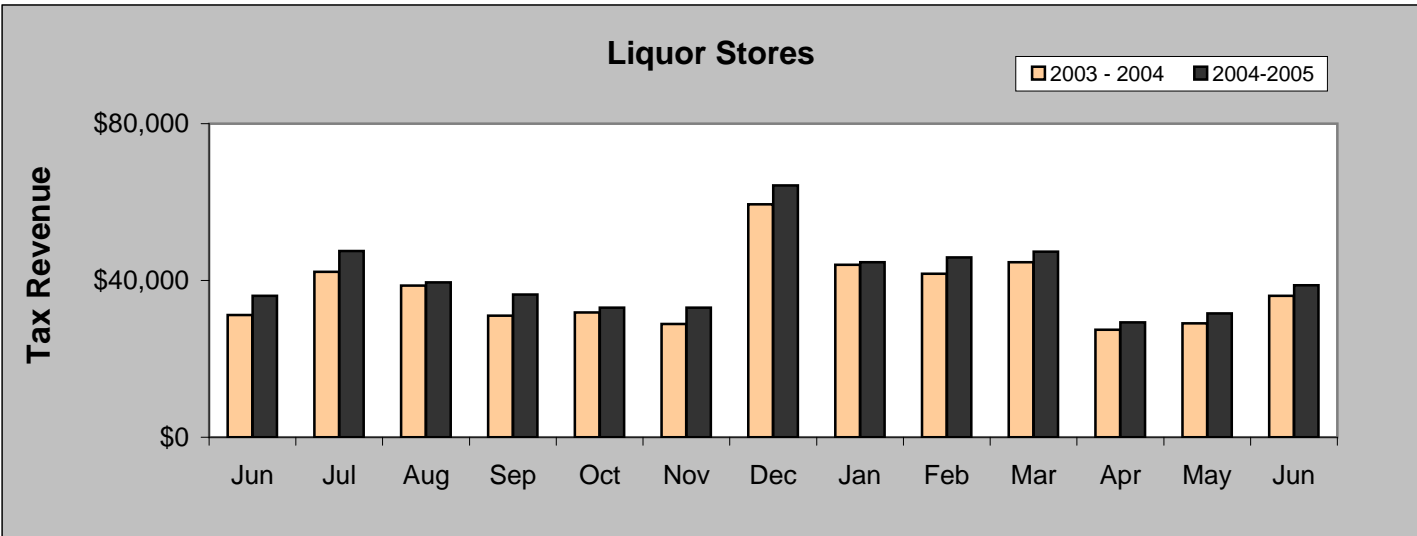
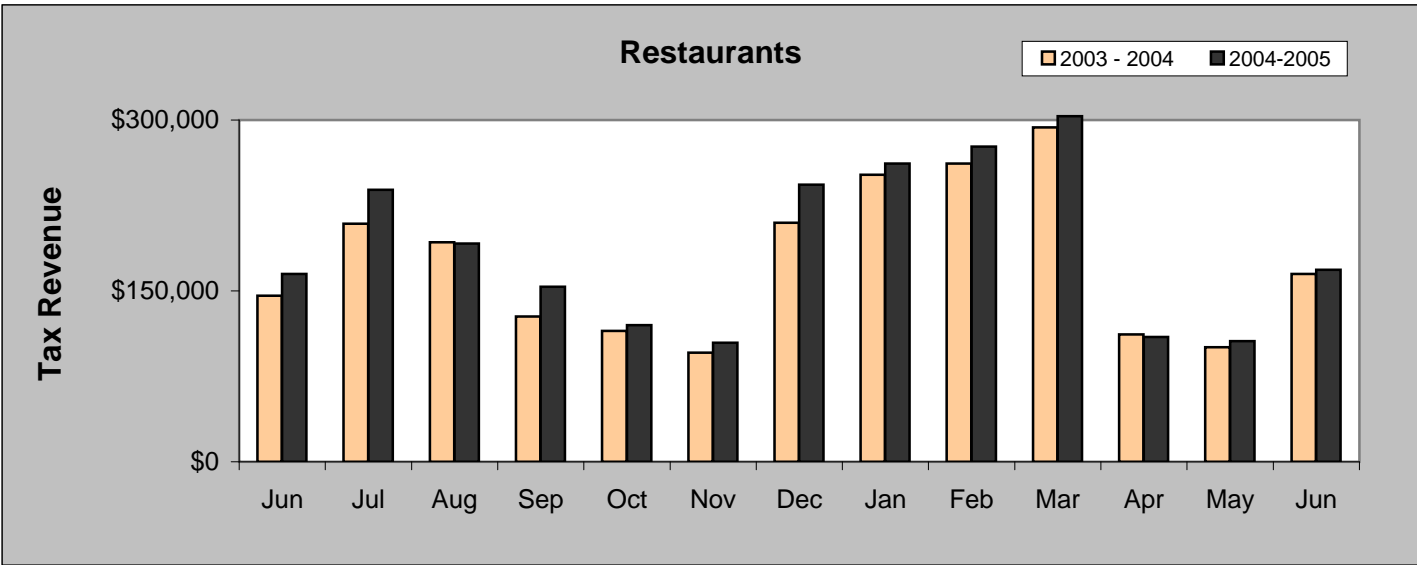
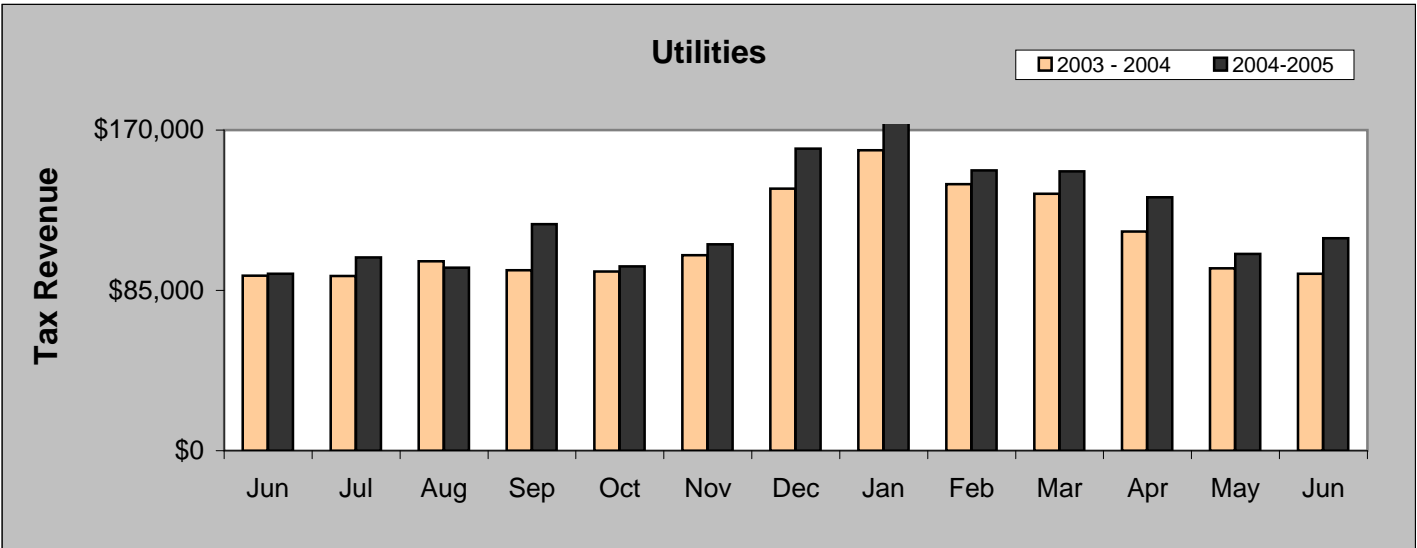


\* Includes amounts that will accrue to the Urban Renewal Authority.

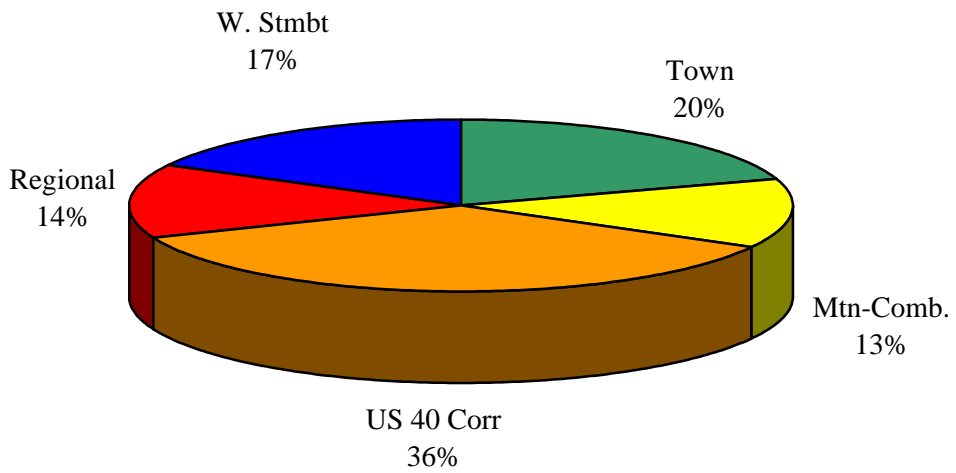
### JUNE COMPARISON BY CATEGORY

	2004	2005	%
Miscellaneous Retail	\$632,050	\$693,243	9.68%
Lodging	\$136,024	\$143,660	5.61%
Sporting Goods	\$34,889	\$49,680	42.39%
Utilities	\$93,809	\$112,601	20.03%
Restaurants	\$164,831	\$168,416	2.17%
Liquor Stores	\$36,077	\$38,750	7.41%

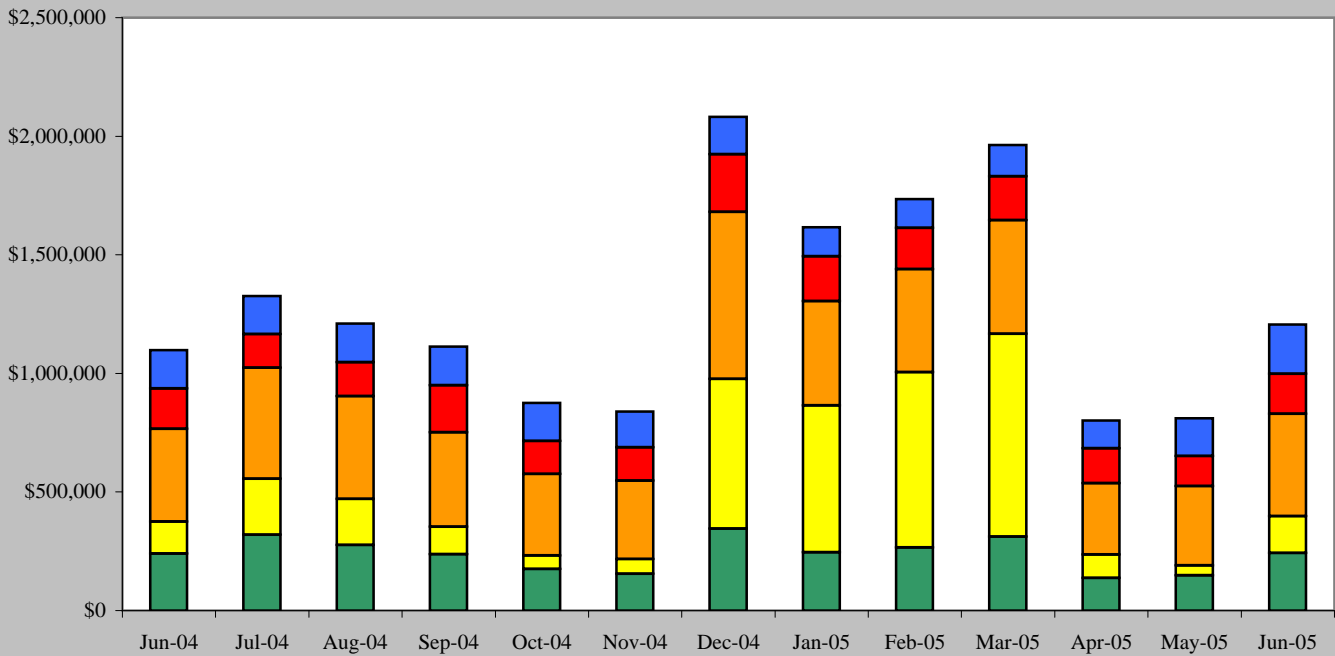




### June 2005 Sales Tax By Area



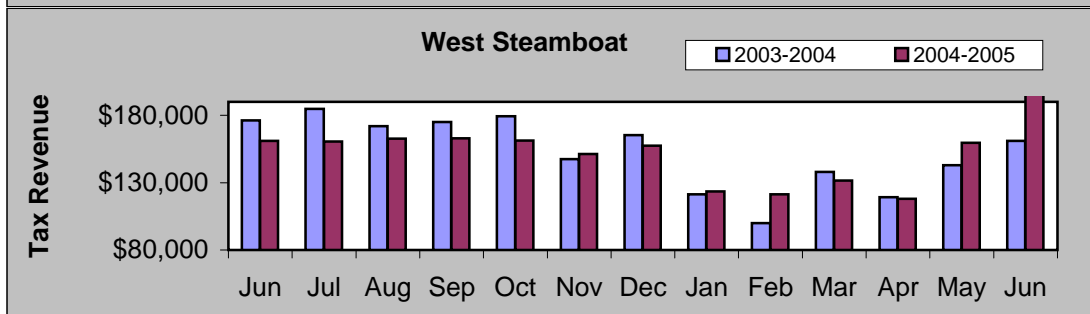
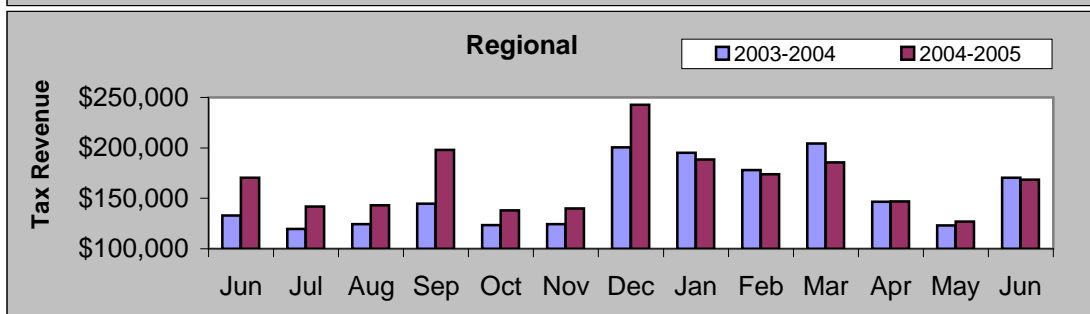
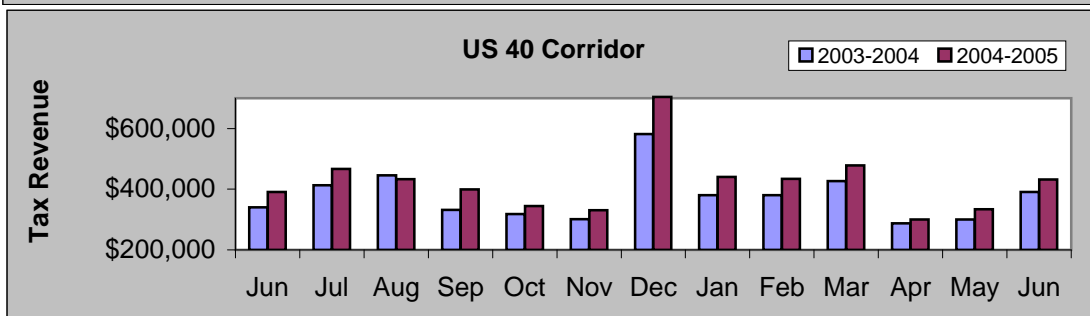
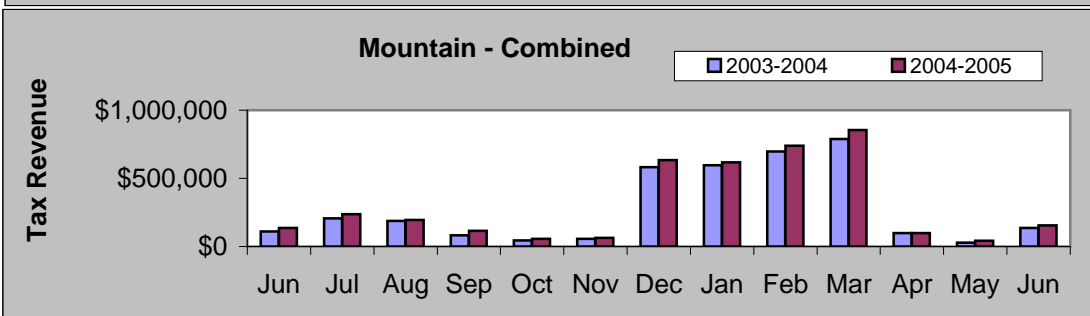
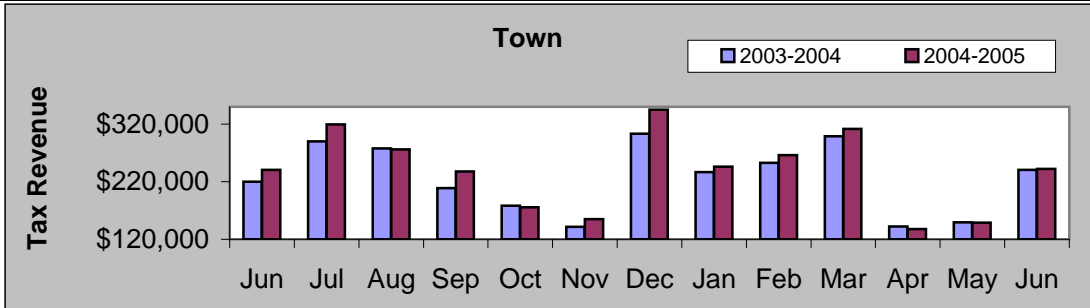
### June 2004 - June 2005



	Jun-04	Jul-04	Aug-04	Sep-04	Oct-04	Nov-04	Dec-04	Jan-05	Feb-05	Mar-05	Apr-05	May-05	Jun-05
W. Stmbt	\$161,068	\$160,453	\$162,675	\$162,929	\$161,355	\$151,286	\$157,385	\$123,390	\$121,284	\$131,545	\$118,033	\$159,679	\$208,231
Regional	\$170,365	\$141,991	\$143,018	\$197,863	\$138,043	\$140,042	\$242,822	\$188,603	\$173,797	\$185,693	\$147,022	\$127,033	\$168,364
US 40 Corr	\$390,720	\$467,270	\$432,776	\$399,186	\$344,359	\$331,132	\$704,153	\$440,376	\$433,657	\$478,988	\$300,482	\$333,788	\$432,406
Mtn-Comb.	\$135,131	\$236,701	\$194,801	\$114,872	\$56,276	\$62,302	\$632,651	\$618,243	\$739,470	\$855,124	\$98,921	\$41,762	\$154,972
Town	\$240,395	\$319,382	\$276,387	\$237,940	\$175,820	\$154,827	\$344,766	\$245,897	\$266,165	\$311,479	\$137,509	\$148,923	\$242,376

### JUNE COMPARISON BY AREA

Area	2004	2005	%
Town	\$240,395	\$242,376	0.82%
Mountain - Combined	\$135,131	\$154,972	14.68%
US 40 Corridor	\$390,720	\$432,406	10.67%
Regional	\$170,365	\$168,364	-1.17%
West Steamboat	\$161,068	\$208,231	29.28%

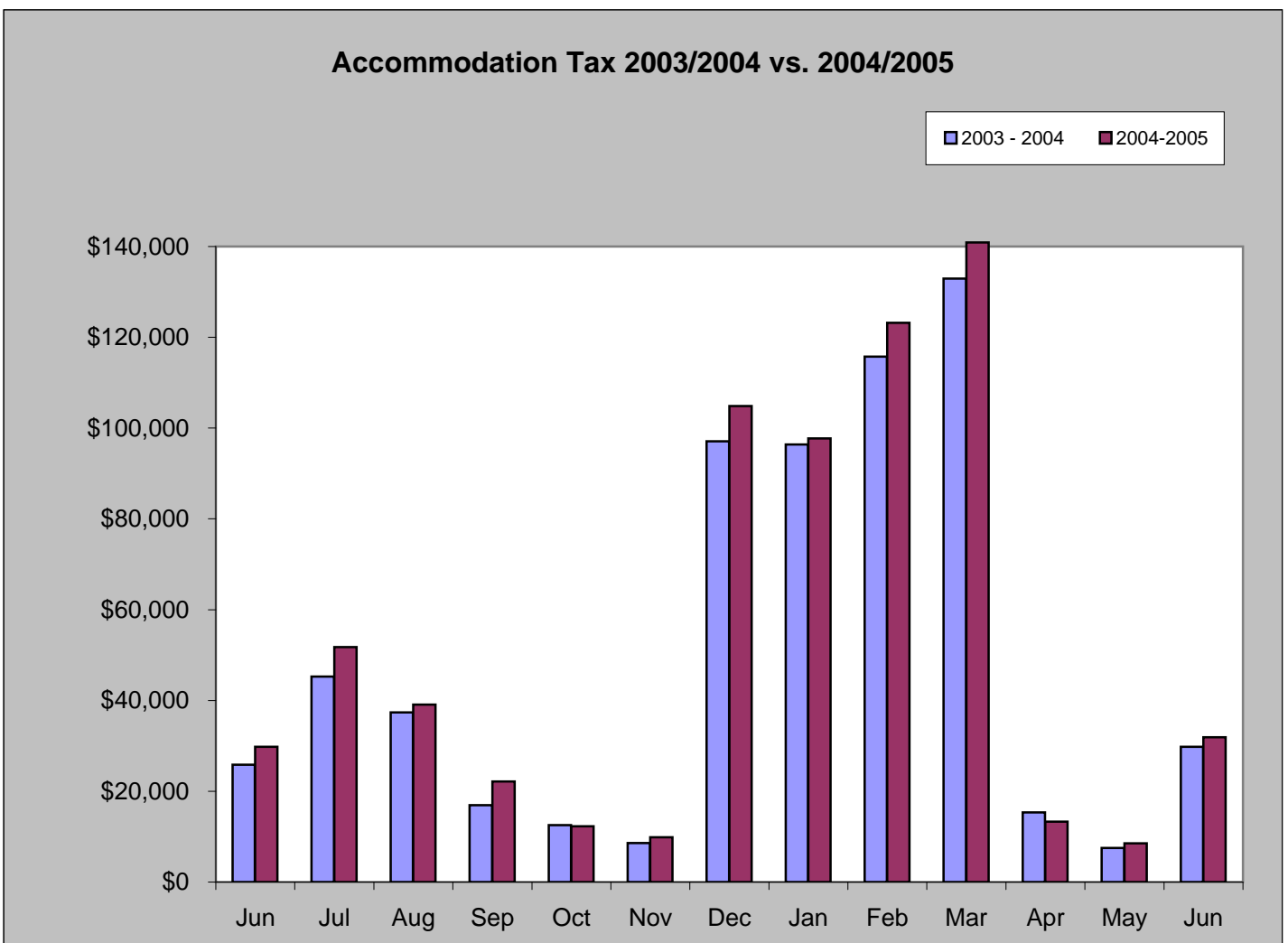


# Accommodation Tax

June 2005 accommodation tax increased 6.96% from June 2004. Year-to-date, accommodation tax collections increased 4.50%

June 2005 Accommodation Tax	June 2004 Accommodation Tax	% increase/decrease
\$31,883	\$29,808	6.96%

Accommodation Tax Year-to-date	Accommodation Tax January-June 2004	% increase/decrease
\$415,603	\$397,724	4.50%



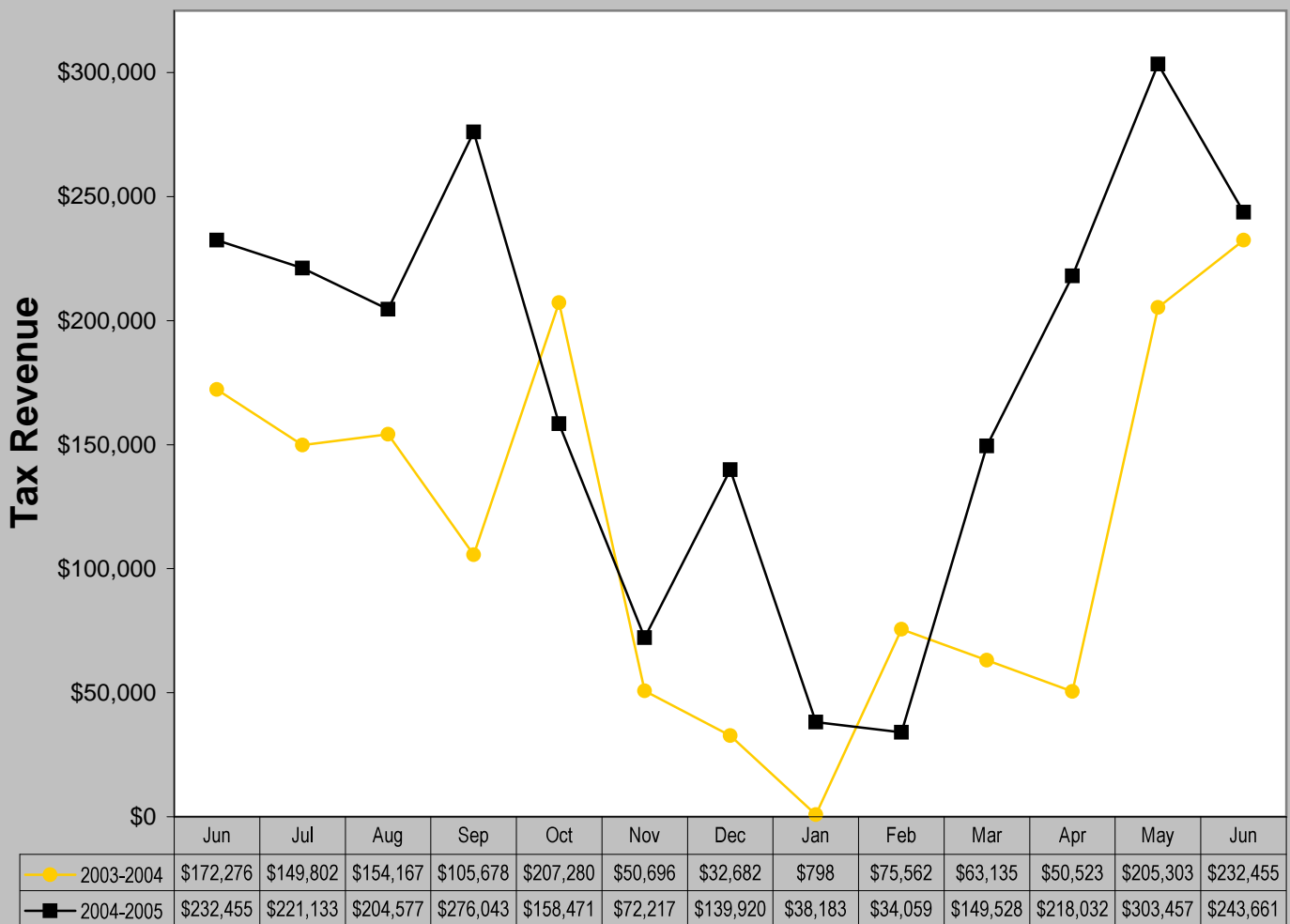
# Building Use Tax

Building Use Tax collections increased 4.82% from June 2004. Year-to-date, building use tax collections increased 57.21%.

June 2005 Building Use Tax	June 2004 Building Use Tax	% increase/decrease
\$243,661	\$232,455	4.82%

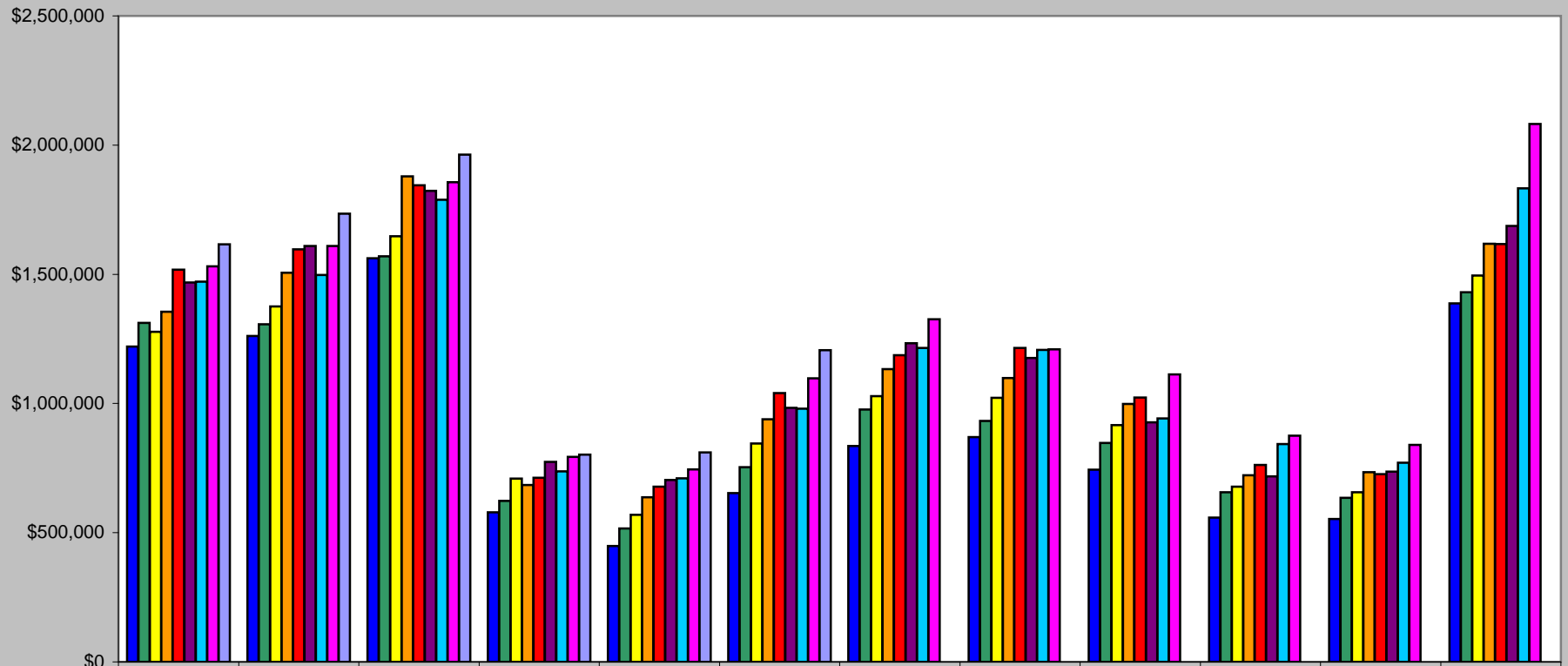
Building Use Tax Year-to-date	Building Use Tax January-June 2004	% increase/decrease
\$986,920	\$627,776	57.21%

### Building Use Tax - 2003/2004 vs. 2004/2005



## Historical Sales Tax Data

### Sales Tax Totals - 1997 to 2005



	January	February	March	April	May	June	July	August	September	October	November	December
■ 1997	\$1,219,831	\$1,261,490	\$1,562,166	\$579,050	\$448,400	\$653,333	\$835,532	\$869,539	\$743,613	\$558,375	\$553,579	\$1,387,412
■ 1998	\$1,312,107	\$1,306,179	\$1,569,306	\$623,003	\$516,115	\$753,943	\$976,649	\$932,296	\$847,365	\$656,052	\$635,383	\$1,430,670
■ 1999	\$1,277,195	\$1,375,120	\$1,647,187	\$709,777	\$568,771	\$844,830	\$1,028,270	\$1,021,558	\$916,329	\$677,995	\$656,063	\$1,495,712
■ 2000	\$1,355,249	\$1,505,684	\$1,879,557	\$684,244	\$637,578	\$939,334	\$1,133,251	\$1,098,829	\$998,295	\$722,617	\$734,644	\$1,617,798
■ 2001	\$1,517,372	\$1,596,296	\$1,844,411	\$712,155	\$678,521	\$1,040,565	\$1,186,620	\$1,214,665	\$1,023,069	\$762,275	\$726,706	\$1,617,531
■ 2002	\$1,468,242	\$1,609,764	\$1,822,635	\$774,194	\$704,180	\$983,138	\$1,233,795	\$1,175,637	\$927,574	\$718,161	\$736,832	\$1,687,211
■ 2003	\$1,471,061	\$1,497,398	\$1,788,181	\$737,652	\$710,214	\$979,873	\$1,215,159	\$1,207,373	\$942,596	\$842,980	\$770,632	\$1,833,111
■ 2004	\$1,530,388	\$1,609,507	\$1,855,895	\$793,602	\$744,456	\$1,097,678	\$1,325,797	\$1,209,657	\$1,112,790	\$875,854	\$839,590	\$2,081,777
■ 2005	\$1,616,509	\$1,734,373	\$1,962,829	\$801,967	\$811,185	\$1,206,349						

This document was created with Win2PDF available at <http://www.daneprairie.com>.  
The unregistered version of Win2PDF is for evaluation or non-commercial use only.