



June 2006 Sales, Use, and Accommodation Tax Report

The City of Steamboat Springs Sales, Use, and Accommodation Tax Report examines tax collections for the month of June 2006.

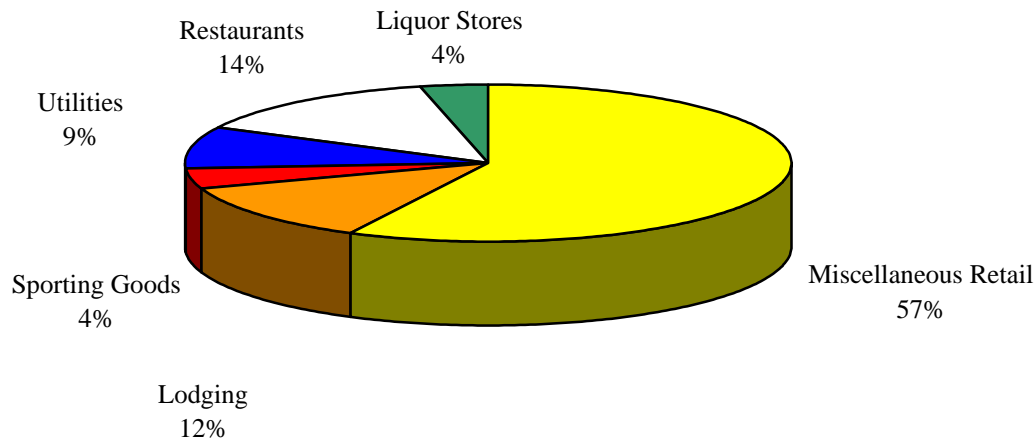
Sales Tax

June 2006 sales tax collections increased 10.88% from sales tax collections for the month of June 2005. Year-to-date, sales tax collections increased 12.73%.

Sales Tax June 2006 *	Sales Tax June 2005	% increase/decrease over last year
\$1,354,253	\$1,221,338	10.88%

Sales Tax Year-to-date	Sales Tax January-June 2005	% increase/decrease over last year
\$9,197,917	\$8,158,893	12.73%

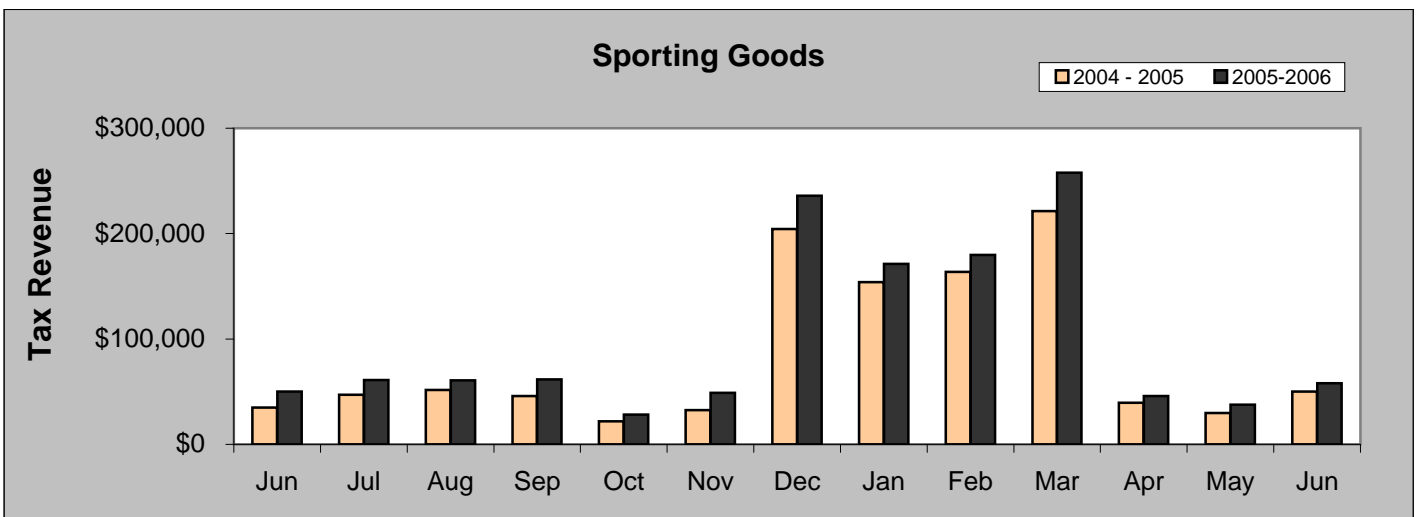
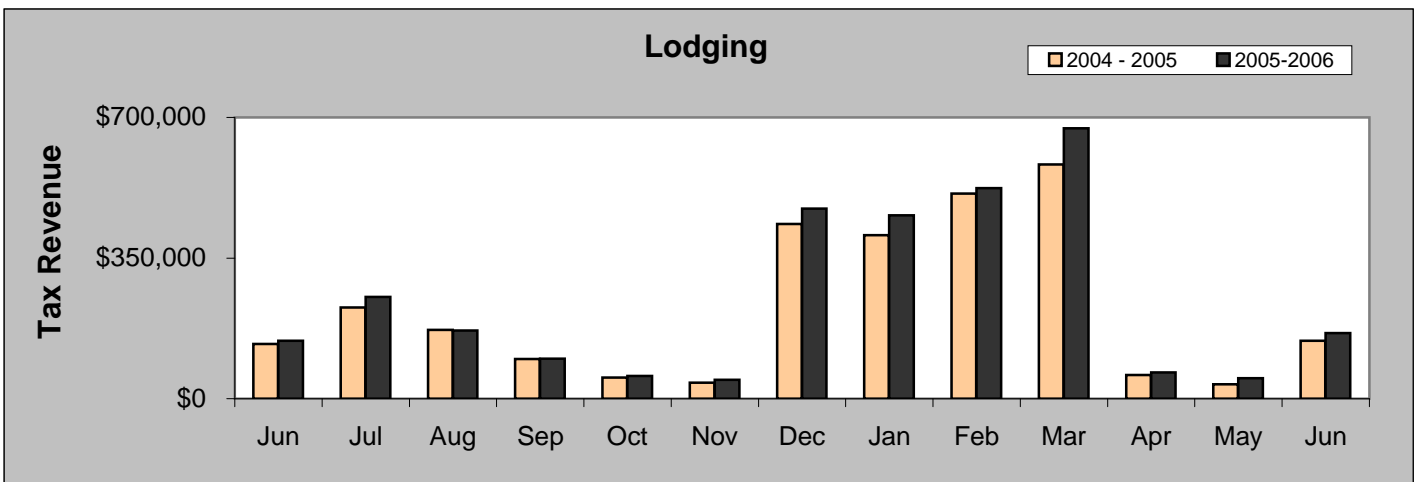
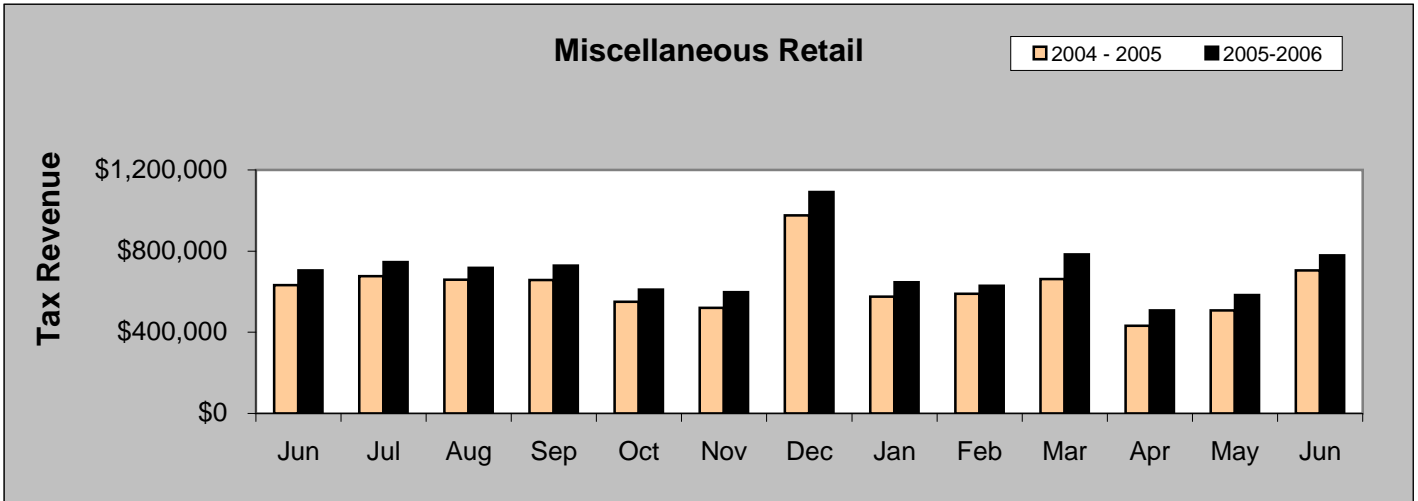
June 2006 Sales Categories

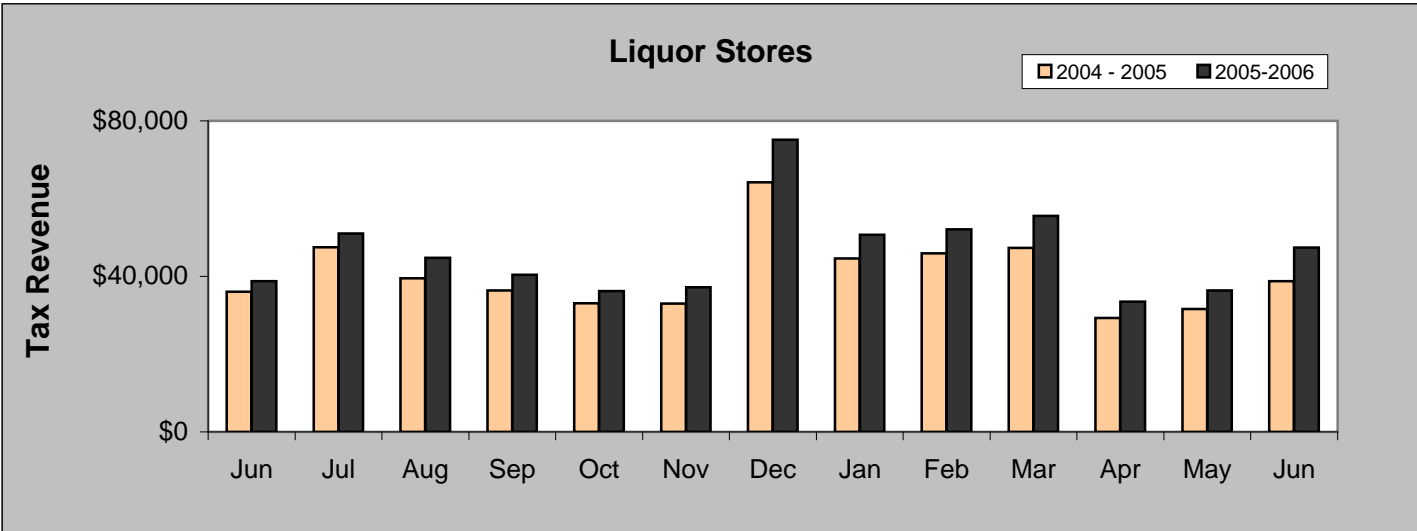
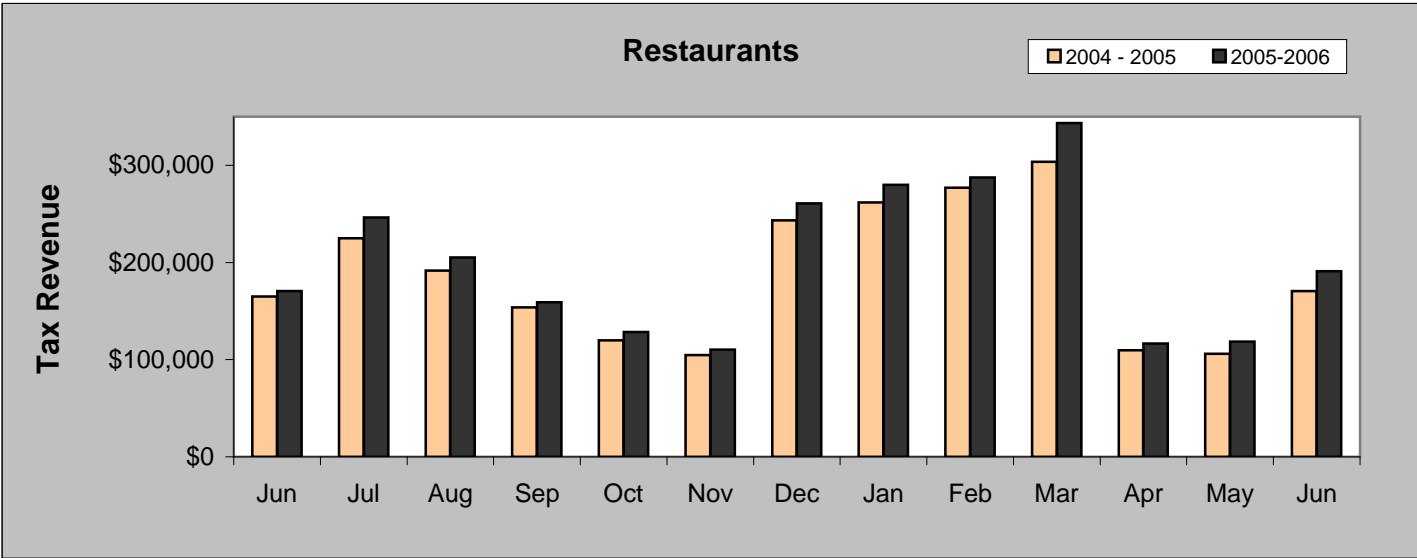
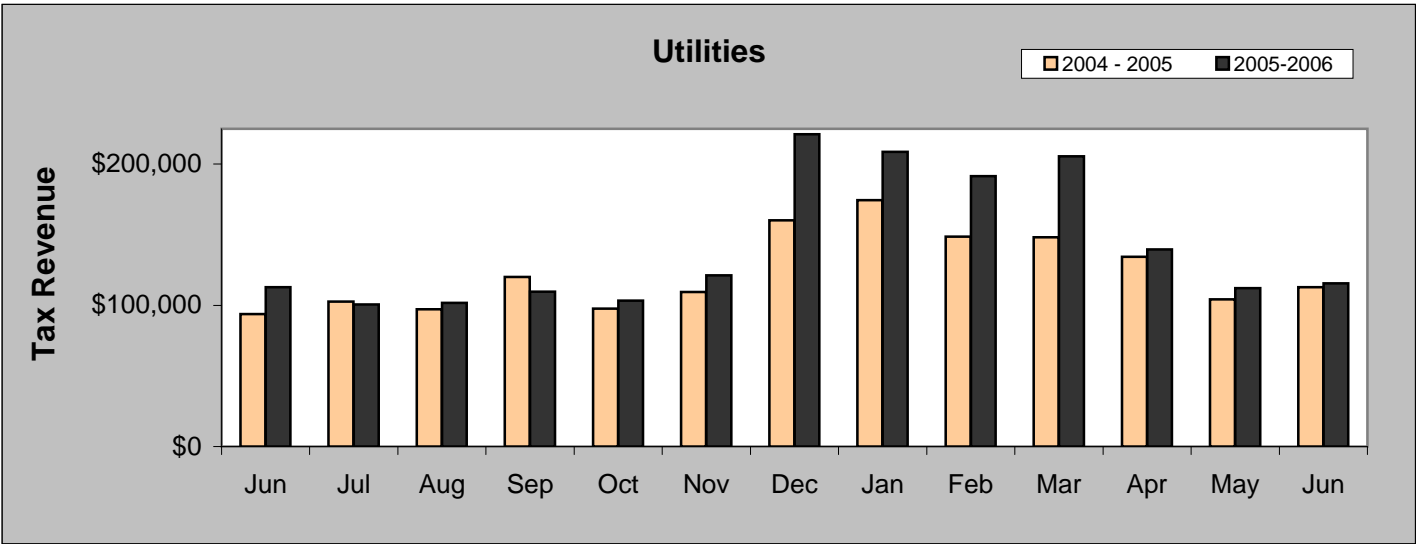


* Includes amounts that will accrue to the Urban Renewal Authority.

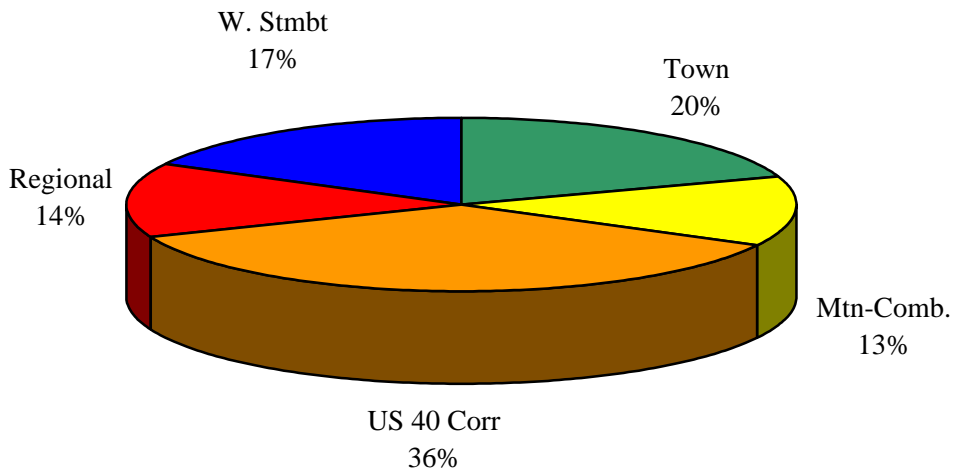
JUNE COMPARISON BY CATEGORY

	2005	2006	%
Miscellaneous Retail	\$704,913	\$778,809	10.48%
Lodging	\$144,385	\$163,547	13.27%
Sporting Goods	\$50,033	\$58,063	16.05%
Utilities	\$112,818	\$115,474	2.35%
Restaurants	\$170,426	\$190,951	12.04%
Liquor Stores	\$38,763	\$47,410	22.31%

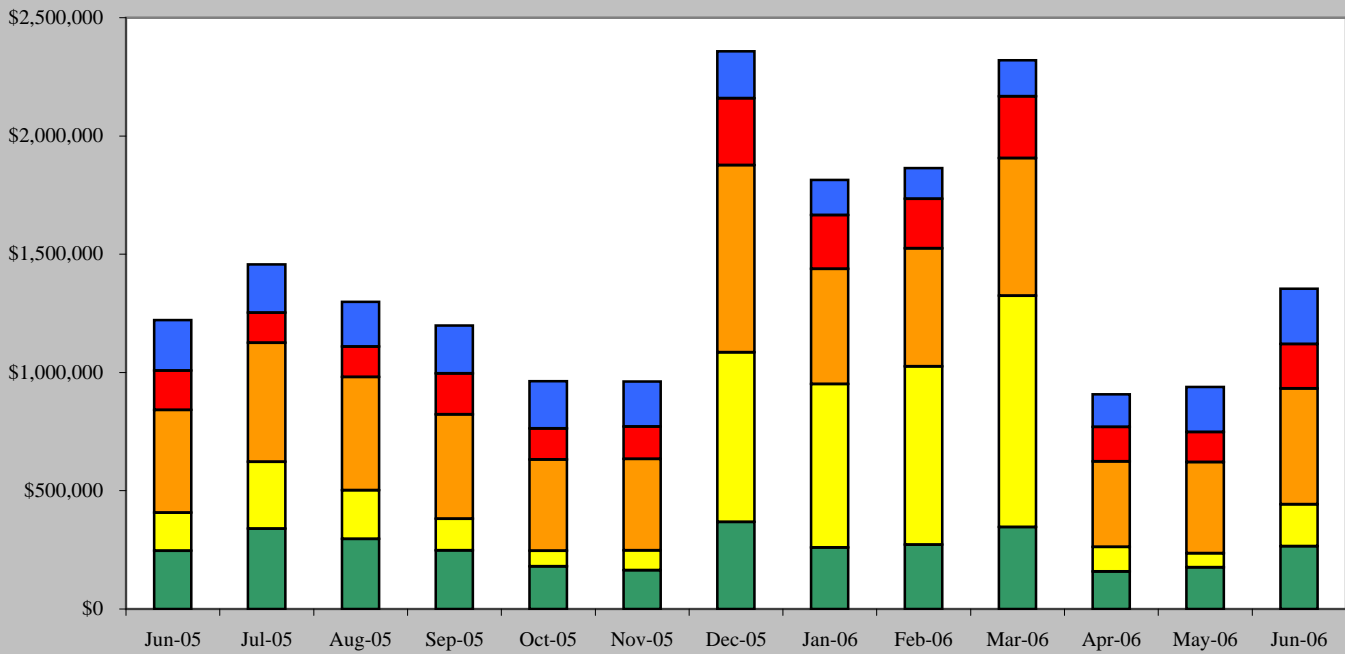




June 2006 Sales Tax By Area



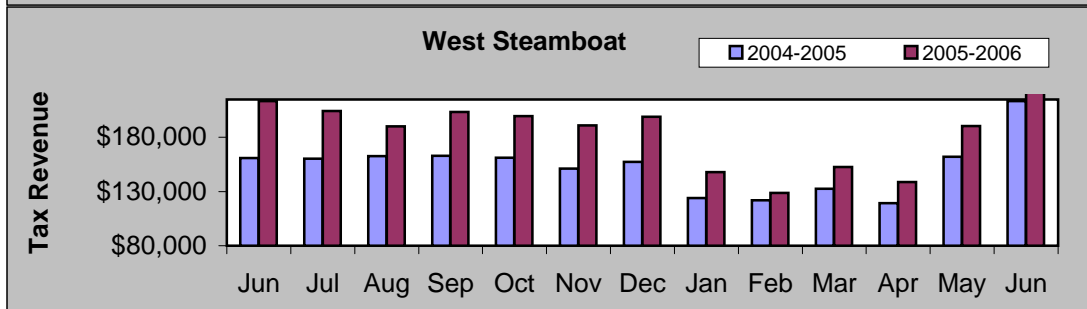
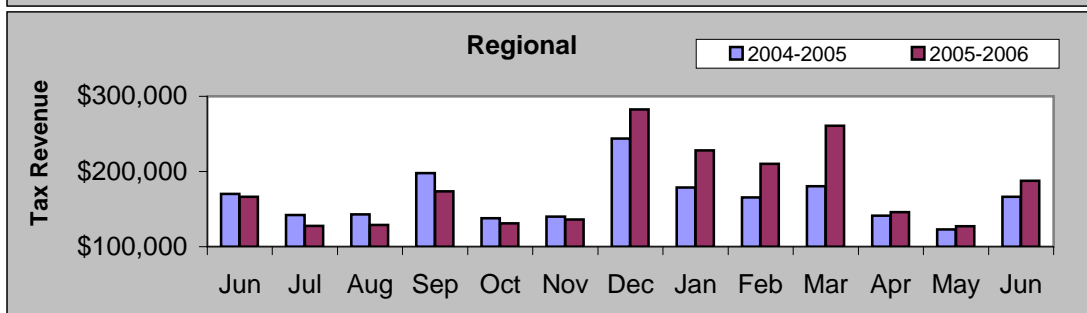
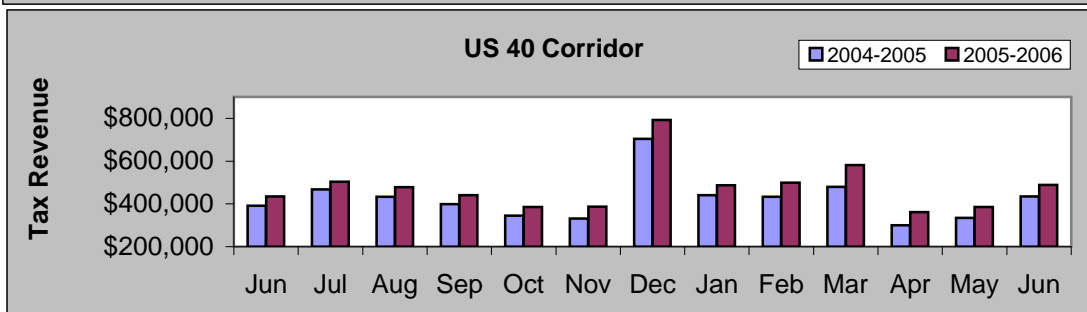
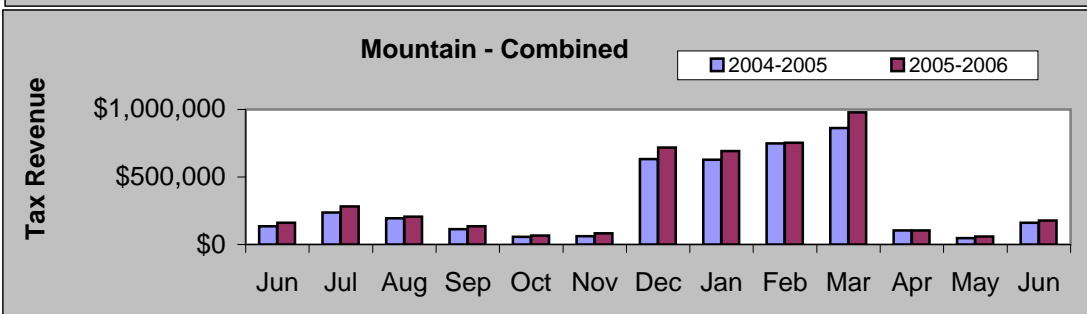
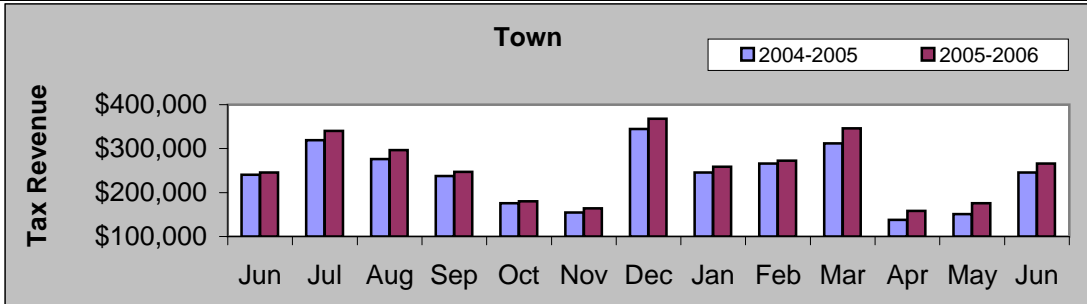
June 2005 - June 2006



	Jun-05	Jul-05	Aug-05	Sep-05	Oct-05	Nov-05	Dec-05	Jan-06	Feb-06	Mar-06	Apr-06	May-06	Jun-06
■ W. Stmbt	\$213,523	\$204,399	\$190,228	\$203,495	\$199,652	\$191,065	\$199,037	\$147,989	\$128,858	\$152,562	\$138,769	\$190,516	\$234,412
■ Regional	\$166,425	\$127,786	\$128,868	\$173,488	\$131,105	\$136,033	\$282,399	\$228,175	\$210,189	\$260,969	\$145,953	\$127,445	\$187,627
■ US 40 Corr	\$434,134	\$502,922	\$478,196	\$440,747	\$386,051	\$386,309	\$791,603	\$486,904	\$498,747	\$581,146	\$361,124	\$386,084	\$489,258
■ Mtn-Comb.	\$161,301	\$282,197	\$205,746	\$134,280	\$66,105	\$84,000	\$717,468	\$691,569	\$753,250	\$978,983	\$104,106	\$59,207	\$177,180
■ Town	\$245,955	\$340,148	\$296,263	\$246,985	\$179,819	\$164,144	\$367,852	\$259,090	\$272,537	\$345,756	\$158,193	\$175,543	\$265,776

JUNE COMPARISON BY AREA

Area	2005	2006	%
Town	\$245,955	\$265,776	8.06%
Mountain - Combined	\$161,301	\$177,180	9.84%
US 40 Corridor	\$434,134	\$489,258	12.70%
Regional	\$166,425	\$187,627	12.74%
West Steamboat	\$213,523	\$234,412	9.78%

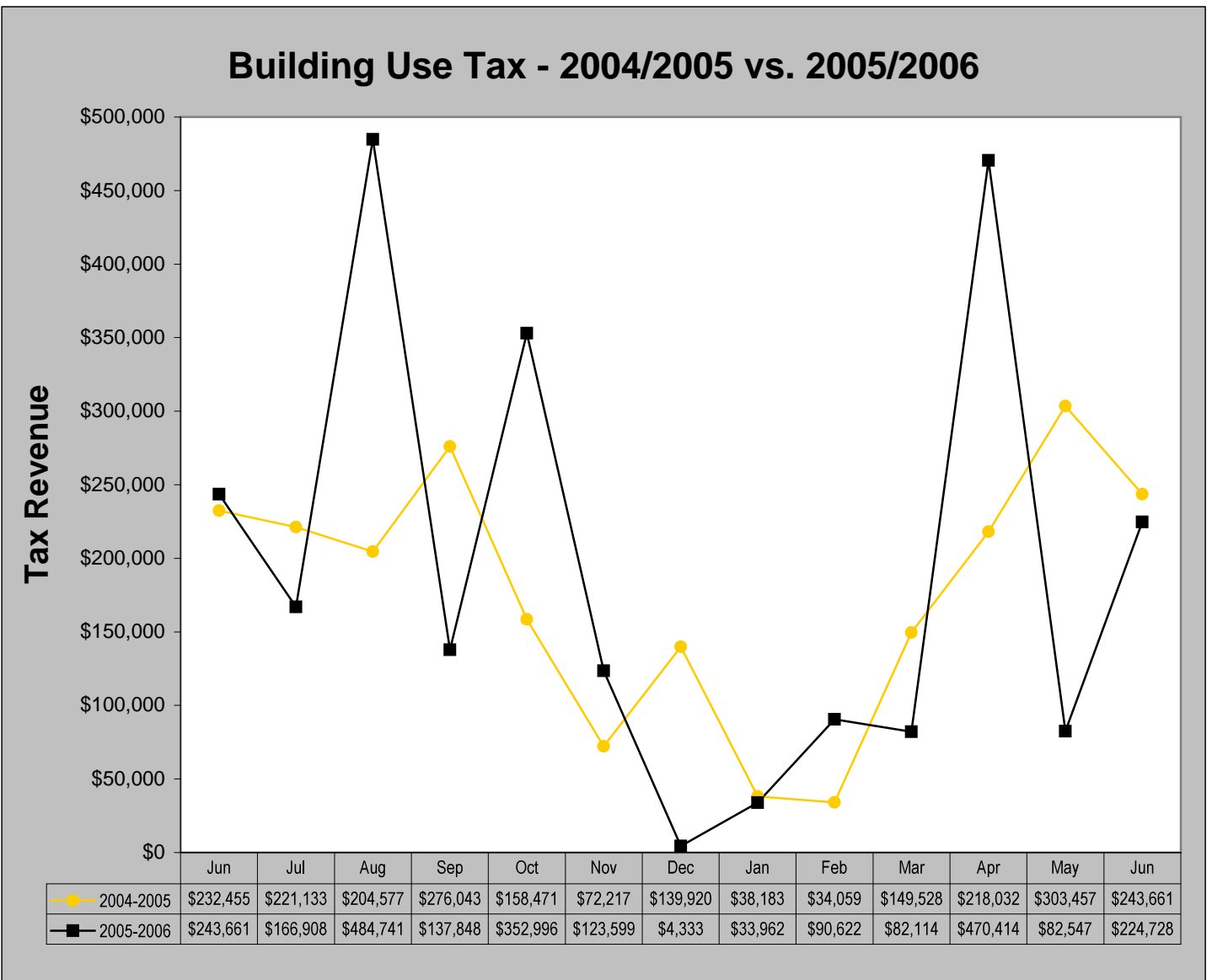


Building Use Tax

June 2006 Building Use Tax collections decreased 7.77% from June 2005. Year-to-date, building use tax collections decreased 0.26%.

June 2006 Building Use Tax	June 2005 Building Use Tax	% increase/decrease
\$224,728	\$243,661	-7.77%

Building Use Tax Year-to-date	Building Use Tax January-June 2005	% increase/decrease
\$984,387	\$986,920	-0.26%

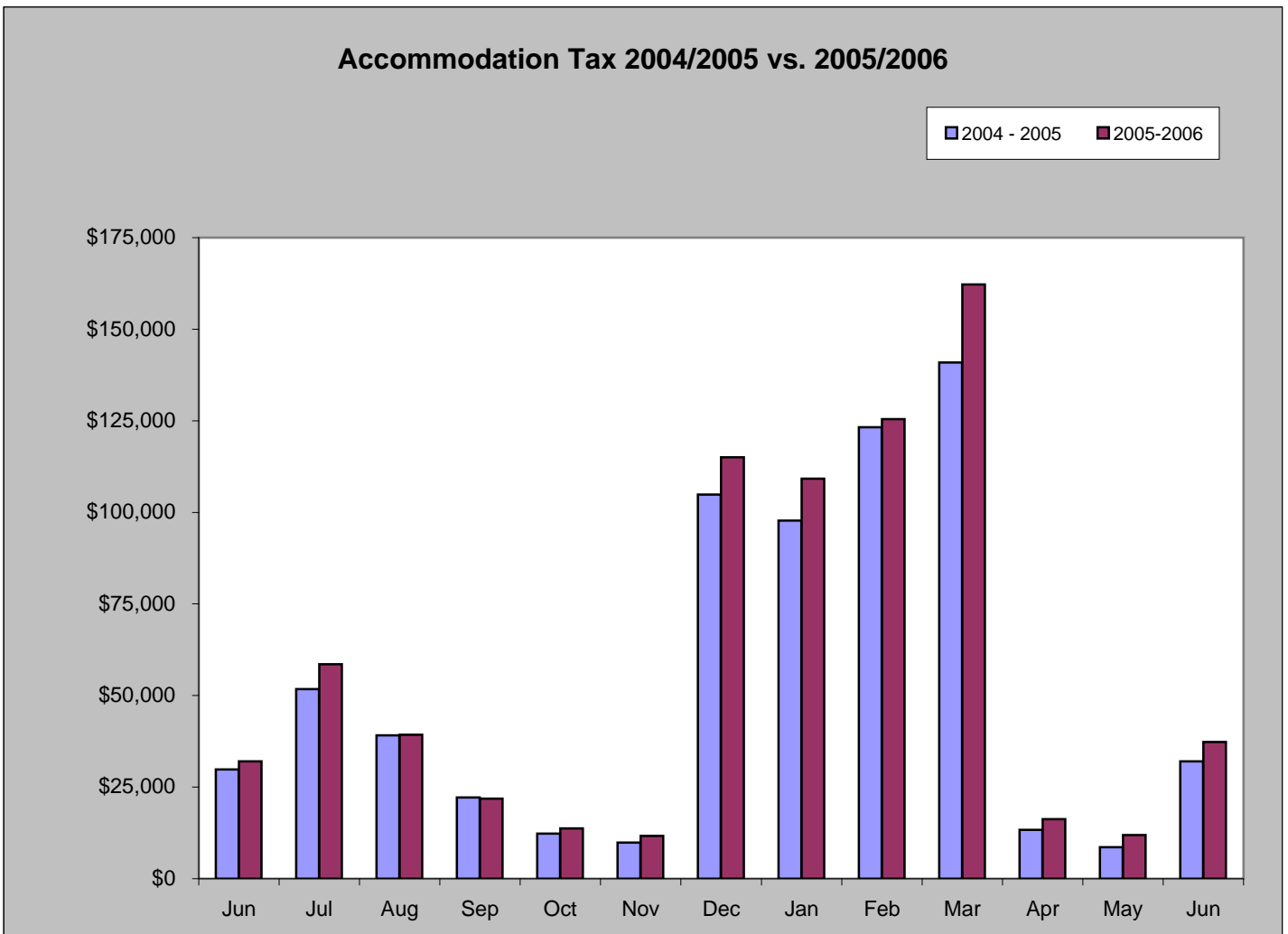


Accommodation Tax

June 2006 accommodation tax increased 16.56% from June 2005. Year-to-date, accommodation tax collection increased 11.18%.

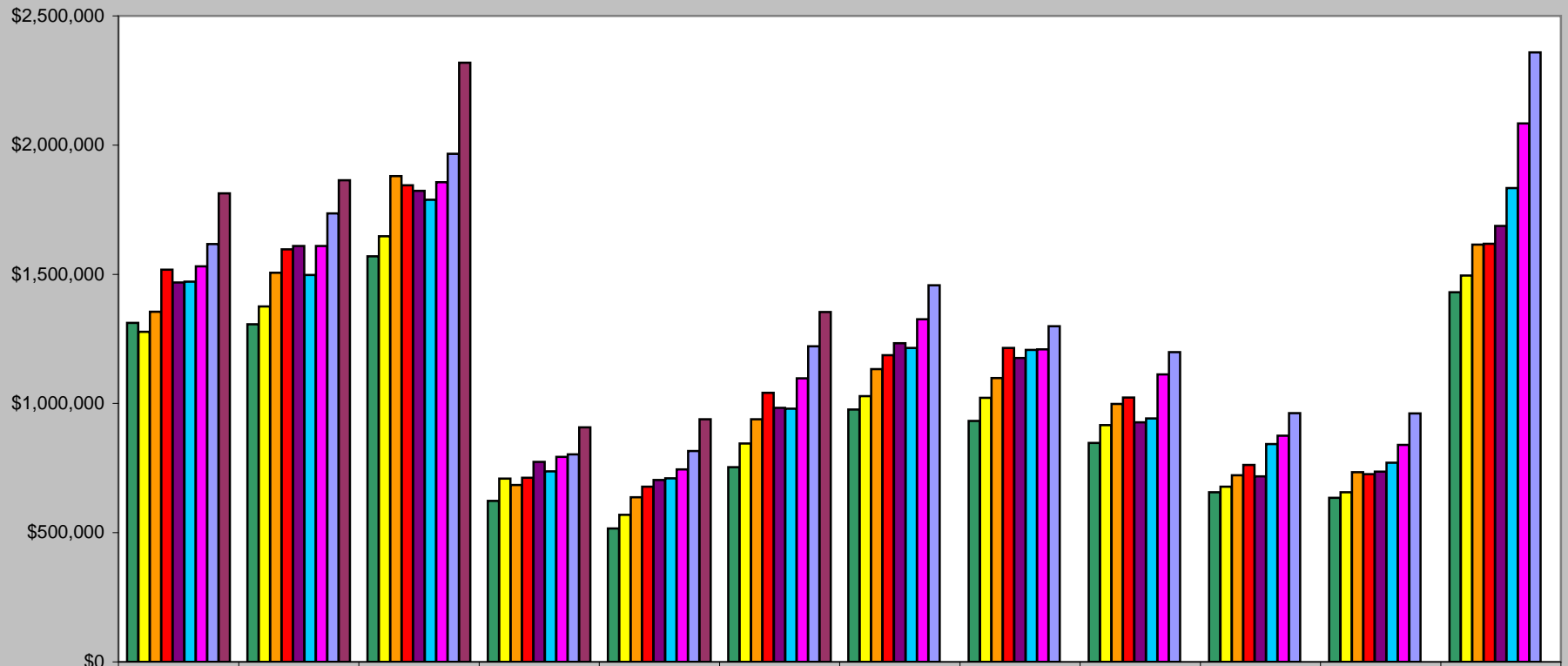
June 2006 Accommodation Tax	June 2005 Accommodation Tax	% increase/decrease
\$37,353	\$32,045	16.56%

Accommodation Tax Year-to-date	Accommodation Tax January-June 2005	% increase/decrease
\$462,337	\$415,829	11.18%



Historical Sales Tax Data

Sales Tax Totals - 1998 to 2006



	January	February	March	April	May	June	July	August	September	October	November	December
■ 1998	\$1,312,107	\$1,306,179	\$1,569,306	\$623,003	\$516,115	\$753,943	\$976,649	\$932,296	\$847,365	\$656,052	\$635,383	\$1,430,670
■ 1999	\$1,277,195	\$1,375,120	\$1,647,187	\$709,777	\$568,771	\$844,830	\$1,028,270	\$1,021,558	\$916,329	\$677,995	\$656,063	\$1,495,712
■ 2000	\$1,355,249	\$1,505,684	\$1,879,789	\$684,244	\$637,578	\$939,481	\$1,133,251	\$1,098,829	\$998,420	\$722,617	\$734,644	\$1,615,197
■ 2001	\$1,517,372	\$1,596,296	\$1,844,737	\$712,155	\$678,521	\$1,040,995	\$1,186,620	\$1,214,665	\$1,023,255	\$762,275	\$726,706	\$1,618,152
■ 2002	\$1,468,242	\$1,609,764	\$1,822,635	\$774,194	\$704,180	\$983,139	\$1,233,805	\$1,175,667	\$927,575	\$718,161	\$736,832	\$1,687,541
■ 2003	\$1,471,061	\$1,497,398	\$1,788,181	\$737,652	\$710,214	\$979,861	\$1,215,159	\$1,207,373	\$942,596	\$842,980	\$770,632	\$1,833,477
■ 2004	\$1,530,388	\$1,609,507	\$1,855,895	\$793,619	\$744,456	\$1,097,622	\$1,325,813	\$1,209,657	\$1,112,790	\$875,854	\$839,590	\$2,083,468
■ 2005	\$1,617,152	\$1,735,244	\$1,965,875	\$803,359	\$815,925	\$1,221,338	\$1,457,452	\$1,299,301	\$1,198,995	\$962,731	\$961,551	\$2,358,359
■ 2006	\$1,813,727	\$1,863,581	\$2,319,416	\$908,145	\$938,795	\$1,354,253						

This document was created with Win2PDF available at <http://www.daneprairie.com>.
The unregistered version of Win2PDF is for evaluation or non-commercial use only.