



July 2006 Sales, Use, and Accommodation Tax Report

The City of Steamboat Springs Sales, Use, and Accommodation Tax Report examines tax collections for the month of July 2006.

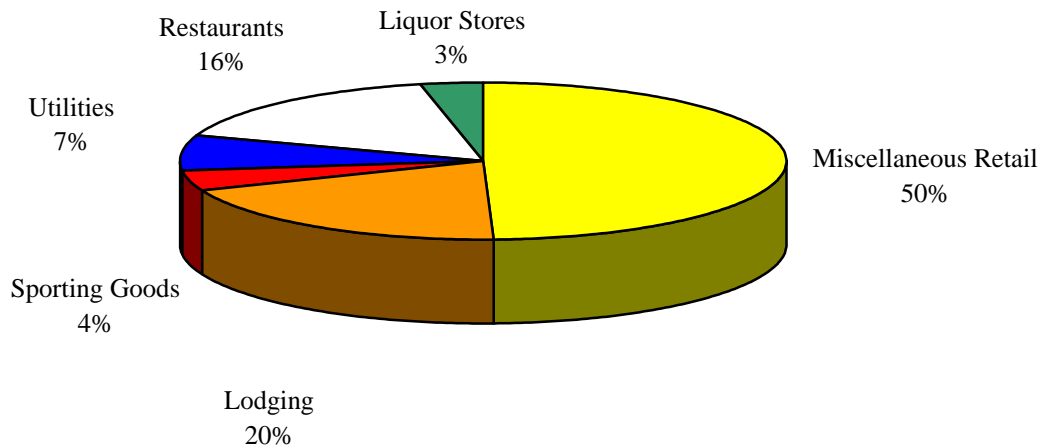
Sales Tax

July 2006 sales tax collections increased 9.94% from sales tax collections for the month of July 2005. Year-to-date, sales tax collections increased 12.50%.

Sales Tax July 2006 *	Sales Tax July 2005	% increase/decrease over last year
\$1,602,302	\$1,457,453	9.94%

Sales Tax Year-to-date	Sales Tax January-July 2005	% increase/decrease over last year
\$10,823,369	\$9,620,812	12.50%

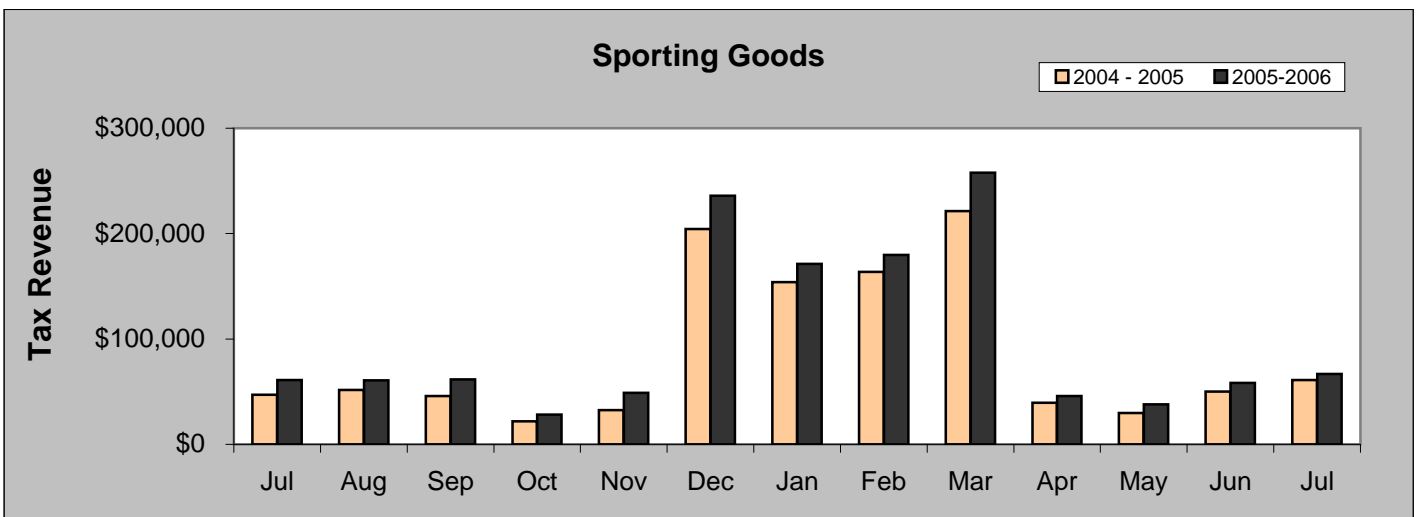
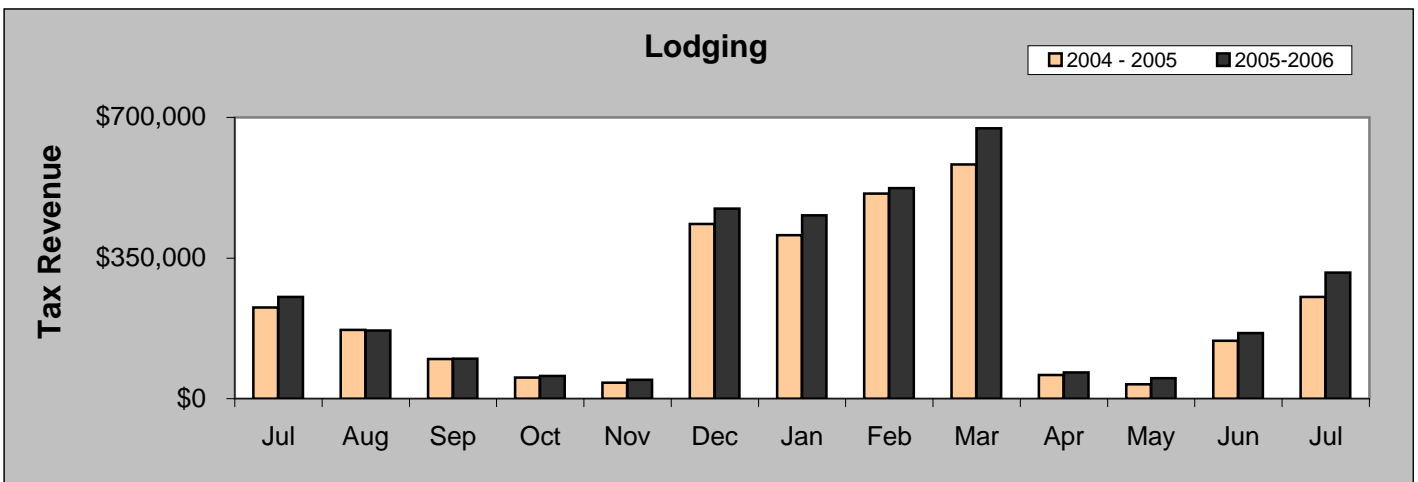
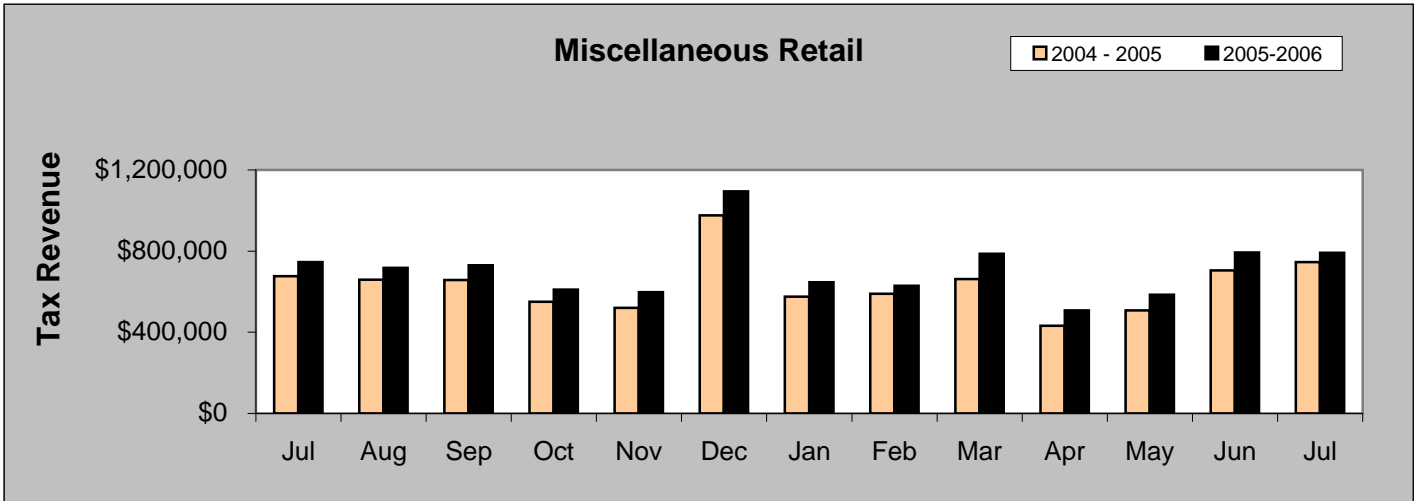
July 2006 Sales Categories

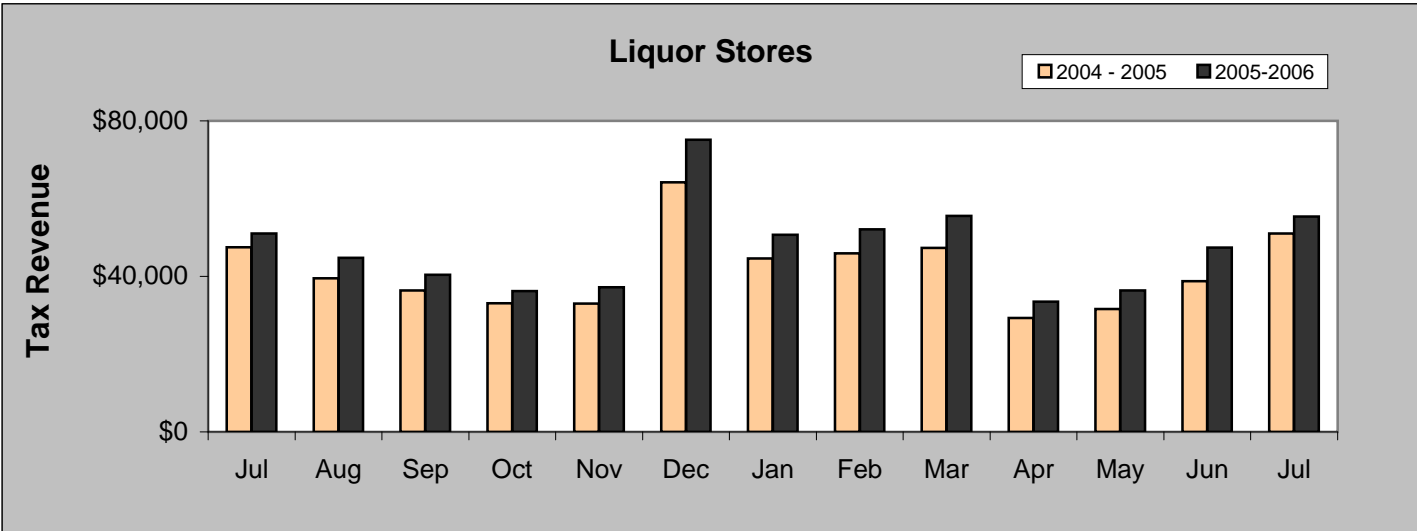
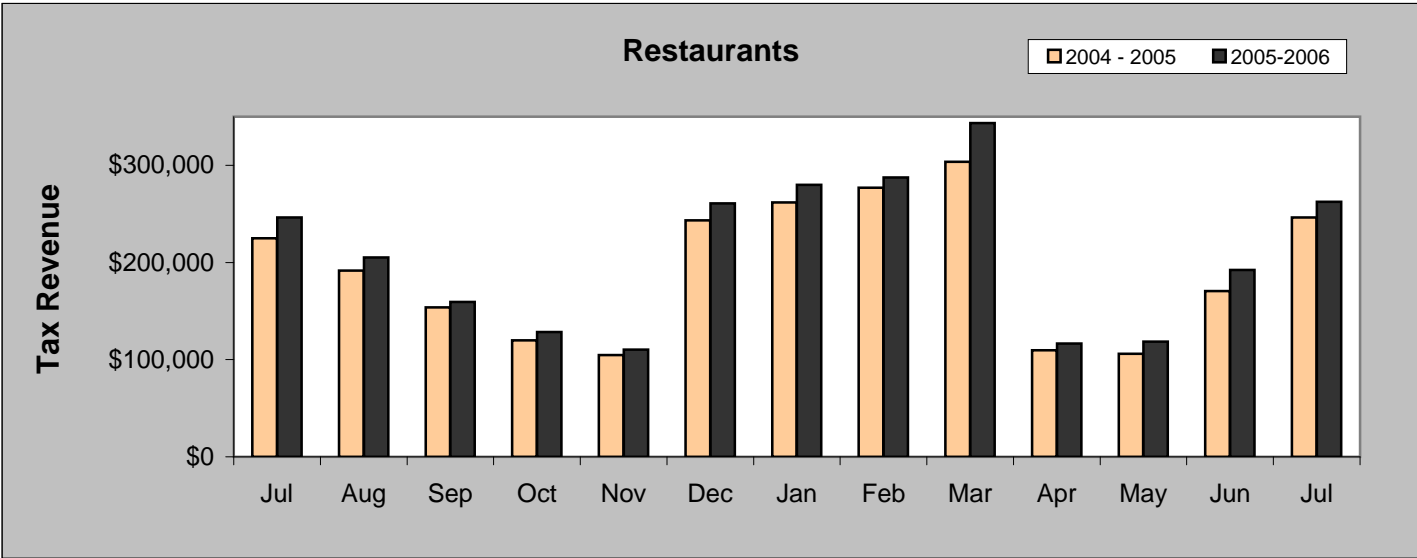
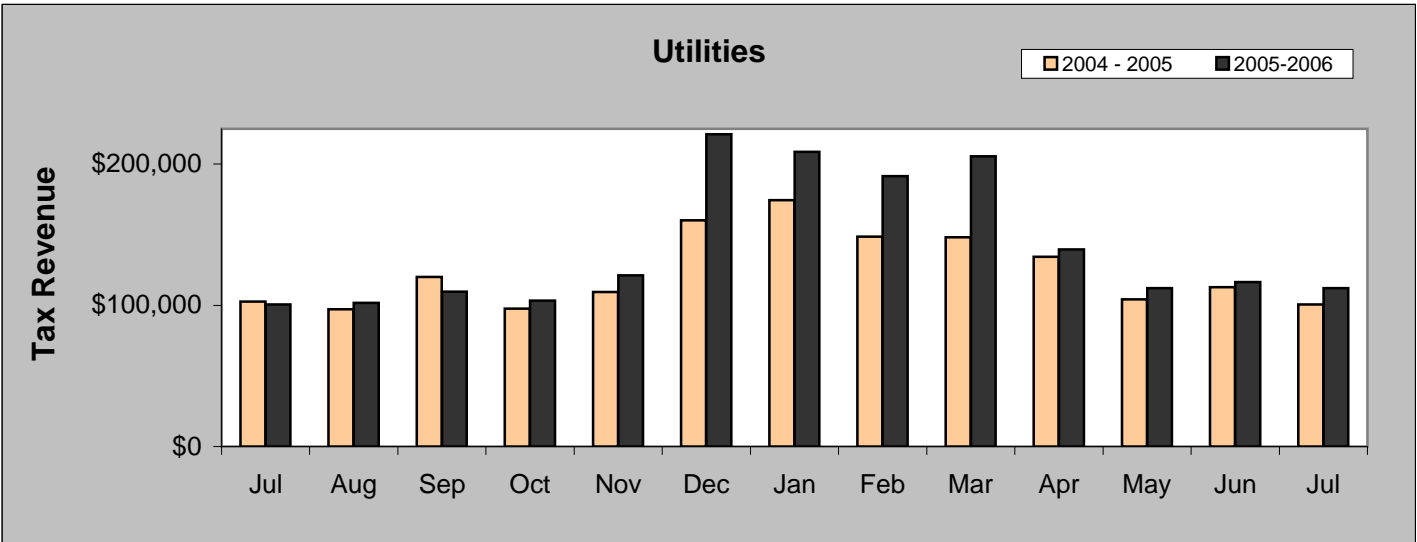


* Includes amounts that will accrue to the Urban Renewal Authority.

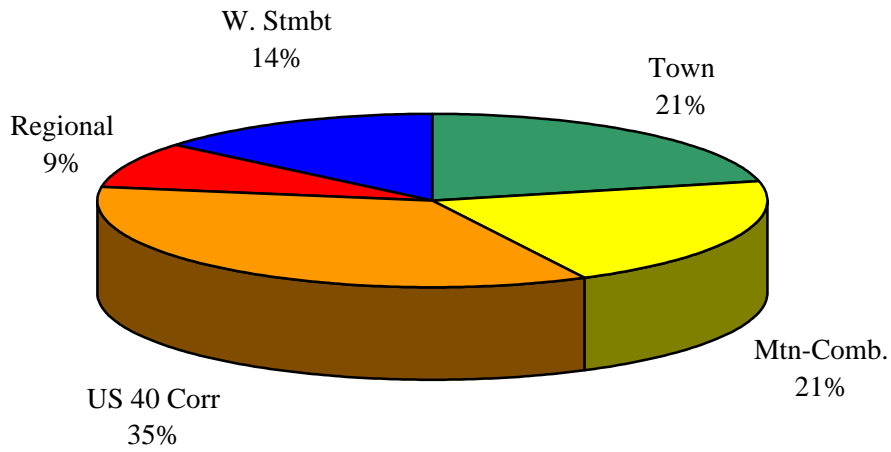
JULY COMPARISON BY CATEGORY

	2005	2006	%
Miscellaneous Retail	\$745,161	\$791,813	6.26%
Lodging	\$253,546	\$313,611	23.69%
Sporting Goods	\$60,889	\$66,695	9.54%
Utilities	\$100,703	\$112,271	11.49%
Restaurants	\$246,144	\$262,487	6.64%
Liquor Stores	\$51,013	\$55,427	8.65%

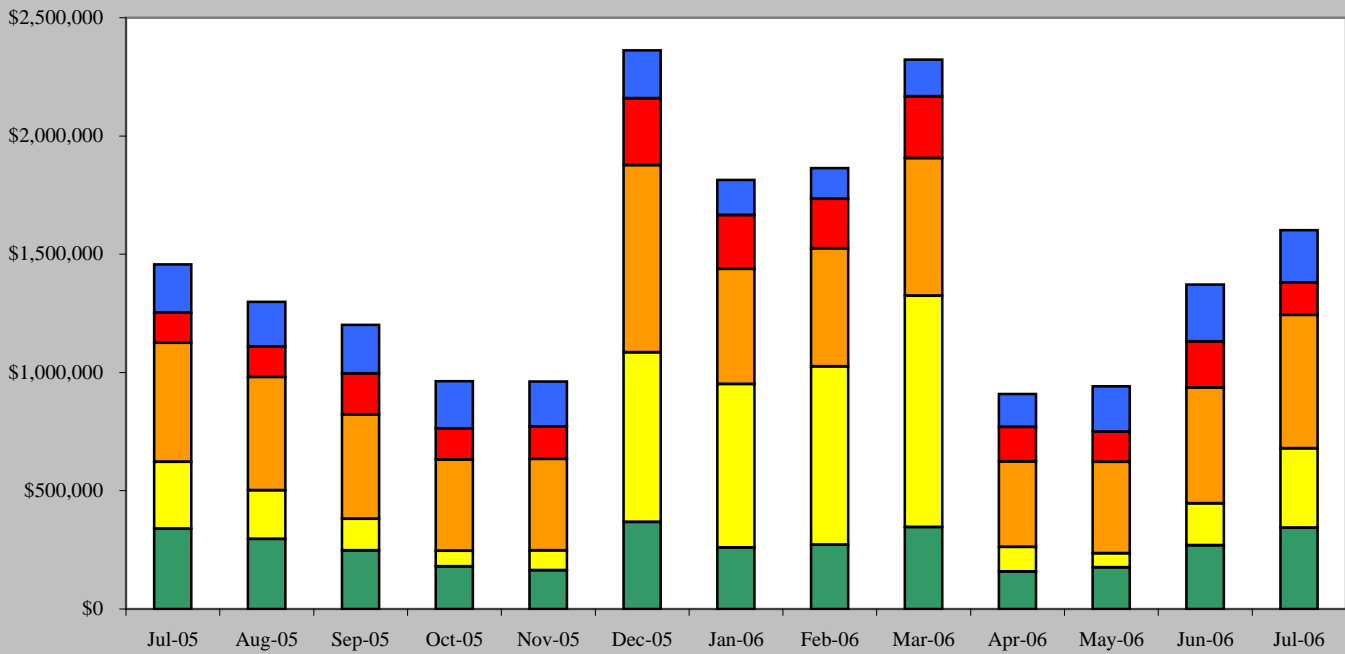




July 2006 Sales Tax By Area



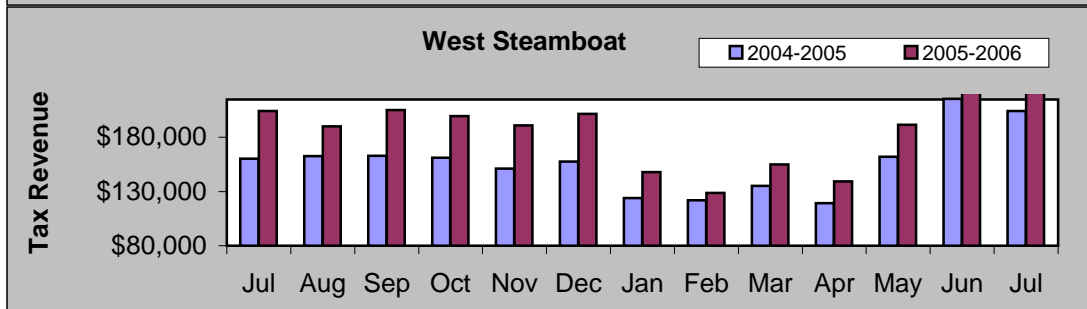
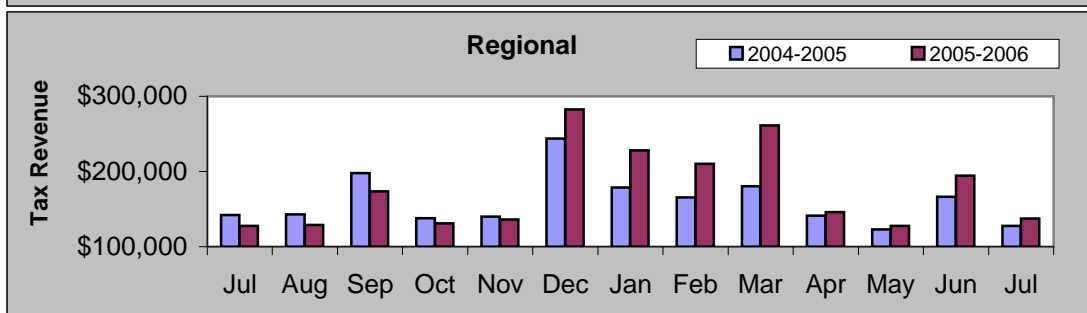
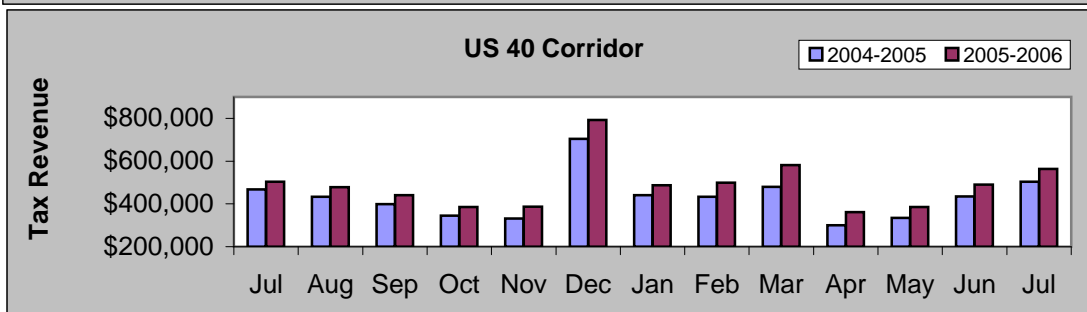
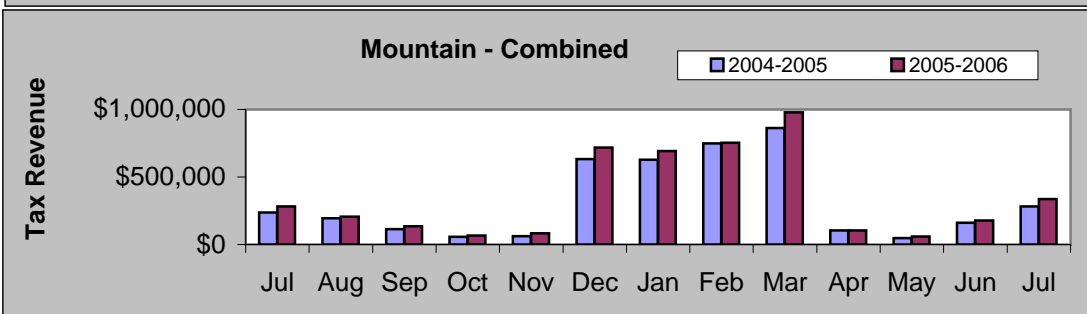
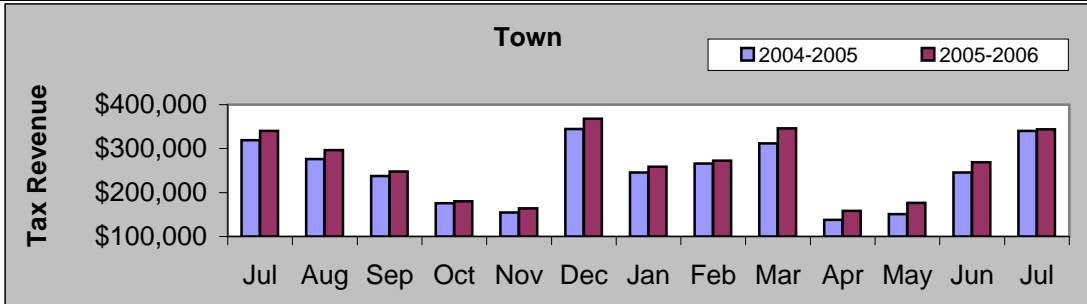
July 2005 - July 2006



	Jul-05	Aug-05	Sep-05	Oct-05	Nov-05	Dec-05	Jan-06	Feb-06	Mar-06	Apr-06	May-06	Jun-06	Jul-06
■ W. Stmbt	\$204,399	\$190,228	\$205,256	\$199,652	\$191,065	\$201,804	\$147,989	\$128,858	\$154,904	\$139,245	\$191,652	\$240,360	\$221,899
■ Regional	\$127,786	\$128,868	\$173,488	\$131,105	\$136,033	\$282,603	\$228,268	\$210,265	\$261,279	\$146,058	\$127,555	\$194,665	\$137,455
■ US 40 Corr	\$502,922	\$478,196	\$440,720	\$386,051	\$386,309	\$791,586	\$486,904	\$498,747	\$581,207	\$361,087	\$386,084	\$489,490	\$563,638
■ Mtn-Comb.	\$282,197	\$205,746	\$134,280	\$66,105	\$84,000	\$717,468	\$691,569	\$753,250	\$979,071	\$104,198	\$59,470	\$178,062	\$335,697
■ Town	\$340,148	\$296,263	\$247,530	\$179,819	\$164,144	\$367,876	\$259,090	\$272,537	\$345,983	\$158,172	\$176,210	\$268,838	\$343,613

JULY COMPARISON BY AREA

Area	2005	2006	%
Town	\$340,148	\$343,613	1.02%
Mountain - Combined	\$282,197	\$335,697	18.96%
US 40 Corridor	\$502,922	\$563,638	12.07%
Regional	\$127,786	\$137,455	7.57%
West Steamboat	\$204,399	\$221,899	8.56%

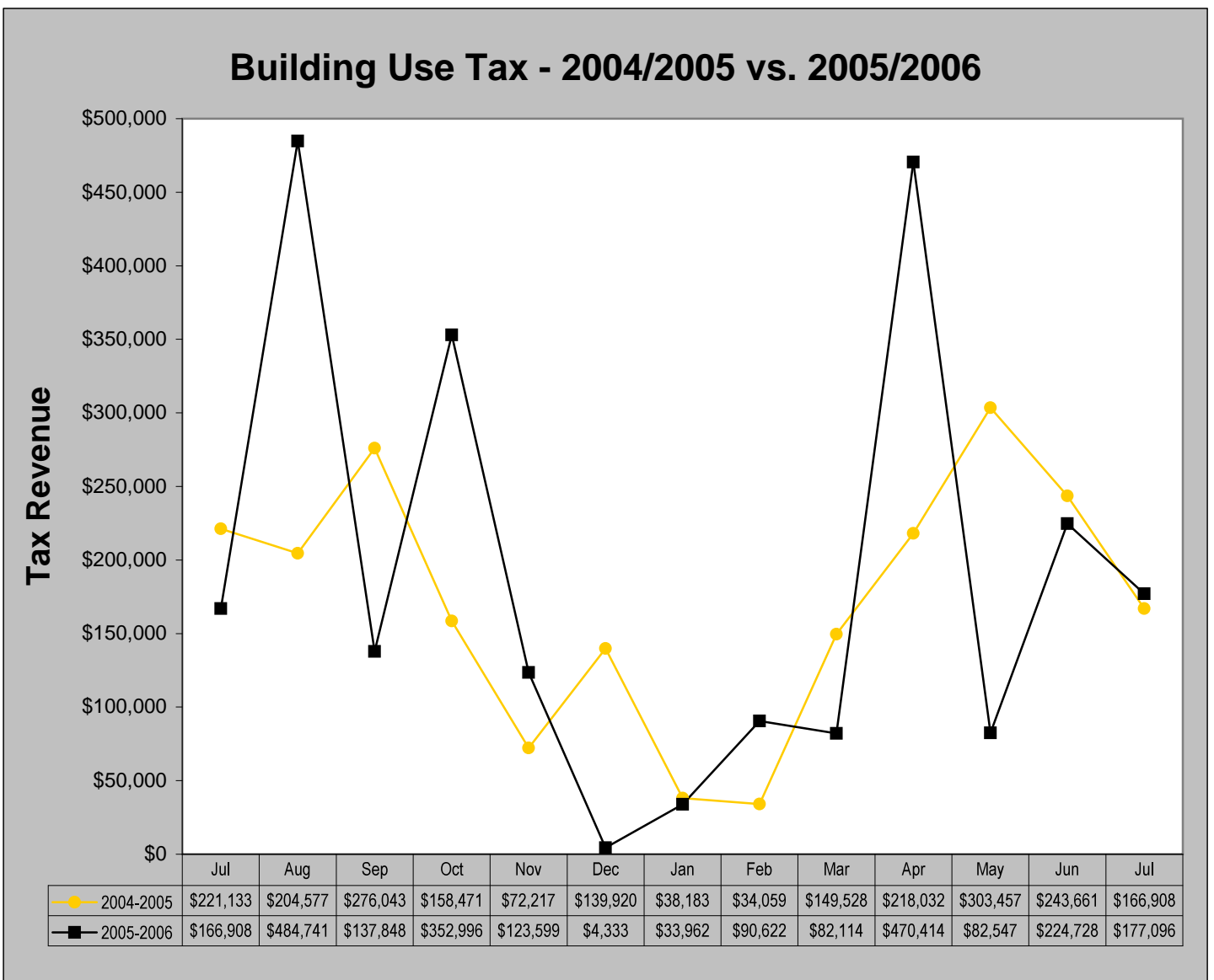


Building Use Tax

July 2006 Building Use Tax collections increased 6.10% from July 2005. Year-to-date, building use tax collections increased 0.66%.

July 2006 Building Use Tax	July 2005 Building Use Tax	% increase/decrease
\$177,096	\$166,908	6.10%

Building Use Tax Year-to-date	Building Use Tax January-July 2005	% increase/decrease
\$1,161,483	\$1,153,828	0.66%

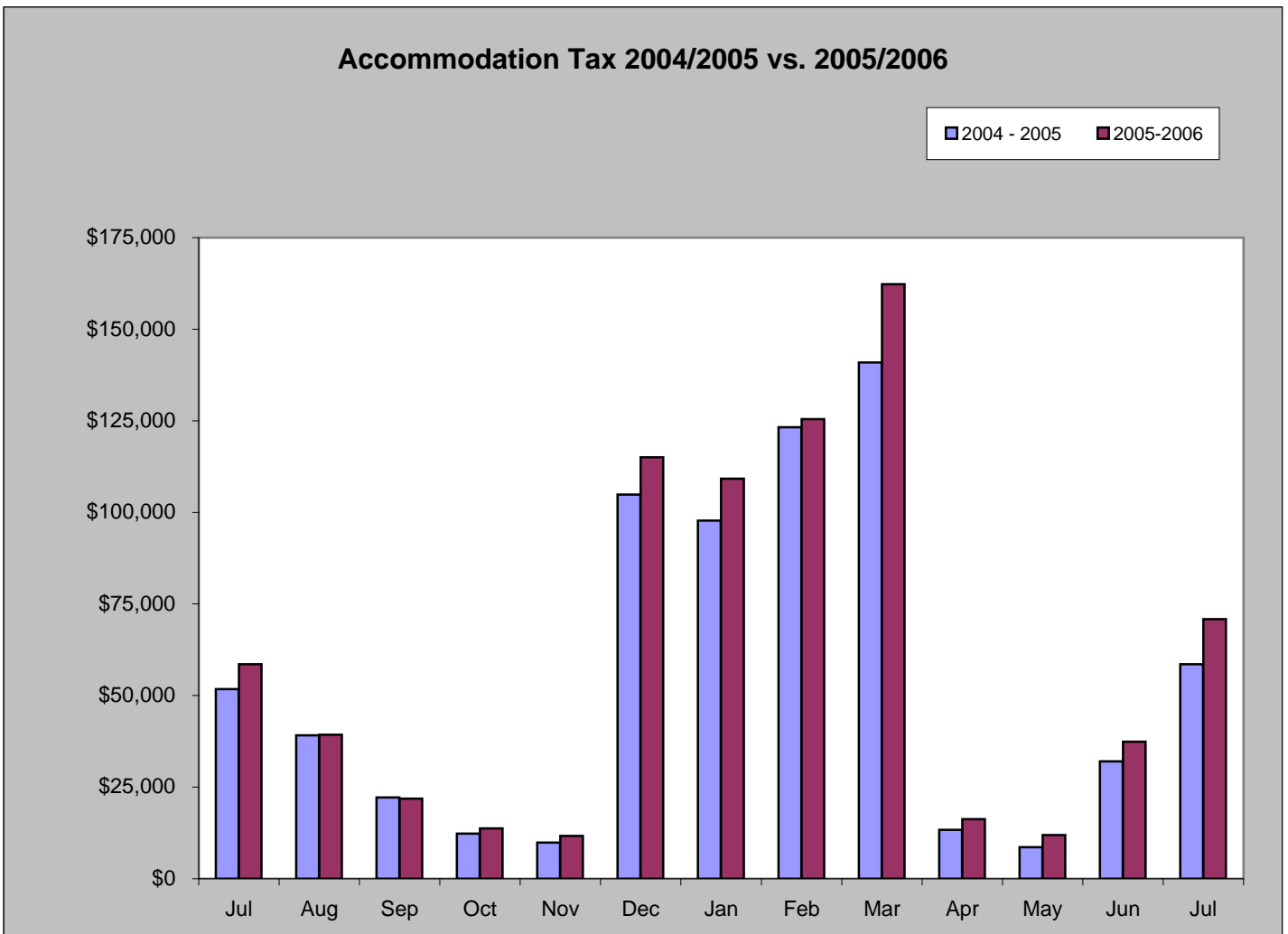


Accommodation Tax

July 2006 accommodation tax increased 21.04% from July 2005. Year-to-date, accommodation tax collection increased 12.41%.

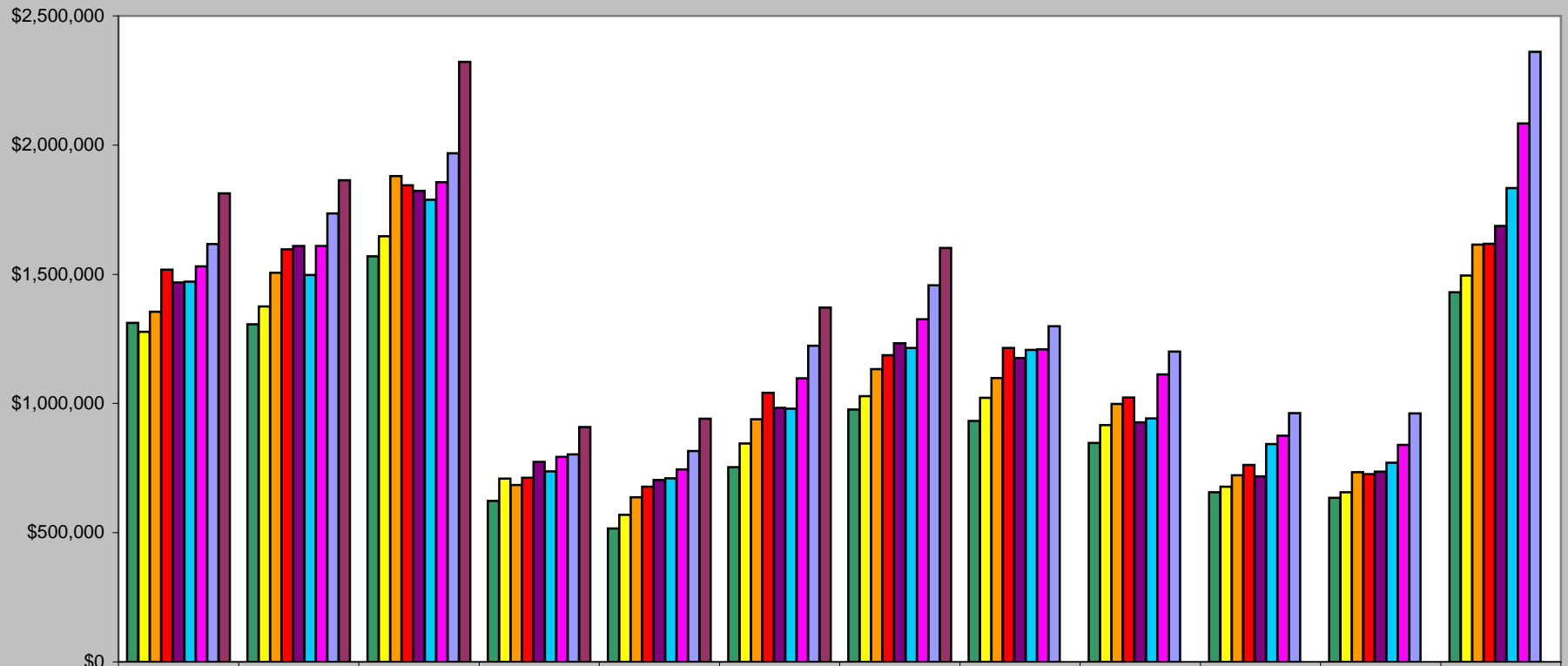
July 2006 Accommodation Tax	July 2005 Accommodation Tax	% increase/decrease
\$70,826	\$58,515	21.04%

Accommodation Tax Year-to-date	Accommodation Tax January-July 2005	% increase/decrease
\$533,226	\$474,344	12.41%



Historical Sales Tax Data

Sales Tax Totals - 1998 to 2006



	January	February	March	April	May	June	July	August	September	October	November	December
■ 1998	\$1,312,107	\$1,306,179	\$1,569,306	\$623,003	\$516,115	\$753,943	\$976,649	\$932,296	\$847,365	\$656,052	\$635,383	\$1,430,670
■ 1999	\$1,277,195	\$1,375,120	\$1,647,187	\$709,777	\$568,771	\$844,830	\$1,028,270	\$1,021,558	\$916,329	\$677,995	\$656,063	\$1,495,712
■ 2000	\$1,355,249	\$1,505,684	\$1,879,789	\$684,244	\$637,578	\$939,481	\$1,133,251	\$1,098,829	\$998,420	\$722,617	\$734,644	\$1,615,197
■ 2001	\$1,517,372	\$1,596,296	\$1,844,737	\$712,155	\$678,521	\$1,040,995	\$1,186,620	\$1,214,665	\$1,023,255	\$762,275	\$726,706	\$1,618,152
■ 2002	\$1,468,242	\$1,609,764	\$1,822,635	\$774,194	\$704,180	\$983,139	\$1,233,805	\$1,175,667	\$927,575	\$718,161	\$736,832	\$1,687,541
■ 2003	\$1,471,061	\$1,497,398	\$1,788,181	\$737,652	\$710,214	\$979,861	\$1,215,159	\$1,207,373	\$942,596	\$842,980	\$770,632	\$1,833,477
■ 2004	\$1,530,388	\$1,609,507	\$1,855,895	\$793,619	\$744,456	\$1,097,622	\$1,325,813	\$1,209,657	\$1,112,790	\$875,854	\$839,590	\$2,083,481
■ 2005	\$1,617,152	\$1,735,244	\$1,968,480	\$803,359	\$815,925	\$1,223,199	\$1,457,453	\$1,299,301	\$1,201,275	\$962,731	\$961,550	\$2,361,337
■ 2006	\$1,813,820	\$1,863,657	\$2,322,444	\$908,760	\$940,971	\$1,371,415	\$1,602,302					

This document was created with Win2PDF available at <http://www.daneprairie.com>.
The unregistered version of Win2PDF is for evaluation or non-commercial use only.