



## August 2006 Sales, Use, and Accommodation Tax Report

The City of Steamboat Springs Sales, Use, and Accommodation Tax Report examines tax collections for the month of August 2006.

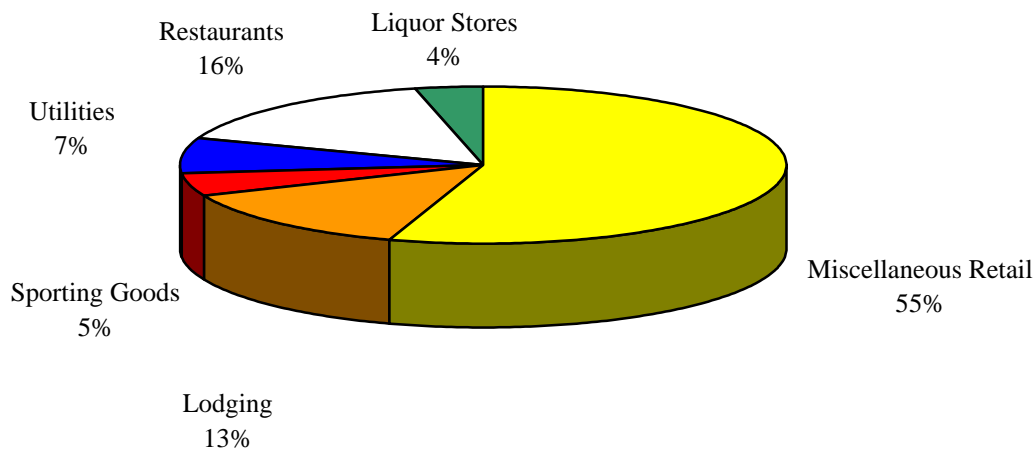
### Sales Tax

August 2006 sales tax collections increased 9.80% from sales tax collections for the month of August 2005. Year-to-date, sales tax collections increased 12.28%.

Sales Tax August 2006 *	Sales Tax August 2005	% increase/decrease over last year
\$1,426,671	\$1,299,301	9.80%

Sales Tax Year-to-date	Sales Tax January-August 2005	% increase/decrease over last year
\$12,260,880	\$10,920,113	12.28%

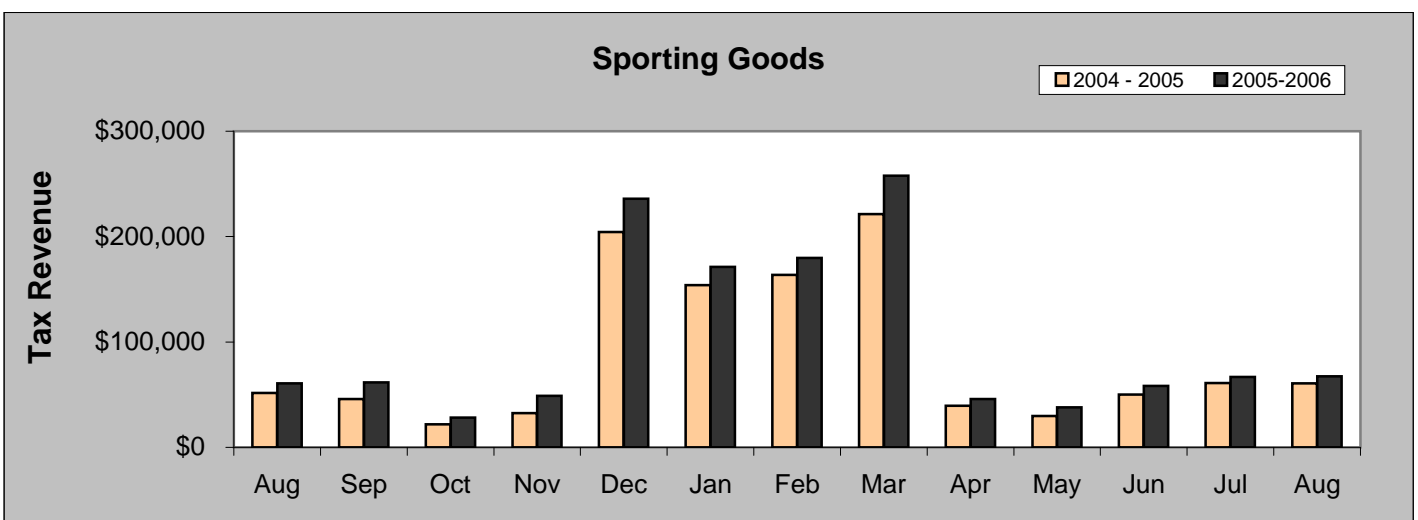
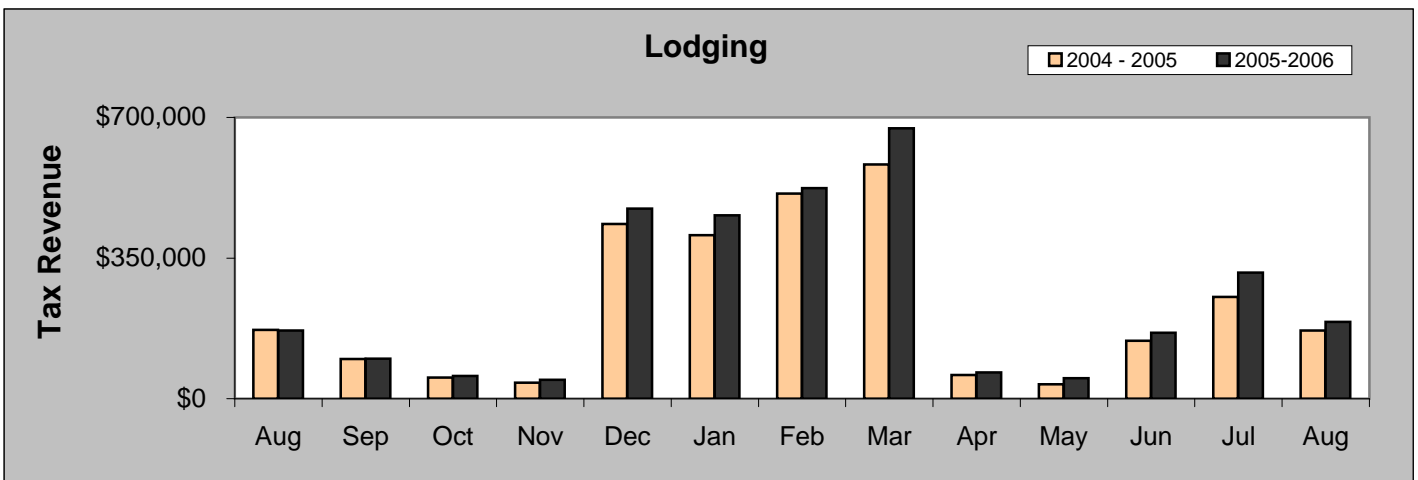
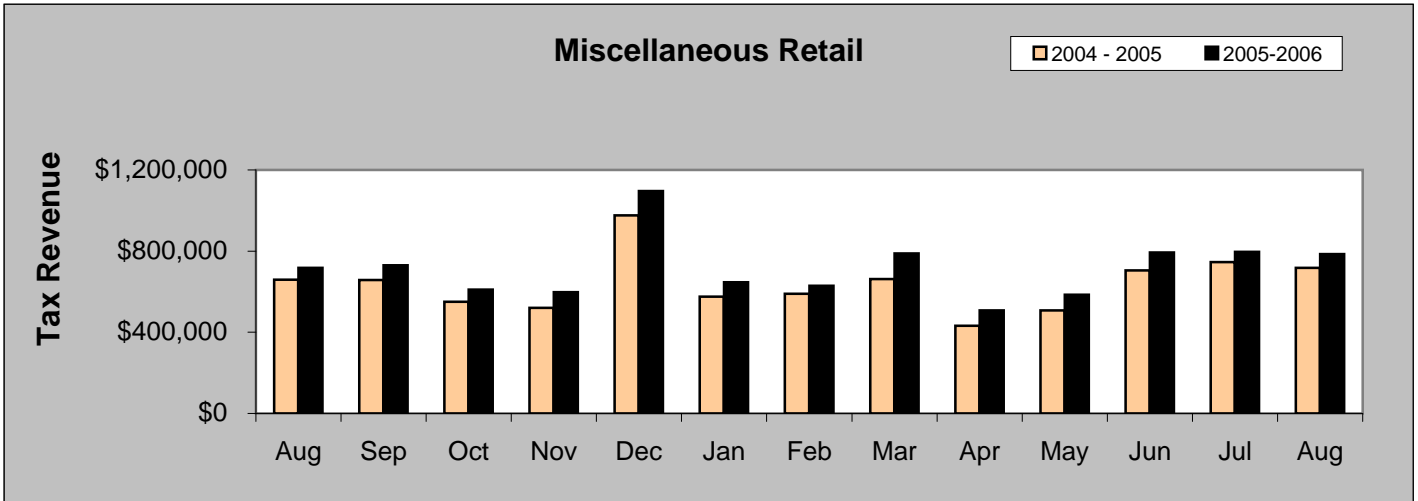
### August 2006 Sales Categories

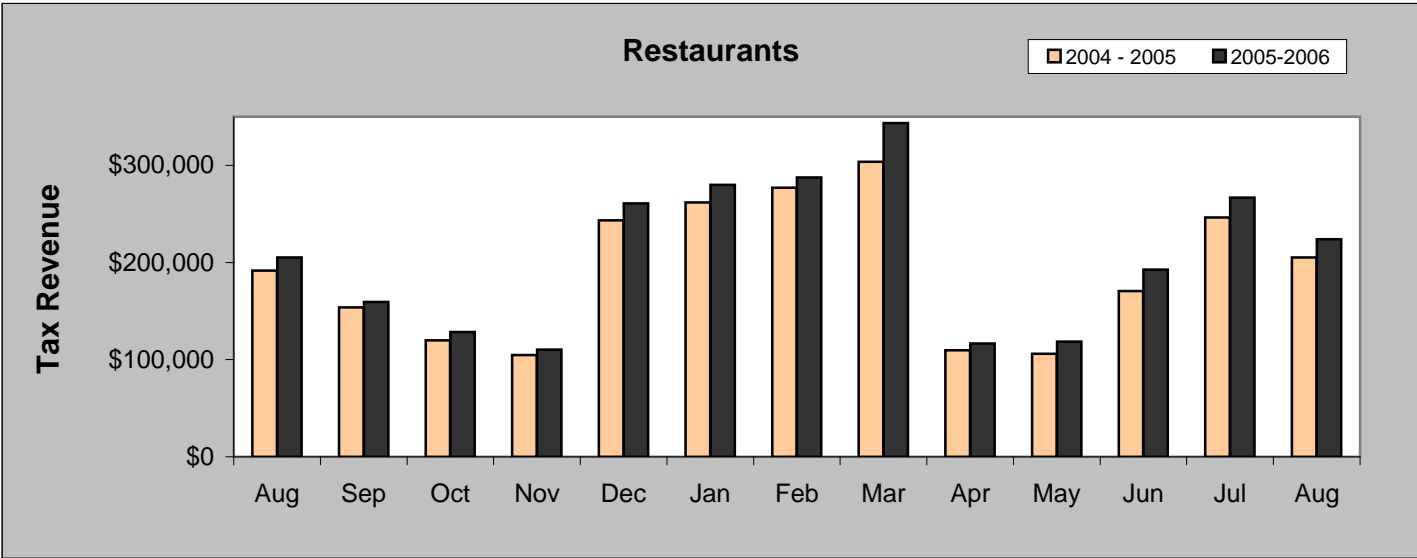
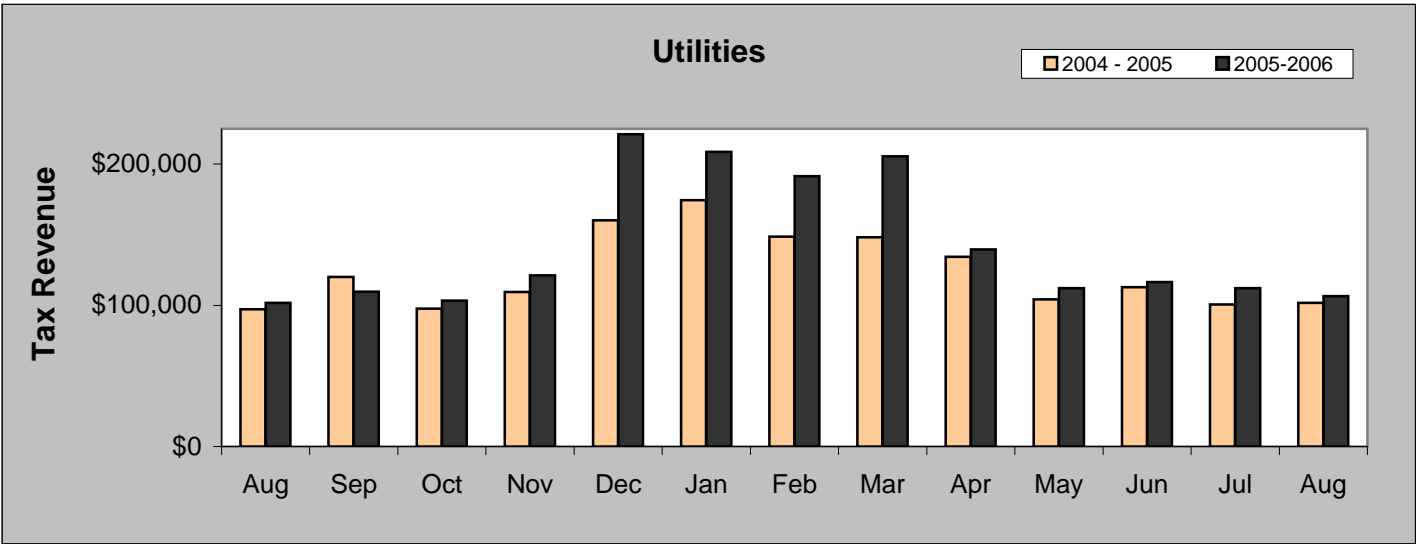


\* Includes amounts that will accrue to the Urban Renewal Authority.

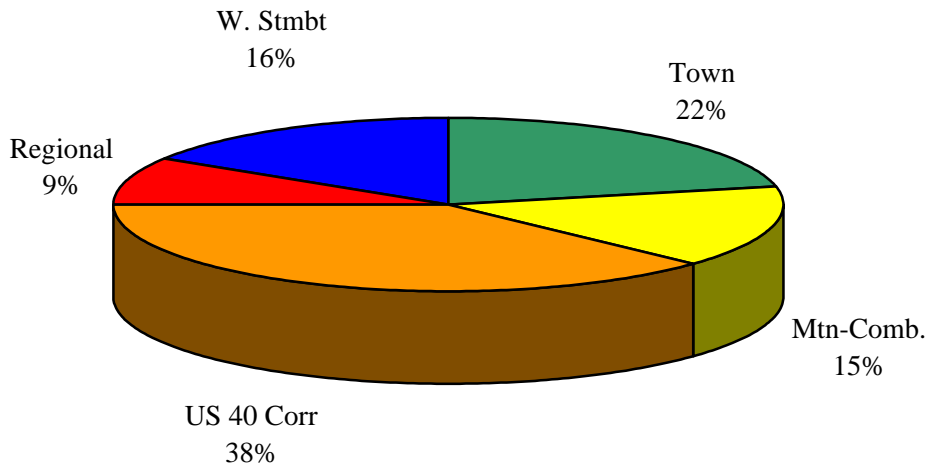
## AUGUST COMPARISON BY CATEGORY

	2005	2006	%
Miscellaneous Retail	\$717,374	\$785,783	9.54%
Lodging	\$169,659	\$191,184	12.69%
Sporting Goods	\$60,584	\$67,552	11.50%
Utilities	\$101,850	\$106,446	4.51%
Restaurants	\$205,083	\$223,753	9.10%
Liquor Stores	\$44,754	\$51,954	16.09%

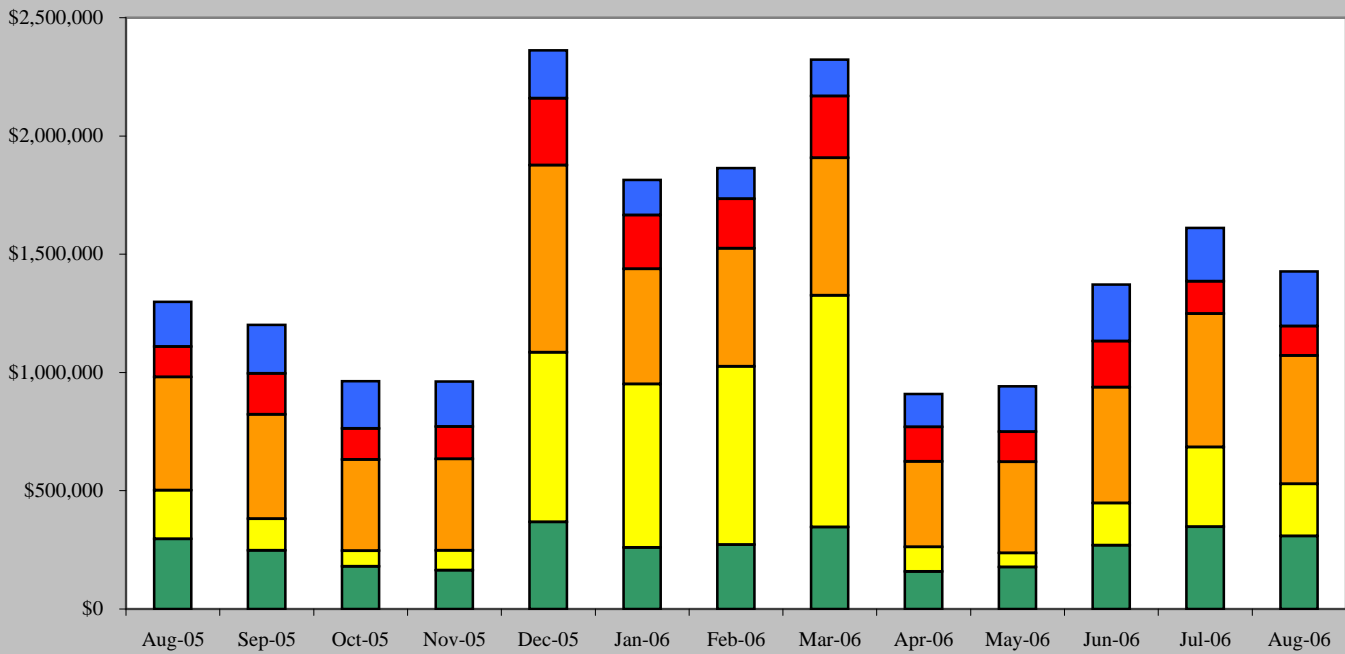




### August 2006 Sales Tax By Area



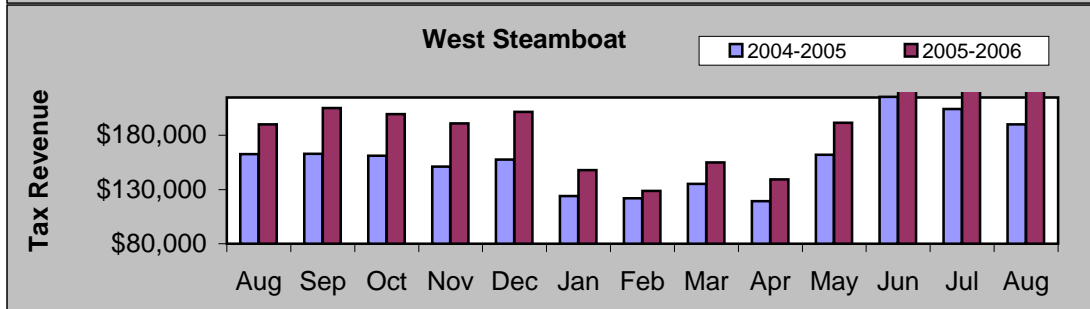
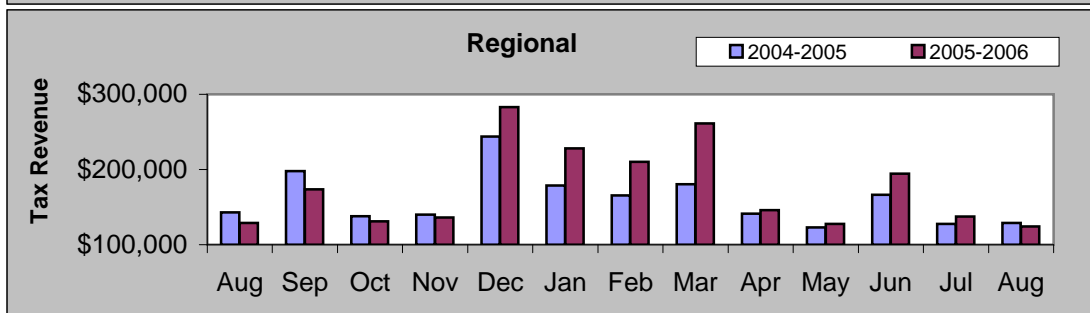
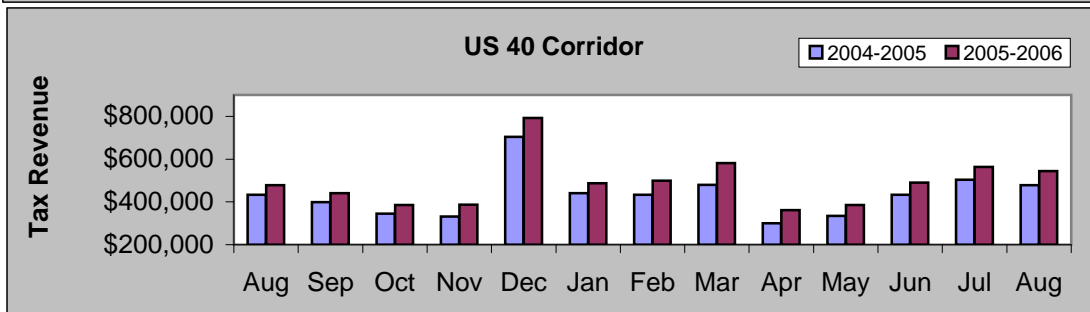
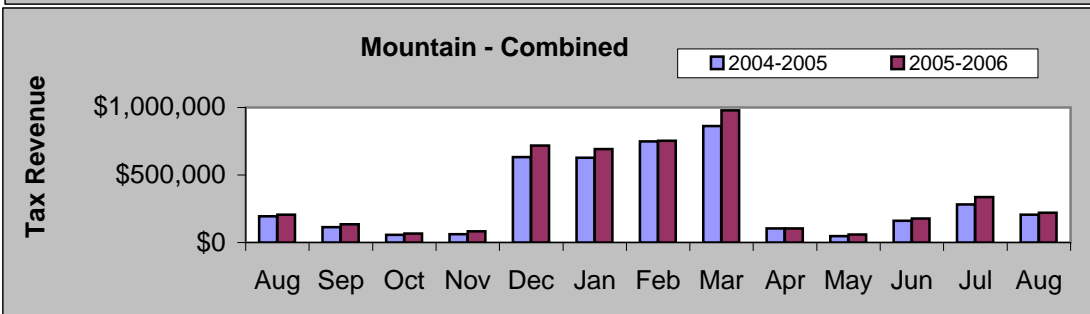
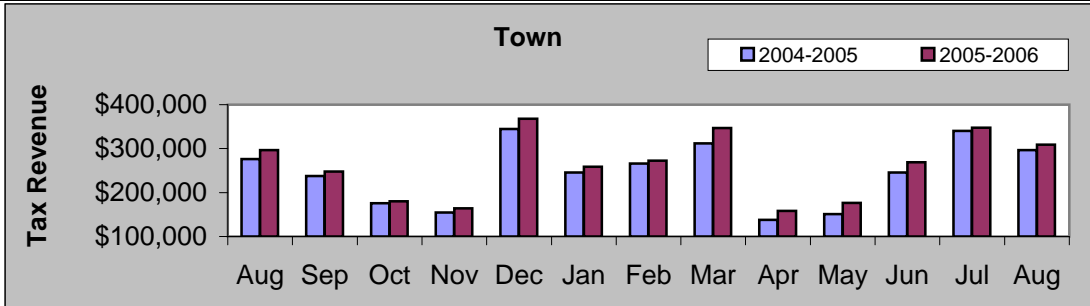
### August 2005 - August 2006



	Aug-05	Sep-05	Oct-05	Nov-05	Dec-05	Jan-06	Feb-06	Mar-06	Apr-06	May-06	Jun-06	Jul-06	Aug-06
■ W. Stmbt	\$190,228	\$205,256	\$199,652	\$191,065	\$201,804	\$147,989	\$128,858	\$154,904	\$139,245	\$191,652	\$240,466	\$225,212	\$230,611
■ Regional	\$128,868	\$173,488	\$131,105	\$136,033	\$282,798	\$228,274	\$210,296	\$261,315	\$146,058	\$127,555	\$194,644	\$137,543	\$124,209
■ US 40 Corr	\$478,196	\$440,720	\$386,051	\$386,309	\$791,586	\$486,904	\$498,747	\$581,207	\$361,087	\$386,084	\$489,490	\$563,620	\$543,480
■ Mtn-Comb.	\$205,746	\$134,280	\$66,105	\$84,000	\$717,468	\$691,569	\$753,250	\$979,071	\$104,198	\$59,555	\$178,790	\$337,113	\$219,285
■ Town	\$296,263	\$247,530	\$179,819	\$164,144	\$367,876	\$259,090	\$272,537	\$346,891	\$158,172	\$176,565	\$268,948	\$347,310	\$309,086

### AUGUST COMPARISON BY AREA

Area	2005	2006	%
Town	\$296,263	\$309,086	4.33%
Mountain - Combined	\$205,746	\$219,285	6.58%
US 40 Corridor	\$478,196	\$543,480	13.65%
Regional	\$128,868	\$124,209	-3.62%
West Steamboat	\$190,228	\$230,611	21.23%

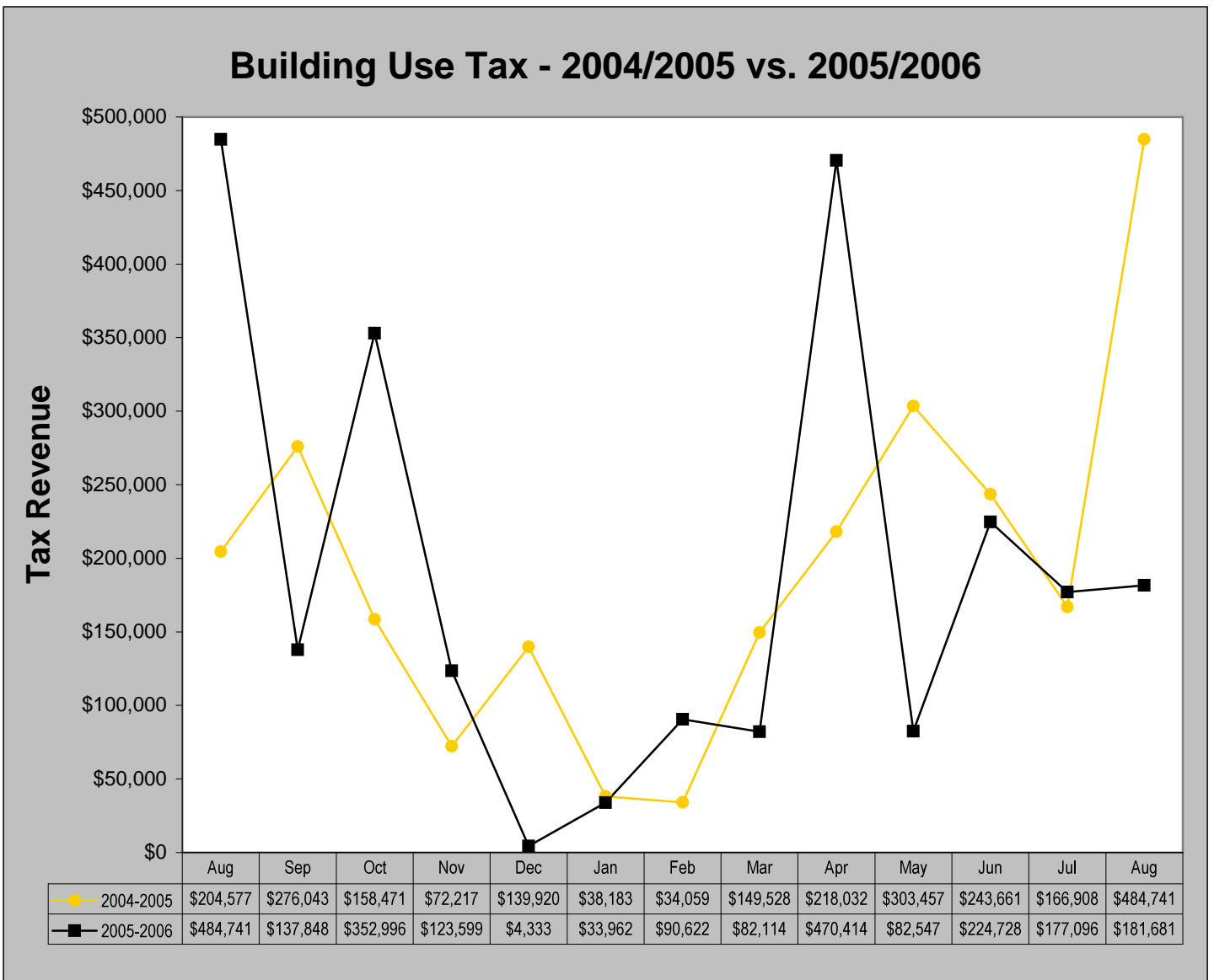


# Building Use Tax

August 2006 Building Use Tax collections decreased 62.52% from August 2005. Year-to-date, building use tax collections decreased 18.03%.

August 2006 Building Use Tax	August 2005 Building Use Tax	% increase/decrease
\$181,681	\$484,741	-62.52%

Building Use Tax Year-to-date	Building Use Tax January-August 2005	% increase/decrease
\$1,343,164	\$1,638,569	-18.03%

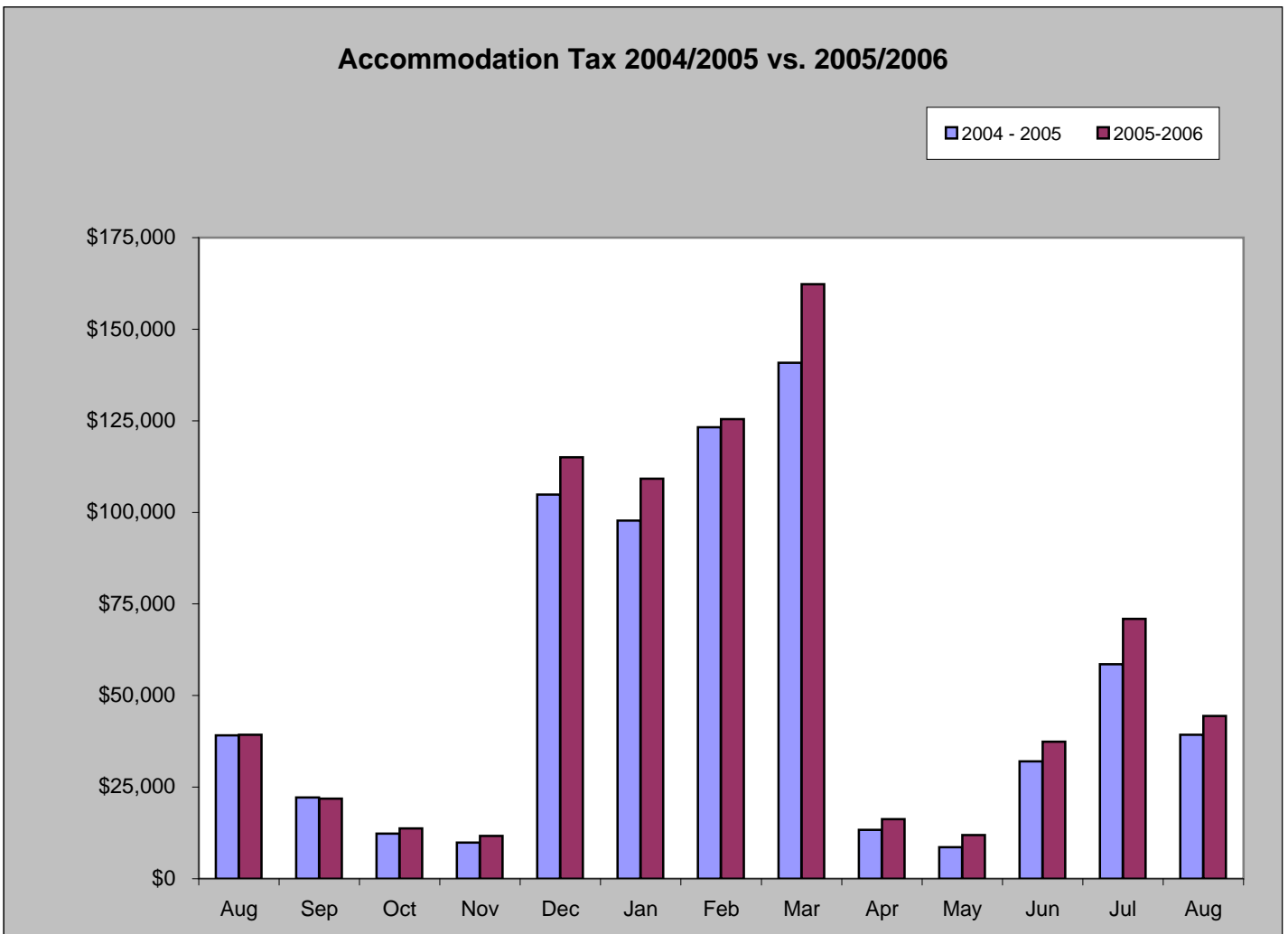


# Accommodation Tax

August 2006 accommodation tax increased 13.14% from August 2005. Year-to-date, accommodation tax collection increased 12.51%.

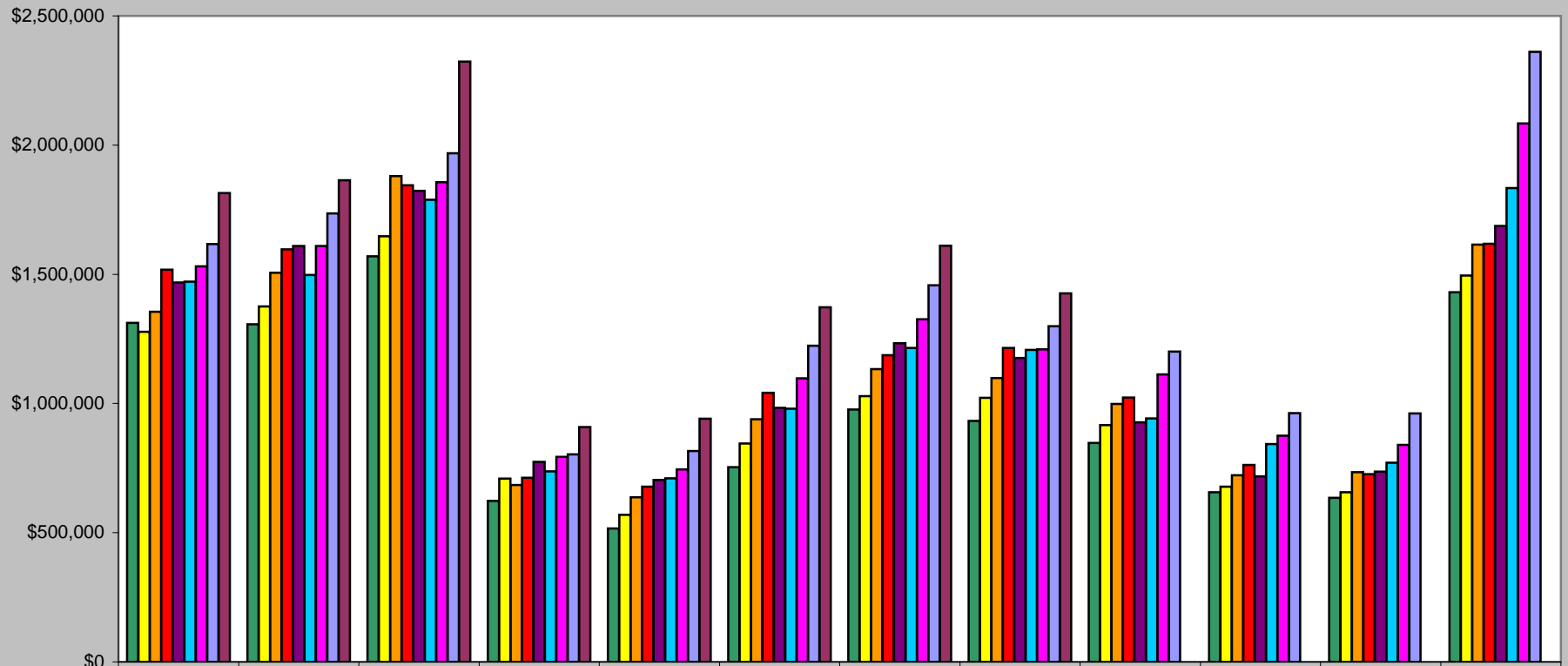
August 2006 Accommodation Tax	August 2005 Accommodation Tax	% increase/decrease
\$44,413	\$39,254	13.14%

Accommodation Tax Year-to-date	Accommodation Tax January-August 2005	% increase/decrease
\$577,750	\$513,531	12.51%



## Historical Sales Tax Data

### Sales Tax Totals - 1998 to 2006



	January	February	March	April	May	June	July	August	September	October	November	December
■ 1998	\$1,312,107	\$1,306,179	\$1,569,306	\$623,003	\$516,115	\$753,943	\$976,649	\$932,296	\$847,365	\$656,052	\$635,383	\$1,430,670
■ 1999	\$1,277,195	\$1,375,120	\$1,647,187	\$709,777	\$568,771	\$844,830	\$1,028,270	\$1,021,558	\$916,329	\$677,995	\$656,063	\$1,495,712
■ 2000	\$1,355,249	\$1,505,684	\$1,879,789	\$684,244	\$637,578	\$939,481	\$1,133,251	\$1,098,829	\$998,420	\$722,617	\$734,644	\$1,615,197
■ 2001	\$1,517,372	\$1,596,296	\$1,844,737	\$712,155	\$678,521	\$1,040,995	\$1,186,620	\$1,214,665	\$1,023,255	\$762,275	\$726,706	\$1,618,152
■ 2002	\$1,468,242	\$1,609,764	\$1,822,635	\$774,194	\$704,180	\$983,139	\$1,233,805	\$1,175,667	\$927,575	\$718,161	\$736,832	\$1,687,541
■ 2003	\$1,471,061	\$1,497,398	\$1,788,181	\$737,652	\$710,214	\$979,861	\$1,215,159	\$1,207,373	\$942,596	\$842,980	\$770,632	\$1,833,477
■ 2004	\$1,530,388	\$1,609,507	\$1,855,895	\$793,619	\$744,456	\$1,097,622	\$1,325,813	\$1,209,657	\$1,112,790	\$875,854	\$839,590	\$2,083,481
■ 2005	\$1,617,152	\$1,735,244	\$1,968,480	\$803,359	\$815,925	\$1,223,199	\$1,457,453	\$1,299,301	\$1,201,275	\$962,731	\$961,550	\$2,361,337
■ 2006	\$1,813,826	\$1,863,688	\$2,323,388	\$908,760	\$941,411	\$1,372,338	\$1,610,798	\$1,426,671				

This document was created with Win2PDF available at <http://www.daneprairie.com>.  
The unregistered version of Win2PDF is for evaluation or non-commercial use only.