

CAST - Colorado Association of Ski Towns

Taxable Sales (based on Sales/Use tax collected)

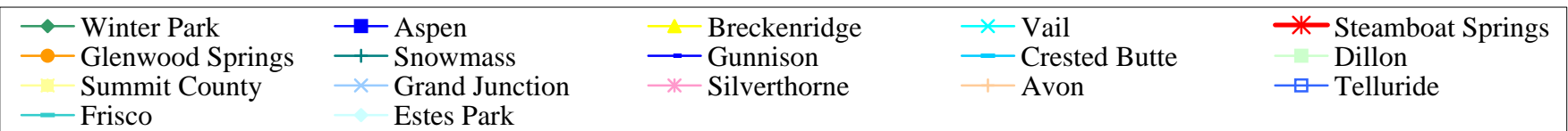
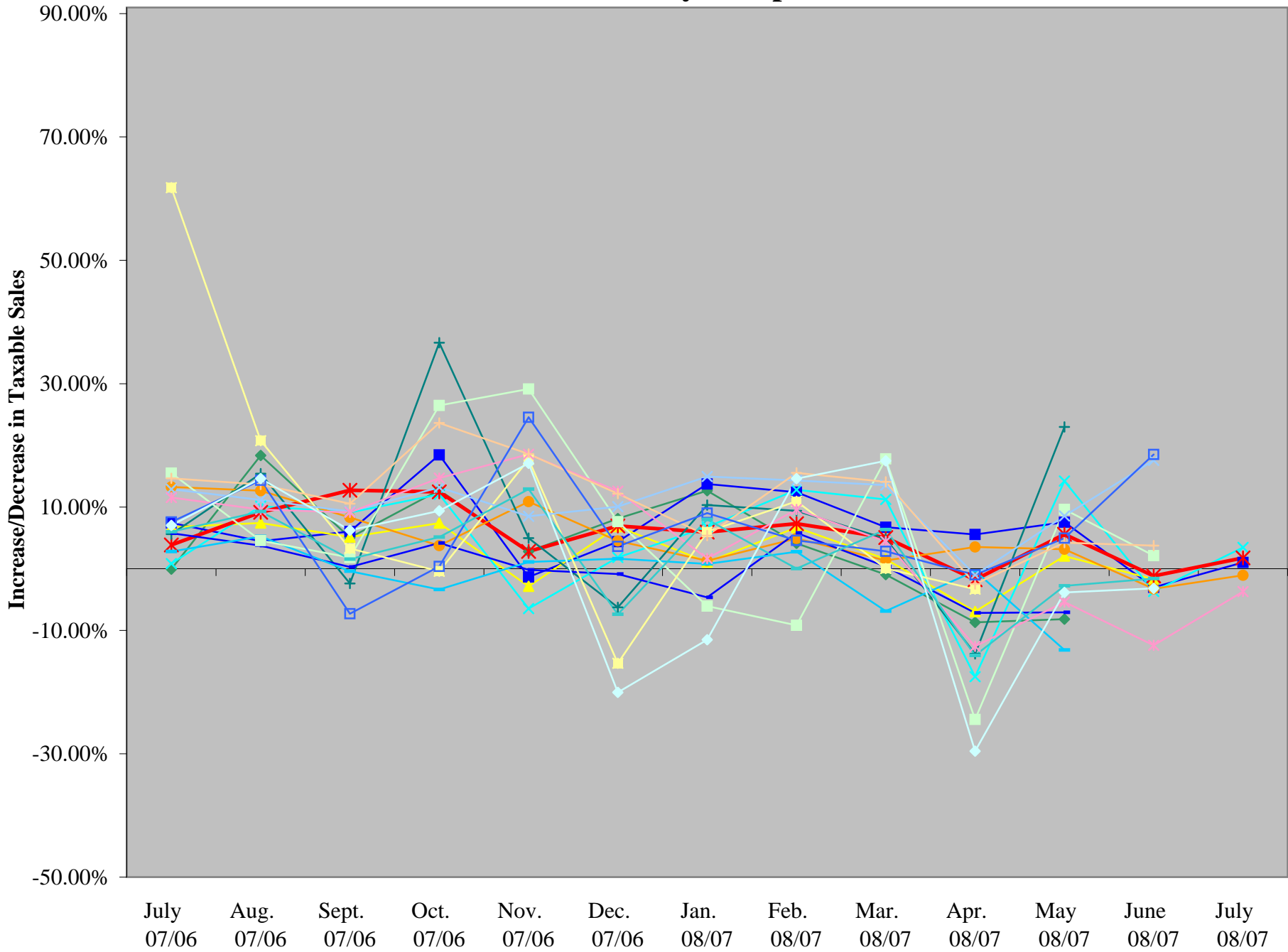
2007/2006 to 2008/2007

	July 2007/2006	Aug. 2007/2006	Sept. 2007/2006	Oct. 2007/2006	Nov. 2007/2006	Dec. 2007/2006	Jan. 2008/2007	Feb. 2008/2007	Mar. 2008/2007	Apr. 2008/2007	May 2008/2007	June 2008/2007	July 2007/2006	
Sales - Winter Park (5%)	\$ 5,462,080	\$ 5,343,380	\$ 4,773,960	\$ 2,921,900	\$ 4,326,440	\$ 14,267,820	\$ 12,822,940	\$ 12,421,840	\$ 17,360,140	\$ 4,661,300	\$ 2,089,000			
<i>Winter Park % Inc(Dec) in sales</i>	-0.06%	18.35%	5.04%	12.73%	2.79%	13.195,840	11.382,580	11.931,640	17,526,960	5,105,520	2,275,040			
							12.65%	4.11%	-0.95%	-8.70%	-8.18%			
Sales - Aspen (2.2%)	\$ 52,094,818	\$ 46,806,682	\$ 35,917,000	\$ 22,714,182	\$ 21,217,500	\$ 76,078,773	\$ 65,846,455	\$ 61,818,227	\$ 67,212,773	\$ 23,851,273	\$ 18,356,500	\$ 37,974,273	\$ 52,622,864	
<i>Aspen % Inc(Dec) in sales</i>	\$ 48,489,727	\$ 44,807,500	\$ 33,873,045	\$ 19,176,955	\$ 21,507,364	\$ 72,872,818	\$ 57,896,045	\$ 54,994,227	\$ 62,973,182	\$ 22,596,455	\$ 17,069,545	\$ 39,153,864	\$ 52,094,818	
	7.43%	4.46%	6.03%	18.45%	-1.35%	4.40%	13.73%	12.41%	6.73%	5.55%	7.54%	-3.02%	1.01%	
												Year-to-date:	6.81%	
Sales - Breckenridge (2.5%)	\$ 25,770,664	\$ 23,651,510	\$ 21,219,796	\$ 14,644,972	\$ 17,878,532	\$ 50,642,289	\$ 45,077,293	\$ 46,738,166	\$ 57,926,635	\$ 22,119,941	\$ 12,461,422	\$ 20,229,883		
<i>Breckenridge % Inc(Dec) in sales</i>	\$ 24,139,228	\$ 22,017,921	\$ 20,186,131	\$ 13,635,497	\$ 18,403,648	\$ 47,408,091	\$ 44,599,942	\$ 43,814,052	\$ 57,028,578	\$ 23,772,341	\$ 12,210,151	\$ 20,582,804		
	6.76%	7.42%	5.12%	7.40%	-2.85%	6.82%	1.07%	6.67%	1.57%	-6.95%	2.06%	-1.71%		
													Year-to-date:	6.81%
Sales - Steamboat Springs (4%)	\$ 41,925,775	\$ 39,188,950	\$ 36,855,700	\$ 32,040,575	\$ 27,881,700	\$ 63,794,375	\$ 54,156,125	\$ 54,506,625	\$ 64,346,000	\$ 24,962,925	\$ 26,796,975	\$ 37,347,100	\$ 42,664,975	
<i>Steamboat % Inc(Dec) in sales</i>	\$ 40,367,375	\$ 35,902,875	\$ 32,696,125	\$ 28,491,200	\$ 27,121,450	\$ 59,656,875	\$ 51,116,525	\$ 50,800,850	\$ 61,248,425	\$ 25,415,025	\$ 25,377,525	\$ 37,791,375	\$ 41,925,775	
	3.86%	9.15%	12.72%	12.46%	2.80%	6.94%	5.95%	7.29%	5.06%	-1.78%	5.59%	-1.18%	1.76%	
													Year-to-date:	3.78%
Sales - Vail (4%)	\$ 31,644,525	\$ 29,068,650	\$ 22,707,950	\$ 17,212,975	\$ 18,696,925	\$ 70,546,775	\$ 74,297,225	\$ 76,662,025	\$ 83,051,625	\$ 27,443,125	\$ 15,587,450	\$ 22,949,050	\$ 32,736,200	
<i>Vail % Inc(Dec) in sales</i>	\$ 31,381,075	\$ 26,390,350	\$ 20,813,725	\$ 15,359,900	\$ 19,989,550	\$ 69,281,450	\$ 69,582,650	\$ 67,966,075	\$ 74,661,150	\$ 33,268,500	\$ 13,646,850	\$ 23,825,425	\$ 31,644,525	
	0.84%	10.15%	9.10%	12.06%	-6.47%	1.83%	6.78%	12.79%	11.24%	-17.51%	14.22%	-3.68%	3.45%	
													Year-to-date:	5.76%
Sales - Glenwood (3.7%)	\$ 39,751,243	\$ 39,902,108	\$ 41,660,703	\$ 34,269,162	\$ 35,014,811	\$ 48,455,973	\$ 31,431,216	\$ 30,801,297	\$ 36,687,081	\$ 32,348,838	\$ 36,573,757	\$ 41,874,351	\$ 39,330,946	
<i>Glenwood % Inc(Dec) in sales</i>	\$ 35,099,108	\$ 35,424,351	\$ 38,463,676	\$ 33,031,919	\$ 31,577,324	\$ 46,365,405	\$ 31,031,595	\$ 29,363,027	\$ 36,206,919	\$ 31,249,081	\$ 35,454,514	\$ 43,284,108	\$ 39,751,243	
	13.25%	12.64%	8.31%	3.75%	10.89%	4.51%	1.29%	4.90%	1.33%	3.52%	3.16%	-3.26%	-1.06%	
													Year-to-date:	1.10%
Sales - Snowmass (1%)	\$ 7,267,287	\$ 7,804,971	\$ 5,519,200	\$ 3,551,228	\$ 3,997,945	\$ 19,078,886	\$ 27,322,115	\$ 25,540,857	\$ 27,932,256	\$ 5,916,800	\$ 2,867,915	\$ 4,782,686		
<i>Snowmass % Inc(Dec) in sales</i>	\$ 6,880,972	\$ 6,762,571	\$ 5,139,975	\$ 2,598,743	\$ 3,809,171	\$ 20,354,258	\$ 24,766,886	\$ 23,347,658	\$ 26,639,800	\$ 6,864,771	\$ 2,332,001	\$ 5,413,258		
	5.61%	15.41%	-2.40%	36.65%	4.96%	-6.27%	10.32%	9.39%	4.85%	-13.81%	22.98%	-11.65%		
													Year-to-date:	-11.65%
Sales - Gunnison (3%)	\$ 13,152,533	\$ 12,867,200	\$ 11,976,400	\$ 9,898,367	\$ 8,387,267	\$ 11,847,967	\$ 8,724,433	\$ 8,269,533	\$ 8,955,100	\$ 7,603,533	\$ 8,685,400	\$ 10,835,033		
<i>Gunnison % Inc(Dec) in sales</i>	\$ 12,437,100	\$ 12,401,800	\$ 11,942,533	\$ 9,502,300	\$ 8,401,867	\$ 11,949,967	\$ 9,149,600	\$ 7,815,900	\$ 8,923,433	\$ 8,189,733	\$ 9,345,900	\$ 11,834,667		
	5.75%	3.75%	0.28%	4.17%	-0.17%	-0.85%	4.65%	5.80%	0.35%	-7.16%	-7.07%	-8.45%		
													Year-to-date:	-8.45%
Sales - Crested Butte (4%)	\$ 7,397,775	\$ 6,491,325	\$ 5,119,050	\$ 2,787,225	\$ 2,854,975	\$ 5,764,050	\$ 4,404,600	\$ 4,388,800	\$ 5,111,250	\$ 2,297,325	\$ 2,332,250	\$ 4,588,900	\$ 7,212,175	
<i>Crested Butte % Inc(Dec) in sales</i>	\$ 7,197,025	\$ 6,168,000	\$ 5,139,975	\$ 2,884,175	\$ 2,823,950	\$ 5,671,800	\$ 4,370,700	\$ 4,271,000	\$ 5,488,250	\$ 2,305,925	\$ 2,685,875	\$ 4,808,500	\$ 7,397,775	
	2.79%	5.24%	-0.41%	-3.36%	1.10%	1.63%	0.78%	2.76%	-6.87%	-0.37%	-13.17%	-4.57%	-2.51%	
													Year-to-date:	-3.17%
Sales - Dillon (2%)	\$ 18,436,050	\$ 15,942,900	\$ 14,695,100	\$ 13,882,200	\$ 13,921,450	\$ 31,062,300	\$ 19,242,650	\$ 17,054,400	\$ 25,345,900	\$ 12,941,050	\$ 11,638,650	\$ 14,899,350		
<i>Dillon % Inc(Dec) in sales</i>	\$ 15,962,150	\$ 15,247,500	\$ 14,433,600	\$ 10,976,550	\$ 10,779,900	\$ 28,859,750	\$ 20,485,800	\$ 18,778,200	\$ 21,513,700	\$ 17,126,600	\$ 10,616,350	\$ 14,588,200		
	15.50%	4.56%	1.81%	26.47%	29.14%	7.63%	-6.07%	-9.18%	17.81%	-24.44%	9.63%	2.13%		
													Year-to-date:	2.13%
Sales - Summit County (2%)	\$ 15,363,450	\$ 18,969,450	\$ 13,068,750	\$ 10,190,250	\$ 14,837,300	\$ 33,322,850	\$ 34,323,650	\$ 34,734,700	\$ 40,797,250	\$ 14,640,900	\$ 9,517,100	\$ 16,208,750		
<i>Summit County % Inc(Dec) in sales</i>	\$ 9,496,600	\$ 15,709,650	\$ 12,653,650	\$ 10,232,250	\$ 12,603,150	\$ 39,352,650	\$ 32,386,750	\$ 31,310,050	\$ 40,778,000	\$ 15,142,650	\$ 7,359,350	\$ 13,729,700		
	61.78%	20.75%	3.28%	-0.41%	17.73%	-15.32%	5.98%	10.94%	0.05%	-3.31%	29.32%	18.06%		
													Year-to-date:	18.06%
Sales - Grand Junction (2%)	\$ 191,667,309	\$ 161,538,727	\$ 162,717,527	\$ 192,482,545	\$ 158,287,273	\$ 159,789,127	\$ 239,470,255	\$ 163,419,382	\$ 147,573,964	\$ 171,562,473	\$ 160,817,236	\$ 178,002,218		
<i>Grand Junction % Inc(Dec) in sales</i>	\$ 169,793,600	\$ 145,324,545	\$ 148,916,982	\$ 170,062,327	\$ 145,893,418	\$ 145,176,873	\$ 208,332,727	\$ 142,974,764	\$ 129,959,636	\$ 173,328,000	\$ 148,153,382	\$ 151,393,309		
	12.88%	11.16%	9.27%	13.18%	8.50%	10.07%	14.95%	14.30%	13.55%	-1.02%	8.55%	17.58%		
													Year-to-date:	17.58%
Sales - Silverthorne (2%)	\$ 20,437,450	\$ 20,090,050	\$ 20,668,050	\$ 16,702,350	\$ 18,514,900	\$ 26,832,900	\$ 17,590,050	\$ 18,084,900	\$ 24,470,550	\$ 12,919,250	\$ 13,333,034	\$ 19,123,293	\$ 19,680,629	
<i>Silverthorne % Inc(Dec) in sales</i>	\$ 18,322,600	\$ 18,333,300	\$ 18,937,450	\$ 14,563,400	\$ 15,616,400	\$ 23,835,700	\$ 17,305,000	\$ 16,499,800	\$ 23,433,750	\$ 14,779,250	\$ 14,094,823	\$ 21,836,148	\$ 20,437,450	
	11.54%	9.58%	9.14%	14.69%	18.56%	12.57%	1.65%	9.61%	4.42%	-12.59%	-5.40%	-12.42%	-3.70%	
													Year-to-date:	-2.48%
Sales - Avon (4%)	\$ 11,401,692	\$ 10,614,586	\$ 10,540,182	\$ 9,199,127	\$ 9,058,847	\$ 21,708,334	\$ 13,824,533	\$ 14,357,530	\$ 16,327,386	\$ 8,726,526	\$ 8,030,344	\$ 10,684,293		
<i>Avon % Inc(Dec) in sales</i>	\$ 9,943,776	\$ 9,339,065	\$ 9,535,270	\$ 7,441,020	\$ 7,638,373	\$ 19,352,838	\$ 13,120,510	\$ 12,425,313	\$ 14,310,692	\$ 8,948,734	\$ 7,704,150	\$ 10,298,150		
	14.66%	13.66%	10.54%	23.63%	18.60%	12.17%	5.37%	15.55%	14.09%	-2.48%	4.23%	3.75%		
													Year-to-date:	3.75%
Sales - Telluride (4.5%)	\$ 9,970,142	\$ 9,245,594	\$ 8,914,364	\$ 4,595,606	\$ 4,652,947	\$ 12,448,910	\$ 10,952,771	\$ 10,777,407	\$ 12,221,597	\$ 3,404,077	\$ 4,578,134	\$ 10,913,314	\$ 9,652,820	
<i>Telluride % Inc(Dec) in sales</i>	\$ 9,268,082	\$ 8,085,147	\$ 9,616,187	\$ 4,578,237	\$ 3,735,912	\$ 12,014,502	\$ 10,047,385	\$ 10,304,324	\$ 11,885,469	\$ 3,437,956	\$ 4,362,013	\$ 9,207,756	\$ 9,970,142	
	7.58%	14.35%	-7.30%	0.38%	24.55%	3.62%	9.01%	4.59%	2.83%	-0.99%	4.95%	18.52%	-3.18%	
													Year-to-date:	5.55%
Sales - Frisco (4%)	\$ 13,901,450	\$ 13,212,975	\$ 12,465,350	\$ 10,035,550	\$ 11,724,425	\$ 16,569,300	\$ 14,379,925	\$ 13,982,425	\$ 16,122,675	\$ 10,277,350	\$ 8,831,900	\$ 11,715,825		
<i>Frisco % Inc(Dec) in sales</i>	\$ 13,114,750	\$ 12,091,950	\$ 12,273,675	\$ 9,546,550	\$ 10,384,050	\$ 17,892,100	\$ 13,315,550	\$ 13,980,475	\$ 15,159,550	\$ 11,959,850	\$ 9,084,150	\$ 11,907,025		
	6.00%	9.27%	1.56%	5.12%	12.91%	-7.39%	7.99%	0.01%	6.35%	-14.07%	-2.78%	-1.61%		
													Year-to-date:	-1.61%
Sales - Estes Park (4%)	\$ 28,802,950	\$ 25,628,150	\$ 25,229,625	\$ 13,056,800	\$ 9,954,600	\$ 9,398,800	\$ 6,661,406	\$ 7,965,000	\$ 8,455,875	\$ 8,180,622	\$ 12,601,000	\$ 21,661,748		
<i>Estes % Inc(Dec) in sales</i>	\$ 26,913,800	\$ 22,357,375	\$ 23,748,725	\$ 11,936,625	\$ 8,501,450	\$ 11,756,675	\$ 7,528,975	\$ 6,950,425	\$ 7,197,075	\$ 11,616,500	\$ 13,105,550	\$ 22,373,250		
	7.02%	14.63%	6.24%	9.38%	17.09%	-20.06%	-11.52%	14.60%	17.49%	-29.58%	-3.85%	-3.18%		
													Year-to-date:	-3.18%

CAST - Colorado Association of Ski Towns
Taxable Sales (based on Sales/Use tax collected)
2007/2006 to 2008/2007

	July 07/06	Aug. 07/06	Sept. 07/06	Oct. 07/06	Nov. 07/06	Dec. 07/06	Jan. 08/07	Feb. 08/07	Mar. 08/07	Apr. 08/07	May 08/07	June 08/07	July 08/07
Winter Park	-0.06%	18.35%	5.04%	12.73%	2.79%	8.12%	12.65%	4.11%	-0.95%	-8.70%	-8.18%		
Aspen	7.43%	4.46%	6.03%	18.45%	-1.35%	4.40%	13.73%	12.41%	6.73%	5.55%	7.54%	-3.02%	1.01%
Breckenridge	6.76%	7.42%	5.12%	7.40%	-2.85%	6.82%	1.07%	6.67%	1.57%	-6.95%	2.06%	-1.71%	
Vail	0.84%	10.15%	9.10%	12.06%	-6.47%	1.83%	6.78%	12.79%	11.24%	-17.51%	14.22%	-3.68%	3.45%
Steamboat Springs	3.86%	9.15%	12.72%	12.46%	2.80%	6.94%	5.95%	7.29%	5.06%	-1.78%	5.59%	-1.18%	1.76%
Glenwood Springs	13.25%	12.64%	8.31%	3.75%	10.89%	4.51%	1.29%	4.90%	1.33%	3.52%	3.16%	-3.26%	-1.06%
Snowmass	5.61%	15.41%	-2.40%	36.65%	4.96%	-6.27%	10.32%	9.39%	4.85%	-13.81%	22.98%	-11.65%	
Gunnison	5.75%	3.75%	0.28%	4.17%	-0.17%	-0.85%	-4.65%	5.80%	0.35%	-7.16%	-7.07%	-8.45%	
Crested Butte	2.79%	5.24%	-0.41%	-3.36%	1.10%	1.63%	0.78%	2.76%	-6.87%	-0.37%	-13.17%	-4.57%	-2.51%
Dillon	15.50%	4.56%	1.81%	26.47%	29.14%	7.63%	-6.07%	-9.18%	17.81%	-24.44%	9.63%	2.13%	
Summit County	61.78%	20.75%	3.28%	-0.41%	17.73%	-15.32%	5.98%	10.94%	0.05%	-3.31%	29.32%	18.06%	
Grand Junction	12.88%	11.16%	9.27%	13.18%	8.50%	10.07%	14.95%	14.30%	13.55%	-1.02%	8.55%	17.58%	
Silverthorne	11.54%	9.58%	9.14%	14.69%	18.56%	12.57%	1.65%	9.61%	4.42%	-12.59%	-5.40%	-12.42%	-3.70%
Avon	14.66%	13.66%	10.54%	23.63%	18.60%	12.17%	5.37%	15.55%	14.09%	-2.48%	4.23%	3.75%	
Telluride	7.58%	14.35%	-7.30%	0.38%	24.55%	3.62%	9.01%	4.59%	2.83%	-0.99%	4.95%	18.52%	-3.18%
Frisco	6.00%	9.27%	1.56%	5.12%	12.91%	-7.39%	7.99%	0.01%	6.35%	-14.07%	-2.78%	-1.61%	
Estes Park	7.02%	14.63%	6.24%	9.38%	17.09%	-20.06%	-11.52%	14.60%	17.49%	-29.58%	-3.85%	-3.18%	

CAST - Monthly Comparison



Mountain Communities
Taxable Sales Comparison
2007/2006 to 2008/2007

Actual Mountain Communities' Taxable Sales

	July 2007/2006	Aug. 2007/2006	Sept. 2007/2006	Oct. 2007/2006	Nov. 2007/2006	Dec. 2007/2006	Jan. 2008/2007	Feb. 2008/2007	Mar. 2008/2007	Apr. 2008/2007	May 2008/2007	June 2008/2007	July 2007/2006
Sales - Winter Park (5%)	\$ 5,462,080	\$ 5,343,380	\$ 4,773,960	\$ 2,921,900	\$ 4,326,440	\$ 14,267,820	\$ 12,822,940	\$ 12,421,840	\$ 17,360,140	\$ 4,661,300	\$ 2,089,000		
	\$ 5,465,540	\$ 4,514,720	\$ 4,544,800	\$ 2,591,880	\$ 4,208,820	\$ 13,195,840	\$ 11,382,580	\$ 11,931,640	\$ 17,526,960	\$ 5,105,520	\$ 2,275,040		
<i>Winter Park % Inc(Dec) in sales</i>	-0.06%	18.35%	5.04%	12.73%	2.79%	8.12%	12.65%	4.11%	-0.95%	-8.70%	-8.18%		
Sales - Aspen (2.2%)	\$ 52,094,818	\$ 46,806,682	\$ 35,917,000	\$ 22,714,182	\$ 21,217,500	\$ 76,078,773	\$ 65,846,455	\$ 61,818,227	\$ 67,212,773	\$ 23,851,273	\$ 18,356,500	\$ 37,974,273	\$ 52,622,864
	\$ 48,489,727	\$ 44,807,500	\$ 33,873,045	\$ 19,176,955	\$ 21,507,364	\$ 72,872,818	\$ 57,896,045	\$ 54,994,227	\$ 62,973,182	\$ 22,596,455	\$ 17,069,545	\$ 39,155,864	\$ 52,094,818
<i>Aspen % Inc(Dec) in sales</i>	7.43%	4.46%	6.03%	18.45%	-1.35%	4.40%	13.73%	12.41%	6.73%	5.55%	7.54%	-3.02%	1.01%
												<i>Year-to-date:</i>	6.81%
Sales - Breckenridge (2.5%)	\$ 25,770,664	\$ 23,651,510	\$ 21,219,796	\$ 14,644,972	\$ 17,878,532	\$ 50,642,289	\$ 45,077,293	\$ 46,738,166	\$ 57,926,635	\$ 22,119,941	\$ 12,461,422	\$ 20,229,883	
	\$ 24,139,228	\$ 22,017,921	\$ 20,186,131	\$ 13,635,497	\$ 18,403,648	\$ 47,408,091	\$ 44,599,942	\$ 43,814,052	\$ 57,028,578	\$ 23,772,341	\$ 12,210,151	\$ 20,582,804	
<i>Breckenridge % Inc(Dec) in sales</i>	6.76%	7.42%	5.12%	7.40%	-2.85%	6.82%	1.07%	6.67%	1.57%	-6.95%	2.06%	-1.71%	
Sales - Steamboat Springs (4%)	\$ 41,925,775	\$ 39,188,950	\$ 36,855,700	\$ 32,040,575	\$ 27,881,700	\$ 63,794,375	\$ 54,156,125	\$ 54,506,625	\$ 64,346,000	\$ 24,962,925	\$ 26,796,975	\$ 37,347,100	\$ 42,664,975
	\$ 40,367,375	\$ 35,902,875	\$ 32,696,125	\$ 28,491,200	\$ 27,121,450	\$ 59,656,875	\$ 51,116,525	\$ 50,800,850	\$ 61,248,425	\$ 25,415,025	\$ 25,377,525	\$ 37,791,375	\$ 41,925,775
<i>Steamboat % Inc(Dec) in sales</i>	3.86%	9.15%	12.72%	12.46%	2.80%	6.94%	5.95%	7.29%	5.06%	-1.78%	5.59%	-1.18%	1.76%
												<i>Year-to-date:</i>	3.78%
Sales - Vail (4%)	\$ 31,644,525	\$ 29,068,650	\$ 22,707,950	\$ 17,212,975	\$ 18,696,925	\$ 70,546,775	\$ 74,297,225	\$ 76,662,025	\$ 83,051,625	\$ 27,443,125	\$ 15,587,450	\$ 22,949,050	\$ 32,736,200
	\$ 31,381,075	\$ 26,390,350	\$ 20,813,725	\$ 15,359,900	\$ 19,989,550	\$ 69,281,450	\$ 69,582,650	\$ 67,966,075	\$ 74,661,150	\$ 33,268,500	\$ 13,646,850	\$ 23,825,425	\$ 31,644,525
<i>Vail % Inc(Dec) in sales</i>	0.84%	10.15%	9.10%	12.06%	-6.47%	1.83%	6.78%	12.79%	11.24%	-17.51%	14.22%	-3.68%	3.45%
												<i>Year-to-date:</i>	5.76%
Sales - Glenwood (3.7%)	\$ 39,751,243	\$ 39,902,108	\$ 41,660,703	\$ 34,269,162	\$ 35,014,811	\$ 48,455,973	\$ 31,431,216	\$ 30,801,297	\$ 36,687,081	\$ 32,348,838	\$ 36,573,757	\$ 41,874,351	\$ 39,330,946
	\$ 35,099,108	\$ 35,424,351	\$ 38,463,676	\$ 33,031,919	\$ 31,577,324	\$ 46,365,405	\$ 31,031,595	\$ 29,363,027	\$ 36,206,919	\$ 31,249,081	\$ 35,454,514	\$ 43,284,108	\$ 39,751,243
<i>Glenwood % Inc(Dec) in sales</i>	13.25%	12.64%	8.31%	3.75%	10.89%	4.51%	1.29%	4.90%	1.33%	3.52%	3.16%	-3.26%	-1.06%
												<i>Year-to-date:</i>	1.10%
Sales - Snowmass (1%)	\$ 7,267,287	\$ 7,804,971	\$ 5,519,200	\$ 3,551,228	\$ 3,997,945	\$ 19,078,886	\$ 27,322,115	\$ 25,540,857	\$ 27,932,256	\$ 5,916,800	\$ 2,867,915	\$ 4,782,686	
	\$ 6,880,972	\$ 6,762,571	\$ 5,654,914	\$ 2,598,743	\$ 3,809,171	\$ 20,354,258	\$ 24,766,886	\$ 23,347,658	\$ 26,639,800	\$ 6,864,771	\$ 2,332,001	\$ 5,413,258	
<i>Snowmass % Inc(Dec) in sales</i>	5.61%	15.41%	-2.40%	36.65%	4.96%	-6.27%	10.32%	9.39%	4.85%	-13.81%	22.98%	-11.65%	

Mountain Community - Monthly Comparison

