



July 2008

Sales, Use, and Accommodation Tax Report

The City of Steamboat Springs Sales, Use, and Accommodation Tax Report examines tax collections for the month of July 2008.

Sales Tax

July 2008 sales tax collections increased 1.76% from sales tax collections for the month of July 2007. General Fund sales tax collections increased 4.74% and Steamboat Springs Redevelopment Authority sales tax collections decreased 129.26% for the month of July 2008 compared to July 2007.

Year-to-date total sales tax collections increased 3.78%. General Fund sales tax collections increased 5.70% and Steamboat Springs Redevelopment Authority sales tax collections decreased 33.98% year-to-date.

TOTAL Sales Tax Jul-08	TOTAL Sales Tax Jul-07	% Inc/Dec	General Fund Sales Tax Jul-08	General Fund Sales Tax Jul-07	% Inc/Dec	SSRA Sales Tax Jul-08	SSRA Sales Tax Jul-07	% Inc/Dec
\$1,706,599	\$1,677,031	1.76%	\$1,717,488	\$1,639,821	4.74%	-\$10,889	\$37,210	-129.26%

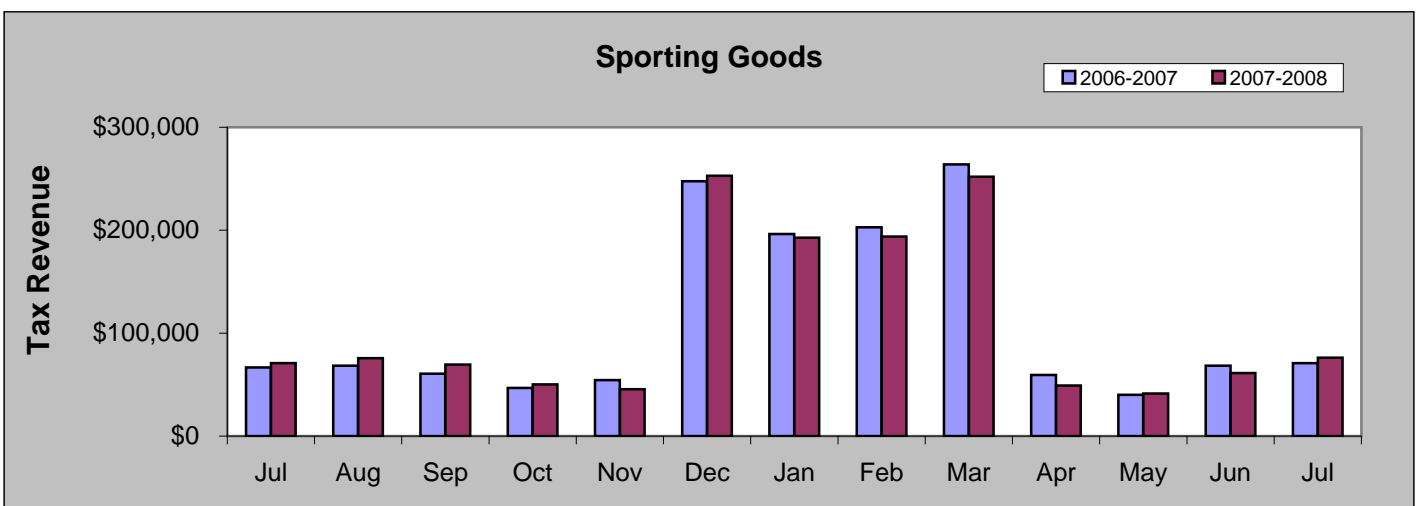
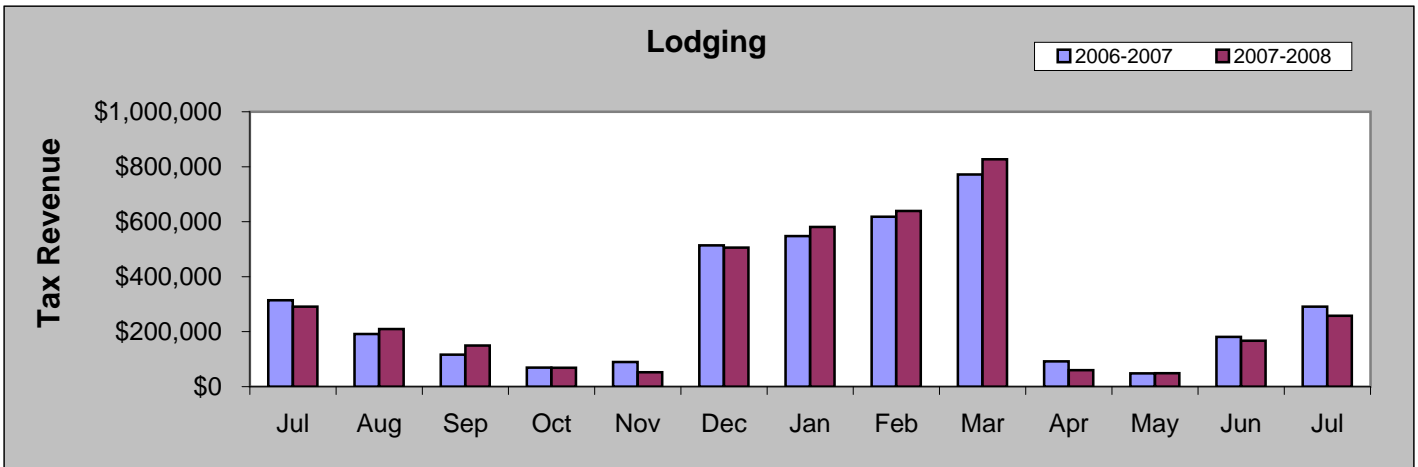
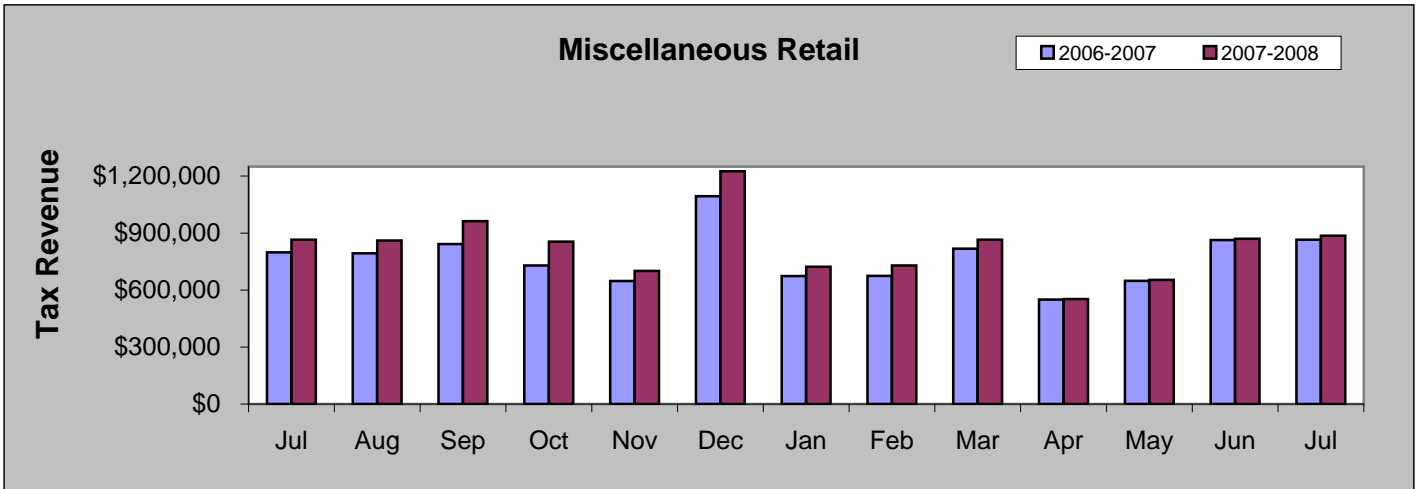
TOTAL Sales Tax YTD 2008	TOTAL Sales Tax YTD 2007	% Inc/Dec	General Fund Sales Tax YTD 2008	General Fund Sales Tax YTD 2007	% Inc/Dec	SSRA Sales Tax YTD 2008	SSRA Sales Tax YTD 2007	% Inc/Dec
\$12,191,229	\$11,747,020	3.78%	\$11,816,802	\$11,179,895	5.70%	\$374,427	\$567,125	-33.98%

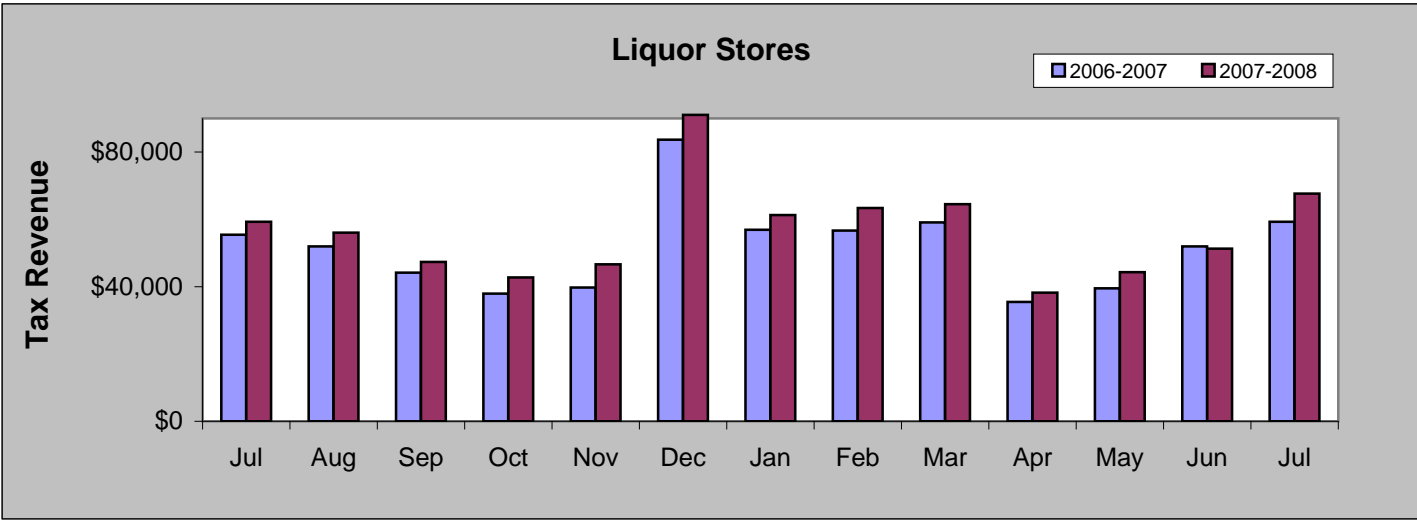
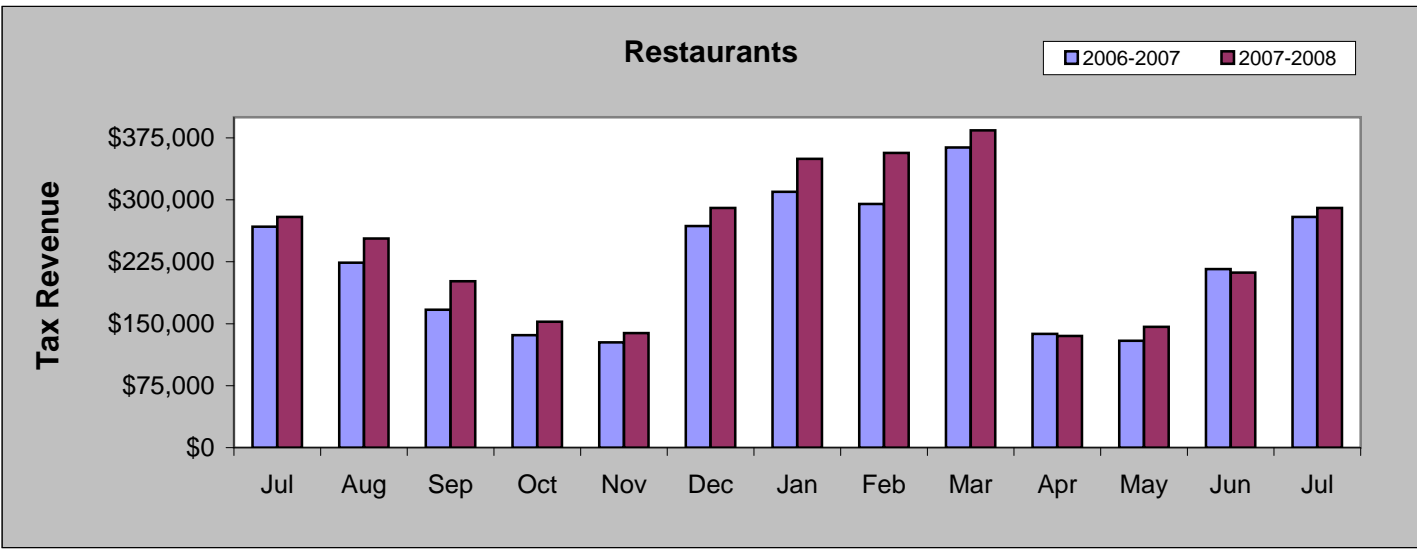
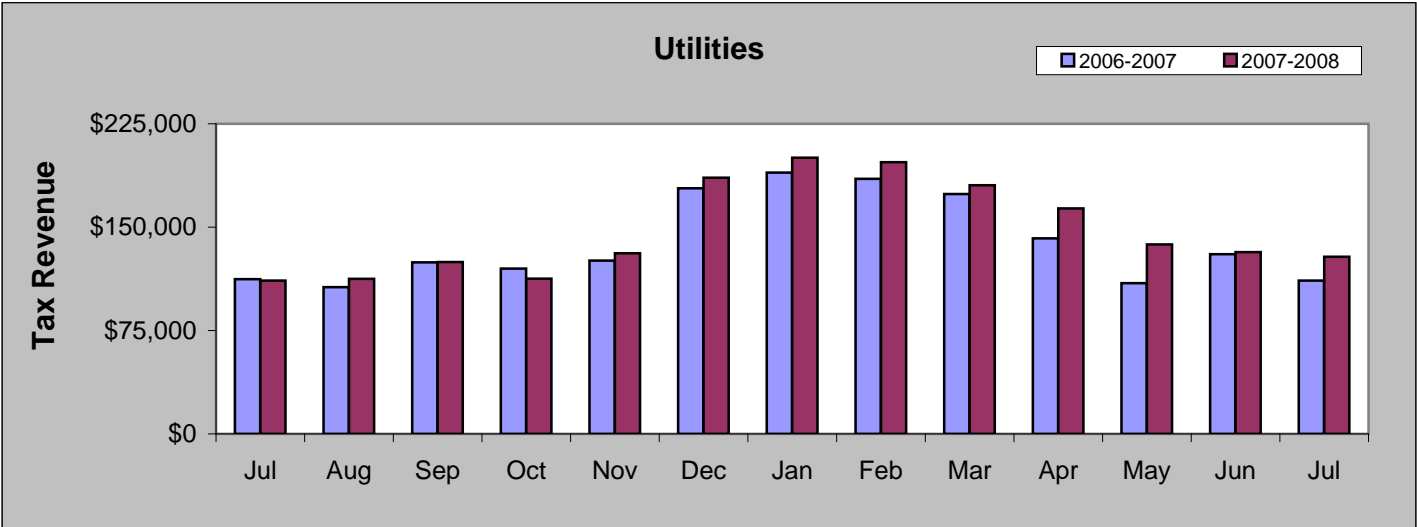
July 2008 Sales Categories



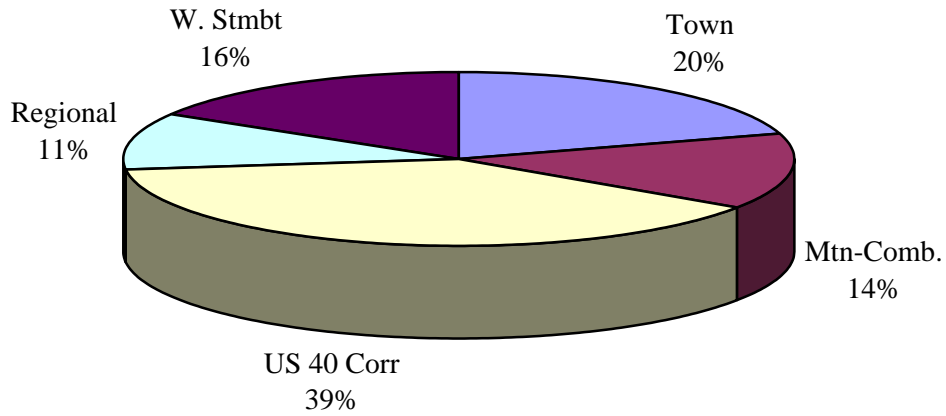
JULY COMPARISON BY CATEGORY

	2007	2008	%
Miscellaneous Retail	\$865,322	\$886,353	2.43%
Lodging	\$290,804	\$257,717	-11.38%
Sporting Goods	\$70,950	\$76,196	7.39%
Utilities	\$111,278	\$128,523	15.50%
Restaurants	\$279,406	\$290,175	3.85%
Liquor Stores	\$59,271	\$67,635	14.11%

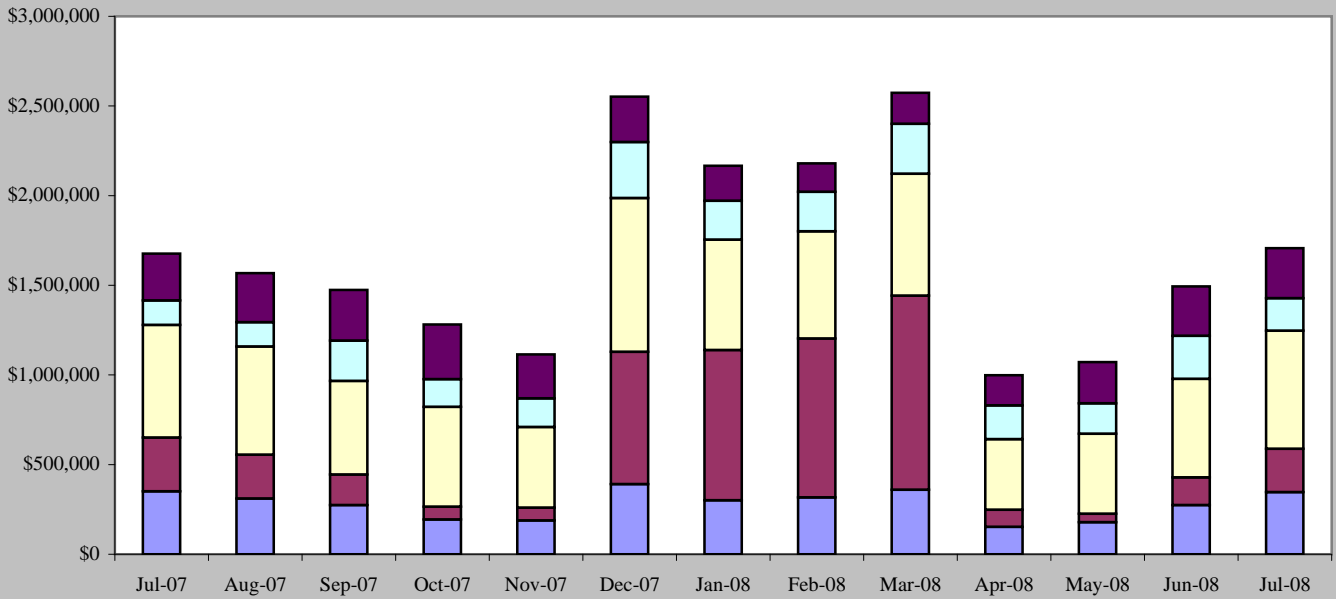




July 2008 Sales Tax By Area



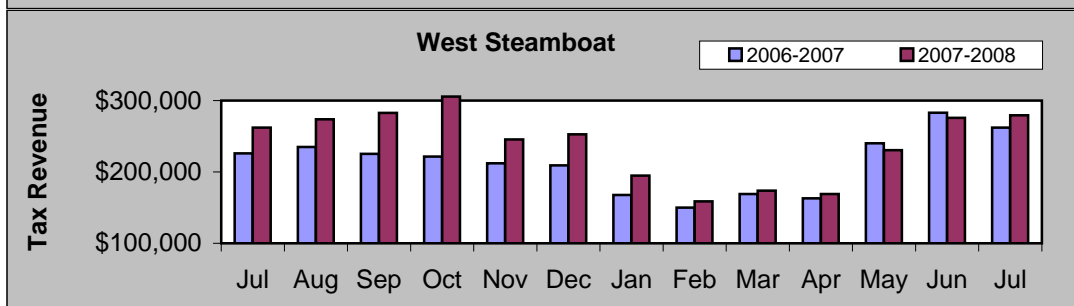
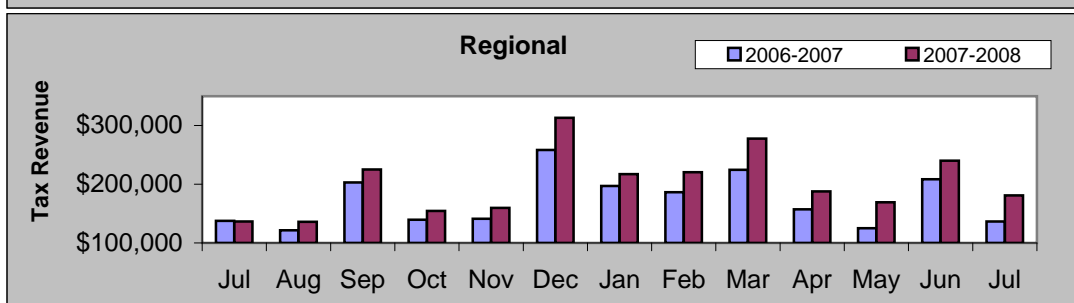
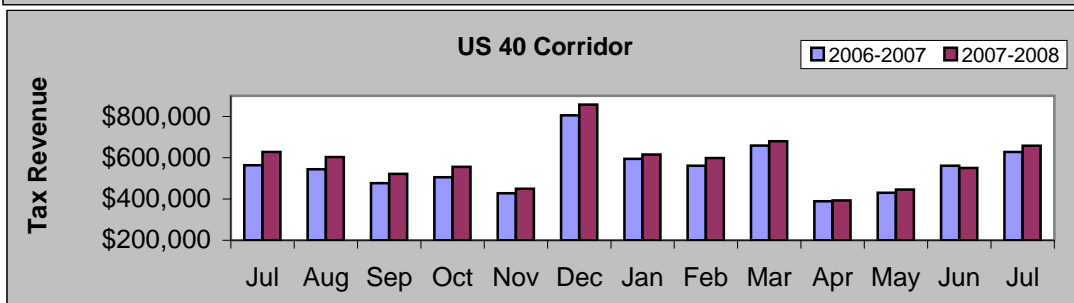
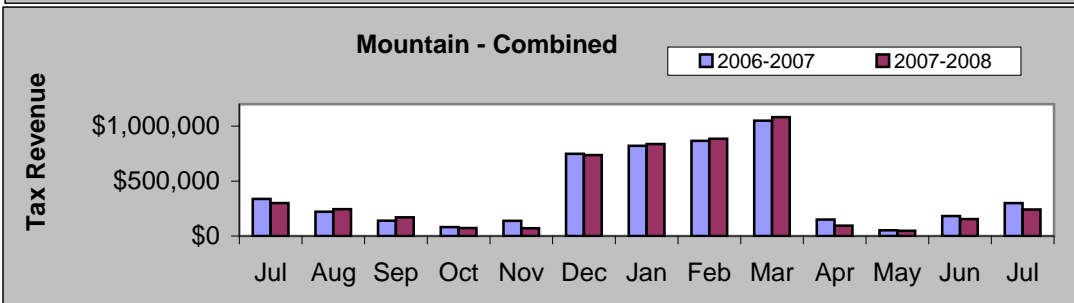
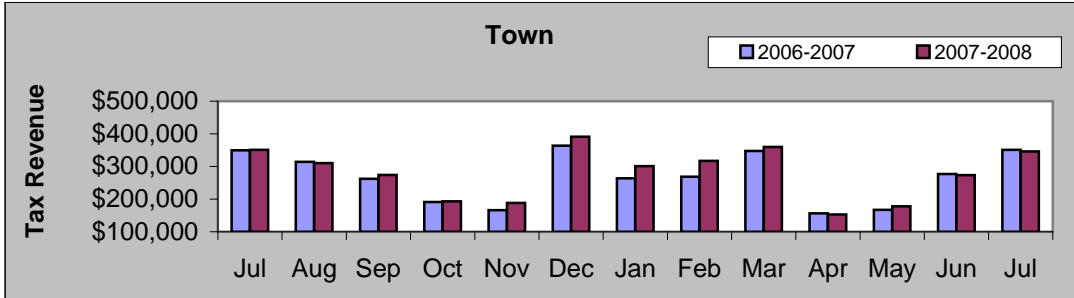
July 2007 - July 2008



	Jul-07	Aug-07	Sep-07	Oct-07	Nov-07	Dec-07	Jan-08	Feb-08	Mar-08	Apr-08	May-08	Jun-08	Jul-08
■ W. Stmbt	\$262,110	\$273,834	\$282,762	\$305,623	\$245,569	\$252,798	\$194,844	\$158,855	\$173,796	\$168,960	\$230,556	\$275,678	\$279,285
■ Regional	\$136,567	\$135,923	\$225,197	\$154,497	\$159,689	\$313,105	\$217,307	\$220,511	\$277,790	\$187,859	\$169,200	\$240,108	\$180,896
■ US 40 Corr	\$628,116	\$602,730	\$521,607	\$556,090	\$449,812	\$857,192	\$615,308	\$598,168	\$679,875	\$393,365	\$445,987	\$550,146	\$658,458
■ Mtn-Comb.	\$299,462	\$244,889	\$170,794	\$72,191	\$71,569	\$737,434	\$837,723	\$885,704	\$1,082,622	\$95,336	\$48,023	\$154,370	\$241,734
■ Town	\$350,776	\$310,183	\$273,867	\$193,221	\$188,269	\$391,251	\$301,064	\$317,027	\$359,756	\$152,997	\$178,114	\$273,584	\$346,226

JULY COMPARISON BY AREA

Area	2007	2008	%
Town	\$350,776	\$346,226	-1.30%
Mountain - Combined	\$299,462	\$241,734	-19.28%
US 40 Corridor	\$628,116	\$658,458	4.83%
Regional	\$136,567	\$180,896	32.46%
West Steamboat	\$262,110	\$279,285	6.55%



Building Use Tax

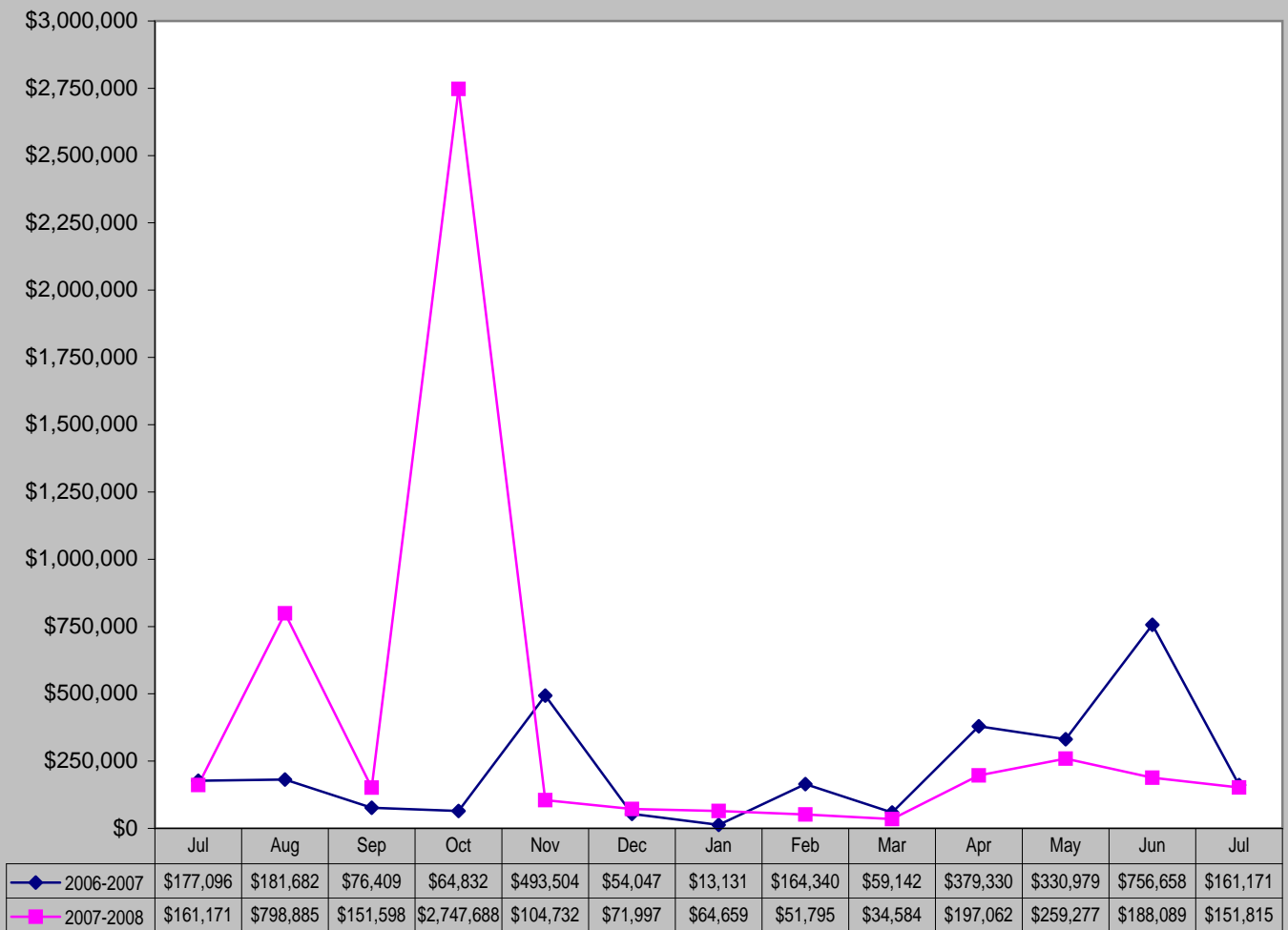
July 2008 Building Use Tax collections decreased 5.80% from July 2007.

Year-to-date building use tax collections decreased 49.20%.

Jul-08 Building Use Tax	Jul-07 Building Use Tax	% increase/decrease
\$151,815	\$161,171	-5.80%

Building Use Tax YTD 2008	Building Use Tax YTD 2007	% increase/decrease
\$947,282	\$1,864,751	-49.20%

Building Use Tax - 2006/2007 vs. 2007/2008



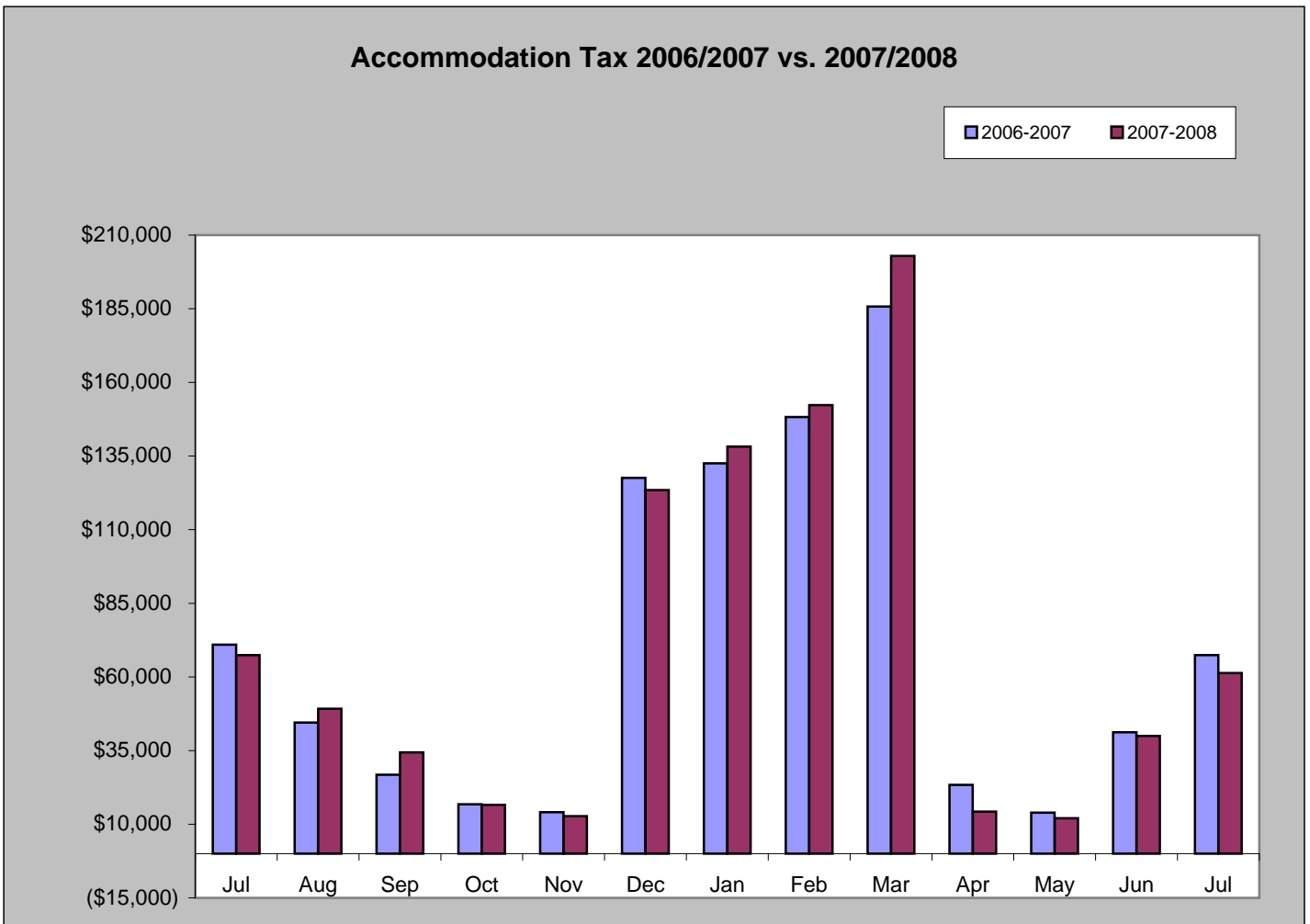
Accommodation Tax

July 2008 accommodation tax decreased 8.99% from July 2007.

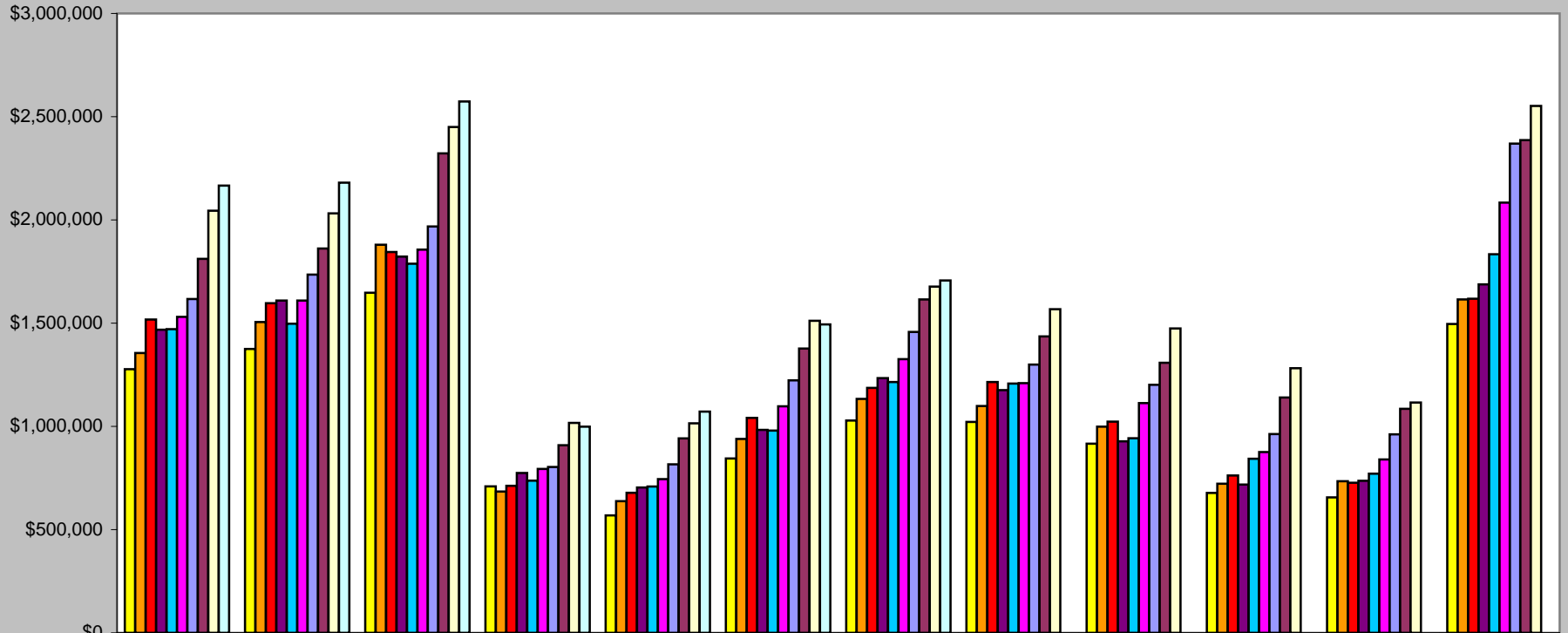
Year-to-date accommodation tax increased 1.41%.

Jul-08 Accommodation Tax	Jul-07 Accommodation Tax	% increase/decrease
\$61,350	\$67,407	-8.99%

Accommodation Tax YTD 2008	Accommodation Tax YTD 2007	% increase/decrease
\$621,068	\$612,435	1.41%



Historical Sales Tax Data Sales Tax Totals - 1999 to 2008



	January	February	March	April	May	June	July	August	September	October	November	December
1999	\$1,277,195	\$1,375,120	\$1,647,187	\$709,777	\$568,771	\$844,830	\$1,028,270	\$1,021,558	\$916,329	\$677,995	\$656,063	\$1,495,712
2000	\$1,355,249	\$1,505,684	\$1,879,789	\$684,244	\$637,578	\$939,481	\$1,133,251	\$1,098,829	\$998,420	\$722,617	\$734,644	\$1,615,197
2001	\$1,517,372	\$1,596,296	\$1,844,737	\$712,155	\$678,521	\$1,040,995	\$1,186,620	\$1,214,665	\$1,023,255	\$762,275	\$726,706	\$1,618,152
2002	\$1,468,242	\$1,609,764	\$1,822,635	\$774,194	\$704,180	\$983,142	\$1,233,685	\$1,175,569	\$927,496	\$718,049	\$736,818	\$1,687,509
2003	\$1,471,061	\$1,497,398	\$1,787,877	\$737,255	\$708,947	\$979,861	\$1,215,159	\$1,207,373	\$942,596	\$842,980	\$770,632	\$1,833,614
2004	\$1,530,388	\$1,609,507	\$1,855,895	\$793,619	\$744,456	\$1,097,619	\$1,325,813	\$1,209,657	\$1,112,747	\$875,854	\$839,590	\$2,083,871
2005	\$1,617,152	\$1,735,422	\$1,968,239	\$803,359	\$815,925	\$1,223,263	\$1,457,514	\$1,299,302	\$1,201,406	\$962,731	\$961,551	\$2,369,566
2006	\$1,811,413	\$1,861,558	\$2,322,443	\$908,584	\$941,595	\$1,377,269	\$1,614,695	\$1,436,115	\$1,307,845	\$1,139,648	\$1,084,858	\$2,386,275
2007	\$2,044,661	\$2,032,034	\$2,449,937	\$1,016,601	\$1,015,101	\$1,511,655	\$1,677,031	\$1,567,558	\$1,474,228	\$1,281,623	\$1,115,268	\$2,551,775
2008	\$2,166,245	\$2,180,265	\$2,573,840	\$998,517	\$1,071,879	\$1,493,884	\$1,706,599					