

CAST - Colorado Association of Ski Towns

Taxable Sales (based on Sales/Use tax collected)

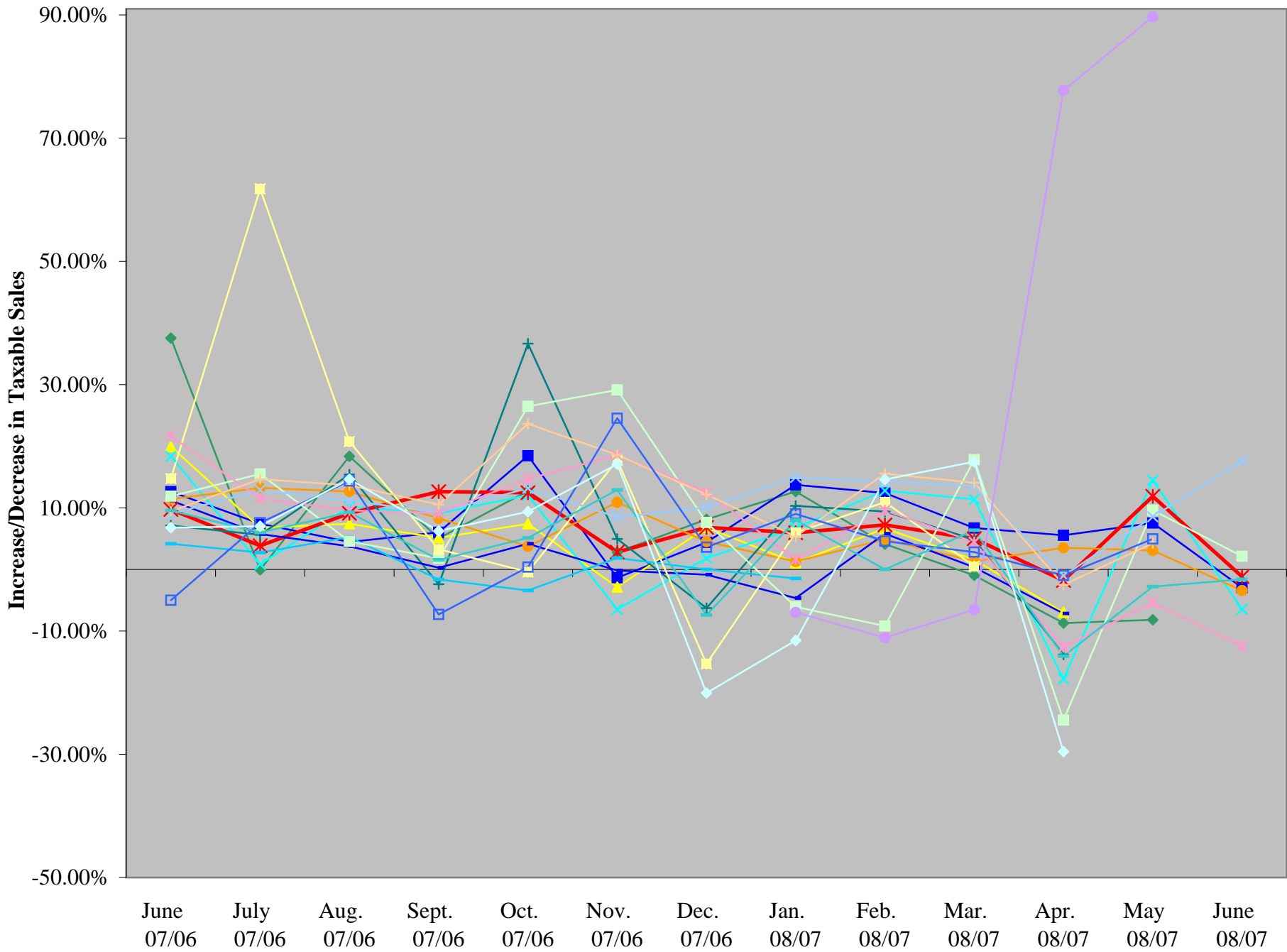
2007/2006 to 2008/2007

	June 2007/2006	July 2007/2006	Aug. 2007/2006	Sept. 2007/2006	Oct. 2007/2006	Nov. 2007/2006	Dec. 2007/2006	Jan. 2008/2007	Feb. 2008/2007	Mar. 2008/2007	Apr. 2008/2007	May 2008/2007	June 2008/2007
Sales - Winter Park (5%)	\$ 5,203,660	\$ 5,462,080	\$ 5,343,380	\$ 4,773,960	\$ 2,921,900	\$ 4,326,440	\$ 14,262,820	\$ 12,822,940	\$ 12,421,840	\$ 17,360,140	\$ 4,661,300	\$ 2,089,000	
<i>Winter Park % Inc(Dec) in sales</i>	37.56%	-0.06%	18.35%	5.04%	12.73%	2.79%	8.12%	12.65%	4.11%	-0.95%	-8.70%	-8.18%	
Sales - Aspen (2.2%)	\$ 39,155,864	\$ 52,094,818	\$ 46,806,682	\$ 35,917,000	\$ 22,714,182	\$ 21,217,500	\$ 76,078,773	\$ 65,846,455	\$ 61,818,227	\$ 67,212,773	\$ 23,851,273	\$ 18,356,500	\$ 38,002,091
<i>Aspen % Inc(Dec) in sales</i>	12.62%	7.43%	4.46%	6.03%	18.45%	-1.35%	4.40%	13.73%	12.41%	6.73%	5.53%	7.54%	-2.95%
												Year-to-date:	8.01%
Sales - Breckenridge (2.5%)	\$ 20,582,804	\$ 25,770,664	\$ 23,651,510	\$ 21,219,796	\$ 14,644,972	\$ 17,878,532	\$ 50,642,289	\$ 45,077,293	\$ 46,738,166	\$ 57,926,635	\$ 22,119,941		
<i>Breckenridge % Inc(Dec) in sales</i>	19.94%	6.76%	7.42%	5.12%	7.40%	-2.85%	6.82%	1.07%	6.67%	1.57%	-6.95%		
Sales - Steamboat Springs (4%)	\$ 37,789,375	\$ 41,922,275	\$ 39,171,450	\$ 36,827,125	\$ 32,040,500	\$ 27,885,550	\$ 63,574,175	\$ 54,156,025	\$ 54,472,200	\$ 64,312,475	\$ 24,959,325	\$ 28,390,250	\$ 37,352,875
<i>Steamboat % Inc(Dec) in sales</i>	9.75%	3.85%	9.10%	12.63%	12.46%	2.82%	6.82%	5.95%	7.23%	5.00%	-1.79%	11.87%	-1.16%
												Year-to-date:	4.73%
Sales - Vail (4%)	\$ 23,825,425	\$ 31,644,525	\$ 29,068,650	\$ 22,707,950	\$ 17,212,975	\$ 18,696,925	\$ 70,546,775	\$ 74,292,525	\$ 76,657,750	\$ 83,147,375	\$ 27,352,675	\$ 15,625,000	\$ 22,289,250
<i>Vail % Inc(Dec) in sales</i>	18.33%	0.84%	10.15%	9.10%	12.06%	-6.47%	1.83%	6.77%	12.79%	11.37%	-17.78%	14.50%	-6.45%
												Year-to-date:	5.80%
Sales - Glenwood (3.7%)	\$ 43,269,351	\$ 39,746,378	\$ 39,902,108	\$ 41,660,703	\$ 34,269,162	\$ 35,014,811	\$ 48,455,973	\$ 31,431,216	\$ 30,797,622	\$ 36,684,838	\$ 32,348,784	\$ 36,543,378	\$ 41,801,514
<i>Glenwood % Inc(Dec) in sales</i>	11.42%	13.24%	12.64%	8.31%	3.75%	10.89%	4.51%	1.29%	4.89%	1.32%	3.52%	3.07%	-3.43%
												Year-to-date:	1.46%
Sales - Snowmass (1%)	\$ 5,351,715	\$ 7,267,287	\$ 7,804,971	\$ 5,519,200	\$ 3,551,228	\$ 3,997,945	\$ 19,078,886	\$ 27,322,115	\$ 25,540,857	\$ 27,932,256	\$ 5,916,800	\$ 2,867,915	\$ 4,782,686
<i>Snowmass % Inc(Dec) in sales</i>	7.14%	5.61%	13.41%	-2.40%	36.65%	4.96%	-6.27%	10.32%	9.39%	4.85%	-13.81%	22.98%	-1.65%
												Year-to-date:	5.59%
Sales - Gunnison (3%)	\$ 11,834,667	\$ 13,152,333	\$ 12,867,200	\$ 11,976,400	\$ 9,898,367	\$ 8,387,267	\$ 11,847,967	\$ 8,724,433	\$ 8,269,533	\$ 8,955,100	\$ 7,603,533	\$ 8,685,400	
<i>Gunnison % Inc(Dec) in sales</i>	11.19%	5.75%	3.75%	0.28%	4.17%	-0.17%	-0.85%	-4.65%	5.80%	0.35%	-7.16%	-7.07%	
Sales - Crested Butte (4%)	\$ 4,799,925	\$ 7,395,125	\$ 6,491,325	\$ 5,056,400	\$ 2,785,550	\$ 2,851,075	\$ 5,669,475	\$ 4,305,700					
<i>Crested Butte % Inc(Dec) in sales</i>	4.16%	2.75%	5.24%	-1.63%	-3.42%	1.86%	0.00%	-1.46%					
Sales - Dillon (2%)	\$ 14,103,650	\$ 18,436,050	\$ 15,942,900	\$ 14,695,100	\$ 13,882,200	\$ 13,921,450	\$ 31,062,300	\$ 19,242,650	\$ 17,054,400	\$ 25,345,900	\$ 12,941,050	\$ 11,638,650	\$ 14,899,350
<i>Dillon % Inc(Dec) in sales</i>	11.88%	15.50%	4.56%	1.81%	26.47%	29.14%	7.63%	-6.07%	-9.18%	17.81%	-24.44%	9.63%	2.13%
												Year-to-date:	-1.93%
Sales - Summit County (2%)	\$ 13,729,700	\$ 15,363,450	\$ 18,969,450	\$ 13,068,750	\$ 10,190,250	\$ 14,837,300	\$ 33,322,850	\$ 34,323,650	\$ 34,734,700	\$ 40,797,250	\$ 11,677,000		
<i>Summit County % Inc(Dec) in sales</i>	14.74%	61.78%	20.75%	3.28%	-0.41%	17.73%	-15.32%	5.98%	10.94%	0.54%	-23.07%		
Sales - Grand Junction (2%)	\$ 151,393,309	\$ 191,667,309	\$ 161,538,727	\$ 162,717,527	\$ 192,482,545	\$ 158,287,273	\$ 159,789,127	\$ 239,470,255	\$ 163,419,382	\$ 147,573,964	\$ 171,562,473	\$ 160,817,236	\$ 178,002,218
<i>Grand Junction % Inc(Dec) in sales</i>	9.04%	12.88%	11.16%	9.27%	13.18%	8.50%	10.07%	14.95%	14.30%	13.55%	-1.02%	8.55%	17.58%
												Year-to-date:	11.18%
Sales - Silverthorne (2%)	\$ 22,321,100	\$ 20,437,450	\$ 20,090,050	\$ 20,668,050	\$ 16,702,350	\$ 18,514,900	\$ 26,832,900	\$ 17,590,050	\$ 18,084,900	\$ 24,470,550	\$ 12,919,250	\$ 13,333,034	\$ 19,123,293
<i>Silverthorne % Inc(Dec) in sales</i>	21.65%	11.54%	9.58%	9.14%	14.69%	18.56%	12.57%	1.65%	9.61%	4.42%	-12.59%	-5.40%	-12.42%
												Year-to-date:	-2.25%
Sales - Avon (4%)	\$ 10,298,150	\$ 11,401,692	\$ 10,614,586	\$ 10,540,182	\$ 9,199,127	\$ 9,058,847	\$ 21,708,334	\$ 13,824,533	\$ 14,357,530	\$ 16,327,386	\$ 8,726,526	\$ 8,030,344	\$ 10,684,293
<i>Avon % Inc(Dec) in sales</i>	9.44%	14.66%	13.66%	10.54%	23.63%	18.60%	12.17%	5.37%	15.55%	14.09%	-2.48%	4.23%	3.75%
												Year-to-date:	7.70%
Sales - Telluride (4.5%)	\$ 9,207,756	\$ 9,970,142	\$ 9,245,594	\$ 8,914,364	\$ 4,595,606	\$ 4,652,947	\$ 12,448,910	\$ 10,952,771	\$ 10,777,407	\$ 12,221,597	\$ 3,404,077	\$ 4,578,134	\$ 10,913,314
<i>Telluride % Inc(Dec) in sales</i>	-5.00%	7.58%	14.35%	-7.30%	0.38%	24.55%	3.62%	9.01%	4.59%	2.83%	-0.99%	4.95%	18.52%
												Year-to-date:	7.32%
Sales - Frisco (4%)	\$ 11,907,025	\$ 13,901,450	\$ 13,212,975	\$ 12,465,350	\$ 10,035,550	\$ 11,724,425	\$ 16,569,300	\$ 14,379,925	\$ 13,982,425	\$ 16,122,675	\$ 10,277,350	\$ 8,831,900	\$ 11,715,825
<i>Frisco % Inc(Dec) in sales</i>	9.57%	6.00%	9.27%	1.56%	5.12%	12.91%	-7.39%	7.99%	0.01%	6.35%	-14.07%	-2.78%	-1.61%
												Year-to-date:	-0.13%
Sales - Estes Park (4%)	\$ 22,373,250	\$ 28,802,950	\$ 25,628,150	\$ 25,229,625	\$ 13,056,800	\$ 9,954,600	\$ 9,398,800	\$ 6,661,406	\$ 7,965,000	\$ 8,455,875	\$ 8,180,622		
<i>Estes % Inc(Dec) in sales</i>	6.78%	7.02%	14.63%	6.24%	9.38%	17.09%	-20.06%	-11.52%	14.60%	17.49%	-29.58%		
Sales - Mtn Village (4.5%)								\$ 7,679,579	\$ 7,671,121	\$ 8,803,598	\$ 3,508,957	\$ 1,944,286	
<i>Mtn Village % Inc(Dec) in sales</i>								-6.96%	-11.07%	-6.52%	77.75%	89.70%	

CAST - Colorado Association of Ski Towns
Taxable Sales (based on Sales/Use tax collected)
2007/2006 to 2008/2007

	June 07/06	July 07/06	Aug. 07/06	Sept. 07/06	Oct. 07/06	Nov. 07/06	Dec. 07/06	Jan. 08/07	Feb. 08/07	Mar. 08/07	Apr. 08/07	May 08/07	June 08/07
Winter Park	37.56%	-0.06%	18.35%	5.04%	12.73%	2.79%	8.12%	12.65%	4.11%	-0.95%	-8.70%	-8.18%	
Aspen	12.62%	7.43%	4.46%	6.03%	18.45%	-1.35%	4.40%	13.73%	12.41%	6.73%	5.55%	7.54%	-2.95%
Breckenridge	19.94%	6.76%	7.42%	5.12%	7.40%	-2.85%	6.82%	1.07%	6.67%	1.57%	-6.95%		
Vail	18.33%	0.84%	10.15%	9.10%	12.06%	-6.47%	1.83%	6.77%	12.79%	11.37%	-17.78%	14.50%	-6.45%
Steamboat Springs	9.75%	3.85%	9.10%	12.63%	12.46%	2.82%	6.82%	5.95%	7.23%	5.00%	-1.79%	11.87%	-1.16%
Glenwood Springs	11.42%	13.24%	12.64%	8.31%	3.75%	10.89%	4.51%	1.29%	4.89%	1.32%	3.52%	3.07%	-3.43%
Snowmass	7.14%	5.61%	15.41%	-2.40%	36.65%	4.96%	-6.27%	10.32%	9.39%	4.85%	-13.81%	22.98%	-11.65%
Gunnison	11.19%	5.75%	3.75%	0.28%	4.17%	-0.17%	-0.85%	-4.65%	5.80%	0.35%	-7.16%	-7.07%	
Crested Butte	4.16%	2.75%	5.24%	-1.63%	-3.42%	1.86%	0.00%	-1.46%					
Dillon	11.88%	15.50%	4.56%	1.81%	26.47%	29.14%	7.63%	-6.07%	-9.18%	17.81%	-24.44%	9.63%	2.13%
Summit County	14.74%	61.78%	20.75%	3.28%	-0.41%	17.73%	-15.32%	5.98%	10.94%	0.54%	-23.07%		
Grand Junction	9.04%	12.88%	11.16%	9.27%	13.18%	8.50%	10.07%	14.95%	14.30%	13.55%	-1.02%	8.55%	17.58%
Silverthorne	21.65%	11.54%	9.58%	9.14%	14.69%	18.56%	12.57%	1.65%	9.61%	4.42%	-12.59%	-5.40%	-12.42%
Avon	9.44%	14.66%	13.66%	10.54%	23.63%	18.60%	12.17%	5.37%	15.55%	14.09%	-2.48%	4.23%	3.75%
Telluride	-5.00%	7.58%	14.35%	-7.30%	0.38%	24.55%	3.62%	9.01%	4.59%	2.83%	-0.99%	4.95%	18.52%
Frisco	9.57%	6.00%	9.27%	1.56%	5.12%	12.91%	-7.39%	7.99%	0.01%	6.35%	-14.07%	-2.78%	-1.61%
Estes Park	6.78%	7.02%	14.63%	6.24%	9.38%	17.09%	-20.06%	-11.52%	14.60%	17.49%	-29.58%		
Mtn Village								-6.96%	-11.07%	-6.52%	77.75%	89.70%	

CAST - Monthly Comparison

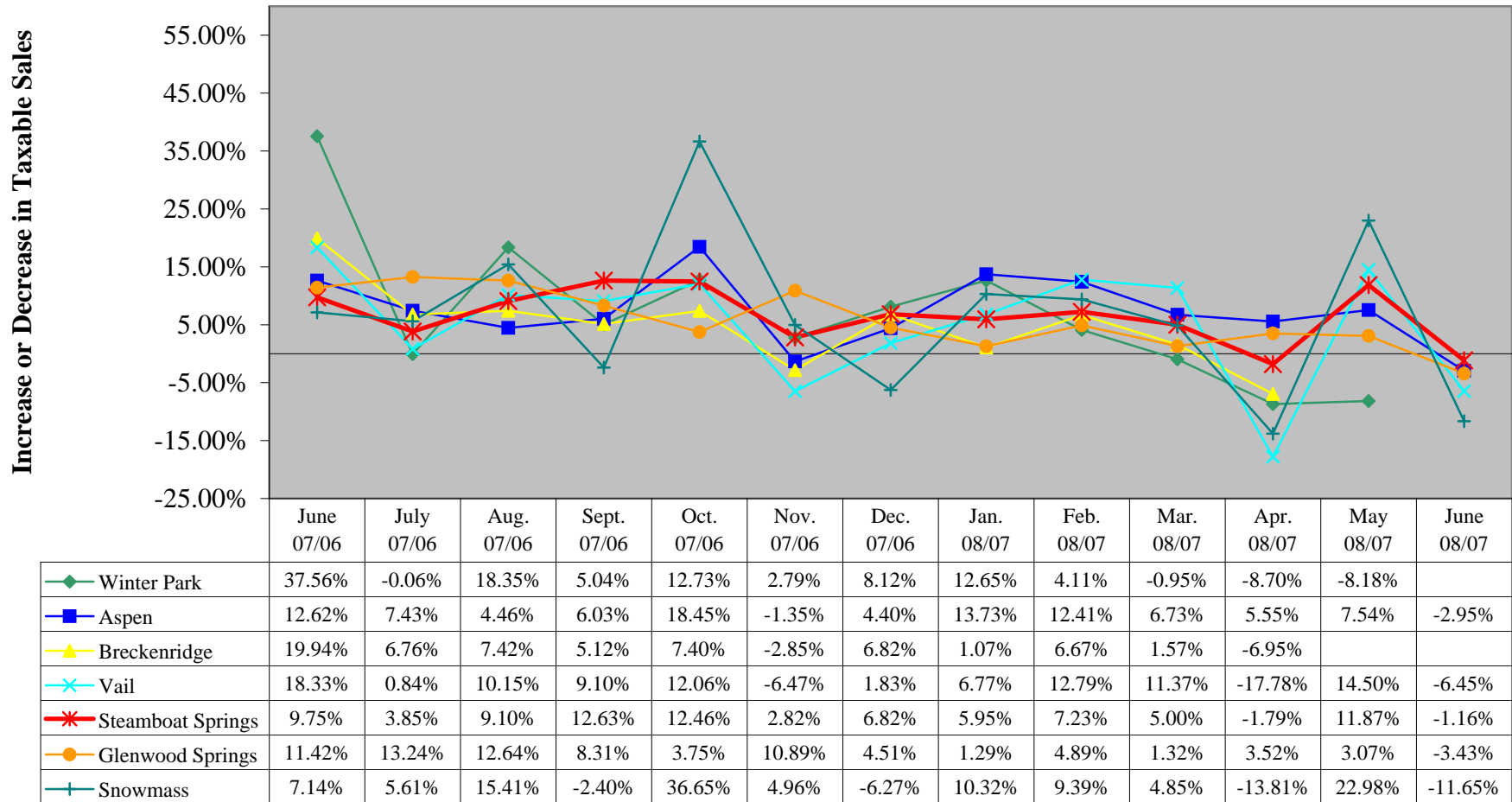


Mountain Communities
Taxable Sales Comparison
2007/2006 to 2008/2007

Actual Mountain Communities' Taxable Sales

	June 2007/2006	July 2007/2006	Aug. 2007/2006	Sept. 2007/2006	Oct. 2007/2006	Nov. 2007/2006	Dec. 2007/2006	Jan. 2008/2007	Feb. 2008/2007	Mar. 2008/2007	Apr. 2008/2007	May 2008/2007	June 2008/2007
Sales - Winter Park (5%)	\$ 5,203,660	\$ 5,462,080	\$ 5,343,380	\$ 4,773,960	\$ 2,921,900	\$ 4,326,440	\$ 14,267,820	\$ 12,822,940	\$ 12,421,840	\$ 17,360,140	\$ 4,661,300	\$ 2,089,000	
	\$ 3,782,960	\$ 5,465,540	\$ 4,514,720	\$ 4,544,800	\$ 2,591,880	\$ 4,208,820	\$ 13,195,840	\$ 11,382,580	\$ 11,931,640	\$ 17,526,960	\$ 5,105,520	\$ 2,275,040	
<i>Winter Park % Inc(Dec) in sales</i>	37.56%	-0.06%	18.35%	5.04%	12.73%	2.79%	8.12%	12.65%	4.11%	-0.95%	-8.70%	-8.18%	
Sales - Aspen (2.2%)	\$ 39,155,864	\$ 52,094,818	\$ 46,806,682	\$ 35,917,000	\$ 22,714,182	\$ 21,217,500	\$ 76,078,773	\$ 65,846,455	\$ 61,818,227	\$ 67,212,773	\$ 23,851,273	\$ 18,356,500	\$ 38,002,091
	\$ 34,768,409	\$ 48,489,727	\$ 44,807,500	\$ 33,873,045	\$ 19,176,955	\$ 21,507,364	\$ 72,872,818	\$ 57,896,045	\$ 54,994,227	\$ 62,973,182	\$ 22,596,455	\$ 17,069,545	\$ 39,155,864
<i>Aspen % Inc(Dec) in sales</i>	12.62%	7.43%	4.46%	6.03%	18.45%	-1.35%	4.40%	13.73%	12.41%	6.73%	5.55%	7.54%	-2.95%
													Year-to-date: 8.01%
Sales - Breckenridge (2.5%)	\$ 20,582,804	\$ 25,770,664	\$ 23,651,510	\$ 21,219,796	\$ 14,644,972	\$ 17,878,532	\$ 50,642,289	\$ 45,077,293	\$ 46,738,166	\$ 57,926,635	\$ 22,119,941		
	\$ 17,160,970	\$ 24,139,228	\$ 22,017,921	\$ 20,186,131	\$ 13,635,497	\$ 18,403,648	\$ 47,408,091	\$ 44,599,942	\$ 43,814,052	\$ 57,028,578	\$ 23,772,341		
<i>Breckenridge % Inc(Dec) in sales</i>	19.94%	6.76%	7.42%	5.12%	7.40%	-2.85%	6.82%	1.07%	6.67%	1.57%	-6.95%		
Sales - Steamboat Springs (4%)	\$ 37,789,375	\$ 41,922,275	\$ 39,171,450	\$ 36,827,125	\$ 32,040,500	\$ 27,885,550	\$ 63,574,175	\$ 54,156,025	\$ 54,472,200	\$ 64,312,475	\$ 24,959,325	\$ 28,390,250	\$ 37,352,875
	\$ 34,431,725	\$ 40,367,675	\$ 35,902,875	\$ 32,696,125	\$ 28,491,200	\$ 27,121,450	\$ 59,517,200	\$ 51,116,525	\$ 50,800,850	\$ 61,248,425	\$ 25,415,025	\$ 25,377,525	\$ 37,789,375
<i>Steamboat % Inc(Dec) in sales</i>	9.75%	3.85%	9.10%	12.63%	12.46%	2.82%	6.82%	5.95%	7.23%	5.00%	-1.79%	11.87%	-1.16%
													Year-to-date: 4.73%
Sales - Vail (4%)	\$ 23,825,425	\$ 31,644,525	\$ 29,068,650	\$ 22,707,950	\$ 17,212,975	\$ 18,696,925	\$ 70,546,775	\$ 74,292,525	\$ 76,657,750	\$ 83,147,375	\$ 27,352,675	\$ 15,625,000	\$ 22,289,250
	\$ 20,134,050	\$ 31,381,075	\$ 26,390,350	\$ 20,813,725	\$ 15,359,900	\$ 19,989,550	\$ 69,281,450	\$ 69,582,650	\$ 67,966,075	\$ 74,661,150	\$ 33,268,500	\$ 13,646,850	\$ 23,825,425
<i>Vail % Inc(Dec) in sales</i>	18.33%	0.84%	10.15%	9.10%	12.06%	-6.47%	1.83%	6.77%	12.79%	11.37%	-17.78%	14.50%	-6.45%
													Year-to-date: 5.80%
Sales - Glenwood (3.7%)	\$ 43,269,351	\$ 39,746,378	\$ 39,902,108	\$ 41,660,703	\$ 34,269,162	\$ 35,014,811	\$ 48,455,973	\$ 31,431,216	\$ 30,797,622	\$ 36,684,838	\$ 32,348,784	\$ 36,543,378	\$ 41,801,514
	\$ 38,833,973	\$ 35,099,108	\$ 35,424,351	\$ 38,463,676	\$ 33,031,919	\$ 31,577,324	\$ 46,365,405	\$ 31,031,595	\$ 29,363,027	\$ 36,206,919	\$ 31,249,081	\$ 35,454,514	\$ 43,284,108
<i>Glenwood % Inc(Dec) in sales</i>	11.42%	13.24%	12.64%	8.31%	3.75%	10.89%	4.51%	1.29%	4.89%	1.32%	3.52%	3.07%	-3.43%
													Year-to-date: 1.46%
Sales - Snowmass (1%)	\$ 5,351,715	\$ 7,267,287	\$ 7,804,971	\$ 5,519,200	\$ 3,551,228	\$ 3,997,945	\$ 19,078,886	\$ 27,322,115	\$ 25,540,857	\$ 27,932,256	\$ 5,916,800	\$ 2,867,915	\$ 4,782,686
	\$ 4,995,057	\$ 6,880,972	\$ 6,762,571	\$ 5,654,914	\$ 2,598,743	\$ 3,809,171	\$ 20,354,258	\$ 24,766,886	\$ 23,347,658	\$ 26,639,800	\$ 6,864,771	\$ 2,332,001	\$ 5,413,258
<i>Snowmass % Inc(Dec) in sales</i>	7.14%	5.61%	15.41%	-2.40%	36.65%	4.96%	-6.27%	10.32%	9.39%	4.85%	-13.81%	22.98%	-11.65%
													Year-to-date: 5.59%

Mountain Community - Monthly Comparison



Note:

Data for Winter Park June 08/07 and Breckenridge June-May 08/07 was unavailable at the time of this report