



## February 2017 Taxes, Remitted in March 2017 Sales, Use, and Accommodation Tax Report

This City of Steamboat Springs Sales, Use, and Accommodation Tax Report examines tax collections for the month of February 2017, which were remitted to the City in March 2017.

---

### Sales Tax

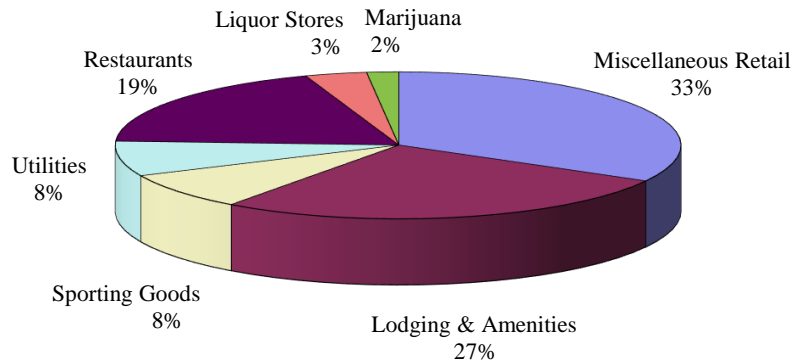
February 2017 sales tax collections decreased by 1.08% compared to February 2016.  
Year-to-date total sales tax collections are 1.98% higher than those of 2016 year-to-date.

Sales Tax February 2017	Sales Tax February 2016	% increase/decrease over last February
\$2,367,050	\$2,392,975	-1.08%

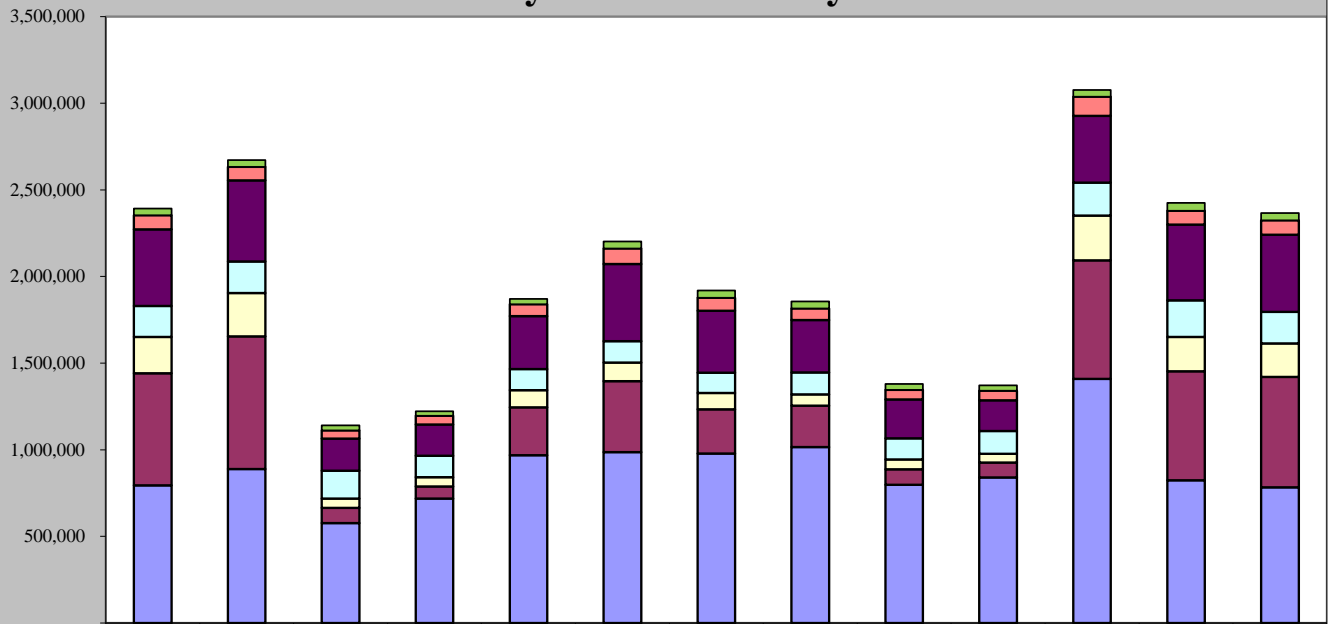
  

Sales Tax 2017 YTD	Sales Tax 2016 YTD	% increase/decrease over prior Year to Date
\$4,791,680	\$4,698,672	1.98%

## February 2017 Sales Categories



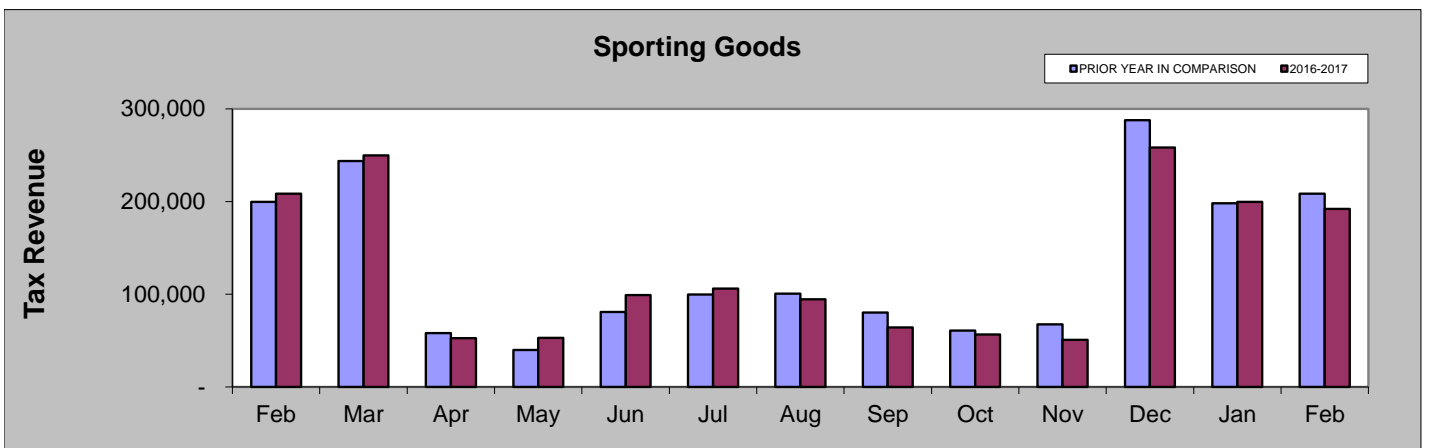
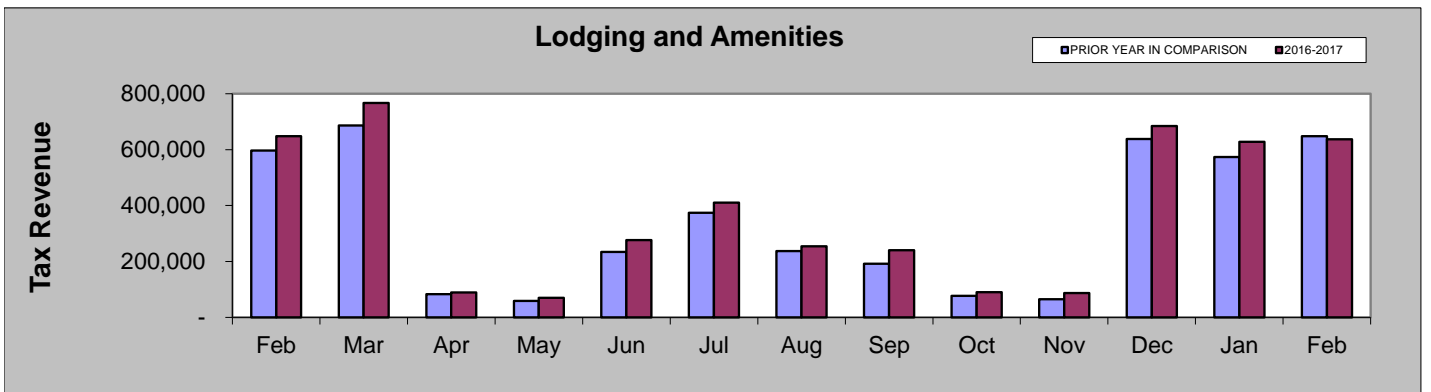
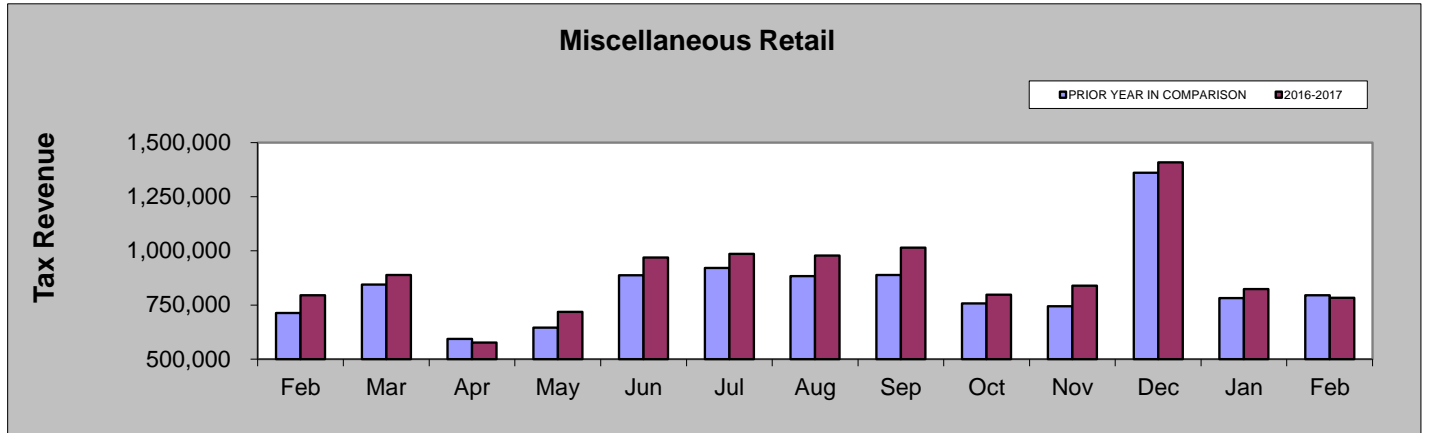
## February 2016 - February 2017

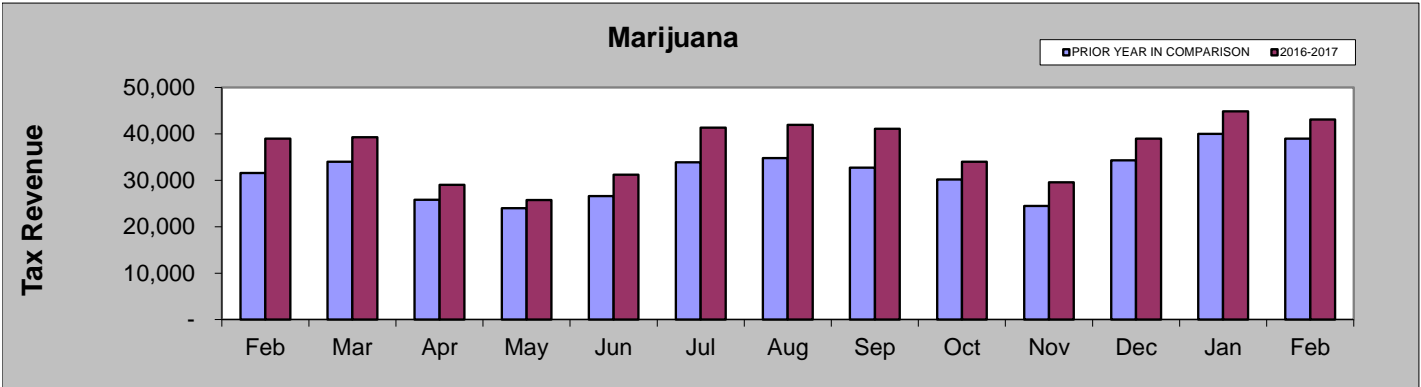
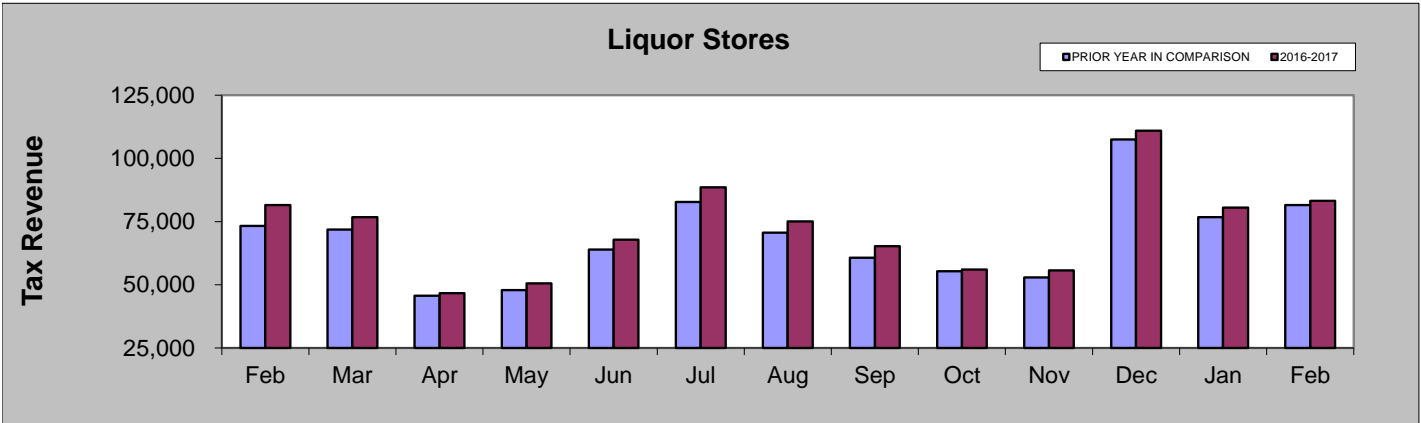
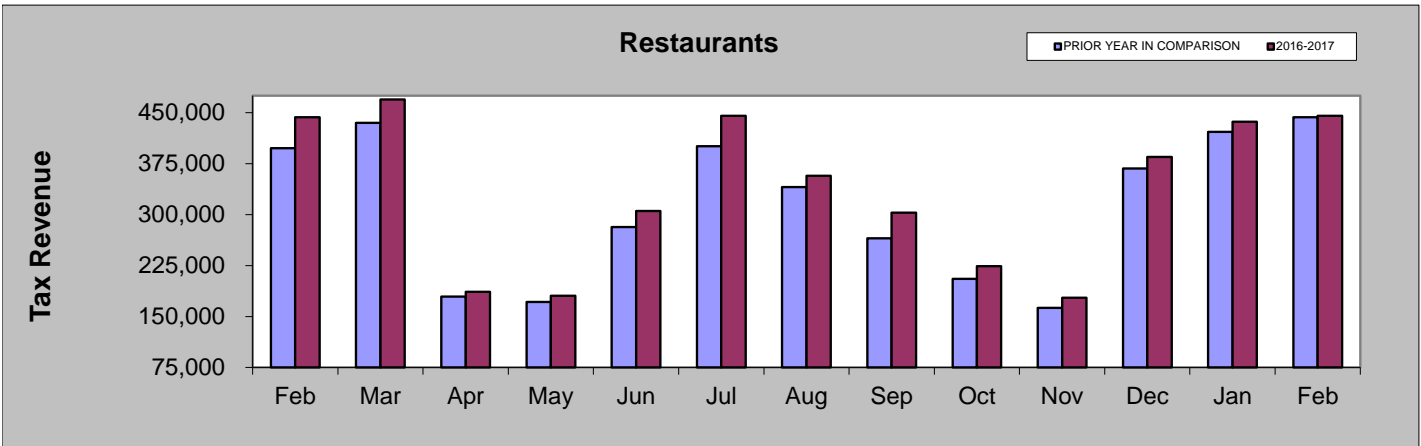
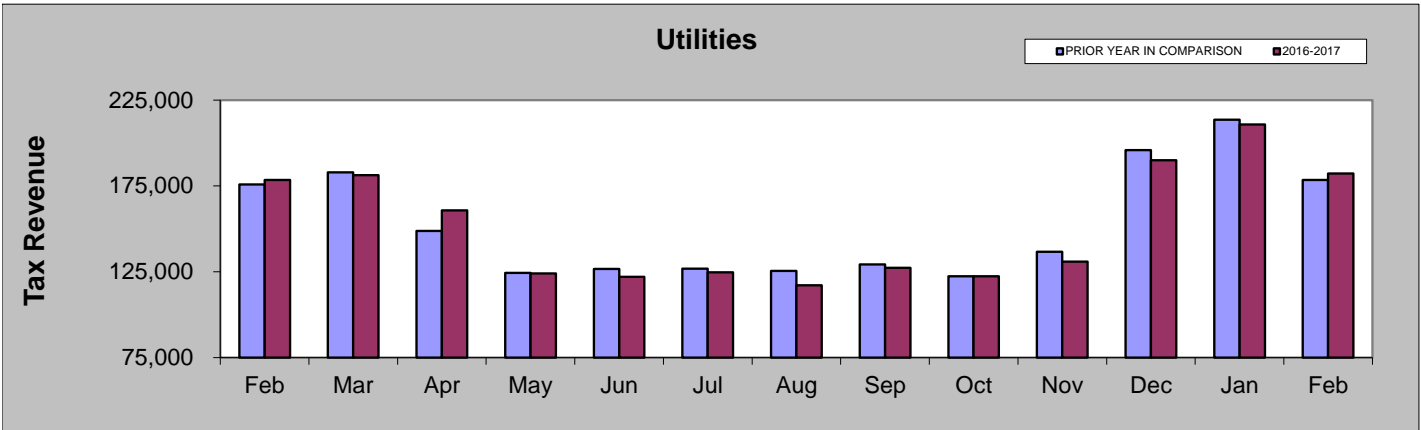


	Feb-16	Mar-16	Apr-16	May-16	Jun-16	Jul-16	Aug-16	Sep-16	Oct-16	Nov-16	Dec-16	Jan-17	Feb-17
Marijuana	38,947	39,286	28,993	25,725	31,236	41,330	41,945	41,094	34,015	29,593	38,972	44,878	43,110
Liquor Stores	81,515	76,793	46,722	50,518	67,857	88,604	75,025	65,278	56,043	55,694	110,973	80,551	83,172
Restaurants	443,206	469,299	186,378	180,452	305,358	445,376	357,261	302,787	223,958	177,501	384,647	436,596	445,372
Utilities	178,515	181,218	160,754	124,074	122,044	124,627	117,128	127,326	122,403	130,979	189,984	210,891	182,260
Sporting Goods	208,534	249,929	52,496	52,928	99,139	106,007	94,631	64,079	56,601	50,672	258,248	199,654	191,995
Lodging & Amenities	647,761	766,681	88,843	70,373	276,088	410,342	254,247	239,924	89,699	86,915	684,143	628,457	637,323
Miscellaneous Retail	794,497	888,180	576,259	718,150	968,991	986,122	978,402	1,015,271	797,360	839,597	1,409,358	823,602	783,817

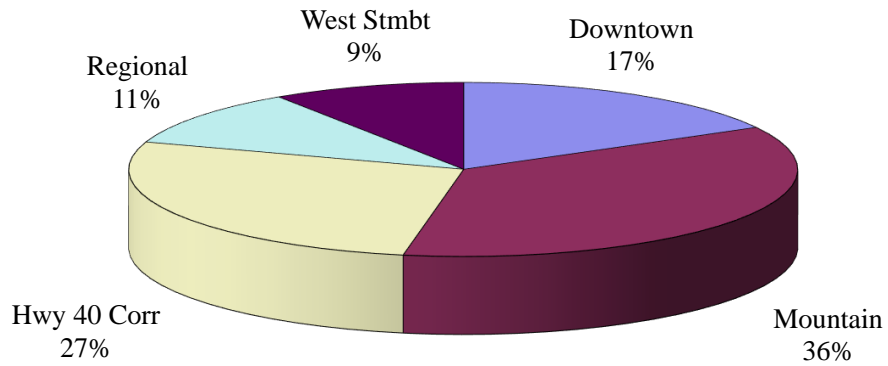
### FEBRUARY COMPARISON BY CATEGORY

	2017	2016	% change
Miscellaneous Retail	\$783,817	\$794,497	-1.34%
Lodging and Amenities	\$637,323	\$647,761	-1.61%
Sporting Goods	\$191,995	\$208,534	-7.93%
Utilities	\$182,260	\$178,515	2.10%
Restaurants	\$445,372	\$443,206	0.49%
Liquor Stores	\$83,172	\$81,515	2.03%
Marijuana	\$43,110	\$38,947	10.69%

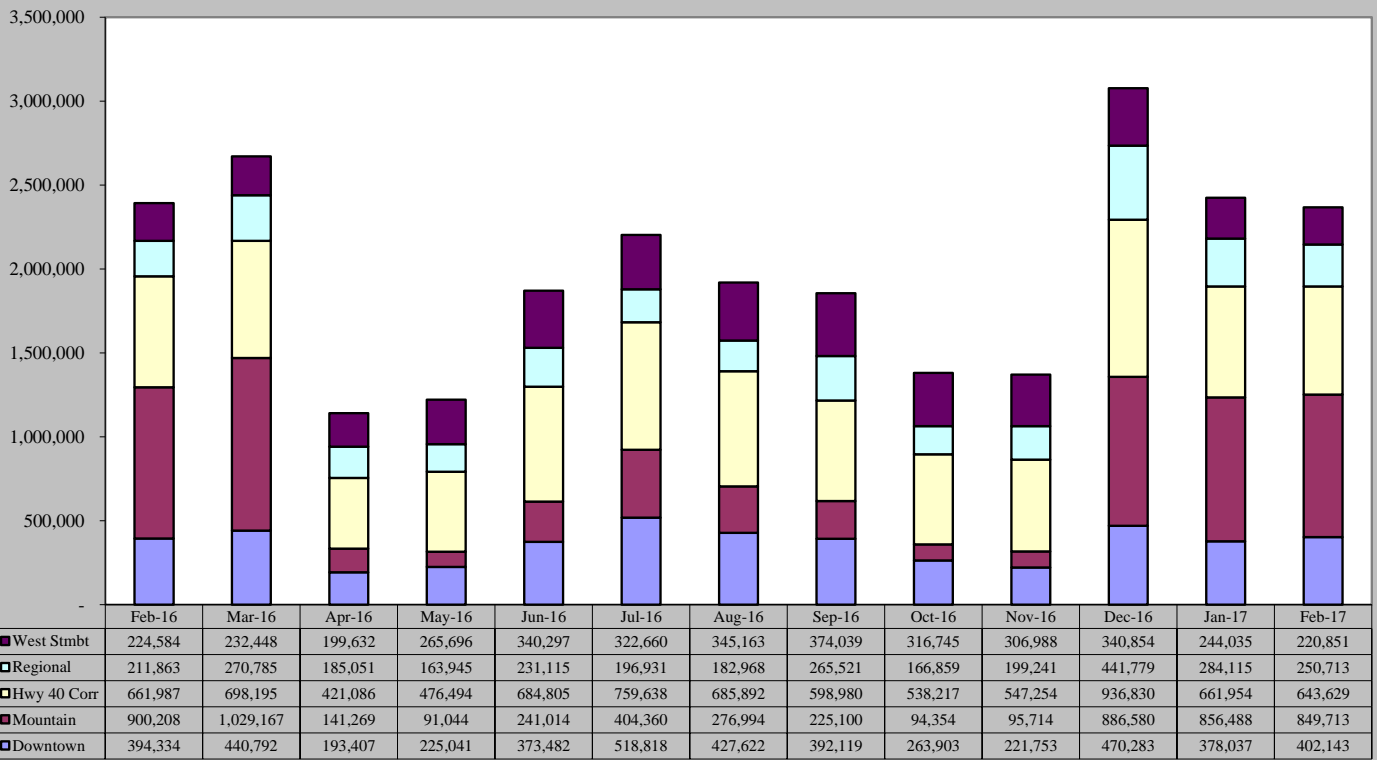




## February 2017 Sales Tax By Area

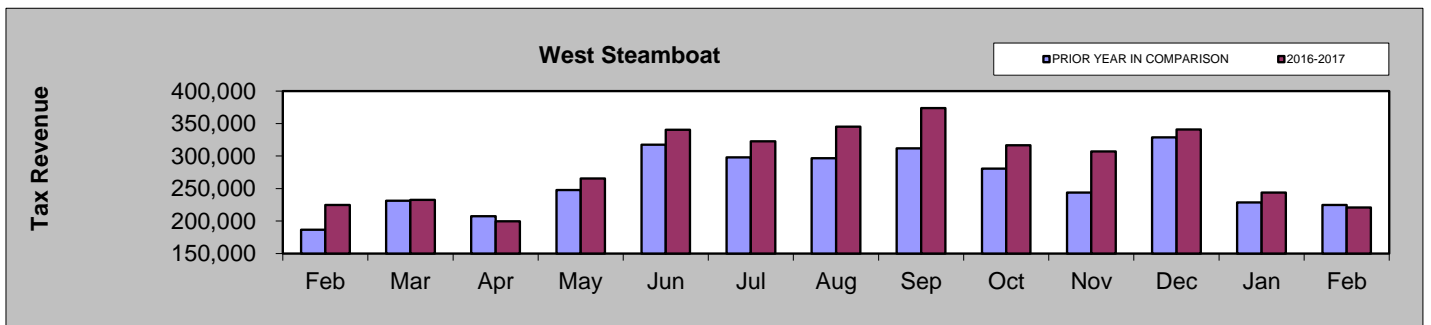
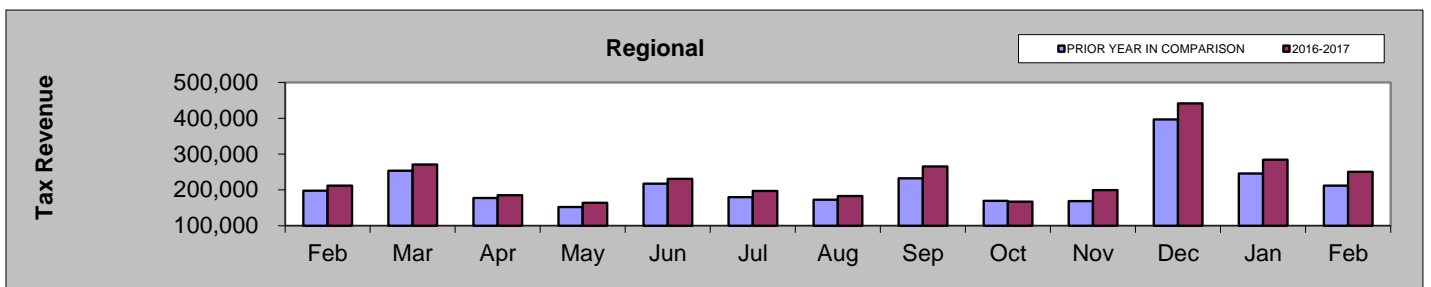
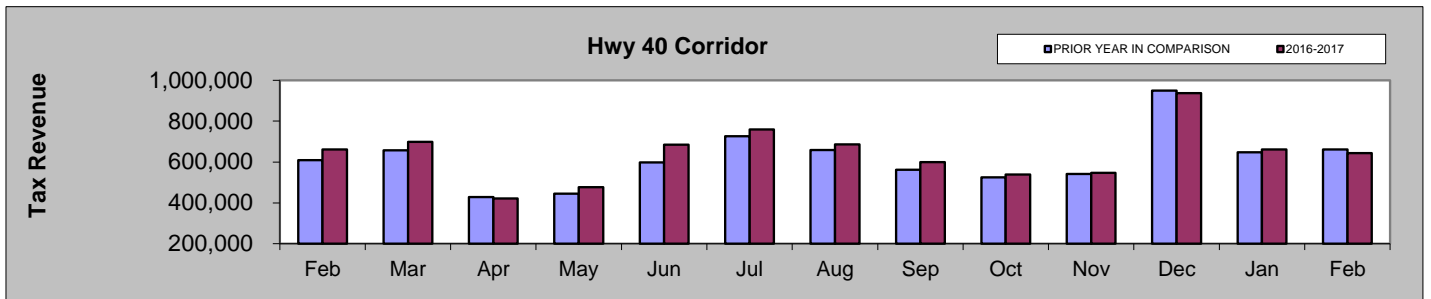
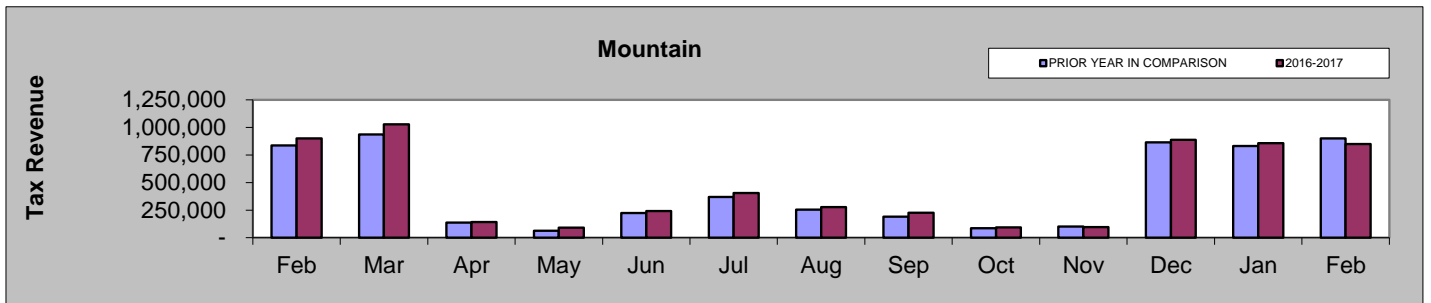
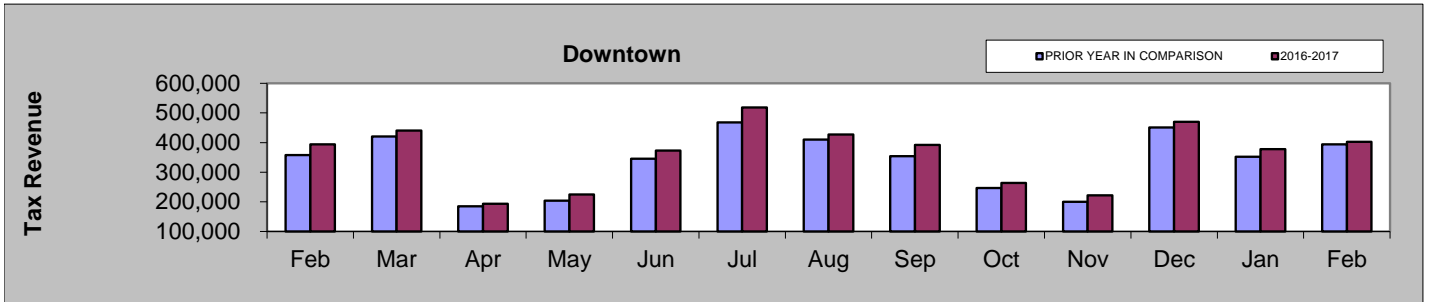


## February 2016 - February 2017



## FEBRUARY COMPARISON BY AREA

Area	2017	2016	% change
<b>Downtown</b>	\$402,143	\$394,334	1.98%
<b>Mountain</b>	\$849,713	\$900,208	-5.61%
<b>Hwy 40 Corridor</b>	\$643,629	\$661,987	-2.77%
<b>Regional</b>	\$250,713	\$211,863	18.34%
<b>West Steamboat</b>	\$220,851	\$224,584	-1.66%

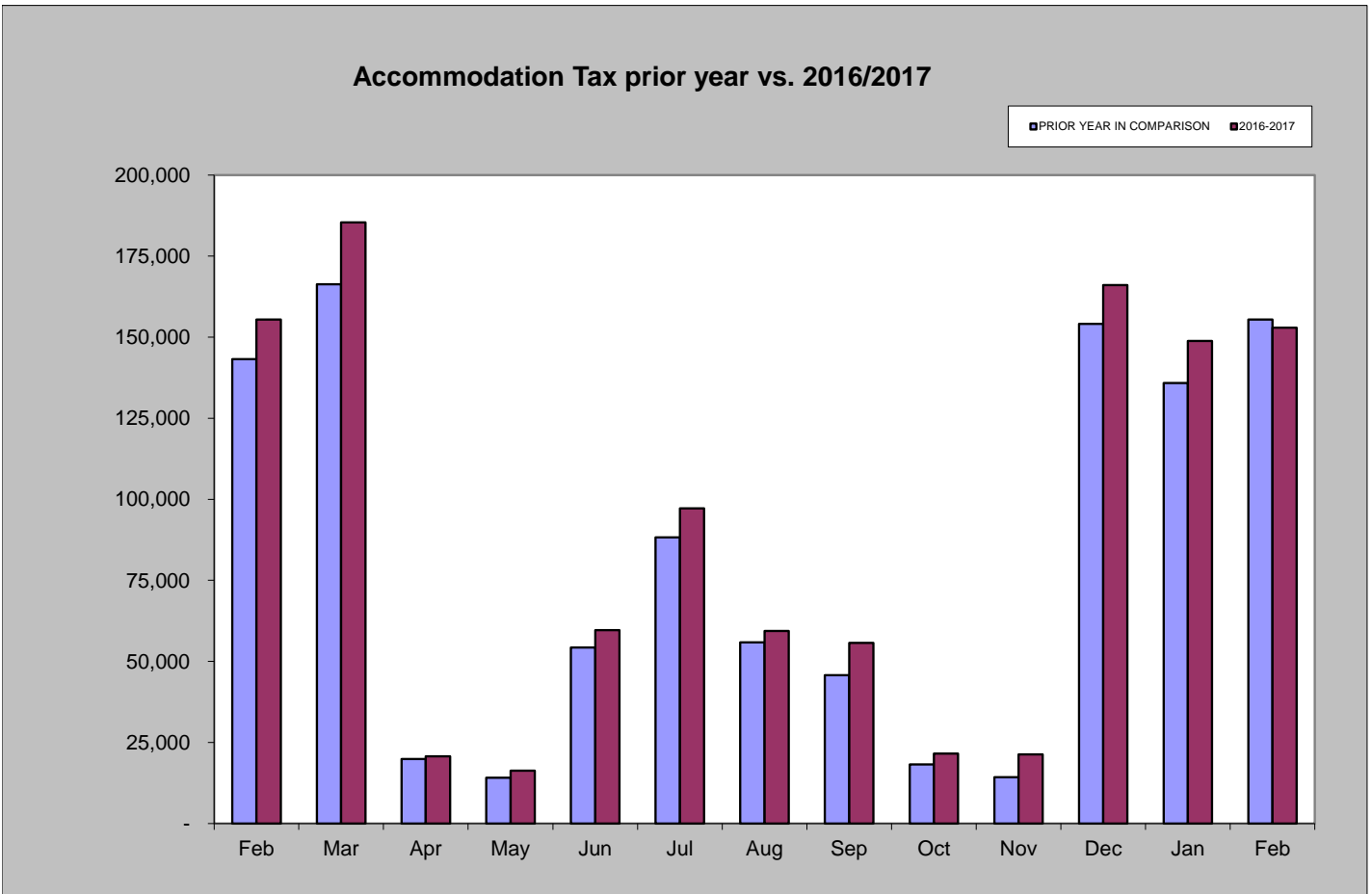


# Accommodation Tax

February 2017 accommodation tax collections decreased by 1.65% compared to February 2016.  
 Year-to-date accommodation tax collections are 3.57% higher than those of 2016 year-to-date.

Accommodation Tax February 2017	Accommodation Tax February 2016	% increase/decrease over last February
\$152,905	\$155,462	-1.65%

Accommodation Tax 2017 YTD	Accommodation Tax 2016 YTD	% increase/decrease over prior Year to Date
\$301,725	\$291,331	3.57%

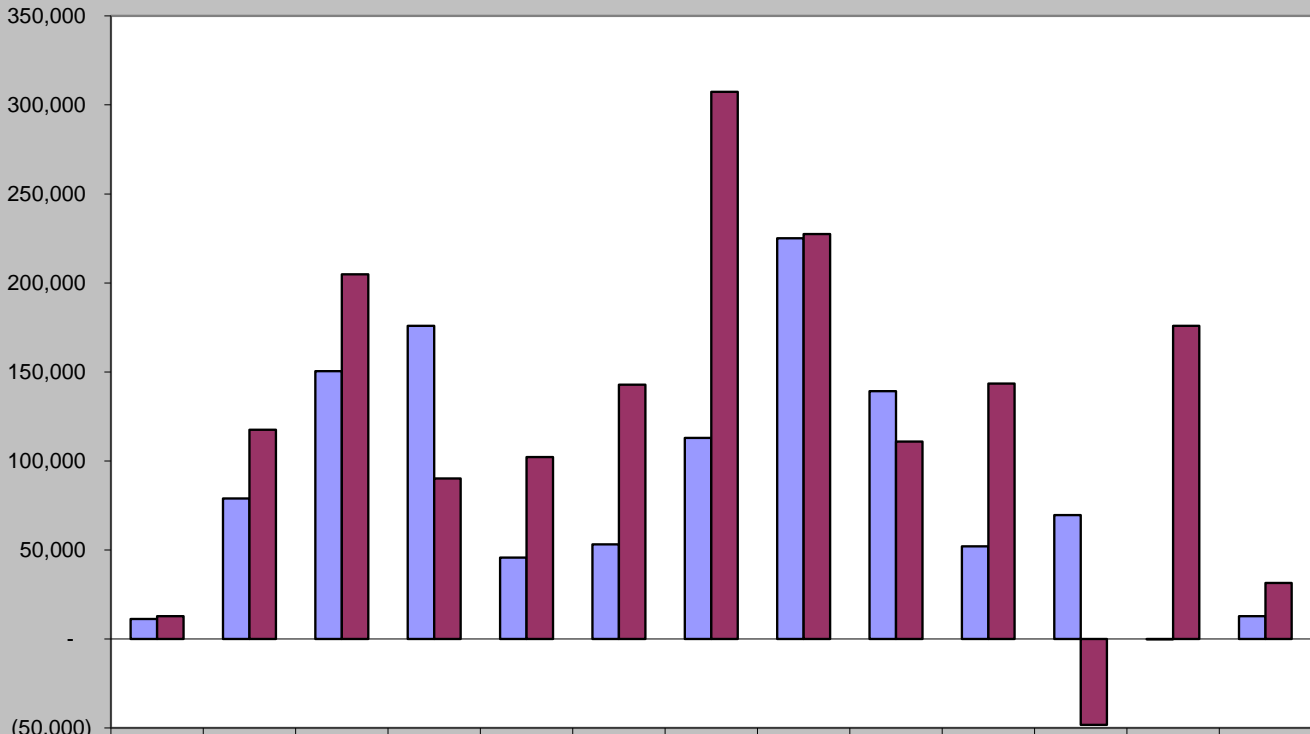


# Building Use Tax

February 2017 building use tax collections are \$31,450

Building Use Tax February 2017	Building Use Tax February 2016	% increase/decrease over last February
\$31,450	\$12,806	146%

## Building Use Tax - prior year vs. 2016/2017

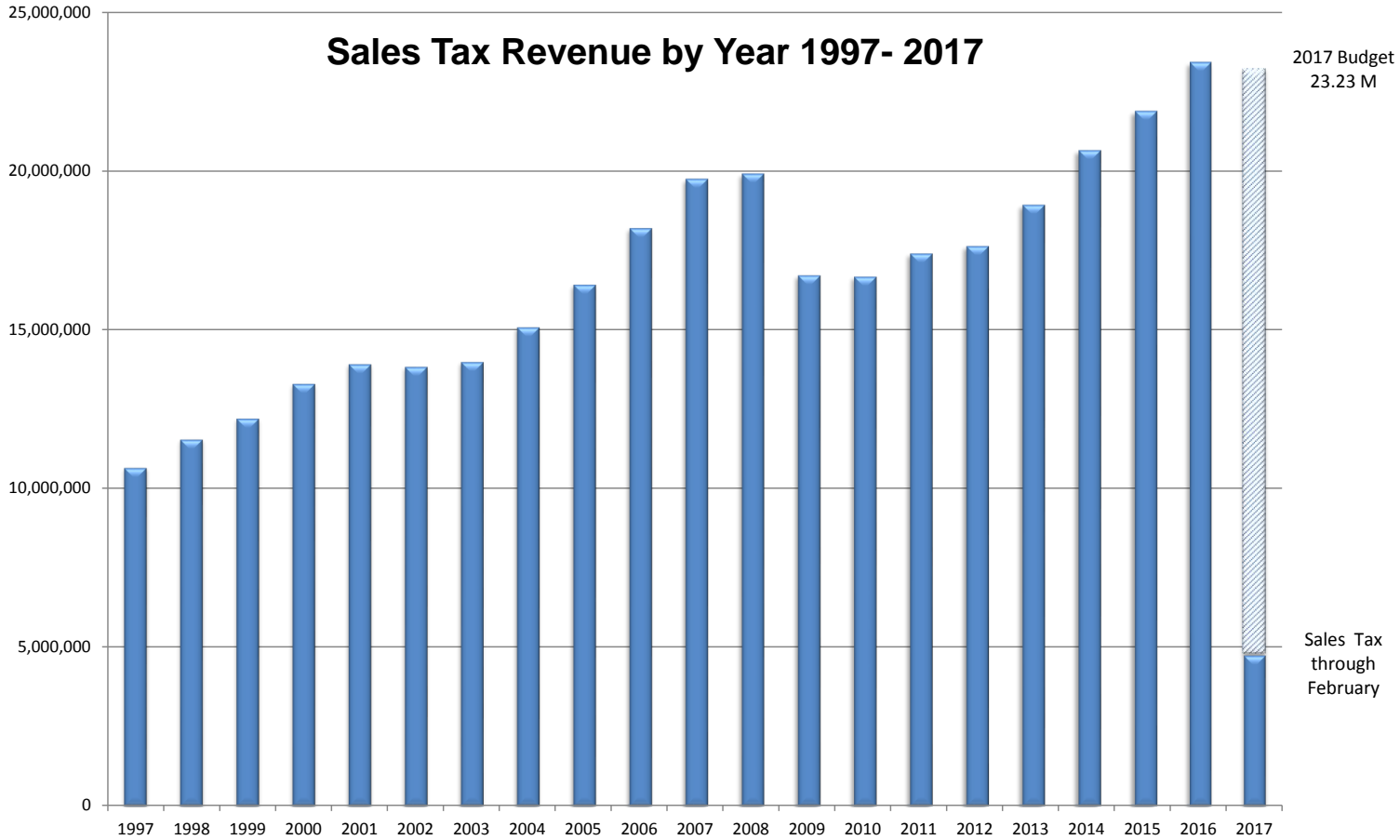


	Feb	Mar	Apr	May	Jun	Jul	Aug	Sep	Oct	Nov	Dec	Jan	Feb
■ PRIOR YEAR	11,247	78,961	150,491	175,885	45,725	53,106	112,920	225,157	139,199	51,966	69,642	(31)	12,806
■ 2016-2017	12,806	117,536	204,881	90,127	102,180	142,890	307,375	227,399	110,845	143,485	(48,275)	175,816	31,450





## Sales Tax Revenue by Year 1997- 2017



Totals by Year	
<b>1997</b>	\$ 10,672,320
<b>1998</b>	\$ 11,559,068
<b>1999</b>	\$ 12,218,807
<b>2000</b>	\$ 13,304,983
<b>2001</b>	\$ 13,921,749
<b>2002</b>	\$ 13,841,283
<b>2003</b>	\$ 13,994,753
<b>2004</b>	\$ 15,079,016
<b>2005</b>	\$ 16,415,430
<b>2006</b>	\$ 18,192,298
<b>2007</b>	\$ 19,743,507
<b>2008</b>	\$ 19,904,293
<b>2009</b>	\$ 16,710,291
<b>2010</b>	\$ 16,669,735
<b>2011</b>	\$ 17,398,312
<b>2012</b>	\$ 17,632,019
<b>2013</b>	\$ 18,922,955
<b>2014</b>	\$ 20,635,678
<b>2015</b>	\$ 21,874,558
<b>2016</b>	\$ 23,407,596
<b>* 2017</b>	\$ 4,791,680

\* 2017 total is year-to-date through February