



January 2017 Taxes, Remitted in February 2017 Sales, Use, and Accommodation Tax Report

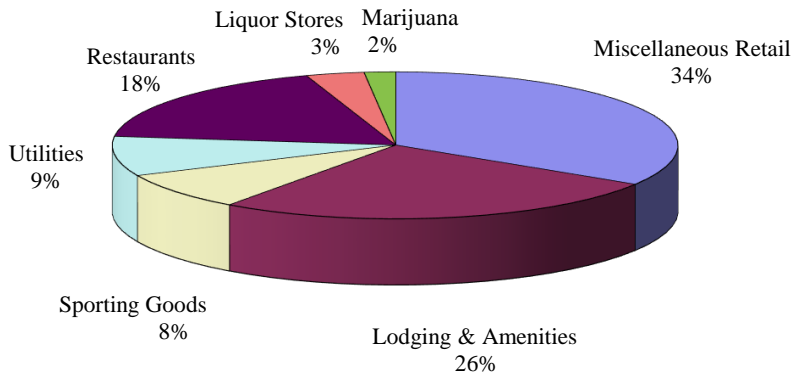
This City of Steamboat Springs Sales, Use, and Accommodation Tax Report examines tax collections for the month of January 2017, which were remitted to the City in February 2017.

Sales Tax

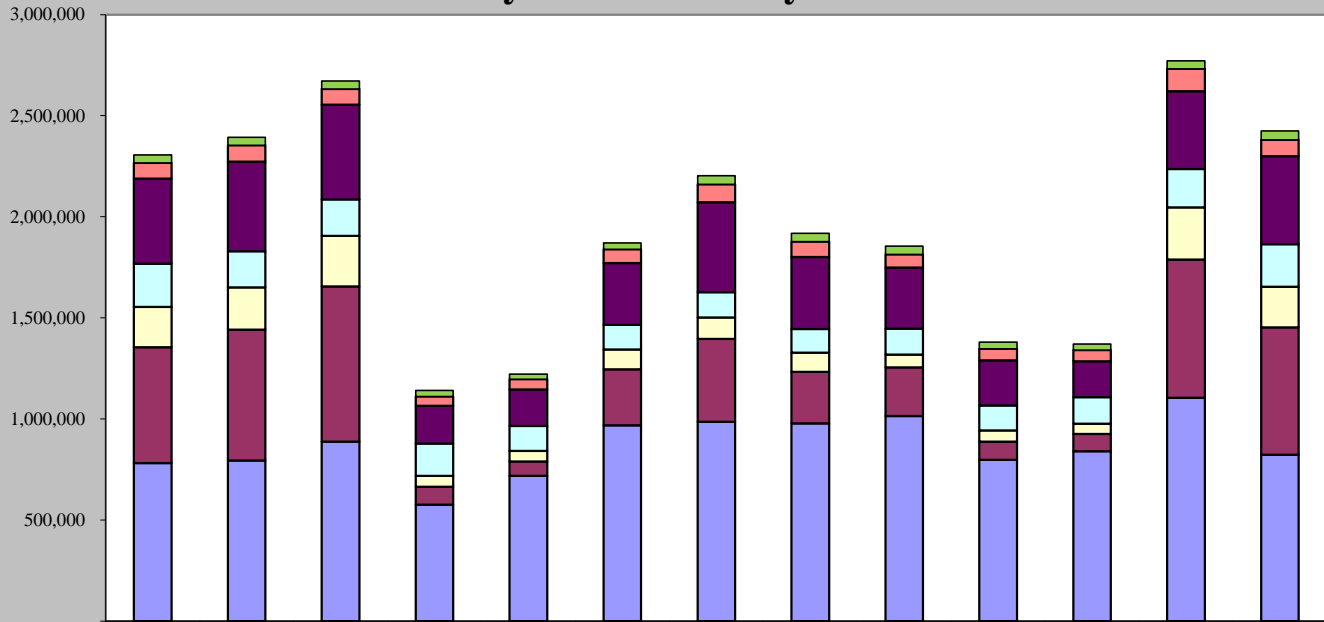
January 2017 sales tax collections increased by 5.15% compared to January 2016.

Sales Tax January 2017	Sales Tax January 2016	% increase/decrease over last January
\$2,424,193	\$2,305,525	5.15%

January 2017 Sales Categories



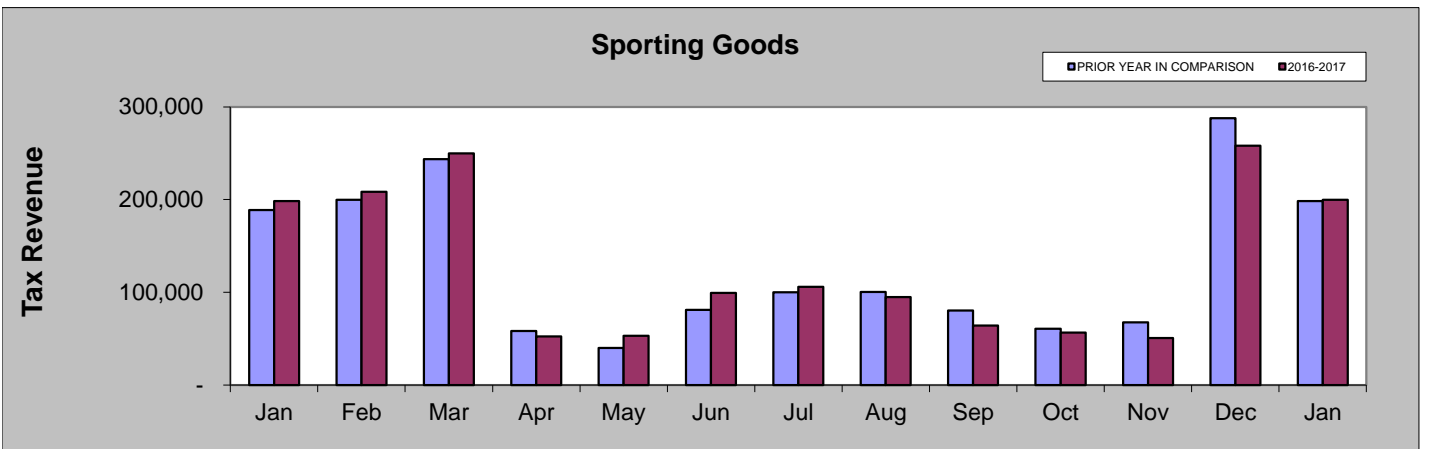
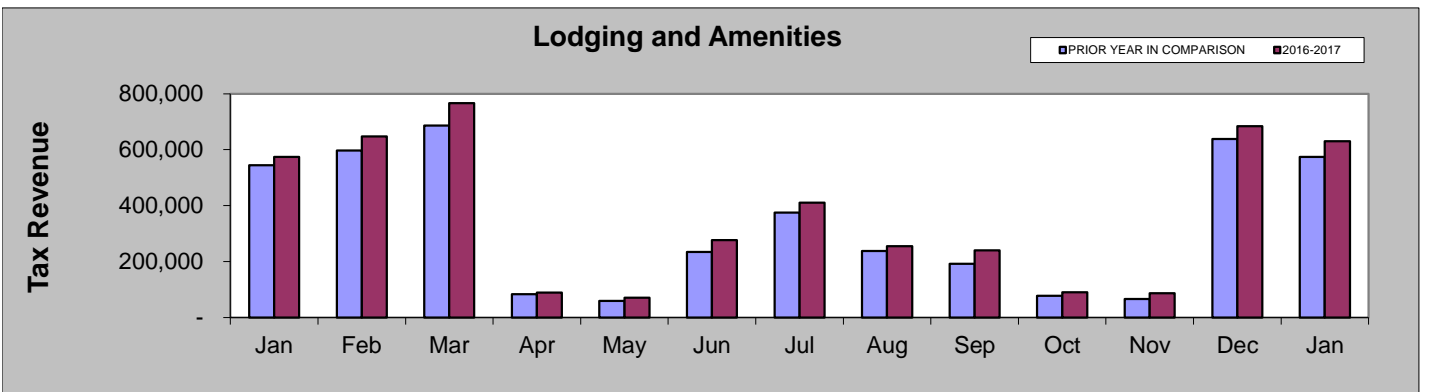
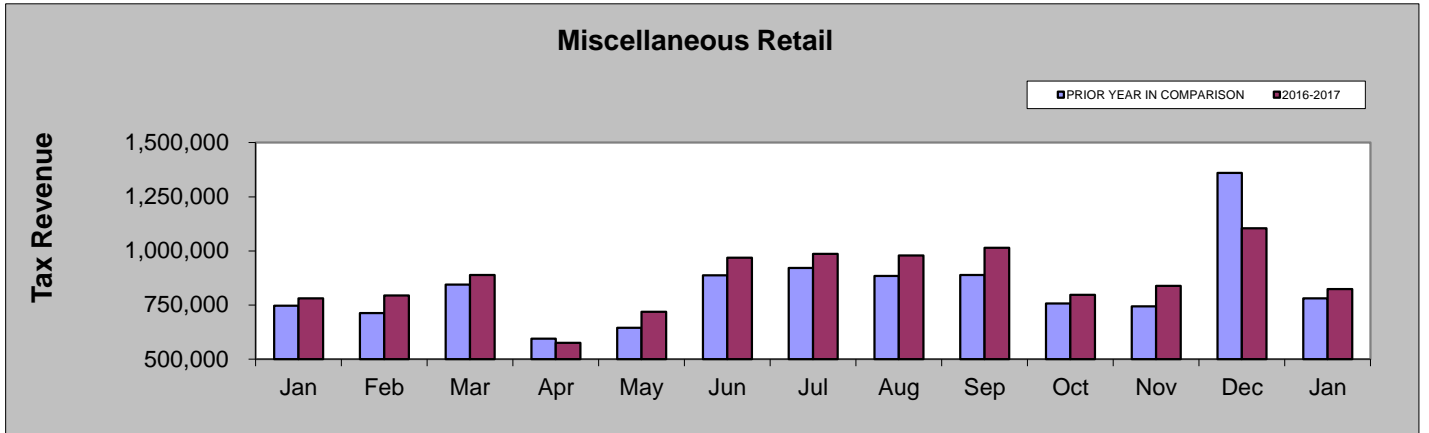
January 2016 - January 2017

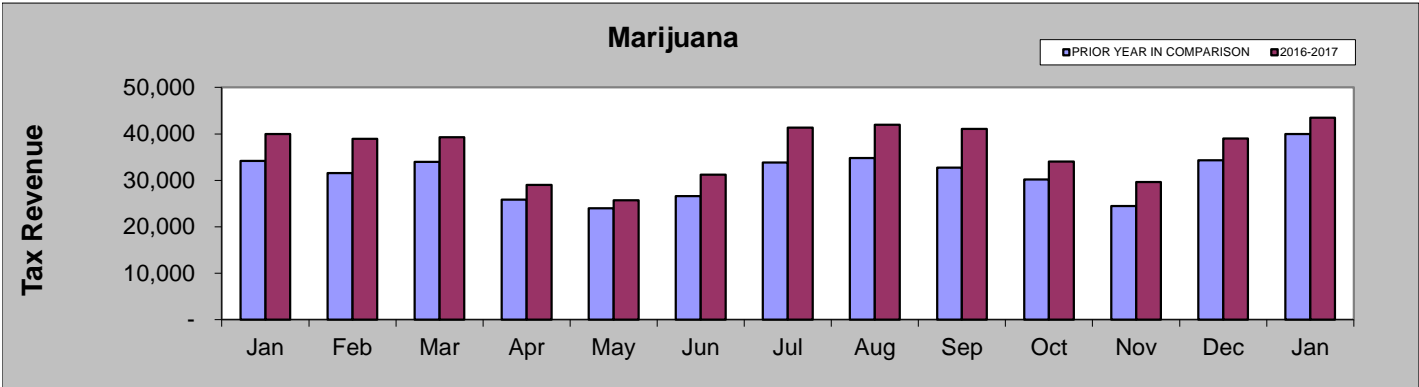
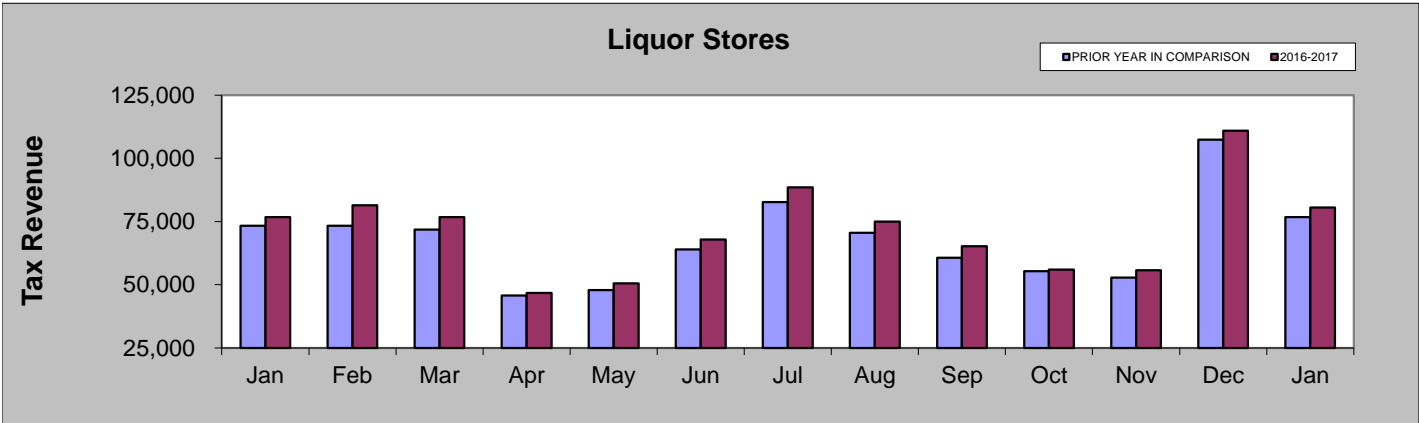
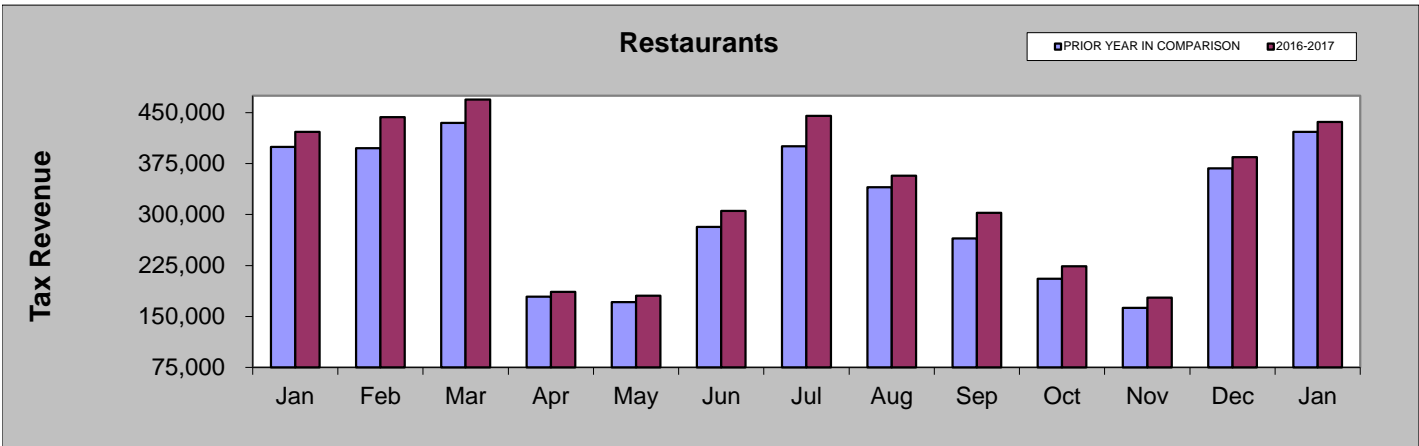
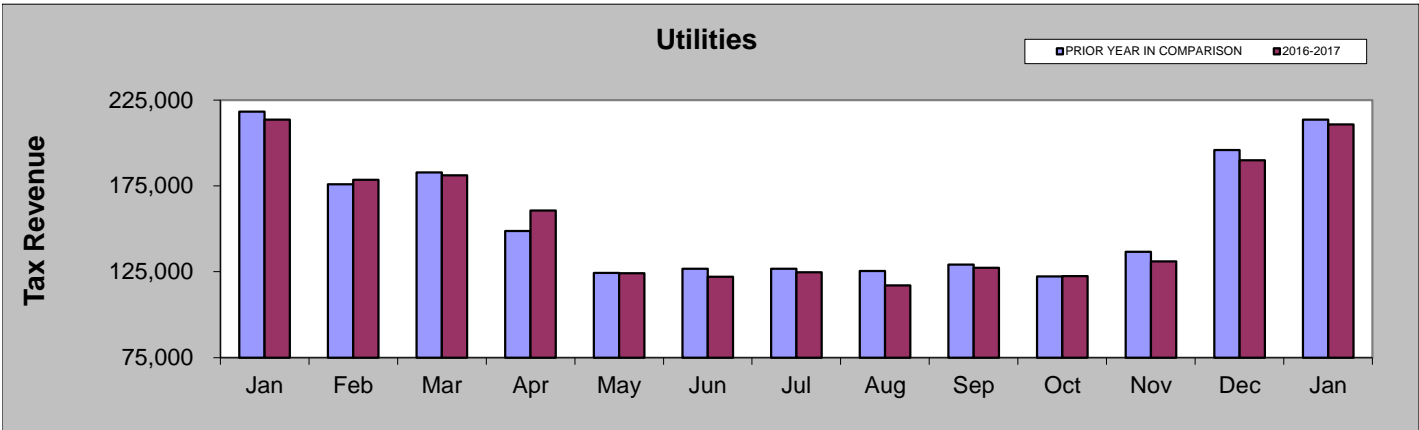


	Jan-16	Feb-16	Mar-16	Apr-16	May-16	Jun-16	Jul-16	Aug-16	Sep-16	Oct-16	Nov-16	Dec-16	Jan-17
Marijuana	39,977	38,947	39,286	28,993	25,725	31,236	41,330	41,945	41,094	34,015	29,593	38,972	43,504
Liquor Stores	76,759	81,515	76,793	46,722	50,518	67,857	88,604	75,025	65,278	56,043	55,694	110,973	80,551
Restaurants	421,901	443,206	469,299	186,378	180,452	305,358	445,376	357,261	302,787	223,958	177,501	384,442	436,286
Utilities	213,594	178,515	181,218	160,754	124,074	122,044	124,627	117,128	127,326	122,403	130,979	189,978	210,891
Sporting Goods	198,291	208,534	249,929	52,496	52,928	99,139	106,007	94,631	64,079	56,601	50,672	258,248	199,654
Lodging & Amenities	573,727	647,761	766,681	88,843	70,373	276,088	410,342	254,247	239,924	89,699	86,915	683,524	630,159
Miscellaneous Retail	781,276	794,286	887,964	576,063	718,143	968,509	985,935	978,216	1,014,572	797,163	839,129	1,104,694	823,147

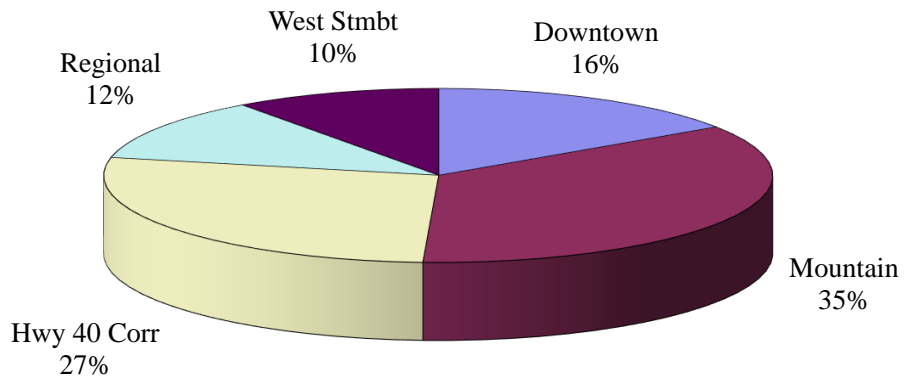
JANUARY COMPARISON BY CATEGORY

	2017	2016	% change
Miscellaneous Retail	\$823,147	\$781,276	5.36%
Lodging and Amenities	\$630,159	\$573,727	9.84%
Sporting Goods	\$199,654	\$198,291	0.69%
Utilities	\$210,891	\$213,594	-1.27%
Restaurants	\$436,286	\$421,901	3.41%
Liquor Stores	\$80,551	\$76,759	4.94%
Marijuana	\$43,504	\$39,977	8.82%

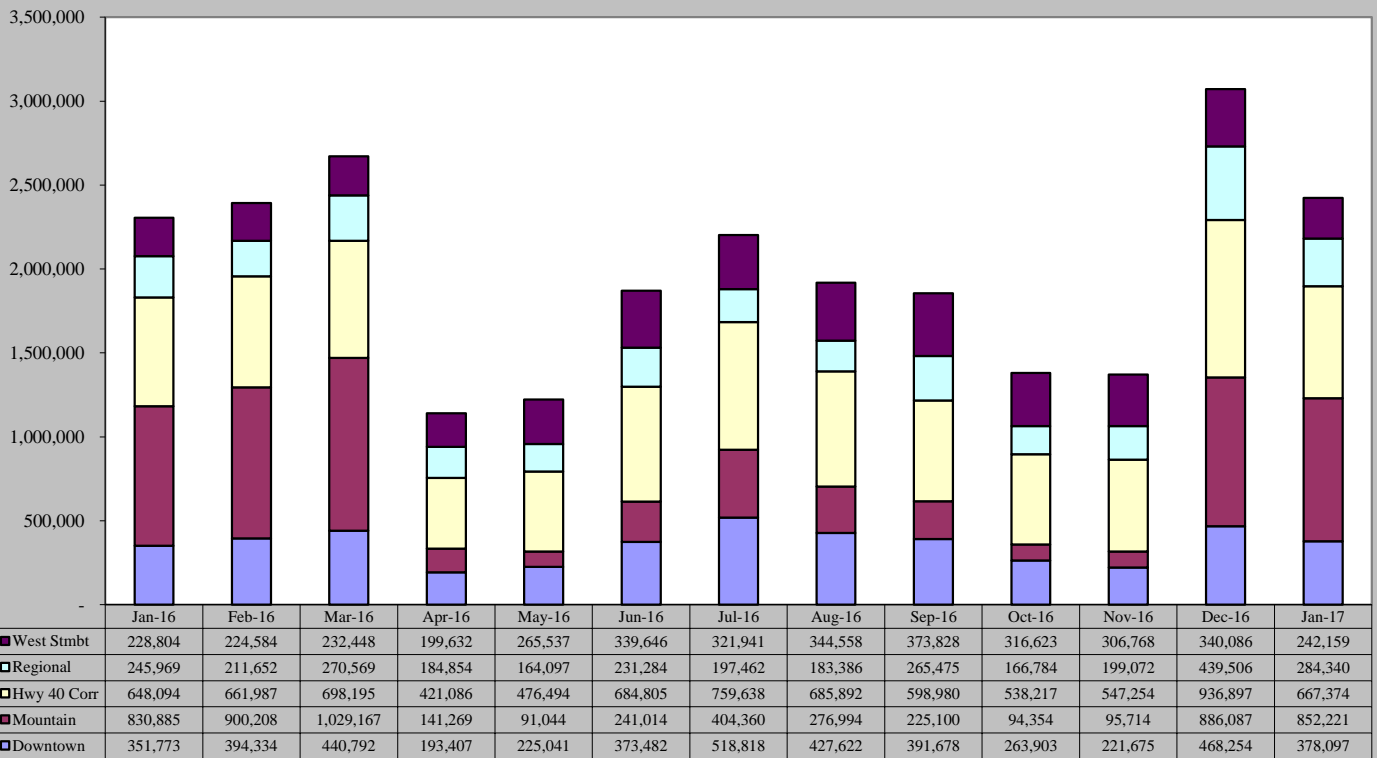




January 2017 Sales Tax By Area

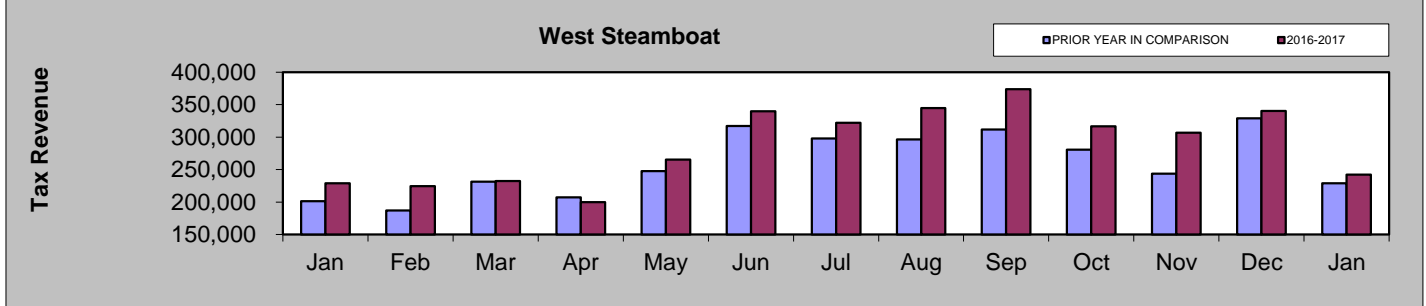
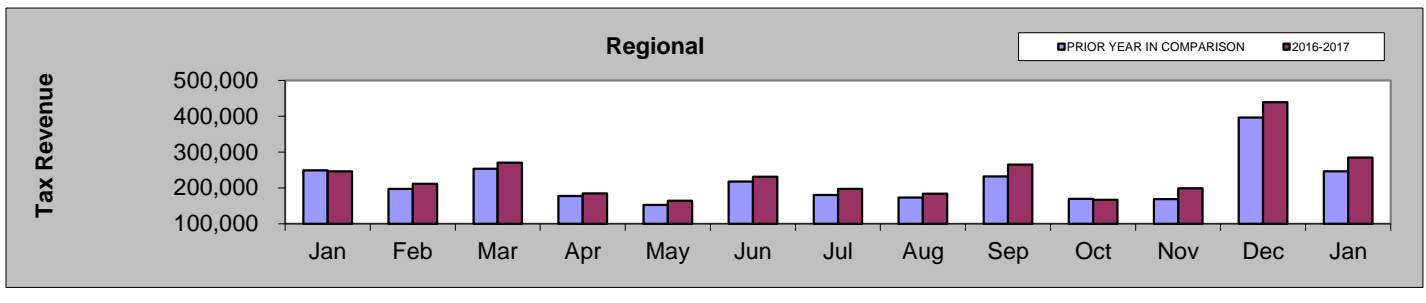
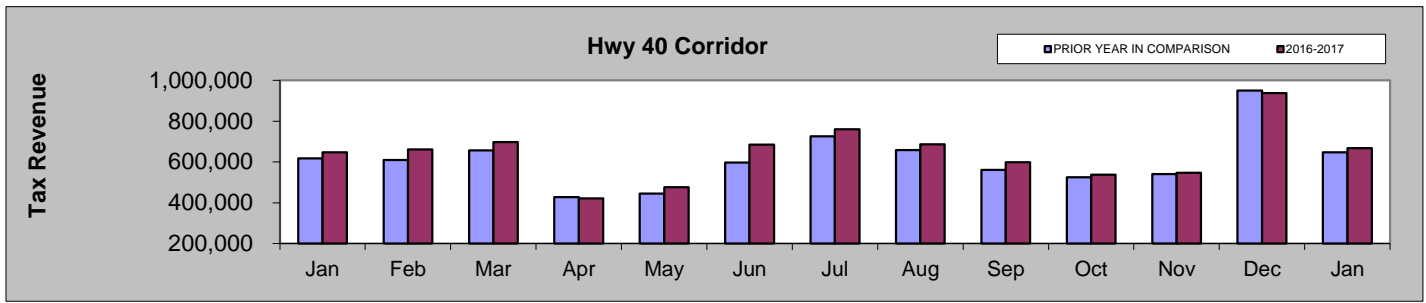
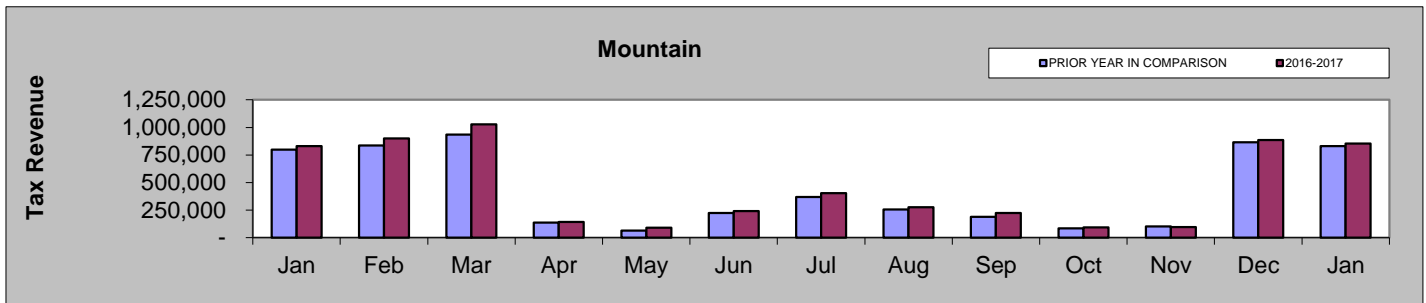
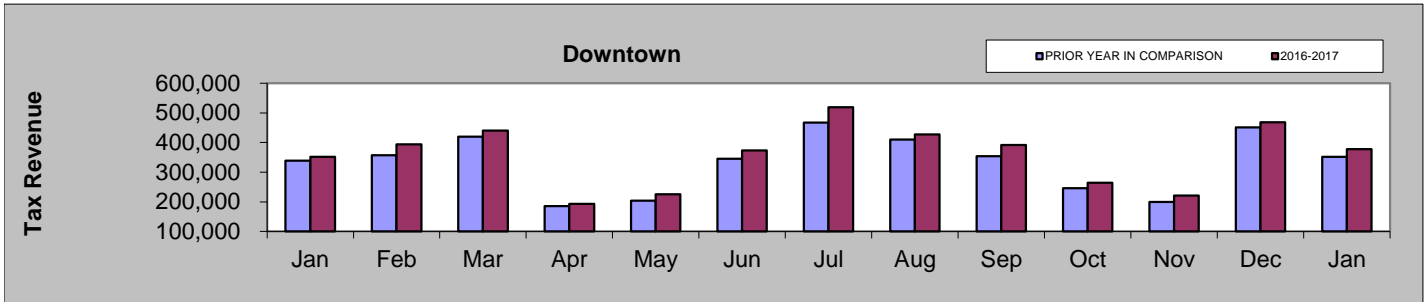


January 2016 - January 2017



JANUARY COMPARISON BY AREA

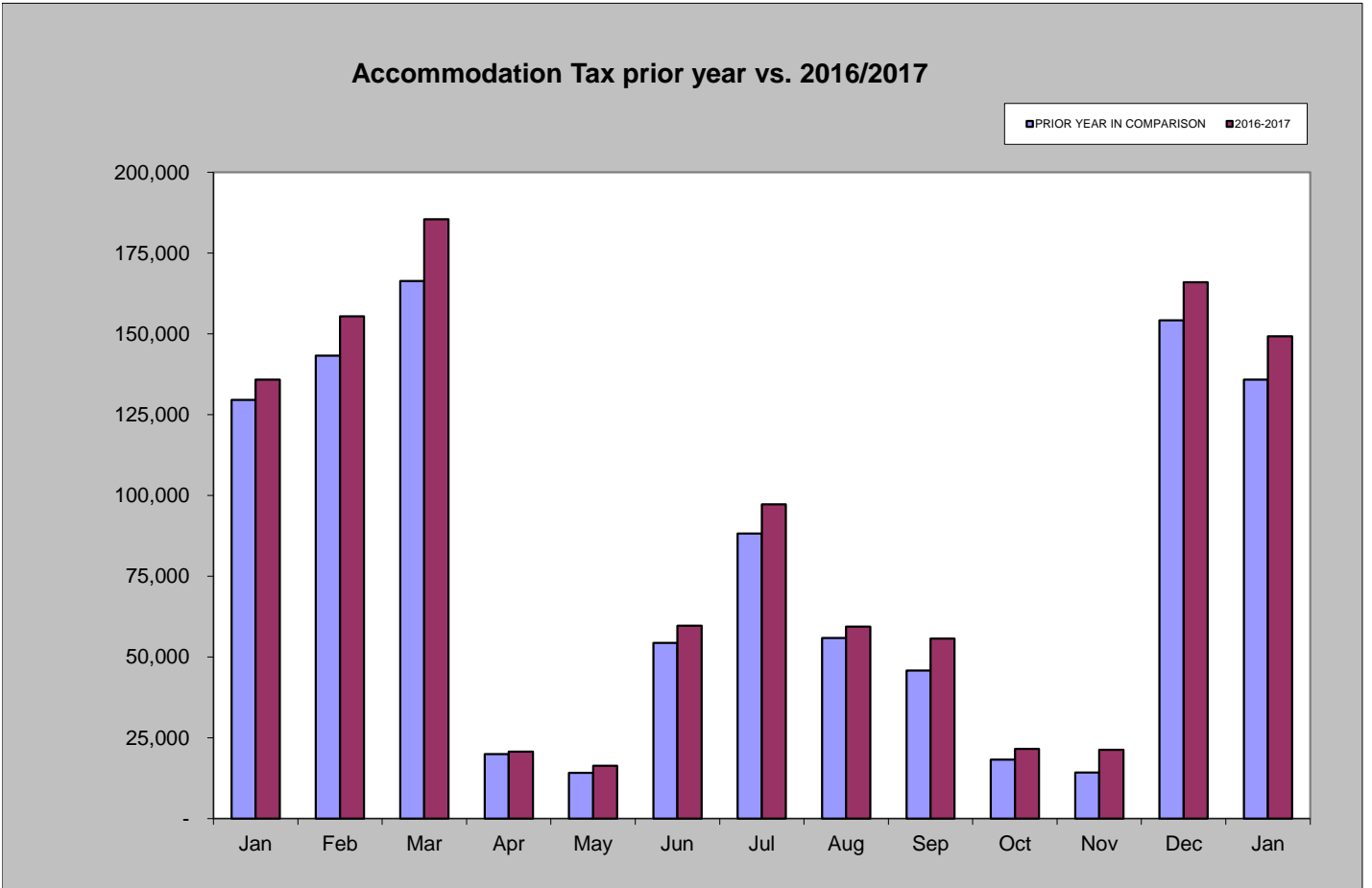
Area	2017	2016	% change
Downtown	\$378,097	\$351,773	7.48%
Mountain	\$852,221	\$830,885	2.57%
Hwy 40 Corridor	\$667,374	\$648,094	2.97%
Regional	\$284,340	\$245,969	15.60%
West Steamboat	\$242,159	\$228,804	5.84%



Accommodation Tax

January 2017 accommodation tax collections increased by 9.85% compared to January 2016.

Accommodation Tax January 2017	Accommodation Tax January 2016	% increase/decrease over last January
\$149,246	\$135,869	9.85%

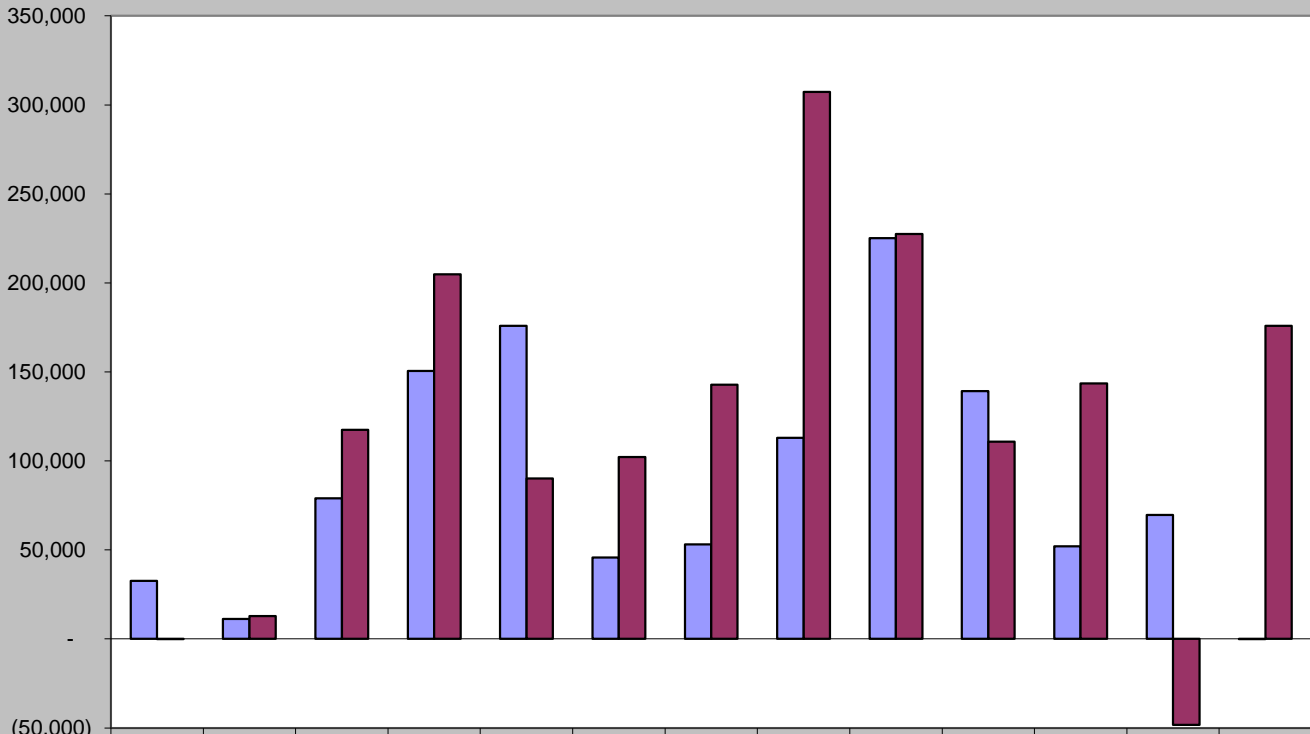


Building Use Tax

January 2017 building use tax collections are \$175,816

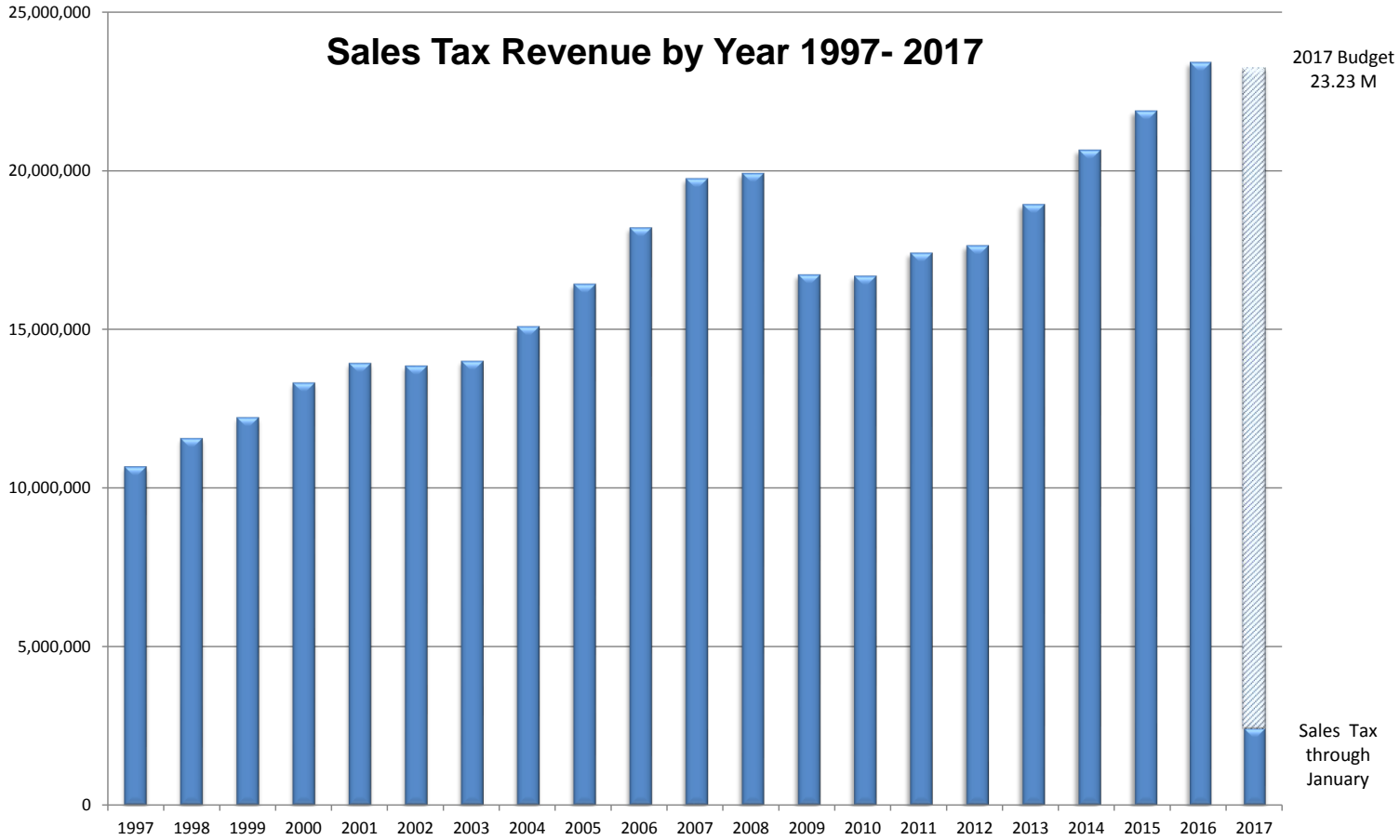
Building Use Tax January 2017	Building Use Tax January 2016
\$175,816	-\$31

Building Use Tax - prior year vs. 2016/2017



	Jan	Feb	Mar	Apr	May	Jun	Jul	Aug	Sep	Oct	Nov	Dec	Jan
■ PRIOR YEAR	32,553	11,247	78,961	150,491	175,885	45,725	53,106	112,920	225,157	139,199	51,966	69,642	(31)
■ 2016-2017	(31)	12,806	117,536	204,881	90,127	102,180	142,890	307,375	227,399	110,845	143,485	(48,275)	175,816

Sales Tax Revenue by Year 1997- 2017



Totals by Year	
1997	\$ 10,672,320
1998	\$ 11,559,068
1999	\$ 12,218,807
2000	\$ 13,304,983
2001	\$ 13,921,749
2002	\$ 13,841,283
2003	\$ 13,994,753
2004	\$ 15,079,016
2005	\$ 16,415,430
2006	\$ 18,192,298
2007	\$ 19,743,507
2008	\$ 19,904,293
2009	\$ 16,710,291
2010	\$ 16,669,735
2011	\$ 17,398,312
2012	\$ 17,632,019
2013	\$ 18,922,955
2014	\$ 20,635,678
2015	\$ 21,873,856
2016	\$ 23,399,079
* 2017	\$ 2,424,193

* 2017 total is year-to-date through January