



## December 2016 Taxes, Remitted in January 2017 Sales, Use, and Accommodation Tax Report

This City of Steamboat Springs Sales, Use, and Accommodation Tax Report examines tax collections for the month of December 2016, which were remitted to the City in January 2017.

---

### Sales Tax

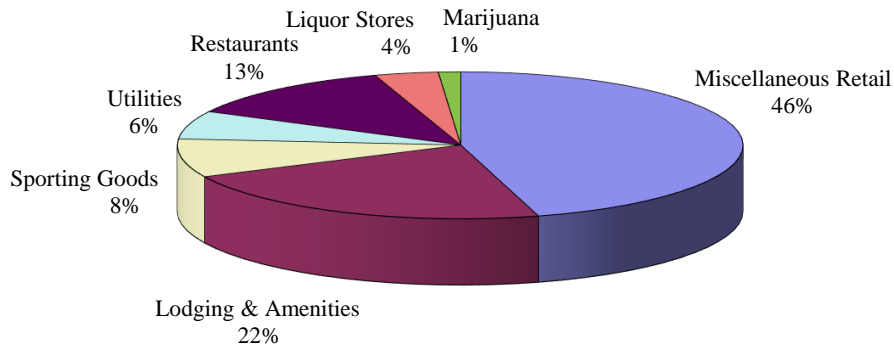
December 2016 sales tax collections increased by 2.21% compared to December 2015.  
Year-to-date total sales tax collections are 6.89% higher than those of 2015 year-to-date.

Sales Tax December 2016	Sales Tax December 2015	% increase/decrease over last December
\$3,058,065	\$2,991,811	2.21%

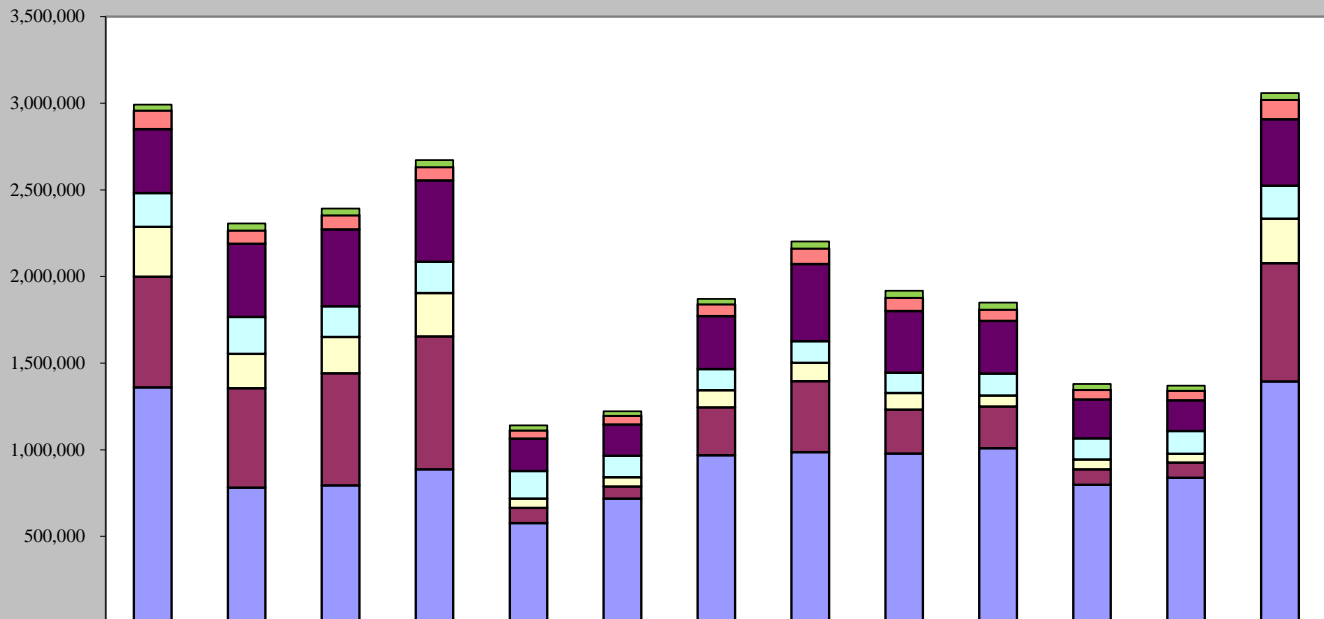
  

Sales Tax 2016 YTD	Sales Tax 2015 YTD	% increase/decrease over prior Year to Date
\$23,380,341	\$21,873,689	6.89%

### December 2016 Sales Categories



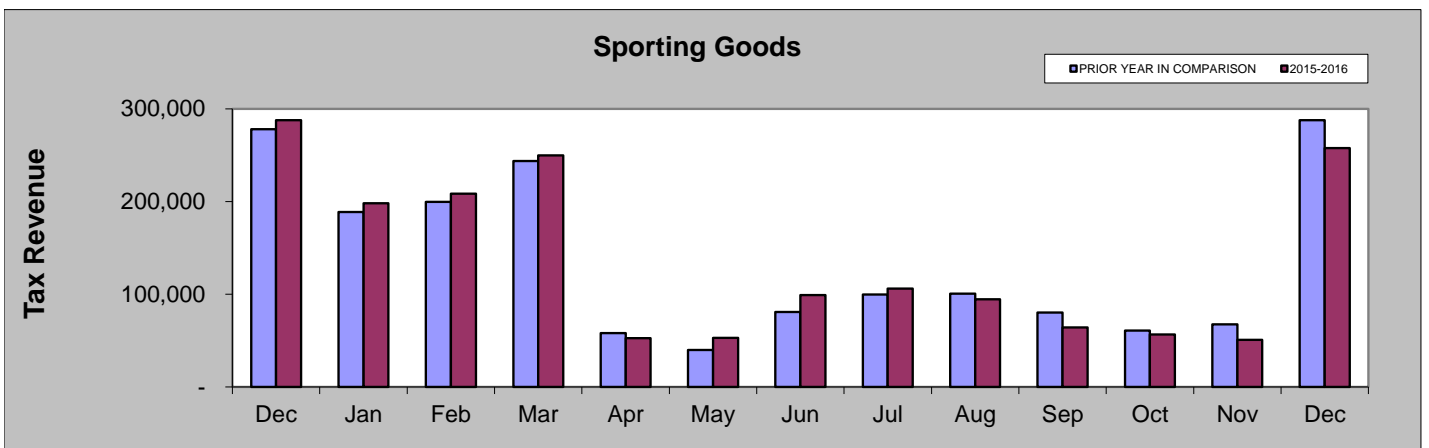
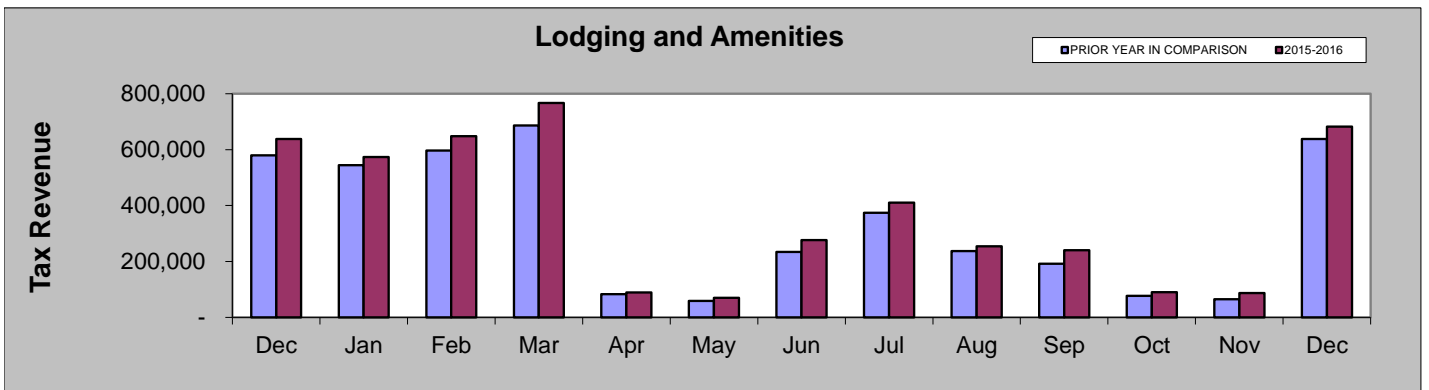
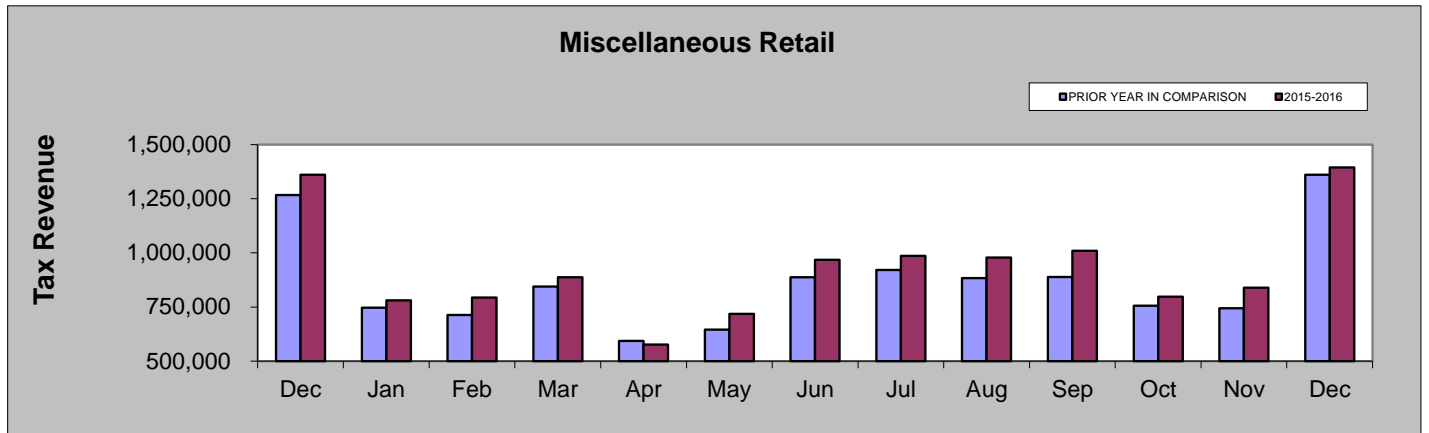
### December 2015 - December 2016

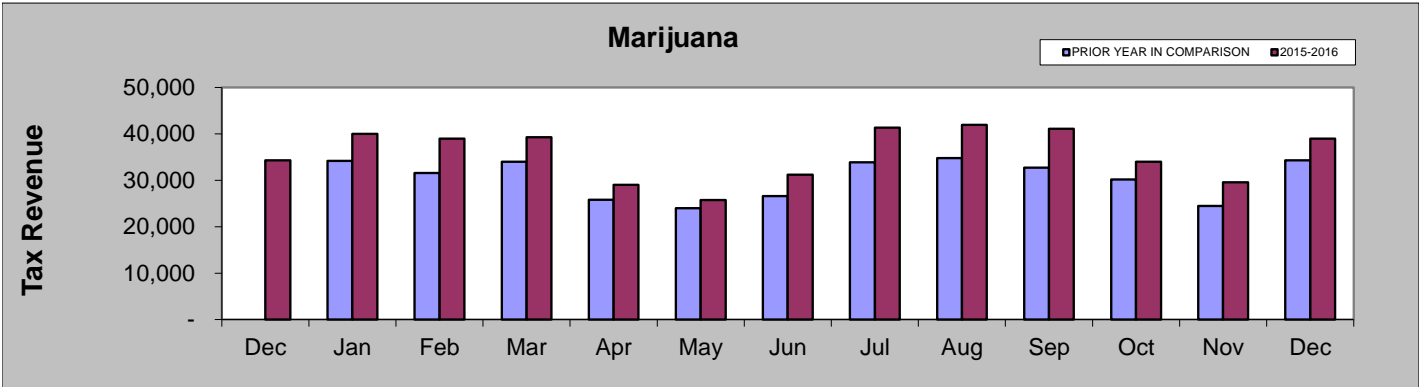
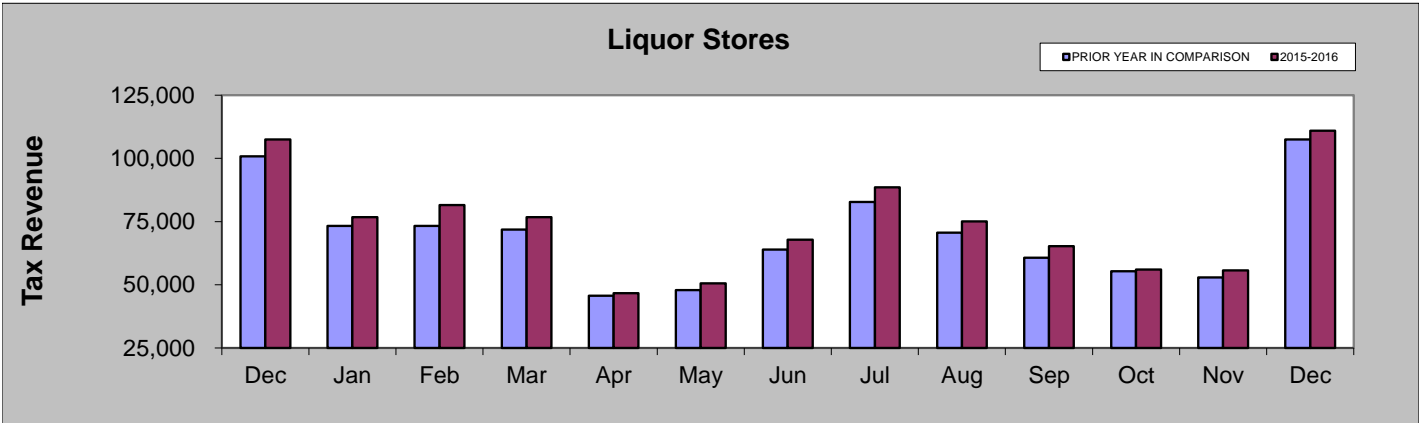
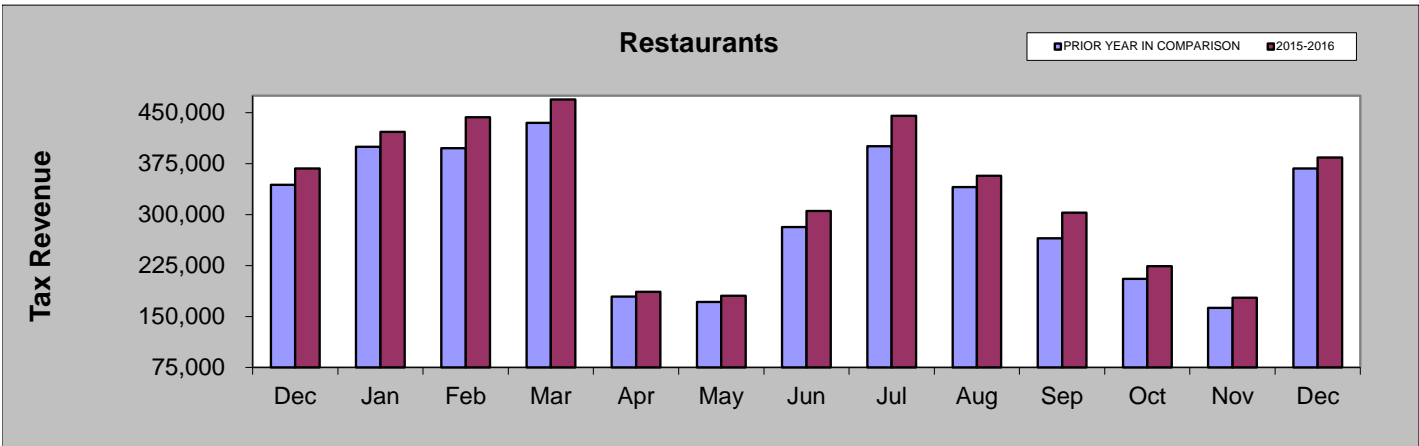
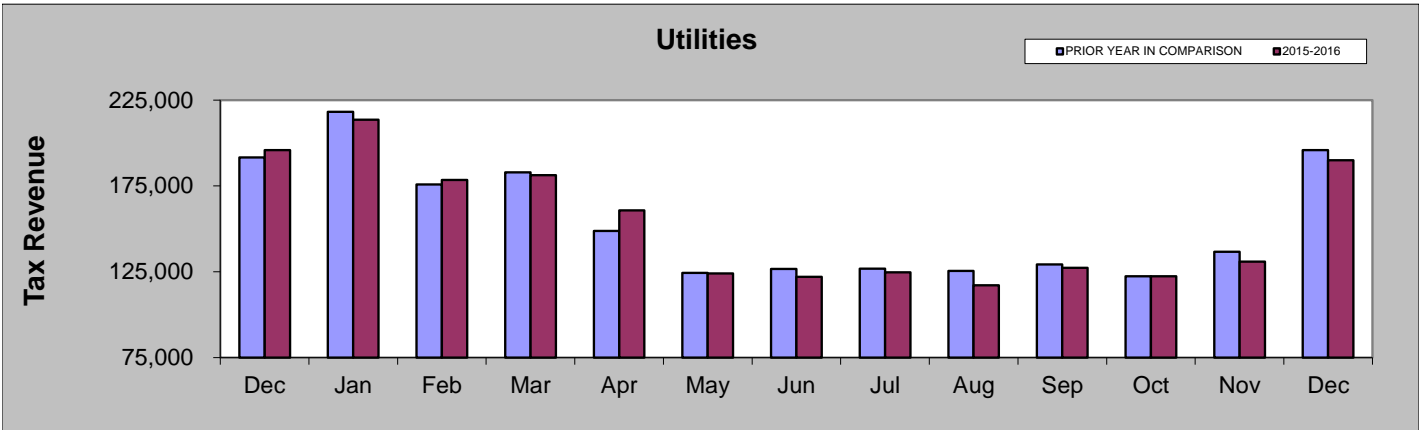


	Dec-15	Jan-16	Feb-16	Mar-16	Apr-16	May-16	Jun-16	Jul-16	Aug-16	Sep-16	Oct-16	Nov-16	Dec-16
Marijuana	34,312	39,977	38,947	39,286	28,993	25,725	31,236	41,330	41,945	41,094	34,015	29,593	38,972
Liquor Stores	107,454	76,759	81,515	76,793	46,722	50,518	67,857	88,604	75,025	65,278	56,043	55,694	110,973
Restaurants	367,830	421,901	443,206	469,299	186,378	180,452	305,262	445,188	357,135	302,724	223,958	177,501	383,947
Utilities	195,948	213,594	178,515	181,218	160,754	124,074	122,044	124,627	117,128	127,326	122,403	130,979	189,978
Sporting Goods	287,931	198,291	208,534	249,929	52,496	52,928	99,139	106,007	94,631	64,079	56,601	50,672	257,595
Lodging & Amenities	638,114	573,727	647,761	766,681	88,843	70,373	276,088	410,342	254,247	239,923	89,699	86,915	682,170
Miscellaneous Retail	1,360,224	781,276	794,286	887,964	576,063	718,143	968,500	985,935	978,216	1,009,105	797,141	839,129	1,394,431

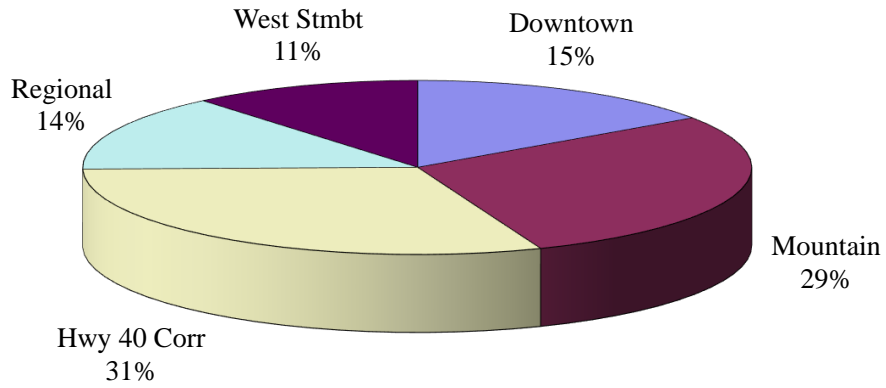
### DECEMBER COMPARISON BY CATEGORY

	2016	2015	% change
Miscellaneous Retail	\$1,394,431	\$1,360,224	2.51%
Lodging and Amenities	\$682,170	\$638,114	6.90%
Sporting Goods	\$257,595	\$287,931	-10.54%
Utilities	\$189,978	\$195,948	-3.05%
Restaurants	\$383,947	\$367,830	4.38%
Liquor Stores	\$110,973	\$107,454	3.27%
Marijuana	\$38,972	\$34,312	13.58%

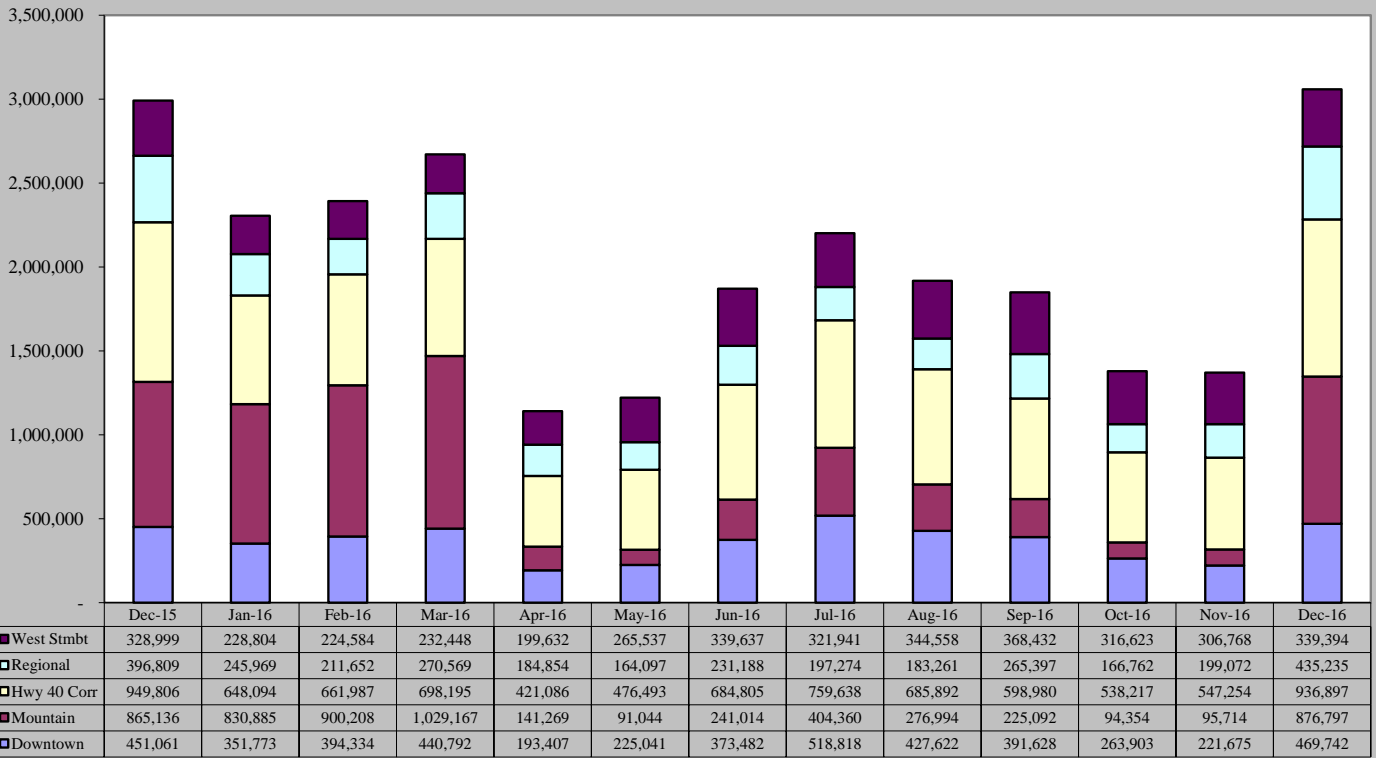




## December 2016 Sales Tax By Area

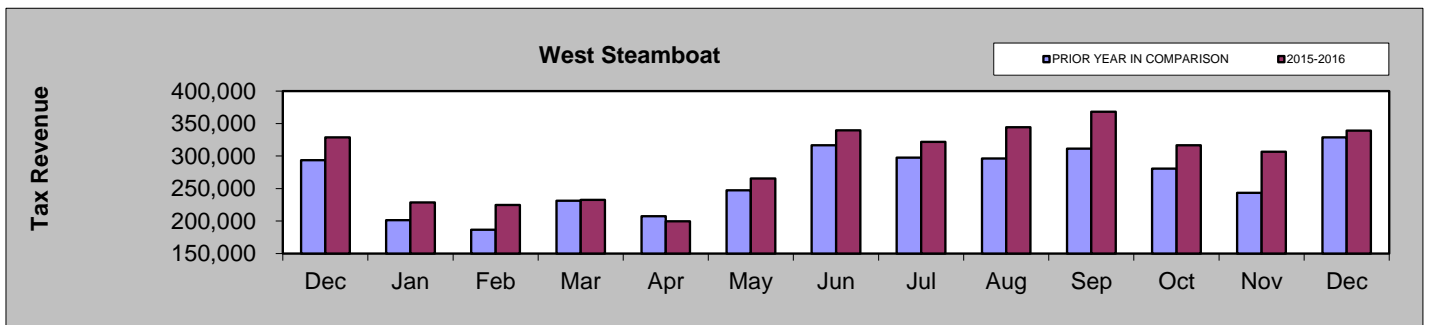
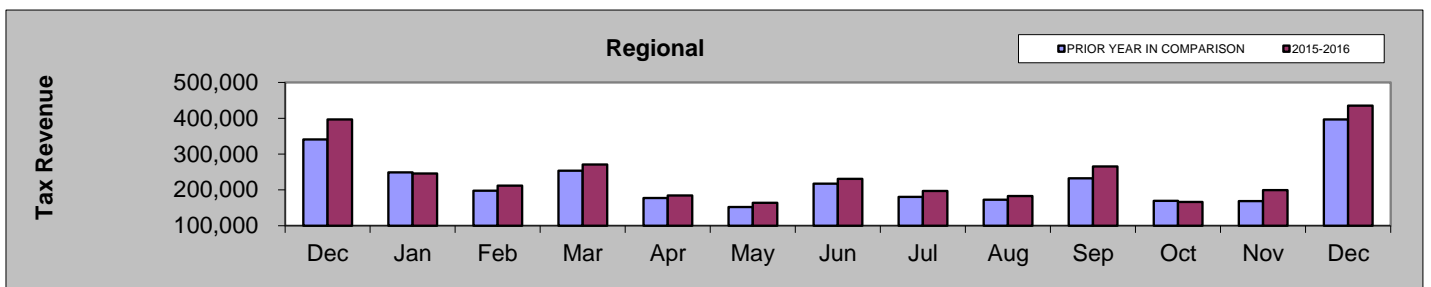
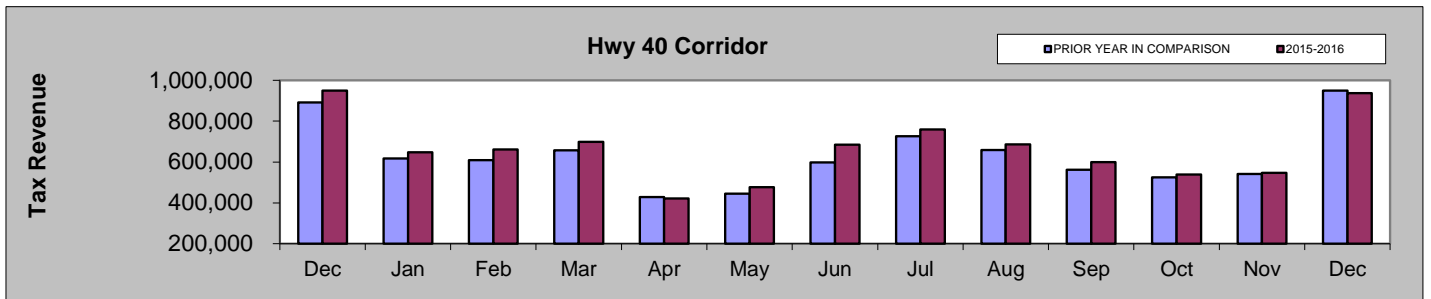
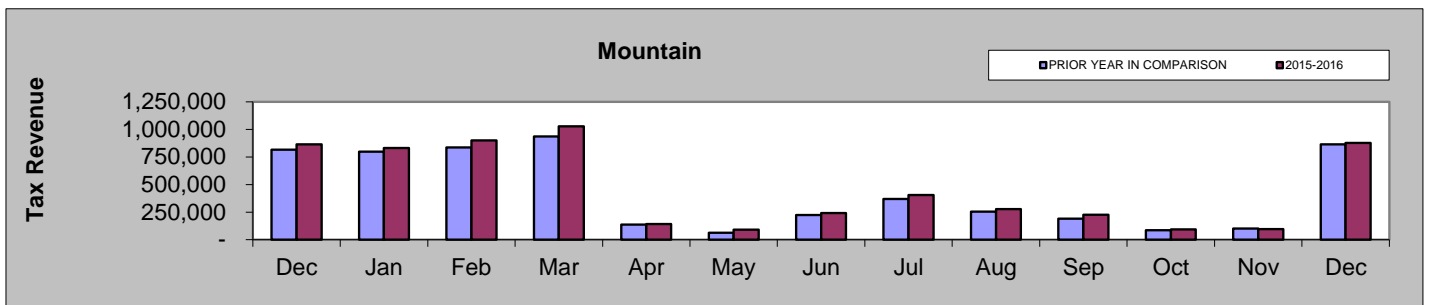
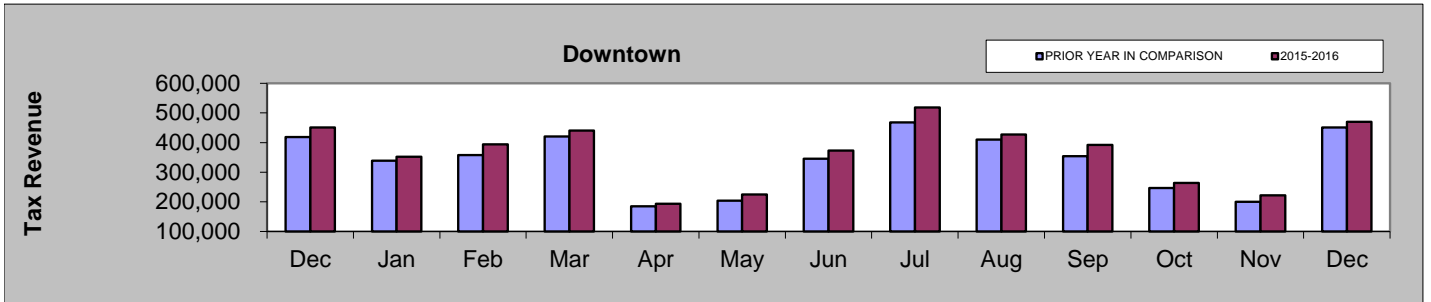


## December 2015 - December 2016



### DECEMBER COMPARISON BY AREA

Area	2016	2015	% change
<b>Downtown</b>	\$469,742	\$451,061	4.14%
<b>Mountain</b>	\$876,797	\$865,136	1.35%
<b>Hwy 40 Corridor</b>	\$936,897	\$949,806	-1.36%
<b>Regional</b>	\$435,235	\$396,809	9.68%
<b>West Steamboat</b>	\$339,394	\$328,999	3.16%

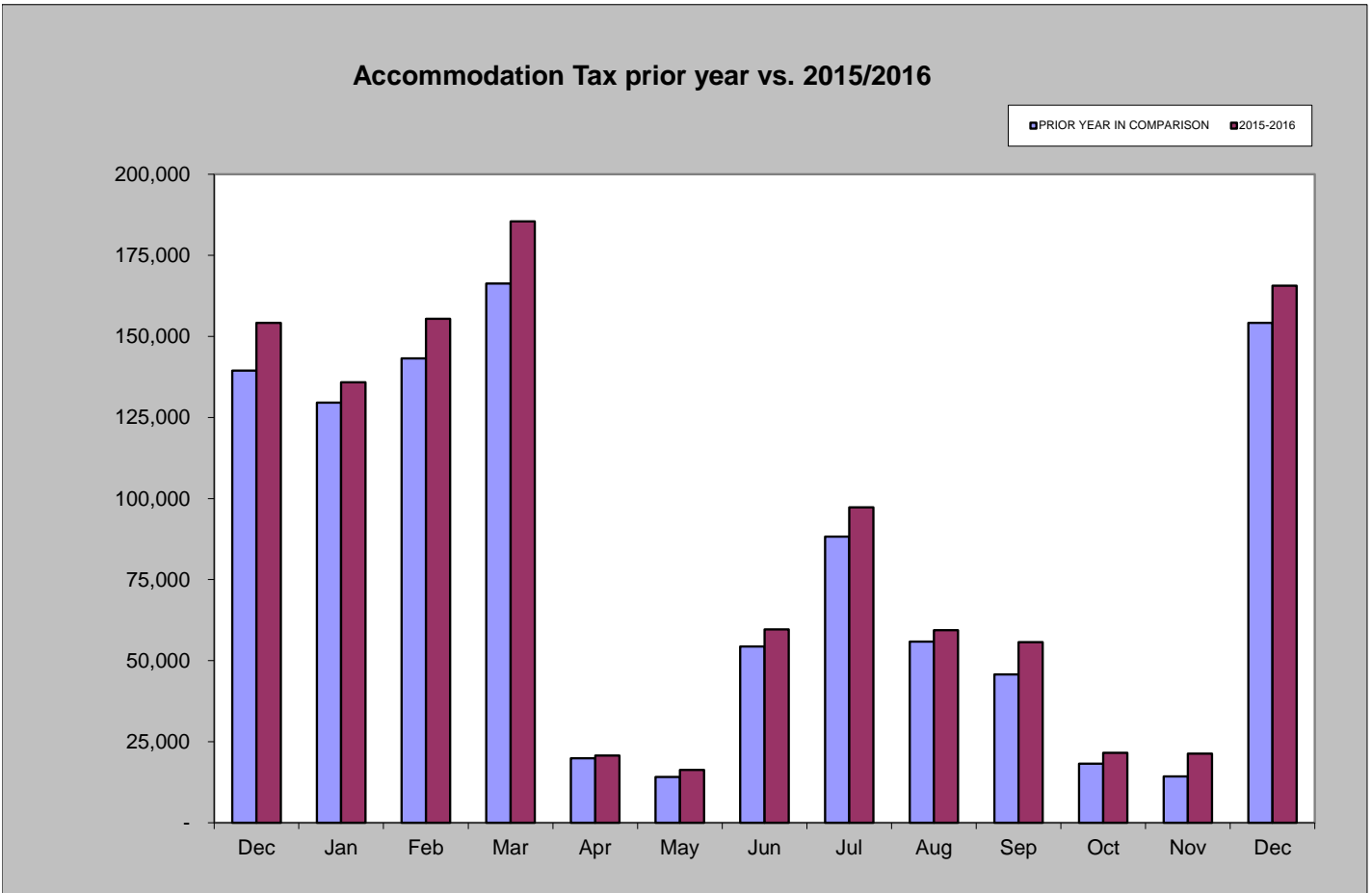


# Accommodation Tax

December 2016 accommodation tax collections increased by 7.45% compared to December 2015.  
 Year-to-date accommodation tax collections are 9.98% higher than those of 2015 year-to-date.

Accommodation Tax December 2016	Accommodation Tax December 2015	% increase/decrease over last December
\$165,629	\$154,148	7.45%

Accommodation Tax 2016 YTD	Accommodation Tax 2015 YTD	% increase/decrease over prior Year to Date
\$994,224	\$904,037	9.98%

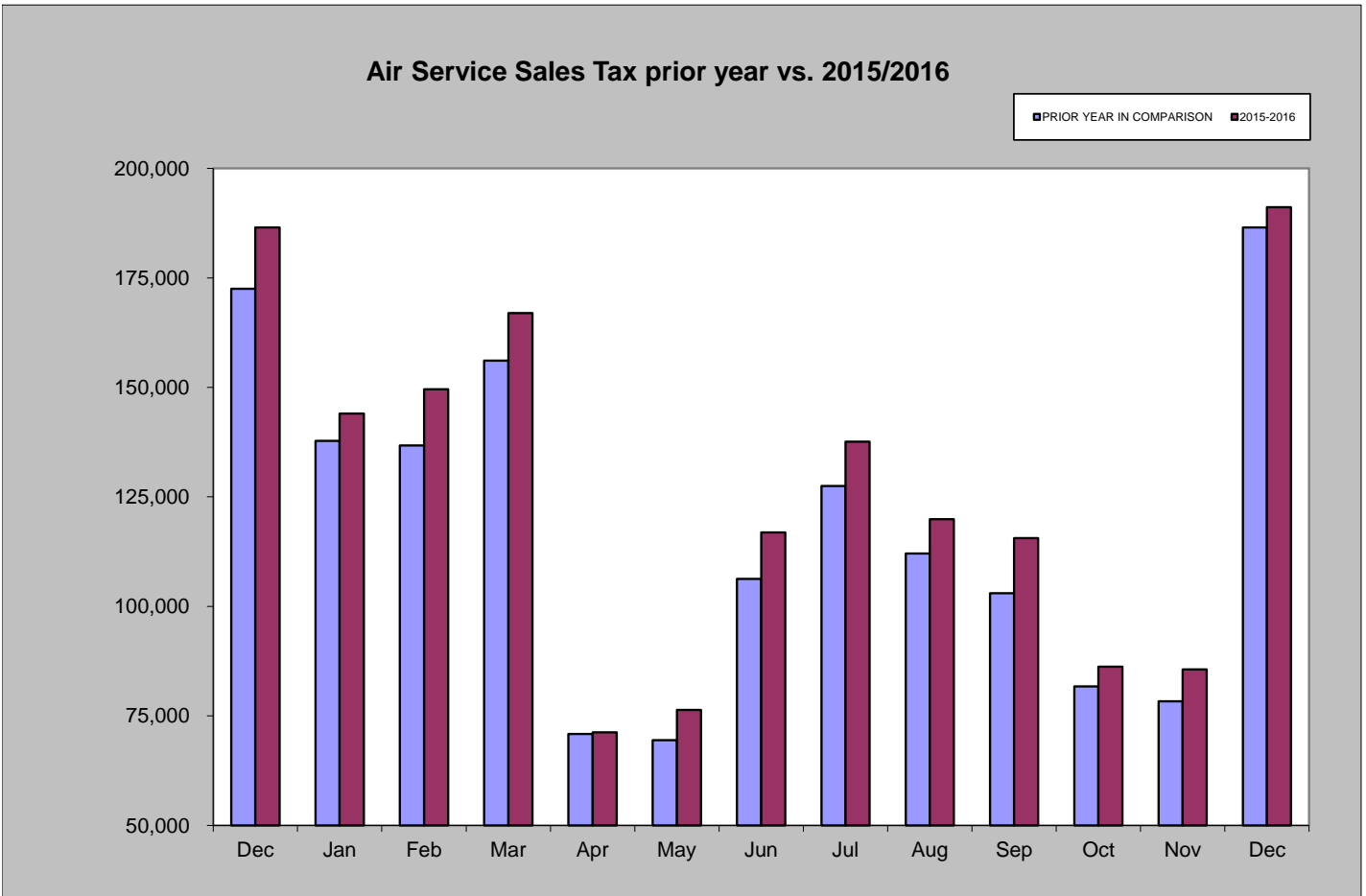


# Local Marketing District - Air Service Sales Tax

December 2016 air service sales tax collections increased by 2.48% compared to December 2015.  
 Year-to-date air service sales tax collections are 6.93% higher than those of 2015 year-to-date.

Air Service Sales Tax December 2016	Air Service Sales Tax December 2015	% increase/decrease over last December
\$191,128	\$186,497	2.48%

Air Service Sales Tax 2016 YTD	Air Service Sales Tax 2015 YTD	% increase/decrease over prior Year to Date
\$1,461,208	\$1,366,547	6.93%





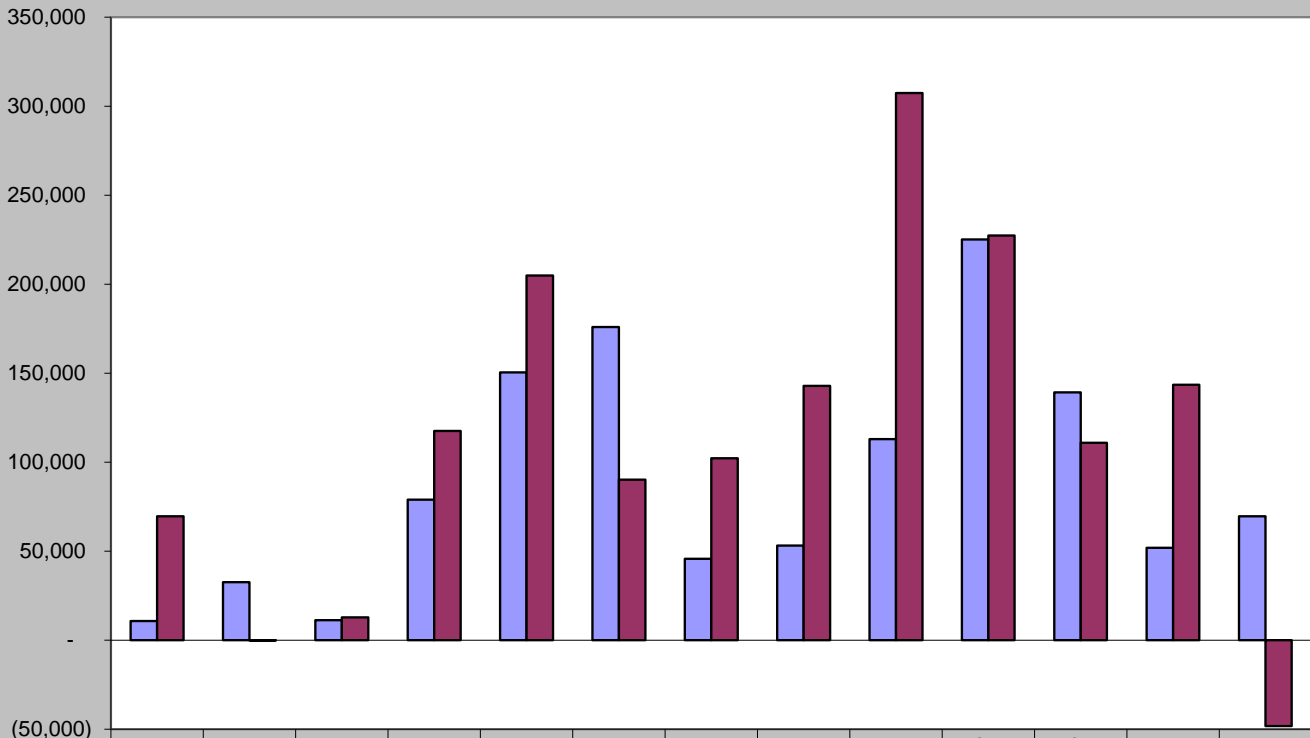
# Building Use Tax

December 2016 building use tax collections are 169% less than those of December 2015.  
 Year-to-date building use tax collections are 23% higher than those of 2015 year-to-date.

Building Use Tax December 2016	Building Use Tax December 2015	% increase/decrease over last December
-\$48,275	\$69,642	-169%

Building Use Tax 2016 YTD	Building Use Tax 2015 YTD	% increase/decrease over prior Year to Date
\$1,411,218	\$1,146,851	23%

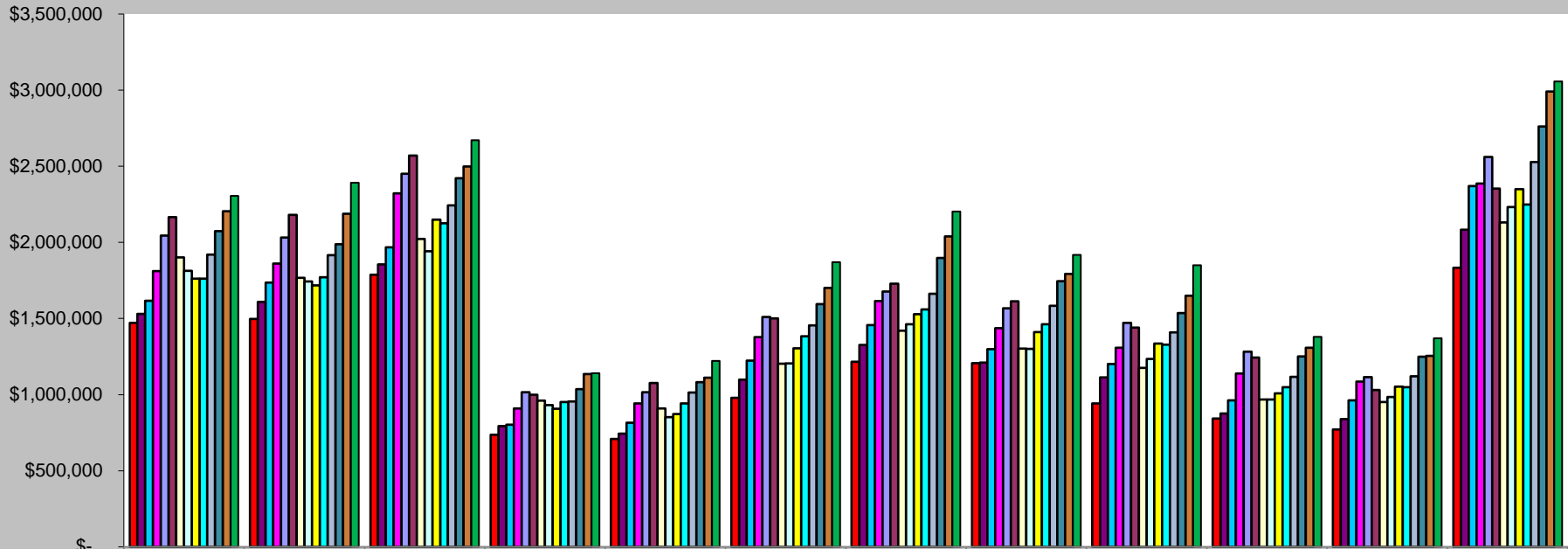
## Building Use Tax - prior year vs. 2015/2016



	Dec	Jan	Feb	Mar	Apr	May	Jun	Jul	Aug	Sep	Oct	Nov	Dec
■ PRIOR YEAR	10,748	32,553	11,247	78,961	150,491	175,885	45,725	53,106	112,920	225,157	139,199	51,966	69,642
■ 2015-2016	69,642	(31)	12,806	117,536	204,881	90,127	102,180	142,890	307,375	227,399	110,845	143,485	(48,275)

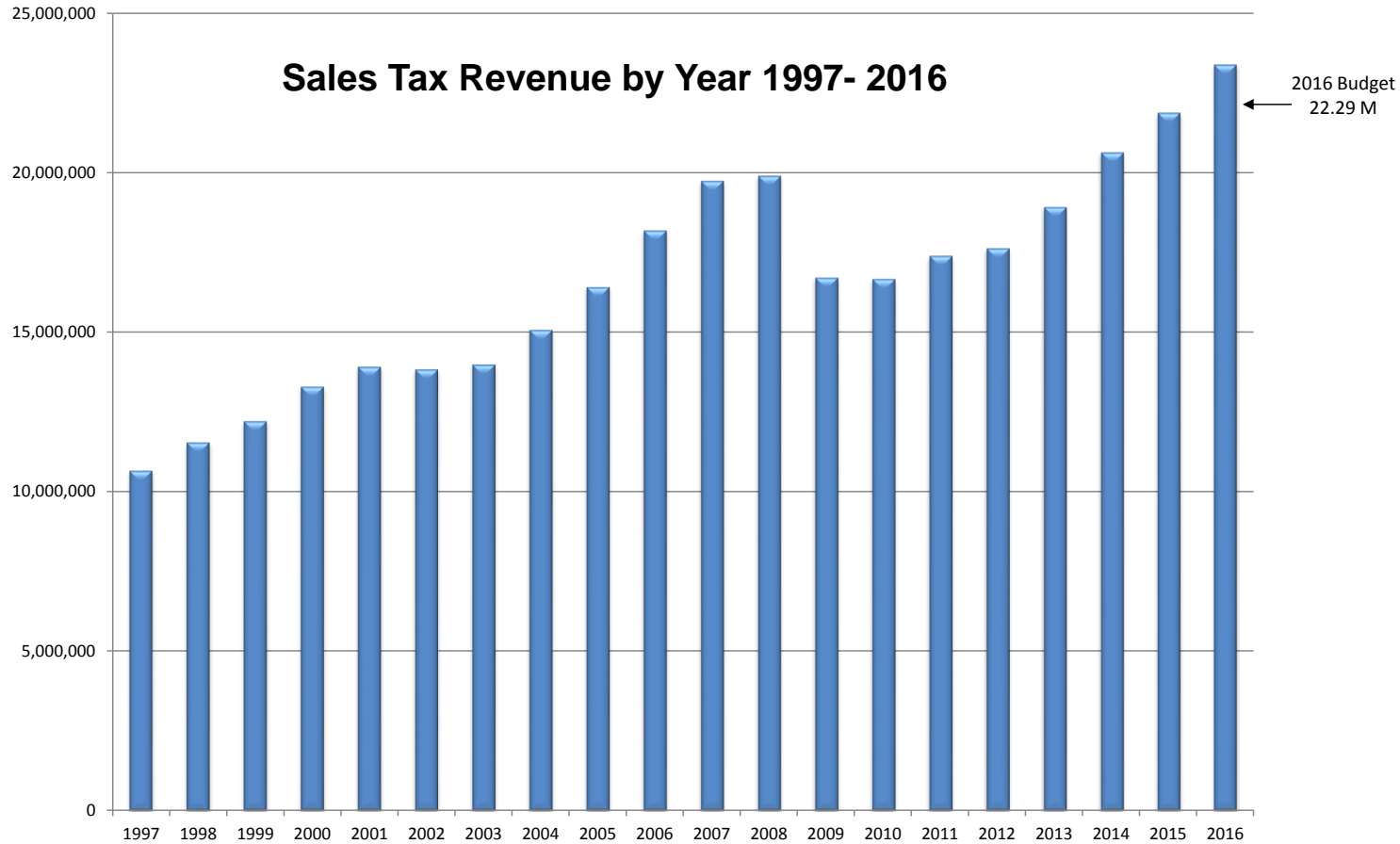
# Historical Sales Tax Data

## Sales Tax Totals - 2003 to 2016



	January	February	March	April	May	June	July	August	September	October	November	December
■ 2003	\$1,471,061	1,497,398	1,787,877	737,255	708,947	979,861	1,215,159	1,207,373	942,596	842,980	770,632	1,833,614
■ 2004	\$1,530,388	1,609,507	1,855,895	793,619	744,456	1,097,619	1,325,813	1,209,657	1,112,747	875,854	839,590	2,083,871
■ 2005	\$1,617,152	1,735,422	1,968,239	803,359	815,925	1,223,263	1,457,514	1,299,302	1,201,406	962,731	961,551	2,369,566
■ 2006	\$1,811,413	1,861,558	2,322,443	908,584	941,595	1,377,269	1,614,695	1,436,115	1,307,845	1,139,648	1,084,858	2,386,275
■ 2007	\$2,044,667	2,032,045	2,450,620	1,016,601	1,015,101	1,510,706	1,676,821	1,567,534	1,470,714	1,281,546	1,115,446	2,561,705
■ 2008	\$2,166,093	2,180,532	2,570,347	999,144	1,077,244	1,500,946	1,728,329	1,612,531	1,440,373	1,244,023	1,030,654	2,354,077
■ 2009	\$1,900,660	1,767,622	2,022,205	960,333	908,729	1,203,304	1,419,472	1,301,838	1,176,374	967,698	951,706	2,130,350
■ 2010	\$1,813,155	1,743,152	1,942,237	931,573	853,085	1,204,077	1,462,648	1,300,401	1,235,126	967,688	984,189	2,232,403
■ 2011	\$1,761,158	1,716,963	2,150,278	907,893	872,240	1,304,067	1,528,476	1,411,387	1,335,629	1,008,207	1,052,340	2,349,674
■ 2012	\$1,761,959	1,770,126	2,125,388	951,540	941,877	1,383,426	1,559,801	1,461,392	1,328,744	1,048,827	1,049,425	2,249,514
■ 2013	\$1,919,887	1,916,581	2,242,412	955,334	1,013,860	1,454,259	1,662,137	1,584,036	1,408,659	1,117,302	1,120,256	2,528,232
■ 2014	\$2,073,559	1,988,146	2,421,883	1,035,139	1,082,596	1,595,084	1,896,956	1,745,617	1,535,341	1,250,229	1,249,980	2,761,147
■ 2015	\$2,204,914	2,188,460	2,498,079	1,134,521	1,111,391	1,700,528	2,040,035	1,793,173	1,649,101	1,307,853	1,253,821	2,991,811
■ 2016	\$2,305,525	2,392,764	2,671,170	1,140,249	1,222,212	1,870,125	2,202,031	1,918,327	1,849,529	1,379,860	1,370,483	3,058,065

## Sales Tax Revenue by Year 1997- 2016



Totals by Year	
<b>1997</b>	\$ 10,672,320
<b>1998</b>	\$ 11,559,068
<b>1999</b>	\$ 12,218,807
<b>2000</b>	\$ 13,304,983
<b>2001</b>	\$ 13,921,749
<b>2002</b>	\$ 13,841,283
<b>2003</b>	\$ 13,994,753
<b>2004</b>	\$ 15,079,016
<b>2005</b>	\$ 16,415,430
<b>2006</b>	\$ 18,192,298
<b>2007</b>	\$ 19,743,507
<b>2008</b>	\$ 19,904,293
<b>2009</b>	\$ 16,710,291
<b>2010</b>	\$ 16,669,735
<b>2011</b>	\$ 17,398,312
<b>2012</b>	\$ 17,632,019
<b>2013</b>	\$ 18,922,955
<b>2014</b>	\$ 20,635,678
<b>2015</b>	\$ 21,873,689
<b>* 2016</b>	\$ 23,380,341

\* 2016 total is year-to-date through December