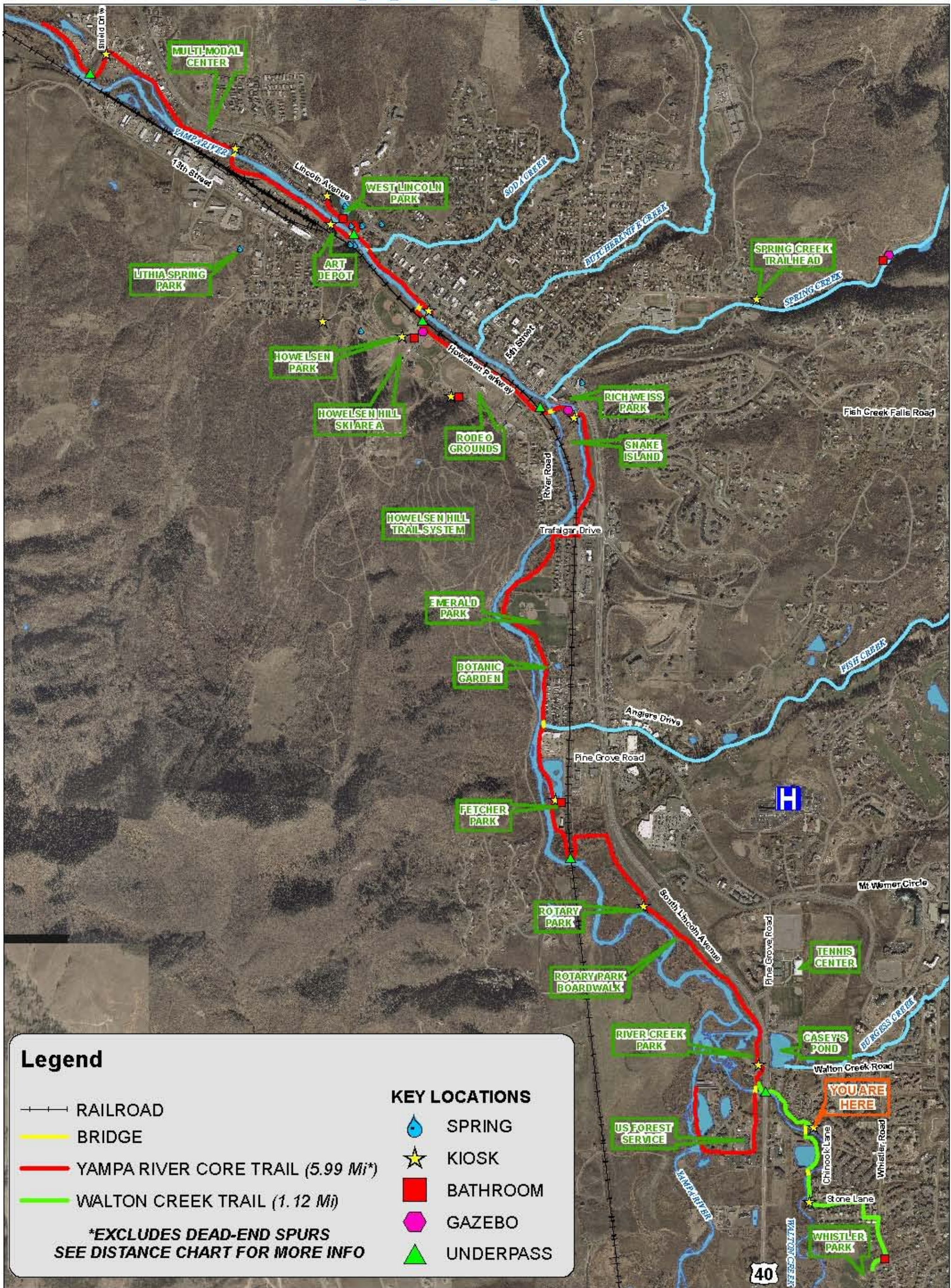




YAMPA RIVER CORE TRAIL SYSTEM LOCATION MAP



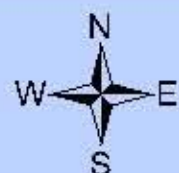
Legend

- +—+— RAILROAD
- BRIDGE
- YAMPA RIVER CORE TRAIL (5.99 Mi*)
- WALTON CREEK TRAIL (1.12 Mi)

*EXCLUDES DEAD-END SPURS
SEE DISTANCE CHART FOR MORE INFO

KEY LOCATIONS

- SPRING
- KIOSK
- BATHROOM
- GAZEBO
- UNDERPASS



1 inch equals 1,500 feet
1 inch equals 0.28 miles
PRINT DATE: MAY 2ND, 2006
AERIAL PHOTOS TAKEN OCTOBER, 17, 2003

This data was prepared from publicly available information and should be used for reference purposes only. Any other use or compilation of this information is the sole responsibility of the user. This data cannot be used to establish legal title boundary lines, setback compliance, easements of structures, improvements or rights, or relied upon in any legal activity. It will not be accepted as a substitute for ground truth survey information during the planning/engineering process of project development. The City of Steamboat Springs expressly disclaims all liability regarding accuracy or completeness of this data.