



March 2018 Taxes, Remitted in April 2018 Sales, Use, and Accommodation Tax Report

This City of Steamboat Springs Sales, Use, and Accommodation Tax Report examines tax collections for the month of March 2018, which were remitted to the City in April 2018.

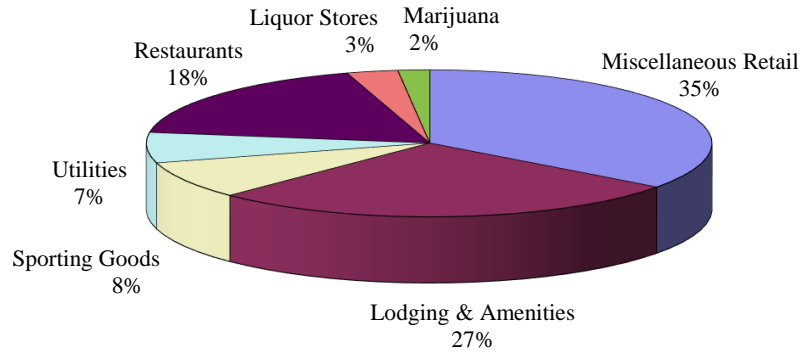
Sales Tax

March 2018 sales tax collections increased by 3.73% compared to March 2017.
Year-to-date total sales tax collections are 6.37% higher than those of 2017 year-to-date.

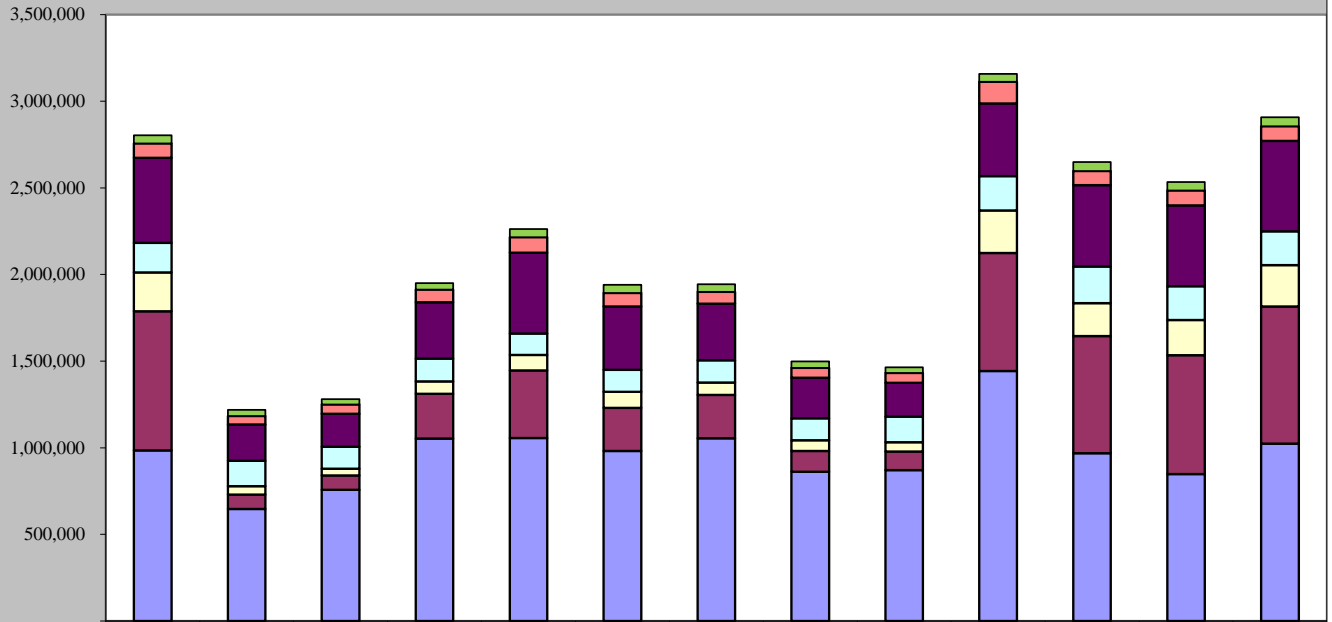
Sales Tax March 2018	Sales Tax March 2017	% increase/decrease over last March
\$2,907,966	\$2,803,369	3.73%

Sales Tax 2018 YTD	Sales Tax 2017 YTD	% increase/decrease over prior Year to Date
\$8,091,725	\$7,607,506	6.37%

March 2018 Sales Categories



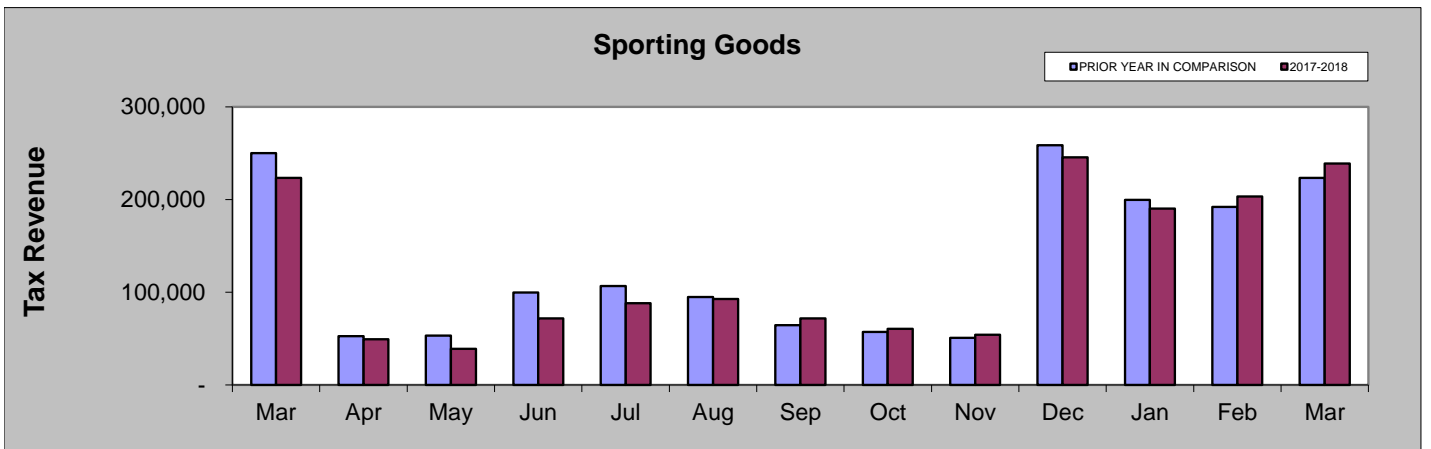
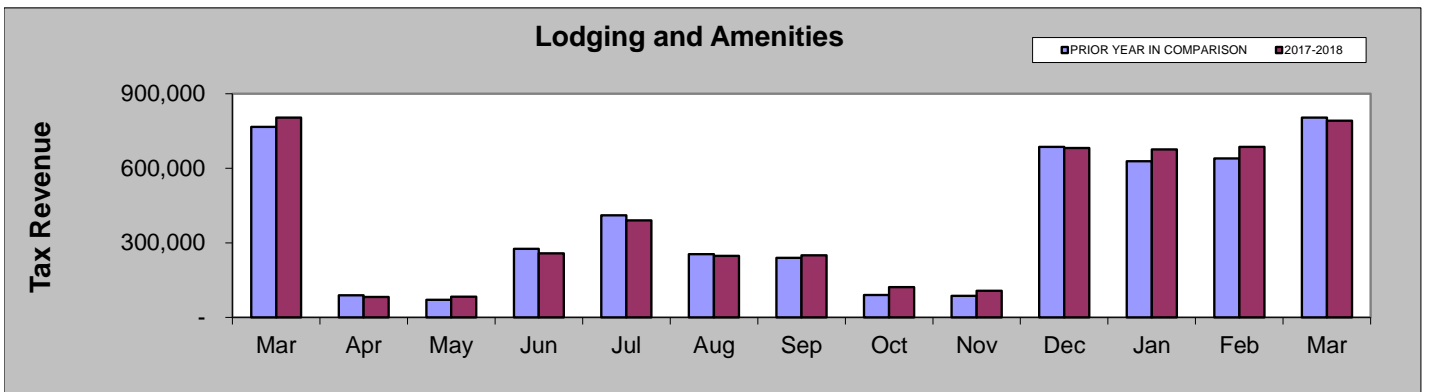
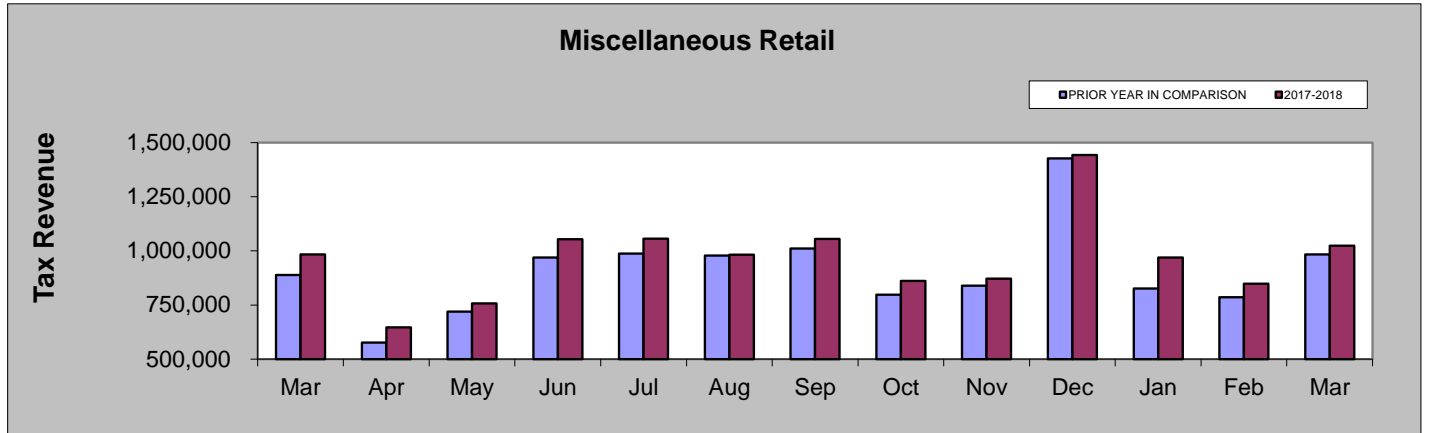
March 2017 - March 2018

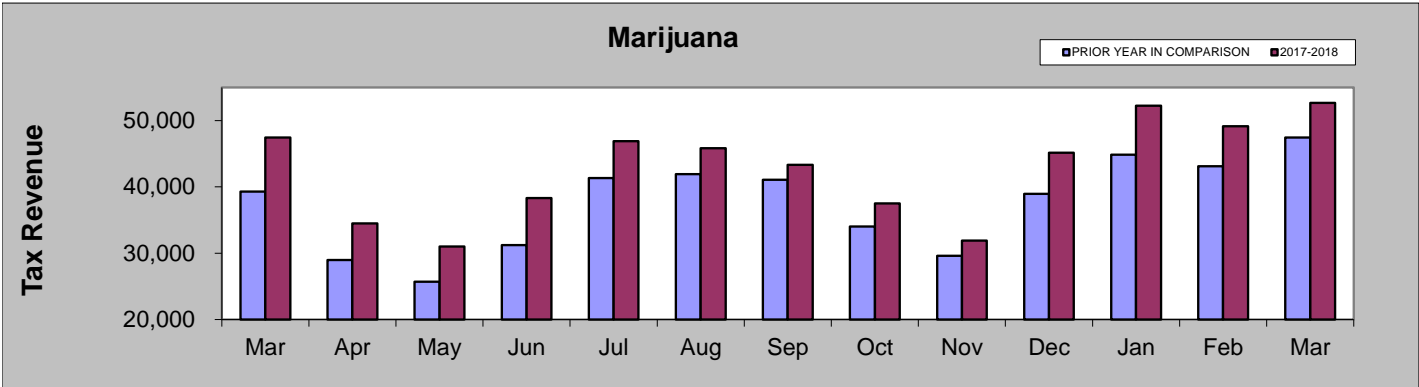
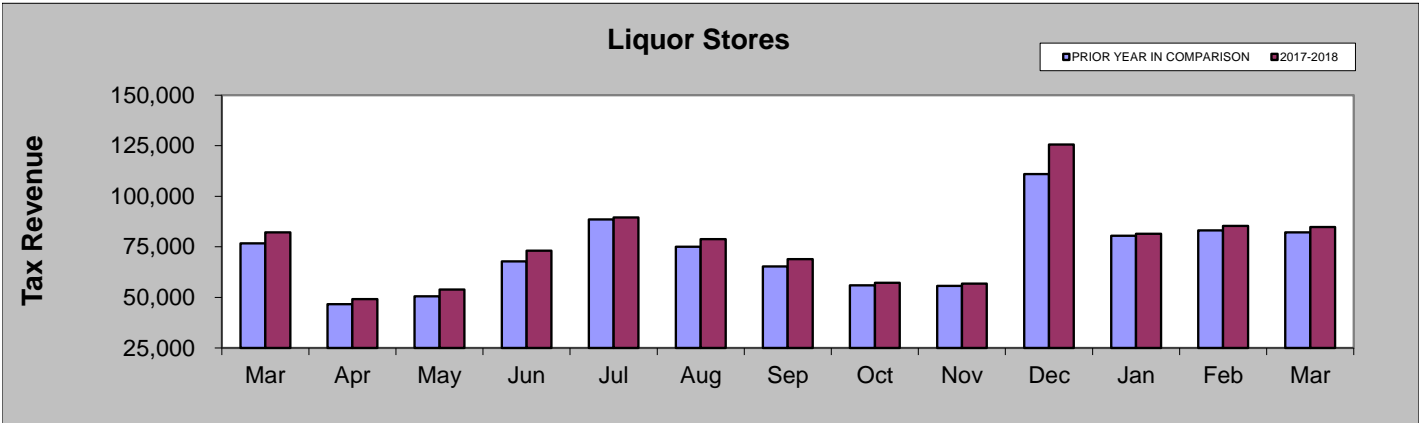
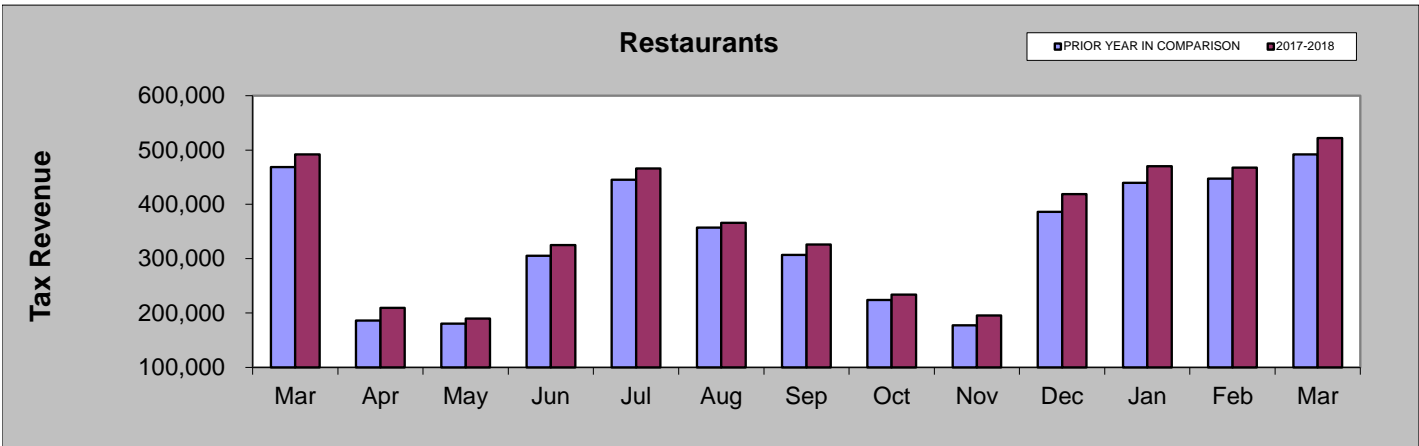
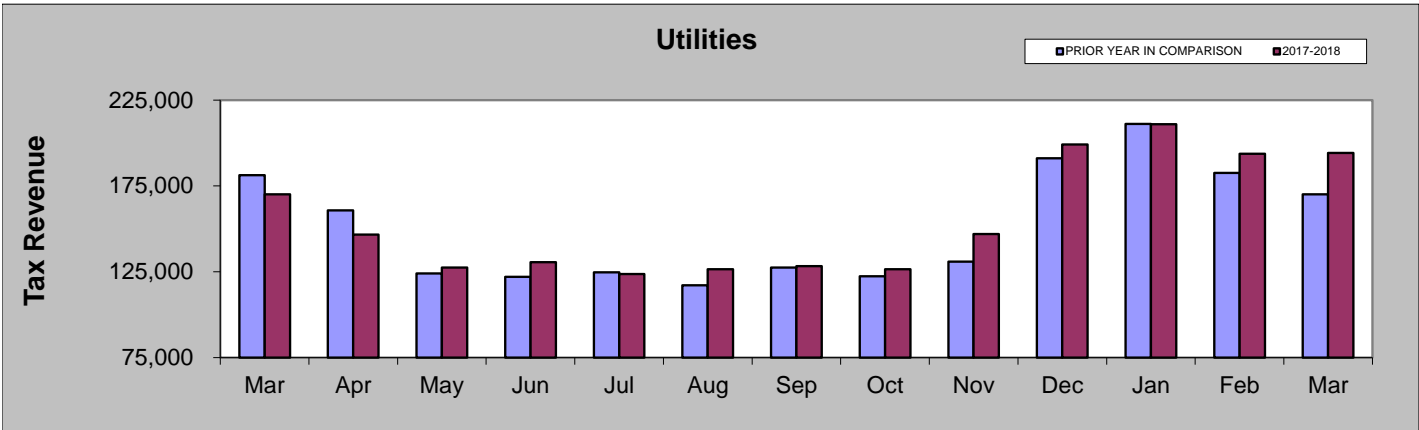


	Mar-17	Apr-17	May-17	Jun-17	Jul-17	Aug-17	Sep-17	Oct-17	Nov-17	Dec-17	Jan-18	Feb-18	Mar-18
Marijuana	47,454	34,510	31,021	38,304	46,910	45,817	43,327	37,495	31,913	45,146	52,255	49,156	52,692
Liquor Stores	82,179	49,185	53,847	73,163	89,541	78,774	68,892	57,191	56,771	125,660	81,482	85,379	84,750
Restaurants	491,868	209,780	189,651	325,368	466,212	365,998	326,063	234,045	195,335	418,664	470,029	467,754	521,854
Utilities	170,159	146,582	127,395	130,637	123,752	126,523	128,255	126,553	146,984	199,225	211,049	193,675	194,316
Sporting Goods	223,451	49,228	38,810	71,810	88,270	92,697	71,883	60,651	54,083	245,694	190,312	203,449	238,925
Lodging & Amenities	804,204	81,696	83,054	258,158	389,856	247,759	250,229	121,391	107,146	681,197	675,506	686,431	791,846
Miscellaneous Retail	984,055	647,137	756,736	1,053,397	1,056,922	982,089	1,055,072	860,794	871,321	1,442,484	969,108	848,174	1,023,583

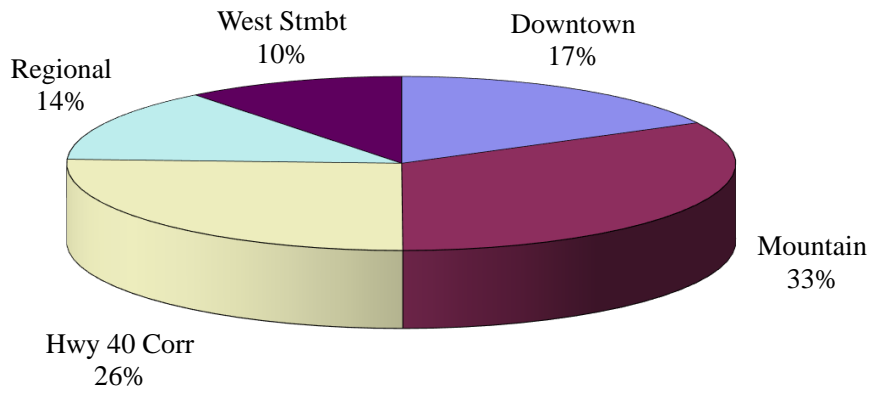
MARCH COMPARISON BY CATEGORY

	2018	2017	% change
Miscellaneous Retail	\$1,023,583	\$984,055	4.02%
Lodging and Amenities	\$791,846	\$804,204	-1.54%
Sporting Goods	\$238,925	\$223,451	6.93%
Utilities	\$194,316	\$170,159	14.20%
Restaurants	\$521,854	\$491,868	6.10%
Liquor Stores	\$84,750	\$82,179	3.13%
Marijuana	\$52,692	\$47,454	11.04%

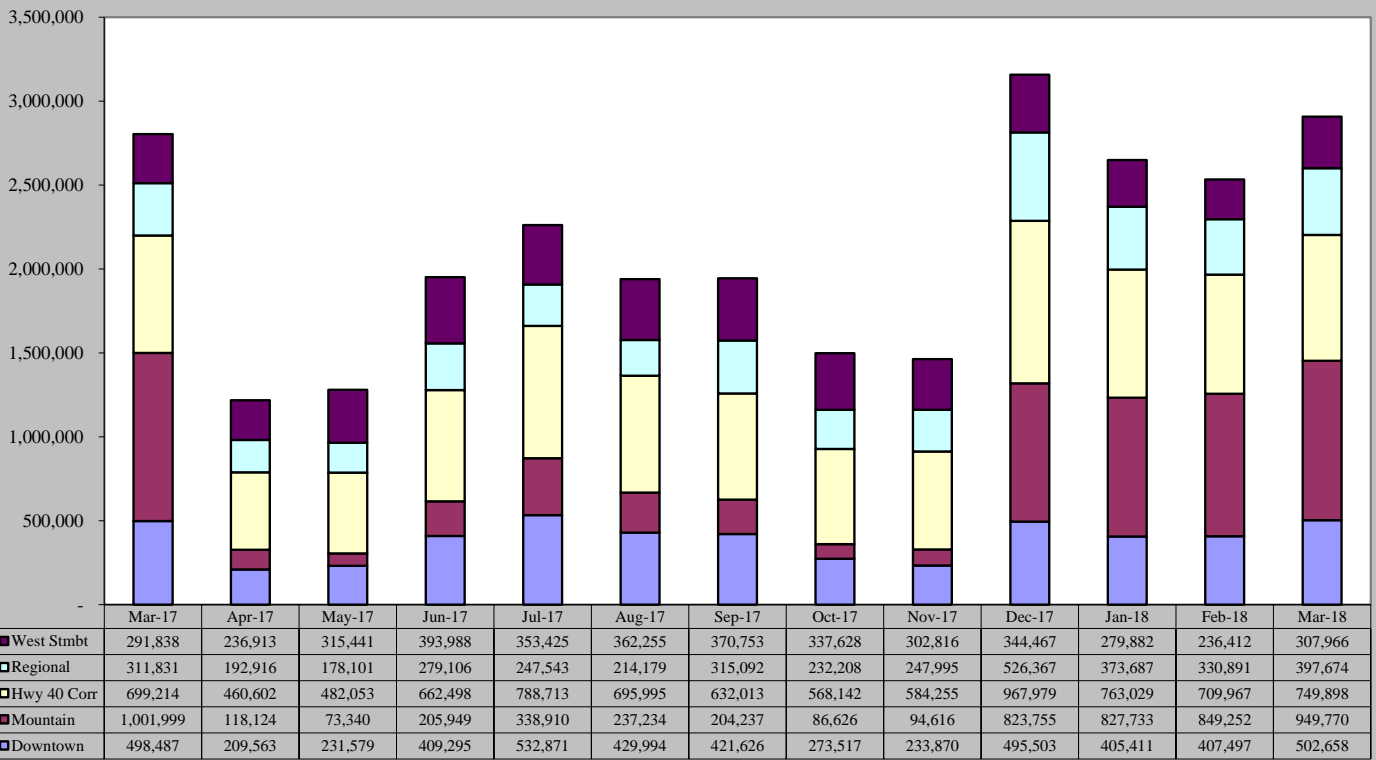




March 2018 Sales Tax By Area

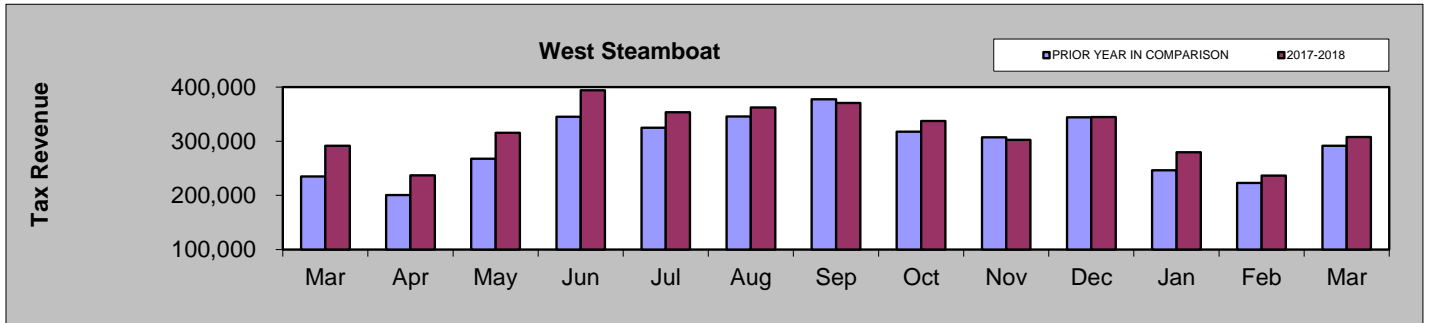
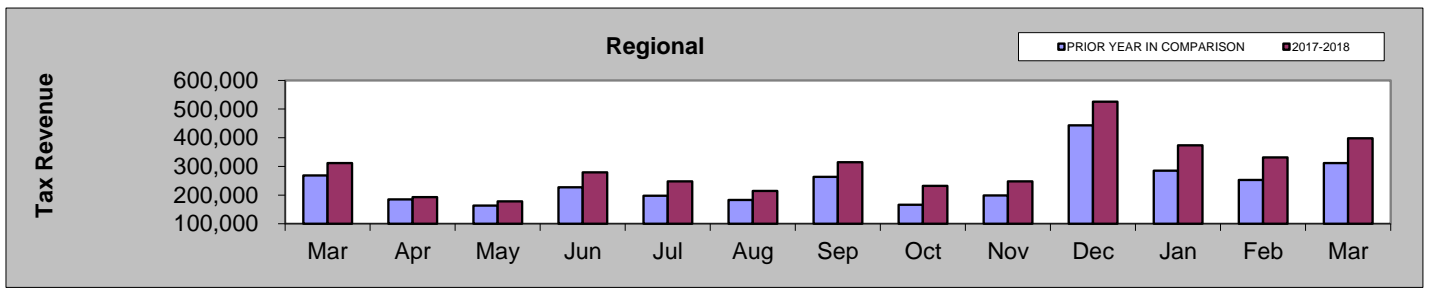
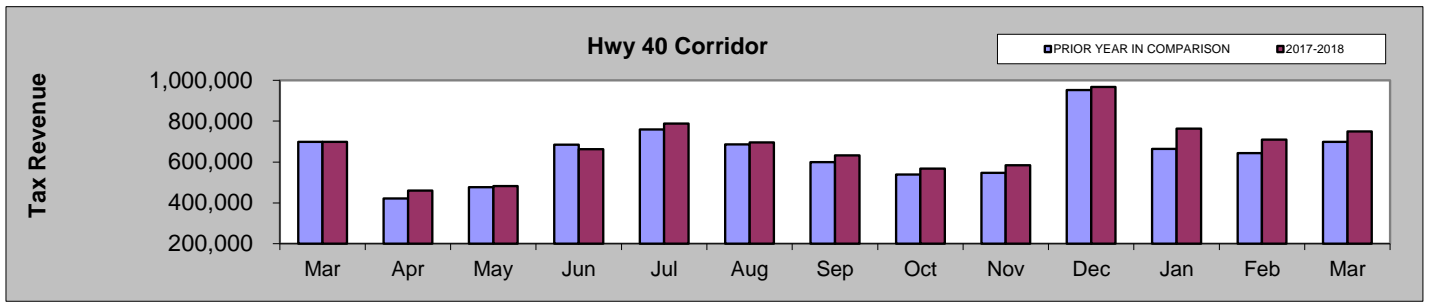
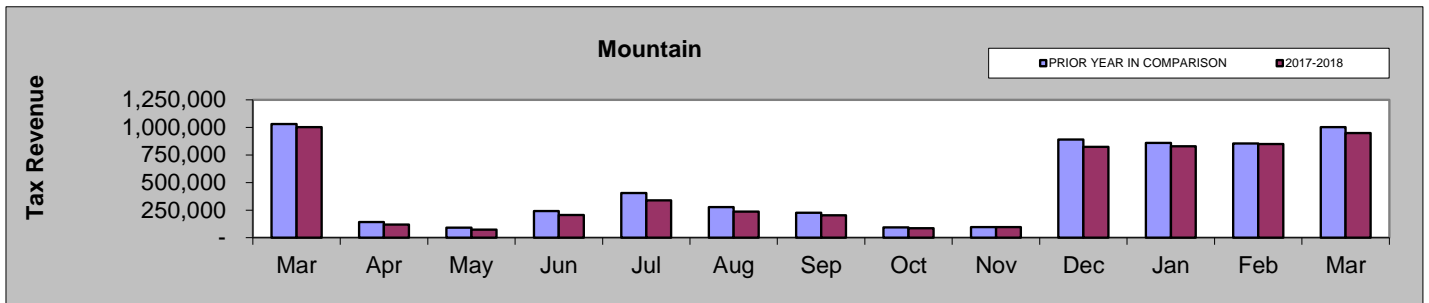
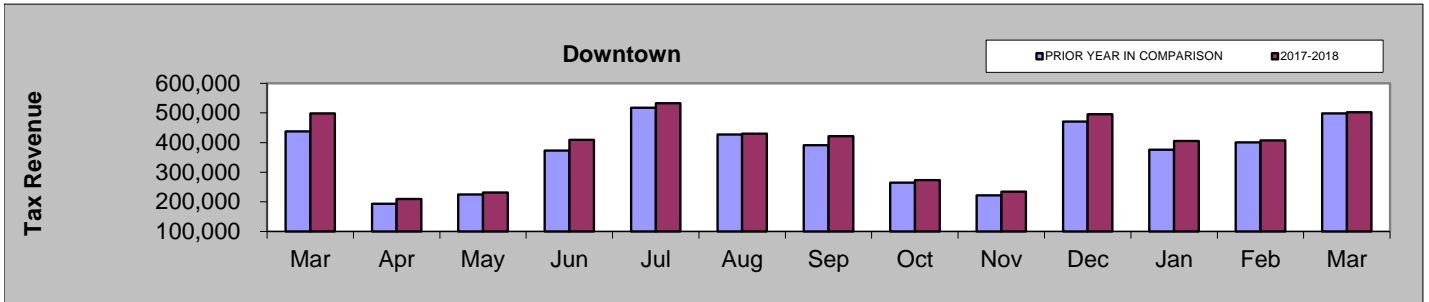


March 2017 - March 2018



MARCH COMPARISON BY AREA

Area	2018	2017	% change
Downtown	\$502,658	\$498,487	0.84%
Mountain	\$949,770	\$1,001,999	-5.21%
Hwy 40 Corridor	\$749,898	\$699,214	7.25%
Regional	\$397,674	\$311,831	27.53%
West Steamboat	\$307,966	\$291,838	5.53%

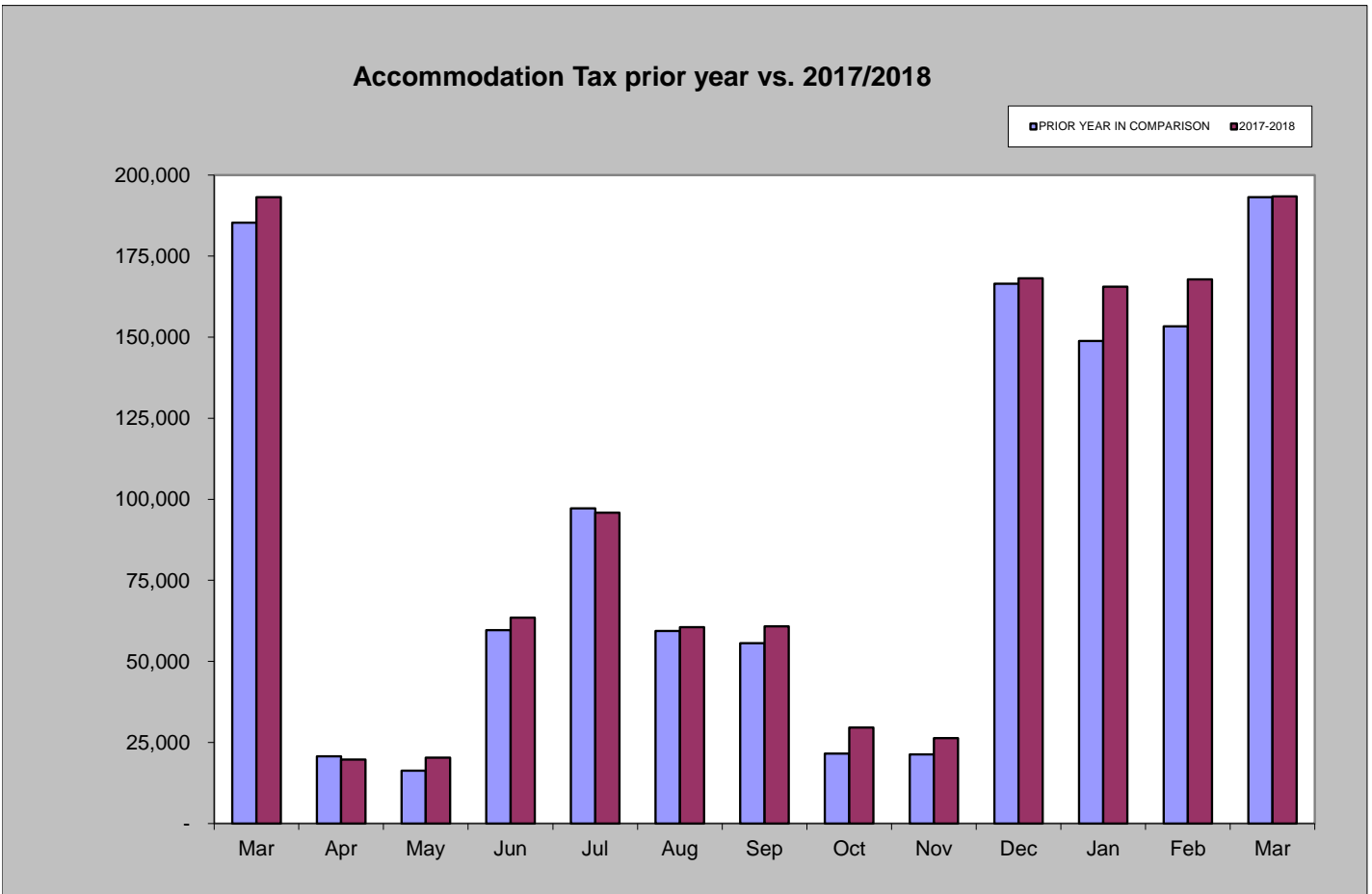


Accommodation Tax

March 2018 accommodation tax collections increased by 0.15% compared to March 2017.
 Year-to-date accommodation tax collections are 6.34% higher than those of 2017 year-to-date.

Accommodation Tax March 2018	Accommodation Tax March 2017	% increase/decrease over last March
\$193,452	\$193,158	0.15%

Accommodation Tax 2018 YTD	Accommodation Tax 2017 YTD	% increase/decrease over prior Year to Date
\$526,781	\$495,360	6.34%



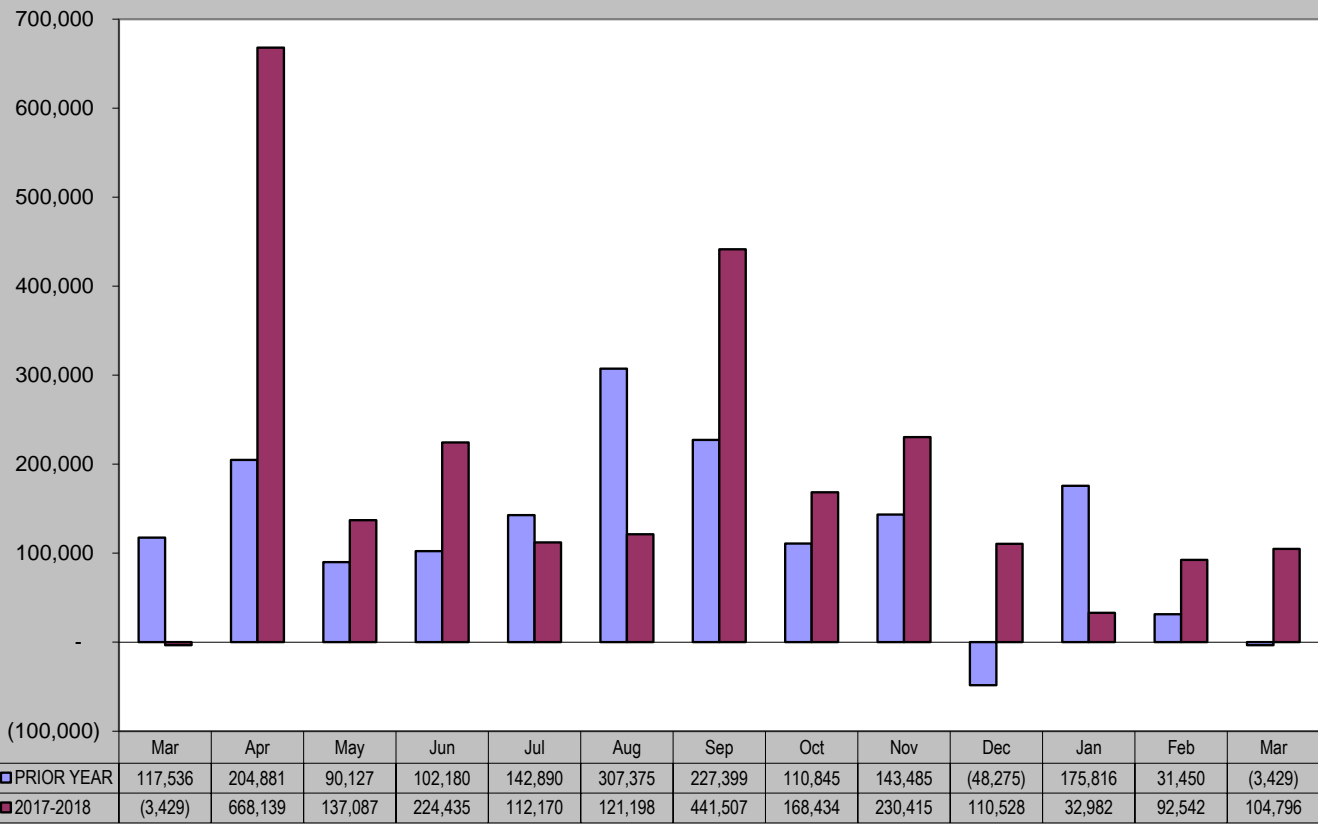
Building Use Tax

March 2018 building use tax collections increased by 3156% compared to March 2017.
 Year-to-date building use tax collections are 13% higher than those of 2017 year-to-date.

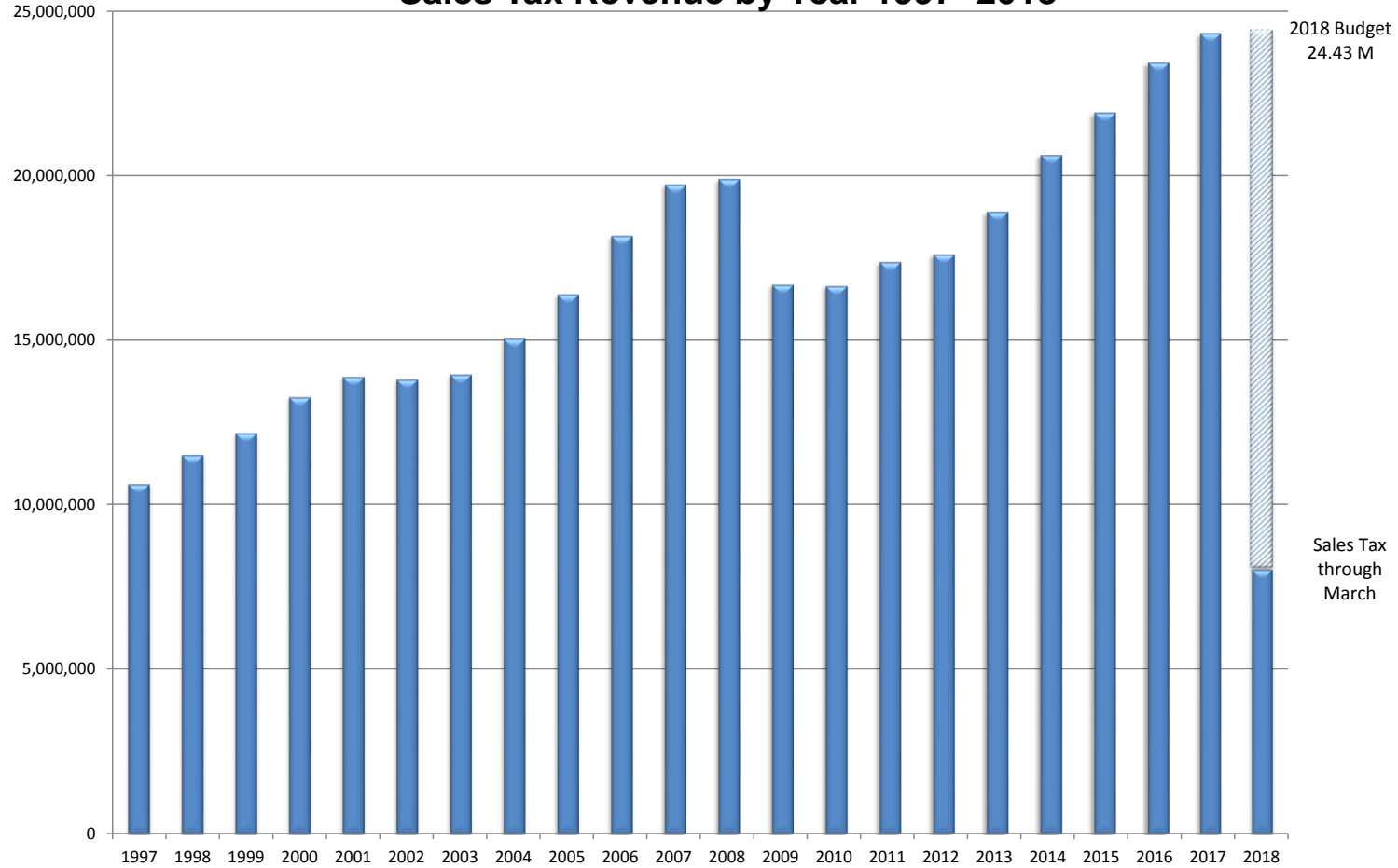
Building Use Tax March 2018	Building Use Tax March 2017	% increase/decrease over last March
\$104,796	-\$3,429	3156%

Building Use Tax 2018 YTD	Building Use Tax 2017 YTD	% increase/decrease over prior Year to Date
\$230,321	\$203,838	13%

Building Use Tax - prior year vs. 2017/2018



Sales Tax Revenue by Year 1997- 2018



Totals by Year	
1997	\$ 10,672,320
1998	\$ 11,559,068
1999	\$ 12,218,807
2000	\$ 13,304,983
2001	\$ 13,921,749
2002	\$ 13,841,283
2003	\$ 13,994,753
2004	\$ 15,079,016
2005	\$ 16,415,430
2006	\$ 18,192,298
2007	\$ 19,743,507
2008	\$ 19,904,293
2009	\$ 16,710,291
2010	\$ 16,669,735
2011	\$ 17,398,312
2012	\$ 17,632,019
2013	\$ 18,922,955
2014	\$ 20,635,678
2015	\$ 21,920,371
2016	\$ 23,438,573
2017	\$ 24,321,560
* 2018	\$ 8,091,725

* 2018 total is year-to-date through March