



December 2017 Taxes, Remitted in January 2018 Sales, Use, and Accommodation Tax Report

This City of Steamboat Springs Sales, Use, and Accommodation Tax Report examines tax collections for the month of December 2017, which were remitted to the City in January 2018.

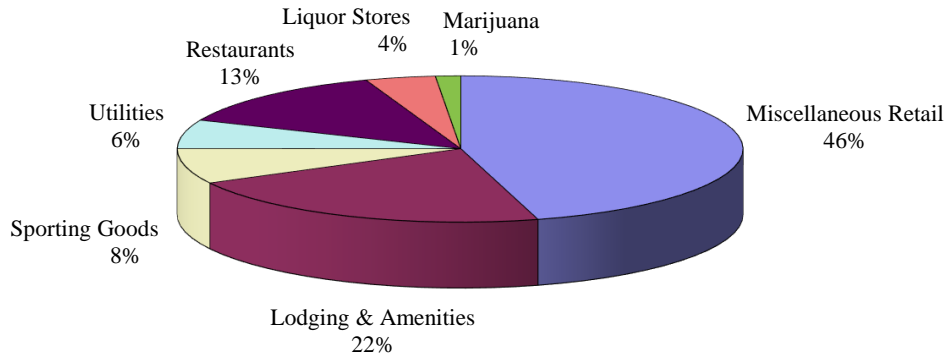
Sales Tax

December 2017 sales tax collections increased by 1.26% compared to December 2016.
Year-to-date total sales tax collections are 3.60% higher than those of 2016 year-to-date.

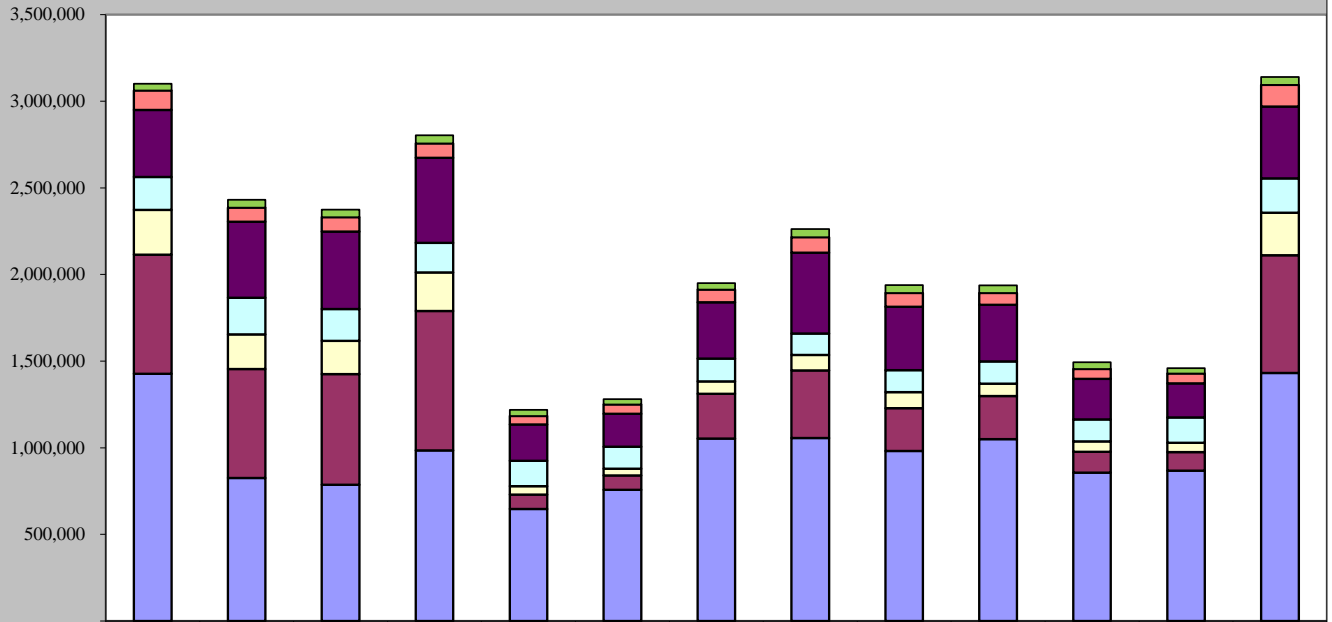
Sales Tax December 2017	Sales Tax December 2016	% increase/decrease over last December
\$3,139,511	\$3,100,308	1.26%

Sales Tax 2017 YTD	Sales Tax 2016 YTD	% increase/decrease over prior Year to Date
\$24,286,163	\$23,441,974	3.60%

December 2017 Sales Categories



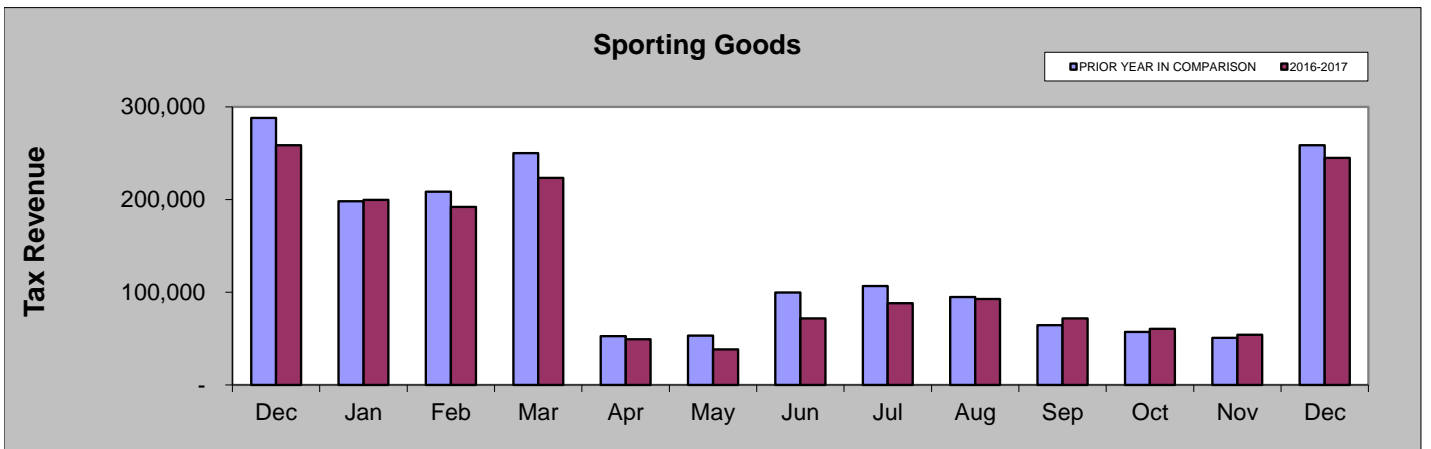
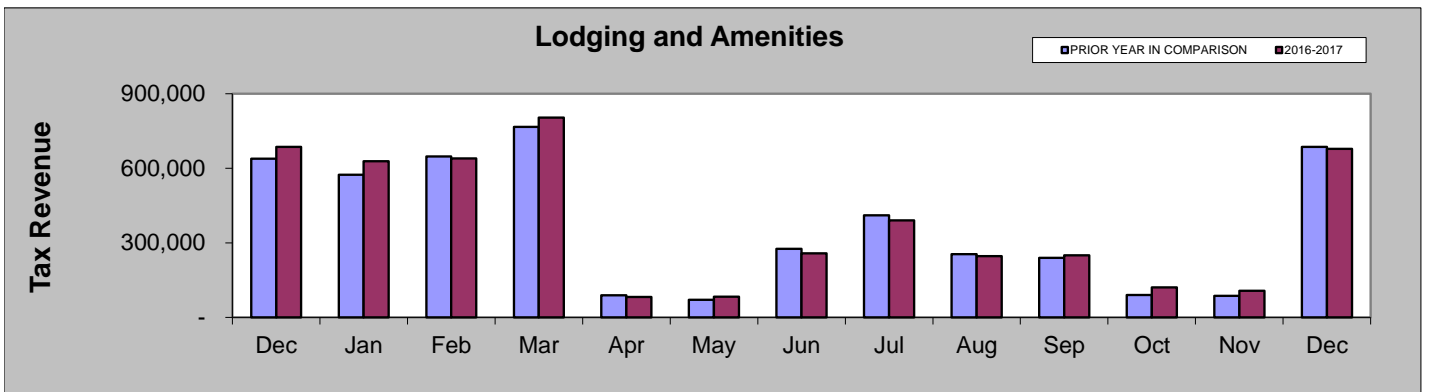
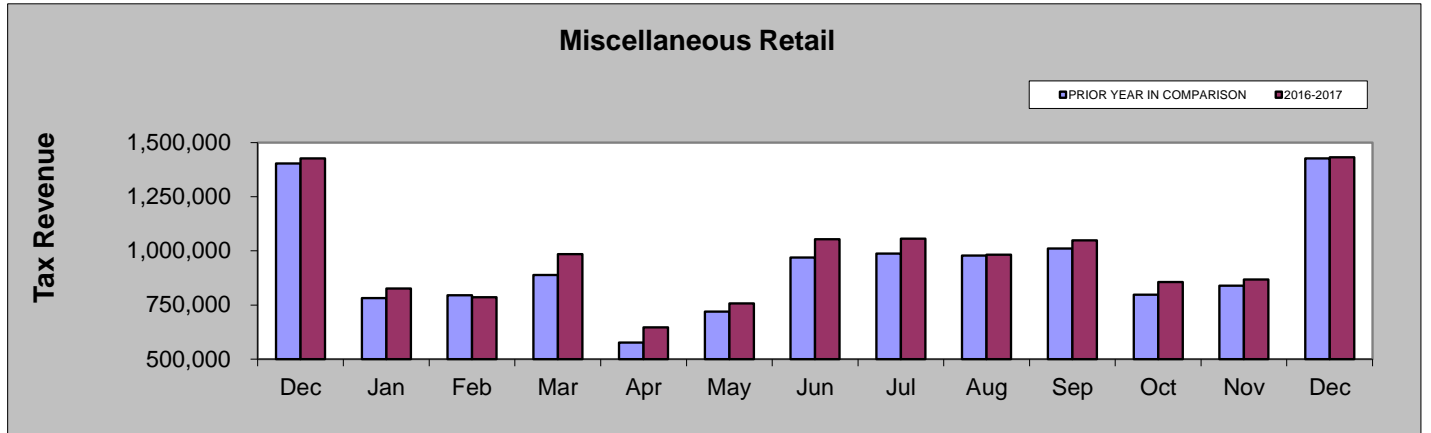
December 2016 - December 2017

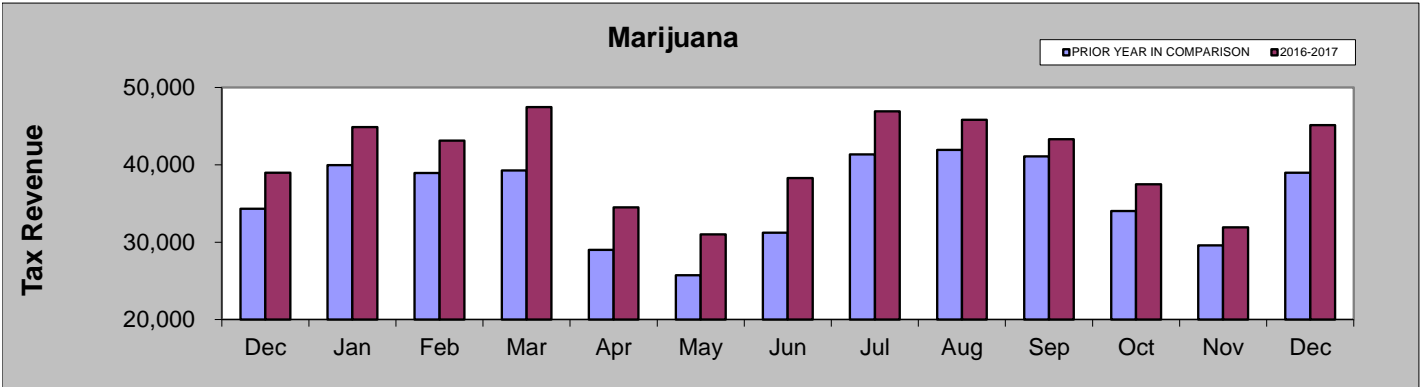
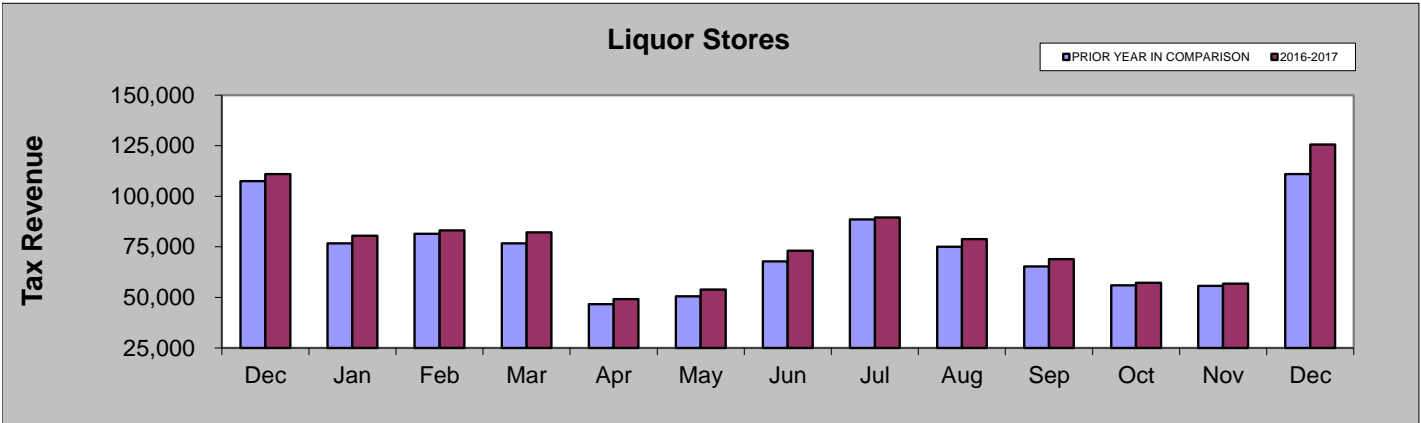
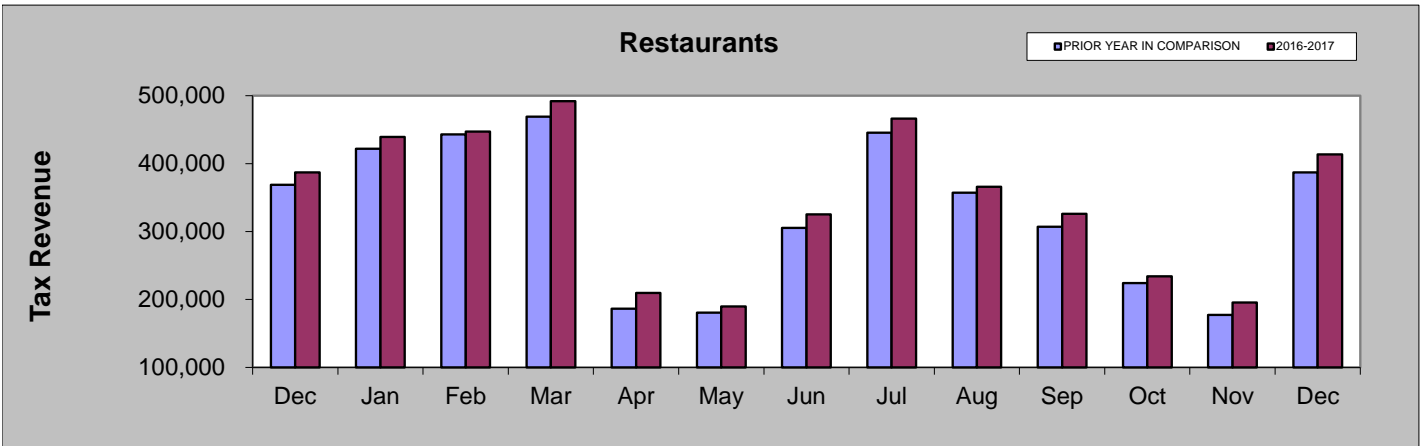
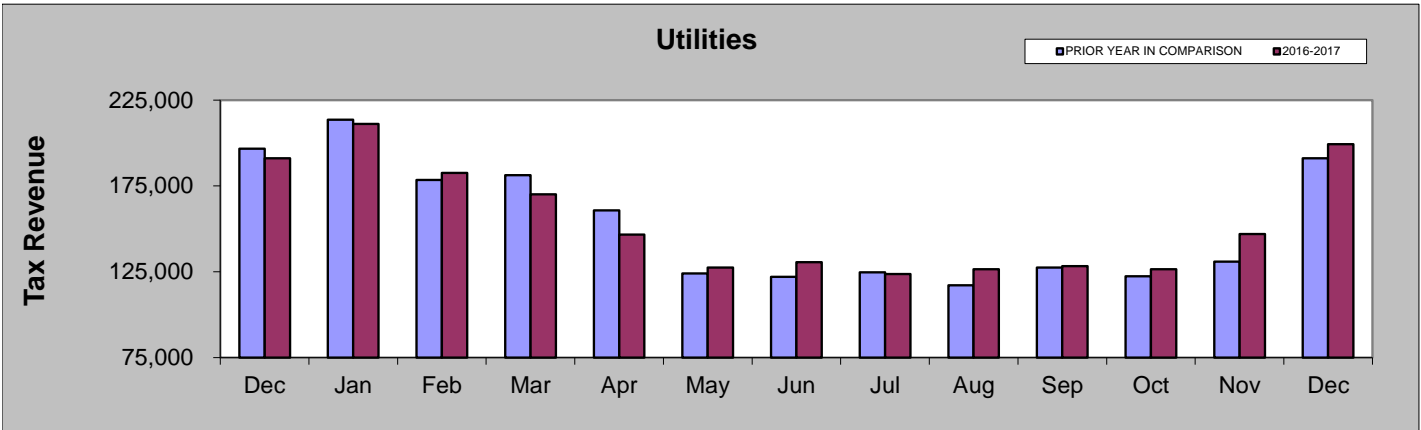


	Dec-16	Jan-17	Feb-17	Mar-17	Apr-17	May-17	Jun-17	Jul-17	Aug-17	Sep-17	Oct-17	Nov-17	Dec-17
Marijuana	38,972	44,878	43,110	47,454	34,510	31,021	38,304	46,910	45,817	43,327	37,495	31,913	45,146
Liquor Stores	110,973	80,551	83,172	82,179	49,185	53,847	73,163	89,541	78,774	68,892	57,191	56,771	125,660
Restaurants	386,864	439,459	447,186	491,868	209,780	189,651	325,368	466,212	365,998	326,063	234,045	195,335	413,457
Utilities	191,095	211,109	182,602	170,159	146,582	127,395	130,637	123,752	126,523	128,255	126,553	146,984	199,303
Sporting Goods	258,513	199,765	192,059	223,451	49,228	38,431	71,810	88,270	92,697	71,883	60,651	54,083	244,868
Lodging & Amenities	686,385	628,488	639,285	804,204	81,696	83,054	258,158	389,856	246,546	249,559	121,107	106,883	678,643
Miscellaneous Retail	1,427,506	826,263	786,210	984,522	647,137	757,116	1,053,373	1,056,927	982,089	1,049,096	855,628	867,607	1,432,434

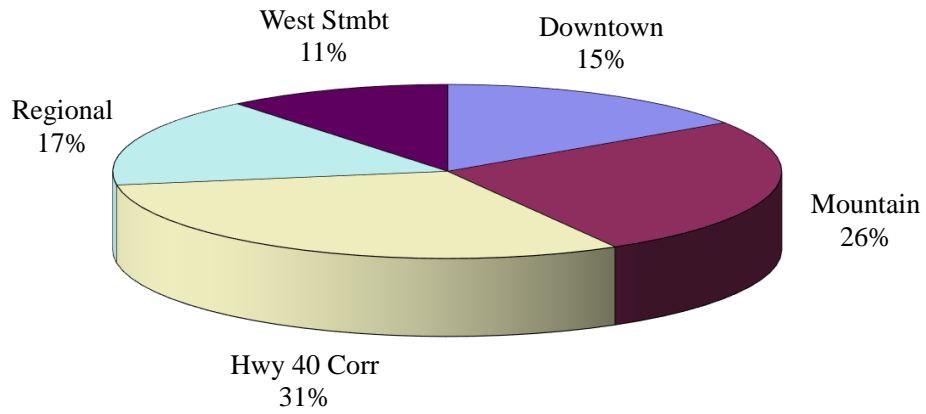
DECEMBER COMPARISON BY CATEGORY

	2017	2016	% change
Miscellaneous Retail	\$1,432,434	\$1,427,506	0.35%
Lodging and Amenities	\$678,643	\$686,385	-1.13%
Sporting Goods	\$244,868	\$258,513	-5.28%
Utilities	\$199,303	\$191,095	4.30%
Restaurants	\$413,457	\$386,864	6.87%
Liquor Stores	\$125,660	\$110,973	13.24%
Marijuana	\$45,146	\$38,972	15.84%

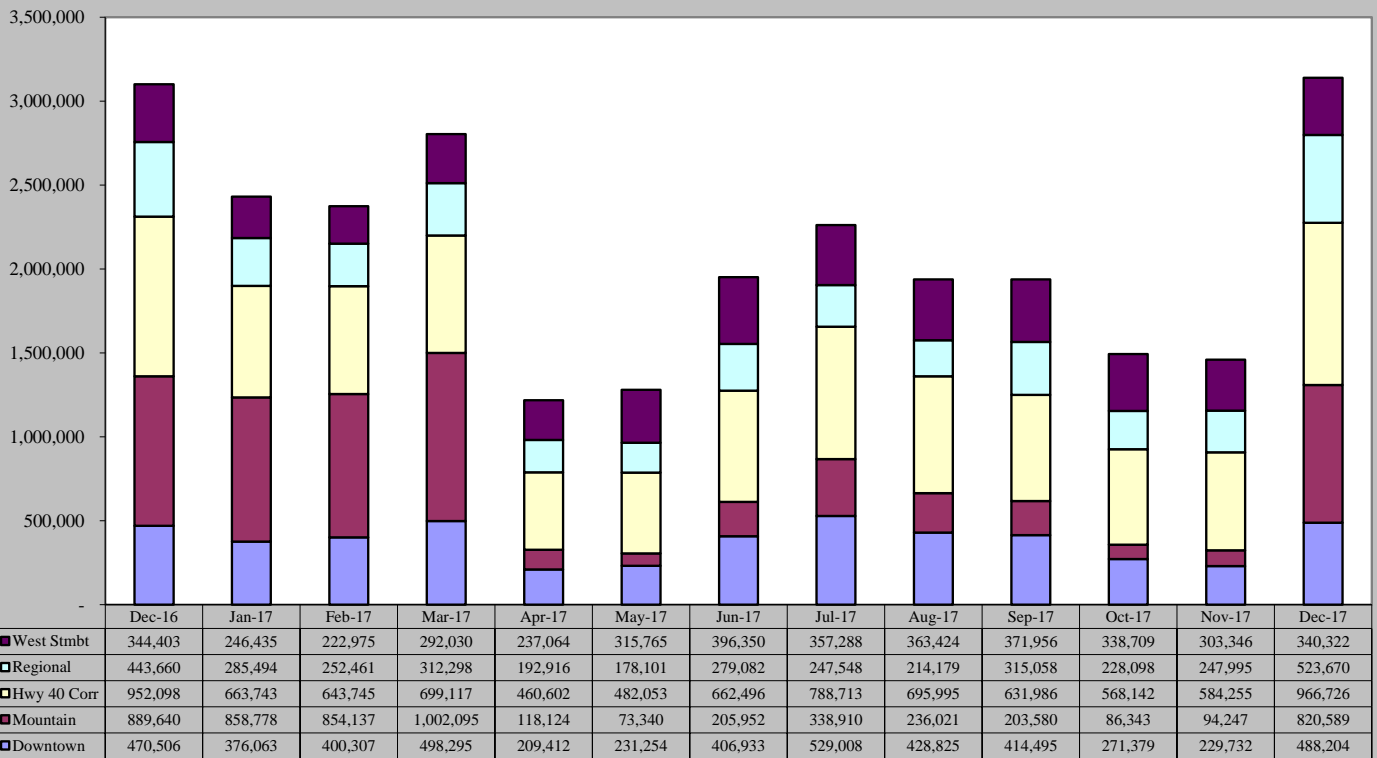




December 2017 Sales Tax By Area

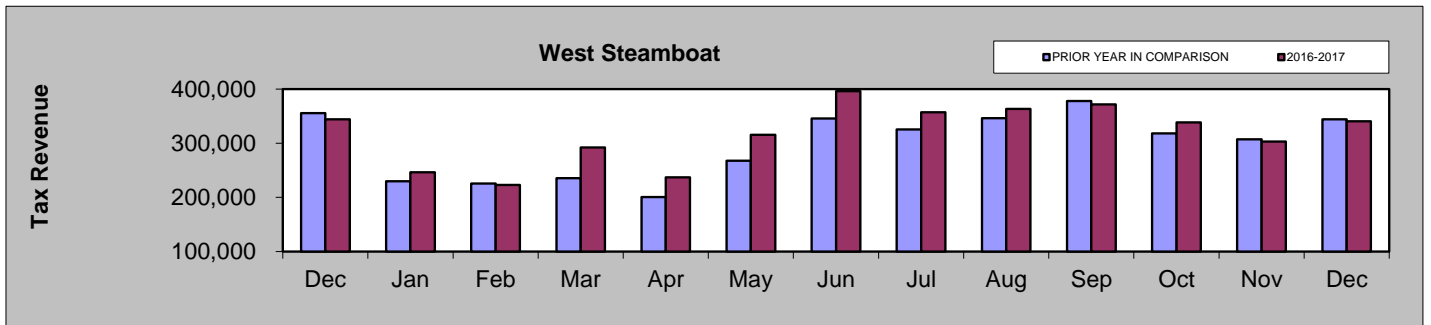
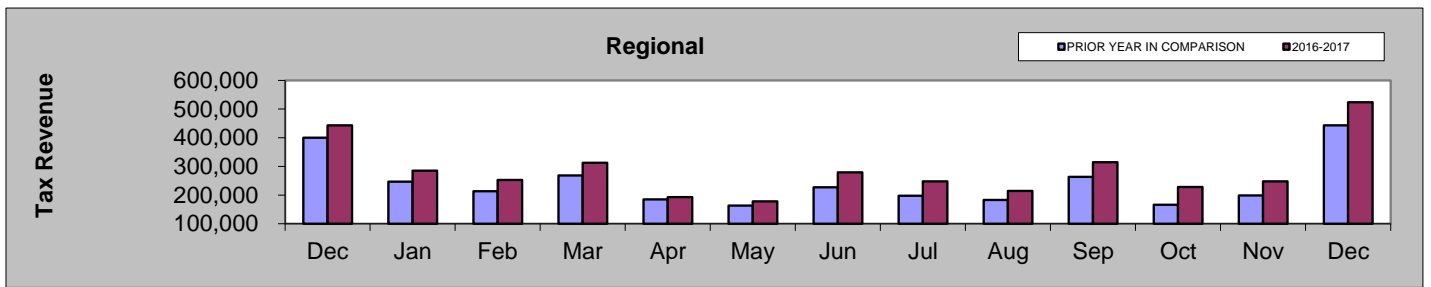
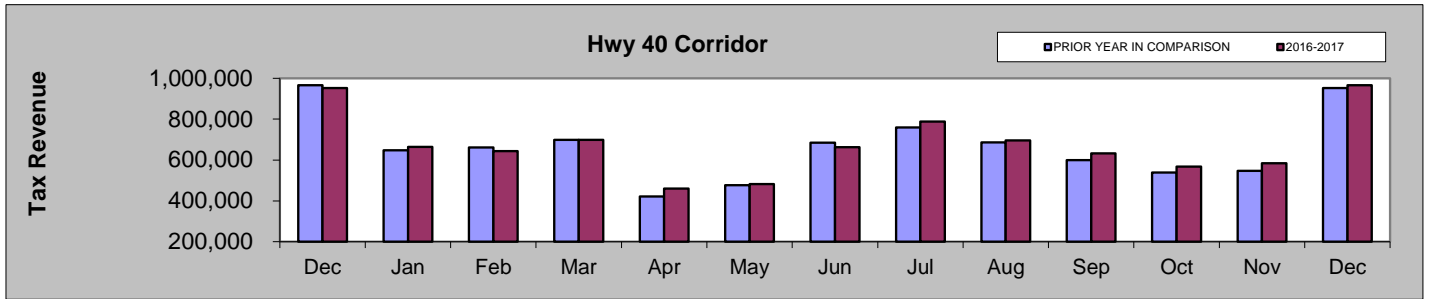
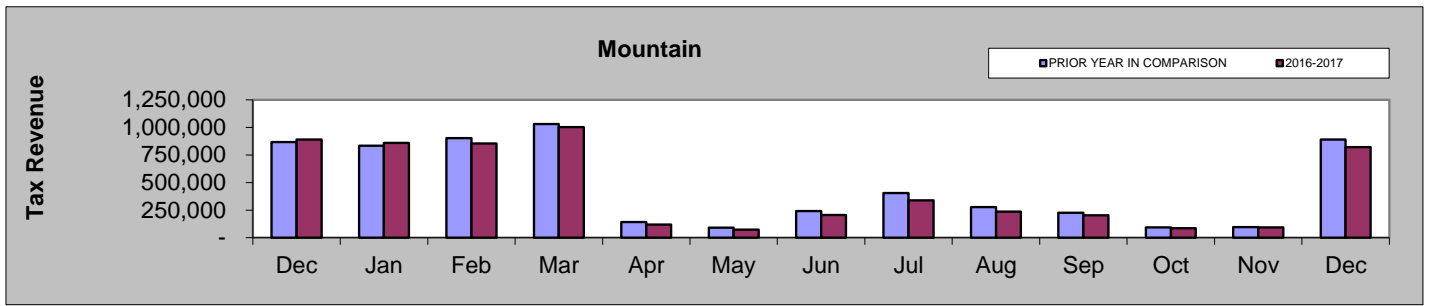
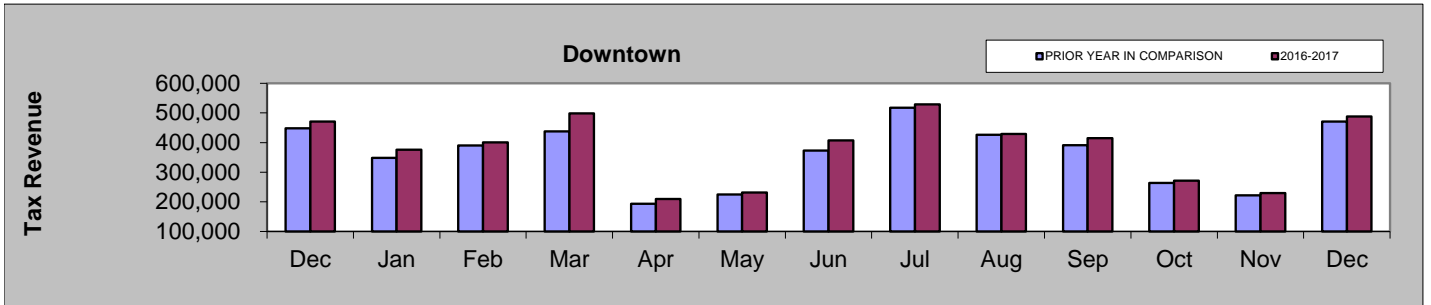


December 2016 - December 2017



DECEMBER COMPARISON BY AREA

Area	2017	2016	% change
Downtown	\$488,204	\$470,506	3.76%
Mountain	\$820,589	\$889,640	-7.76%
Hwy 40 Corridor	\$966,726	\$952,098	1.54%
Regional	\$523,670	\$443,660	18.03%
West Steamboat	\$340,322	\$344,403	-1.19%

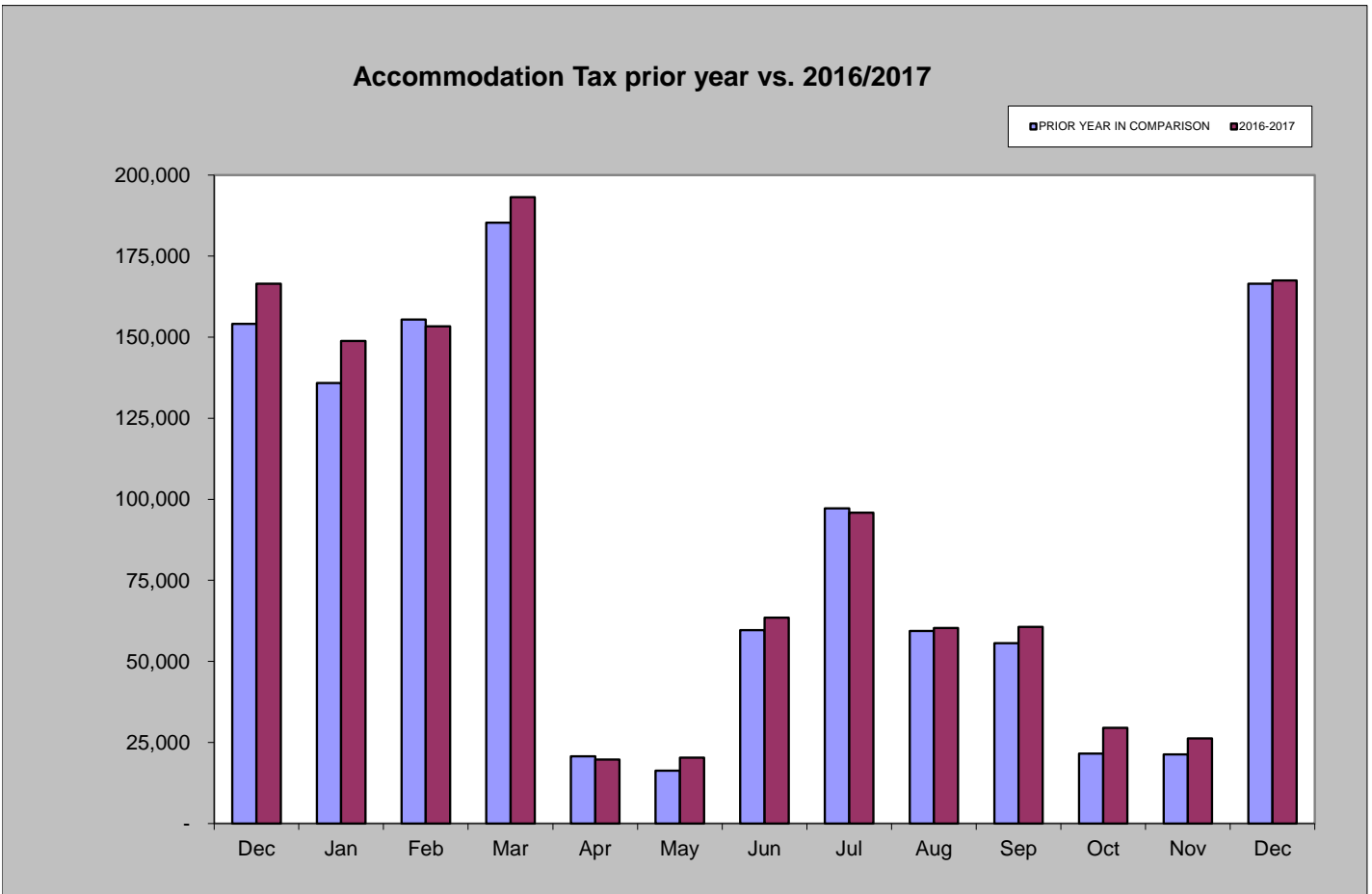


Accommodation Tax

December 2017 accommodation tax collections increased by 0.61% compared to December 2016.
 Year-to-date accommodation tax collections are 4.44% higher than those of 2016 year-to-date.

Accommodation Tax December 2017	Accommodation Tax December 2016	% increase/decrease over last December
\$167,538	\$166,515	0.61%

Accommodation Tax 2017 YTD	Accommodation Tax 2016 YTD	% increase/decrease over prior Year to Date
\$1,039,038	\$994,907	4.44%



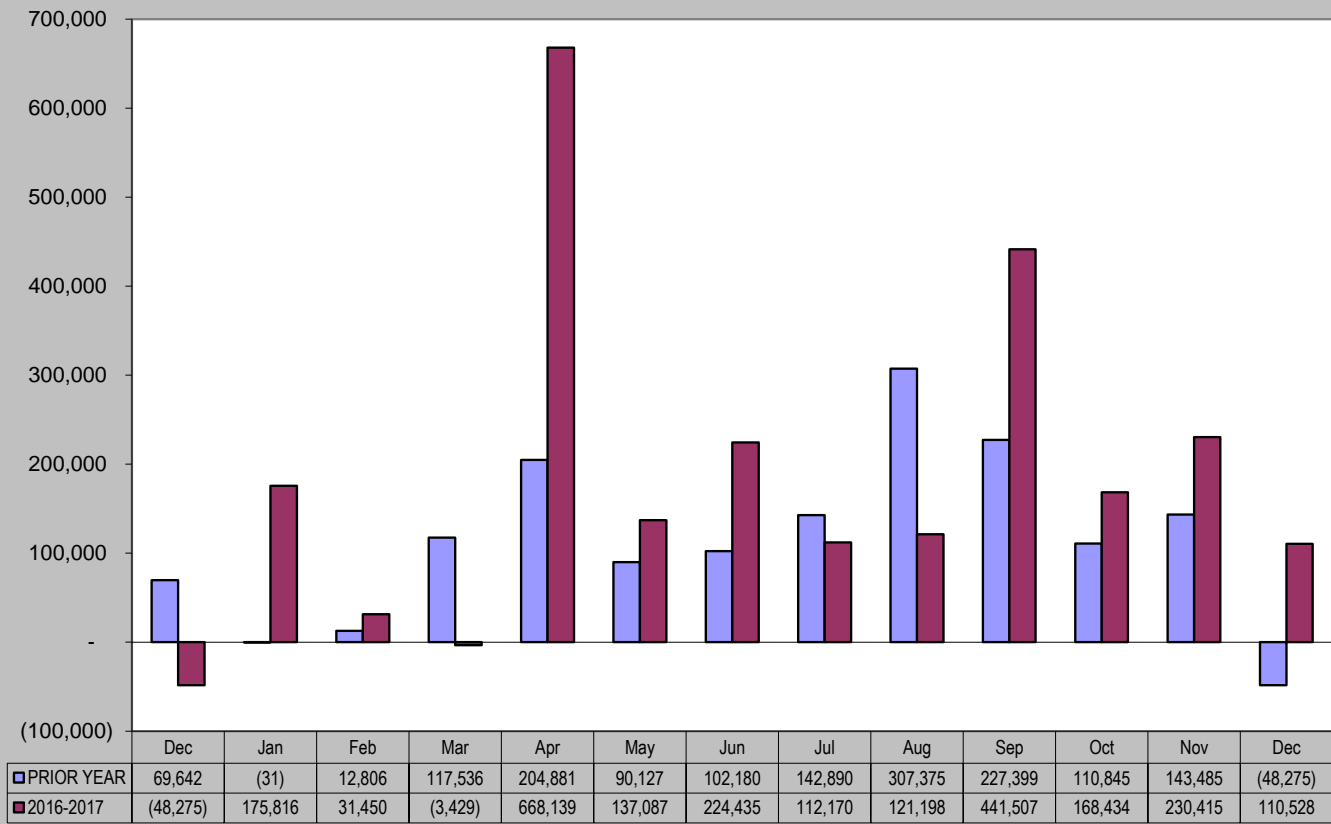
Building Use Tax

December 2017 building use tax collections increased by 329% compared to December 2016.
 Year-to-date building use tax collections are 71% higher than those of 2016 year-to-date.

Building Use Tax December 2017	Building Use Tax December 2016	% increase/decrease over last December
\$110,528	-\$48,275	329%

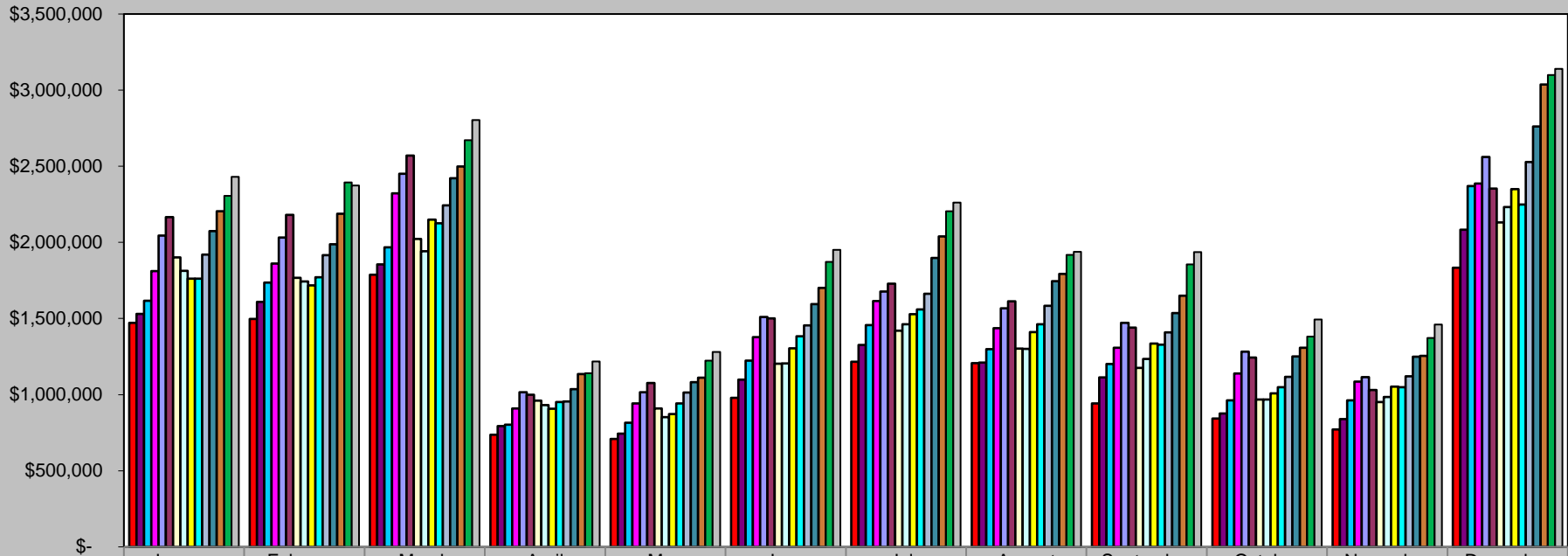
Building Use Tax 2017 YTD	Building Use Tax 2016 YTD	% increase/decrease over prior Year to Date
\$2,417,750	\$1,411,218	71%

Building Use Tax - prior year vs. 2016/2017



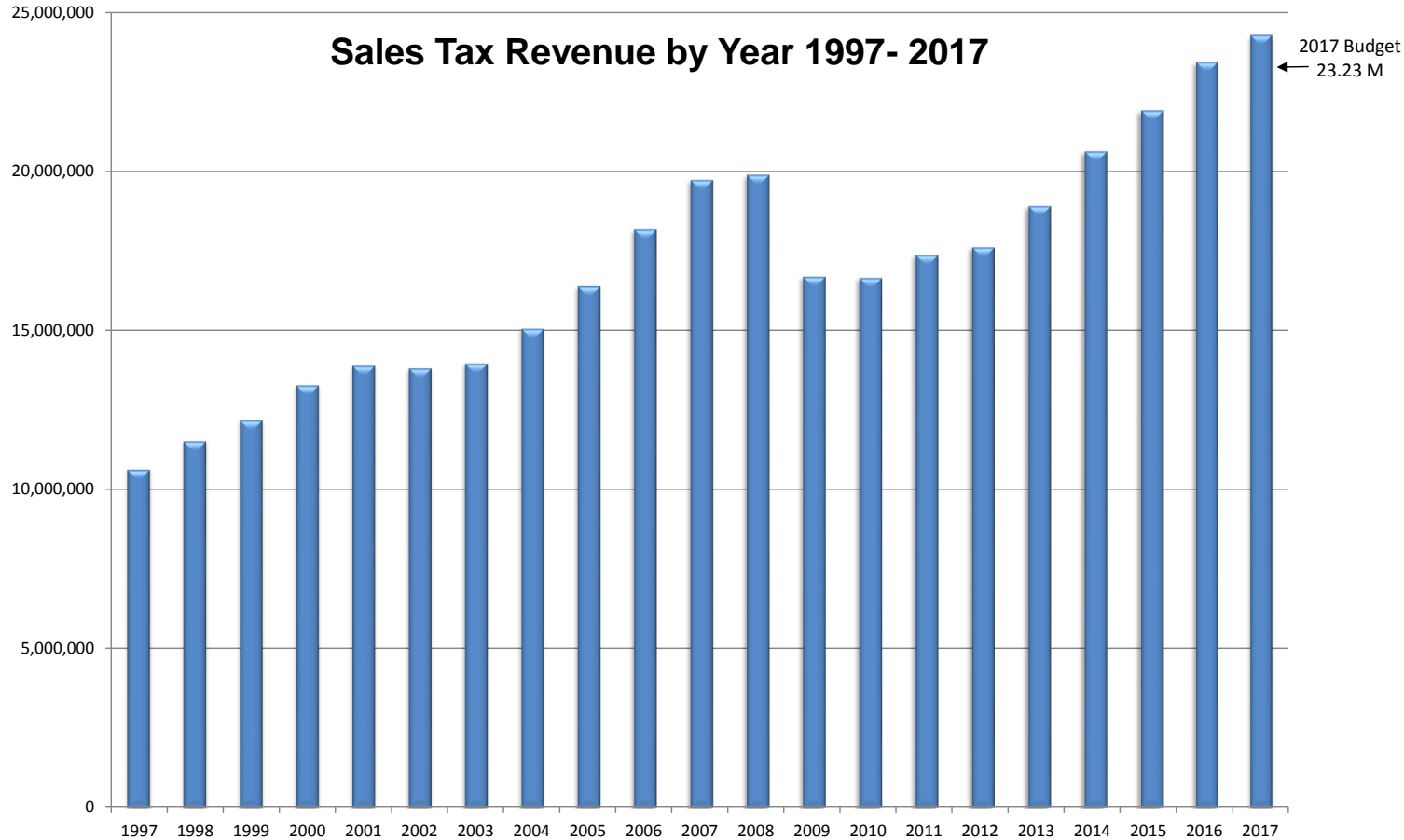
Historical Sales Tax Data

Sales Tax Totals - 2003 to 2017



	January	February	March	April	May	June	July	August	September	October	November	December
2003	\$1,471,061	1,497,398	1,787,877	737,255	708,947	979,861	1,215,159	1,207,373	942,596	842,980	770,632	1,833,614
2004	\$1,530,388	1,609,507	1,855,895	793,619	744,456	1,097,619	1,325,813	1,209,657	1,112,747	875,854	839,590	2,083,871
2005	\$1,617,152	1,735,422	1,968,239	803,359	815,925	1,223,263	1,457,514	1,299,302	1,201,406	962,731	961,551	2,369,566
2006	\$1,811,413	1,861,558	2,322,443	908,584	941,595	1,377,269	1,614,695	1,436,115	1,307,845	1,139,648	1,084,858	2,386,275
2007	\$2,044,667	2,032,045	2,450,620	1,016,601	1,015,101	1,510,706	1,676,821	1,567,534	1,470,714	1,281,546	1,115,446	2,561,705
2008	\$2,166,093	2,180,532	2,570,347	999,144	1,077,244	1,500,946	1,728,329	1,612,531	1,440,373	1,244,023	1,030,654	2,354,077
2009	\$1,900,660	1,767,622	2,022,205	960,333	908,729	1,203,304	1,419,472	1,301,838	1,176,374	967,698	951,706	2,130,350
2010	\$1,813,155	1,743,152	1,942,237	931,573	853,085	1,204,077	1,462,648	1,300,401	1,235,126	967,688	984,189	2,232,403
2011	\$1,761,158	1,716,963	2,150,278	907,893	872,240	1,304,067	1,528,476	1,411,387	1,335,629	1,008,207	1,052,340	2,349,674
2012	\$1,761,959	1,770,126	2,125,388	951,540	941,877	1,383,426	1,559,801	1,461,392	1,328,744	1,048,827	1,049,425	2,249,514
2013	\$1,919,887	1,916,581	2,242,412	955,334	1,013,860	1,454,259	1,662,137	1,584,036	1,408,659	1,117,302	1,120,256	2,528,232
2014	\$2,073,559	1,988,146	2,421,883	1,035,139	1,082,596	1,595,084	1,896,956	1,745,617	1,535,341	1,250,229	1,249,980	2,761,147
2015	\$2,204,914	2,188,460	2,498,079	1,134,521	1,111,391	1,700,528	2,040,035	1,793,173	1,649,280	1,308,089	1,254,026	3,037,872
2016	\$2,306,434	2,393,851	2,671,877	1,141,424	1,224,092	1,872,237	2,204,605	1,918,639	1,856,102	1,381,059	1,371,347	3,100,308
2017	\$2,430,513	2,373,624	2,803,836	1,218,118	1,280,514	1,950,813	2,261,468	1,938,444	1,937,075	1,492,671	1,459,576	3,139,511

Sales Tax Revenue by Year 1997- 2017



Totals by Year	
1997	\$ 10,672,320
1998	\$ 11,559,068
1999	\$ 12,218,807
2000	\$ 13,304,983
2001	\$ 13,921,749
2002	\$ 13,841,283
2003	\$ 13,994,753
2004	\$ 15,079,016
2005	\$ 16,415,430
2006	\$ 18,192,298
2007	\$ 19,743,507
2008	\$ 19,904,293
2009	\$ 16,710,291
2010	\$ 16,669,735
2011	\$ 17,398,312
2012	\$ 17,632,019
2013	\$ 18,922,955
2014	\$ 20,635,678
2015	\$ 21,920,371
2016	\$ 23,441,974
2017	\$ 24,286,163