



November 2017 Taxes, Remitted in December 2017 Sales, Use, and Accommodation Tax Report

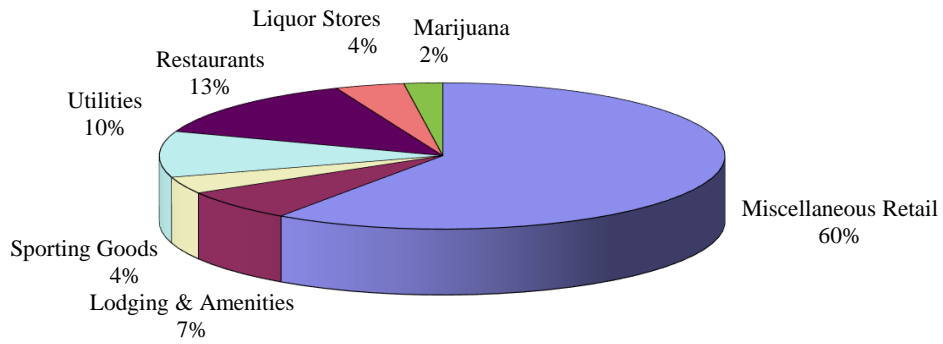
This City of Steamboat Springs Sales, Use, and Accommodation Tax Report examines tax collections for the month of November 2017, which were remitted to the City in December 2017.

Sales Tax

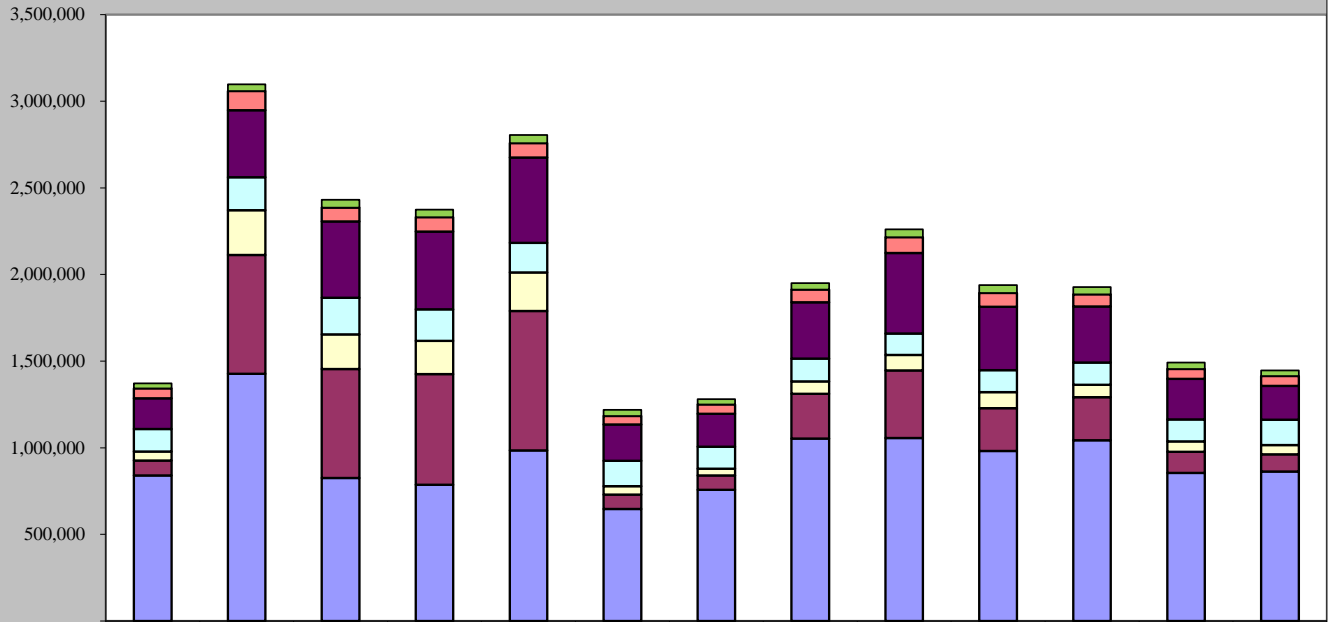
November 2017 sales tax collections increased by 5.44% compared to November 2016.
Year-to-date total sales tax collections are 3.85% higher than those of 2016 year-to-date.

Sales Tax November 2017	Sales Tax November 2016	% increase/decrease over last November
\$1,445,961	\$1,371,347	5.44%
Sales Tax 2017 YTD	Sales Tax 2016 YTD	% increase/decrease over prior Year to Date
\$21,125,239	\$20,341,666	3.85%

November 2017 Sales Categories



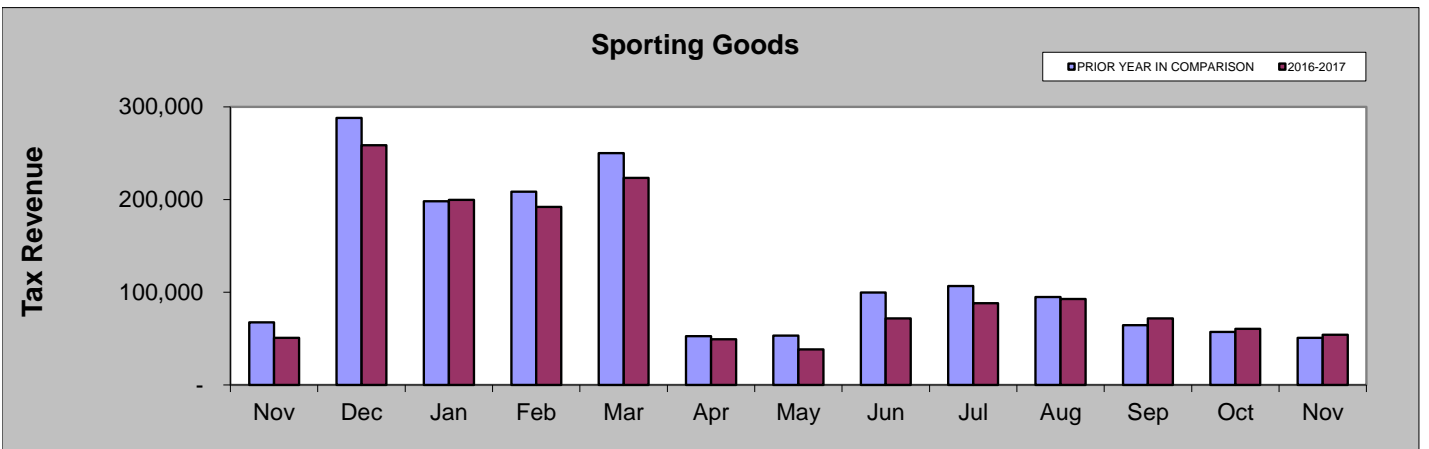
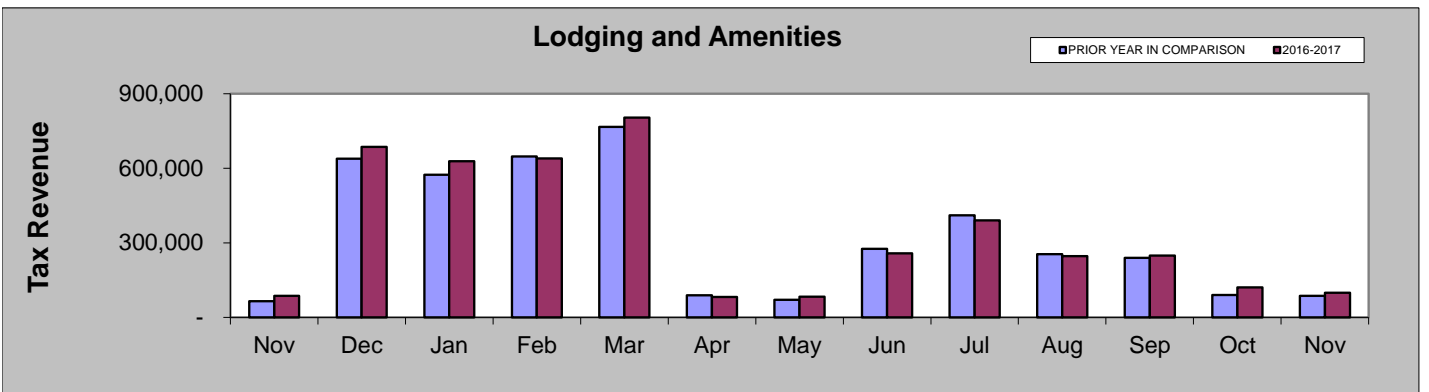
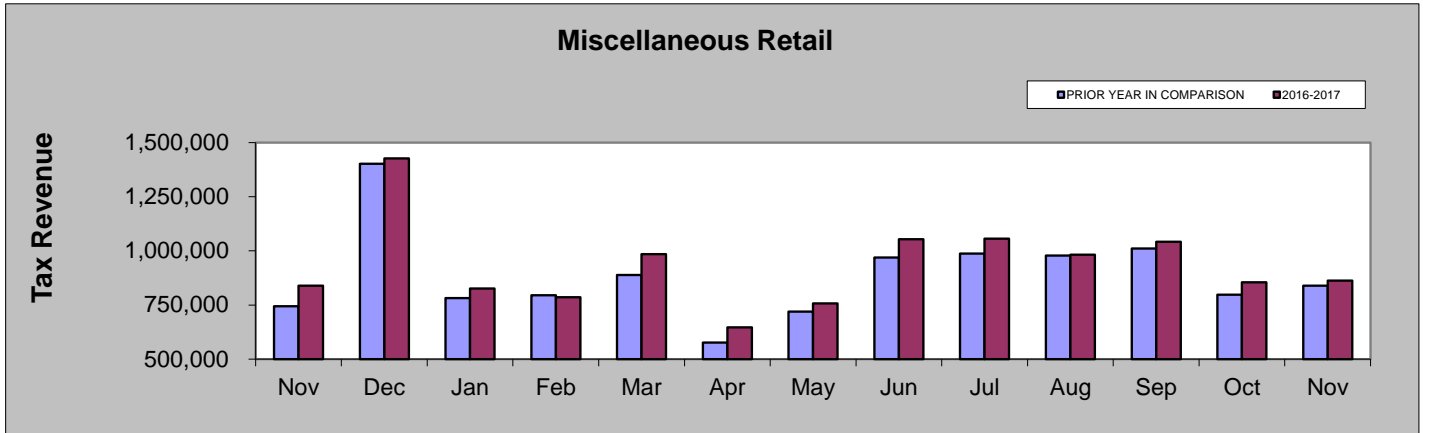
November 2016 - November 2017

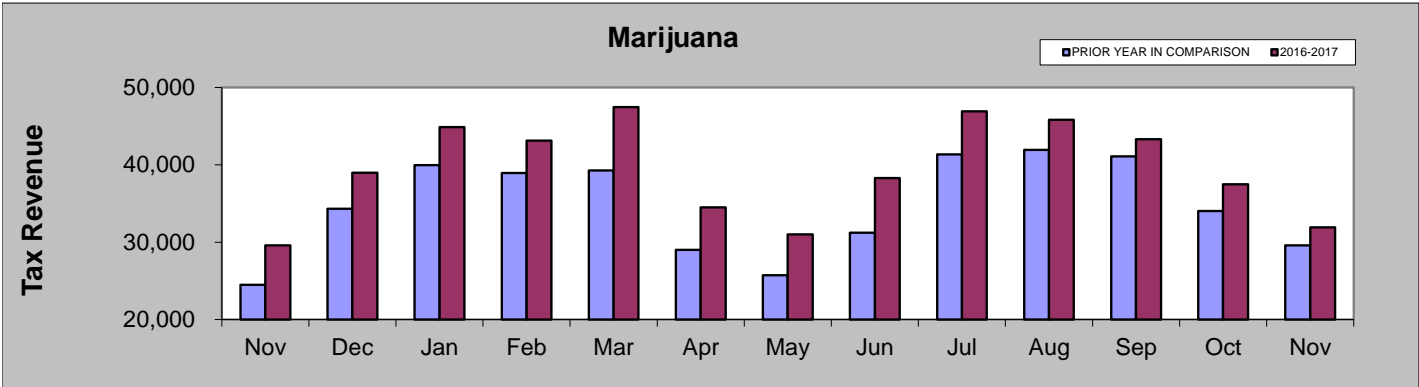
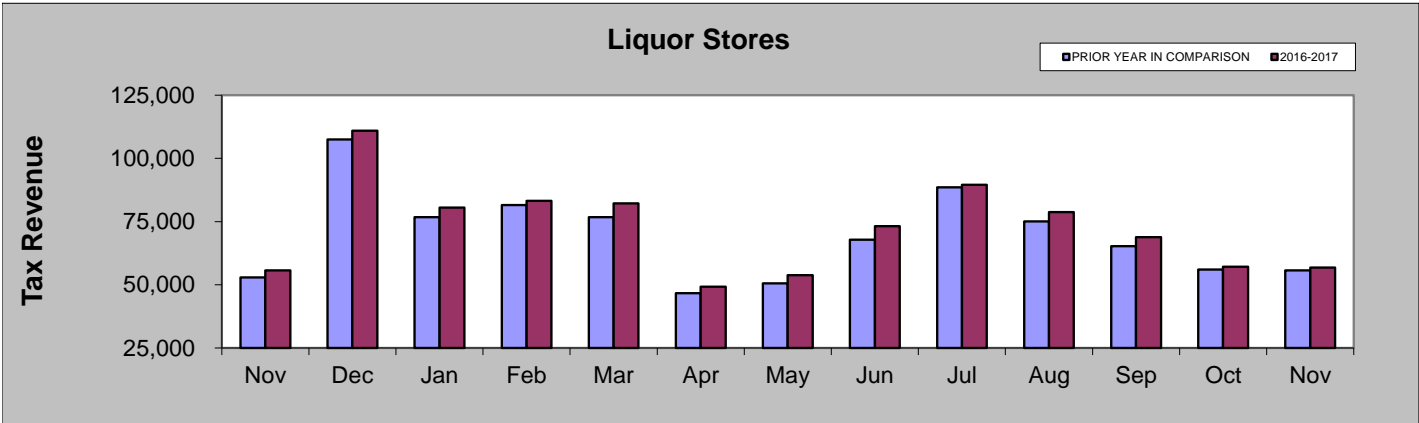
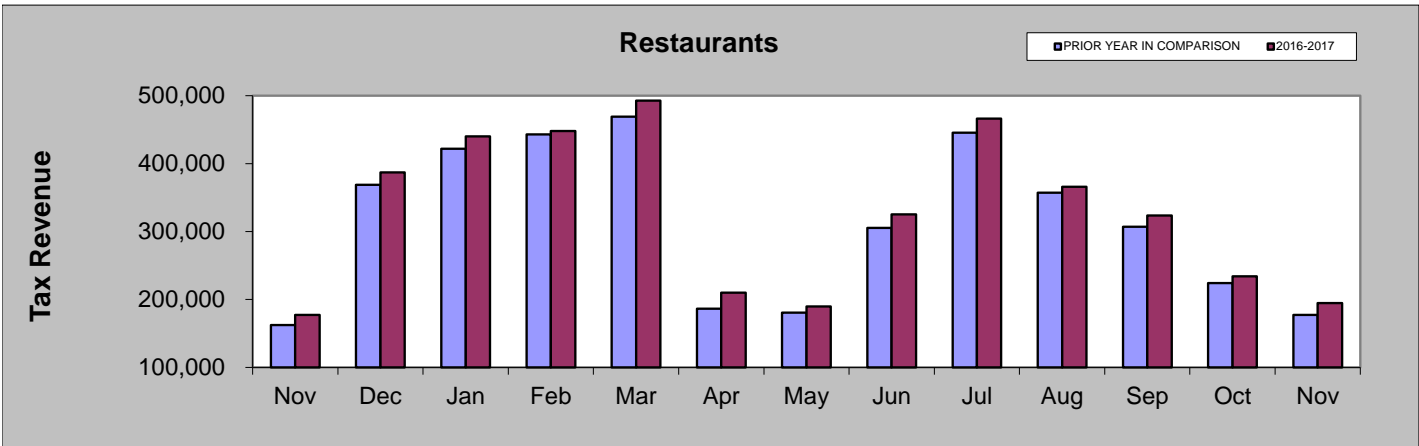
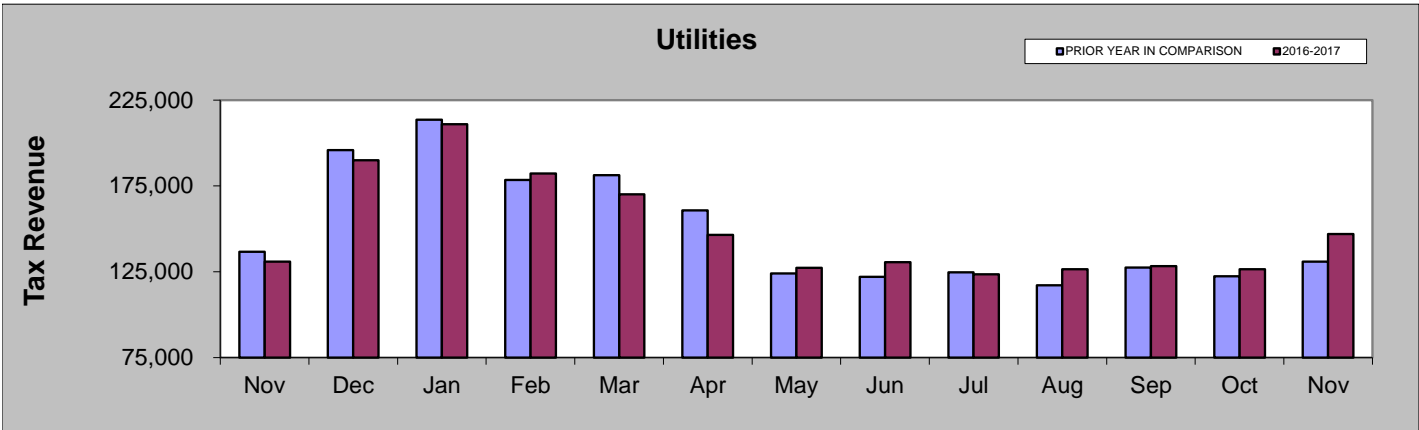


	Nov-16	Dec-16	Jan-17	Feb-17	Mar-17	Apr-17	May-17	Jun-17	Jul-17	Aug-17	Sep-17	Oct-17	Nov-17
Marijuana	29,593	38,972	44,878	43,110	47,454	34,510	31,021	38,304	46,910	45,817	43,327	37,495	31,913
Liquor Stores	55,694	110,973	80,551	83,172	82,179	49,185	53,847	73,163	89,541	78,774	68,892	57,191	56,771
Restaurants	177,501	386,864	440,284	448,074	492,725	209,980	189,651	325,368	466,212	365,998	323,463	234,045	194,654
Utilities	130,988	190,033	210,900	182,268	170,116	146,540	127,318	130,580	123,596	126,523	128,255	126,553	146,979
Sporting Goods	50,816	258,513	199,765	192,059	223,451	49,228	38,431	71,810	88,270	92,697	71,883	60,651	54,083
Lodging & Amenities	86,915	685,943	628,488	639,285	804,204	81,696	83,054	258,158	389,856	246,546	249,249	121,107	99,132
Miscellaneous Retail	839,839	1,426,688	826,263	786,210	984,522	647,137	757,116	1,053,301	1,056,844	982,085	1,042,659	855,484	862,428

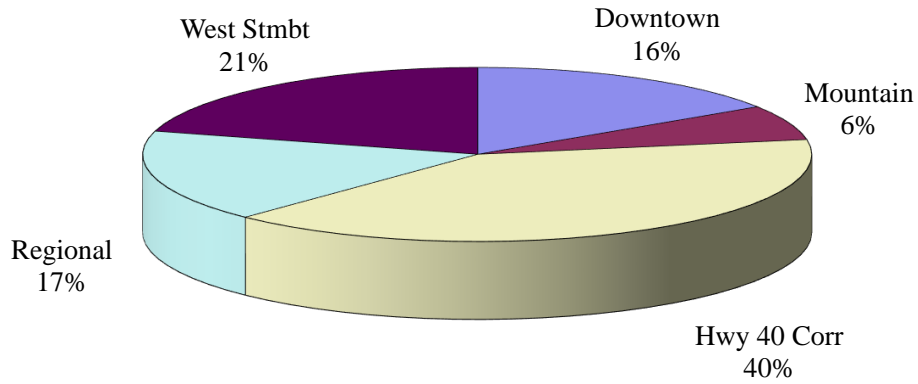
NOVEMBER COMPARISON BY CATEGORY

	2017	2016	% change
Miscellaneous Retail	\$862,428	\$839,839	2.69%
Lodging and Amenities	\$99,132	\$86,915	14.06%
Sporting Goods	\$54,083	\$50,816	6.43%
Utilities	\$146,979	\$130,988	12.21%
Restaurants	\$194,654	\$177,501	9.66%
Liquor Stores	\$56,771	\$55,694	1.93%
Marijuana	\$31,913	\$29,593	7.84%

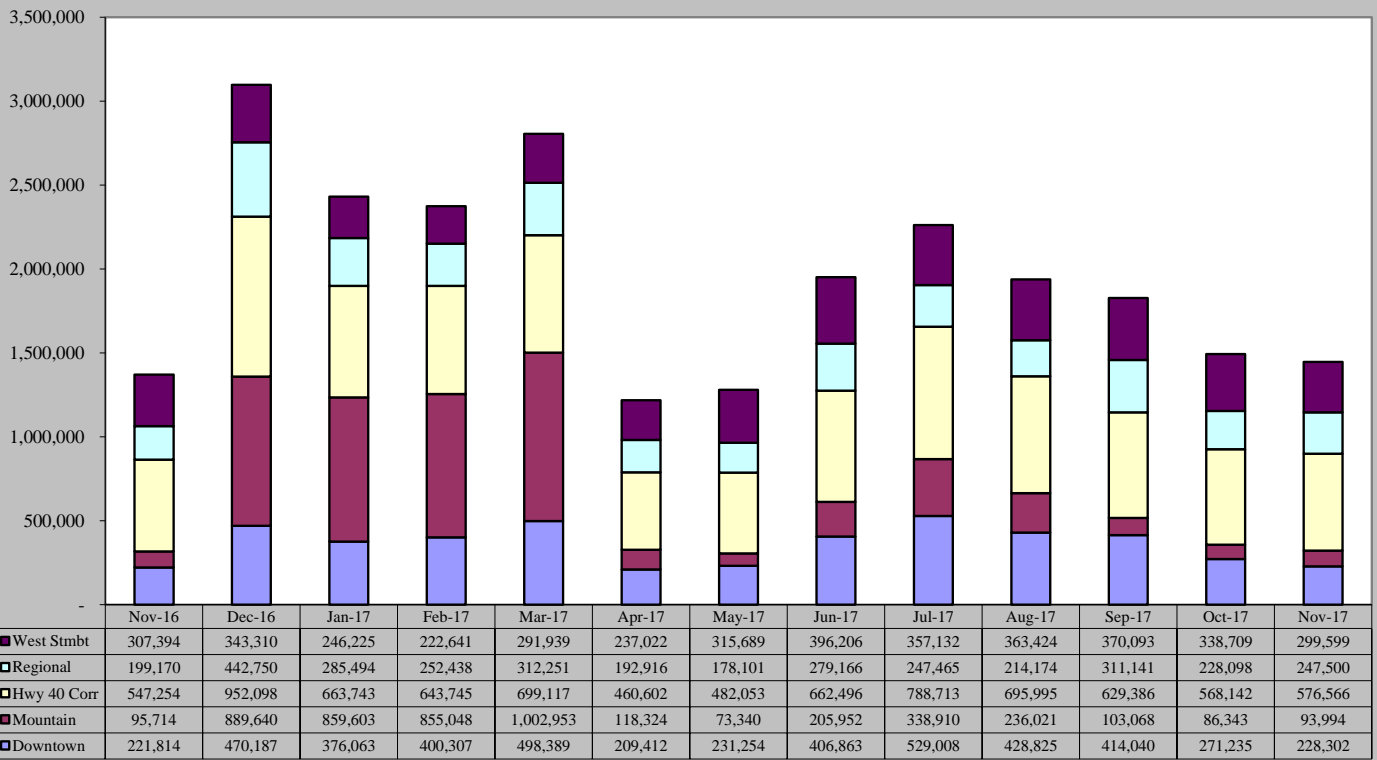




November 2017 Sales Tax By Area

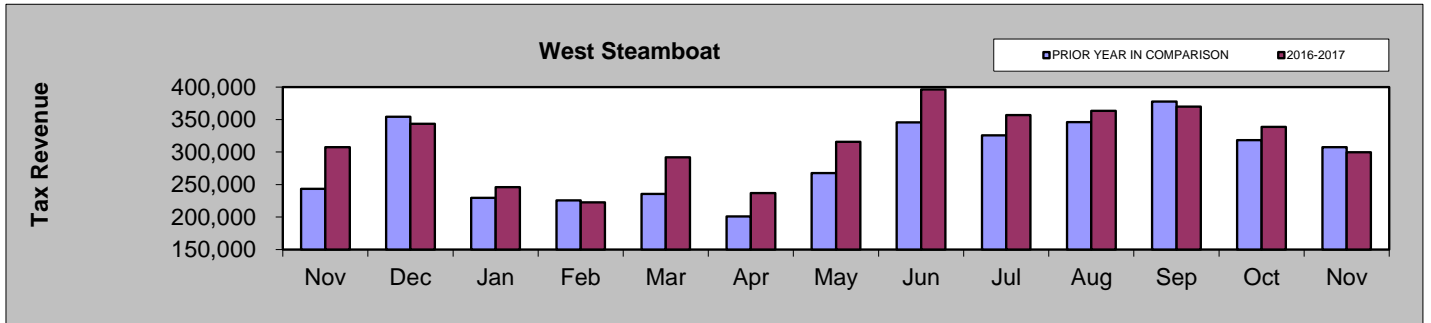
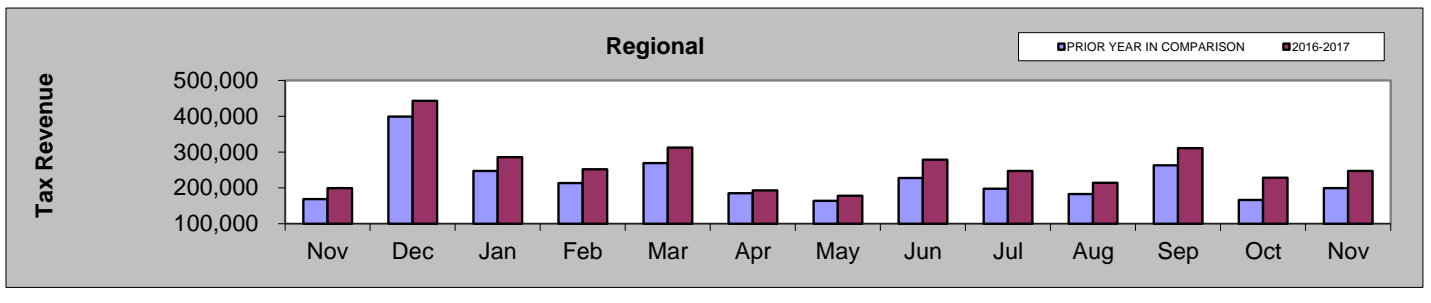
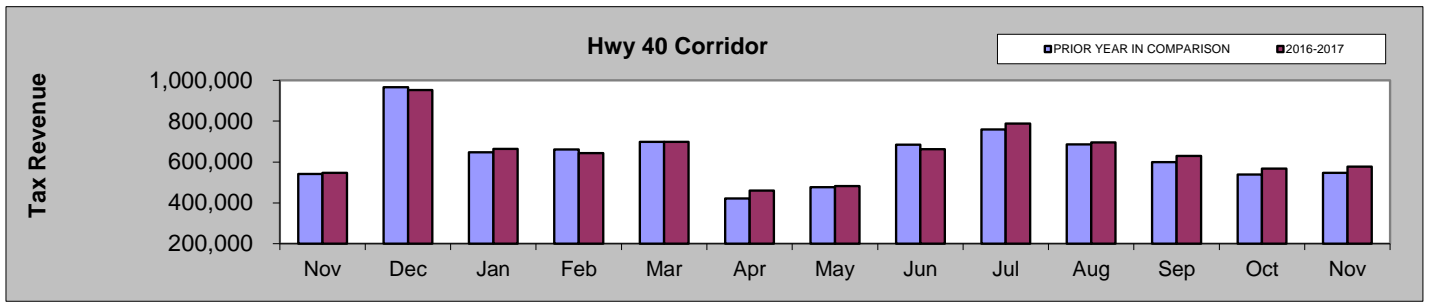
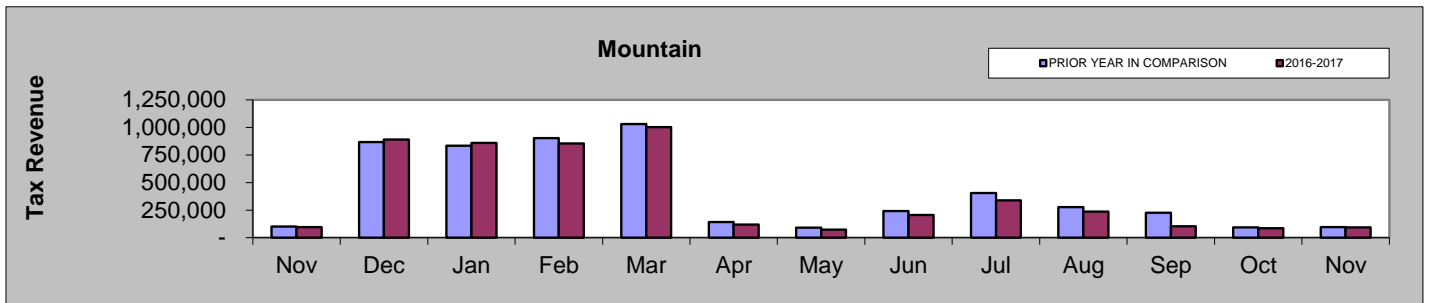
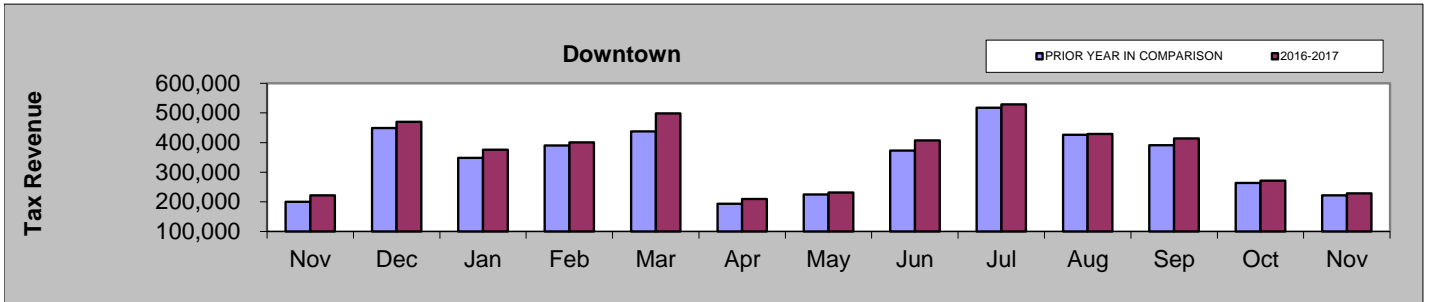


November 2016 - November 2017



NOVEMBER COMPARISON BY AREA

Area	2017	2016	% change
Downtown	\$228,302	\$221,814	2.92%
Mountain	\$93,994	\$95,714	-1.80%
Hwy 40 Corridor	\$576,566	\$547,254	5.36%
Regional	\$247,500	\$199,170	24.27%
West Steamboat	\$299,599	\$307,394	-2.54%

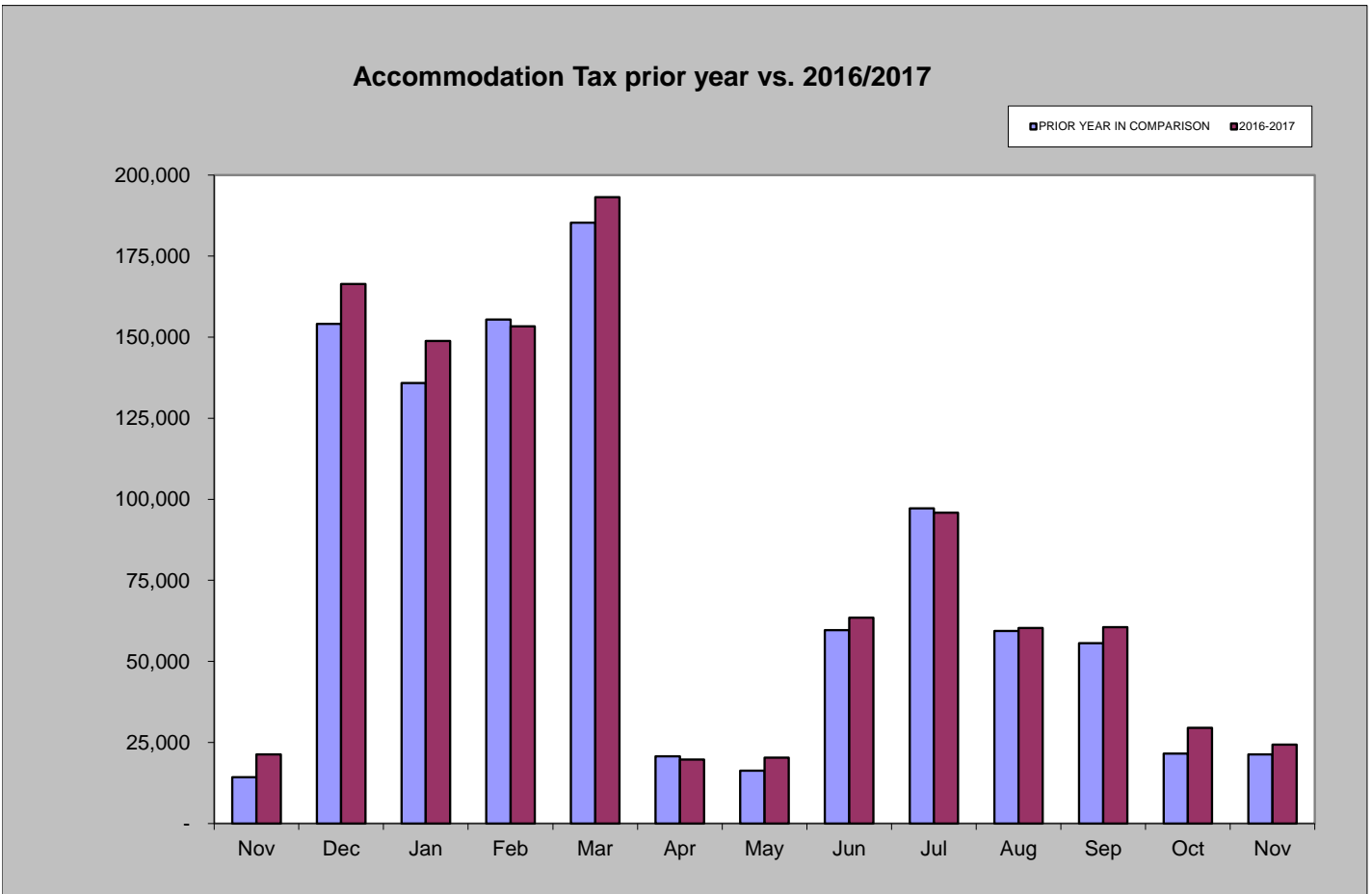


Accommodation Tax

November 2017 accommodation tax collections increased by 14.38% compared to November 2016.
 Year-to-date accommodation tax collections are 4.96% higher than those of 2016 year-to-date.

Accommodation Tax November 2017	Accommodation Tax November 2016	% increase/decrease over last November
\$24,346	\$21,286	14.38%

Accommodation Tax 2017 YTD	Accommodation Tax 2016 YTD	% increase/decrease over prior Year to Date
\$869,499	\$828,393	4.96%



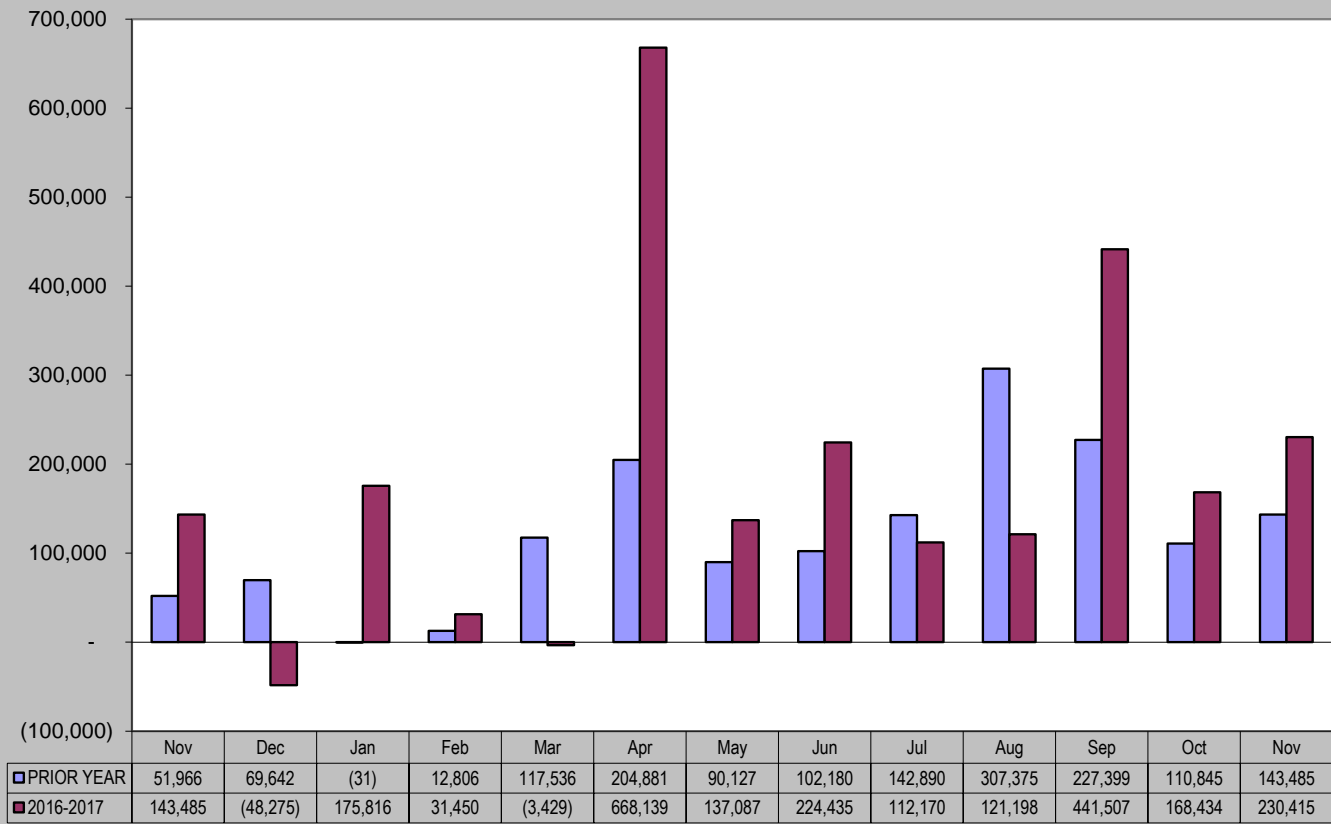
Building Use Tax

November 2017 building use tax collections increased by 61% compared to November 2016.
 Year-to-date building use tax collections are 58% higher than those of 2016 year-to-date.

Building Use Tax November 2017	Building Use Tax November 2016	% increase/decrease over last November
\$230,415	\$143,485	61%

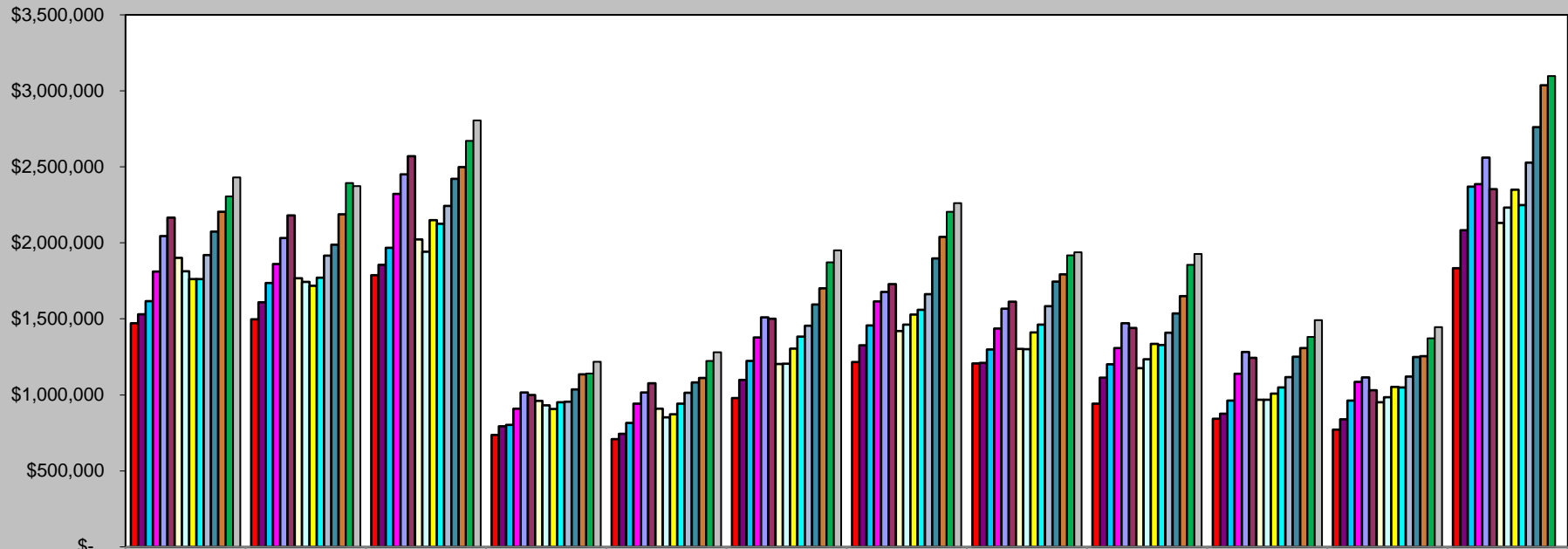
Building Use Tax 2017 YTD	Building Use Tax 2016 YTD	% increase/decrease over prior Year to Date
\$2,307,222	\$1,459,493	58%

Building Use Tax - prior year vs. 2016/2017



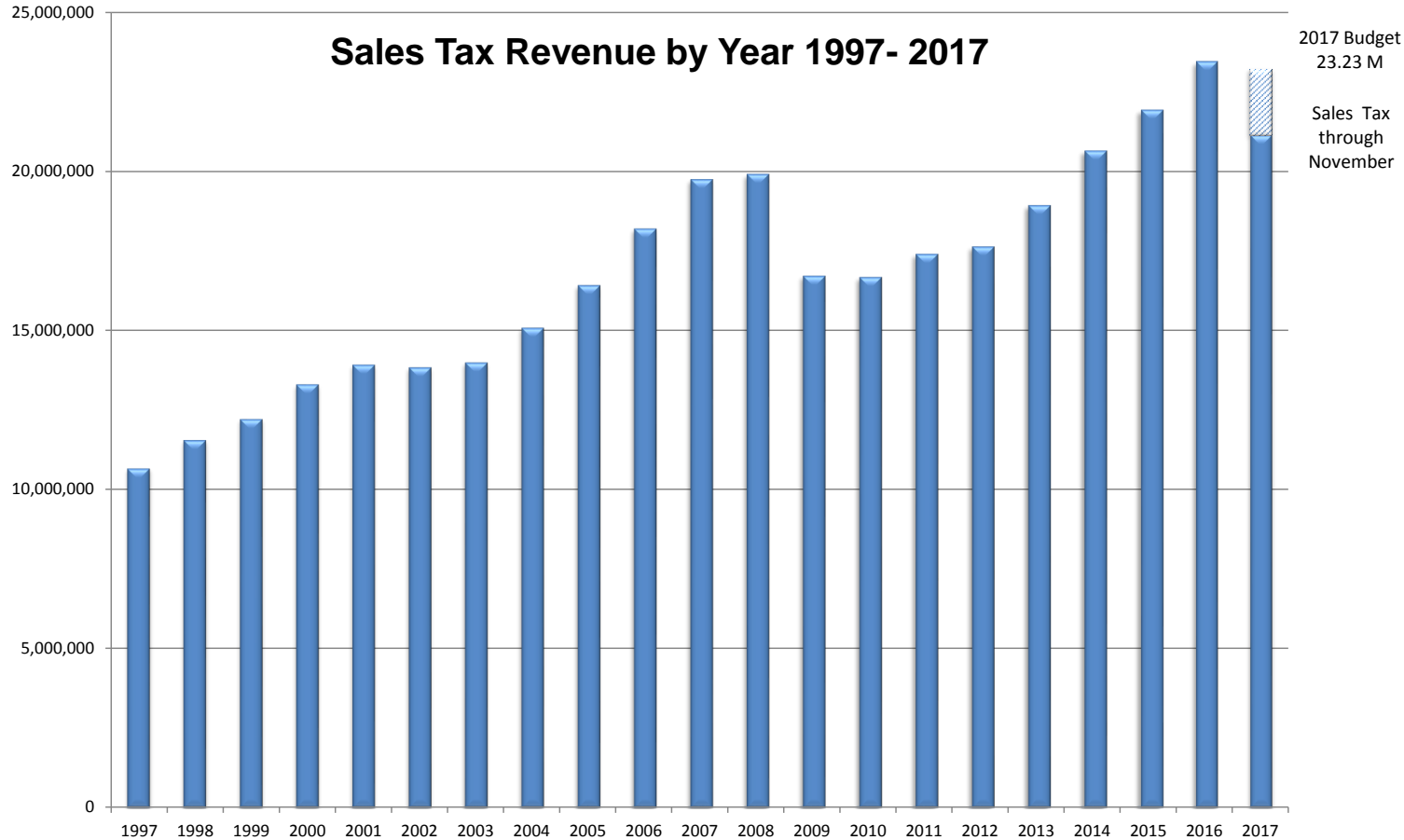
Historical Sales Tax Data

Sales Tax Totals - 2003 to 2017



	January	February	March	April	May	June	July	August	September	October	November	December
2003	\$1,471,061	1,497,398	1,787,877	737,255	708,947	979,861	1,215,159	1,207,373	942,596	842,980	770,632	1,833,614
2004	\$1,530,388	1,609,507	1,855,895	793,619	744,456	1,097,619	1,325,813	1,209,657	1,112,747	875,854	839,590	2,083,871
2005	\$1,617,152	1,735,422	1,968,239	803,359	815,925	1,223,263	1,457,514	1,299,302	1,201,406	962,731	961,551	2,369,566
2006	\$1,811,413	1,861,558	2,322,443	908,584	941,595	1,377,269	1,614,695	1,436,115	1,307,845	1,139,648	1,084,858	2,386,275
2007	\$2,044,667	2,032,045	2,450,620	1,016,601	1,015,101	1,510,706	1,676,821	1,567,534	1,470,714	1,281,546	1,115,446	2,561,705
2008	\$2,166,093	2,180,532	2,570,347	999,144	1,077,244	1,500,946	1,728,329	1,612,531	1,440,373	1,244,023	1,030,654	2,354,077
2009	\$1,900,660	1,767,622	2,022,205	960,333	908,729	1,203,304	1,419,472	1,301,838	1,176,374	967,698	951,706	2,130,350
2010	\$1,813,155	1,743,152	1,942,237	931,573	853,085	1,204,077	1,462,648	1,300,401	1,235,126	967,688	984,189	2,232,403
2011	\$1,761,158	1,716,963	2,150,278	907,893	872,240	1,304,067	1,528,476	1,411,387	1,335,629	1,008,207	1,052,340	2,349,674
2012	\$1,761,959	1,770,126	2,125,388	951,540	941,877	1,383,426	1,559,801	1,461,392	1,328,744	1,048,827	1,049,425	2,249,514
2013	\$1,919,887	1,916,581	2,242,412	955,334	1,013,860	1,454,259	1,662,137	1,584,036	1,408,659	1,117,302	1,120,256	2,528,232
2014	\$2,073,559	1,988,146	2,421,883	1,035,139	1,082,596	1,595,084	1,896,956	1,745,617	1,535,341	1,250,229	1,249,980	2,761,147
2015	\$2,204,914	2,188,460	2,498,079	1,134,521	1,111,391	1,700,528	2,040,035	1,793,173	1,649,280	1,308,089	1,254,026	3,036,247
2016	\$2,306,434	2,393,851	2,671,877	1,141,424	1,224,092	1,872,237	2,204,605	1,918,639	1,856,102	1,381,059	1,371,347	3,097,986
2017	\$2,431,128	2,374,179	2,804,650	1,218,277	1,280,438	1,950,683	2,261,229	1,938,440	1,927,728	1,492,527	1,445,961	

Sales Tax Revenue by Year 1997- 2017



Totals by Year	
1997	\$ 10,672,320
1998	\$ 11,559,068
1999	\$ 12,218,807
2000	\$ 13,304,983
2001	\$ 13,921,749
2002	\$ 13,841,283
2003	\$ 13,994,753
2004	\$ 15,079,016
2005	\$ 16,415,430
2006	\$ 18,192,298
2007	\$ 19,743,507
2008	\$ 19,904,293
2009	\$ 16,710,291
2010	\$ 16,669,735
2011	\$ 17,398,312
2012	\$ 17,632,019
2013	\$ 18,922,955
2014	\$ 20,635,678
2015	\$ 21,918,746
2016	\$ 23,439,652
* 2017	\$ 21,125,239

* 2017 total is year-to-date through November