



October 2017 Taxes, Remitted in November 2017 Sales, Use, and Accommodation Tax Report

PRELIMINARY- SUBJECT TO CHANGE

This City of Steamboat Springs Sales, Use, and Accommodation Tax Report examines tax collections for the month of October 2017, which were remitted to the City in November 2017.

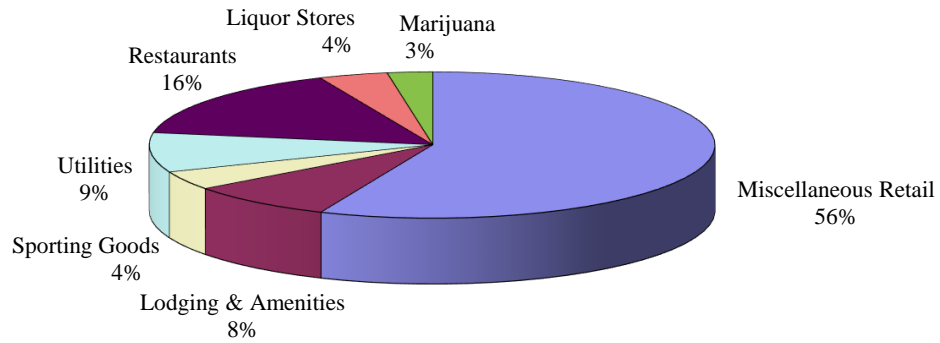
Sales Tax

October 2017 sales tax collections increased by 5.08% compared to October 2016.
Year-to-date total sales tax collections are 3.46% higher than those of 2016 year-to-date.

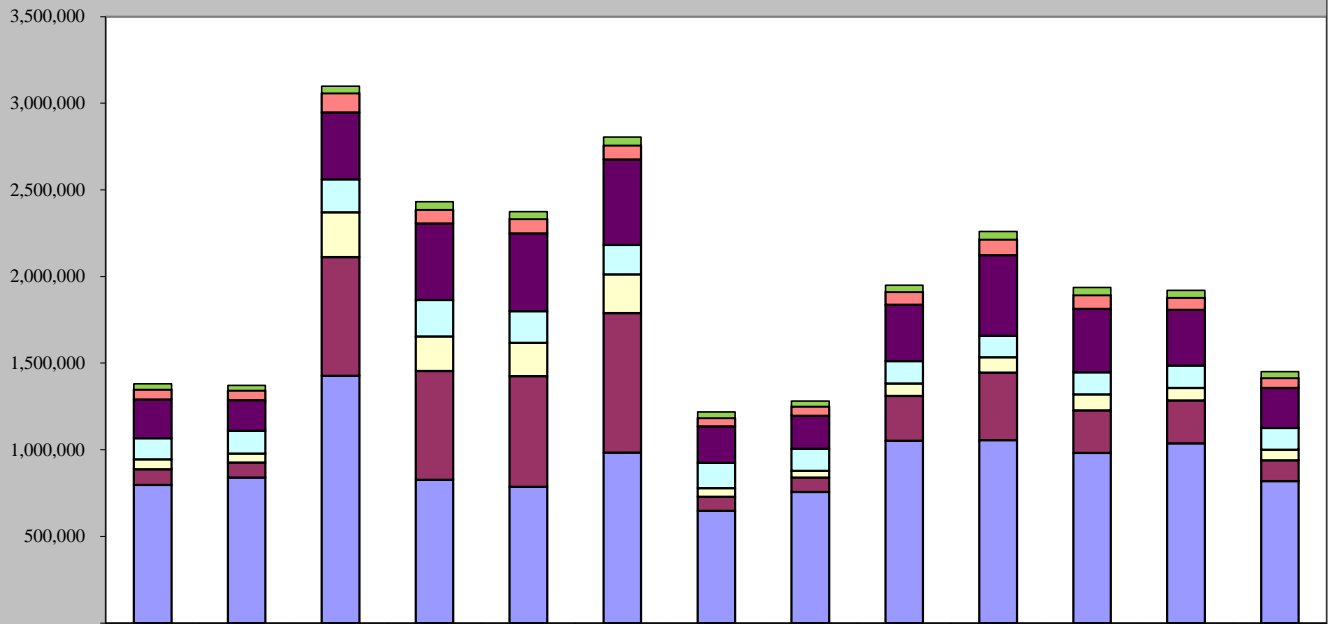
Sales Tax October 2017	Sales Tax October 2016	% increase/decrease over last October
\$1,451,088	\$1,380,888	5.08%

Sales Tax 2017 YTD	Sales Tax 2016 YTD	% increase/decrease over prior Year to Date
\$19,625,980	\$18,969,886	3.46%

October 2017 Sales Categories



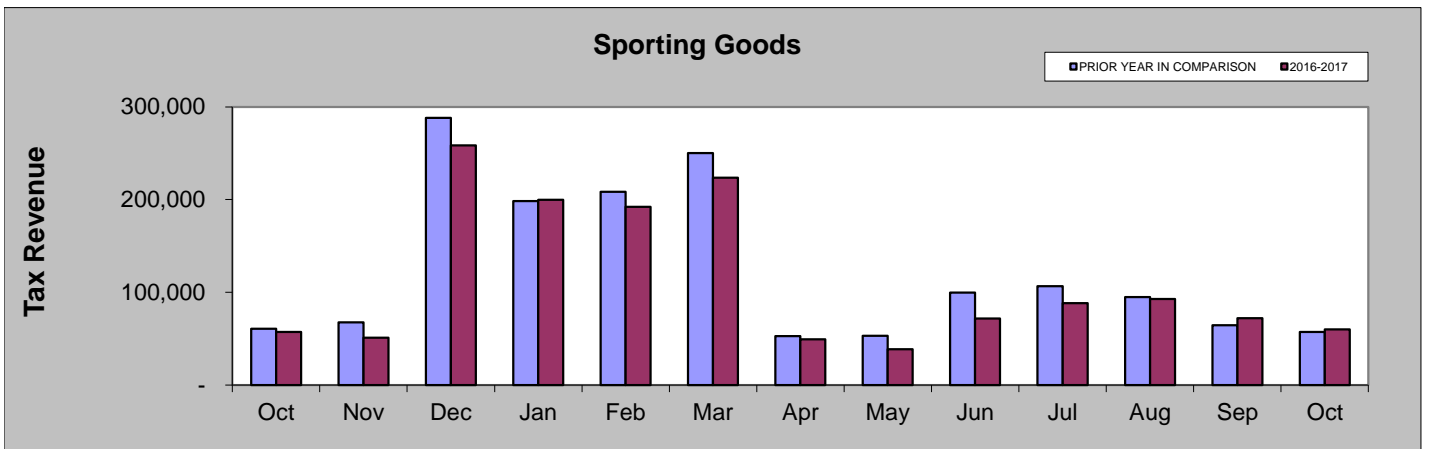
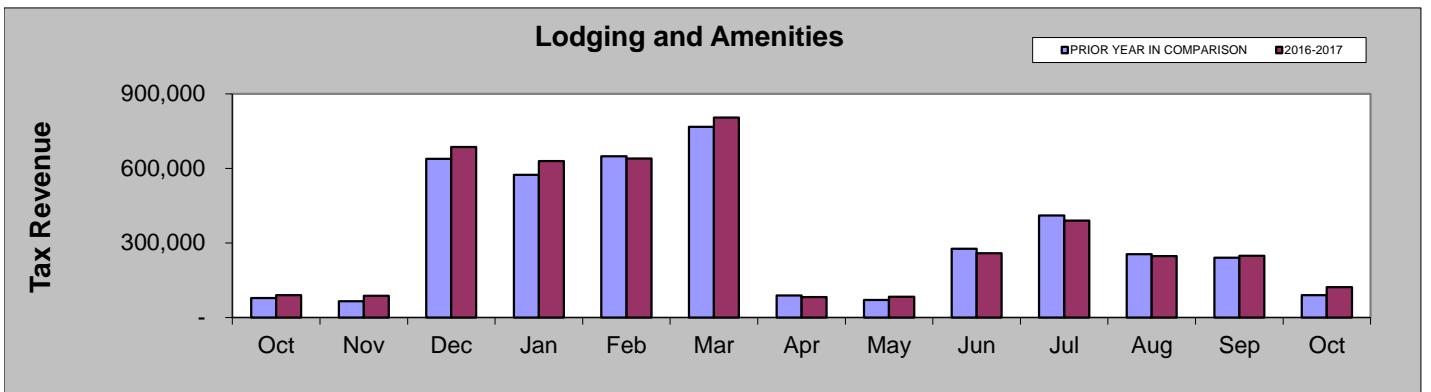
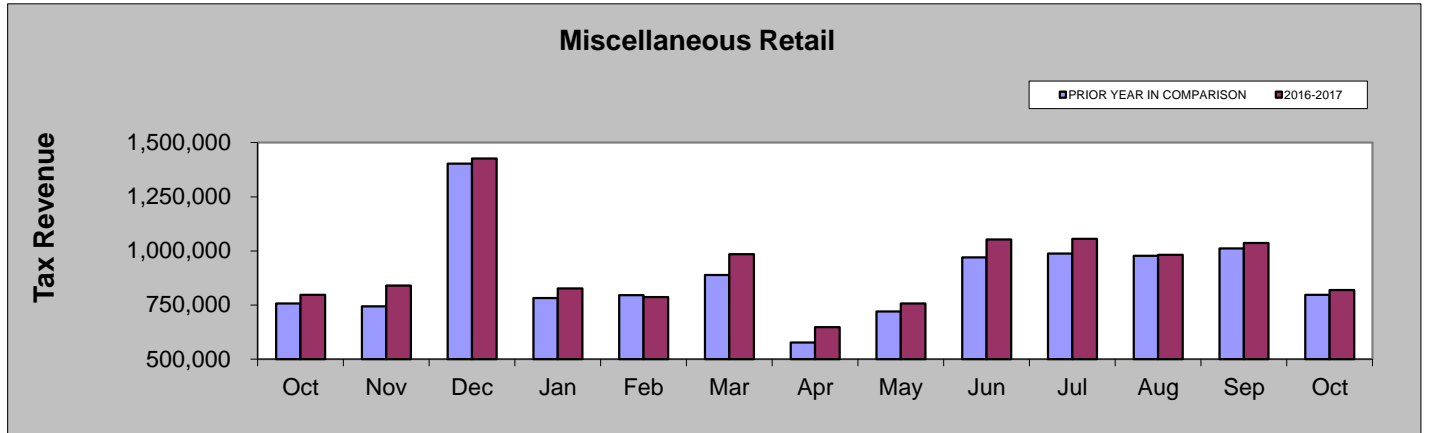
October 2016 - October 2017

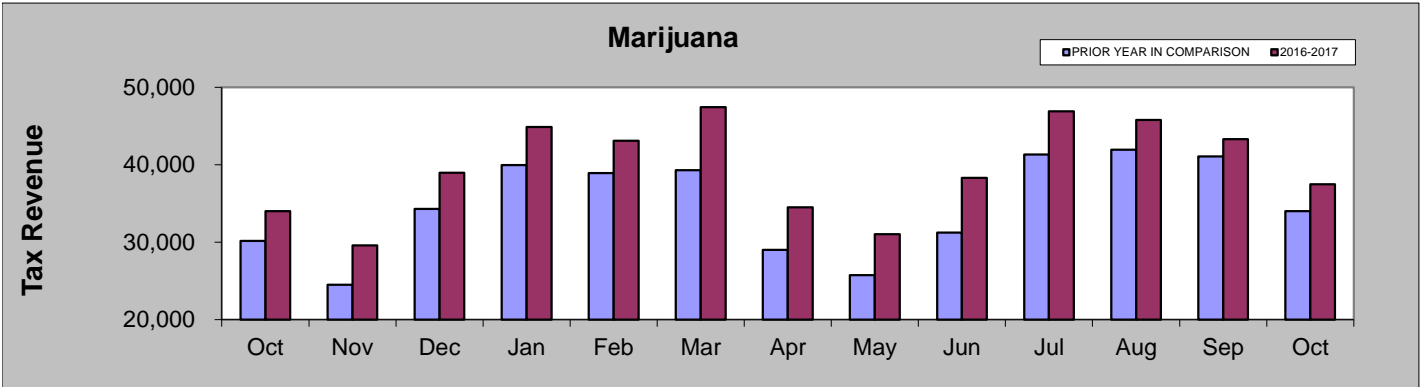
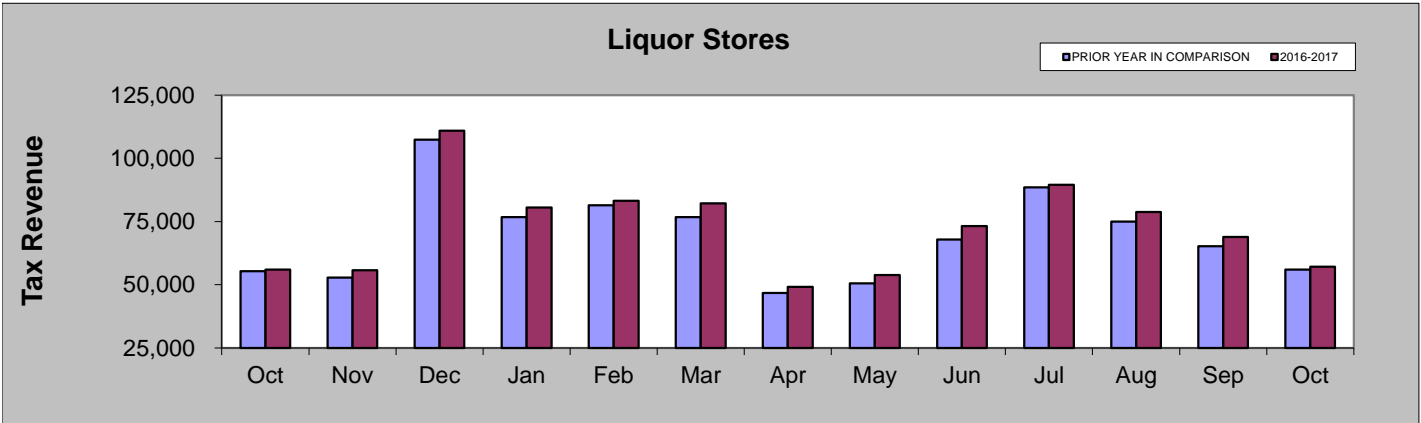
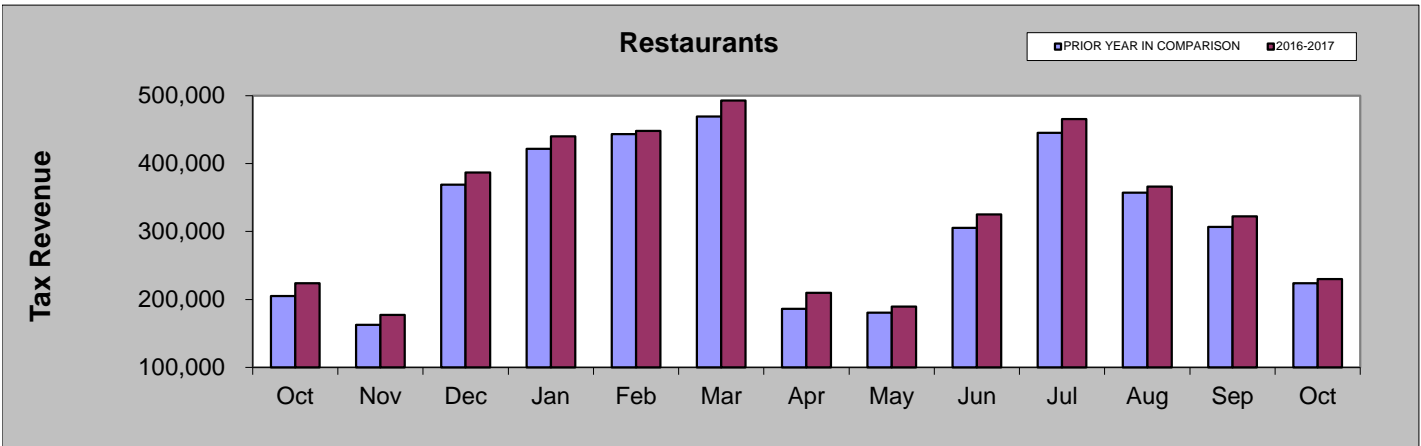
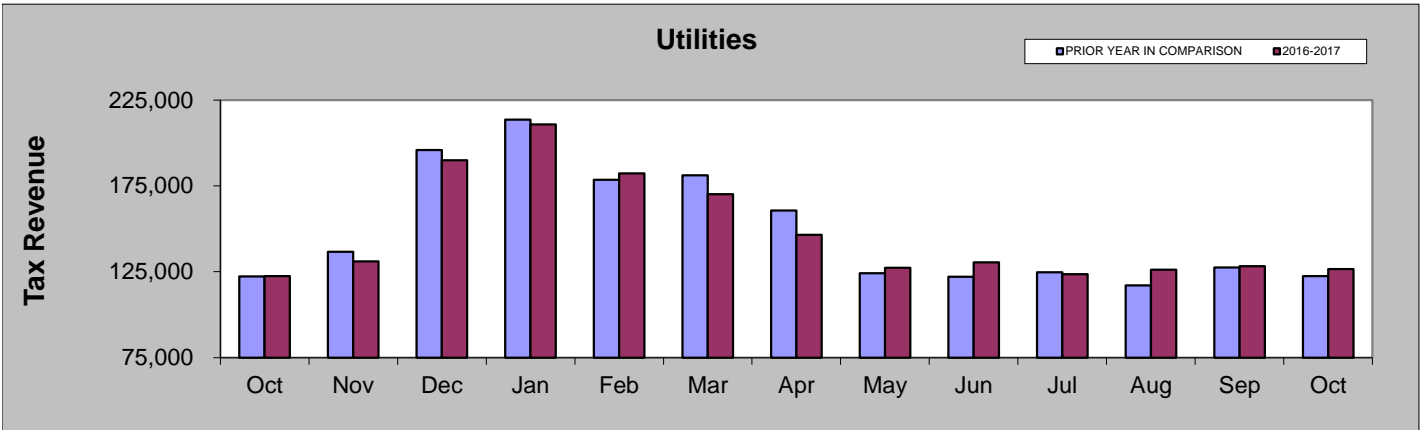


	Oct-16	Nov-16	Dec-16	Jan-17	Feb-17	Mar-17	Apr-17	May-17	Jun-17	Jul-17	Aug-17	Sep-17	Oct-17
Marijuana	34,015	29,593	38,972	44,878	43,110	47,454	34,510	31,021	38,304	46,910	45,817	43,327	37,495
Liquor Stores	56,043	55,694	110,973	80,551	83,172	82,179	49,185	53,847	73,163	89,541	78,774	68,892	57,191
Restaurants	223,958	177,501	386,864	440,284	448,074	492,725	209,980	189,651	325,368	465,411	366,128	322,323	229,816
Utilities	122,420	130,988	190,033	210,900	182,268	170,116	146,540	127,318	130,580	123,596	126,152	128,255	126,553
Sporting Goods	57,190	50,816	258,513	199,765	192,059	223,451	49,228	38,431	71,808	88,270	92,697	71,868	59,986
Lodging & Amenities	89,699	86,915	685,581	628,488	639,285	804,204	81,696	83,054	258,011	389,856	246,546	248,437	121,107
Miscellaneous Retail	797,564	839,839	1,426,688	826,263	786,210	984,251	647,137	757,116	1,052,013	1,056,327	981,132	1,036,986	818,939

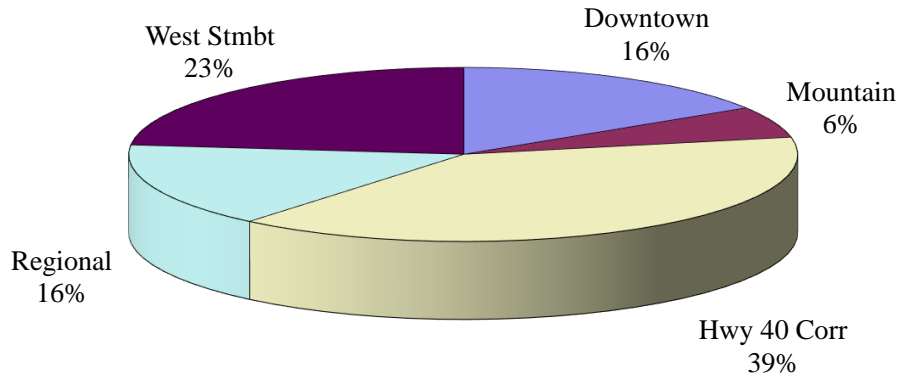
OCTOBER COMPARISON BY CATEGORY

	2017	2016	% change
Miscellaneous Retail	\$818,939	\$797,564	2.68%
Lodging and Amenities	\$121,107	\$89,699	35.02%
Sporting Goods	\$59,986	\$57,190	4.89%
Utilities	\$126,553	\$122,420	3.38%
Restaurants	\$229,816	\$223,958	2.62%
Liquor Stores	\$57,191	\$56,043	2.05%
Marijuana	\$37,495	\$34,015	10.23%

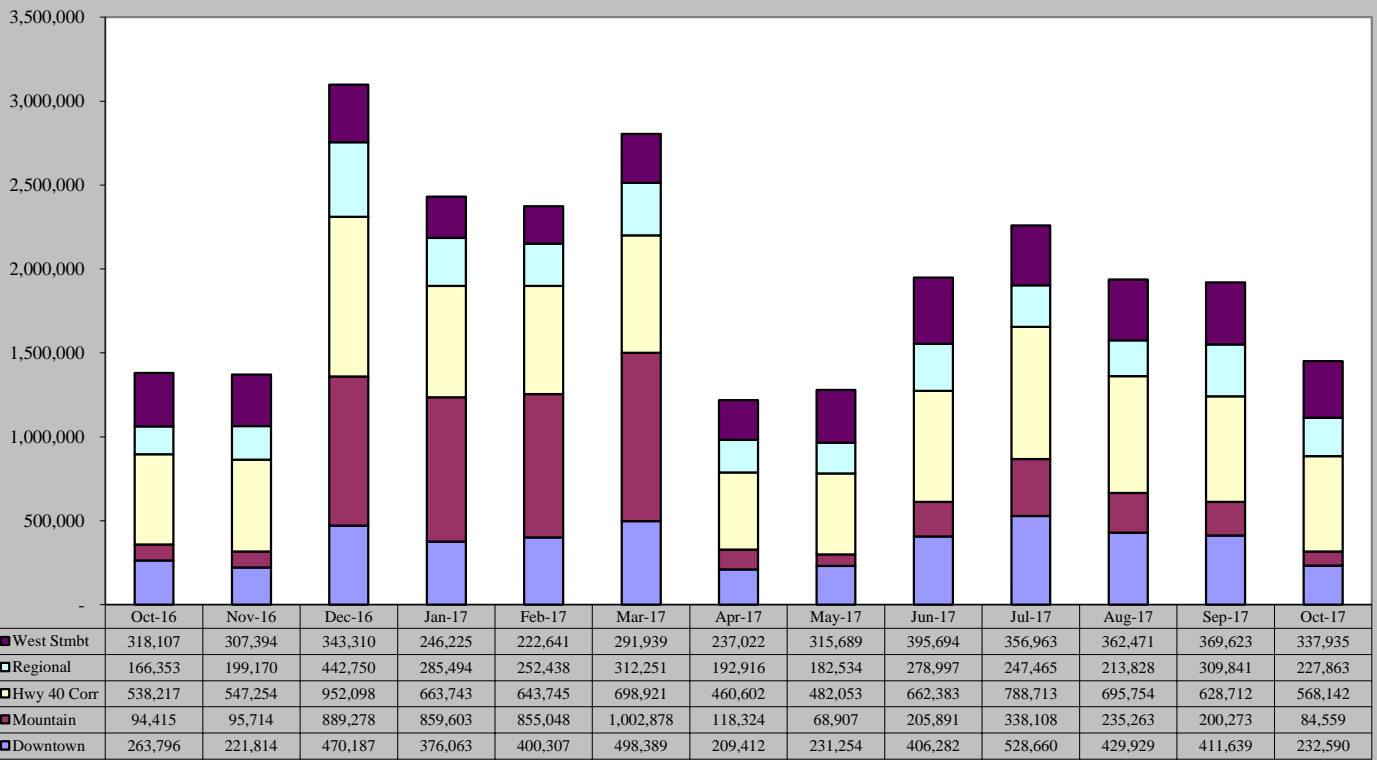




October 2017 Sales Tax By Area

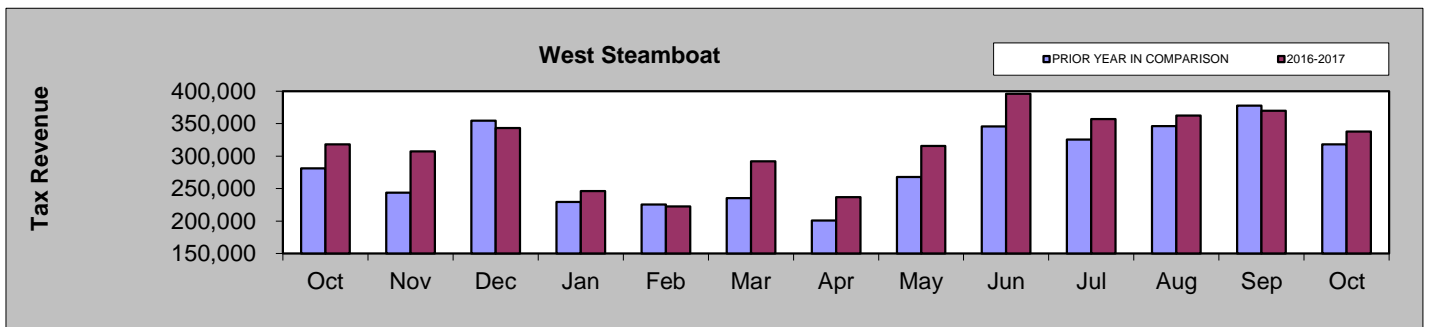
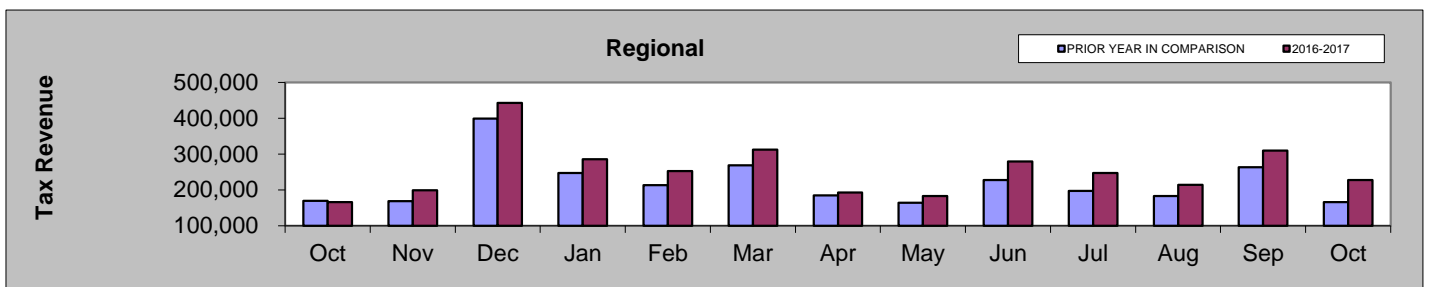
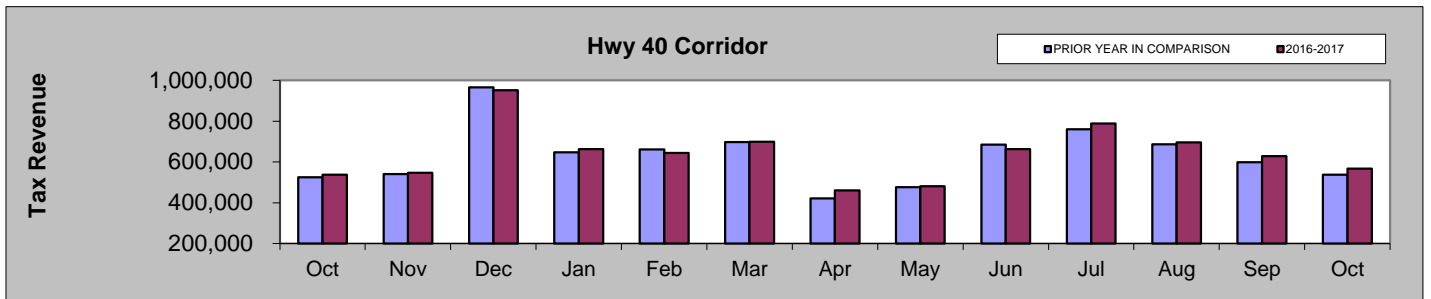
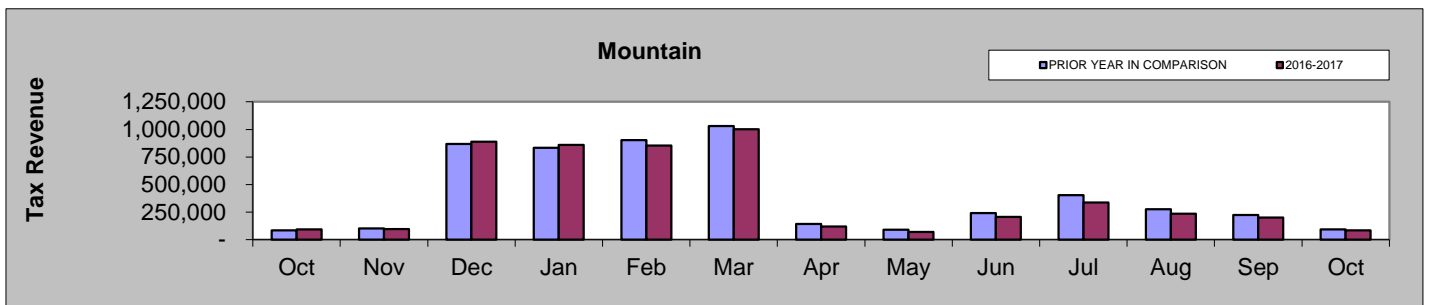
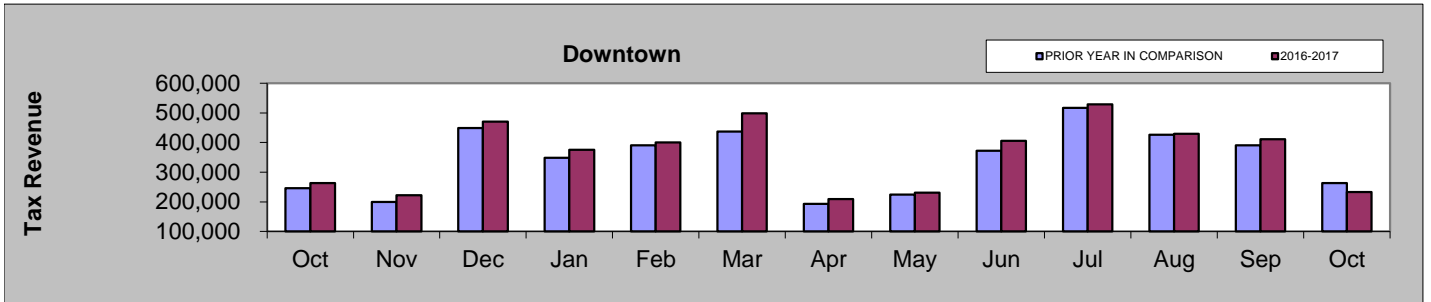


October 2016 - October 2017



OCTOBER COMPARISON BY AREA

Area	2017	2016	% change
Downtown	\$232,590	\$263,796	-11.83%
Mountain	\$84,559	\$94,415	-10.44%
Hwy 40 Corridor	\$568,142	\$538,217	5.56%
Regional	\$227,863	\$166,353	36.98%
West Steamboat	\$337,935	\$318,107	6.23%

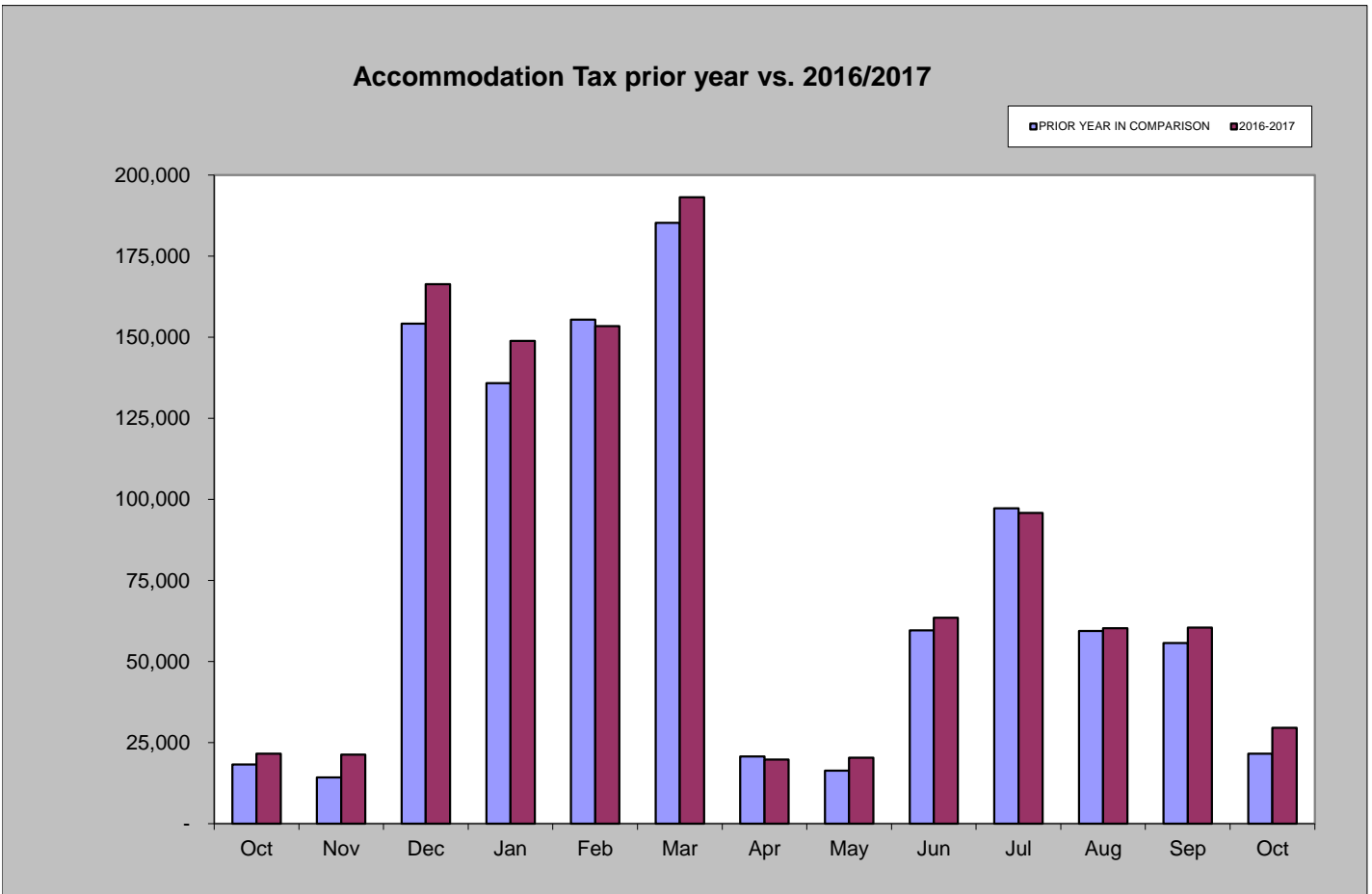


Accommodation Tax

October 2017 accommodation tax collections increased by 37.07% compared to October 2016.
 Year-to-date accommodation tax collections are 4.68% higher than those of 2016 year-to-date.

Accommodation Tax October 2017	Accommodation Tax October 2016	% increase/decrease over last October
\$29,558	\$21,564	37.07%

Accommodation Tax 2017 YTD	Accommodation Tax 2016 YTD	% increase/decrease over prior Year to Date
\$844,913	\$807,106	4.68%



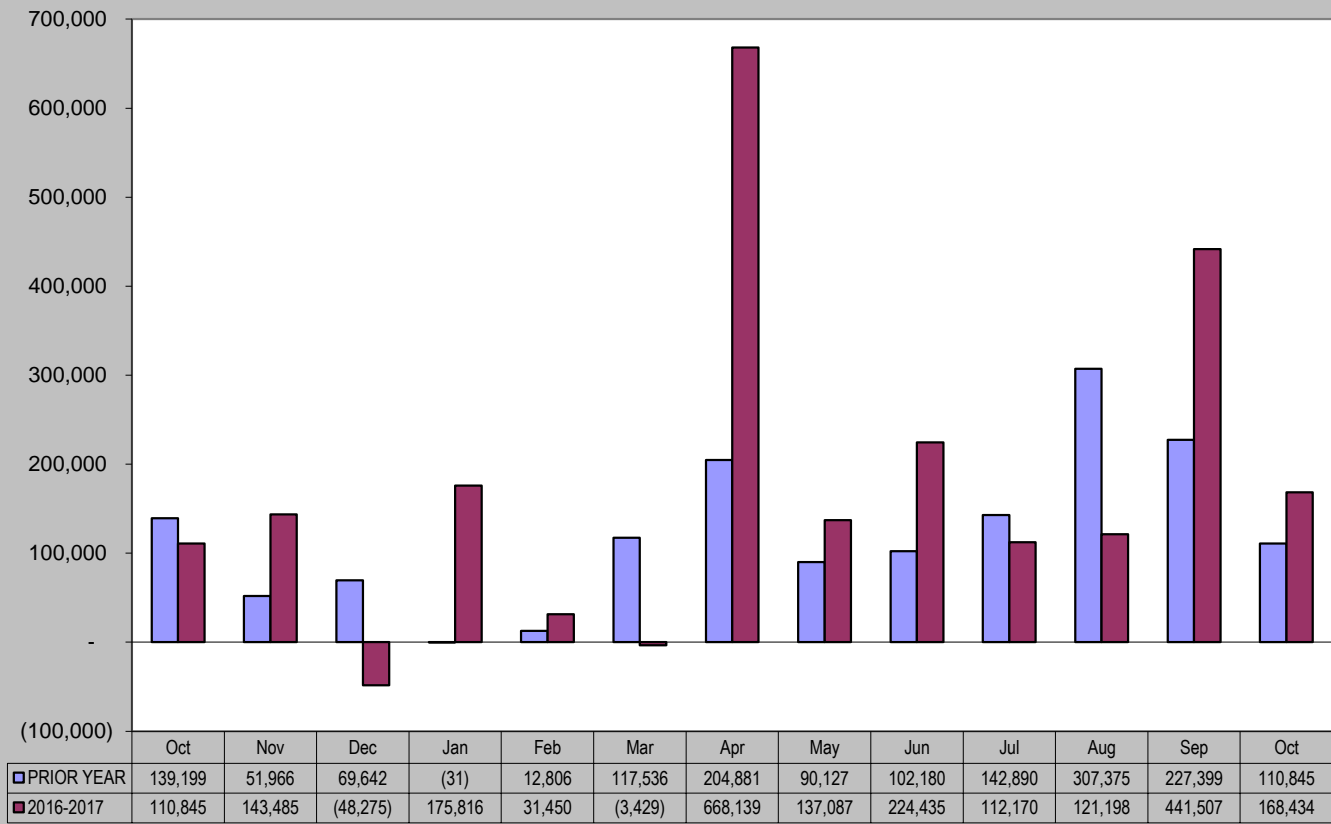
Building Use Tax

October 2017 building use tax collections increased by 52% compared to October 2016.
 Year-to-date building use tax collections are 58% higher than those of 2016 year-to-date.

Building Use Tax October 2017	Building Use Tax October 2016	% increase/decrease over last October
\$168,434	\$110,845	52%

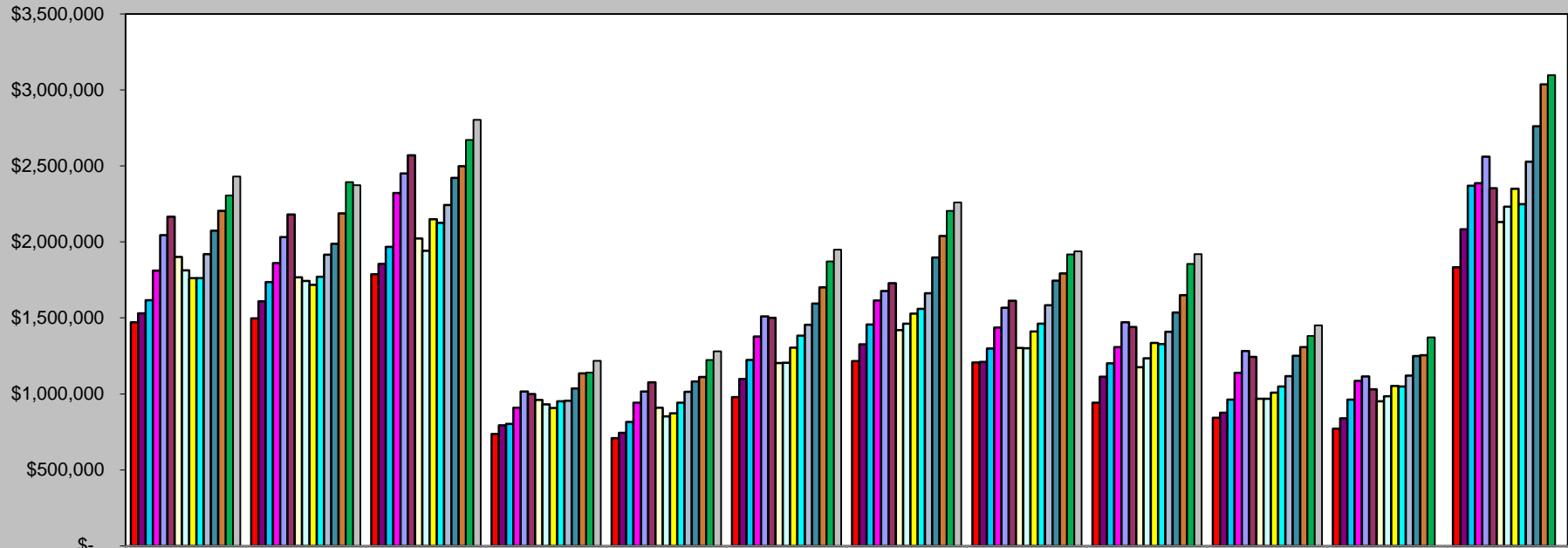
Building Use Tax 2017 YTD	Building Use Tax 2016 YTD	% increase/decrease over prior Year to Date
\$2,076,807	\$1,316,008	58%

Building Use Tax - prior year vs. 2016/2017



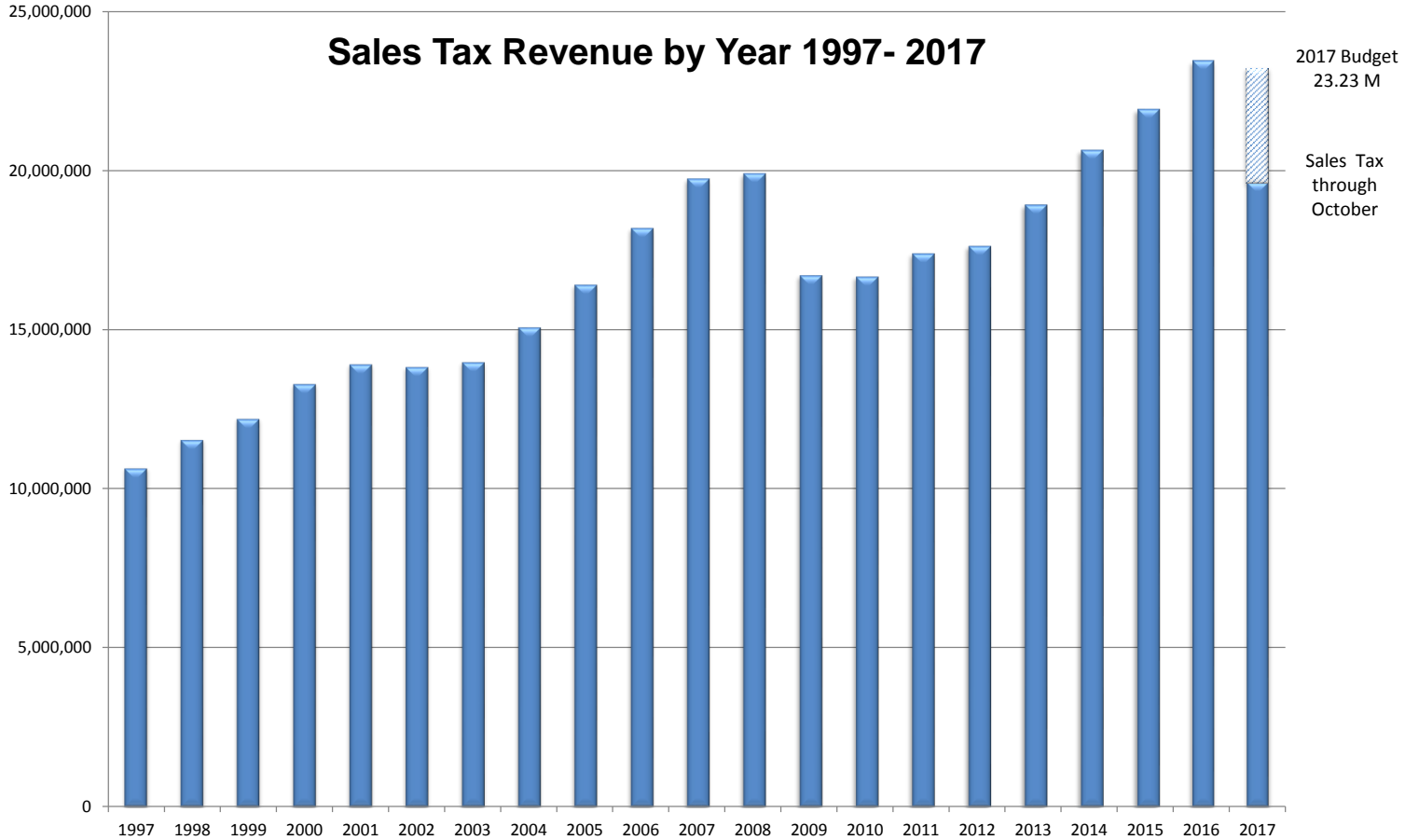
Historical Sales Tax Data

Sales Tax Totals - 2003 to 2017



	January	February	March	April	May	June	July	August	September	October	November	December
■ 2003	\$1,471,061	1,497,398	1,787,877	737,255	708,947	979,861	1,215,159	1,207,373	942,596	842,980	770,632	1,833,614
■ 2004	\$1,530,388	1,609,507	1,855,895	793,619	744,456	1,097,619	1,325,813	1,209,657	1,112,747	875,854	839,590	2,083,871
■ 2005	\$1,617,152	1,735,422	1,968,239	803,359	815,925	1,223,263	1,457,514	1,299,302	1,201,406	962,731	961,551	2,369,566
■ 2006	\$1,811,413	1,861,558	2,322,443	908,584	941,595	1,377,269	1,614,695	1,436,115	1,307,845	1,139,648	1,084,858	2,386,275
■ 2007	\$2,044,667	2,032,045	2,450,620	1,016,601	1,015,101	1,510,706	1,676,821	1,567,534	1,470,714	1,281,546	1,115,446	2,561,705
■ 2008	\$2,166,093	2,180,532	2,570,347	999,144	1,077,244	1,500,946	1,728,329	1,612,531	1,440,373	1,244,023	1,030,654	2,354,077
■ 2009	\$1,900,660	1,767,622	2,022,205	960,333	908,729	1,203,304	1,419,472	1,301,838	1,176,374	967,698	951,706	2,130,350
■ 2010	\$1,813,155	1,743,152	1,942,237	931,573	853,085	1,204,077	1,462,648	1,300,401	1,235,126	967,688	984,189	2,232,403
■ 2011	\$1,761,158	1,716,963	2,150,278	907,893	872,240	1,304,067	1,528,476	1,411,387	1,335,629	1,008,207	1,052,340	2,349,674
■ 2012	\$1,761,959	1,770,126	2,125,388	951,540	941,877	1,383,426	1,559,801	1,461,392	1,328,744	1,048,827	1,049,425	2,249,514
■ 2013	\$1,919,887	1,916,581	2,242,412	955,334	1,013,860	1,454,259	1,662,137	1,584,036	1,408,659	1,117,302	1,120,256	2,528,232
■ 2014	\$2,073,559	1,988,146	2,421,883	1,035,139	1,082,596	1,595,084	1,896,956	1,745,617	1,535,341	1,250,229	1,249,980	2,761,147
■ 2015	\$2,204,914	2,188,460	2,498,079	1,134,521	1,111,391	1,700,528	2,040,035	1,793,173	1,649,280	1,308,089	1,254,026	3,036,247
■ 2016	\$2,306,434	2,393,851	2,671,877	1,141,424	1,224,092	1,872,237	2,204,605	1,918,639	1,855,839	1,380,888	1,371,347	3,097,624
■ 2017	\$2,431,128	2,374,179	2,804,379	1,218,277	1,280,438	1,949,247	2,259,910	1,937,246	1,920,089	1,451,088		

Sales Tax Revenue by Year 1997- 2017



Totals by Year	
1997	\$ 10,672,320
1998	\$ 11,559,068
1999	\$ 12,218,807
2000	\$ 13,304,983
2001	\$ 13,921,749
2002	\$ 13,841,283
2003	\$ 13,994,753
2004	\$ 15,079,016
2005	\$ 16,415,430
2006	\$ 18,192,298
2007	\$ 19,743,507
2008	\$ 19,904,293
2009	\$ 16,710,291
2010	\$ 16,669,735
2011	\$ 17,398,312
2012	\$ 17,632,019
2013	\$ 18,922,955
2014	\$ 20,635,678
2015	\$ 21,918,746
2016	\$ 23,438,857
* 2017	\$ 19,625,980

* 2017 total is year-to-date through October