



July 2017 Taxes, Remitted in August 2017 Sales, Use, and Accommodation Tax Report

This City of Steamboat Springs Sales, Use, and Accommodation Tax Report examines tax collections for the month of July 2017, which were remitted to the City in August 2017.

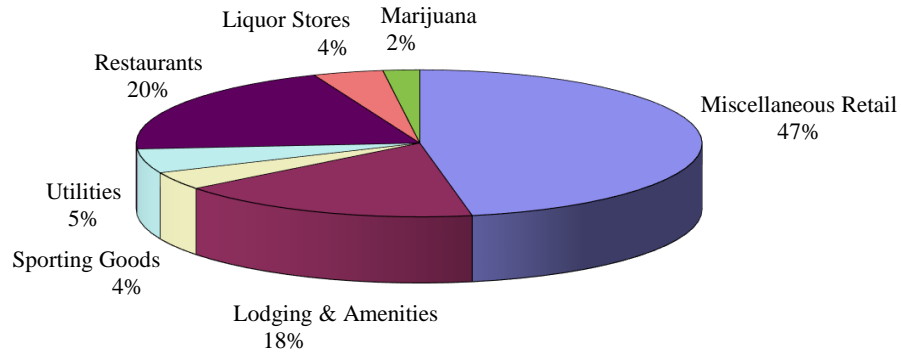
Sales Tax

July 2017 sales tax collections increased by 1.67% compared to July 2016.
Year-to-date total sales tax collections are 3.45% higher than those of 2016 year-to-date.

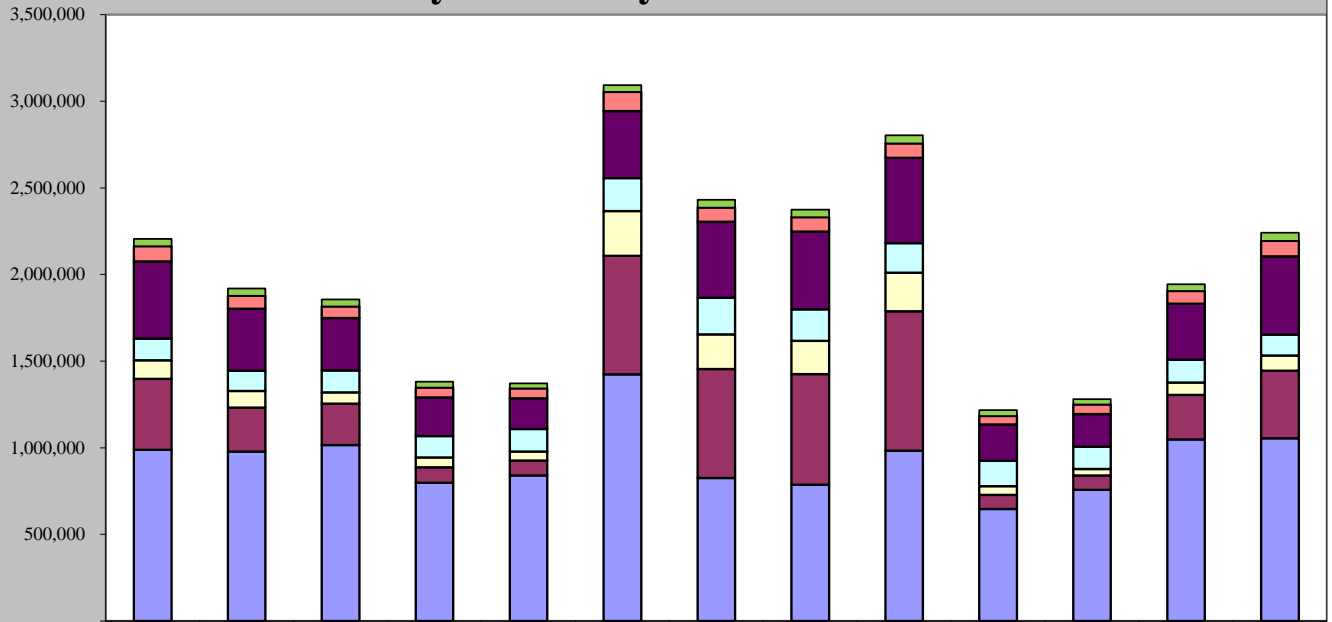
Sales Tax July 2017	Sales Tax July 2016	% increase/decrease over last July
\$2,241,406	\$2,204,605	1.67%

Sales Tax 2017 YTD	Sales Tax 2016 YTD	% increase/decrease over prior Year to Date
\$14,291,141	\$13,814,520	3.45%

July 2017 Sales Categories



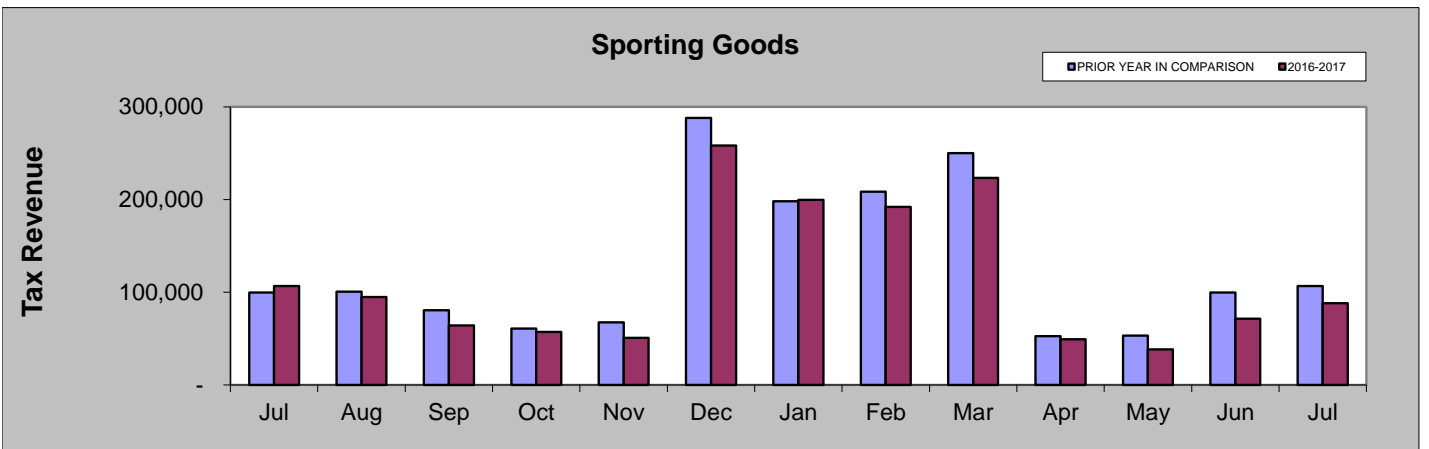
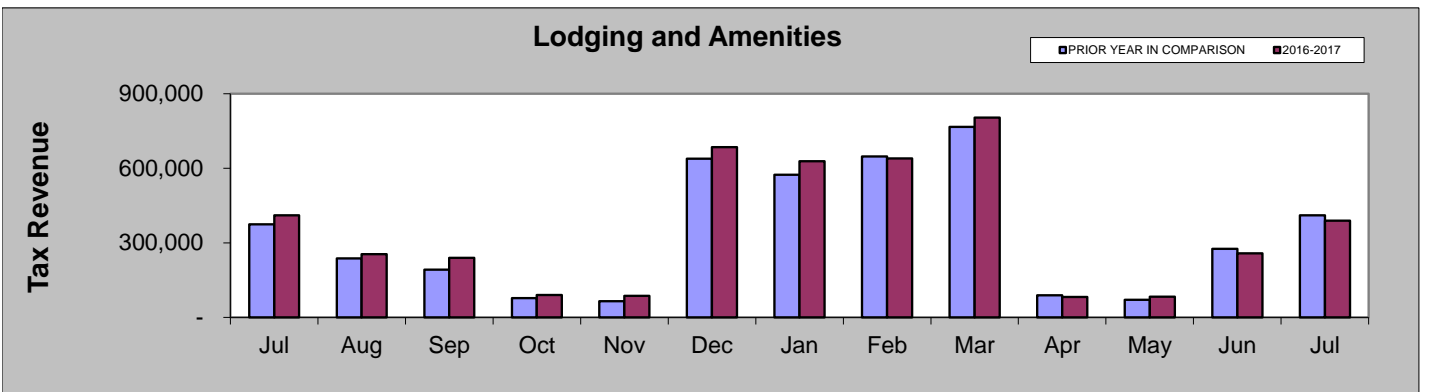
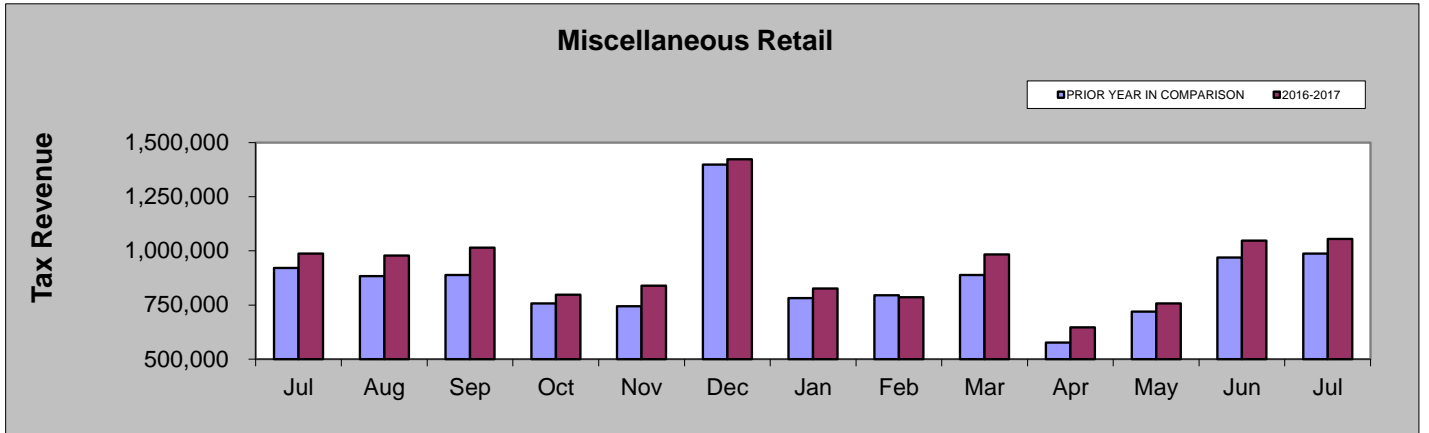
July 2016 - July 2017

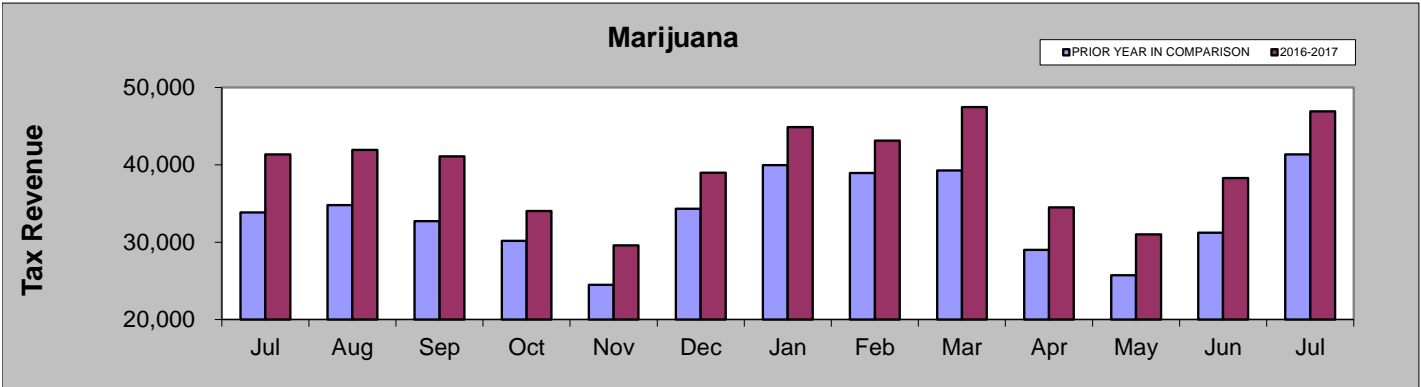
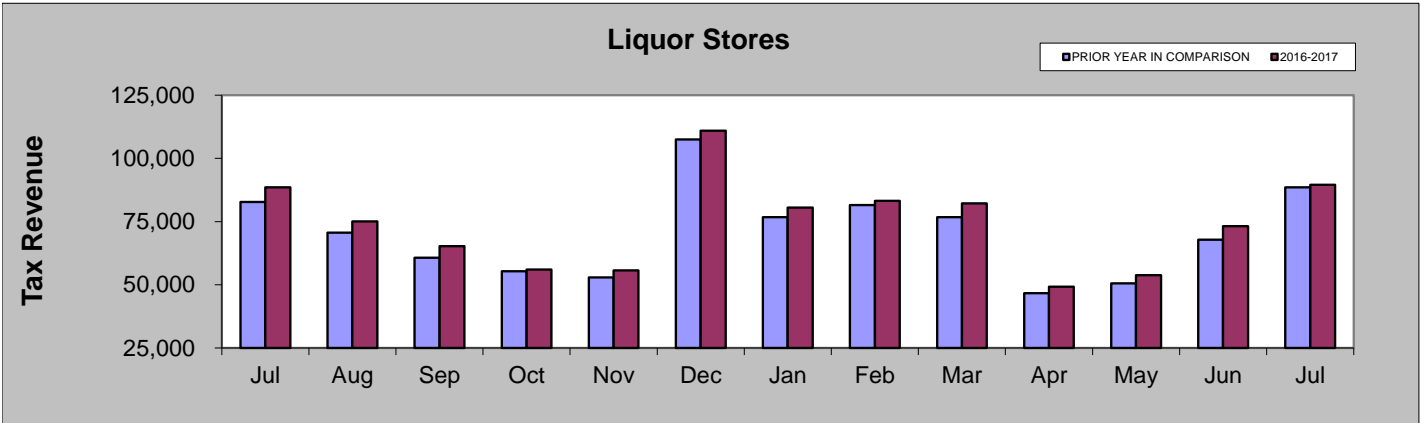
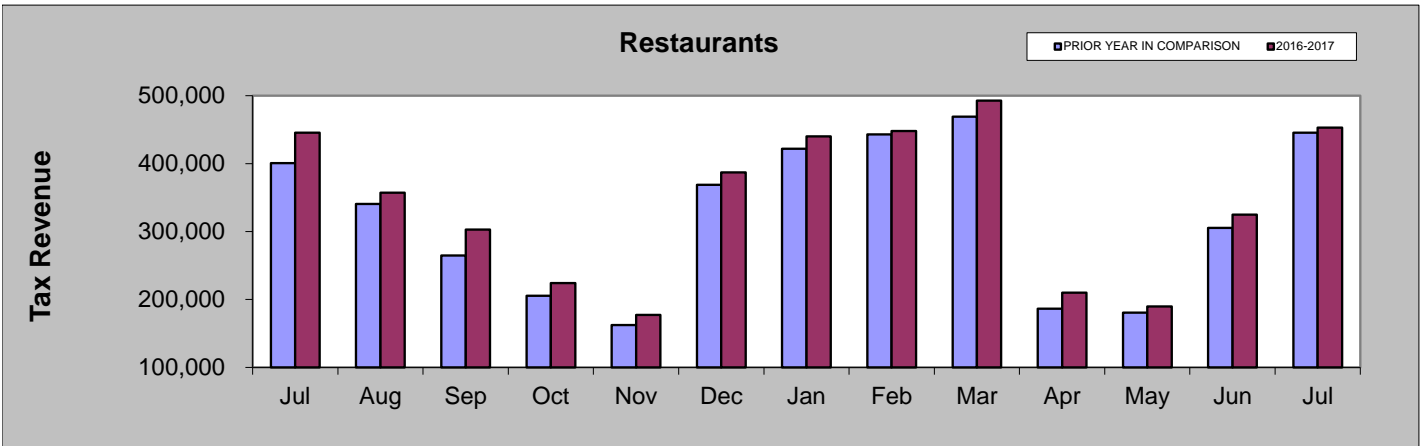
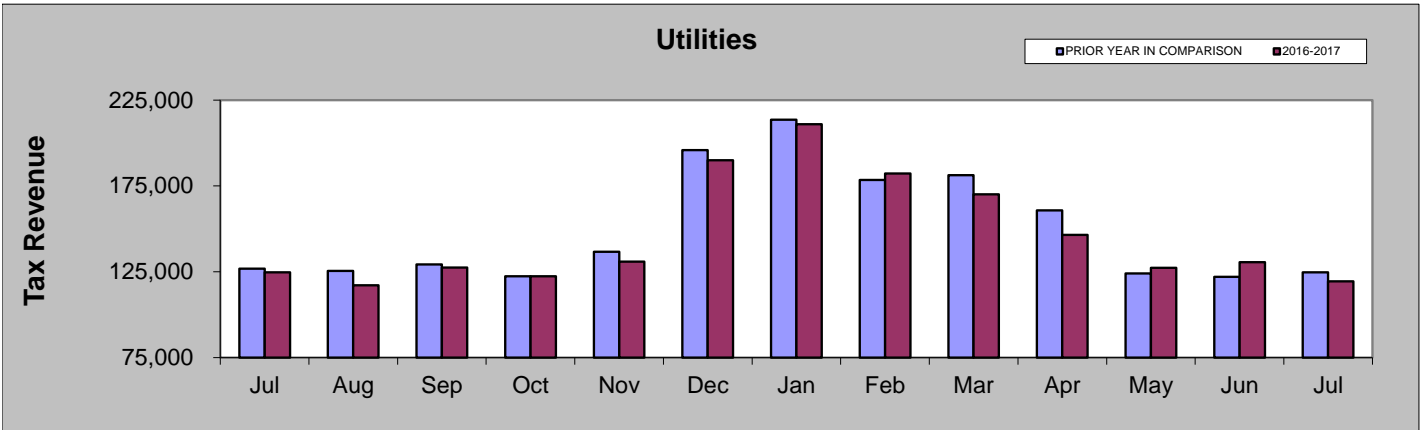


	Jul-16	Aug-16	Sep-16	Oct-16	Nov-16	Dec-16	Jan-17	Feb-17	Mar-17	Apr-17	May-17	Jun-17	Jul-17
Marijuana	41,330	41,945	41,094	34,015	29,593	38,972	44,878	43,110	47,454	34,510	31,021	38,304	46,910
Liquor Stores	88,604	75,025	65,278	56,043	55,694	110,973	80,551	83,172	82,179	49,185	53,847	73,163	89,541
Restaurants	445,376	357,261	302,787	223,958	177,501	386,864	440,284	448,064	492,592	210,008	189,631	324,864	452,942
Utilities	124,627	117,128	127,444	122,420	130,988	190,033	210,900	182,268	170,116	146,540	127,318	130,580	119,498
Sporting Goods	106,595	94,929	64,172	57,190	50,816	258,385	199,765	192,059	223,242	49,228	38,431	71,507	88,270
Lodging & Amenities	410,342	254,247	239,996	89,699	86,915	684,975	628,488	639,285	803,691	81,696	83,054	257,543	389,637
Miscellaneous Retail	987,732	978,104	1,014,904	797,564	839,839	1,423,150	825,841	786,050	983,891	646,806	756,782	1,047,837	1,054,607

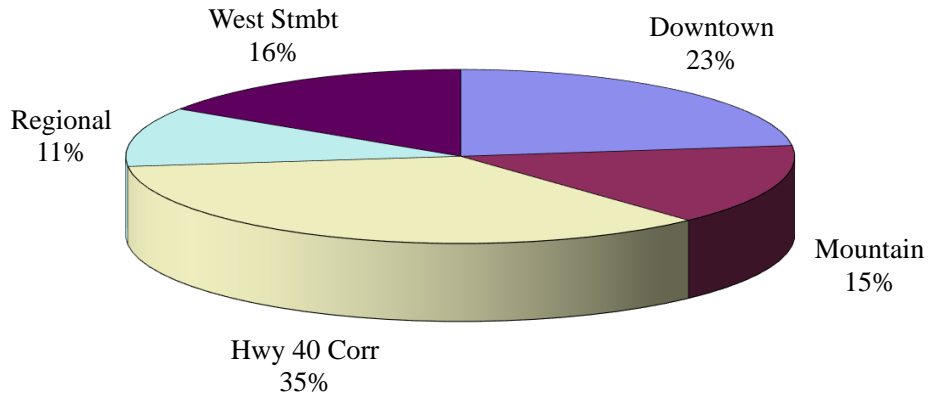
JULY COMPARISON BY CATEGORY

	2017	2016	% change
Miscellaneous Retail	\$1,054,607	\$987,732	6.77%
Lodging and Amenities	\$389,637	\$410,342	-5.05%
Sporting Goods	\$88,270	\$106,595	-17.19%
Utilities	\$119,498	\$124,627	-4.12%
Restaurants	\$452,942	\$445,376	1.70%
Liquor Stores	\$89,541	\$88,604	1.06%
Marijuana	\$46,910	\$41,330	13.50%

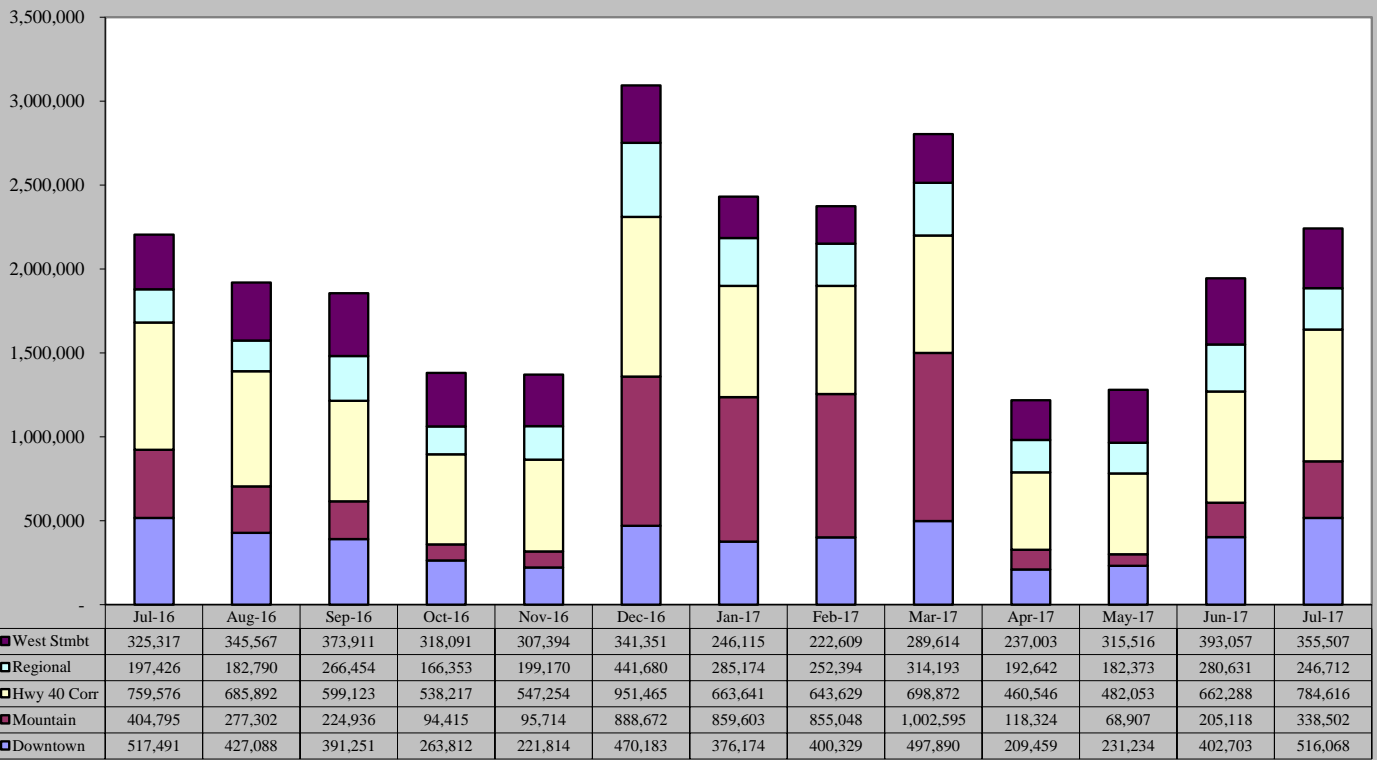




July 2017 Sales Tax By Area

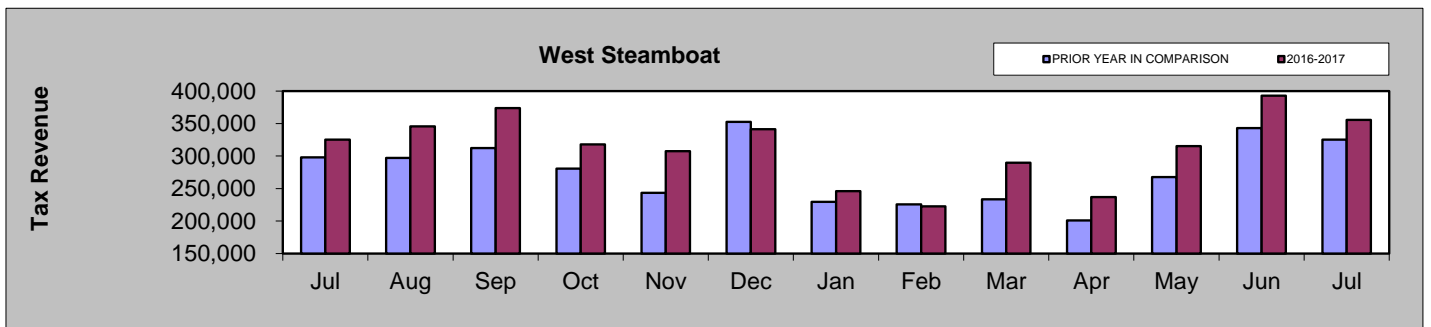
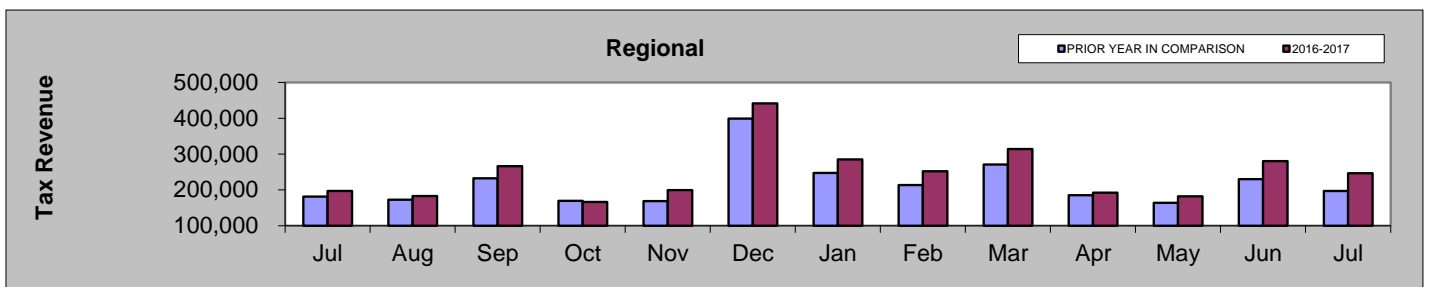
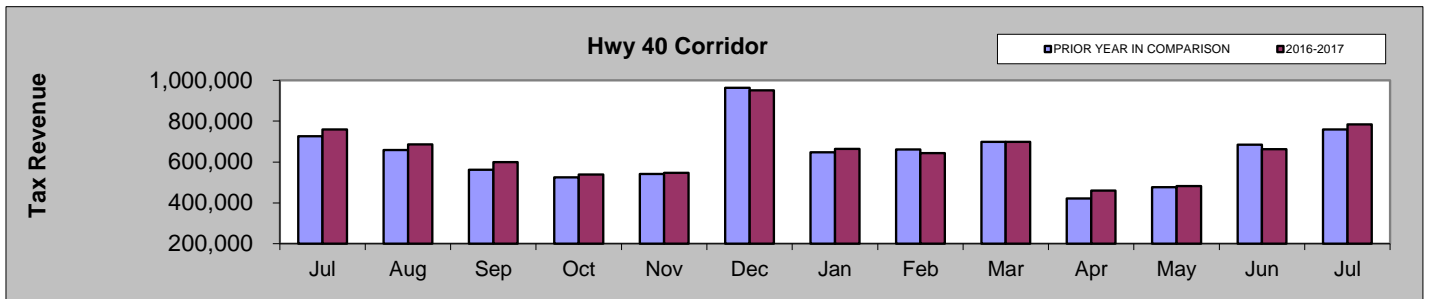
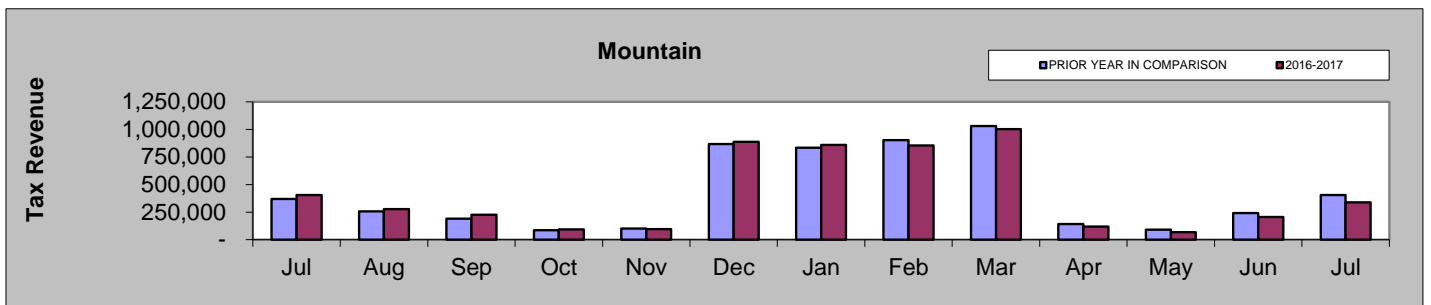
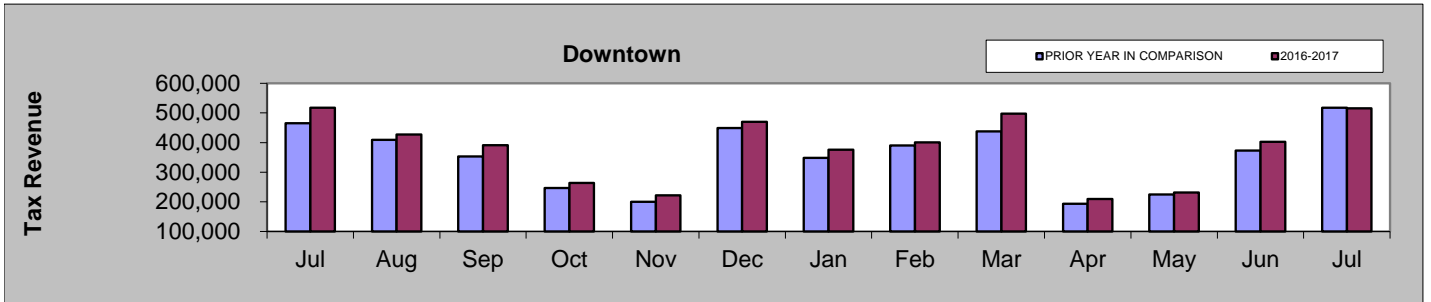


July 2016 - July 2017



JULY COMPARISON BY AREA

Area	2017	2016	% change
Downtown	\$516,068	\$517,491	-0.28%
Mountain	\$338,502	\$404,795	-16.38%
Hwy 40 Corridor	\$784,616	\$759,576	3.30%
Regional	\$246,712	\$197,426	24.96%
West Steamboat	\$355,507	\$325,317	9.28%



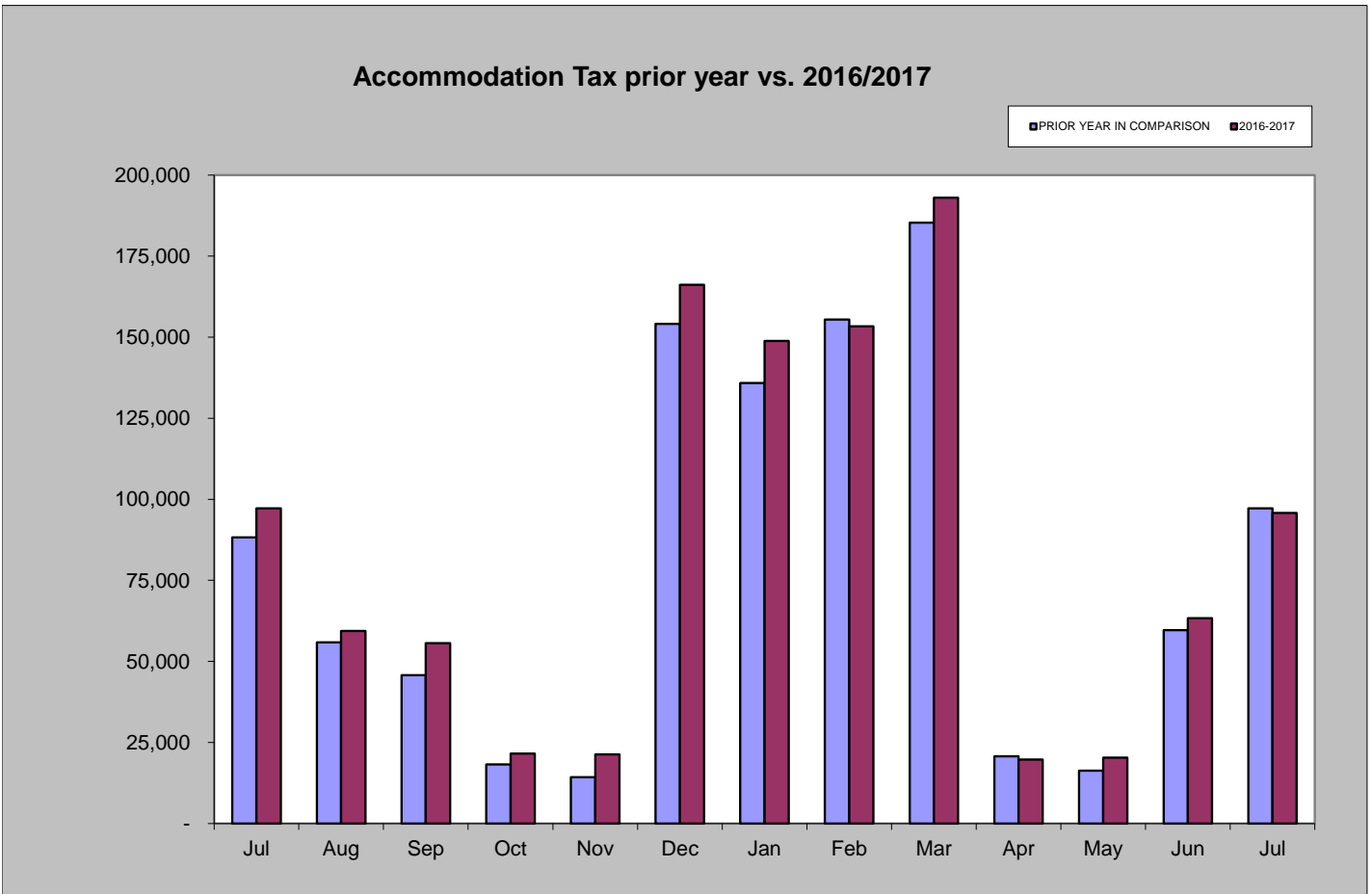
Accommodation Tax

July 2017 accommodation tax collections decreased by 1.50% compared to July 2016.

Year-to-date accommodation tax collections are 3.56% higher than those of 2016 year-to-date.

Accommodation Tax July 2017	Accommodation Tax July 2016	% increase/decrease over last July
\$95,790	\$97,250	-1.50%

Accommodation Tax 2017 YTD	Accommodation Tax 2016 YTD	% increase/decrease over prior Year to Date
\$694,379	\$670,485	3.56%



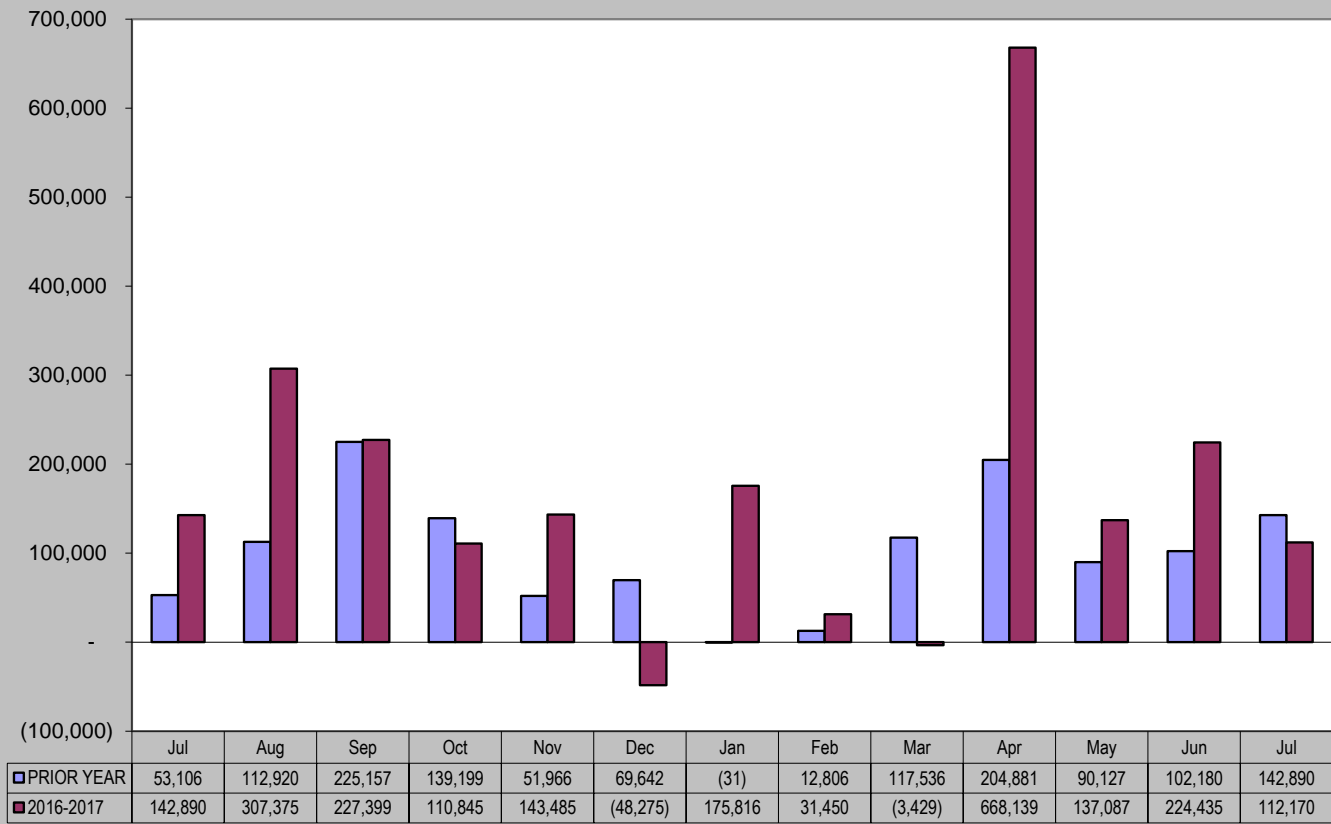
Building Use Tax

July 2017 building use tax collections decreased by 21% compared to July 2016.
 Year-to-date building use tax collections are 101% higher than those of 2016 year-to-date.

Building Use Tax July 2017	Building Use Tax July 2016	% increase/decrease over last July
\$112,170	\$142,890	-21%

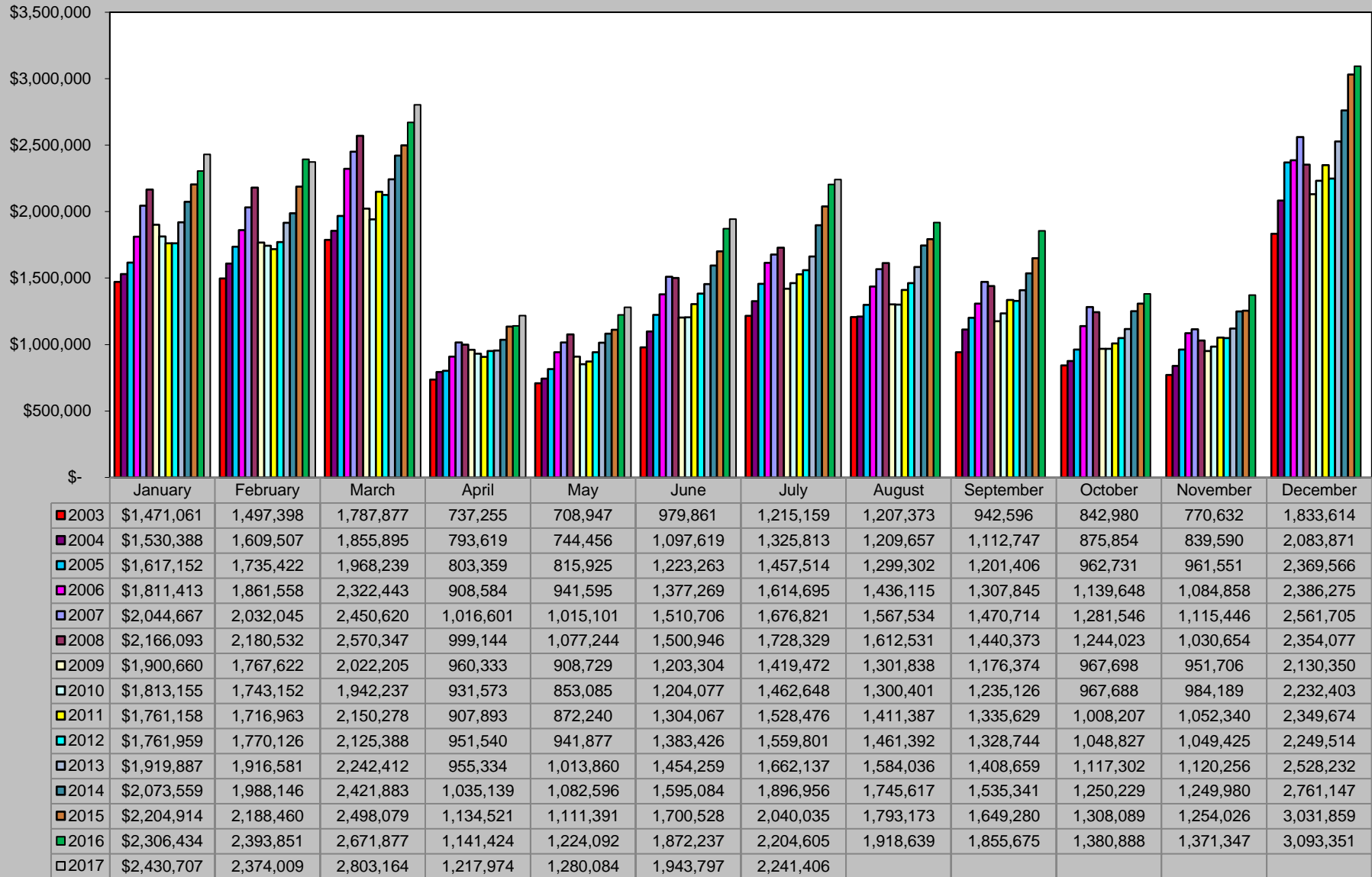
Building Use Tax 2017 YTD	Building Use Tax 2016 YTD	% increase/decrease over prior Year to Date
\$1,345,669	\$670,389	101%

Building Use Tax - prior year vs. 2016/2017

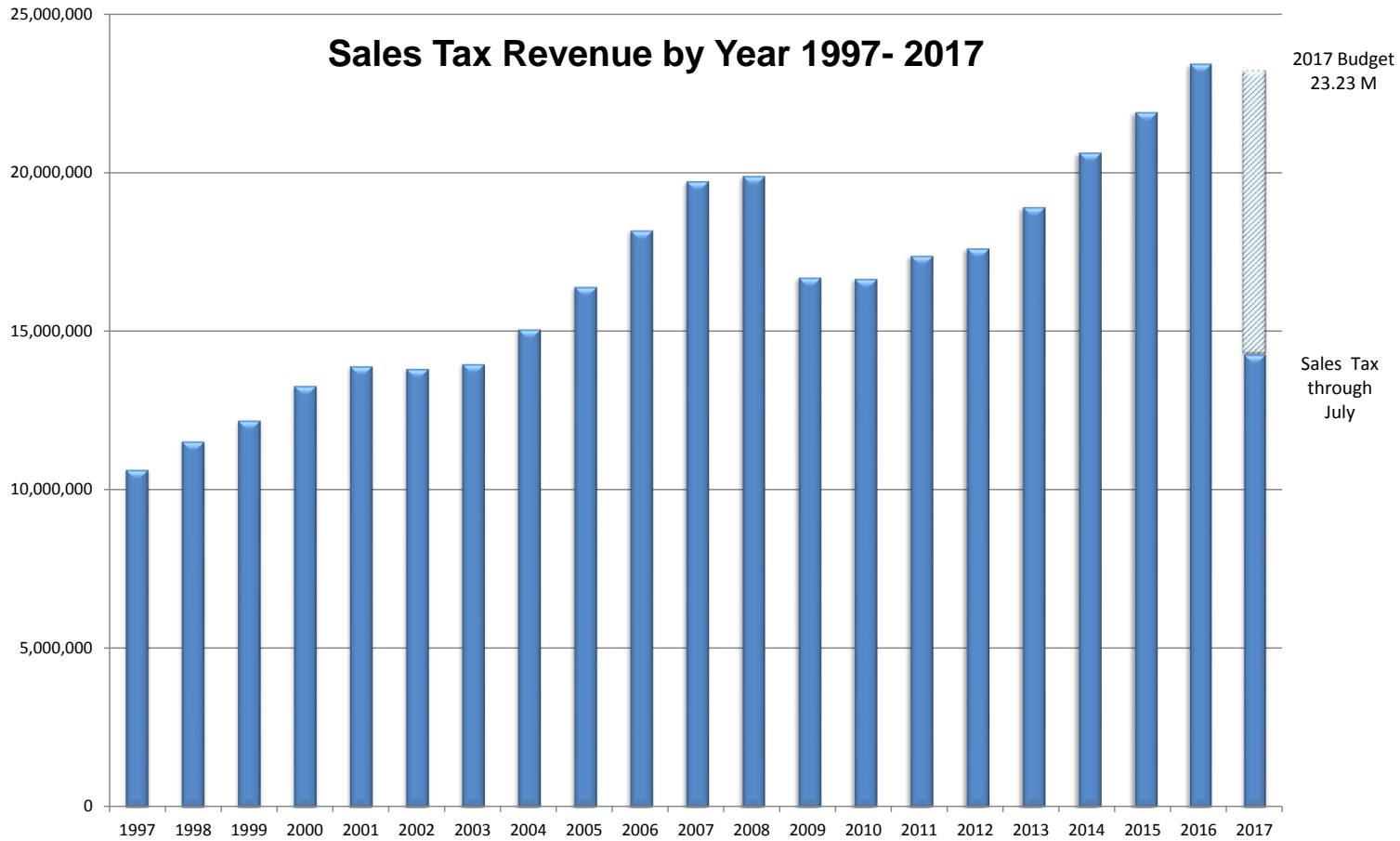


Historical Sales Tax Data

Sales Tax Totals - 2003 to 2017



Sales Tax Revenue by Year 1997- 2017



Totals by Year	
1997	\$ 10,672,320
1998	\$ 11,559,068
1999	\$ 12,218,807
2000	\$ 13,304,983
2001	\$ 13,921,749
2002	\$ 13,841,283
2003	\$ 13,994,753
2004	\$ 15,079,016
2005	\$ 16,415,430
2006	\$ 18,192,298
2007	\$ 19,743,507
2008	\$ 19,904,293
2009	\$ 16,710,291
2010	\$ 16,669,735
2011	\$ 17,398,312
2012	\$ 17,632,019
2013	\$ 18,922,955
2014	\$ 20,635,678
2015	\$ 21,914,358
2016	\$ 23,434,420
* 2017	\$ 14,291,141

* 2017 total is year-to-date through July