



April 2017 Taxes, Remitted in May 2017 Sales, Use, and Accommodation Tax Report

This City of Steamboat Springs Sales, Use, and Accommodation Tax Report examines tax collections for the month of April 2017, which were remitted to the City in May 2017.

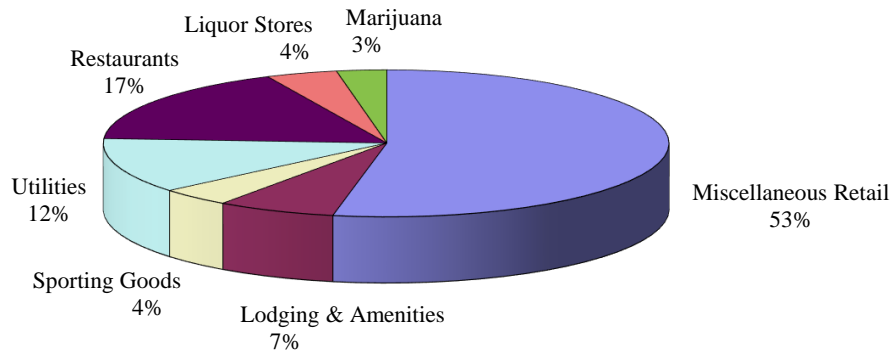
Sales Tax

April 2017 sales tax collections increased by 6.10% compared to April 2016.
Year-to-date total sales tax collections are 3.45% higher than those of 2016 year-to-date.

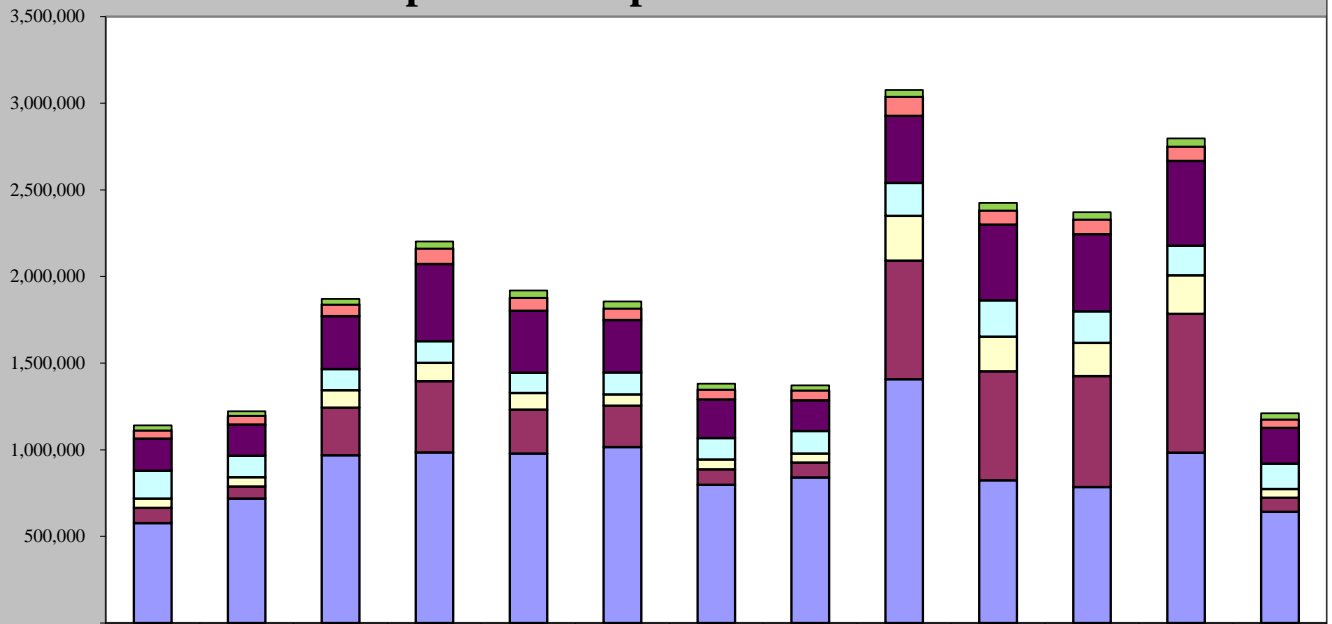
Sales Tax April 2017	Sales Tax April 2016	% increase/decrease over last April
\$1,209,968	\$1,140,445	6.10%

Sales Tax 2017 YTD	Sales Tax 2016 YTD	% increase/decrease over prior Year to Date
\$8,803,431	\$8,510,028	3.45%

April 2017 Sales Categories



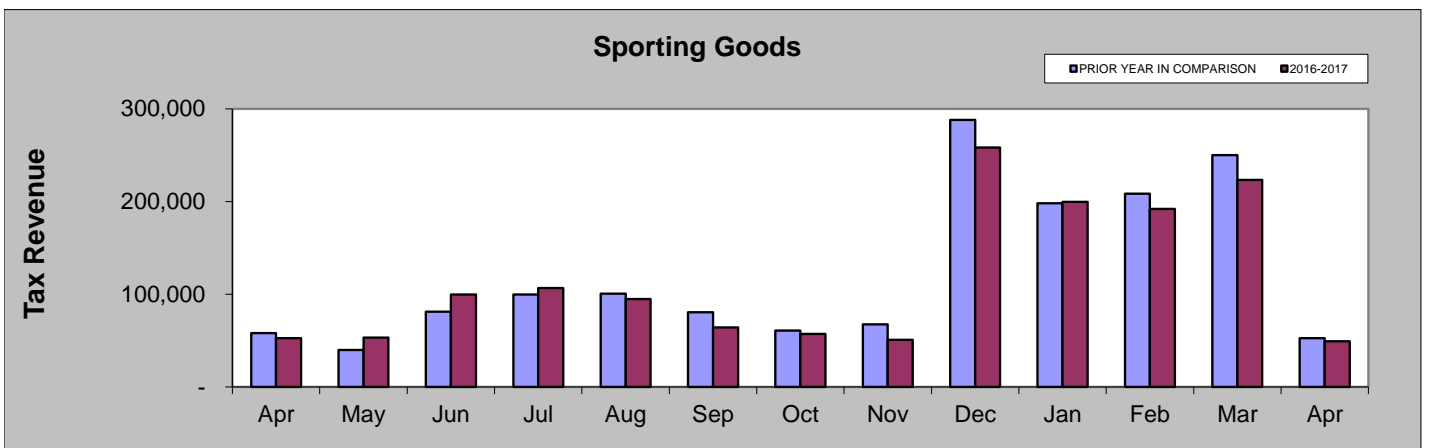
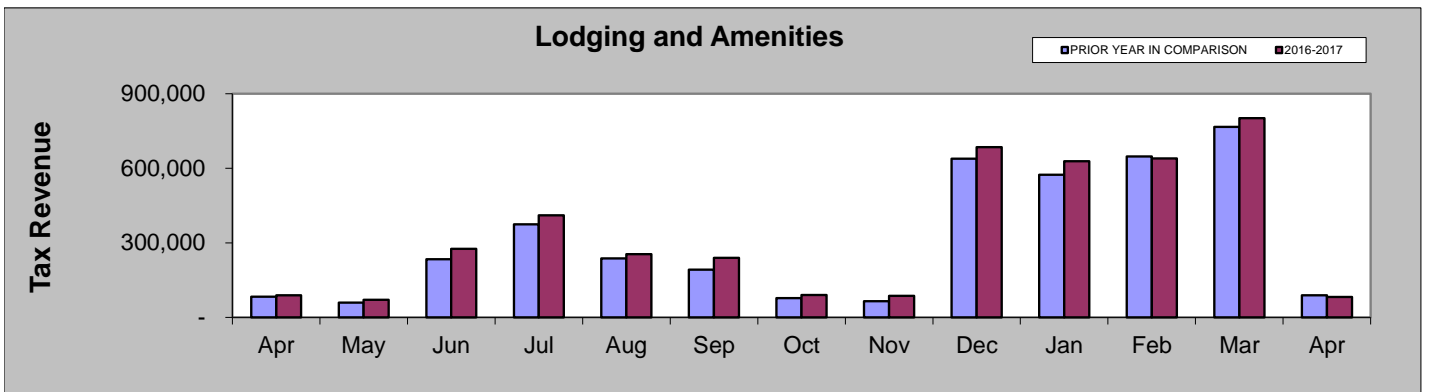
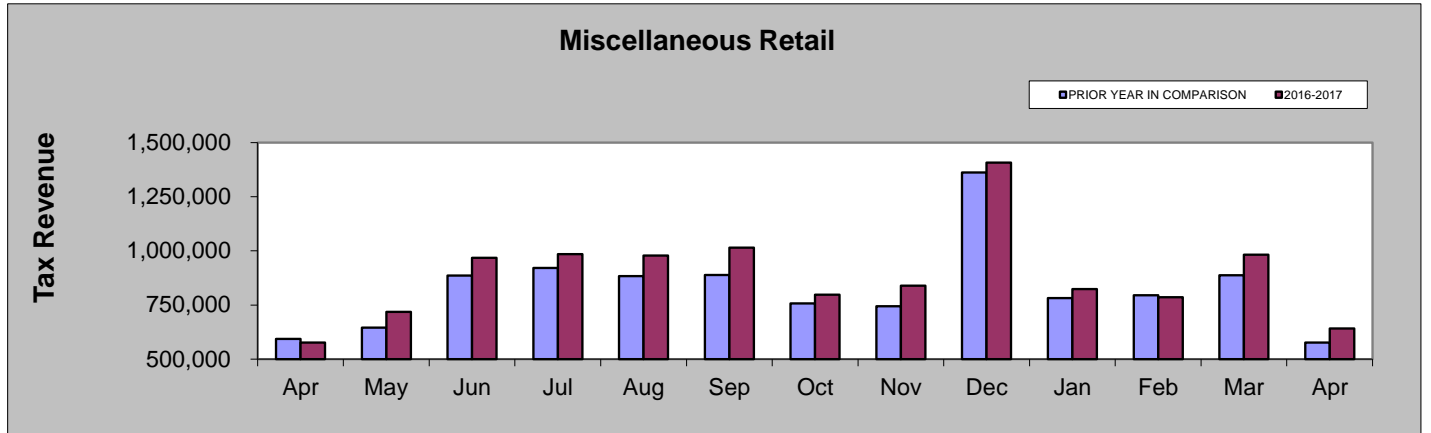
April 2016 - April 2017

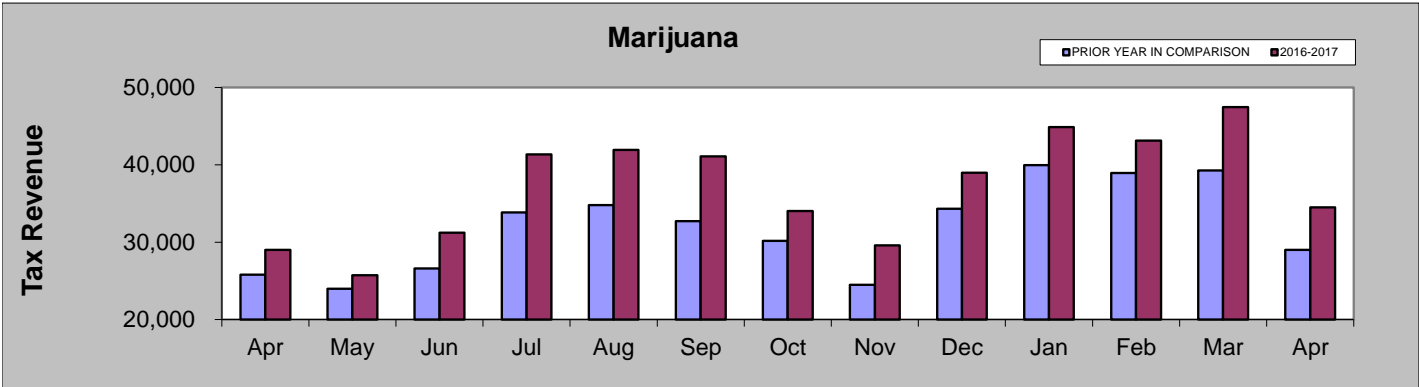
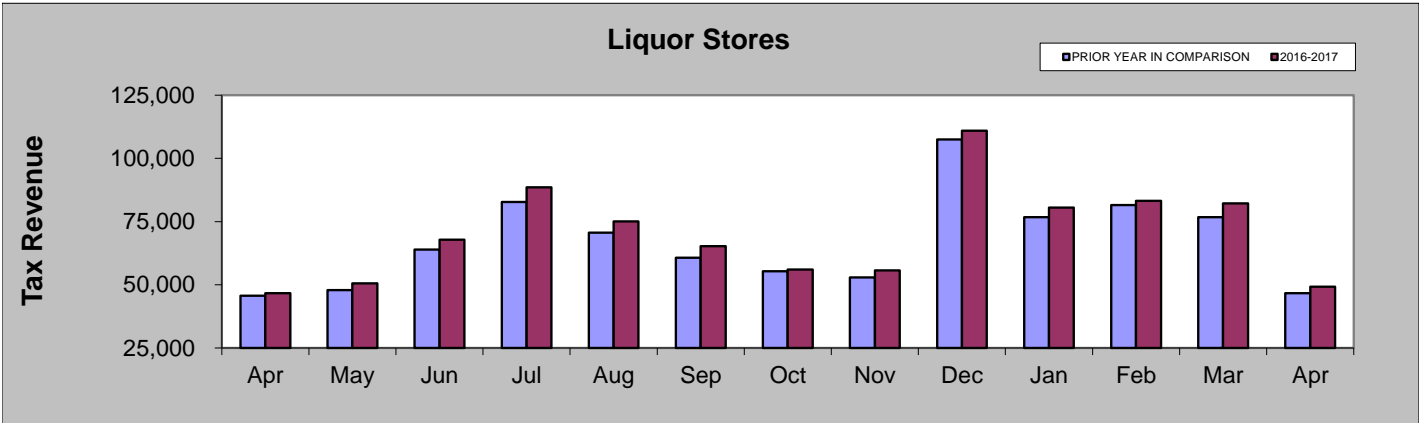
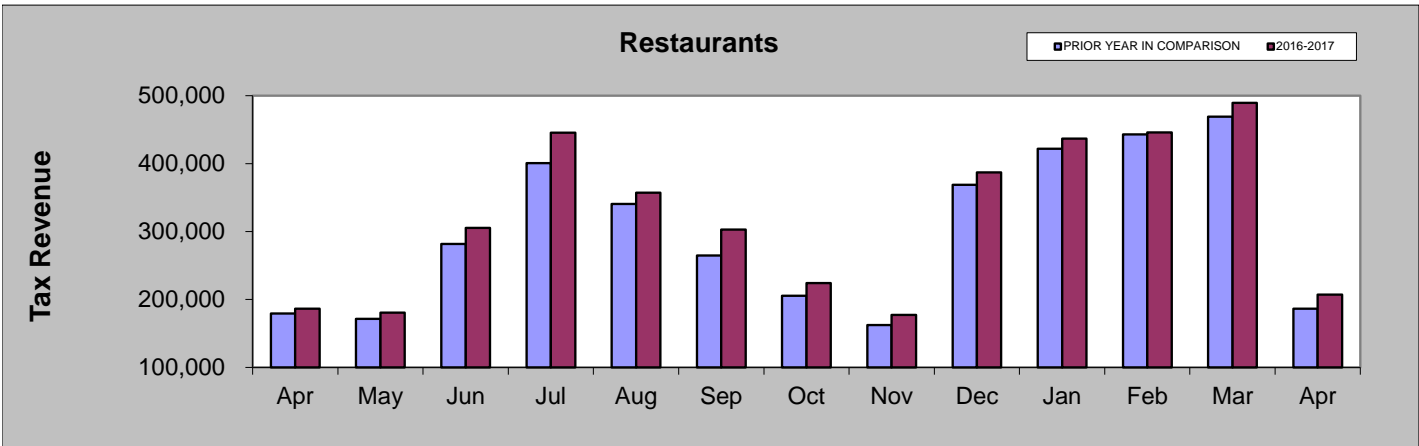
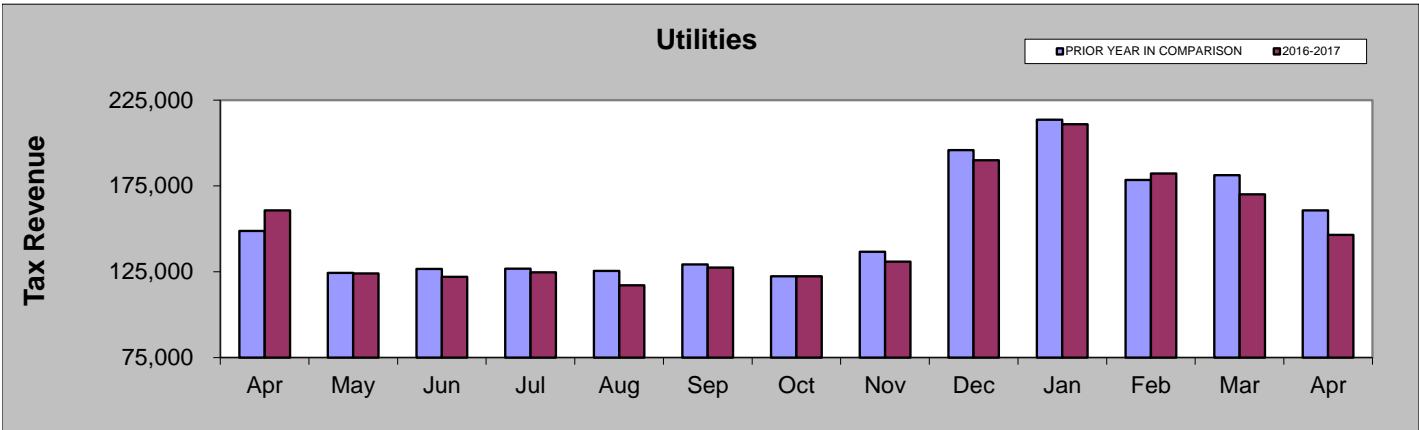


	Apr-16	May-16	Jun-16	Jul-16	Aug-16	Sep-16	Oct-16	Nov-16	Dec-16	Jan-17	Feb-17	Mar-17	Apr-17
Marijuana	28,993	25,725	31,236	41,330	41,945	41,094	34,015	29,593	38,972	44,878	43,110	47,454	34,510
Liquor Stores	46,722	50,518	67,857	88,604	75,025	65,278	56,043	55,694	110,973	80,551	83,172	82,179	49,185
Restaurants	186,378	180,452	305,358	445,376	357,261	302,787	223,958	177,501	386,864	436,605	445,785	489,514	207,067
Utilities	160,754	124,074	122,044	124,627	117,128	127,444	122,420	130,988	190,033	210,900	182,268	170,116	146,540
Sporting Goods	52,752	53,151	99,742	106,595	94,929	64,172	57,190	50,816	258,385	199,765	192,059	223,242	49,228
Lodging & Amenities	88,843	70,373	275,959	410,342	254,247	239,720	89,699	86,915	684,599	628,488	639,285	802,191	81,653
Miscellaneous Retail	576,003	717,926	967,772	985,477	978,104	1,015,180	797,533	839,805	1,407,493	823,914	785,610	982,379	641,784

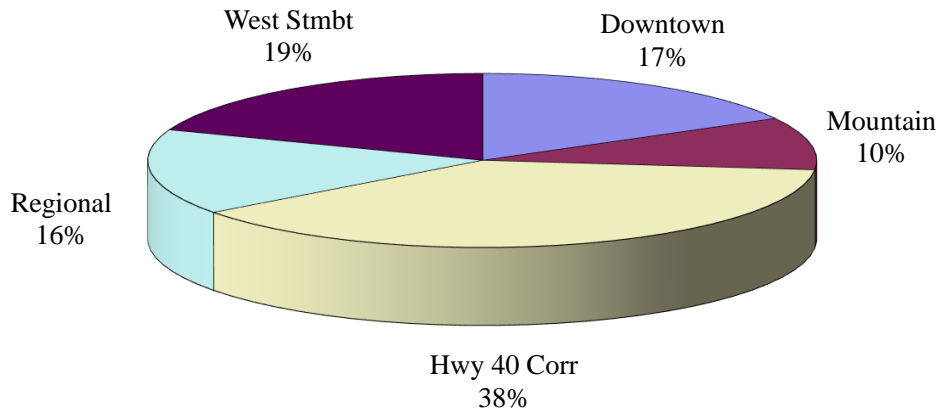
APRIL COMPARISON BY CATEGORY

	2017	2016	% change
Miscellaneous Retail	\$641,784	\$576,003	11.42%
Lodging and Amenities	\$81,653	\$88,843	-8.09%
Sporting Goods	\$49,228	\$52,752	-6.68%
Utilities	\$146,540	\$160,754	-8.84%
Restaurants	\$207,067	\$186,378	11.10%
Liquor Stores	\$49,185	\$46,722	5.27%
Marijuana	\$34,510	\$28,993	19.03%

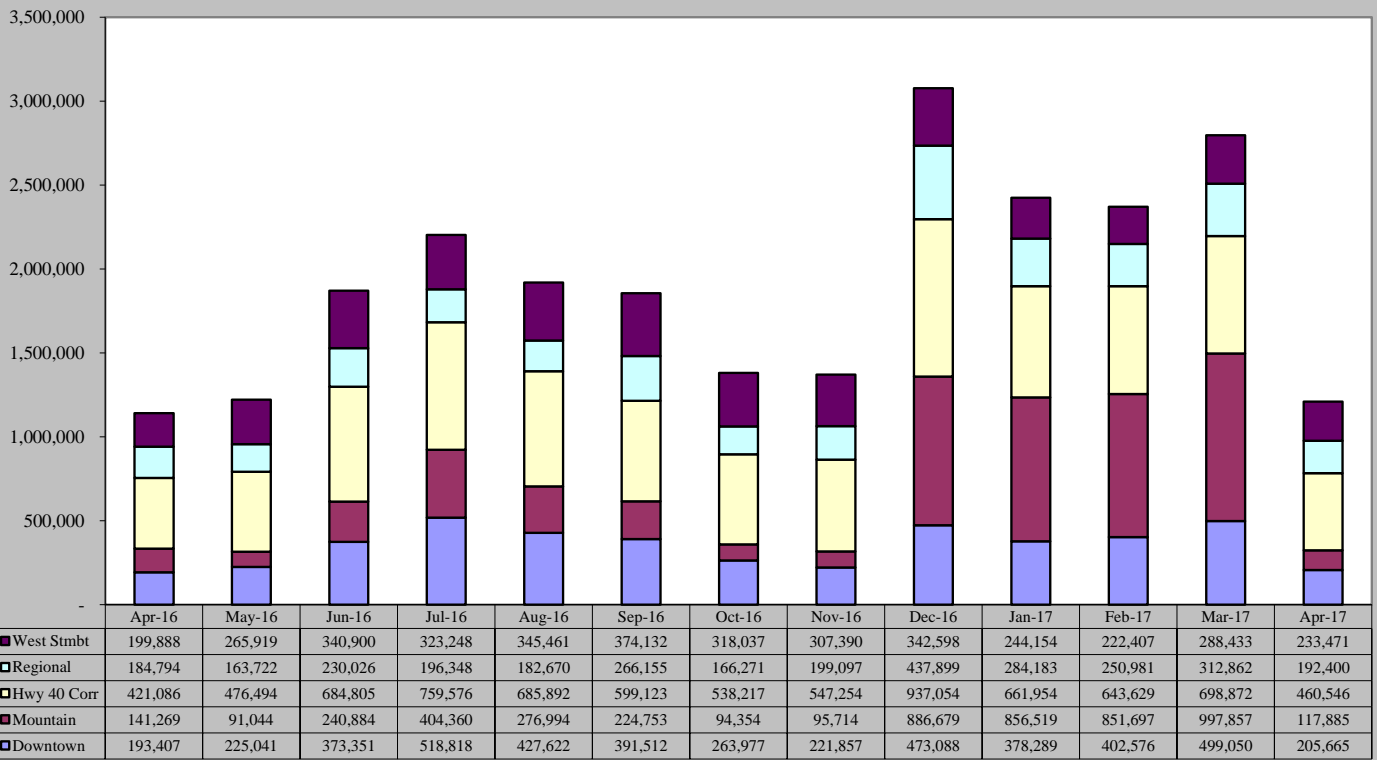




April 2017 Sales Tax By Area

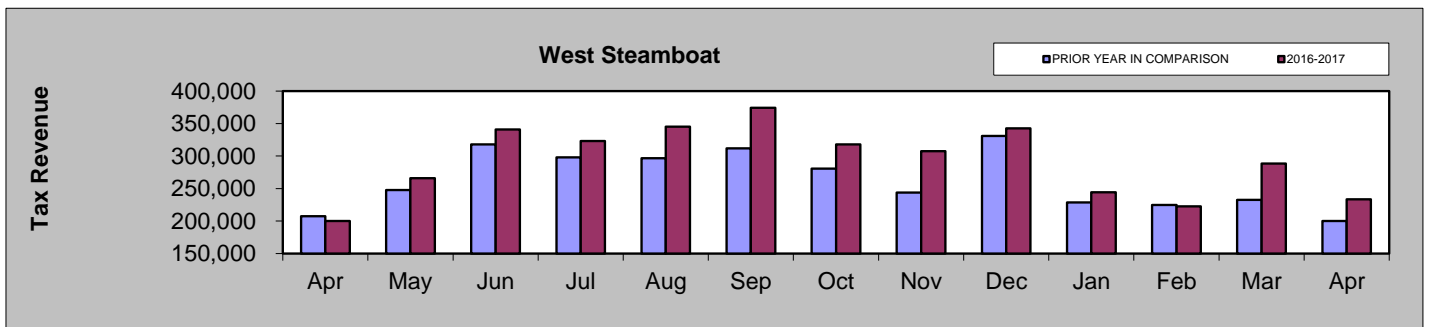
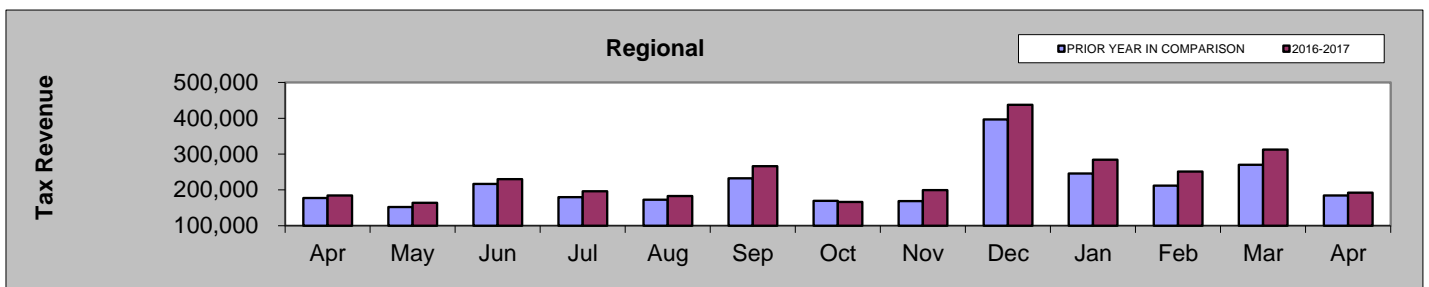
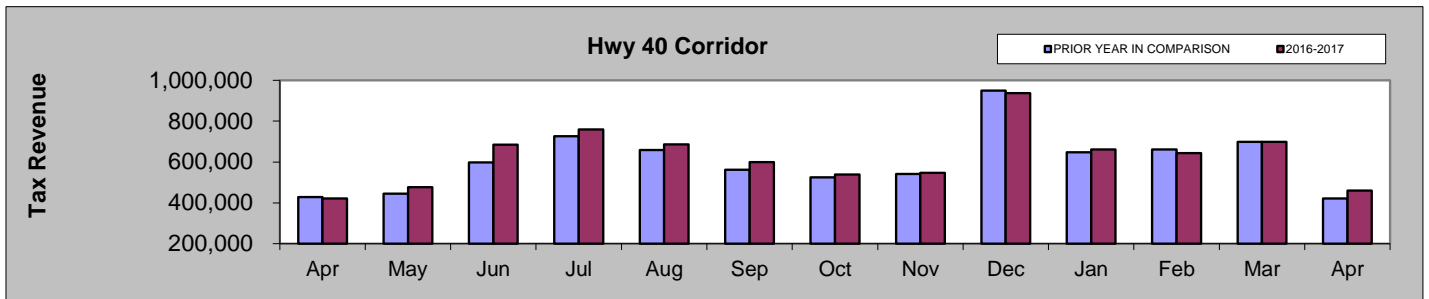
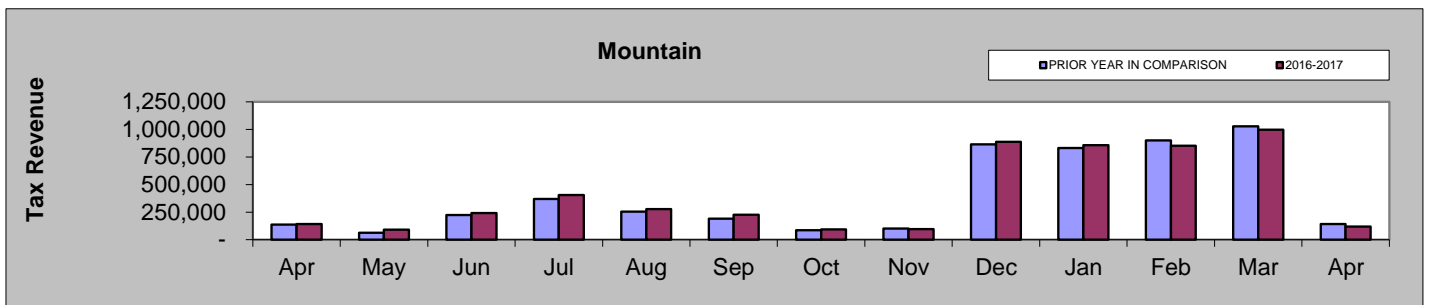
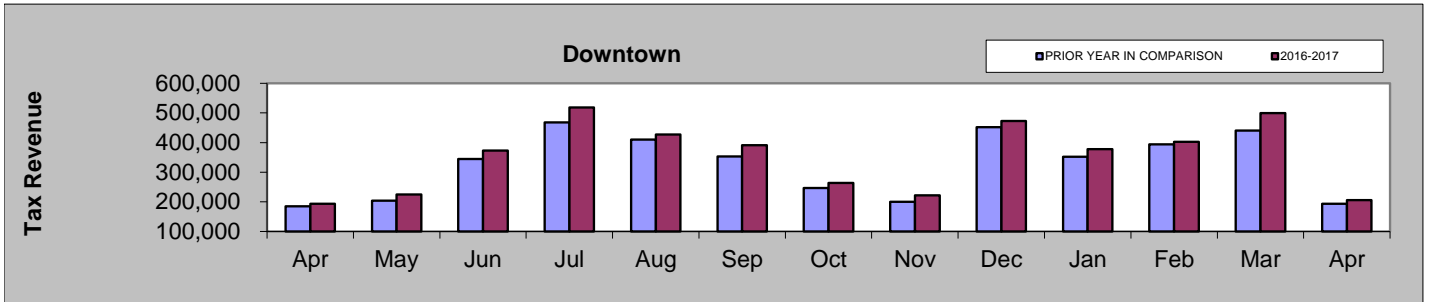


April 2016 - April 2017



APRIL COMPARISON BY AREA

Area	2017	2016	% change
Downtown	\$205,665	\$193,407	6.34%
Mountain	\$117,885	\$141,269	-16.55%
Hwy 40 Corridor	\$460,546	\$421,086	9.37%
Regional	\$192,400	\$184,794	4.12%
West Steamboat	\$233,471	\$199,888	16.80%



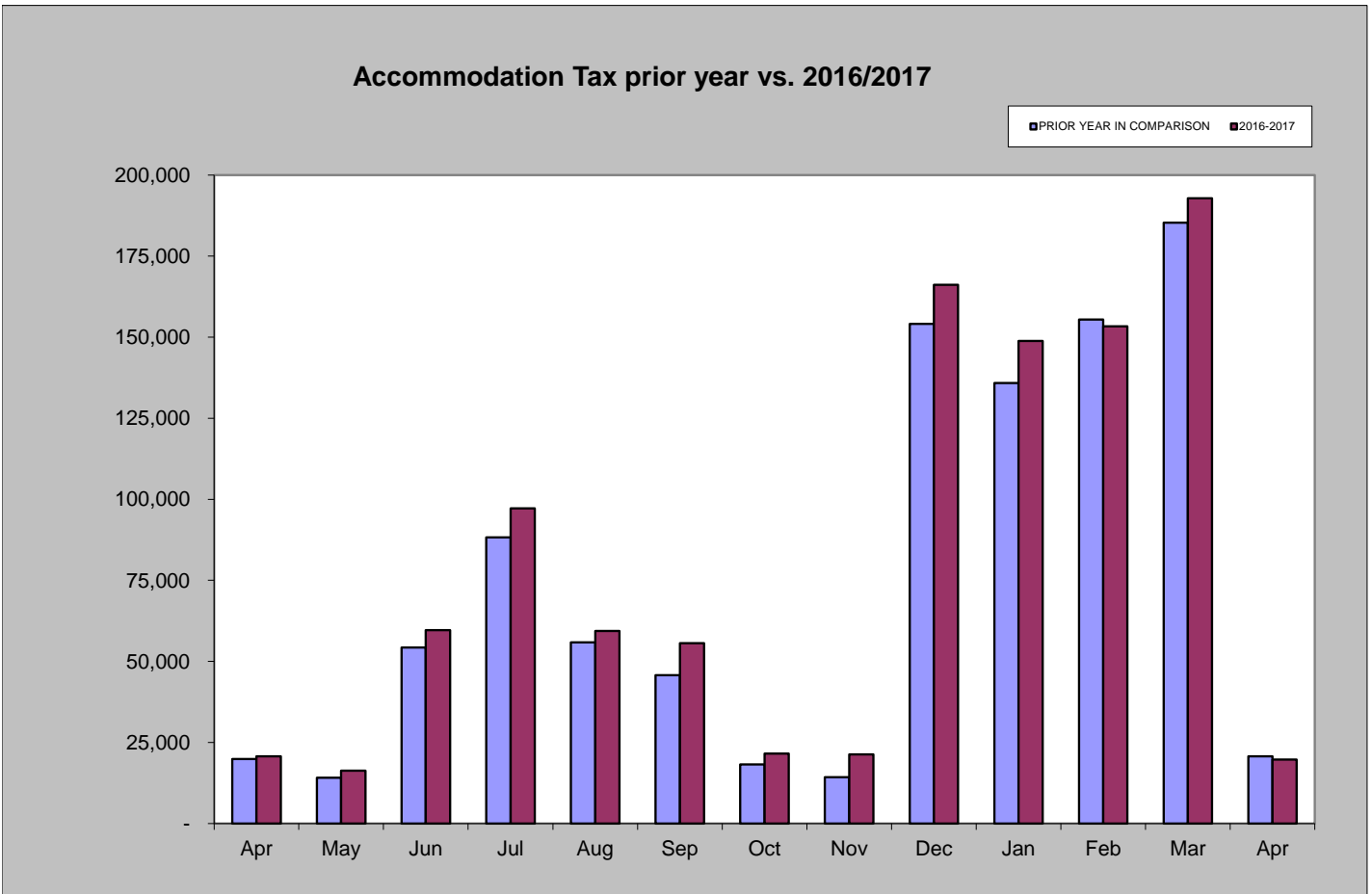
Accommodation Tax

April 2017 accommodation tax collections decreased by 4.79% compared to April 2016.

Year-to-date accommodation tax collections are 3.50% higher than those of 2016 year-to-date.

Accommodation Tax April 2017	Accommodation Tax April 2016	% increase/decrease over last April
\$19,715	\$20,706	-4.79%

Accommodation Tax 2017 YTD	Accommodation Tax 2016 YTD	% increase/decrease over prior Year to Date
\$514,752	\$497,351	3.50%



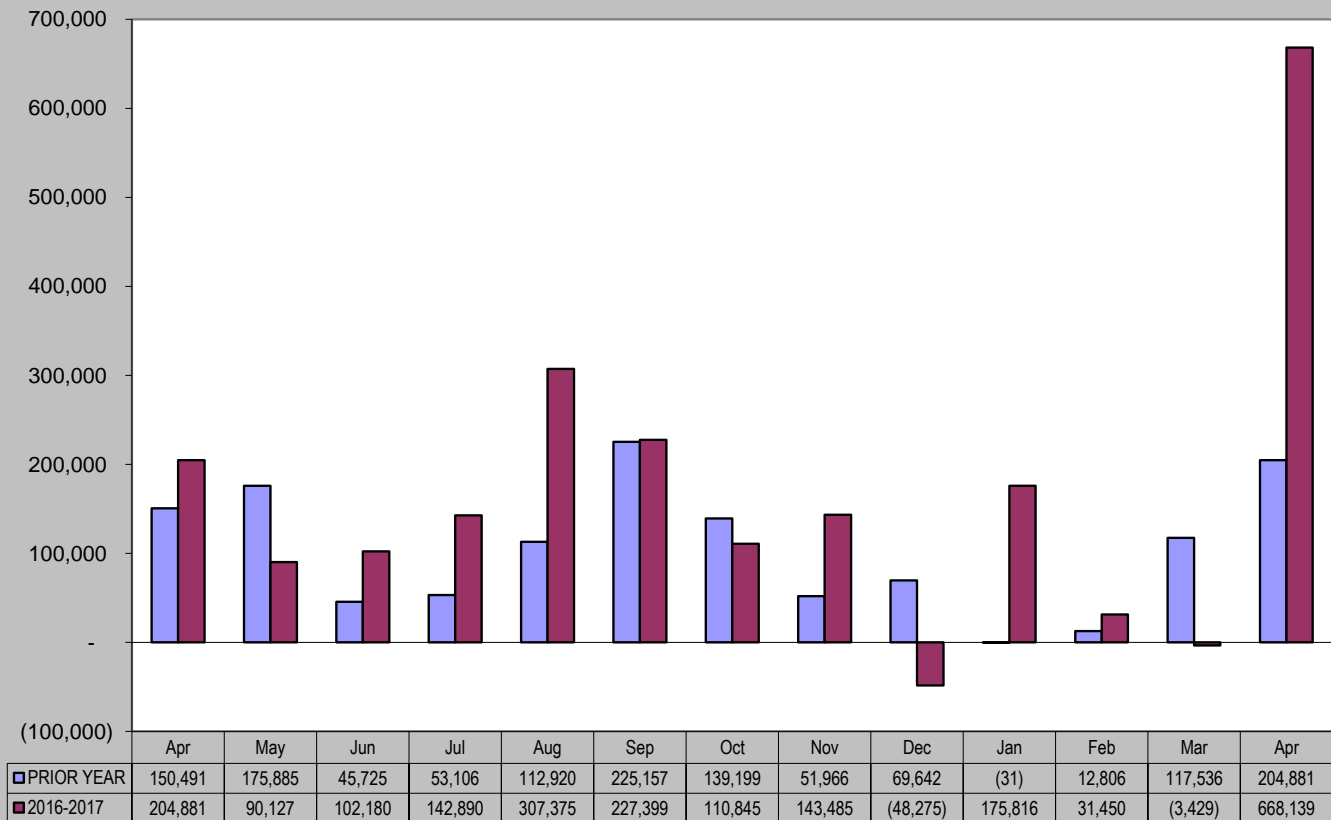
Building Use Tax

Year-to-date building use tax collections are 160% higher than those of 2016 year-to-date.

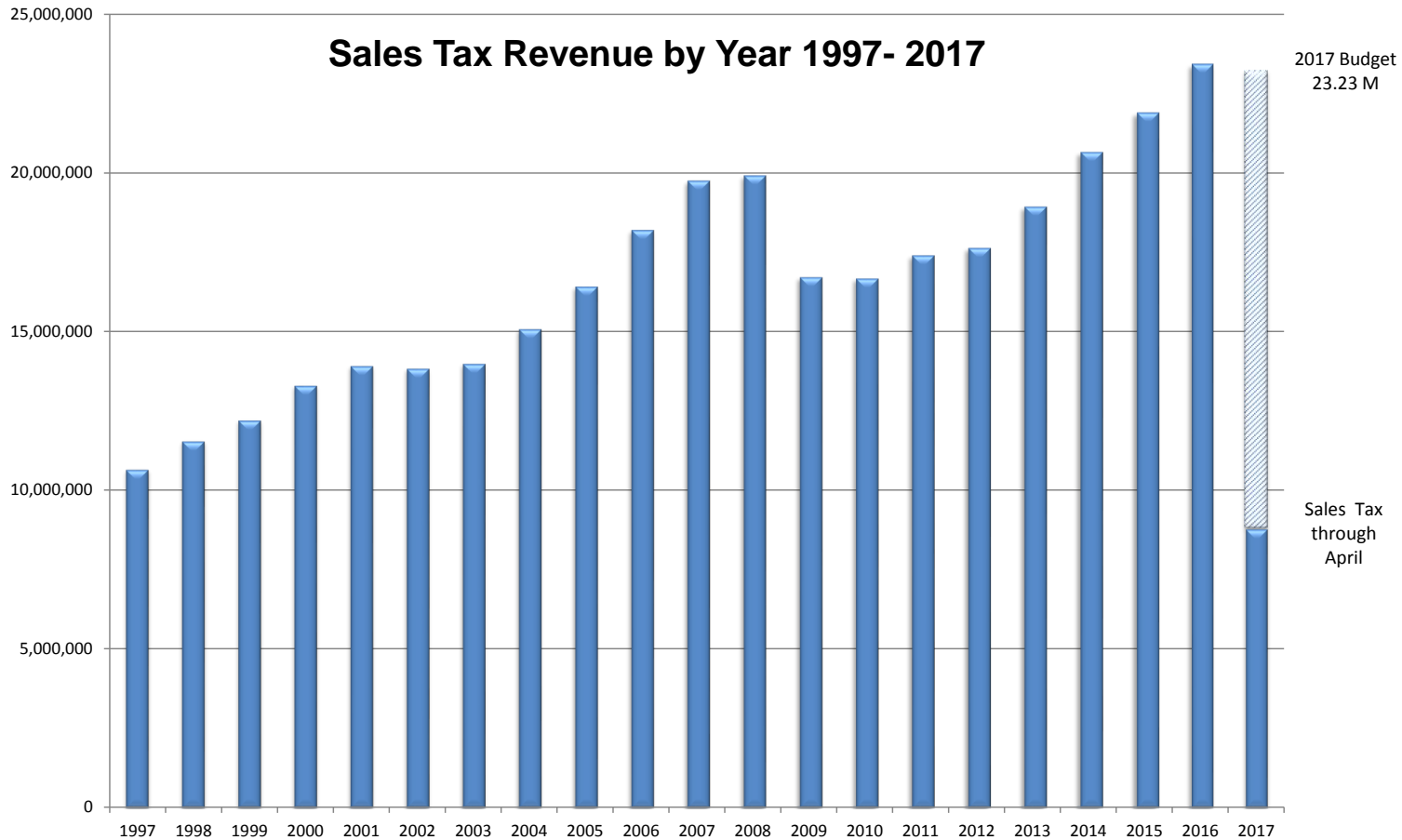
Building Use Tax April 2017	Building Use Tax April 2016	% increase/decrease over last April
\$668,139	\$204,881	226%

Building Use Tax 2017 YTD	Building Use Tax 2016 YTD	% increase/decrease over prior Year to Date
\$871,976	\$335,192	160%

Building Use Tax - prior year vs. 2016/2017



Sales Tax Revenue by Year 1997- 2017



Totals by Year	
1997	\$ 10,672,320
1998	\$ 11,559,068
1999	\$ 12,218,807
2000	\$ 13,304,983
2001	\$ 13,921,749
2002	\$ 13,841,283
2003	\$ 13,994,753
2004	\$ 15,079,016
2005	\$ 16,415,430
2006	\$ 18,192,298
2007	\$ 19,743,507
2008	\$ 19,904,293
2009	\$ 16,710,291
2010	\$ 16,669,735
2011	\$ 17,398,312
2012	\$ 17,632,019
2013	\$ 18,922,955
2014	\$ 20,635,678
2015	\$ 21,877,575
2016	\$ 23,408,365
* 2017	\$ 8,803,431

* 2017 total is year-to-date through April